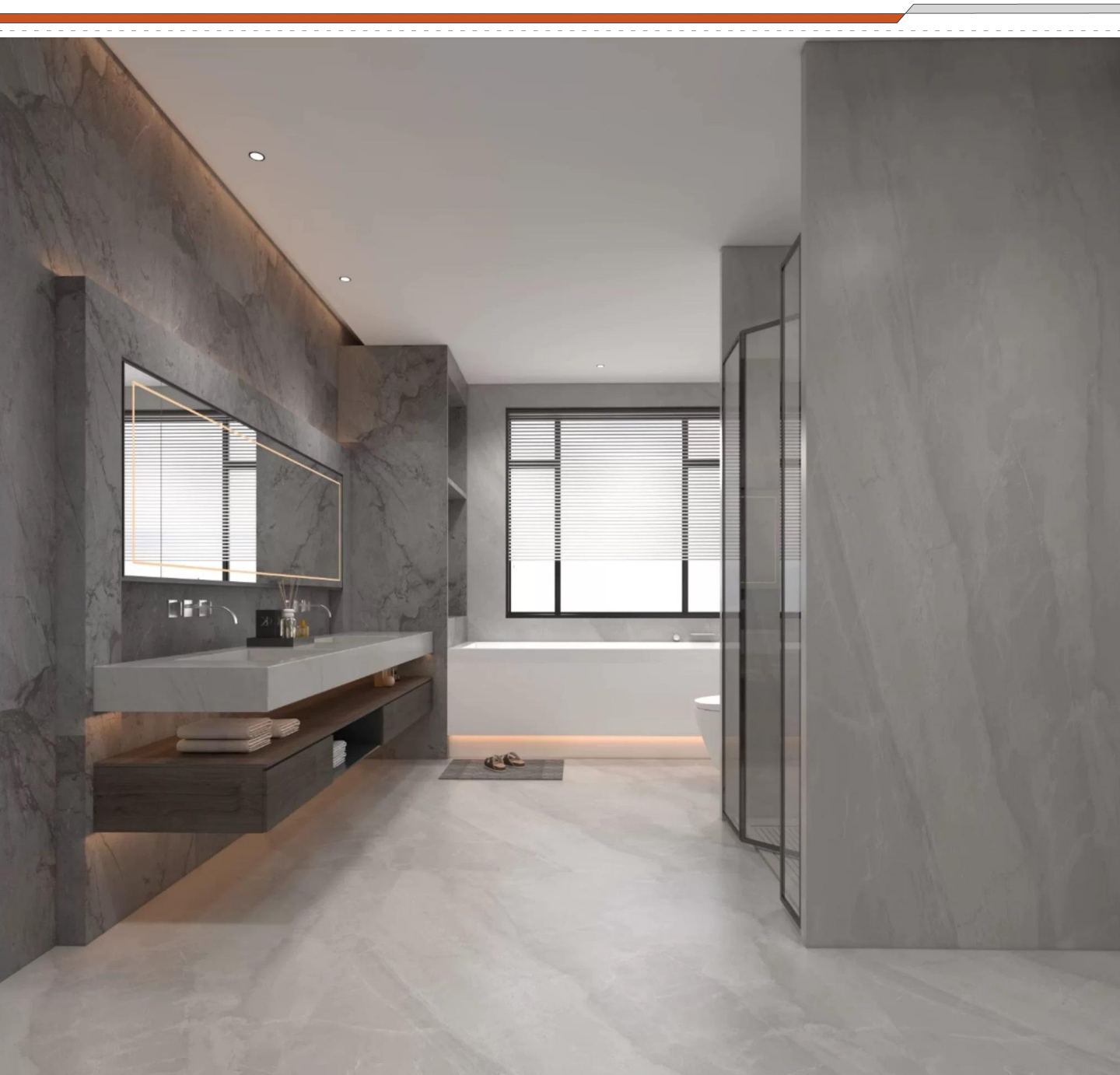


# Innovative installation systems for tile and stone



# StruX Systems Mission

Our mission is to deliver reliable, innovative, and easy-to-install building solutions that empower homeowners and professionals to create safer, stronger, and longer-lasting spaces.

We focus on solving real-world challenges such as bathroom waterproofing, tile crack prevention, and efficient installation of electric underfloor heating systems, while providing robust XPS boards, waterproof backer panels, and uncoupling membranes that enhance durability and simplify construction.

---

## Beyond Waterproofing

## Build the Invisible Shield for your Buildings

---

---



**01.**

Uncoupling Membranes



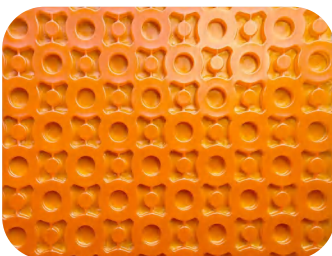
**02.**

Waterproof  
membrane system



**03.**

XPS Building Board



**04.**

Product display

# 01. Uncoupling Membranes



## 1. Uncoupling and anti-cracking

The compact uncoupling pad achieves stress separation between the tile and the base through its cavity design, allowing independent movement between the tile surface and the base, thereby preventing cracking and delamination of the tile.



## 2. Moisture Protection (steam management)

The design of the uncoupled pad provides additional access and space for potential steam beneath the floor, allowing it to form a steam cycle and effectively manage steam. How do we understand the formation of steam cycles? The formation of a steam cycle means that the design of the decoupled cushion film provides additional access and space for the steam under the potential floor, so that the steam is effectively circulated and discharged, avoiding the formation of a humid environment.



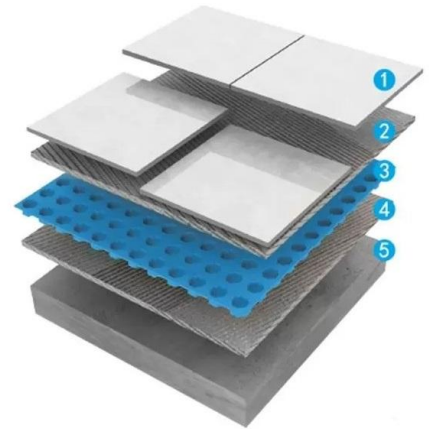
## 3. Waterproof

Uncoupled pads are made of polyethylene with strong water resistance to protect the base layer from steam penetration and mold growth especially for humidity-sensitive areas such as wet rooms.

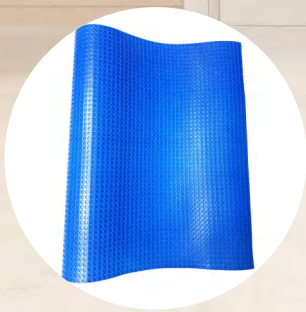


## 4. Average temperature

The air passage of the uncoupled pad allows the floor heating heat to be distributed more evenly.

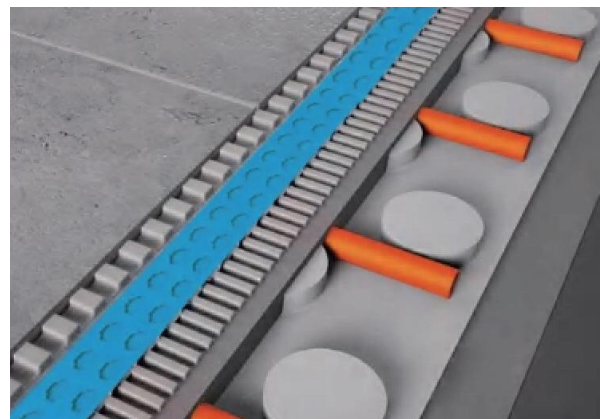
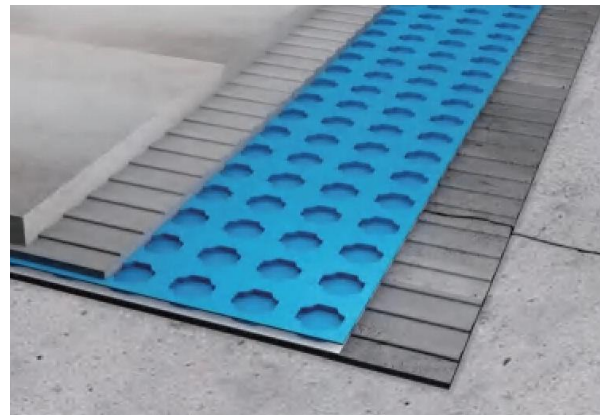
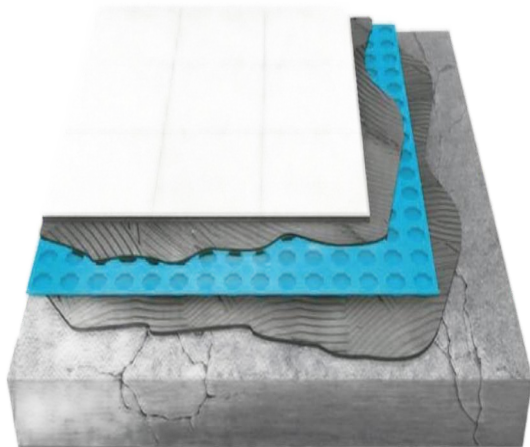
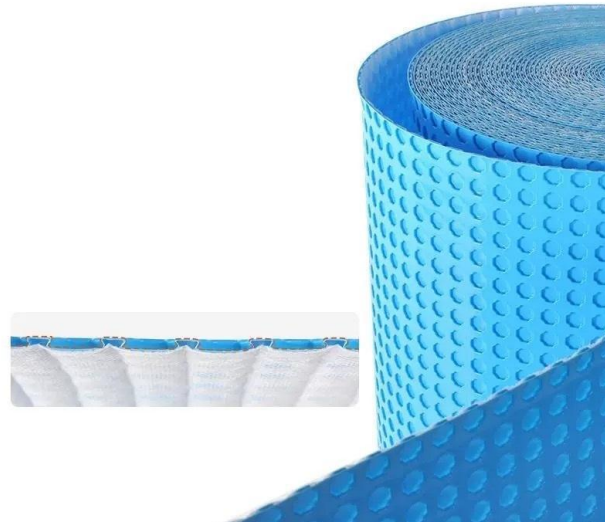


- 1、 TILE
- 2、 TILE ADHESIVE (≥6MM SQUARE-TOOTH SPATUAL)
- 3、 UNCOUPLING MEMBRANES
- 4、 TILE ADHESIVE
- 5、 BASEMENT LAYER



## Dovetail structure.

The surface holes are wider at the bottom and narrower at the top, so once the tile adhesive cures, it firmly anchors the mat to the tile.



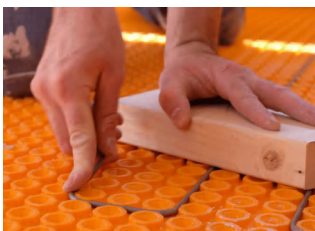
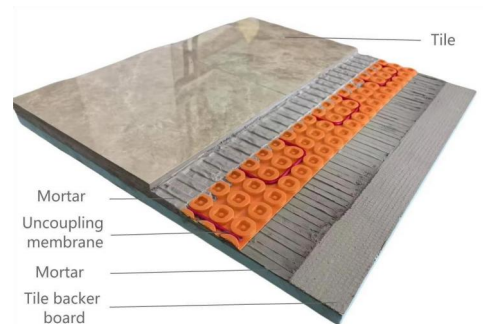
By simply using a uncoupling product, the tile system can be protected from the occurrence of cracks, ensuring the long-term durability of the tiles. Due to its flexible dovetail structure, the **StruX Systems** decoupling membrane is capable of adjusting and blocking the transfer of any underlying tension, providing a bridging effect for substrate shrinkage cracks. The decoupling membrane prevents cracks from developing into the tile layer, whether caused by mortar shrinkage during the curing process or by tensile stresses at the tile-mortar interface.

# Underfloor Heating Membrane



## Uncoupling Heating Cable Membrane

Dual-Layer Performance, Simplified Installation Elevate your flooring projects with the Uncoupling Heating Cable Membrane – a synergistic system pairing a premium uncoupling membrane with dedicated grooves for user-placed heating cables



# Product instruction:

Electric Underfloor Heating Mats are a unique, easy, and quick heating solution designed to be installed directly beneath tile, stone, slate, marble, and other floor coverings.

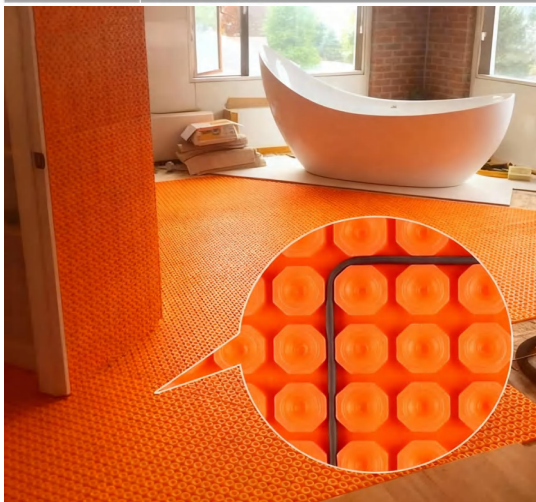
The S705-Heat floor heating mat is an uncoupling and waterproofing membrane designed to secure the heating cable in place.

S705-Heat provides uncoupling to neutralize shear stresses, allowing the use of a self-leveling compound while minimizing overall assembly thickness.

It protects the substrate and tile covering from cracked tiles and grout failure.

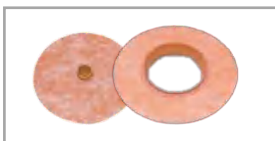
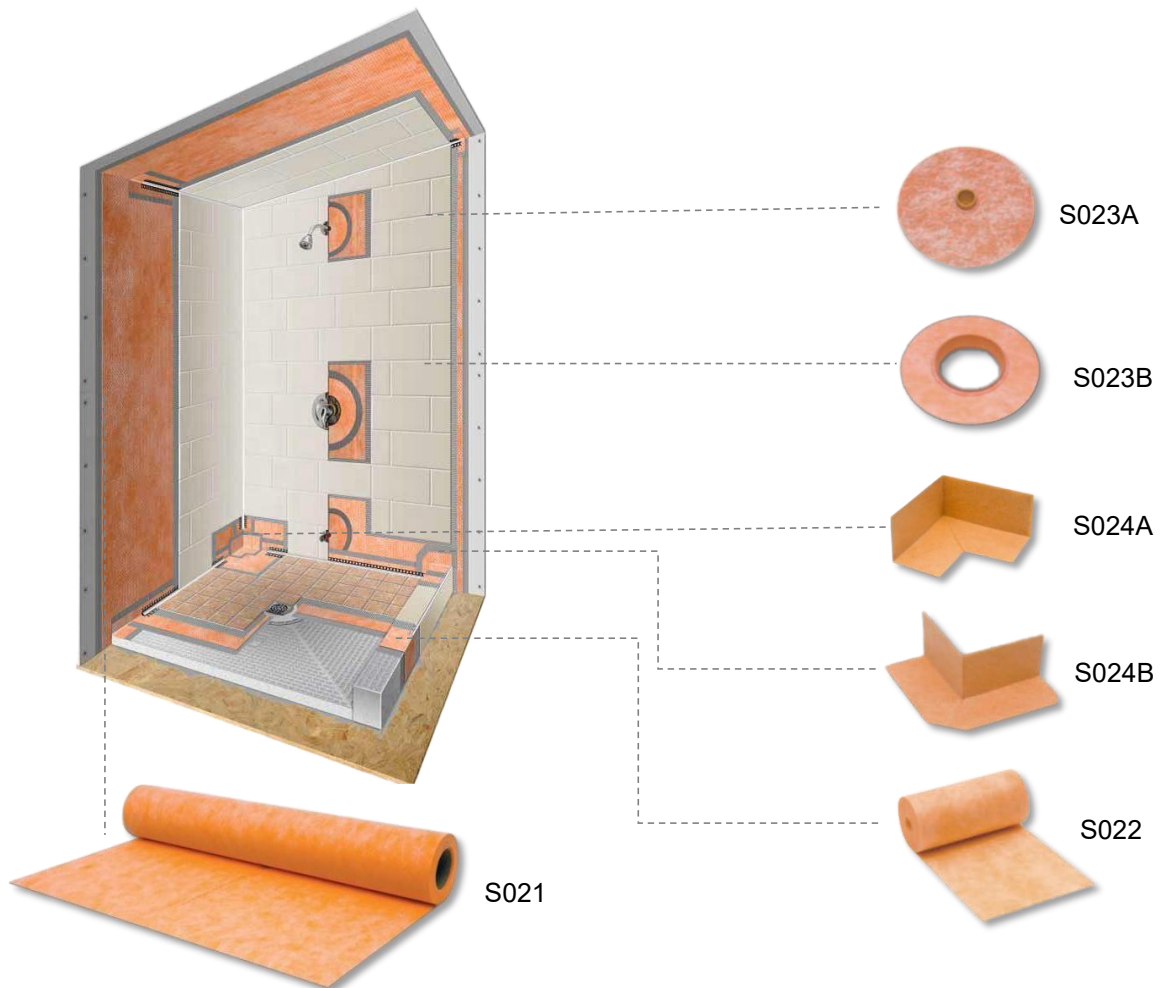
The patented stud structure of the S705-Heat membrane firmly holds the heating cable in place without the use of clips or fasteners, and it also eliminates the need for additional fixing materials during installation.

Product Description	Floor Heating membrane
Material	polyethylene(PE)film; polypropylene (PP) nonwoven (Material:HDPE membrane+pp textile)
Roll Size	1mx20m, 1mx10m, 1mx15m
Weight	1000g/sqm
Thickness	5.6mm
Film thick:	0.45mm
Wire cable diameter	4mm±0.2mm
Packing	wrapped in plastic film
Color	Red, Green, Orange, blue or others

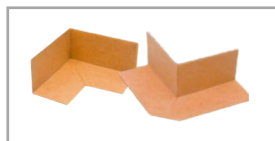


# 02. Waterproof Membrane system

Feature highlights: This PP PE compound shower wall and floor membrane liner offers excellent waterproofing for bathrooms, featuring high tensile strength, resistance to aging, corrosion, and root puncture. It is environmentally friendly, non-toxic, and suitable for wet substrate surfaces, shortening construction time.



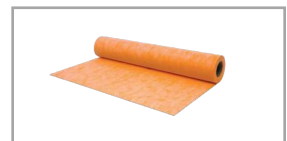
Pipe and mixing valve seals



Inside and outside corner seals



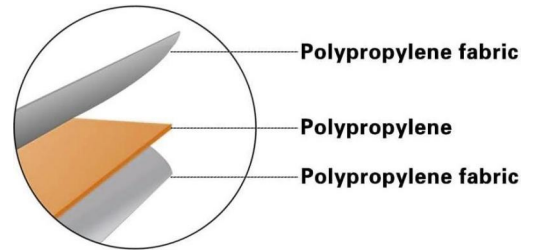
Waterproofing band



Waterproofing membrane

# Polymer PP/PE Waterproof Membrane

The polymer PP/PE waterproof membrane is made by multiple-ply different materials, especially its ageing and weathering resistance layer enables the membrane possess more longer effective age. It can bond with many kinds of adhesion, firm and secure. In case of cement-base, cementation agent can be used, the cementation agent can easily enter into the non-woven felt layer, forms a well-combination with cement after solidification, permanent durability.



## Suitable Substrates

- Concrete
- Concrete Masonry Brick Masonry
- Cement Mortar
- Bed Cement Plaster
- Gypsum Wallboard
- Exterior Glue Plywood (interior Only)
- Ceramic Tile and Stone
- Cement Terrazzo
- Cement Backer Board
- Poured Gypsum Underlayment



## Advantage

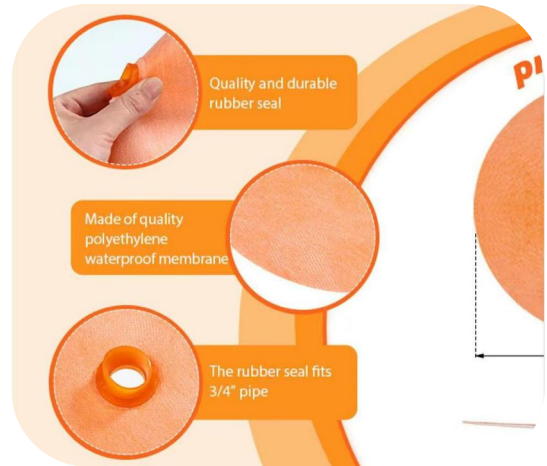
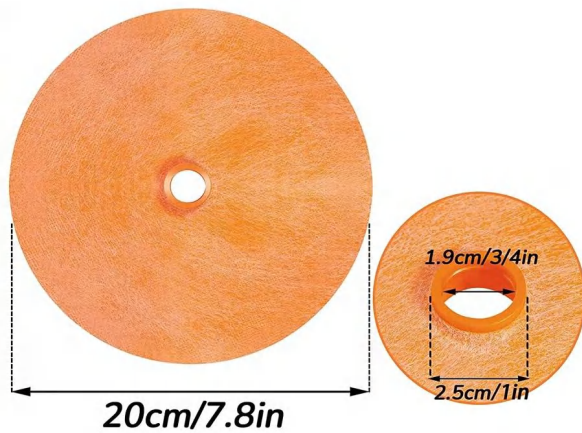
High-quality polyethylene PE material with high flexibility and tear resistance. Easy to cut and cut, the size and size of the waterproof membrane can be freely cut according to actual needs.

Highly waterproof and moisture-proof, high-quality flexible polyethylene board, each side is coated with non-woven, anti-corrosion and waterproof polyethylene fiber, 0.51 mm thickness and can effectively prevent water vapor from penetrating into the floor or wall. Widely used, can be used in conjunction with concrete, cement, gypsum, ceramic tiles and gypsum substrates, aerated concrete, terracotta bricks, wooden supports, etc. Important Parameters



# Product Description

## Pipe Seals



Waterproof sealing gasket for 3/4" shower valves and showerhead outlets, made with 4-mil PE membrane and rubber gasket.

**Durable Materials:** Made of premium polyethylene waterproof membrane with a high-quality rubber gasket for reliable waterproofing and corrosion protection.

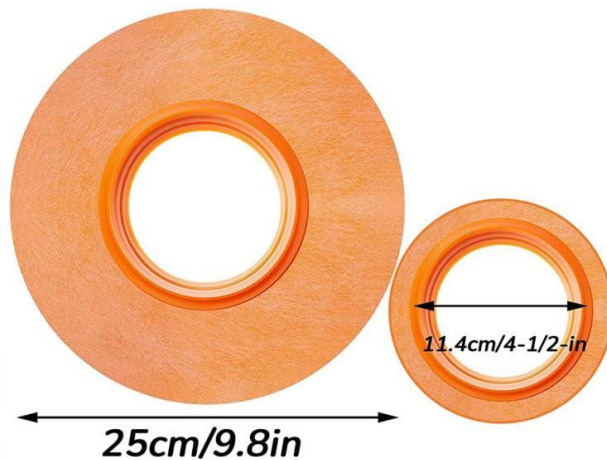
**Smart Design:** Prefabricated round shape fits shower valves and showerhead pipes seamlessly—no cutting required.

**Easy Installation:** Installs quickly with thin-set mortar and adds only a few millimeters to the wall thickness.

**Leak Protection:** Fits standard 3/4" pipes and helps maintain a tight, leak-free seal around openings in cement boards and tiles.

**Wide Application:** Ideal for sealing shower valves and showerhead outlets in household bathrooms.

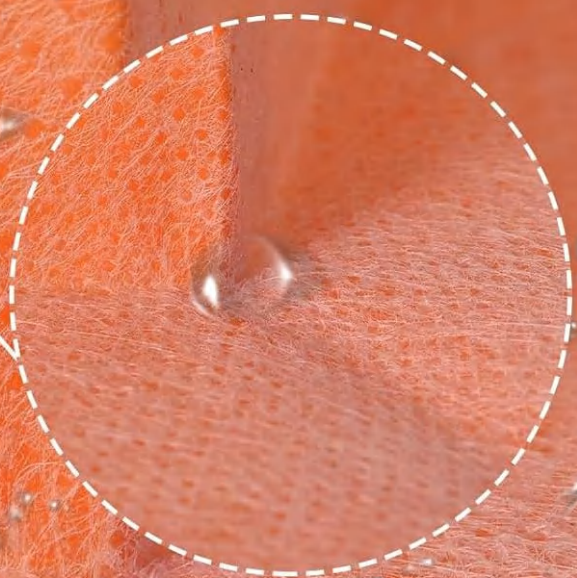
## Mixing Valve Seal



## Product Features

# Waterproof

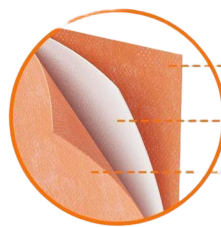
Effectively prevent water from penetrating a corner.



**Steam-Resistant:** Extremely low water vapor permeability makes it ideal for showers, bathtubs, and steam-room installations.

**Flexible Fit:** Pre-formed to fit corners seamlessly—no cutting of standard membrane rolls needed for tight or complex areas.

# Inside/Outside Corners



Durable Polyester Material

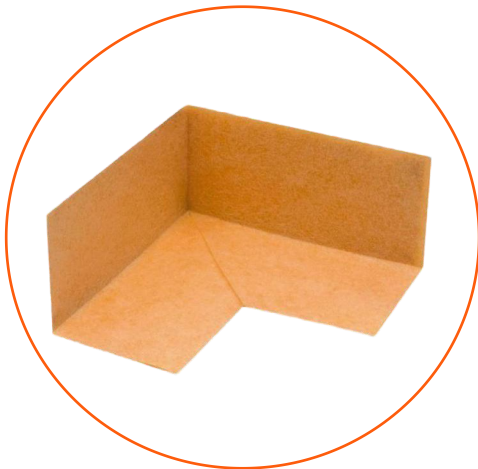
polypropylene fabric

polyethylene

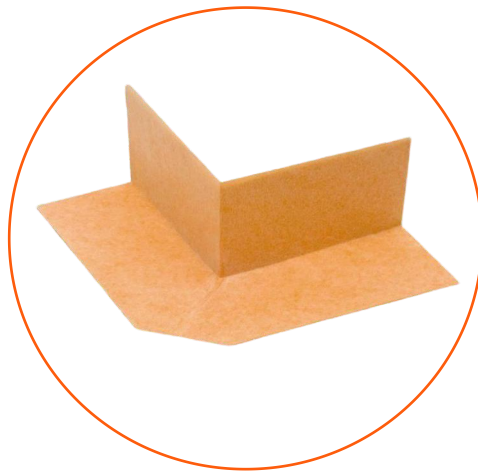
polypropylene fabric



GS Inside/Outside Corners are flexible waterproofing membrane bands designed for sealing corners around bathtubs and shower installations. Both sides are covered with anchoring fleece, allowing secure installation with thin-set mortar.



**Inside Corners**



**Outside Corners**

Waterproof membrane for inside-/outside corner

Preformed sealing corners will allow easily sealing of corners.

# 03. XPS Building Board



## About Multifunctional Backing Board

Strux Multifunctional Backing Board is a substrate panel that boasts multiple advantages such as waterproofing and mold resistance. It features an extruded polystyrene foam board as its core material, overlaid with a high-strength alkali-resistant fiber mesh and a specially formulated polymer mortar coating. The core material, with its closed-cell honeycomb structure, is characterized by its impermeability to water and air. The high-strength alkali-resistant fiber mesh enhances the panel's strength and flexibility. The surface polymer mortar coating is fully compatible with any modified polymer mortar, tile adhesive, or other finishing undercoats.

### Polymer mortar

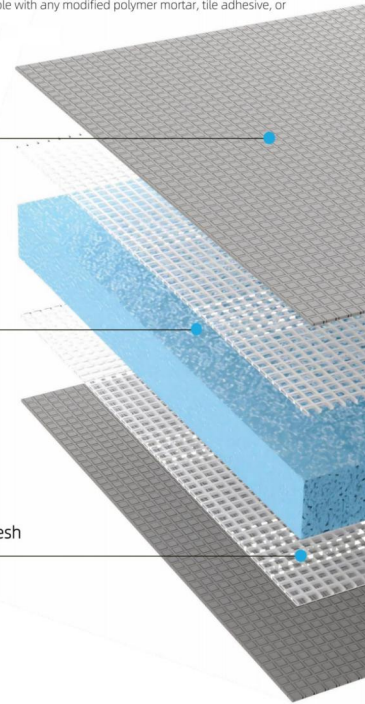
High strength and high adhesion, capable of bonding with mortar adhesives, glue, etc., suitable for the construction of common surface layer materials such as tiles, stone slabs, stone, putty, and micro cement.

### Extruded polystyrene foam board

Extruded polystyrene foam board is produced by closed-cell foaming of polystyrene plastic granules, maximizing the core material's waterproofing capabilities; the internal cell closure rate exceeds 99%. It is characterized by its lightweight, high thermal resistance, low expansion ratio, and low water vapor permeability.

### High-strength alkali-resistant fiber mesh

It possesses superior alkali resistance and high tensile strength, particularly exhibiting exceptional corrosion resistance in cement and other strong alkaline environments.



## Technical Parameters, Dimensions and Specifications

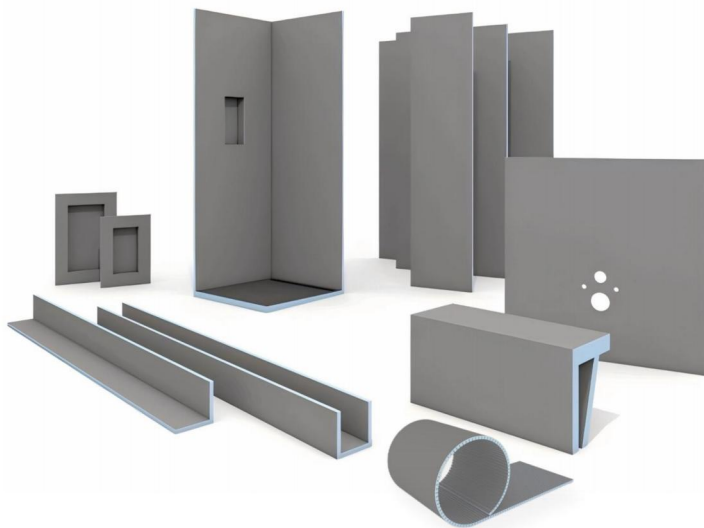
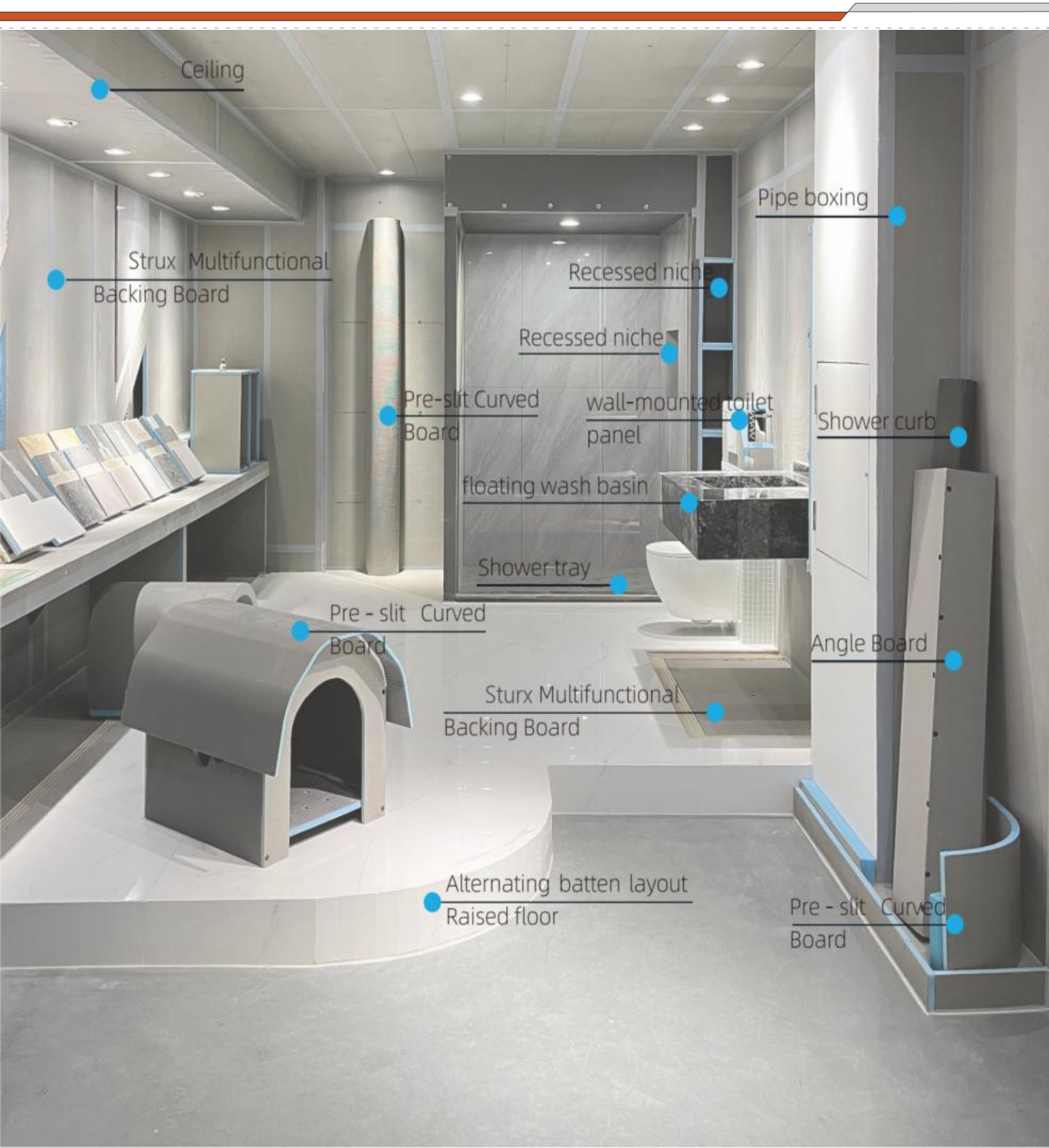


Plate Technical Data		
Xps foam Density	DIN 53420	32 kg/m <sup>3</sup>
Thermal Conductivity	EN 13164	0.034 W/m.K
Compressive Strength (10%deflection)	EN 826	400 kPa (40 tonnes/m <sup>2</sup> )
Water Absorption (2-day immersion)	ISO2896	0.2%by volume
Water Absorption(Capillary)	DIN 53428	Zero
Water Vapour Diffusion Resistivity(μ)	DIN 52615	110-225μ
Maximum Tile Loading Weight	CERAM121107	62kg/m <sup>2</sup>
Flammability	EN 13501	Class E
Impact Sound Reduction	BS-ISO10140	dLw=21
Operating Temperature Range	/	-58°F to +175°F

Plate size specifications			
Thickness (mm)	600mm×1200mm	600mm×2500mm	900mm×2500mm
4.0	√		
6.0	√		
10.0	√	√	
12.0	√	√	
20.0	√	√	√
30.0	√	√	√
40.0	√	√	√
50.0	√	√	√

Other sizes and specifications can be customized

# Product Features



Ceiling

Strux Multifunctional Backing Board

Pre-slit Curved Board

Recessed niche

Recessed niche

wall-mounted toilet panel

floating wash basin

Shower tray

Pipe boxing

Shower curb

Pre - slit Curved Board

Angle Board

Sturx Multifunctional Backing Board

Alternating batten layout Raised floor

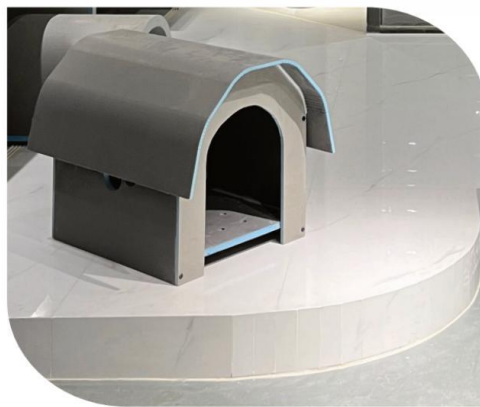
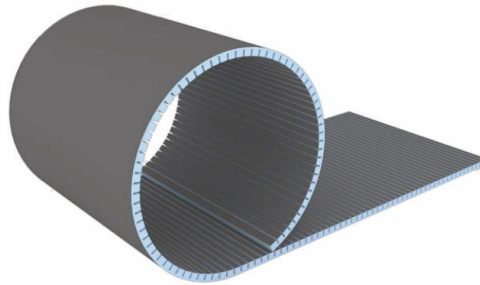
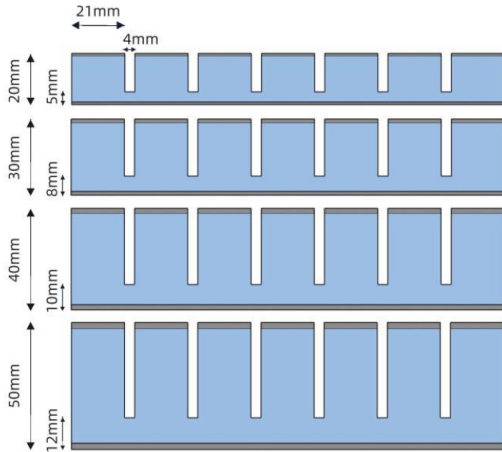
Pre - slit Curved Board

# Product Features

## Pre-slit Curved Board

— Multiple bends and curved surface designs can be freely transformed

- It brings more possibilities to the spatial design of various arcs and curved surfaces.
- Waterproof, moisture-proof, and mold-resistant, it boasts excellent stability, strength, and durability, addressing the quality and longevity issues associated with complex shapes in conventional panels.
- The material is lightweight, easy to install, saving both time and labor.
- As a base material, it is not only moisture-proof and waterproof but also forms a strong bond with various adhesives, effectively preventing the surface layer from cracking or peeling after exposure to water or moisture.



### Plate size specifications

Pre-slit Curved Board widthwise / Pre-slit Curved Board lengthwise	
Thickness × Width × Length (mm)	Weight (kg/m <sup>2</sup> )
20×600×1250/2500	3.65
30×600×1250/2500	4.45
40×600×1250/2500	4.86
50×600×1250/2500	5.26

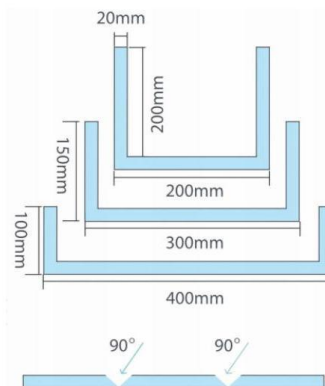
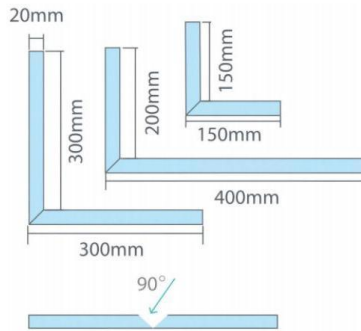
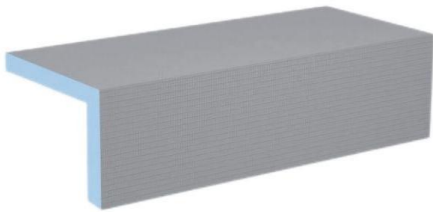
Other sizes and specifications can be customized

# Product Features

## L/U Shaped Angle Board

— Quickly cover wet areas or drainage pipes

The corner panel structure is stable, compact in size, integral in form, and high in verticality, with excellent surface adhesion. The material itself is waterproof, durable, and has good sound insulation properties, perfectly addressing the challenges of space and sound insulation in traditional pipeline wrapping techniques. Installation is straightforward, and pipeline maintenance and removal are more convenient.



### Plate size specifications

L-shaped angle board	U-shaped angle board
Thickness × Width × Length (mm)	Thickness × Width × Length (mm)
20×2500×150+150	20×2500×150+300+150
20×2500×200+400	20×2500×200+200+200
20×2500×300+300	20×2500×100+400+100
30×2500×200+400	30×2500×150+300+150
30×2500×300+300	30×2500×200+200+200
/	30×2500×100+400+100

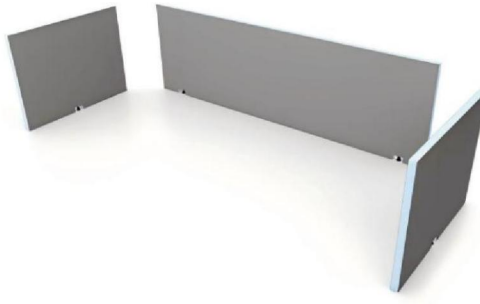
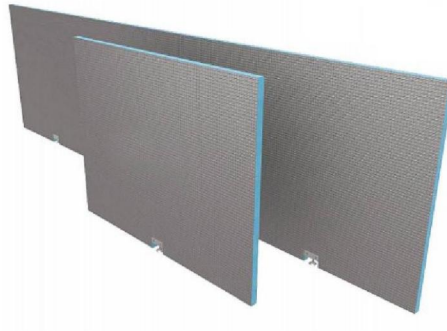
Other sizes and specifications can be customized

## Product Features

### bathtub rim panel

— Easier installation for drop-in bathtubs

- Simple craftsmanship, easy installation.
- Waterproof and mold-resistant, durable for long-term use.
- Lightweight panels, easy to transport.
- Excellent compatibility, strong adhesion.
- Easy access for inspection and maintenance.



The prefabricated Bathboard bath cladding with a thickness of 30 mm can be used for almost every bath format. Thanks to the height-adjustable feet, height variations of up to 25 mm can be compensated for using adjustable feet during installation.

#### Plate size specifications

name	Quantity × Height × Width × Thickness
Bathtub end panel	2×600mm×800mm×30mm
Bathtub Side Panel	1×600mm×2100mm×30mm
Leveling Feet	√

Other sizes and specifications can be customized

# Product Features

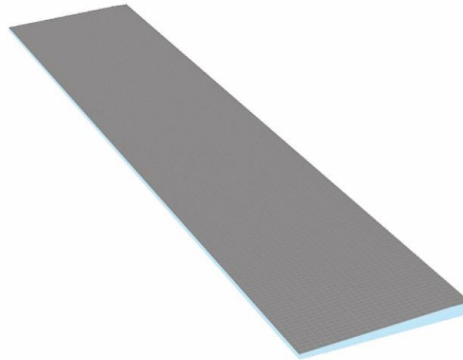
## Wedge plate

— Sloped floor for one-way drainage

## Shower Curb

— One-piece design enables fast and hassle-free installation

Wedge plate The wedge-shaped plate tapers from 40mm on one side to 10mm on the other, making it an ideal choice for floors requiring one-way drainage. With its built-in slope, it can be easily extended across an entire room by cutting and placing it alongside 20mm or 30mm thick backing boards. Fully waterproof and compliant with freeze-thaw cycle testing, it is also suitable for outdoor applications.



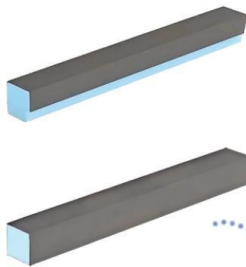
### Key Features

- Wedge-shaped panels serve as on-site expandable components for showers, effectively extending the shower area.

### Plate size specifications

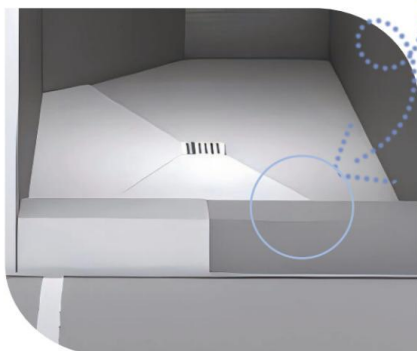
Thickness × Width × Length (mm)
30×1200×1200
40×1200×1200
40×600×1200

Other sizes and specifications can be customized



### Main Features of Shower Curb:

- Water Containment - Prevents water spillage to keep the bathroom floor dry.
- Structural Support - Provides a stable base for shower doors or glass panels.
- Wet/Dry Zone Separation - Clearly defines the shower area with a raised boundary.
- Waterproofing Integration - Works seamlessly with waterproof membranes to prevent leaks.

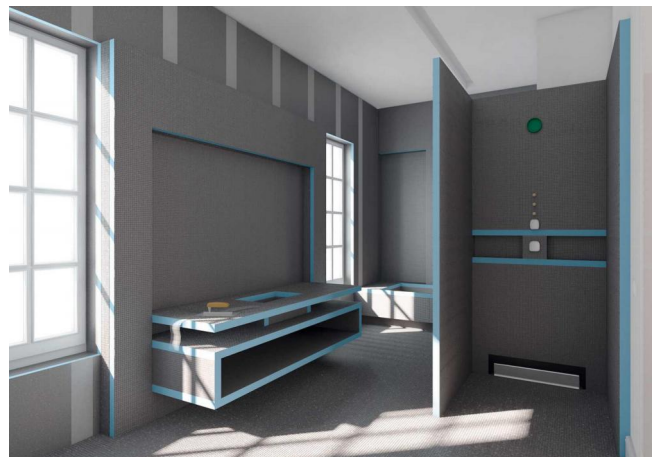


### Plate size specifications

Thickness × Width × Length (mm)
60×50×1200
89×50×1200
114×127×1600

Other sizes and specifications can be customized

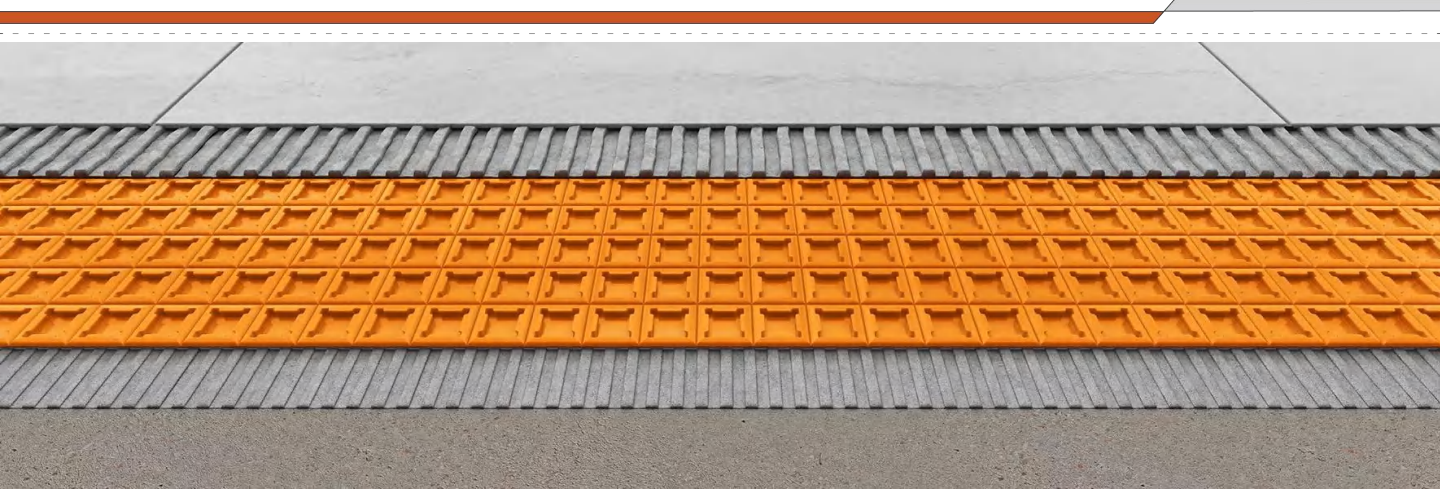
# Product Features

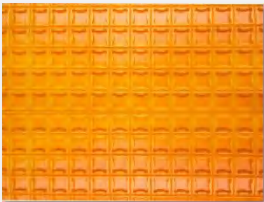
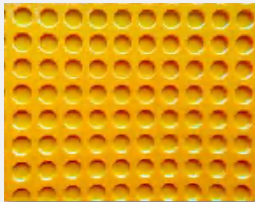
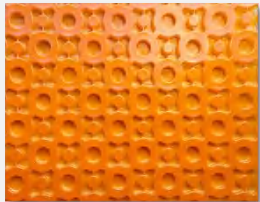
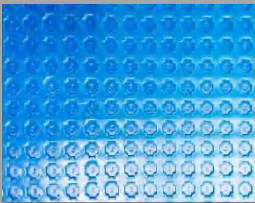
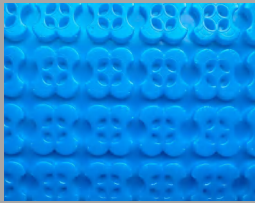

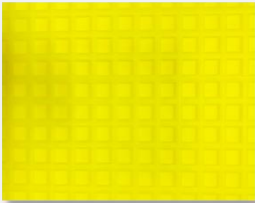
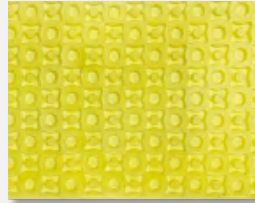
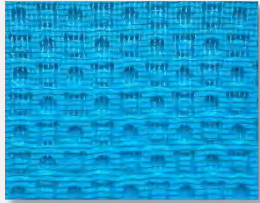


# 04. Product display

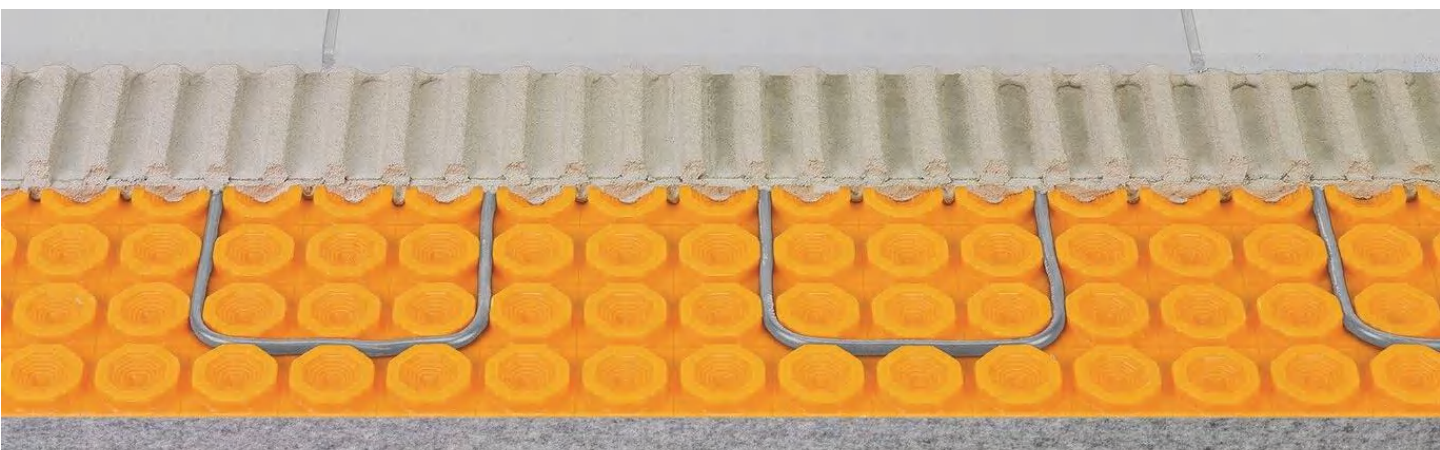



# Uncoupling Membrane



Uncoupling Membrane			
	S510	S511	S512
Uncoupling Membrane			
	S513	S514	S515
Uncoupling Membrane			
	S516	S517	S518

# Heating Cable Uncoupling Membrane



Heating Cable				
	S705	S706	S707	S708
Self-adhesive				
	S709	on the backside	S710	on the backside
Electric Warm				
	S711	S712	S713	S714

# Waterproof membrane system



Waterproof Membrane				
	S021	S022	S023	S024
Waterproof Membrane				
	S031	S033	S034	S035
Waterproof Membrane				
	S041	S043	S045	S046
Waterproof Membrane				
	S051	S052	S053	S055

# XP Series



<p>XP Series</p>				
	<p><b>X201</b></p>	<p><b>X202</b></p>	<p><b>X203</b></p>	<p><b>X204</b></p>
	<p><b>Underfloor Heating Board</b> Grooved XPS with aluminum foil for efficient heat Only 20/25/30 mm thick, pre-cut pipe grooves. Supports chipboard or engineered wood flooring. Ready for carpets, tiles, or wood</p>	<p><b>XPS underheating floor board</b> Composition polystyrene. Size: 120x60cm, 250x60cm, 3'x5', 4'x8', or customized. Thickness: 4/6/10/12/20/30/50mm, 1/8", 1/4", 1/2", 5/8", 1", 2" or customized.</p>	<p><b>Shower Niches</b> It is made of high-density extruded polystyrene foam insulation. Boards(XPS) being coated on both sides with fiberglass mesh embedded into a layer of polymer cement. It is pre-cut with grooves, and seal to be shower niche with silicon. Size: 12"x12"x12", 12"x12"x12"x12", 12"x8"x16" or customizable.</p>	<p><b>Shower Niches</b> It can be prefabricated as wall-shaped components or modules, seamlessly integrating with the wall structure. They demonstrate exceptional performance environments in bathrooms, public pool changing rooms and building basements. Size: 12"x12", 16"x16", 12"x20", 12"x28" or customizable.</p>
<p>XP Series</p>				
	<p><b>X205</b></p>	<p><b>X206</b></p>	<p><b>X207</b></p>	<p><b>X208</b></p>
	<p><b>Flexible XPS Tile Backer Board</b> Application: Wet areas, underfloor heating system, shower room system, etc. Color of the XPS Foam Blue &amp; others. Size Customizable. Thickness: 10mm, 12mm, 20mm, 30mm, 40mm, etc</p>	<p><b>XPS Fiber Cement Shower Tray</b> Durable, Ready-to-tile tray with 2% slope and adjustable drain. Easily cut to any size or shape, Fits any shower, and customizable for flexible installation.</p>	<p><b>Shower Curb</b> Prevents water spillage, Keeps floor dry, Stable support for shower doors. Or glass panels, Clearly defines shower area, Seamless waterproof integration.</p>	<p><b>XPS Shower Pan Waterproof Bathroom Tray</b> Characteristics: Eco-saving, lightweight, moisture-proof, easy construction, acid resistance Application: Wet areas, wash room, shower room, etc.</p>

# Waterproofing Series for Accessories



Waterproof Tape				
	T201	T8	TP203	P100
Waterproof Tape				
	P110	T180	T91PVC	T88PAD
Waterproof & Building Materials				
	T88RV	S002	B84	S61
Building Materials				
	B81	B82	B83	T39

# Professional Tile Installation System

**StruX**  
Systems

**Galitos**  
PROFESSIONAL TILING TOOL

**StruX**  
Systems

**StruX**  
Systems

**Galitos**  
PROFESSIONAL TILING TOOL

**StruX**  
Systems



13 14 15 16

08

04

06

05

07

11 12

09

10

18

20 21

19

17

1. GT3-1600 TILE CUTTER
2. GT2-1200 TILE CUTTER
3. GTDE-125X LARGE FORMAT SLAB CUTTER
4. GLA71206 TILE LAYING MACHINE
5. GLA1012-5 ELECTRIC VACUUM SUCTION CUP
6. GLA62216 ELECTRIC VACUUM SUCTION CUP
7. G1009 16-LINE 4D LASER LEVEL
8. G1010 TILE CHAMFERING CUTTING MACHINE
9. G1106 TILE EDGING AND GRINDING
10. G1013 MANUAL TILE CUTTER WHEEL
11. G1011 PATCH AND FINISHING TROWEL
12. G1012 PATCH AND FINISHING TROWEL
13. G1014 DIAMOND DISC 125MM
14. G1015 DIAMOND DISC 125MM
15. G1016 DIAMOND DISC 125MM
16. G1017 DIAMOND DISC 125MM
17. GLA2001 TILE LEVELING SYSTEM -RUSSIA
18. GLA2001 TILE LEVELING SYSTEM -RUSSIA
19. GLA 2002 T-SPIN LEVELING SYSTEM
20. GLA 2003 SPIN DOCTOR LEVELING CAP
21. GLA 2004 SPIN DOCTOR LEVELING BASE



**StruX**  
**Systems**