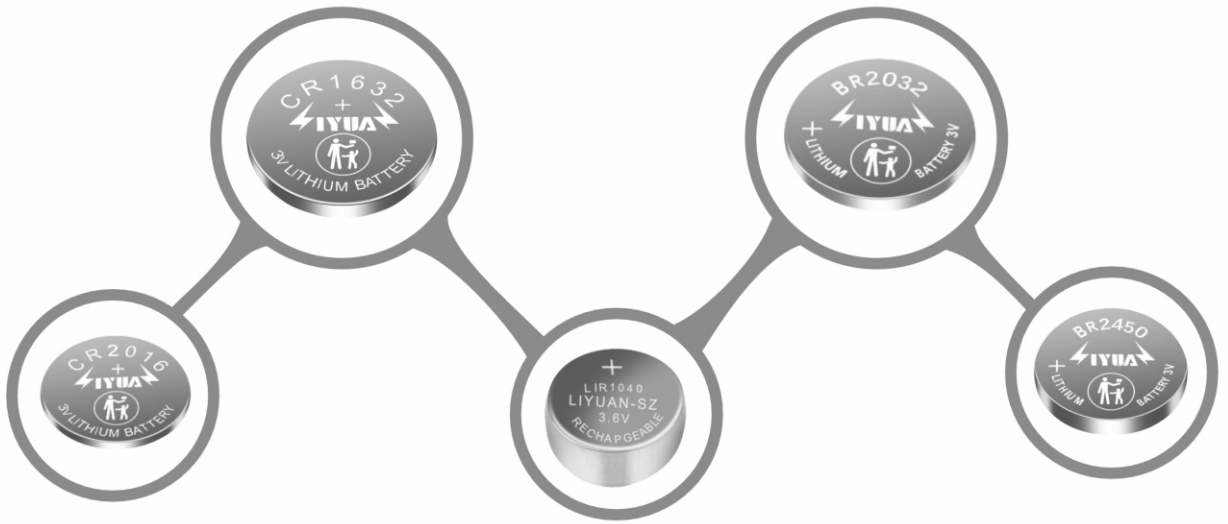


SUPRAENERGY



专业研发 / 生产 / 销售 **纽扣电池**

Professional research and development/production/sales of button batteries

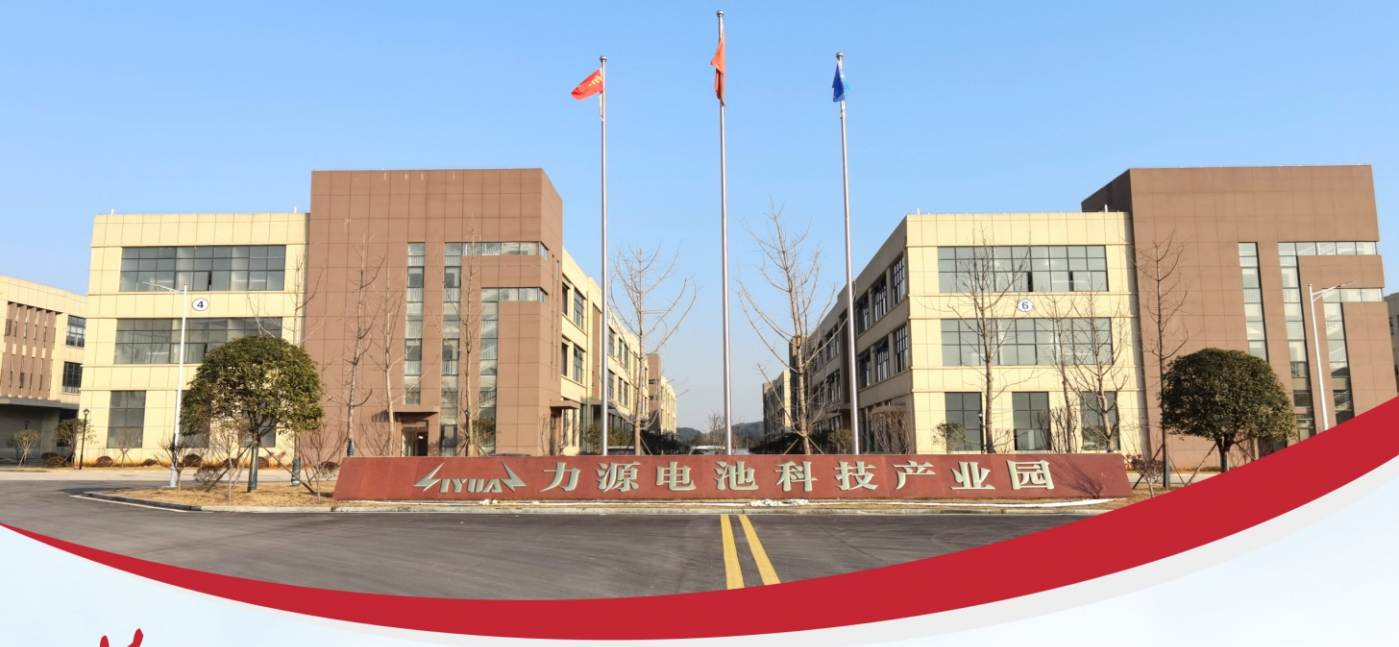


力源电池科技（深圳）有限公司

Liyuan Battery Technology (Shenzhen) Co., Ltd

力源电池科技（宜春）有限公司

Liyuan Battery Technology (Yichun) Co., Ltd



关于我们 » About Us

力源电池科技有限公司于2010年在深圳成立，2015年成为前海股份交易中心挂牌的第一家纽扣电池企业，2019年在江西有”锂都”之称的宜春建立力源电池科技产业园作为工业基地和研发基地。

力源电池科技多年来致力纽扣电池研发、生产、销售，公司拥有了一流的研发团队，并与北京航空材料研究所，山东重山光电等多个机构进行科研、合作，不停的对产品创新和升级，公司主营CR锂锰3V一次电池，LIR锂离子纽扣电池，HT系列以及BR宽温纽扣电池。

多年以来，公司对品质的不断追求，逐渐通过了ISO9001、ISO14001、UL、CE、RoHS、UN38.3等一系列认证，公司提供一站式OEM电池产品解决方案ODM电池产品解决方案，可以根据用户要求定制各种规格以及焊脚电池和挂牌电池，产品主要用于计算机主板、胎压计、电子货架标签、音乐卡、助听器、电子表、医疗产品、防监器、遥控器等.....

力源电池科技有限公司作为一家高新技术企业，志在不断追求世界尖端电源技术，跻身世界先进光电行业，打造中国锂电微型电源第一品牌。

Founded in 2010 in Shenzhen, Liyuan Battery Technology Co., Ltd. became the first button cell battery company listed on the Qianhai Equity Exchange in 2015. In 2019, it established the Liyuan Battery Technology Industrial Park in Yichun, Jiangxi, known as the "City of Lithium", as its industrial and research base.

Liyuan Battery Technology has been dedicated to the research, production, and sales of button cell batteries for many years. The company has a top-notch research and development team and has collaborated with institutions such as Beijing Aeronautical Materials Research Institute and Shandong Chongshan Optoelectronics for scientific research and cooperation. It constantly innovates and upgrades its products. The company's main products include CR lithium manganese 3V primary batteries, LIR lithium-ion button cells, HT series, and BR wide temperature button cells.

Over the years, the company has pursued a continuous pursuit of quality and has gradually obtained a series of certifications, including ISO9001, ISO14001, UL, CE, RoHS, UN38.3, etc. It provides one-stop OEM and ODM battery solutions, customizing various specifications, solder tab batteries, and branded batteries according to customer requirements. Its products are mainly used in computer motherboards, tire pressure monitors, electronic shelf labels, musical cards, hearing aids, electronic watches, medical devices, security monitors, remote controls, and more.

As a high-tech enterprise, Liyuan Battery Technology aims to continuously pursue world-leading power technology, enter the advanced optoelectronics industry, and build the first brand of lithium micro power supply in China.



产品特性 Product characteristics

- 01 电量持久，超大电流放电（30毫安可以放1小时以上，可以订做负30度15毫安放电1小时的1620）；
Long lasting battery life, extremely high current discharge (30 mA can be discharged for more than 1 hour, and 1620 can be customized for negative 30 degrees Celsius and 15 mA discharge for 1 hour)
- 02 产品不含汞、镉、铅等重金属有害物质，完全符合环保要求，严格的欧盟2006/66/EC电池指令，认证报告齐全；
The product does not contain harmful heavy metals such as mercury, cadmium, and lead, and fully meets environmental requirements. It complies with the strict EU 2006/66/EC battery directive and has complete certification reports;
- 03 通过20道工序生产制造，IQC自检品控，品质稳定保障；
Through 20 production processes, IQC self inspection and quality control, ensuring stable quality;
- 04 年自放量将 < 2%，5年仍持久保持出厂90%电量，全面提升电池持久力；
The annual self discharge capacity will be less than 2%, and the factory's battery capacity will remain at 90% for 5 years, comprehensively improving the battery endurance;
- 05 足容电量，容量比同行高出10%，严格质量把控与电量测试，出货良品率99.999%；
Full capacity of electricity, with a capacity 10% higher than that of peers, strict quality control and electricity testing, and a 99.999% yield rate for shipment;



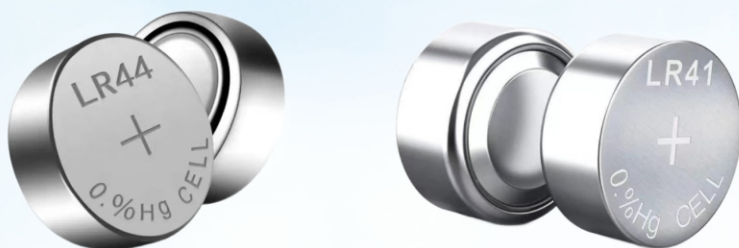
无汞纽扣式 锂锰电池系列

0%Hg coin Type Lithium Manganese Battery

型号 Model number	标称容量 Nominal capacity	直径 Diameter	高度 Height	平均重量 Average weight	标称电压 Nominal voltage	工作温度范围 Temperature range	IEC(JIS)
CR1220	40mAh	12.5mm	2.0mm	0.8g	3.0V	-20-60℃	CR1220
CR1225	50mAh	12.5mm	2.5mm	1.0g	3.0V	-20-60℃	CR1225
CR1616	50mAh	16.0mm	1.6mm	1.2g	3.0V	-20-60℃	CR1616
CR1620	70mAh	16.0mm	2.0mm	1.4g	3.0V	-20-60℃	CR1620
CR1625	90mAh	16.0mm	2.5mm	1.5g	3.0V	-20-60℃	CR1625
CR1632	120mAh	16.0mm	3.2mm	1.9g	3.0V	-20-60℃	CR1632
CR2016	85mAh	20.0mm	1.6mm	1.6g	3.0V	-20-60℃	CR2016
CR2025	150mAh	20.0mm	2.5mm	2.5g	3.0V	-20-60℃	CR2025
CR2032	210mAh	20.0mm	3.2mm	3.1g	3.0V	-20-60℃	CR2032
CR2050	320mAh	20.0mm	5.0mm	4.2g	3.0V	-20-60℃	CR2050
CR2430	280mAh	24.5mm	3.0mm	4.3g	3.0V	-20-60℃	CR2430
CR2477	1000mAh	24.5mm	7.7mm	8.5g	3.0V	-20-60℃	CR2477
CR2450	600mAh	24.5mm	5.0mm	6.2g	3.0V	-20-60℃	CR2450
CR123A	1600mAh	34.0mm	16.5mm	16.0g	3.0V	-20-60℃	CR123A

产品特性 Product characteristics

- 01 正极材料专利技术，实现电池高比能量(实现完全国产，中国“芯”)
Patented technology for positive electrode materials, achieving high specific energy of batteries (fully domestically produced, Chinese "core")
- 02 安全稳定，电力强劲，持久耐用，证书齐全。
Safe and stable, with strong power, durable, and complete certificates.
- 03 超长寿命和储存时间
Ultra long lifespan and storage time



1.5V 碱性锌锰扣式电池

1.5V alkaline manganese dioxide battery

型号规格 Type specification	电压 Voltage	尺寸 Size (mm)	容量 Capacity (mAh)
AG0/LR521	1.5V	5.8*2.1	10mAh
AG1/LR621	1.5V	6.8*2.1	15mAh
AG2/LR726	1.5V	7.9*2.6	27mAh
AG3/LR41	1.5V	7.9*3.6	43mAh
AG4/LR626	1.5V	6.8*2.6	22mAh
AG5/LR754	1.5V	7.9*5.4	68mAh
AG6/LR921	1.5V	9.5*2.1	26mAh
AG7/LR927	1.5V	9.5*2.7	45mAh
AG8/LR1120	1.5V	11.6*2.0	44mAh
AG9/LR936	1.5V	9.5*3.6	62mAh
AG10/LR1130	1.5V	11.6*3.0	80mAh
AG11/LR721	1.5V	7.9*2.1	20mAh
AG12/LR43	1.5V	11.6*4.2	115mAh
AG13/LR44	1.5V	11.6*5.4	160mAh
LR625	1.5V	16*6.2	200mAh

产品特性 Product characteristics

- 01 正极材料专利技术，实现电池高比能量(实现完全国产，中国“芯”)
Positive electrode material patent technology to achieve high specific energy of batter
- 02 超宽温度工业电池（-40℃+125℃），通过反复高温高湿测试实验；
Ultra wide temperature industrial battery (-40℃+125℃), through repeated high temperature and high humidity testing experiments;
- 03 适用于汽车胎压计，ETC，仪器仪表，智能物联卡，医疗设备，铁路船舶，机器人等极端环境。
Suitable for extreme environments such as automotive tire pressure gauges, ETCs, instrumentation, intelligent IoT cards, medical equipment, railway ships, robots, etc.
- 04 超长寿命和储存时间，绿色环保
Ultra long lifespan and storage time, green and environmentally friendly



BR >>>



CR+HT >>>

宽温电池 CR+HT . 全系列都可定制

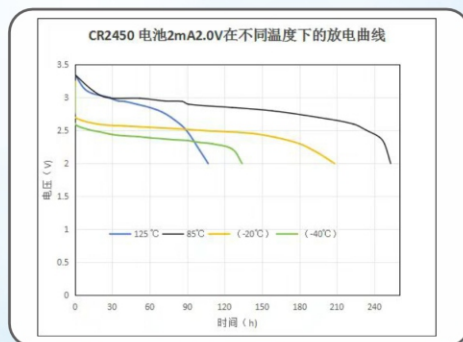
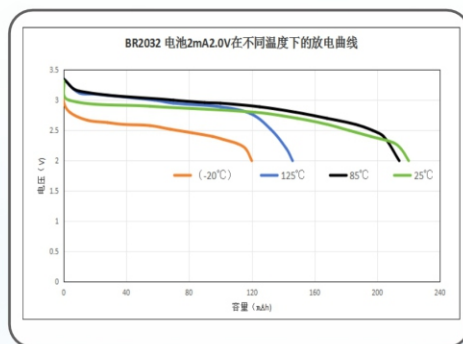
Wide temperature battery CR+HT (All series can be customized)

放电曲线图

Discharge curve

-40℃+125℃

型号 Type specification	标准电压 Voltage / V	标准容量 Capacity / mAh	尺寸 Size / mm
CR2450HT (BR2450)	3V	600	24.5*5.0
CR2050HT (BR2050)	3V	320	20*5
CR2032HT (BR2032)	3V	210	20*3.2
CR2025HT (BR2025)	3V	150	20*2.5
CR1632HT (BR1632)	3V	120	16*3.2
CR1620HT (BR1620)	3V	70	16*2.0
CR1225HT (BR1225)	3V	50	12.5*2.5
CR1220HT (BR1220)	3V	40	12.5*2.0
CR2016HT (BR2016)	3V	85	20*1.6

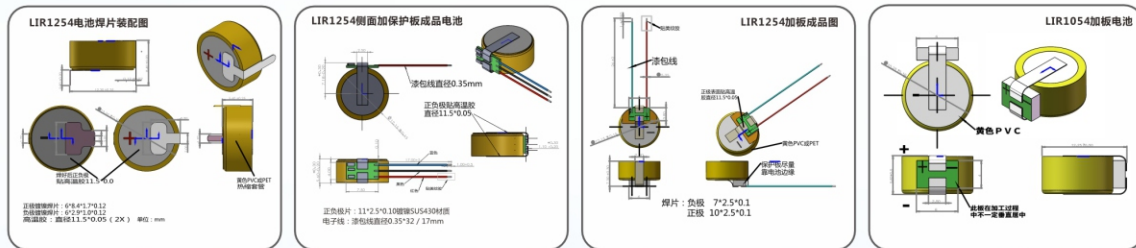


产品特性 Product characteristics

- 01 一站式TWS/可穿戴设备电池生产商，“新型号一个月出样”
One-stop TWS/ wearable device battery manufacturer, "New model one month out"
- 02 独特的密封结构及支撑环结构，具有严密的防漏性及储存性；
Unique sealing structure and support ring structure, with tight leak resistance and storage performance
- 03 产能50万Pcs/天，采用高精度激光分切、高精度电驱动封口等工艺，过程采用全工序追溯方法，保证电池的品质一致性。
The production capacity is 500000 Pcs/day, using high-precision laser cutting, high-precision electric drive sealing and other processes. The process adopts a full process traceability method to ensure the consistency of battery quality.



作业规范 Job specifications



型号 Type specification	标准电压 Voltage/V	标准容量 Capacity/mAh	最大放电电流 Maximum discharge current/mAh	内阻 Internal resistance/mΩ	尺寸 Size/mm	重量 Weight/g
LIR854	3.6V/3.7	25 ± 2	1C	<800	8*5.4	1.1 ± 0.2
LIR943	3.6V/3.7	27 ± 2	1C	<700	9*4.3	1.1 ± 0.2
LIR1040	3.6V/3.7	35 ± 2	1C	<650	10*4	1.1 ± 0.2
LIR1045	3.6V/3.7	40 ± 3	2C	<500	10*4.3	1.4 ± 0.2
LIR1054	3.6V/3.7	45 ± 2	2C	<450	10*5.4	1.4 ± 0.2
LIR1154	3.6V/3.7	55 ± 2	2C	<500	11*5.4	1.5 ± 0.2
LIR1243	3.6V/3.7	48 ± 2	2C	<500	12*4.3	1.9 ± 0.2
LIR1254	3.6V/3.7	65 ± 2	2C	<400	12*5.4	1.9 ± 0.2
LIR1654	3.6V/3.7	120 ± 2	1C	<500	16*5.4	3.5 ± 0.2
ML1220	3.0V	18 ± 2	1C	<30	12.5*2.0	0.85

▶ 干电池 Dry battery



▶ 纽扣电池 Button cell



▶ 柱形电池系列 Columnar battery series



碱性柱形电池系列

Alkaline Manganese Dioxide Battery 0.% Mercury & Cadmium

Model No	Jacke	Size (mm)	Nominal voltage	Nominal capacity	Weight(g)
LR1	Aluminium Foil	30X11.0	1.5V	1000MAH	6
LR03	Aluminium Foil	10X44.5	1.5V	1050MAH	11.5
LR06	Aluminium Foil	14X50.0	1.5V	2500MAH	23
LR14	Aluminium Foil	25X50.0	1.5V	7500MAH	71
LR20	Aluminium Foil	33X61.0	1.5V	16000MAH	143
6LR61	Aluminium Foil	17.5X26.5X48.5	9V	600MAH	51
LR61	Aluminium Foil	40X8.0	1.5V	600MAH	6.7

▶ 深加工（焊线） Deep processing (welding line)



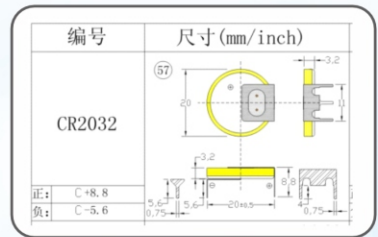
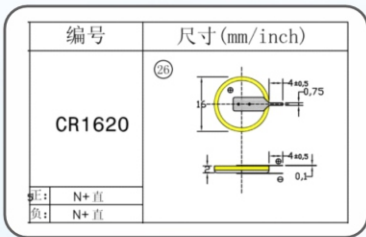
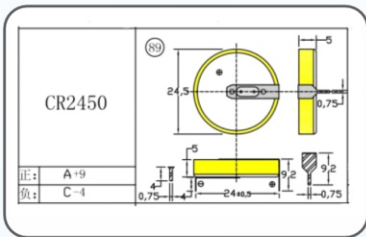
▶ 深加工（焊脚） Deep processing (welding feet)



▶ 电池座 Battery



▶ 焊脚焊线图纸 Welding leg welding wire drawing



▶ 力源电池科技（深圳）有限公司

Liyuan Battery Technology (Shenzhen) Co., Ltd

深圳工厂：深圳市宝安区航城街道联诚发声光电智慧产业园B栋
Shenzhen Factory: Building B, Liancheng Fasheng Optoelectronics Smart Industrial Park, Hangcheng Street, Bao'an District, Shenzhen

▶ 力源电池科技（宜春）有限公司

Liyuan Battery Technology (Yichun) Co., Ltd

江西工厂：江西省宜春市上高县工业园食品大道166号力源电池科技产业园
Jiangxi Factory: Liyuan Battery Technology Industrial Park, No.166 Food Avenue, Shanggao County Industrial Park, Yichun City, Jiangxi Province

官网: www.lydccn.com

邮箱: www.xuliqing@liyuancell.com



企业官网



企业微信