



# 天津福瑞斯特金属集团

## TIANJIN FOREST METAL GROUP



### 福瑞斯特金属制品(天津)有限公司

FRST METAL PRODUCTS (TIANJIN) CO.,LTD

地址: 天津市静海区大邱庄工业园  
Address: Daqiu Zhuang Industrial Park, Jinghai District, Tianjin  
手机: +86-18202225280  
Mobile: + 86-18202225280  
电话: +86-22-68122013  
Tel: + 86-22-68122013  
邮箱: bella@tjforestmetal.com  
Email: bella@tjforestmetal.com  
网址: www.tjforestmetal.com  
Website: www.tjforestmetal.com

天津福瑞斯特金属集团  
TIANJIN FOREST METAL GROUP  
PROFESSIONAL STEEL SUPPLIER

天津福瑞斯特金属集团

TIANJIN FOREST METAL GROUP

精诚合作 终生朋友 ▶

SINCERELY COOPERATION AND LIFELONG FRIEND

Welcome to China  
Tianjin Forest Metal Group



## 目录 CONTENTS

<b>1 企业概况 Company</b>	03-06
Company Profile	
Our Teams & Products	
Our Equipment	
<b>2 产品介绍 Product</b>	07-34
ERW Steel Pipes	07-10
Black Steel Pipes	
Painted Steel Pipes	
Pre Galvanized & Hot Dipped Galvanized Pipes	
Square & Rectangular Steel Pipes	11-12
Black Square & Rectangular Pipes	
Painted Square & Rectangular Pipes	
Pre Galvanized & Hot Dipped Galvanized Square Rectangular Pipes	
Seamless Pipe	13-14
Spiral Pipe & Special Pipes	15-16
Steel Props & Wire/Nails/Steel Strand	17-18
Frame Scaffolding (Fitting)	19-20
Beam/Channel & Bar	21-22
Angle Steel/Flat Steel	
H Beam/U Channel	
I Beam/T Bar	
C Channel/Z Channel	
HR/CR Steel Coils & Plates	23-24
Galvanized/Galvalume Coils & Plates	25-26
PPGI Coils & Plates	27-28
Corrugated sheets	29-30
Coil Size Chrage & Stainless Products	31-32
Aluminum Products	33-34

## ABOUT US

天津福瑞斯特金属集团坐落于天津工业区——大邱庄，是一家集钢管，钢卷，型材生产与销售为一体的集团公司。集团公司共占地 60000 平方米，年产量达 600000 吨。

我公司拥有完整、科学的质量认证管理体系，对于钢制成系列的产品，我们拥有下属 6 家分工厂，共 16 条自动焊接的生产线，月产量 50000 吨以上，镀锌生产线 6 条。国际贸易公司 2 家，天福瑞斯特金属集团是其中一家出口公司。

我们拥有 15 年丰富的出口销售团队经验，我们主要销售市场包括

**非洲市场：**利比亚、阿尔及利亚、埃塞俄比亚、索马里、吉布提、肯尼亚、坦桑尼亚、卢旺达、布隆迪、塞内加尔、冈比亚、马里、布基纳法索、利比里亚、科特迪瓦、加纳、贝宁、尼日利亚、乍得、中非、喀麦隆、刚果（布）、刚果（金）、马拉维市场、莫桑比克、博茨瓦纳、纳米比亚、南非、毛里求斯、留尼汪岛

**东南亚：**越南、老挝、柬埔寨、泰国、缅甸、新加坡、文莱、菲律宾、马来西亚

**美洲市场：**阿根廷、巴哈马、美国、玻利维亚、巴西、哥伦比亚、智利、哥斯达黎加、委内瑞拉、危地马拉、圭亚那、海地、牙买加、墨西哥、尼加拉瓜、巴拿马、秘鲁、乌拉圭、特立尼达和多巴哥、洪都拉斯

**中东市场：**埃及、伊拉克、以色列、阿曼、卡塔尔、沙特、叙利亚、阿联酋和也门、巴勒斯坦

我们的团队一直在努力，正在发展一些新的合作国家及区域。

我们主要出口销售产品

**钢管：**镀锌管，直缝焊管，螺旋管，无缝管，方矩管，镀锌方矩管，及异型管。

**钢卷：**镀锌卷，镀铝锌卷，彩涂卷，瓦楞板

**型材：**角钢，扁钢，H 型钢，C 型钢等

脚手架及配件等

**公司理念：**客户至上，奋斗进取。客户至上的服务理念严格要求我们为客户提供最优质的产品和服务。我们衷心的希望和来自世界各地的客户建立长远的贸易合作关系。我们全体员工欢迎您的到来！

Tianjin Forest Metal Group is located in Tianjin Industrial Zone - Daqiu Zhuang. It is one Integrated company of steel pipes, steel coils, profile steel manufacturing and sales. The group company covers total area of 60,000 square meters and has an annual output of 600,000 tons.

Tianjin Forest Metal Group has a complete and scientific quality certification management system. For the steel-made series of products, we have 6 sub-factories with a total of 16 automatic welding production lines, with a monthly output of more than 50,000 tons and 6 galvanizing production lines. Two international trading companies, Tianjin Forest Metal Group is one of the export companies.

We have 15 years of experience in export sales team and our main sales market including:

**African markets:** Libya, Algeria, Ethiopia, Somalia, Djibouti, Kenya, Tanzania, Rwanda, Burundi, Senegal, Gambia, Mali, Burkina Faso, Liberia, Côte d'Ivoire, Ghana, Benin, Nigeria, Chad, Central Africa, Cameroon, Congo (Brazzaville), Congo (Kinshasa), Malawi Market, Mozambique, Botswana, Namibia, South Africa, Mauritius, Reunion

**Southeast Asia:** Vietnam, Laos, Cambodia, Thailand, Myanmar, Singapore, Brunei, Philippines, Malaysia

**Americas Markets:** Argentina, Bahamas, USA, Bolivia, Brazil, Colombia, Chile, Costa Rica, Venezuela, Guatemala, Guyana, Haiti, Jamaica, Mexico, Nicaragua, Panama, Peru, Uruguay, Trinidad and Tobago, Honduras

**Middle East markets:** Egypt, Iraq, Israel, Oman, Qatar, Saudi Arabia, Syria, United Arab Emirates and Yemen, Palestine

Our team has been working hard and is developing some new partner countries and regions.

We mainly export products including:

**Steel pipe:** galvanized pipe, straight seam welded pipe, spiral pipe, seamless pipe, square pipe, galvanized square pipe, and shaped pipe.

**Steel coil:** galvanized coil, galvalume coil, ppgi coil, corrugated sheet

**Profile:** angle steel, flat steel, H-beam, C-shaped steel, etc.

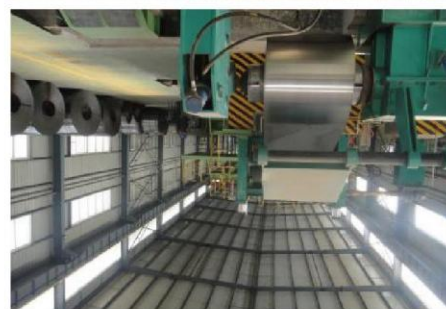
Scaffolding and accessories, etc

**Company philosophy:** Customer first, strive for progress. The customer-oriented service concept strictly requires us to provide our customers with the highest quality products and services. We sincerely hope to establish long-term trade relations with customers from all over the world. All of our staff welcome you!

## OUR TEAMS & PRODUCTS



**EQUIPMENT**

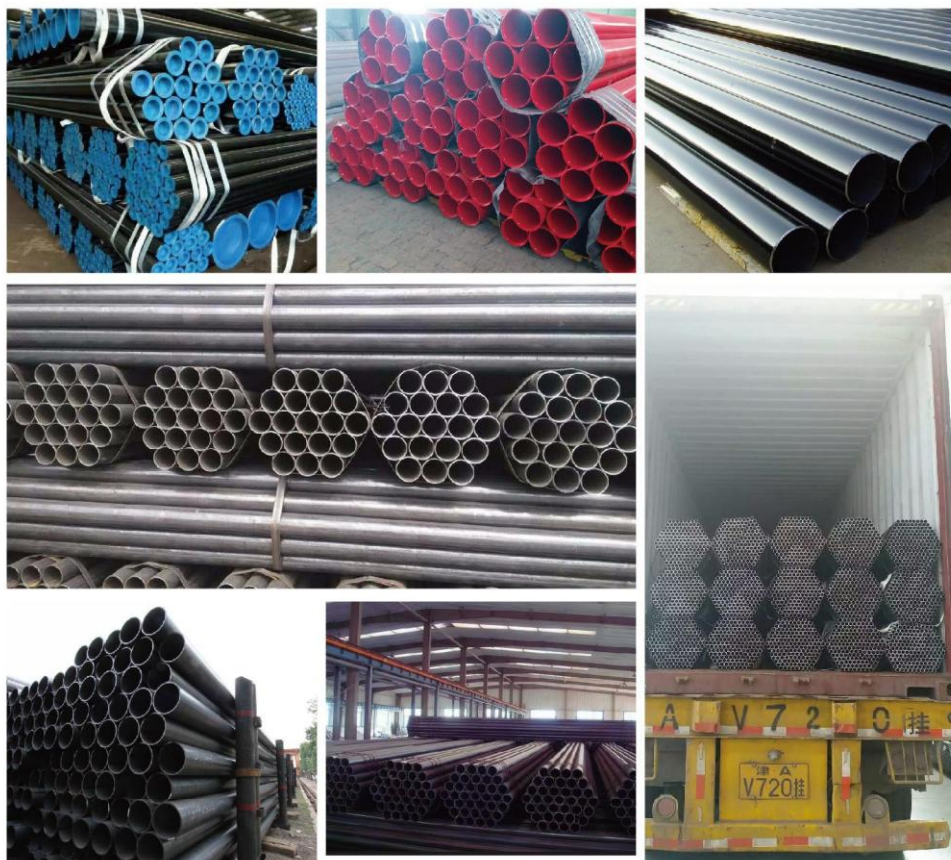


**生产设备 (production equipment)**

我们拥有世界先进的生产设备，运用崭新的管理理念及强大的专业技术力量，生产出符合国际标准的高质量产品，现代化的标准厂房和生产设备，敬业的技术专家和优秀的员工，必定生产出让您满意的产品

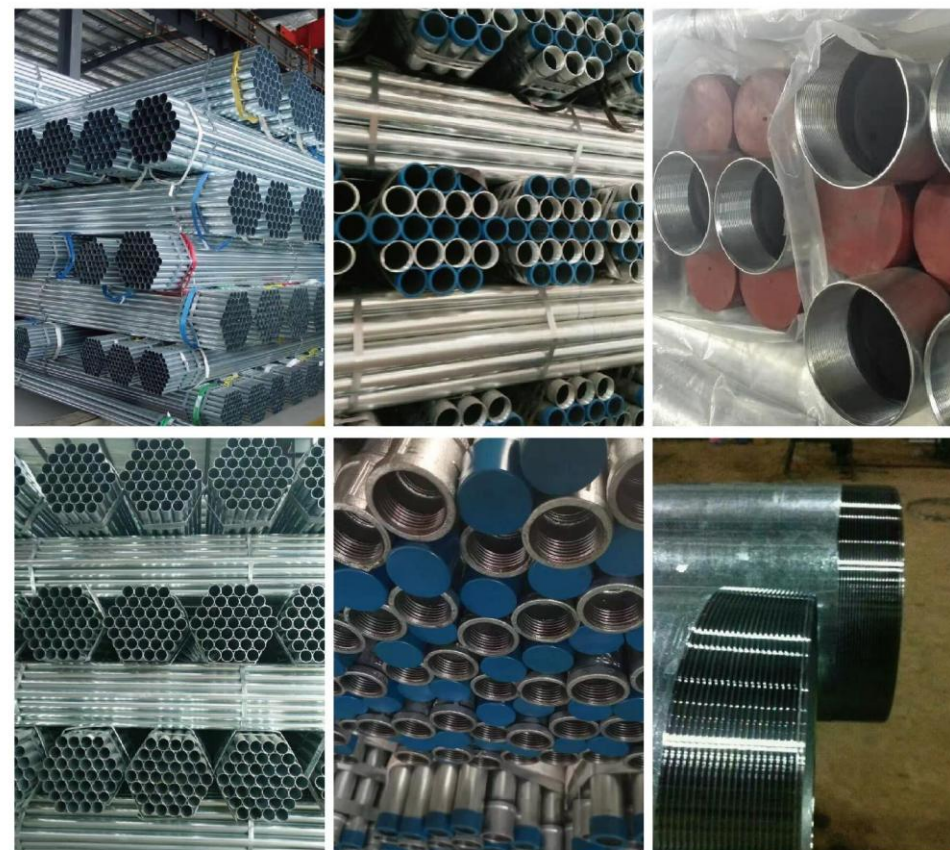
We have the world advanced production equipment, using the new management ideas and strong professional technical force, to produce quality products that meet international standards, modern standard workshops and production equipment, professional technical experts and excellent staff, must produce nuts you satisfied products

### ERW & Painted Steel Pipe



Surface	Steel Grade	Specification	Standard	Technology	Main Application
ERW Black steel pipes	Q235,Q345, A36,A500,A53 St37,St52, SS330,SS400, SS500 S235JR,S275, S355	OD:1/8-24" (10mm-610mm) WT:0.4-25mm.	GB ASTM DIN JIS EN	Hot Rolled Cold Rolled Black Annealed Full Black	Fluid transportation, Oil,Natural Gas, Chemical industry, Shipbuilding, Steel structure, Building,props, Scaffolding,etc
Painted steel pipes					

### Pre Galvanized & Hot Dipped Galvanized Pipe



Surface	Steel Grade	Specification	Standard	Main Application
Pre-Galvanized Steel Pipes	Q195,Q235,Q345, A36,A500,A53 St37,St52, SS330,SS400,SS500 S235JR,S275,S355	OD:1/8-8" (10mm-219mm) WT:0.4-2.4mm.	GB ASTM DIN JIS EN	Fluid transportation, Oil,Natural Gas, Chemical industry, Shipbuilding, Steel structure, Building,props, Scaffolding, Greenhouse,etc
Hot Dipped Galvanized Pipes		OD:1/2-24" (20mm-610mm) WT:0.4-1.0mm.		

## ASTM JIS DIN GB ROUND STEEL PIPE SIZE CHART

Nominal		OD (mm)				W.T
DN	Inch	ASME	JIS	DIN	GB	mm
15	1/2"	21.3	21.7	21.3	20	0.4-2.75
20	3/4"	26.7	27.2	26.9	25	0.4-2.75
25	1"	33.4	34.0	33.7	32	0.4-3.50
32	1.1/4"	42.2	42.7	42.4	42	0.4-3.75
40	1.1/2"	48.3	48.6	48.3	48	0.4-4.00
50	2"	60.3	60.5	60.3	60	0.4-4.00
65	2.1/2"	73.0	76.3	76.1	75	0.4-4.00
80	3"	88.9	89.1	88.9	88	0.9-4.50
90	3.1/2"	101.6	101.6	101.6	101	0.9-4.50
100	4"	114.3	114.3	114.3	114	0.8-4.50
125	5"	141.3	139.8	139.7	140	1.0-4.50
150	6"	168.3	165.2	168.3	165	1.0-10.00
200	8"	219.1	216.3	219.1	219	1.2-10.00
250	10"	273.0	267.4	273.0	273	2.0-25.00
300	12"	323.8	318.5	323.9	325	2.0-25.00
350	14"	355.6	355.6	355.6	355	2.0-25.00
400	16"	406.4	406.4	406.4	406	2.0-25.00
450	18"	457.2	457.2	457.0	457	2.0-25.00
500	20"	508.0	508.0	508.0	508	2.0-25.00
550	22"	558.8	558.8	558.0	558	2.0-25.00
600	24"	609.6	609.6	610.0	610	2.0-25.00
650	26"	660.4	660.4	660.4	660	2.0-25.00
700	28"	711.2	711.2	711.0	711	2.0-25.00
750	30"	762.0	762.0	762.0	762	2.0-25.00
800	32"	812.8	812.8	813.0	813	2.0-25.00
850	34"	863.6	863.6	863.6	863	2.0-25.00
900	36"	914.4	914.4	914.0	814	2.0-25.00
Other diameter and thickness can be customized according to your request						

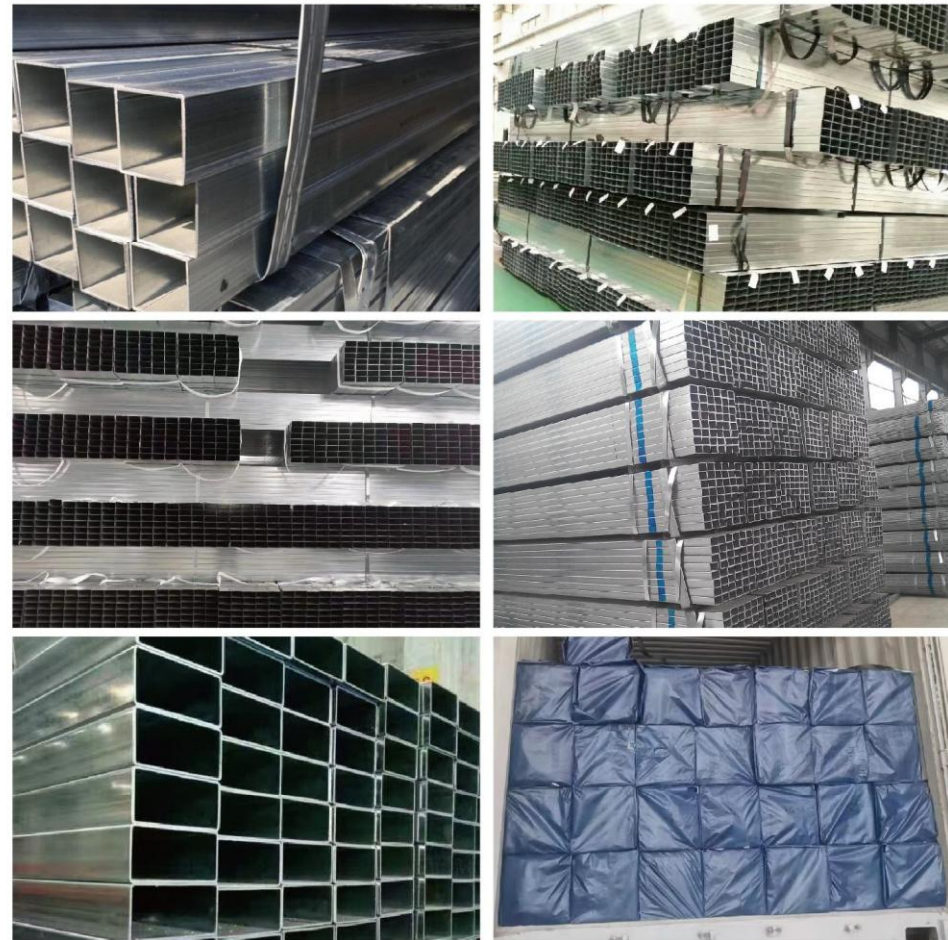
## SHS/RHS Hollow Section Pipe Size Chart

Size(mm)	Thickness(mm)	Size(mm)	Thickness(mm)
10*10	0.5-1.5	15*10	0.6-1.0
12*12	0.6-1.5	20*10	0.6-1.0
15*15	0.6-1.5	15*30	0.6-1.0
16*16	0.6-1.5	25*12	0.6-1.0
19*19	0.6-1.8	40*20	0.6-3.0
20*20	0.6-2.0	38*19	0.6-3.0
25*25	1.0-2.75	50*25	0.6-3.0
30*30	1.0-2.75	60*30	1.0-3.75
32*32	1.0-3.0	50*30	1.0-3.75
35*35	1.0-3.0	60*40	1.5-3.75
38*38	1.0-3.0	75*25	1.5-3.75
40*40	1.0-3.5	75*50	1.5-5.75
45*45	1.0-5.0	80*40	1.5-5.75
50*50	1.0-5.0	100*50	2.0-6.0
55*55	1.0-5.0	100*60	2.0-6.0
60*60	1.0-6.0	100*75	2.0-6.0
63.5*63.5	1.0-6.0	120*60	3.0-6.0
70*70	1.5-6.0	120*80	3.0-6.0
75*75	1.5-6.0	125*50	3.0-6.0
80*80	2.0-6.0	125*75	3.0-6.0
89*89	2.0-6.0	150*50	3.0-6.0
90*90	2.0-6.0	150*75	3.0-6.0
100*100	2.3-6.0	150*100	4.0-12
120*120	4.0-6.0	160*80	4.0-6.0
125*125	4.0-6.0	175*100	4.0-12
150*150	4.0-6.0	200*100	4.0-12
200*200	4.0-8.0	200*150	4.0-12
250*250	6.0-12	250*150	5.0-12
300*300	6.0-12	300*200	5.0-12
400*400	6.0-12	400*200	5.0-12

### Black Square & Rectangular Pipe



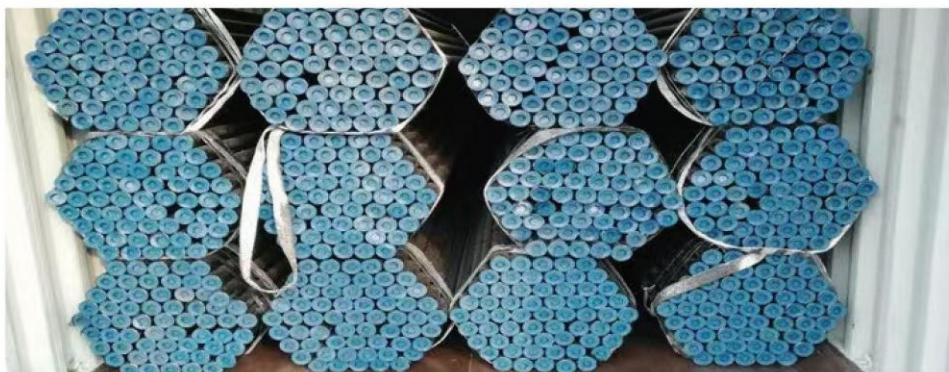
### Pre Galvanized & Hot Dipped Galvanized Square Rectangular Pipe



Surface	Steel Grade	Specification	Standard	Main Application
Black,Oiled, Painted, Hot dipped galvanized Pre-galvanized	Q195,Q235,Q345, A36,A500,A53 St37,St52, SS330,SS400,SS500 S235JR,S275,S355	Size: 10x10-600x600mm WT:0.5-25mm	GB ASTM DIN JIS EN	Ship Internal structure, Solar equipment, Steel structure, Auto parts, Buildings,etc

### Seamless Steel Pipes

1. Grade: 10#, 20#, 16Mn, Q345, ASTM A53/A106, API 5L,
2. Size: Outer Diameter (8-1240mm), Wall Thickness (1-200mm)
3. Application: The general structure, engineering support, mechanical processing, petroleum pipeline, fluid pipeline, etc
4. Export: Black painted, pipes cap, Beveled, groove, Fixed length.



### API ASTM JIS DIN EN GB Seamless Steel Pipes Size

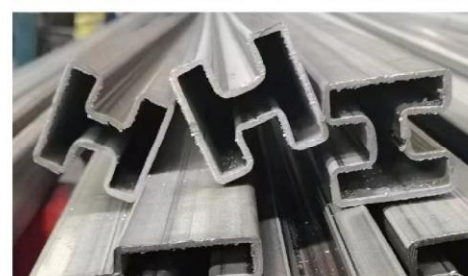
公称口径		外径	公称壁厚 T								
Nominal Pipe Size		Outside Diameter	Nominal Wall Thickness								
inch	DN	OD	SCH5s	SCH10s	SCH40s	STD	SCH40	SCH80s	XS	SCH80	XXS
1/8	6	10.3	--	1.24	1.73	1.73	1.73	2.41	2.41	2.41	--
1/4	8	13.7	--	1.65	2.24	2.24	2.24	3.02	3.02	3.02	--
3/8	10	17.1	--	1.65	2.31	2.31	2.31	3.2	3.2	3.2	--
1/2	15	21.3	1.65	2.11	2.77	2.77	2.77	3.73	3.73	3.73	7.47
3/4	20	26.7	1.65	2.11	2.87	2.87	2.87	3.91	3.91	3.91	7.82
1	25	33.4	1.65	2.77	3.38	3.38	3.38	4.55	4.55	4.55	9.09
1 1/4	32	42.2	1.65	2.77	3.56	3.56	3.56	4.85	4.85	4.85	9.7
1 1/2	40	48.3	1.65	2.77	3.68	3.68	3.68	5.08	5.08	5.08	10.15
2	50	60.3	1.65	2.77	3.91	3.91	3.91	5.54	5.54	5.54	11.07
2 1/2	65	73	2.11	3.05	5.16	5.16	5.16	7.01	7.01	7.01	14.02
3	80	88.9	2.11	3.05	5.49	5.49	5.49	7.62	7.62	7.62	15.24
3 1/2	90	101.6	2.11	3.05	5.74	5.74	5.74	8.08	8.08	8.08	--
4	100	114.3	2.11	3.05	6.02	6.02	6.02	8.56	8.56	8.56	17.12
5	125	141.3	2.77	3.4	6.55	6.55	6.55	9.53	9.53	9.53	19.05
6	150	168.3	2.77	3.4	7.11	7.11	7.11	10.97	10.97	10.97	21.95
8	200	219.1	2.77	3.76	8.18	8.18	8.18	12.7	12.7	12.7	22.23
10	250	273.1	3.4	4.19	9.27	9.27	9.27	12.7	12.7	15.09	25.4
12	300	323.9	3.96	4.57	9.53	9.53	10.31	12.7	12.7	17.48	25.4
14	350	355.6	3.96	4.78	--	9.53	11.13	--	12.7	19.05	--
16	400	406.4	4.19	4.78	--	9.53	12.7	--	12.7	21.44	--
18	450	457.2	4.19	4.78	--	9.53	14.27	--	12.7	23.83	--
20	500	508	4.78	5.54	--	9.53	15.09	--	12.7	26.19	--
22	550	558.8	4.78	5.54	--	9.53	--	--	12.7	28.58	--
24	600	609.6	5.54	6.35	--	9.53	17.48	--	12.7	30.96	--
26	650	660.4	--	--	--	9.53	--	--	12.7	--	--
28	700	711.2	--	--	--	9.53	--	--	12.7	--	--
30	750	762	6.35	7.92	--	9.53	--	--	12.7	--	--
32	800	812.8	--	--	--	9.53	17.48	--	12.7	--	--
34	850	863.6	--	--	--	9.53	17.48	--	12.7	--	--
36	900	914.4	--	--	--	9.53	17.48	--	12.7	--	--
38	950	965.2	--	--	--	9.53	--	--	12.7	--	--

LSAW/SSAW Spiral Steel Tubes L:1-15M



Outer diameter	Thickness
mm	mm
219	6-8
273	6-10
325	6-14
377	6-14
426	6-16
478	6-16
508	6-18
529	6-18
610	6-19
630	6-19
720	6-22
820	7-22
920	8-23
1016	8-23
1020	8-23
1220	8-23
1420	10-23
1620	10-23
1820	10-25.4
2020	10-25.4
2200	10-25.4
2420	10-25.4
2620	10-25.4
2820	10-25.4
3000	10-25.4

All kinds of shaped steel pipes can be customized



**MIDDLE EAST OR GERMAN PROP**



adjustable length	outer tube	inner tube	Wall thickness
1400-2700mm	60.3mm	48.3mm	from 1.5-4.0mm
1600-2700mm	60.3mm	48.3mm	
1620-2640mm	60.3mm	48.3mm	
2000-4000mm	60.3mm	48.3mm	
2200-4000mm	60.3mm	48.3mm	
3000-5500	60.3mm	48.3mm	
surface treatment	painted,powder coated,electro galvanized or hot dip galvanized		



**SPANISH PROP**



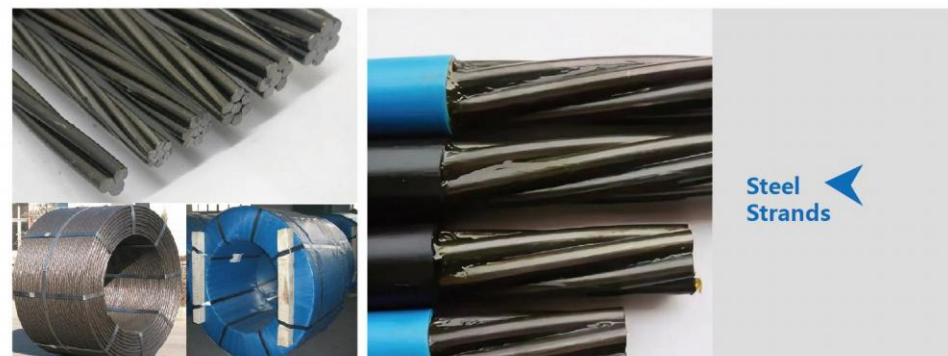
adjustable length	outer tube	inner tube	Wall thickness
800-1400mm	48mm	40mm	from 1.5-2.5mm
1600-3000mm	48mm	40mm	
2000-3500mm	48mm	40mm	
2200-4000mm	48mm	40mm	
surface treatment	painted,powder coated,electro galvanized or hot dip galvanized		



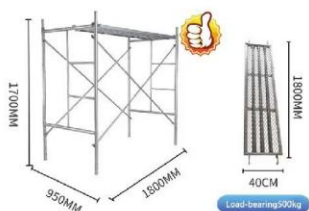
**ITALIAN PROP**



adjustable length	outer tube	inner tube	Wall thickness
1600-2900mm	56mm	48mm	from 1.5-2.5mm
1800-3100mm	56mm	48mm	
2000-3600mm	56mm	48mm	
2200-4000mm	56mm	48mm	
surface treatment	painted,powder coated,electro galvanized or hot dip galvanized		



### Frame scaffold system



NaMe	Specification(MM)	Surface TreatMent
Mobile scaffolding	H1930*L1800*W1250*T2.0	Painted / Galvanized
Mobile scaffolding	H1900*L1800*W1025*T2.0	Painted/Galvanized
Mobile scaffolding	H1700*L1800*W950*T2.0	Painted / Galvanized
Mobile scaffolding	H1700*L1800*W950*T1.5	Painted / Galvanized
Mobile scaffolding	H1700*L1800*W950*T1.2	Painted / Galvanized
Mobile scaffolding	H1000*L1800*W1250*T2.0	Painted / Galvanized
Mobile scaffolding	H1000*L1800*W950*T2.0	Painted / Galvanized
Mobile scaffolding	H1000*L1800*W1250*T1.2	Painted / Galvanized
Mobile scaffolding	H1000*L1800*W950*T1.2	Painted / Galvanized

### Fastener



Fixed Clamp



G Clamp/Beam Clamp



Swivel Clamp



LimPet Clamp



Joint Pin



Sleeve Coupler



Bone Joint



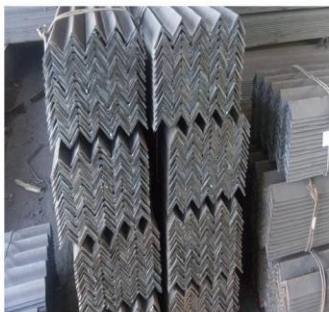
Forged Clamp

Frame scaffolding is one of the most widely used scaffolding. Frame scaffolding has a simple disassembly, good bearing performance, safety and reliability.

Frame scaffolding main application:

1. For the top branch building, halls, bridges, viaducts, tunnels and other formwork support within the top.
2. Inside and outside the row grid scaffolding of high-rise building.
3. For active work platform of electrical installation, hull built and other renovation works.
4. For temporary dormitory, warehouse or shed.
5. For the erection of temporary grandstands and bleachers.





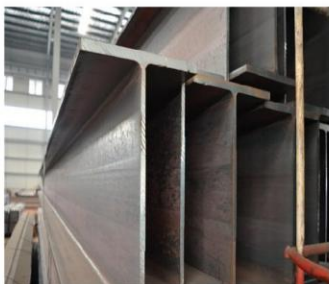
**ANGLE STEEL**

Name	Steel Grade	Size mm	Executive Standard	Main Application
Angle steel	Q235,Q345	Equal steel angle bar	GB	Applied in building and steel-structure
Angle iron	SS400	20x20-250x250mm	JIS	
Angle bar	ST37-2 ST52-3 S235JR/S355JR	Unequal steel angle bar 25x16-200x125mm	DIN EN	



**FLAT STEEL**

Name	Steel Grade	Size mm	Executive Standard	Main Application
Flat steel	Q235,Q345	GB	GB	Applied in building and steel-structure
Flat iron	SS400	JIS	JIS	
Flat bar	ST37-2 ST52-3	DIN	DIN	
	S235JR/S355JR	EN	EN	



**H BEAM**

Name	Steel Grade	Size mm	Executive Standard	Main Application
H beam	Q235,Q345	100x100-500x500(HW)	GB	Applied in steel structure of industrial and civil
	SS400	150-600x100-300(HM)	JIS	
	ST37-2 ST52-3	200-1000x100-300(HN)	DIN	
	S235JR/S355JR		EN	



**U CHANNEL**

Name	Steel Grade	Size mm	Executive Standard	Main Application
U CHANNEL	Q235,Q345 SS400 ST37-2 ST52-3 S235JR/S355JR	50-400x4.5-14.5mm	GB JIS DIN EN	Applied in Decoration, outdoor Advertising boards, steel structure board room



**I BEAM**

Name	Steel Grade	Size mm	Executive Standard	Main Application
I beam	Q235,Q345 SS400 ST37-2 ST52-3 S235JR/S355JR	80x40x20x2.5mm-300x80x20x3mm	GB JIS DIN EN	Widely used in steel structure purlin, wall beams, be combined into a lightweight roof trusses, brackets and other building components. also be used for mechanical light manufacturing in the column, beam and arm.



**T BAR**

Name	Steel Grade	Size mm	Executive Standard	Main Application
T bar	Q235,Q345	50x100x6x8mm-	GB	Applied in building and steel-structure
T type steel	SS400	200x400xx13x21mm	JIS	
	ST37-2 ST52-3		DIN	
	S235JR/S355JR		EN	
	AS/NZS 3679.1		Australia	



**C CHANNEL**

Name	Steel Grade	Size mm	Executive Standard	Main Application
C channel C type steel	Q235,Q345	10#/12#/14#/16#/18#	GB	Applied in building, steel-structure, bridge, vehicles, brackets, machinery, etc
	SS400	20#/22#/24#/25#/27#	JIS	
	ST37-2 ST52-3	28#/30#/32#/36#/40#	DIN	
	S235JR/S355JR	45#/50#/55#/56#/63#	EN	
	AS/NZS 3679.1		Australia	



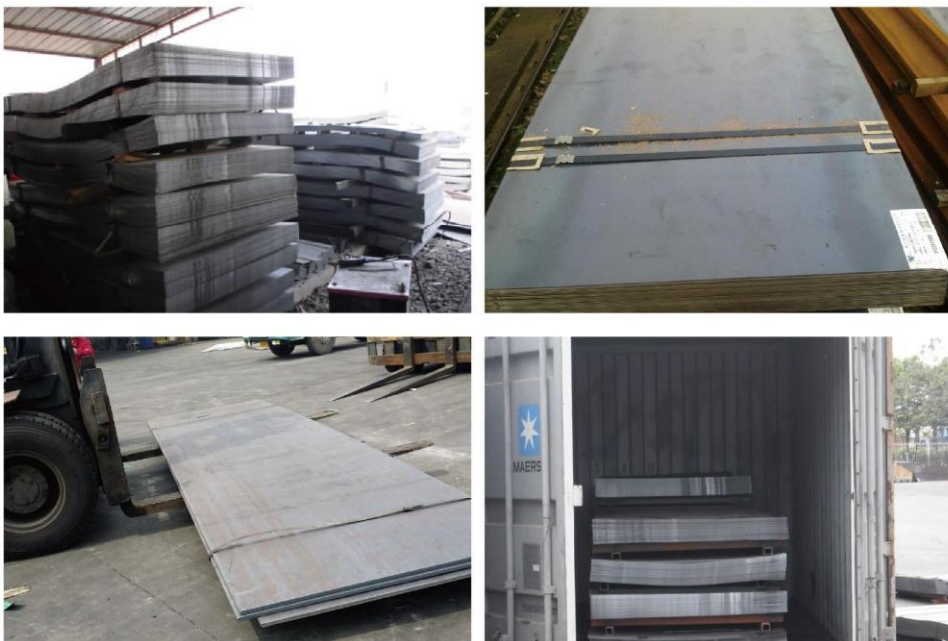
**Z CHANNEL**

Name	Steel Grade	Size mm	Executive Standard	Main Application
Z channel Z type steel	Q235,Q345	100x40x20x2.0mm-	GB	Widely used in automobiles, railway vehicles, construction doors and windows, transportation, shelves, electrical cabinets, highway guardrail, steel construction, container, etc
	SS400	300x85x25x4.0mm	JIS	
	ST37-2 ST52-3		DIN	
	S235JR/S355JR		EN	

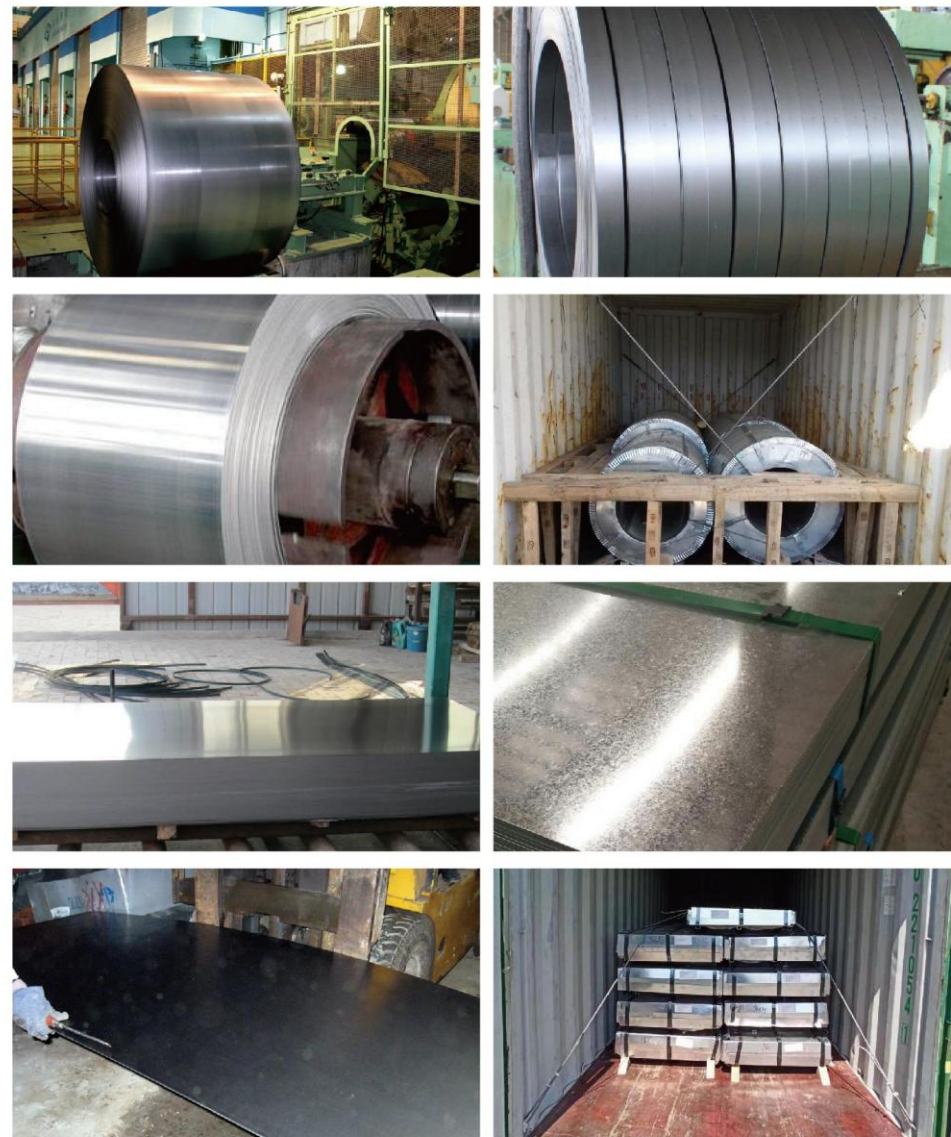
HR Hot rolled Coils and Sheets/Plates



Dimensions:1.2-50mm\*500-1500mm\*C  
 Mainly Grade:Q235/SS400/A36/S235JR/S355JR,St37-2,etc  
 Packaging Detail:on pallet(Sheets/Plates)

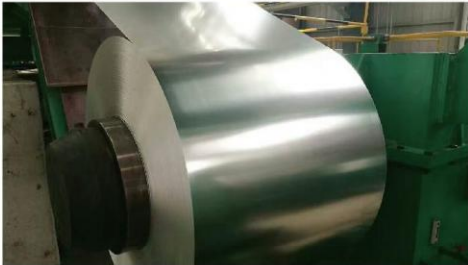
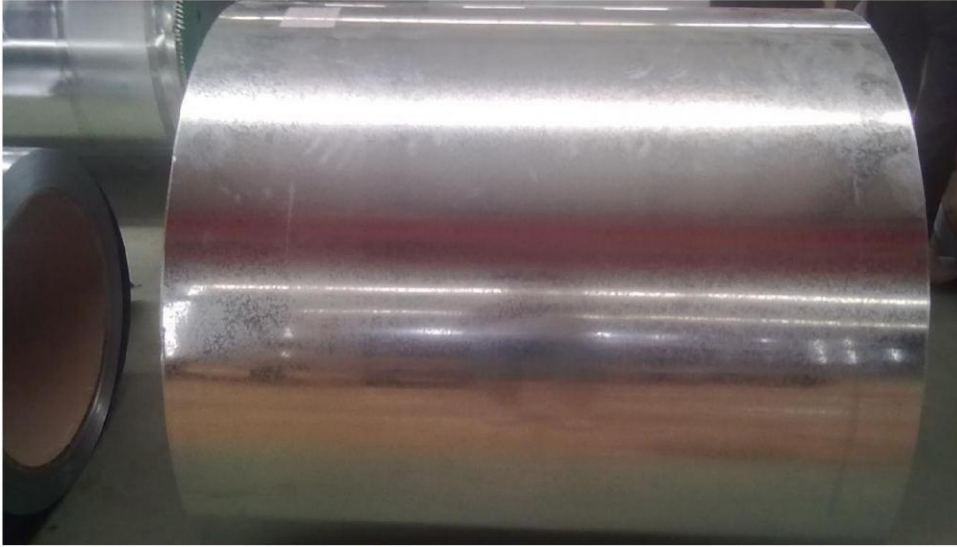


CR Coils and Plates

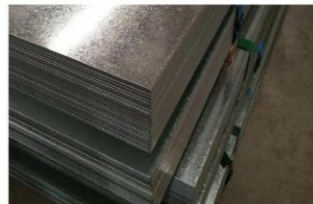


Size:0.2-4mm\*600-2000mm  
 Grade:Q195A-Q235A,Q195AF-Q235AF,Q295A(B)-Q345A(B);SPCC,SPCD,SPCE,ST12-15;DC01-06,etc

**GI COILS/GALVANIZED COILS AND PLAIN SHEETS**



**Main steel grades:**  
 DX51D+Z,DX52D+Z,DX53D+Z,DX54D+Z,S220GD+Z,  
 S250GD+Z,S280GD+Z,S320GD+Z,SGCC,SGHC,  
 SGCD1,SGCD2,SGCD3,SGC 340,SGC 400.  
**Spangle:**small spangle,normal spangle,big spangle  
**Rolling range:** Thickness\*Width\*Length  
 0.12-3.0mm\*50-1500mm\*as per reques



**GL COILS/GALVLUME COILS AND PLAIN SHEETS**



**Thickness\*Width\*Length** 0.12-3.0mm\*50-1500mm\*as per request  
**Surface:**Anti fingerprints,normal

PPGI---Prepainted galvanised steel coils



Corrugated steel plate main application:

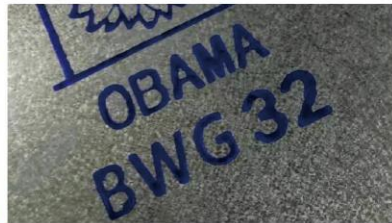
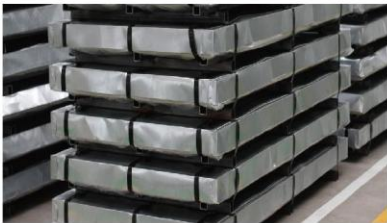
Corrugated plate, also known as roofing steel plate, profiled steel plate, roofing steel tile, etc., is a type of corrugated plate made of steel plate that is rolled and cold bent into various waveforms. It is suitable for the roof, wall, and interior wall decoration of industrial and civil buildings, warehouses, special buildings, and large-span steel structure houses. It has the characteristics of high strength, rich color, convenient and fast construction, earthquake resistance, fire prevention, rain resistance, long service life, and maintenance free, Now widely promoted and applied.



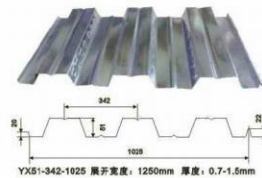
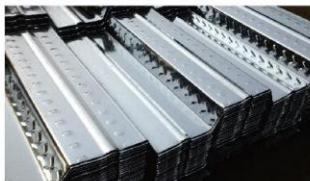
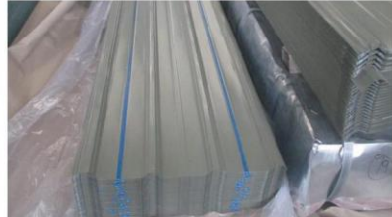
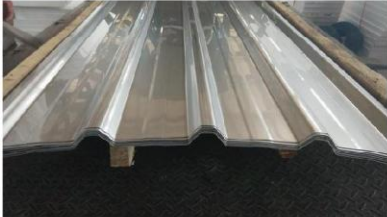
**Galvanized/Galvalume Corrugated sheet/Decking Sheet**



665-682/750-762  
800-820/900-925  
900-914/1000

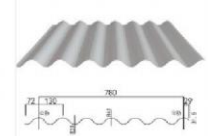


1050/1200



**Decking Sheets**

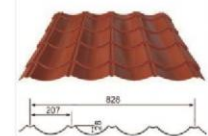
**PPGI/PPGL Color Corrugated Sheet**



YX31.5-130-780型		
压型钢板型号TYPE	WAV780	单位
有效覆盖宽度(MM)EFFECT WIDTH	780	mm
展开宽度(MM)FEEDING WIDTH	1000	mm
板厚(MM)THICKNESS	0.5	0.6
截面惯性矩(CM <sup>2</sup> /M)SECTION INERTIA	7.2	8.64
截面抵抗矩(CM <sup>3</sup> /M)SECTION RESISTANC	4.64	5.55



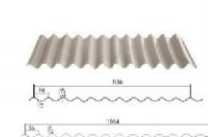
YX35-125-750(V125)型		
压型钢板型号TYPE	YX35-125-750	用途
有效覆盖宽度(MM)EFFECT WIDTH	750	APPLICATION
展开宽度(MM)FEEDING WIDTH	1000	
板厚(MM)THICKNESS	0.5	0.6
截面惯性矩(CM <sup>2</sup> /M)SECTION INERTIA	11.54	13.85
截面抵抗矩(CM <sup>3</sup> /M)SECTION RESISTANC	6.23	7.48
		屋面板
		POOF PANEL



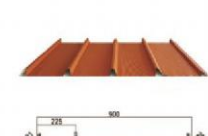
YX28-207-828型		
压型钢板型号TYPE	YX28-207-828	用途
有效覆盖宽度(MM)EFFECT WIDTH	850	APPLICATION
展开宽度(MM)FEEDING WIDTH	1000	
板厚(MM)THICKNESS	0.6	0.5
截面惯性矩(CM <sup>2</sup> /M)SECTION INERTIA	17.76	14.8
截面抵抗矩(CM <sup>3</sup> /M)SECTION RESISTANC	14.76	12.32
		屋面板
		POOF PANEL



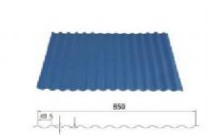
YX25-205-820(拱弧型)		
压型钢板型号TYPE	YX25-205-820	用途
有效覆盖宽度(MM)EFFECT WIDTH	820	APPLICATION
展开宽度(MM)FEEDING WIDTH	1000	
板厚(MM)THICKNESS	0.5	0.6
截面惯性矩(CM <sup>2</sup> /M)SECTION INERTIA	4.38	5.32
截面抵抗矩(CM <sup>3</sup> /M)SECTION RESISTANC	7.18	8.55
		屋面板
		POOF PANEL



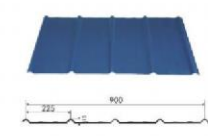
YX18-76-836/1064(弧形型)		
压型钢板型号TYPE	YX18-76-836/1064	用途
有效覆盖宽度(MM)EFFECT WIDTH	836	APPLICATION
展开宽度(MM)FEEDING WIDTH	1000/1219	
板厚(MM)THICKNESS	0.5	0.6
截面惯性矩(CM <sup>2</sup> /M)SECTION INERTIA	2.45	2.94
截面抵抗矩(CM <sup>3</sup> /M)SECTION RESISTANC	2.57	3.07
		屋面板
		POOF PANEL



YX15-225-900(小波纹)		
压型钢板型号TYPE	YX15-225-900	用途
有效覆盖宽度(MM)EFFECT WIDTH	900	APPLICATION
展开宽度(MM)FEEDING WIDTH	1000	
板厚(MM)THICKNESS	0.4	0.6
截面惯性矩(CM <sup>2</sup> /M)SECTION INERTIA	5.3	2.25
截面抵抗矩(CM <sup>3</sup> /M)SECTION RESISTANC	2.82	2.50
		0.6
		3.04
		4.31
		屋面板
		POOF PANEL



YX14-63.5-850(弧形型)		
压型钢板型号TYPE	YX14-63.5-850	用途
有效覆盖宽度(MM)EFFECT WIDTH	850	APPLICATION
展开宽度(MM)FEEDING WIDTH	1000	
板厚(MM)THICKNESS	0.5	0.6
截面惯性矩(CM <sup>2</sup> /M)SECTION INERTIA	1.84	2.25
截面抵抗矩(CM <sup>3</sup> /M)SECTION RESISTANC	2.04	2.50
		0.8
		3.04
		3.37
		屋面板
		POOF PANEL



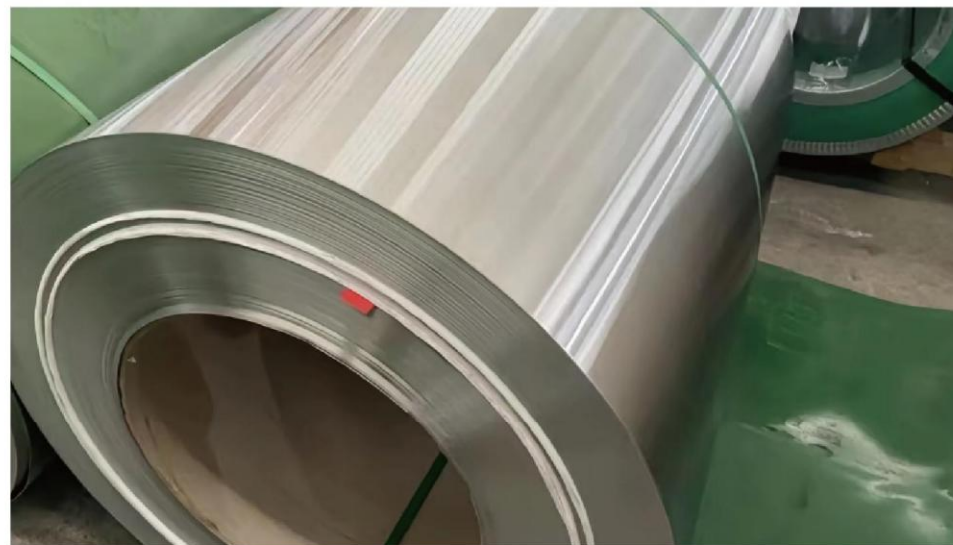
YX15-225-900型		
压型钢板型号TYPE	YX15-225-900	用途
有效覆盖宽度(MM)EFFECT WIDTH	900	APPLICATION
展开宽度(MM)FEEDING WIDTH	1000	
板厚(MM)THICKNESS	0.4	0.5
截面惯性矩(CM <sup>2</sup> /M)SECTION INERTIA	5.3	6.65
截面抵抗矩(CM <sup>3</sup> /M)SECTION RESISTANC	2.82	3.56
		0.6
		8.03
		4.31
		屋面板
		POOF PANEL

### Meters per Ton of Different Width Galvanized/Galvalume Coil

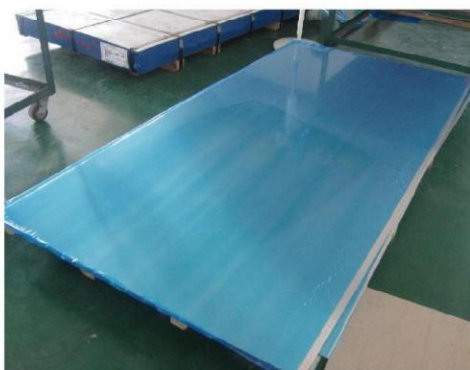
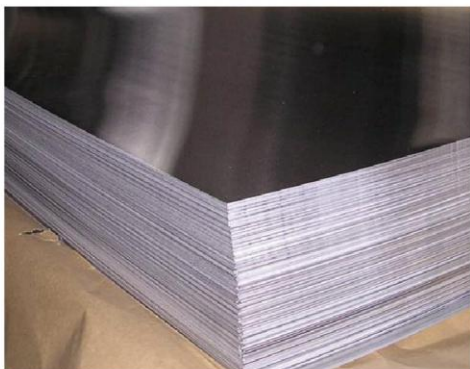
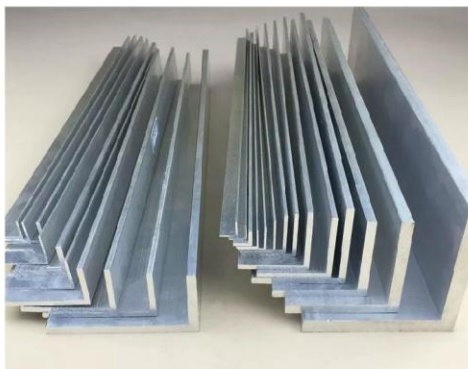
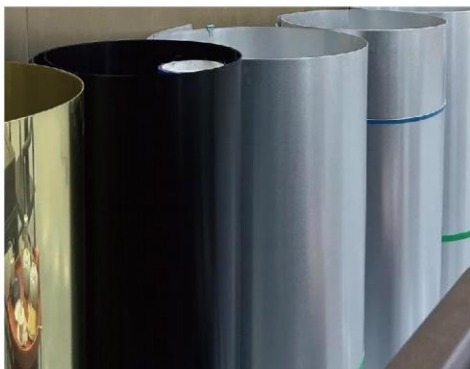
Thickness/Width mm	750mm m/ton	762mm m/ton	914mm m/ton	1000mm m/ton	1200mm m/ton	1220mm m/ton	1250mm m/ton
0.13	1307	1286	1072	980	817	803	784
0.14	1213	1194	996	910	758	746	728
0.15	1132	1115	929	849	708	696	679
0.16	1062	1045	871	796	663	653	637
0.17	999	983	820	749	624	614	599
0.18	944	929	774	708	590	580	566
0.19	894	880	734	670	559	550	536
0.20	849	836	697	637	531	522	510
0.21	809	796	664	607	506	497	485
0.22	772	760	634	579	483	475	463
0.23	738	727	606	554	462	454	443
0.24	708	697	581	531	442	435	425
0.25	679	669	557	510	425	418	408
0.26	653	643	536	490	408	402	392
0.27	629	619	516	472	393	387	377
0.28	607	597	498	455	379	373	364
0.29	586	576	481	439	366	360	351
0.30	566	557	465	425	354	348	340
0.31	548	539	450	411	342	337	329
0.32	531	522	436	398	332	326	318
0.33	515	507	422	386	322	316	309
0.34	500	492	410	375	312	307	300
0.35	485	478	398	364	303	298	291
0.36	472	464	387	354	295	290	283
0.37	459	452	377	344	287	282	275
0.38	447	440	367	335	279	275	268
0.39	436	429	357	327	272	268	261
0.40	425	418	348	318	265	261	255
0.41	414	408	340	311	259	255	249
0.42	404	398	332	303	253	249	243
0.43	395	389	324	296	247	243	237
0.44	386	380	317	290	241	237	232
0.45	377	372	310	283	236	232	226
0.46	369	363	303	277	231	227	222
0.47	361	356	297	271	226	222	217
0.48	354	348	290	265	221	218	212
0.49	347	341	284	260	217	213	208
0.50	340	334	279	255	212	209	204

### Stainless Products

Grade	201/202/304/304L/306/316L/410/430,etc
Surface	2B,BA,Bolished,Bright
Steel Standard	GB/T4237-2009 GB/T3280-2007 JIS G4304-2005 ASTM A240/240M-10
Technology	Hot rolled/Cold rolled
Place of Origin	China



Aluminum Products



Material	1000 Series:1050/1060/1071/1100
	2000 Series:2011/2014/2017/2024/2219
	3000 Series:3003/3004/3005/3105
Material	5000 Series: 5005/5050/5042/5052/5056/5083/5086/5754
	6000 Series: 6060/6061/6063/6082
	7000 Series: 7049/7050/7072/7075/7175
	8000 Series: 8011
Temper	O-H112 /T3-T8 /T351-T651 /T351-T851
Surface	Bright,polished,hair line,brush,sand blast,checkered,embossed,etching,etc
Application	1)Further making utensil.
	2)Solar reflective film
	3)The appearance of the building
	4)Interior decorating:ceilings,walls,etc.
	5)Furniture cabinets
	6)Elevator decoration
	7)Signs,nameplate,bags making.
	8)Decorated inside and outside the car
	9)Household appliances:refrigerators,microwave ovens,audio equipment,etc.
	10)The consumer electronics:mobile phones,digital cameras,MP3,U disk,etc.
	11) Industry Products