

山东沪江加工钢结构类型明细
Megasteel Detailed Types of
Fabricated Steel Structures

2024.07

钢柱类 H型钢柱
Steel Columns
H-Shaped columns



钢柱类 箱型柱
Steel Columns
Steel box columns



钢柱类 圆管柱

Steel Columns

Steel circular tube columns



钢柱类 十字柱
Steel Columns
Cross-shaped columns



钢柱类 T型钢柱
Steel Columns
T-Shaped columns



With Mega, Without Leak!

屋面不漏，沪江钢构®

钢柱类 格构柱
Steel Columns
Lattice columns



With Mega, Without Leak!



屋面不漏，沪江钢构®

钢梁类 H型钢梁
Steel Beams
H-Shaped steel beams



钢梁类 箱型钢梁
Steel Beams
Box-Shaped steel beams



钢支撑 圆管支撑
Steel Bracing
Circular tube bracing



钢支撑 圆钢支撑
Steel Bracing
Round steel bracing



钢支撑 角钢支撑
Steel Bracing
Angle steel bracing



钢桁架 方管桁架
Steel Truss
Square tube truss



钢桁架 圆管桁架
Steel Truss
Circular tube truss



钢桁架 H型钢桁架
Steel Truss
H-Shaped steel truss



方管檩条

Square tube purlin



钢楼梯
Steel staircase



钢爬梯 Steel ladder



With Mega, Without Leak!

屋面不漏，沪江钢构®

钢地脚锚栓 Steel base anchor bolt



钢预埋件

Steel embedded parts

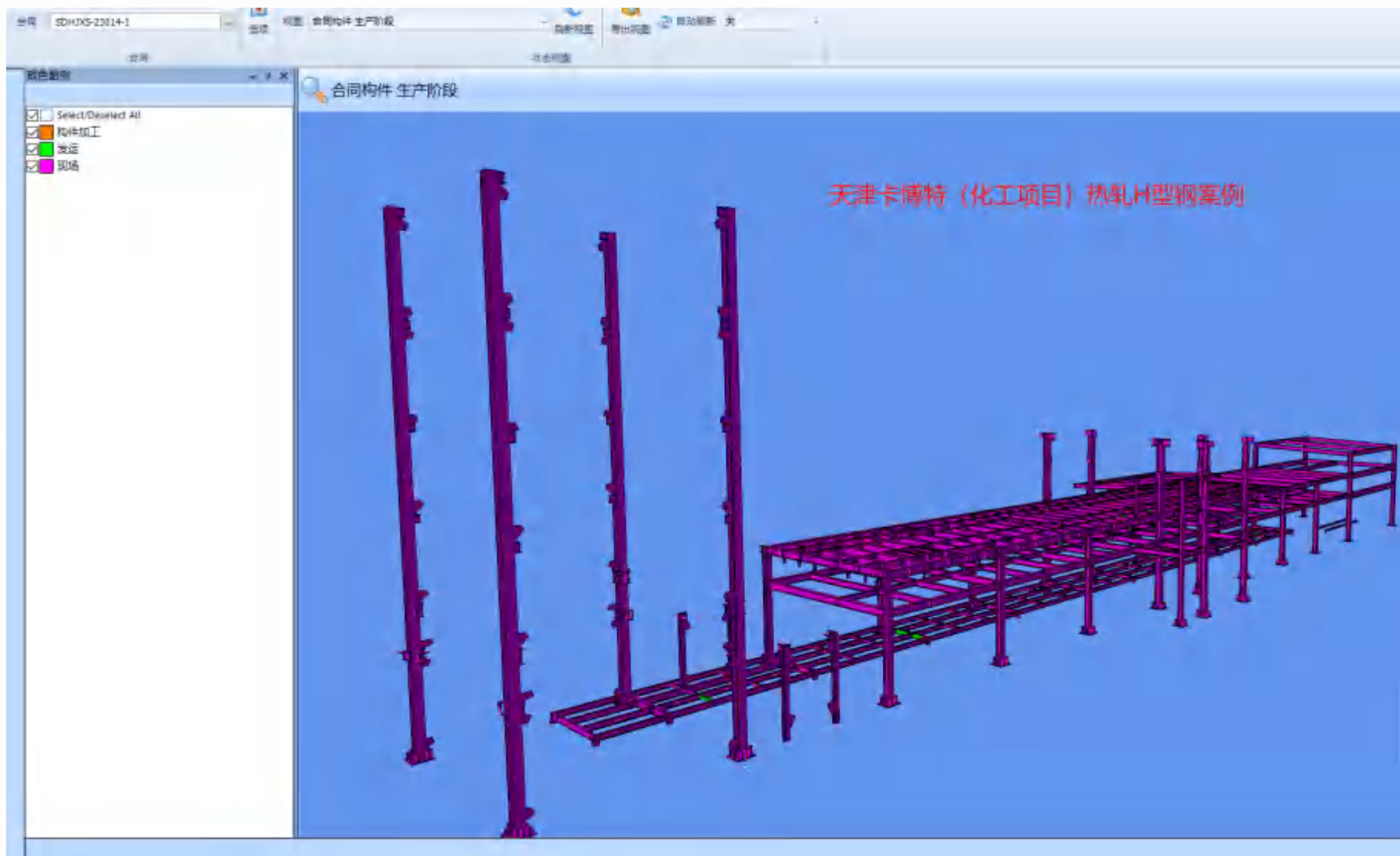


With Mega, Without Leak!

屋面不漏，沪江钢构®

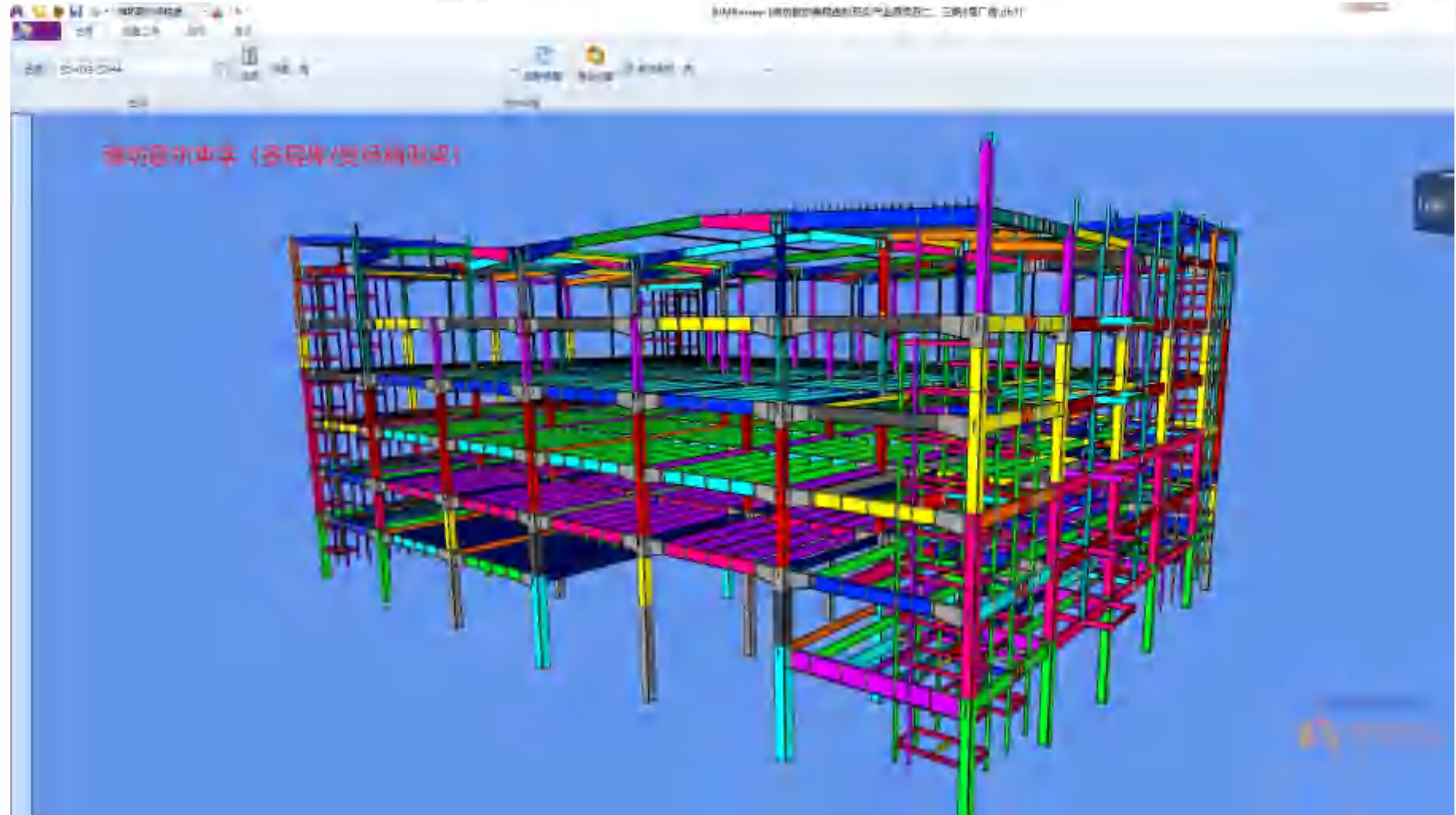
Description: Chemical Engineering Project located in Tianjin, Hot rolled H-Shaped steel

Total Tonnage: 435T



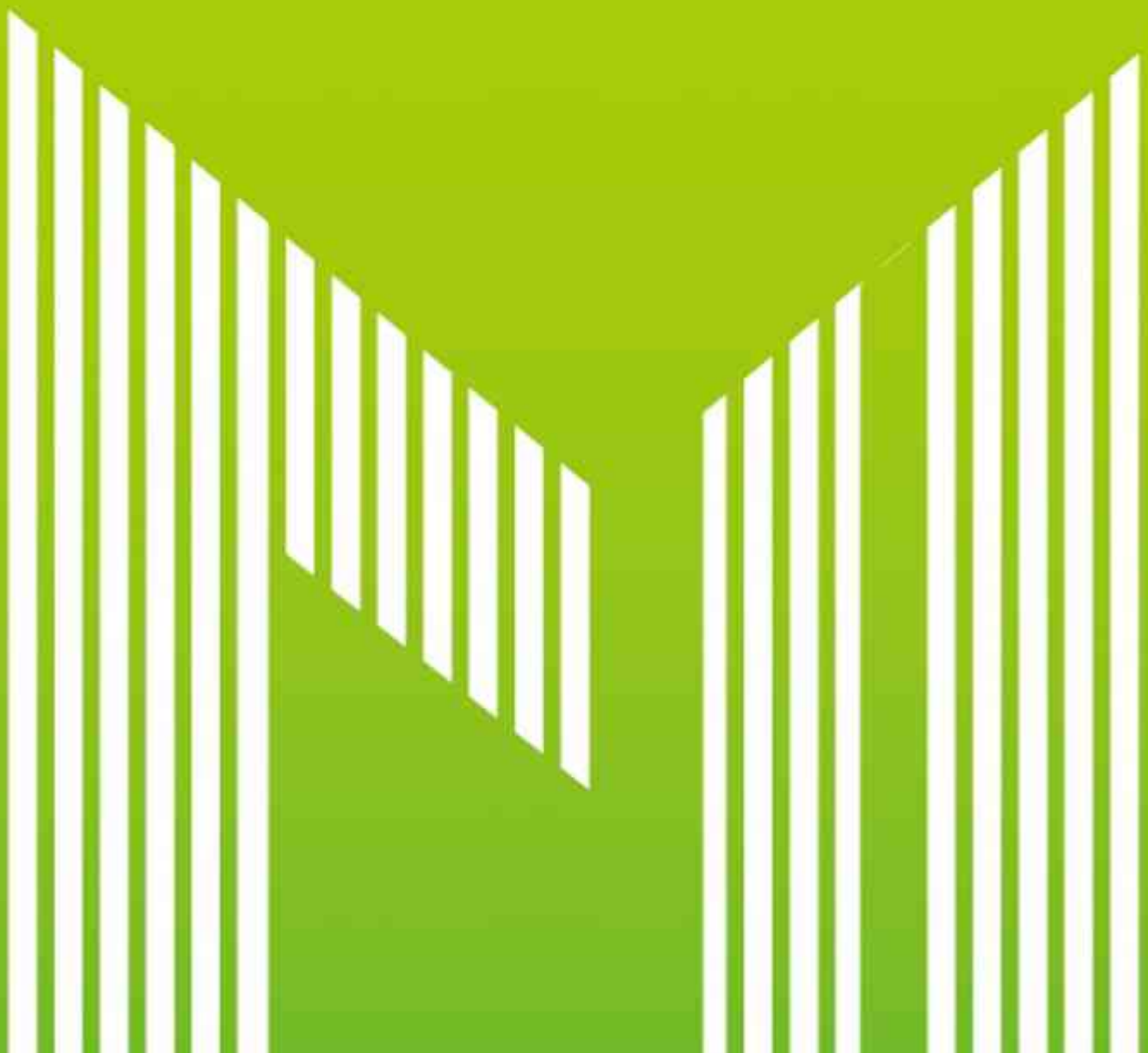
Description: Multi-level
warehouse located in
Weifang Shandong,
used variable section
box beam

Total Tonnage: 13768T



THANKS!

THANKS!



山东沪江智能装配有限公司/ Factory Overview

- 成立于2020年
- 占地243亩，车间面积11.6万平方米
- 年产量10万吨
- 认证体系涵盖: ISO9001, ISO14001, ISO45001, EN1090, ISO3834, AISC
- 主要产品与服务: 轻、重钢结构加工及出口
- Established: 2020
- Area: 162000m²
- Certifications: ISO9001, ISO14001, ISO45001, EN1090, ISO3834, AISC



2021年, 山东德州
2021, Dezhou, Shandong

产线与技术能力/ Production and Technical Capabilities

- 8条生产线
- 拥有等离子与激光切割、自动焊接、自动喷漆以及抛丸生产线
- 全流程ERP系统，实现生产进度与质量双重管控
- 技术团队专业，焊工持证率高，详图能力强
- 采用BIM技术进行详图深化与项目数字化协调
- Equipped with 8 production lines
- Equipped with plasma and laser cutting, automatic welding, automatic painting and sandblasting lines
- Intergraded ERP management system for tracking and quality control
- Skilled technical team with certified welders and professional drawing support
- BIM-based detailing and digital project coordination



德国卡巴赫三维数控钻床

自动油漆喷涂线/Automatic Paint Spraying Line

- 智能扫描系统，可在喷涂前精准识别构件形状与尺寸
- 配合高精度喷涂枪以及自动烘干装置，实现喷涂均匀，固化快速的效果
- 有效提升效率，降低人工强度，提高涂装质量
- 特别适用于多品种、大批量的钢结构加工
- Intelligent scanning system to accurately recognize the shape and size of components before spraying.
- Combined with high-precision spraying gun and automatic drying device, it realizes even spraying and fast curing effect.
- Effectively enhance efficiency, reduce labor intensity and improve coating quality.
- Particularly suitable for multi-species, high-volume steel structure processing.



德国卡巴赫自动喷涂烘干油漆线

VOCs 废气处理系统/VOCs exhaust gas treatment system

- 专业的废气处理设备，用于处理喷涂工艺中产生的有机废气
- 通过沸石转轮的浓缩技术，废气通过热氧化炉处理去除效率可达99%以上
- 高效净化，低能耗运行
- 可持续制造与环保责任的坚定承诺
- Specialized exhaust gas treatment equipment for the treatment of organic exhaust gases from the spraying process
- Concentration technology through the zeolite rotor, exhaust gas through the thermal oxidation furnace treatment removal efficiency of up to 99% or more
- Highly efficient purification with low energy consumption
- Strong commitment to sustainable manufacturing and environmental responsibility



华世洁沸石转轮和VOCs 废气处理设备

全自动多功能板夹中心/Fully automatic multifunctional plate clamping center

- 等离子切割、打码和钻孔于一体
- 全程采用CNC数控系统，实现高精度，质量稳定，加工高效的目标
- 智能上料与自动换刀系统提升了灵活性，显著降低人工干预
- 适用于复杂、大批量的钢板前道加工，是我们推进智能制造战略的重要装备之一
- Plasma cutting, marking and drilling in one unit.
- CNC control system is adopted throughout the whole process, realizing high precision, stable quality and high processing efficiency.
- Intelligent loading and automatic tool changer system enhances flexibility and significantly reduces manual intervention
- Suitable for complex, high-volume steel plate pre-processing, is one of the important equipment for our intelligent manufacturing strategy.



德国卡巴赫板夹中心

我们的优势/Why Choose Us

- 国际标准的的质量管理体系
- 强大的产能保障与准时交付能力
- 高效、精准、可扩展、适配复杂钢结构项目
- 丰富的出口经验，提供双语技术服务
- 致力于建立长期、共赢的合作关系
- International standard quality management system
- Strong production capacity and on-time delivery
- Efficient, precise and scalable for complex steel projects
- Rich export experiences with bilingual technical support
- Dedicated to long-term, win-win cooperation



2023年，山东德州
2023, Dezhou, Shandong