



东莞市勤金实业有限公司

Dongguan Kinggold Industry Co., Ltd

欢迎观看

Welcome to KGI

BUSINESS APPLICATIONS  
SOLUTIONS

**The development of KGI**

**The products of KGI**

**The concept of KGI**

**The structure of KGI**



## Company Profile

Dongguan Kinggold Industry Co.,Ltd is a production-oriented enterprise who is engaging in metal stamping and finished parts assembling, can offer whole solutions from products designing, toolings manufacturing, mass production, assembling, packaging and shipment. What's more, KGI can also offer sheet metal parts, zinc and aluminum alloy die casting parts, aluminum extrusion heatsinks, CNC machining parts, investment casting parts, sand casting parts, plastic parts, silicon and rubber parts, electronic accessories and so on. Now 90% of the business is from European and American markets, the factory usable area is 6000m<sup>2</sup> and the total numbers of employees is 80.



Outside View



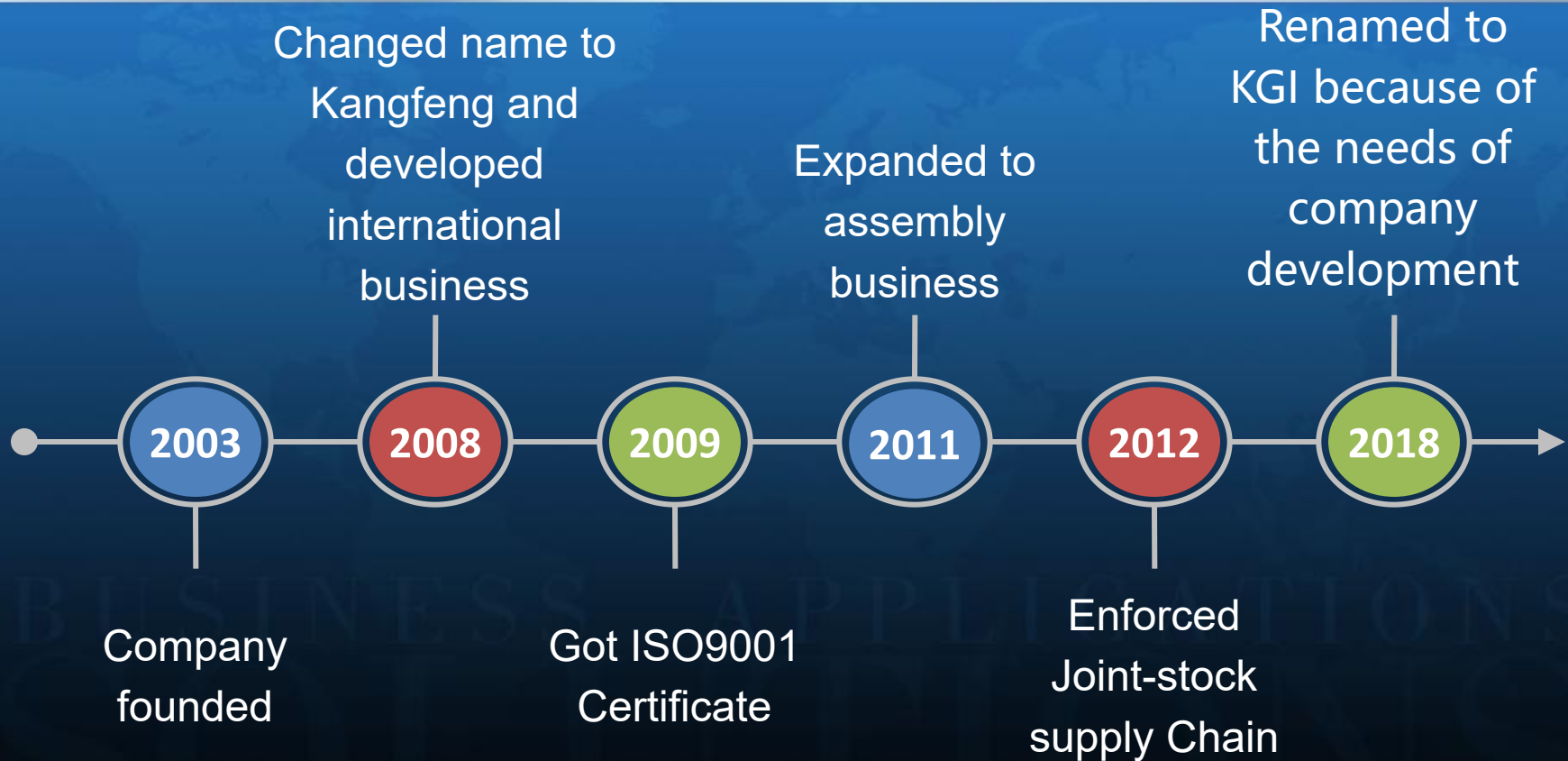
Stamping Workshop



Assembly Workshop



## The Development of KGI



## Main Body of Group

Kangfeng Group

## Core Industries

Kinggold Industry

Other Industries

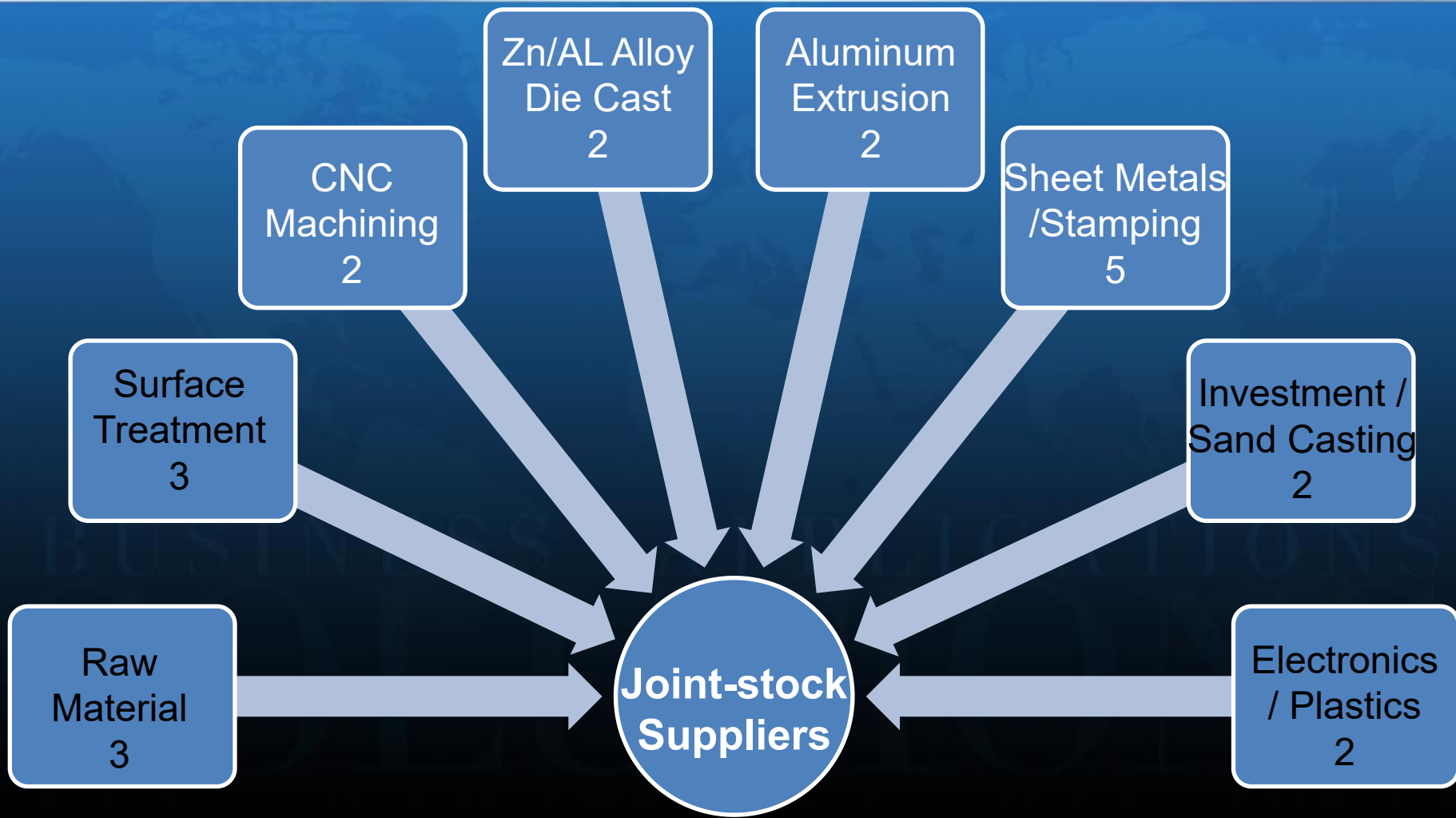
## Supply Chain Relationship

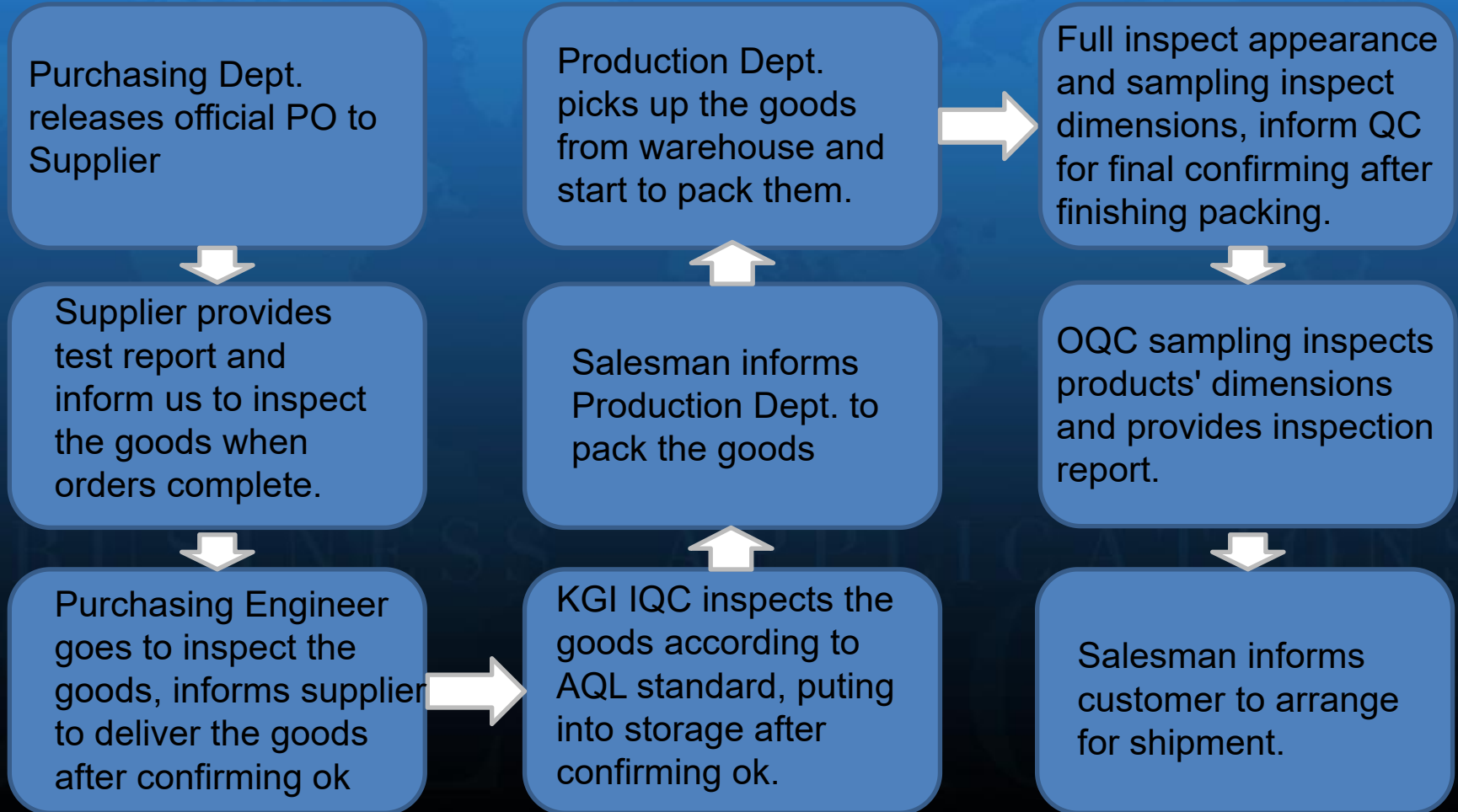
General Suppliers

Preferred Suppliers

**Joint-stock suppliers**

For those suppliers who have strong services and quality consciousness, we will try to focus on training and supporting them. When our orders amount reaches more than 30% of their turnover, we will take a stake in this company in form of cash and orders, so the supplier will give us much better quality services and preferred prices, we can also put higher requirements to them.







# Quality Inspection Equipment

## Image Inspection Instrument



## Film Thickness Tester



## Salt Spray Tester



## Hardness Tester



## Hight Gauge



## Force Gauge



## Soldering Tester



## Marble Platform



## Standard Light Box



## Colorimeter



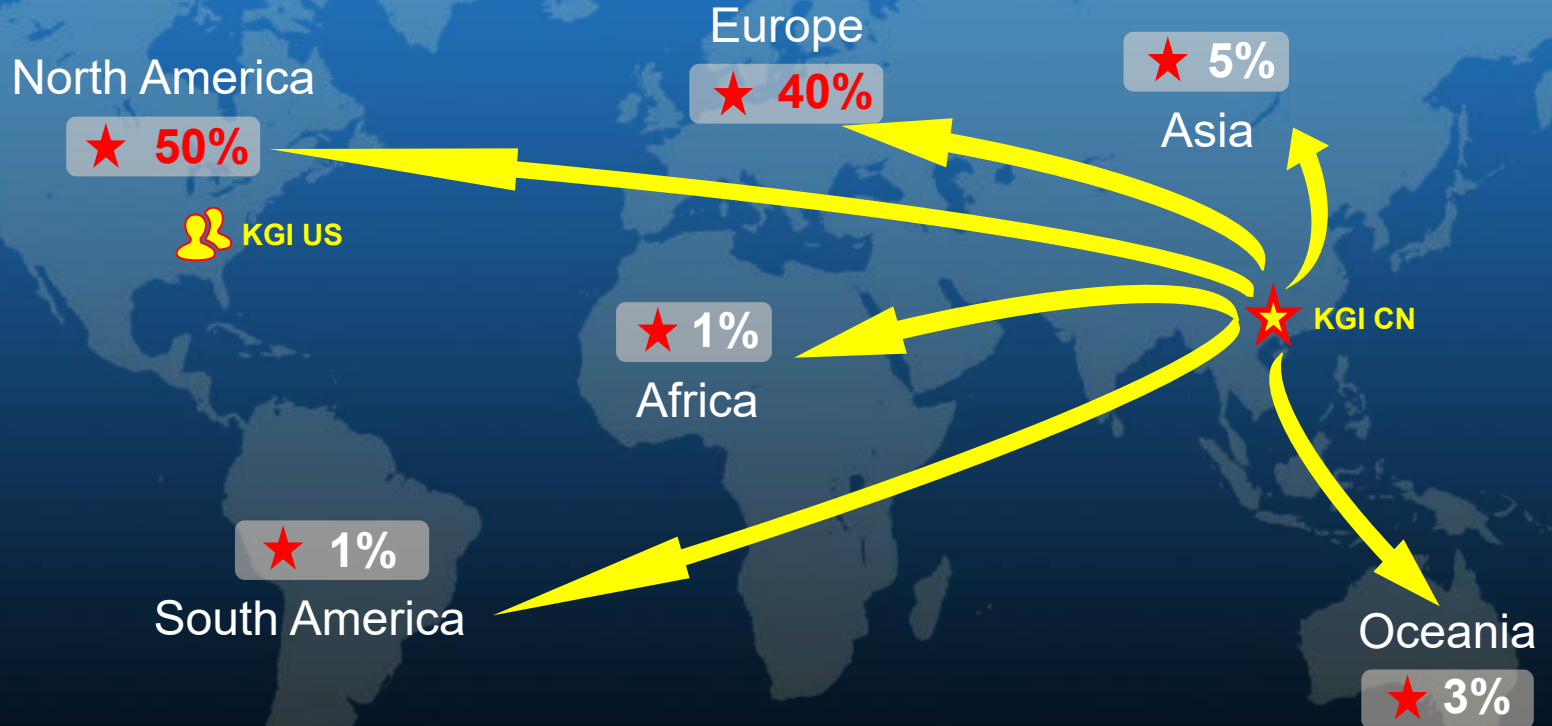
## In-process Inspection



## Full Inspection by (GO/NOGO) Gauge



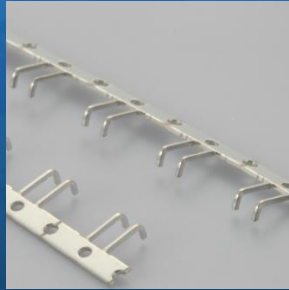
# KGI's Main Market and Market Shares



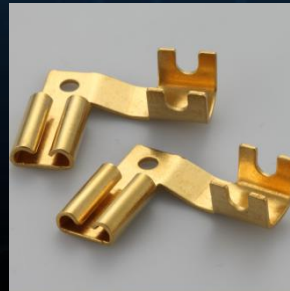
### Precise Stamping



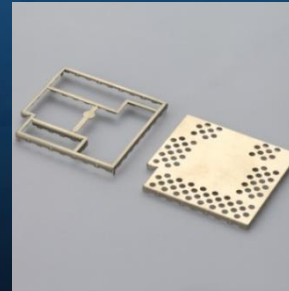
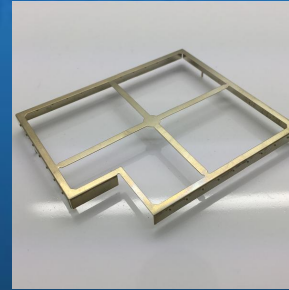
### Progressive Stamping



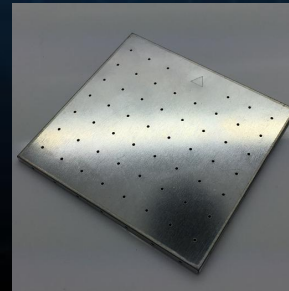
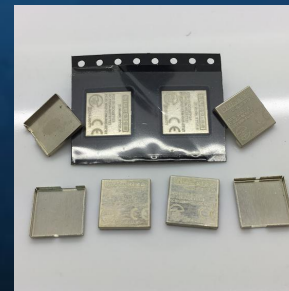
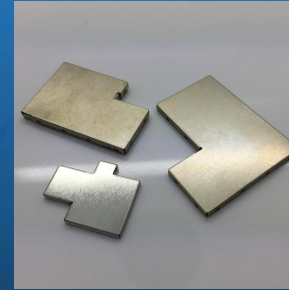
### Copper Stamping



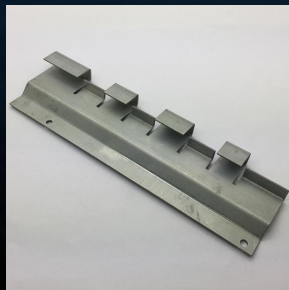
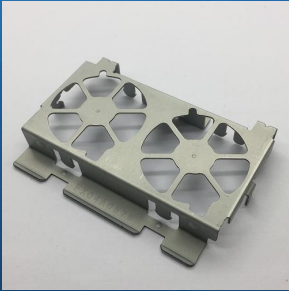
### RF/EMI Shielding



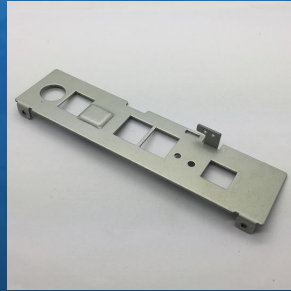
### RF/EMI Shielding



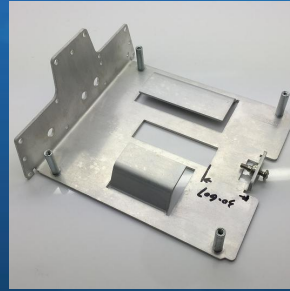
## Stamping Parts



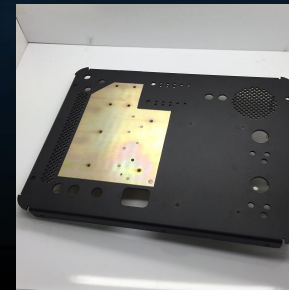
## Stamping Parts



## Stamping Parts



## Big Stamping Parts



## Deep Drawn Parts



## Sheet Metals



## Sheet metal Chassis



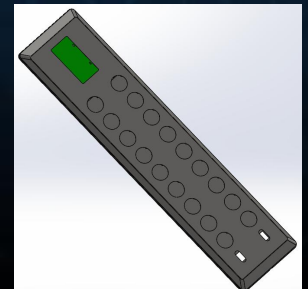
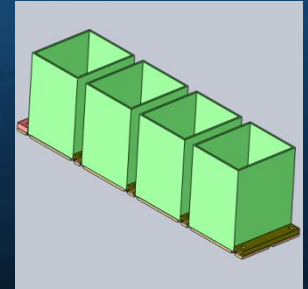
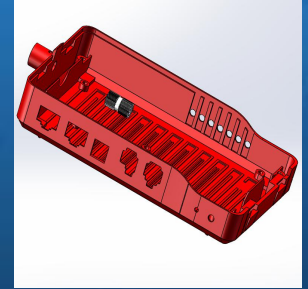
## Assembled Parts



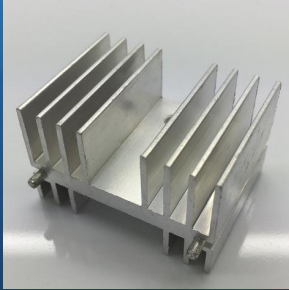
## OEM Parts



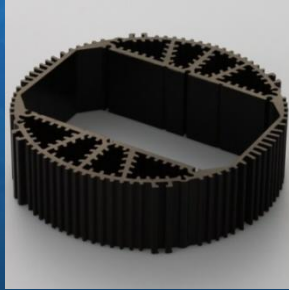
## R&D



Aluminum  
Heat Sink



Aluminum  
Heat Sink



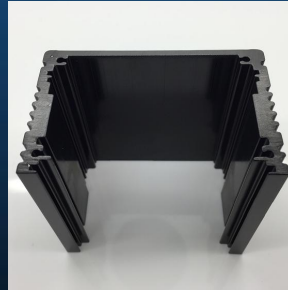
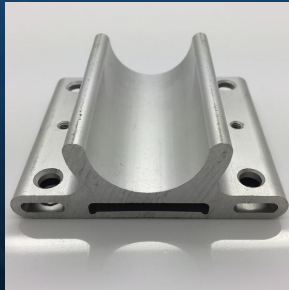
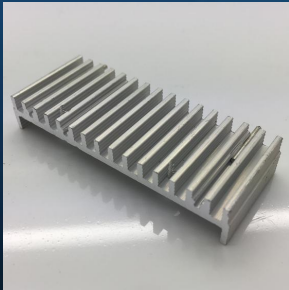
Aluminum  
Extruded Shell



Aluminum  
Casting parts



Zinc  
casting parts



## CNC Machining Parts



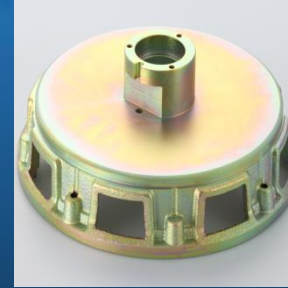
## CNC Lathe Parts



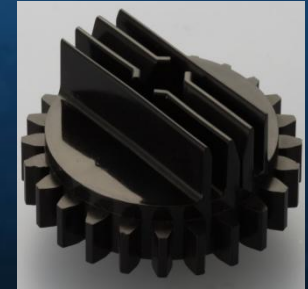
## Investment Casting Parts



## Sandcasting Parts



## Plastic Parts



The primary service concept of KGI: rapid response, timely reply!

Emails: replying within 24 working hours.

Customer Complaints: arrange internal meeting the first time to investigate related issues when receiving customer's complaint no matter it is related to the product or services, and then provide solution to the customer within 48 hours.

In order to give customers the best services, Kinggold has equipped with a strong team.



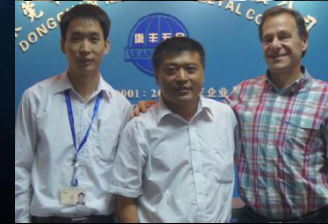
# The Structure of KGI

Mr King Xu, born in 1975, the founder and CEO of Kangfeng Group, the former head of Dongguan network businessmen consortium Guanbei District. He has been engaging in metal industry for more than 20 years, from the earliest mould industry to metal stamping industry. He not only has a very rich work experience for metal stamping and mould manufacturing, but also has his original views for company management and customer service.



**CEO**

## Sales Dept.





# The Structure of KGI



**General Affairs Dept.**



**Financial Dept.**



**Purchasing Dept.**



**Production Dept.**



**Quality Dept.**



**Engineering Dept.**

## Group Travelling to Zhuhai



## The travelling in Yunnan



## The monthly Training for all



## The Badminton Game



## Birthday Party for Staff



# Dongguan Kinggold Industry Co.,Ltd

Adds: Panling Industrial Zone, Taihe Road, Shipai Town,  
Dongguan City, Guangdong China(523332)

Tel: +86 769 8170 7676 / 81819256

Fax: +86 769 8181 9252

Email: LEL@kgicn.com

Website: [www.kgicn.com](http://www.kgicn.com) / [www.dgkinggold.com](http://www.dgkinggold.com)

**谢谢观赏 THANKS!**

BUSINESS APPLICATIONS  
SOLUTIONS