



SERVICE FIRST . QUALITY BASED



PRODUCT PRESENTATION

CHINA TRUST-WORTHY DIGITAL SIGNAGE SUPPLIER

BELOONG

SHENZHEN BELOONG OPTO-ELECTRONIC TECHNOLOGY CO., LTD



COMPANY PROFILE



Shenzhen Beloong Opto- Electronic Technology Co., Ltd. is a professional manufacturer of display equipment. Mainly engaged in the production of LCD video wall, advertising players, interactive whiteboard, touch inquiry kiosk and other products.

The company has a mature management system, perfect marketing services, and fast aftersales service system. The products have been used in various fields such as safe cities, venues, transportation, energy, finance, entertainment medical care, education, and command centers, and have won highly praise from customers.

The company has gathered a group of technical talents with profession as the core, and wholeheartedly provides customers with cost-effective products, high-quality engineering design and transformation and meticulous after-sales service.

Based on the customer-centered service tenet, Beloong continuously improves product quality, service quality and cost-effectiveness and is determined to become your trusted partner and make unremitting efforts to jointly build a safe, harmonious and relaxed high-quality life!

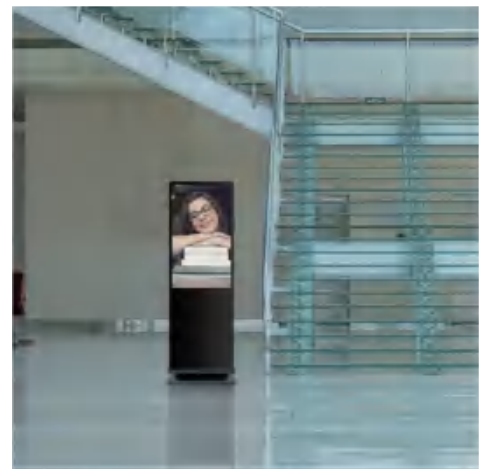
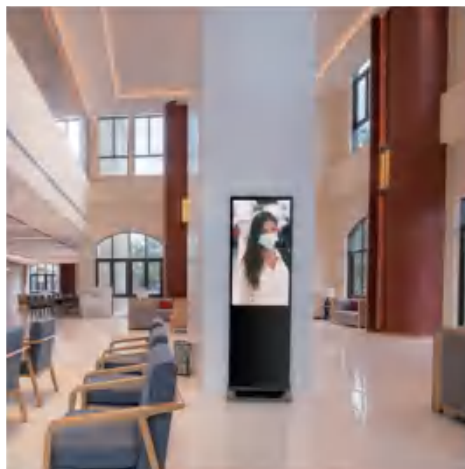


LCD ADVERTISING PLAYER INDOOR

- ▶ Support ODM/OEM, customized LOGO freely
- ▶ Free CMS to publish the information for lifetime
- ▶ 4K resolution, high definition
- ▶ Support the split screens
- ▶ 7*24 hours loop play



APPLICATION



PRODUCT PARAMETER

Parameter	Display Resolution	1920*1080/3840*2160
	Contrast	1400:1typ
	Brightness	300-700cd/m ²
	Image Ratio	9:16
	Visual Angle	178°
	Color	16.7M
	Input Voltage	AC110-240V 50HZ-60HZ
Touch Screen	Touch Type	Infrared touch/ Capacitive touch/ Non-touch
	Touch Screen Sensing	Finger
	Calibration	No calibration
	Number of Touches	More than 60 million times in the same location
	Responding Speed	Click 8ms Continuous: 3ms
Play System	System	Android / Windows
	Play Mode	Support multiple playback modes such as looping, timing, interstitial, etc.
	Decoding Resolution	Support up to 3840*2160
	Split Screen Playback	Support horizontal screen, vertical screen, full screen and split screen playback
	Time Switch Play	5 switches per day, seven days a week can be set up, 24 hours unmanned management
	Audio Sound	Left channel right channel, 8Ω 5W *2 speaker
	Support Subtitles	You can set mobile subtitles, and play subtitles in commercials
	Image Format	Support JPG, BMP, PNG, GIF and other image format
	Play File Format	Video: All video formats Music: MP3

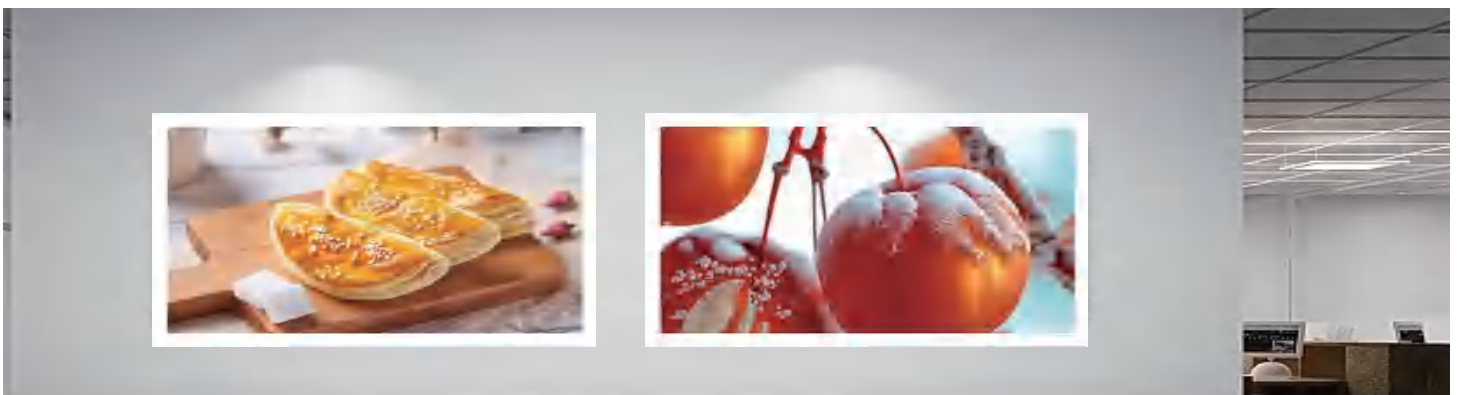


WALL MOUNTED ADVERTISING MACHINE

- ▶ Free CMS for lifetime
- ▶ Long service life
- ▶ Split screens function available
- ▶ Various display materials possible



APPLICATION

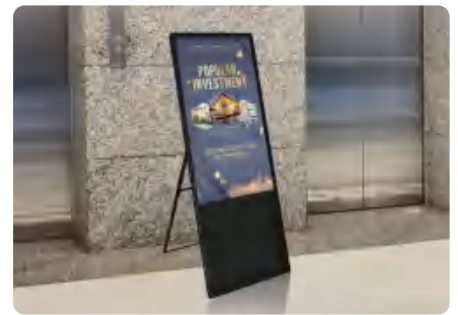
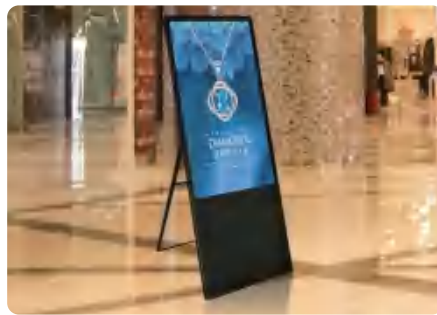
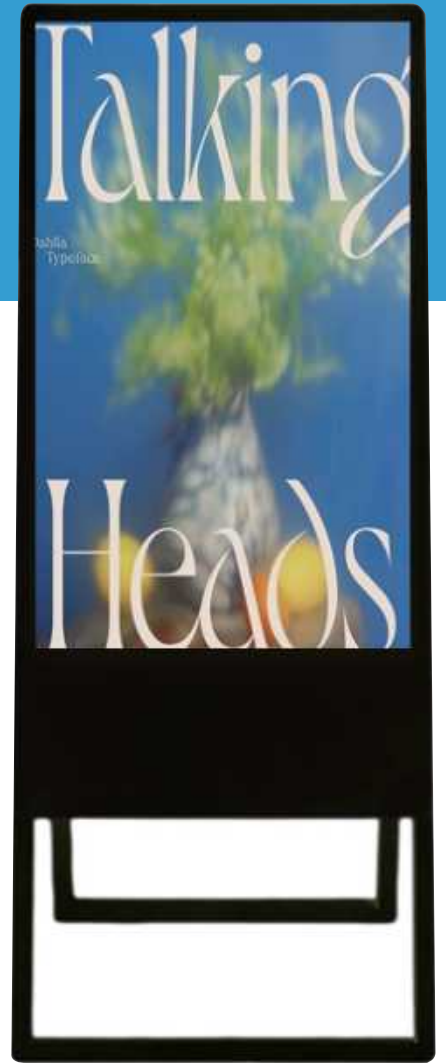
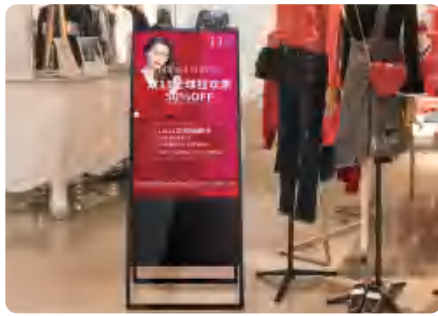


PRODUCT PARAMETER

Screen Size	10.1"	13.3"	15.6"	18.5"	
	21.5"	23.6"	23.8"	27"	32"
Display Resolution	1920*1080				
Screen Size	43"	49"	55"	65"	75"
	85"	86"	98"	100"	110"
Display Resolution	1920*1080, 3840*2160				
Contrast	1400:1typ				
Brightness	300-700cd/m ²				
Image ratio	16:9 (9:16)				
Perspective	178°				
Color	16.7M				
Input Voltage	AC110-240V (50Hz-60Hz)				
Touch Type	Non-touch		Infrared touch		
	Capacitive touch				
System	Andriod / Windows / OPS				



PORTABLE ADVERTISING DISPLAY



PRODUCT PARAMETER

Size		32" 43" 49" 55" 65"
Parameter	Display Resolution	1920*1080/3840*2160
	Contrast	1400:1typ
	Brightness	300-700cd/m ²
	Image Ratio	9:16
	Visual Angle	178°
	Color	16.7M
	Input Voltage	AC110-240V 50HZ-60HZ
Touch Screen	Touch Type	Infrared touch/ Capacitive touch/ Non-touch
	Touch Screen Sensing	Finger
	Calibration	No calibration
	Number of Touches	More than 60 million times in the same location
	Responding Speed	Click 8ms Continuous: 3ms
Play System	System	Android / Windows
	Play Mode	Support multiple playback modes such as looping, timing, interstitial, etc.
	Decoding Resolution	Support up to 3840*2160
	Split Screen Playback	Support horizontal screen, vertical screen, full screen and split screen playback
	Time Switch Play	5 switches per day, seven days a week can be set up, 24 hours unmanned management
	Audio Sound	Left channel right channel, 8Ω 5W *2 speaker
	Support Subtitles	You can set mobile subtitles, and play subtitles in commercials
	Image Format	Support JPG, BMP, PNG, GIF and other image format
	Play File Format	Video: All video formats Music: MP3



ELEVATOR ADVERTISING MACHINE

- ▶ Free CMS for lifetime
- ▶ Horizontal or vertical type
- ▶ Single or dual screens optional
- ▶ Support the customized LOGO



APPLICATION



INTERACTIVE WHITEBOARD

- ▶ 4K resolution
- ▶ Android 12.0 and Windows 11 dual systems
- ▶ Wireless projection
- ▶ Built the camera for conference
- ▶ 20 points multi-touch



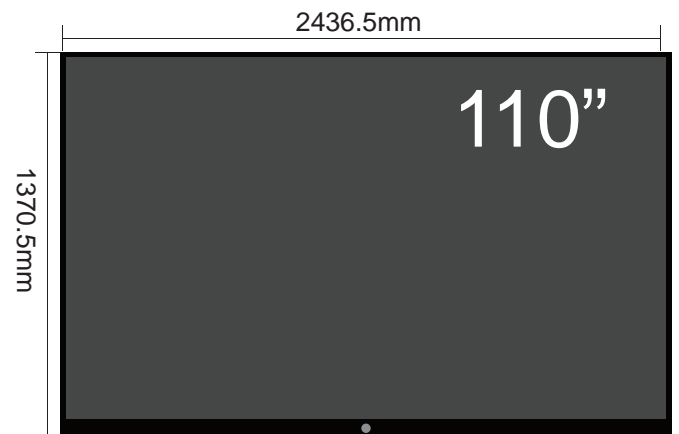
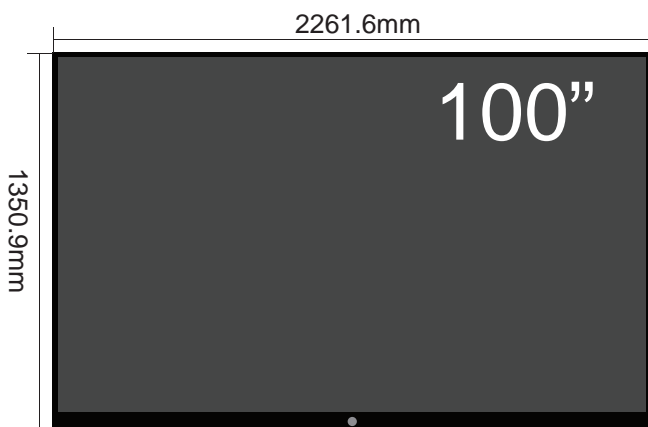
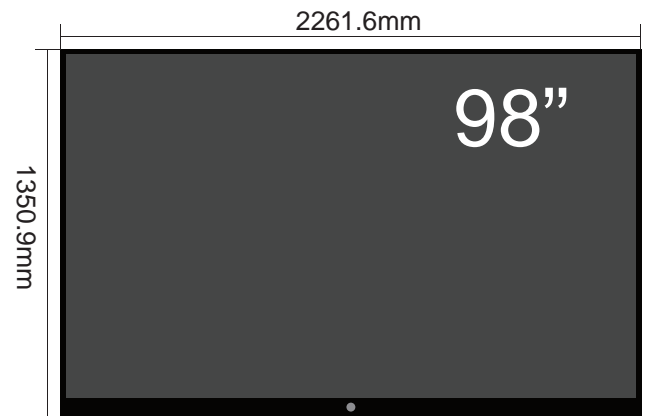
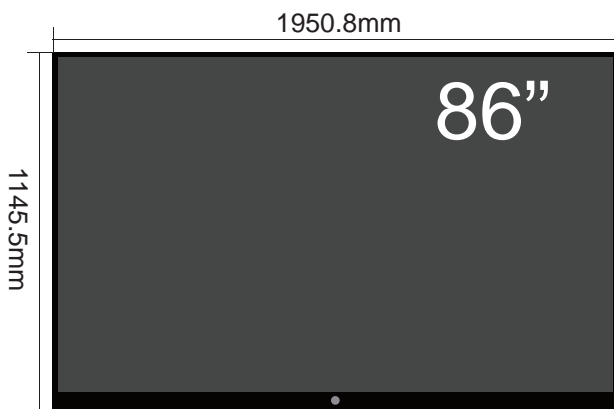
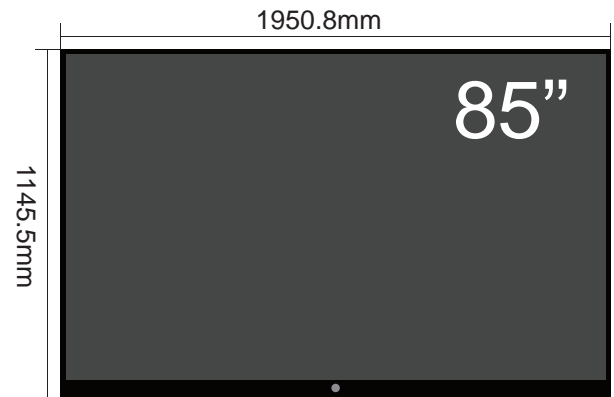
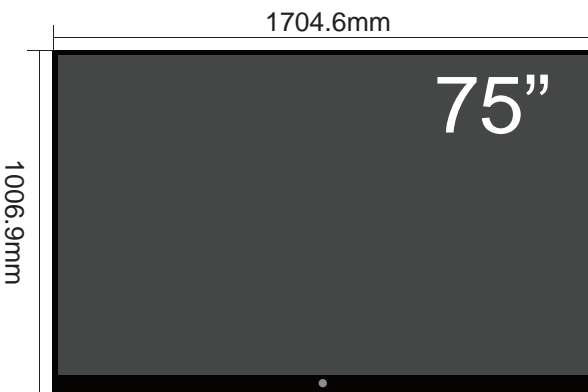
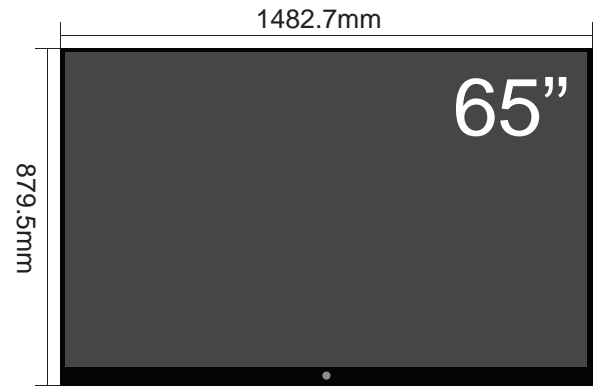
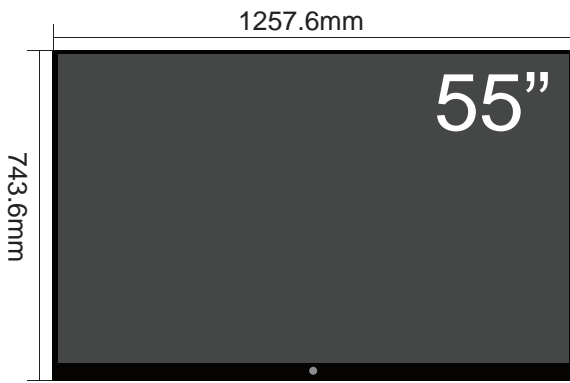
APPLICATION





PRODUCT PARAMETER

Display	Backlight Type	OLED direct type
	Screen Ratio	16:9
	Physical Resolution	3840x 2160 UHD
	Brightness	350-380cd/ m ² (center point)
	Contrast	1200:1 (Typ.) transmission
	Display Color	8 bit/16.7 Million
	Viewing Angle	178°,178°
	Refresh Rate	60Hz
	Corresponding Time	8ms
	Audio Output Power	8Ω10W x2
	Camera	OPTIONAL
	Touch Type	Infrared touch screen
	Touch Points	20 touch points
Touch	Touch Writing Surface Material	4mm tempered glass
	Touch Screen Sensing Method	Fingers or other non-transparent touch-sensitive media
	Detection Function And Calibration	With software automatic detection function
Specifications And Parameters	Installation Method	Wall-mounted or Mobile Stand optional
	Front Interface	Front terminal: USB port: 2 groups (shared by dual systems), HDMI input port: 1 group, Touch (external computer) port: 1 group
	Storage Environment	Storage temperature: -20℃~60℃; storage humidity: 10%RH~90%RH
	Working Environment	Working temperature: -10℃~55℃; Working humidity: 10%RH~90%RH
	Service Life	≥ 50000 hours

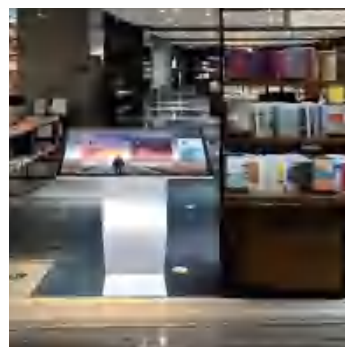




TOUCH QUERY ALL IN ONE MACHINE



- ▶ Customized shapes/colors/bases
- ▶ Rich interfaces, accurate IR/PCAP touch
- ▶ 178° wide viewing angle IPS display
- ▶ Android / Windows system optional
- ▶ 20 points multi-touch



PRODUCT PARAMETER

Display	Display resolution	1920*1080/3840*2160	
	Contrast	4000:1typ	
	Maximum brightness	350cd/m	
	Image ratio	16:9	
	Perspective	178°	
	Color	16.7M	
	Input voltage	AC110-240V (50Hz-60Hz)	
Screen	Touch type	Infrared/Capacitive touch	
	Number of touches	More than 60 million times in the same location	
	Responding speed	Click: 8ms Continuous: 3ms	
Specification	Motherboard	X86 motherboard	
	RAM	4G	
	ROM	128G	
	System	Windows system	
	Audio	Onboard RTL ALC269 HD sound card	
		Audio input; MIC input	
		2.0 4Pin speaker output 2W*2	
	Display interface	HDMI 1 Type-A female connector 3840*2160@60Hz	
		VGA 1 standard VGA female connector 3840*2160@60Hz	
	Network port	1 standard RJ45 interface 10M/100M/1000M adaptive	
		Onboard RTL8111F Gigabit LAN	
System functions	Support diskless startup, network wake-up, power on, watchdog and other functions		
Language	Simplified Chinese, Traditional Chinese, Japanese, European OSD languages etc.		
Video	Switch machine	Manual switch machine, automatic timing switch machine.	
	Maximum resolution	3840*2160@60Hz	
	The largest color depth	24bit	
	The biggest frame rate	30frm	
	The largest stream	USB2.0 device:20Mbit/sec	

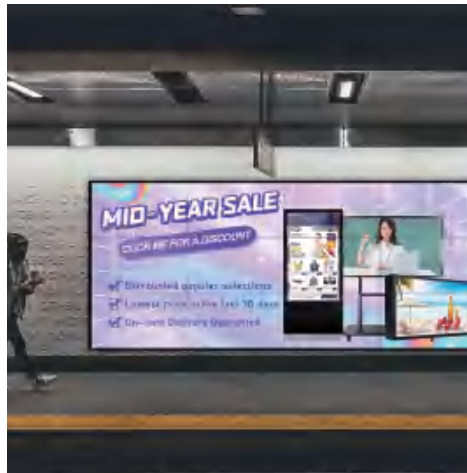


LCD VIDEO WALL



- ▶ BOE/LG/Innolux original A+ panel
- ▶ Customized LOGO freely
- ▶ FREE technical guidance and solutions for LIFETIME

APPLICATION



PRODUCT PARAMETER

Description	46"			49"	55"			65"
Bezel	3.5mm	1.7mm	0.88mm	3.5mm	3.5mm	0.88mm	1.7mm	3.5mm
Size of screen	1022x576.6mm	1020x574.6mm	1019x573.6mm	1077.6x607.8mm	1213.7x684.5mm	1211.5x682.3mm	1210.51x681.22mm	1432.5*807.6mm
Resolution	1920*1080							
Frequency	60Hz							
Contrast ratio	4000:1	4000:1	4000:1	4000:1	3000:1	3000:1	3000:1	3000:1
Color saturation	97%							
Brightness	500cd/m2							
Display color	16.7M							
Viewing angle	178°							
Port	AV , VGA, DVI, HDMI, BNC							
Working temperature	0℃ -50℃							
Working humidity	20%-80%							
Power	AC100-240V, 50/60HZ							
Shelf life	≥60000H							
Control signal type	RS232							
Start time	≤8ms							
Response time	2ms							
Image ratio	16:9							
Cover material	Full metal shell, anti-static, anti-magnetic field, anti-interference from strong electricity							
Backlight	Straight down LED							
Installation	Cabinet, Wall-mounted, Movable type, Hydraulic front maintenance, etc							



INSTALLATION METHOD



Hydraulic front maintenance

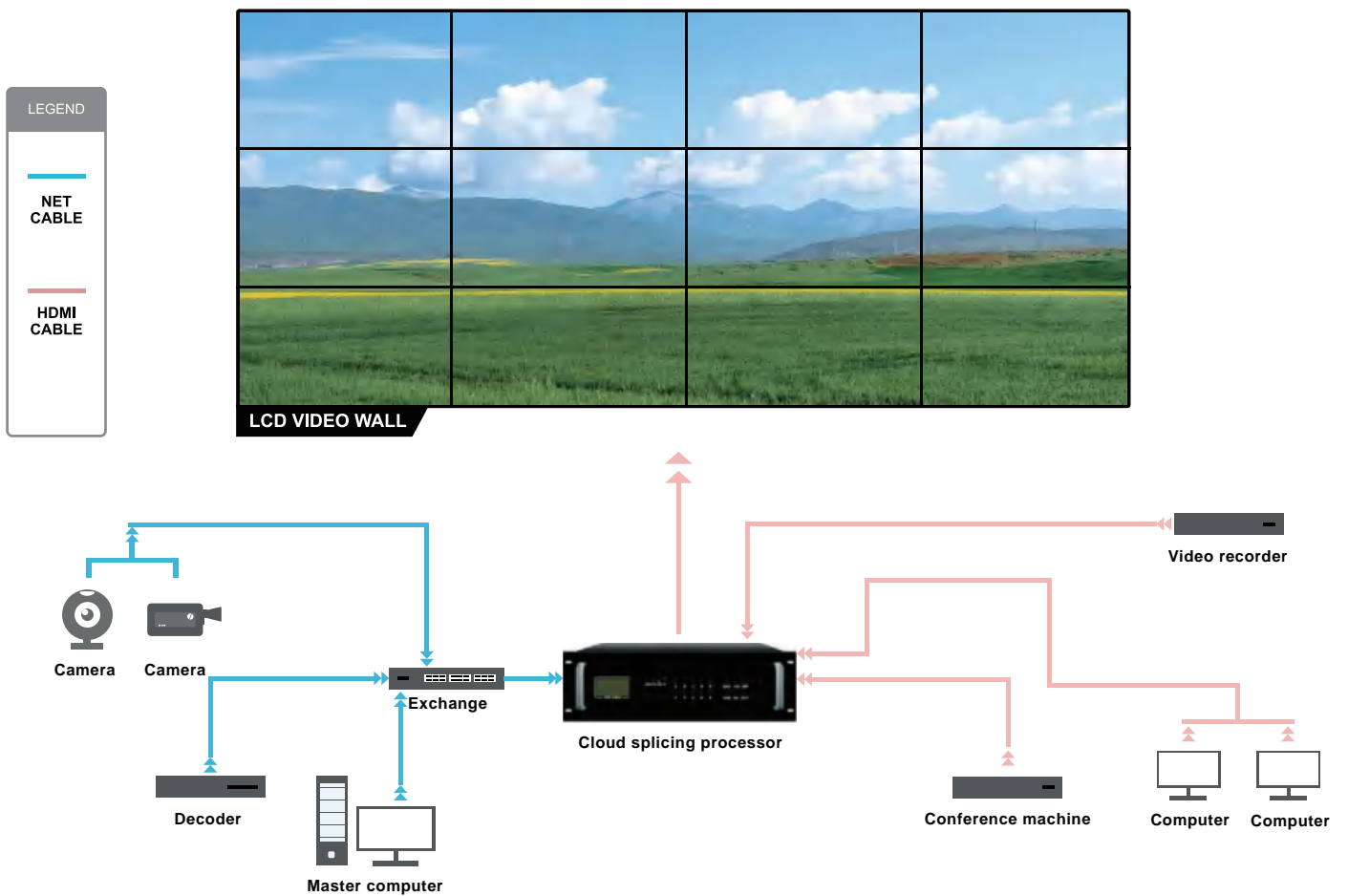


Cabinet mounted



Moveable bracket

TOPOLOGY CHART

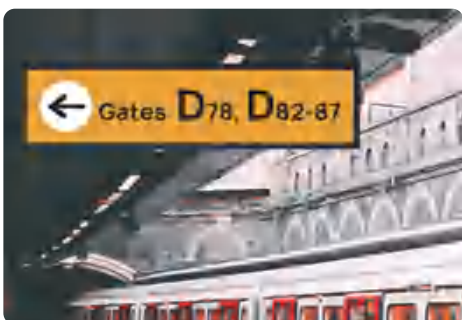
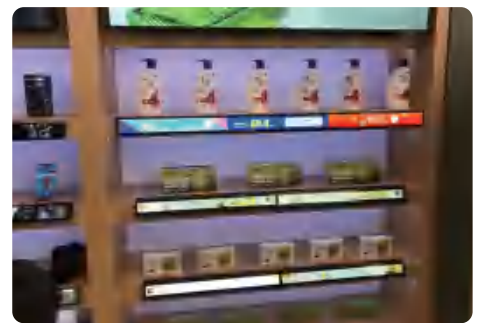
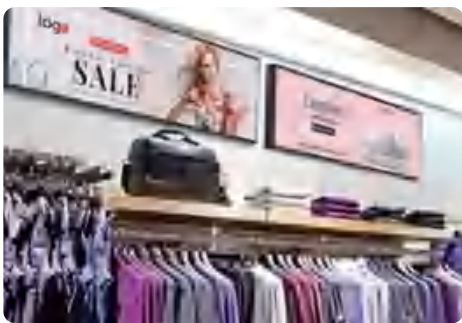




LCD STRETCHED BAR SCREEN



APPLICATION

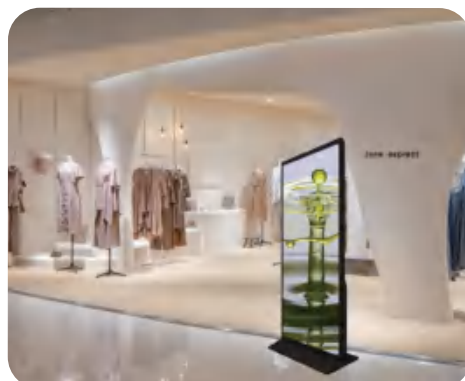
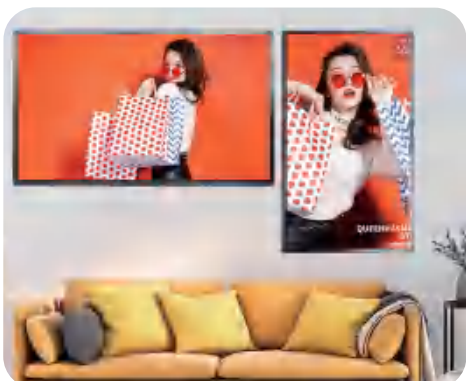




FULL SCREEN ADVERTISING MACHINE



APPLICATION



DOUBLE-SIDED HANGING ADVERTISING DISPLAY

- ▶ Vertical/ Horizontal display mode
- ▶ Crystal glass frame
- ▶ Top hanging installation mode
- ▶ Smart split screen and console box
- ▶ Android system with free CMS



APPLICATION

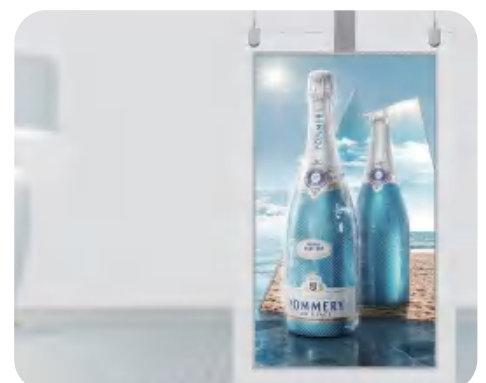
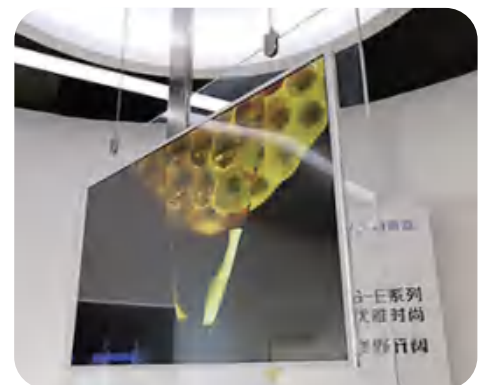


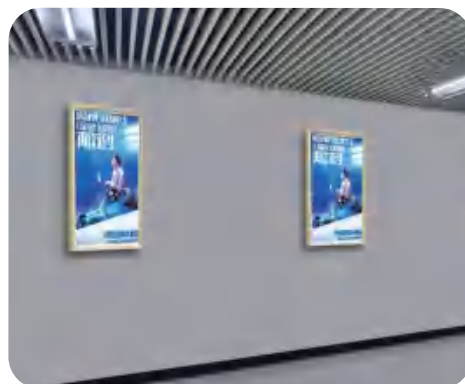
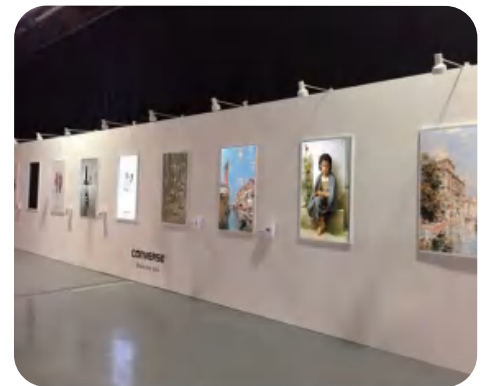
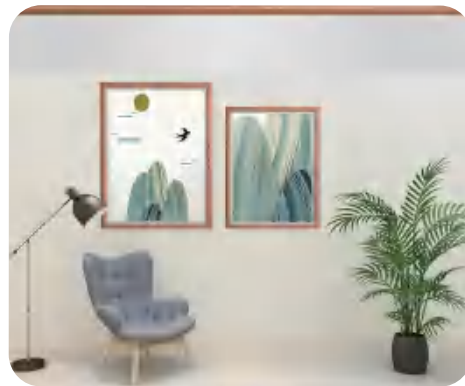
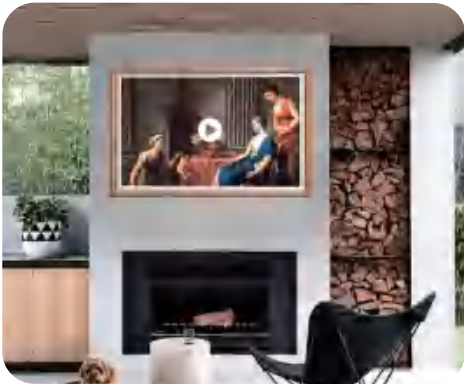


PHOTO FRAME ADVERTISING DISPLAY



- ▶ High definition display
- ▶ Anti-glare screen
- ▶ Different colors available
- ▶ Fashionable appearance
- ▶ Applicable to exhibition halls, galleries and other places

APPLICATION

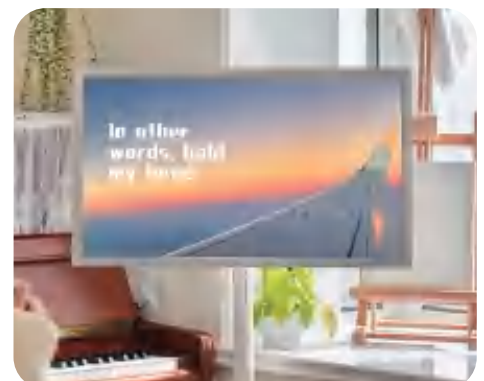
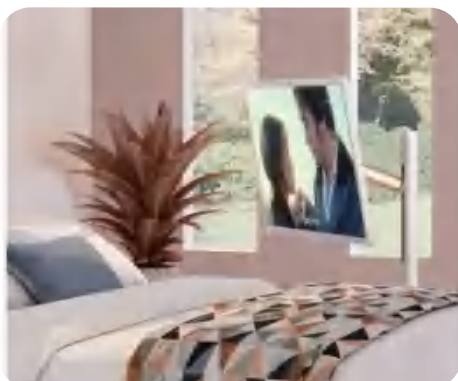
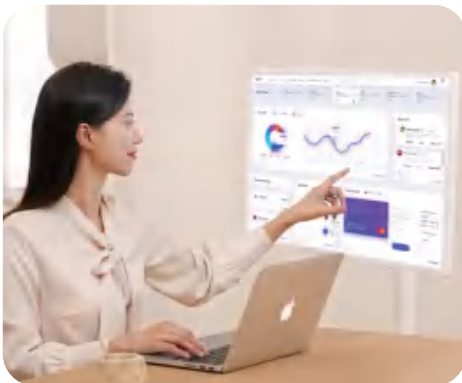


SMART MOVEABLE TOUCH SCREEN DISPLAY



- ▶ 360° rotation
- ▶ Equipped with wheels for easy movement
- ▶ Anti-glare screen, effective eye protection
- ▶ Built-in lithium battery for longer battery life
- ▶ Compatible with multiple Apps

APPLICATION



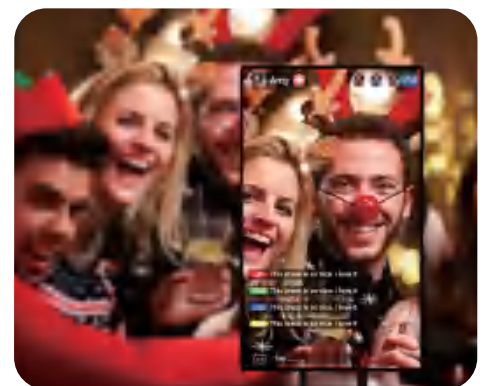
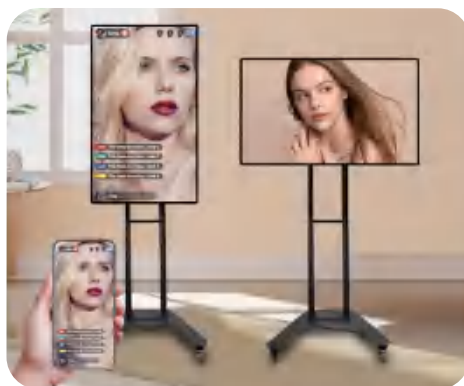
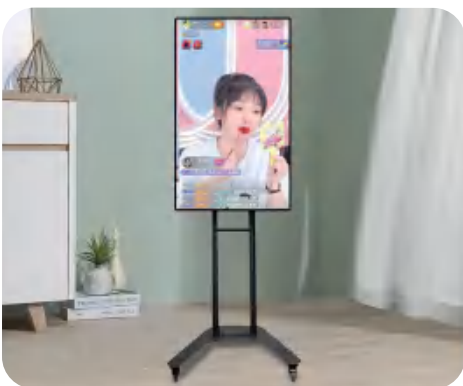
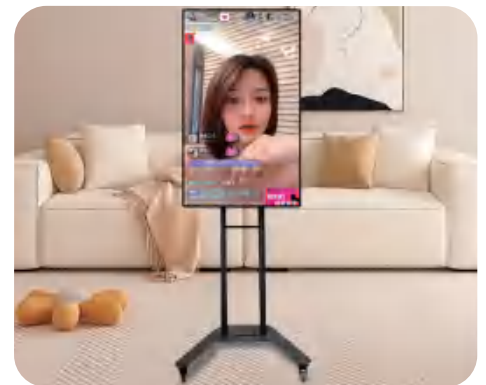
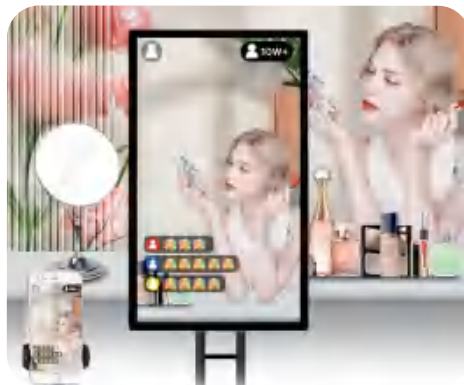


SMART LIVE STREAMING SCREEN



- ▶ Smart live screen
- ▶ Supports Tik Tok, Facebook and other mainstream apps to start live broadcast with one click
- ▶ Supports mobile screen projection and touch screen control for Android phones

APPLICATION

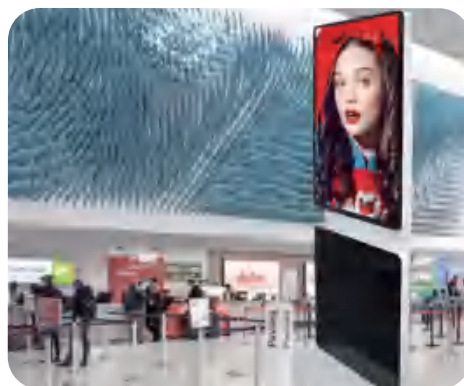
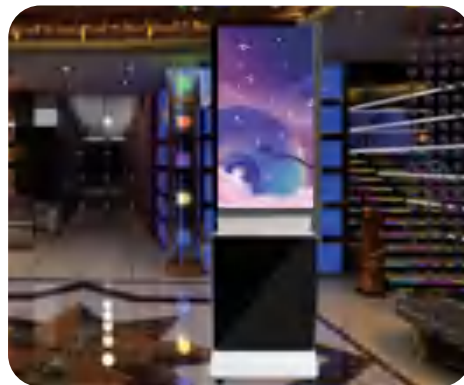


FLOOR STANDING ROTATING ADVERTISING DISPLAY

- ▶ Split-screen display
- ▶ Remote program release
- ▶ Gravity sensitive module
- ▶ Horizontal and vertical screen switching
- ▶ Support Android/ Windows OS



APPLICATION



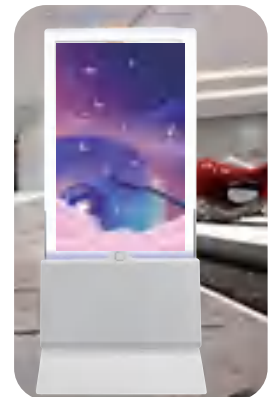
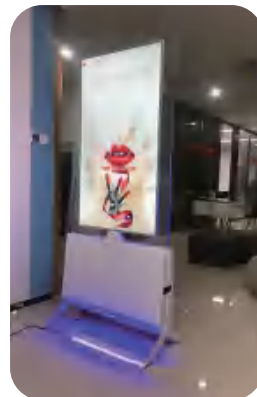
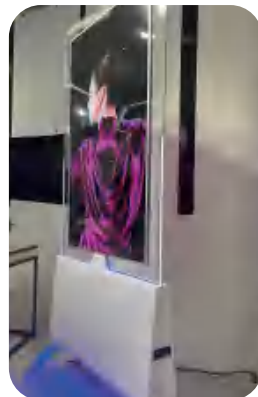
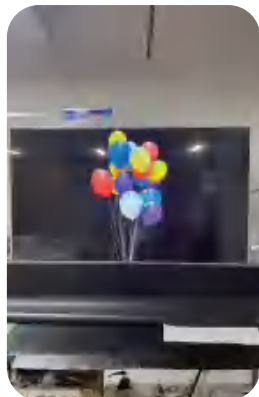
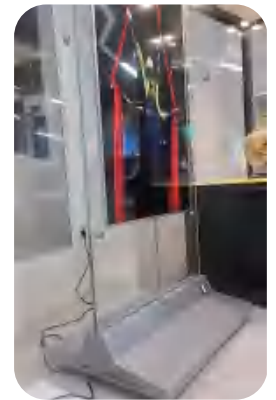
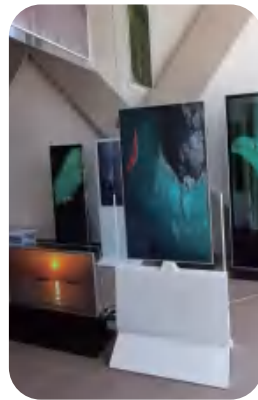
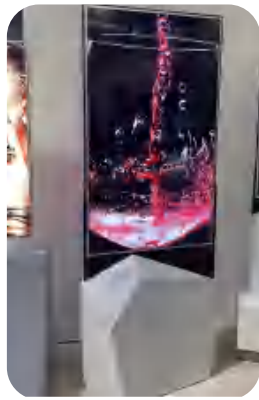
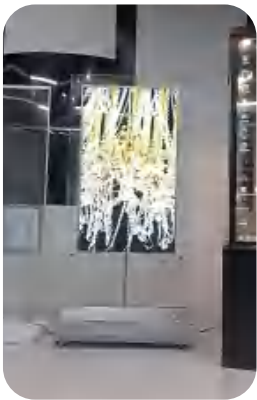


DOUBLE SIDED ULTRA-THIN DIGITAL KIOSK

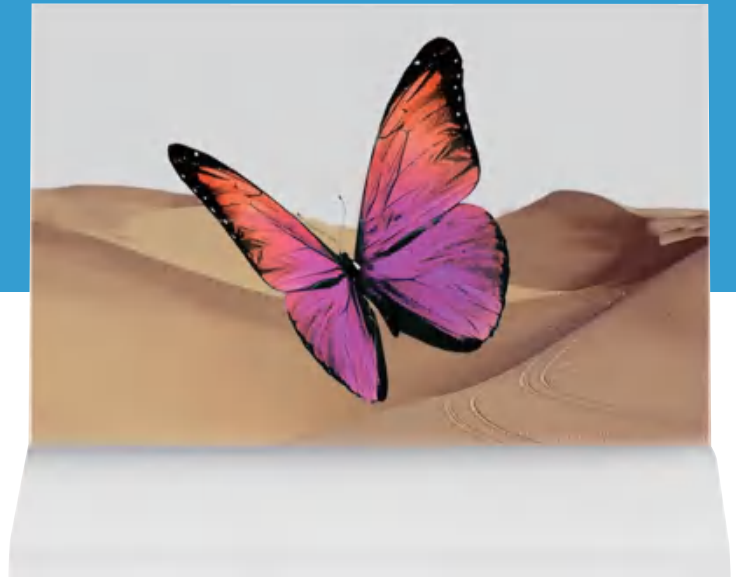
- ▶ Screen ultra-thin thickness 20mm
- ▶ Base style can be customized
- ▶ Double sided display
- ▶ The double-sided display can be same or different contents



APPLICATION

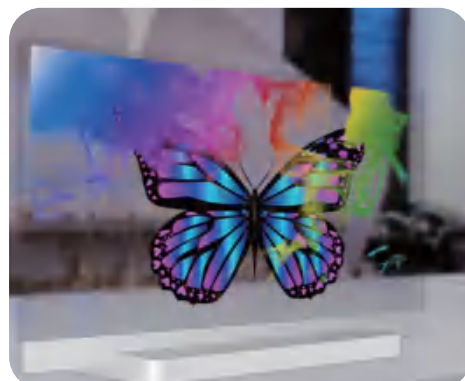
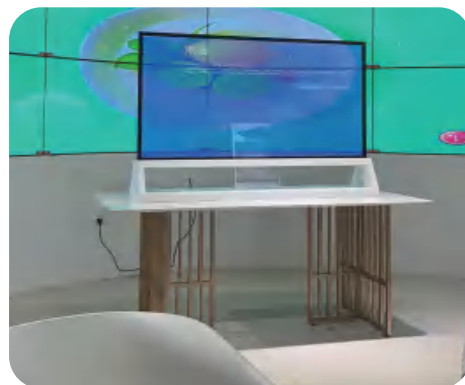


OLED SCREEN DIGITAL SIGNAGE



- ▶ OLED transparent screen
- ▶ Crystal glass laminated panel
- ▶ Screen ultra-thin thickness 8mm
- ▶ Triangular base style
- ▶ Customizable capacitive touch function

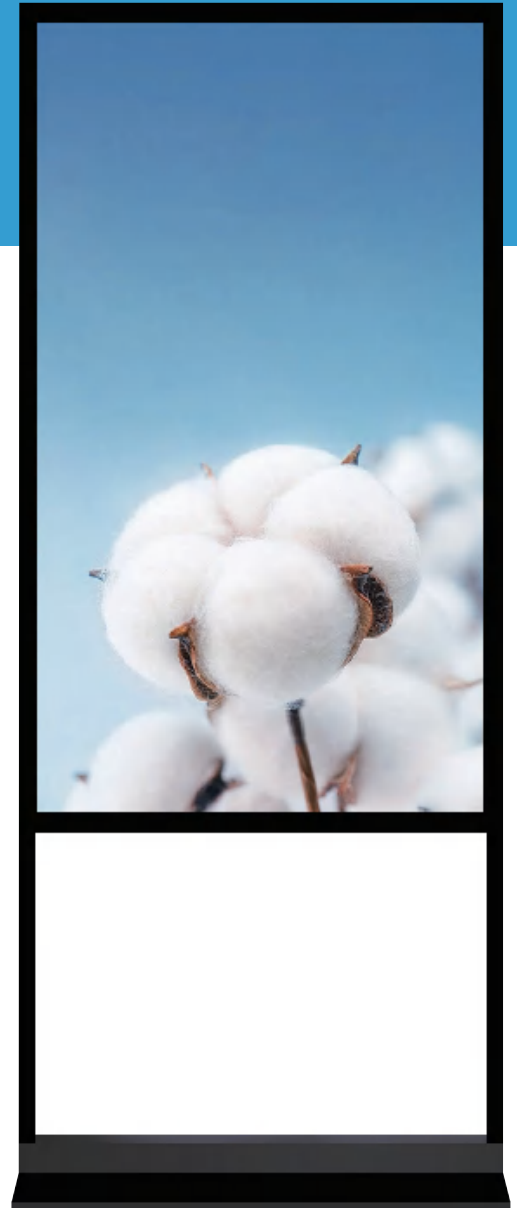
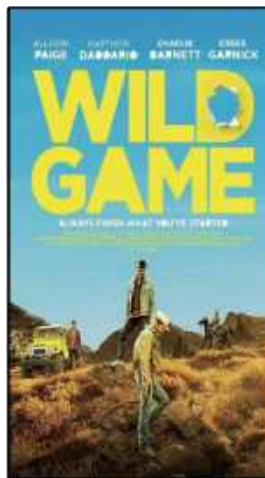
APPLICATION



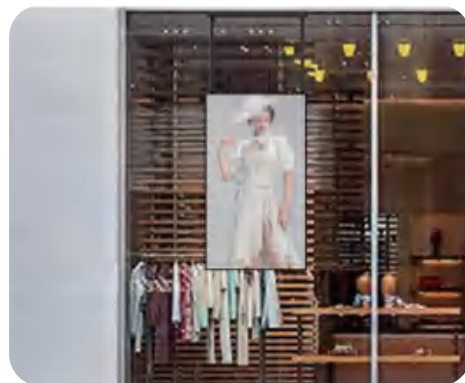


WINDOW DISPLAY

- ▶ Higher brightness, 700-5000nits
- ▶ Double sided, display same/different contents
- ▶ Customized photosensitive module



APPLICATION



PRODUCT PARAMETER

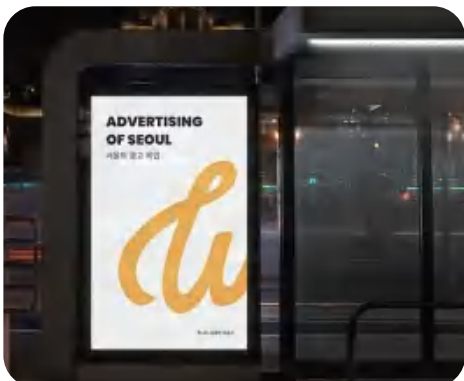
Appearance	Exterior color	White panel white frame/customized
	Dimensions	1299.6*788.3*74(L*W*T)
	Body material	Sheet metal
	Installation method	Floor stand
Display	Size	43"/49"/55"/65" TFT LED
	Maximum resolution	3840*2160
	Brightness	700cd/m2 2500cd/m2 (high gloss surface optional 1000-2500)
	Contrast	3000:1
	Viewing angle	(Up/Down/Left/Right): 89°/89°/89°/89°
	Response time	6ms
	Color	16.7M colors
	Power And Power Consumption	100V~240V AC, ≤380W



OUTDOOR ADVERTISING MACHINE



APPLICATION



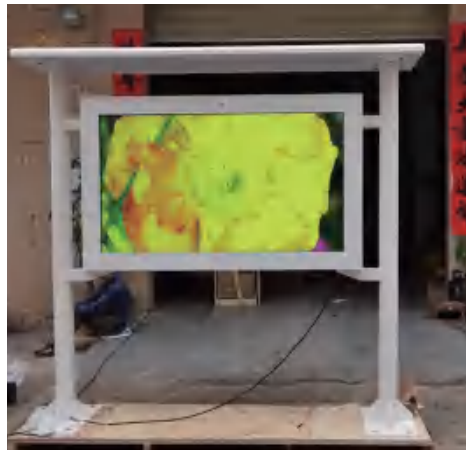
PRODUCT PARAMETER

Cooling Method	Air Conditioning
Protection Level	IP65
Power Input	AC 100V~240V
Door Opening Method	Rear door
Glass (default)	Super white full rigidity
Resolution	4k
Lightning Protection	Three-level lightning protection
Time Switch	KG316
Viewing Angle	178°
Response Time	8ms
Modular Socket	Triple
Brightness	3000 nits
Backlight Mode	LED direct type
Sower Supply	Industrial Meanwell Power
Speaker	Waterproof speaker



CUSTOMIZED PRODUCT







LED POSTER



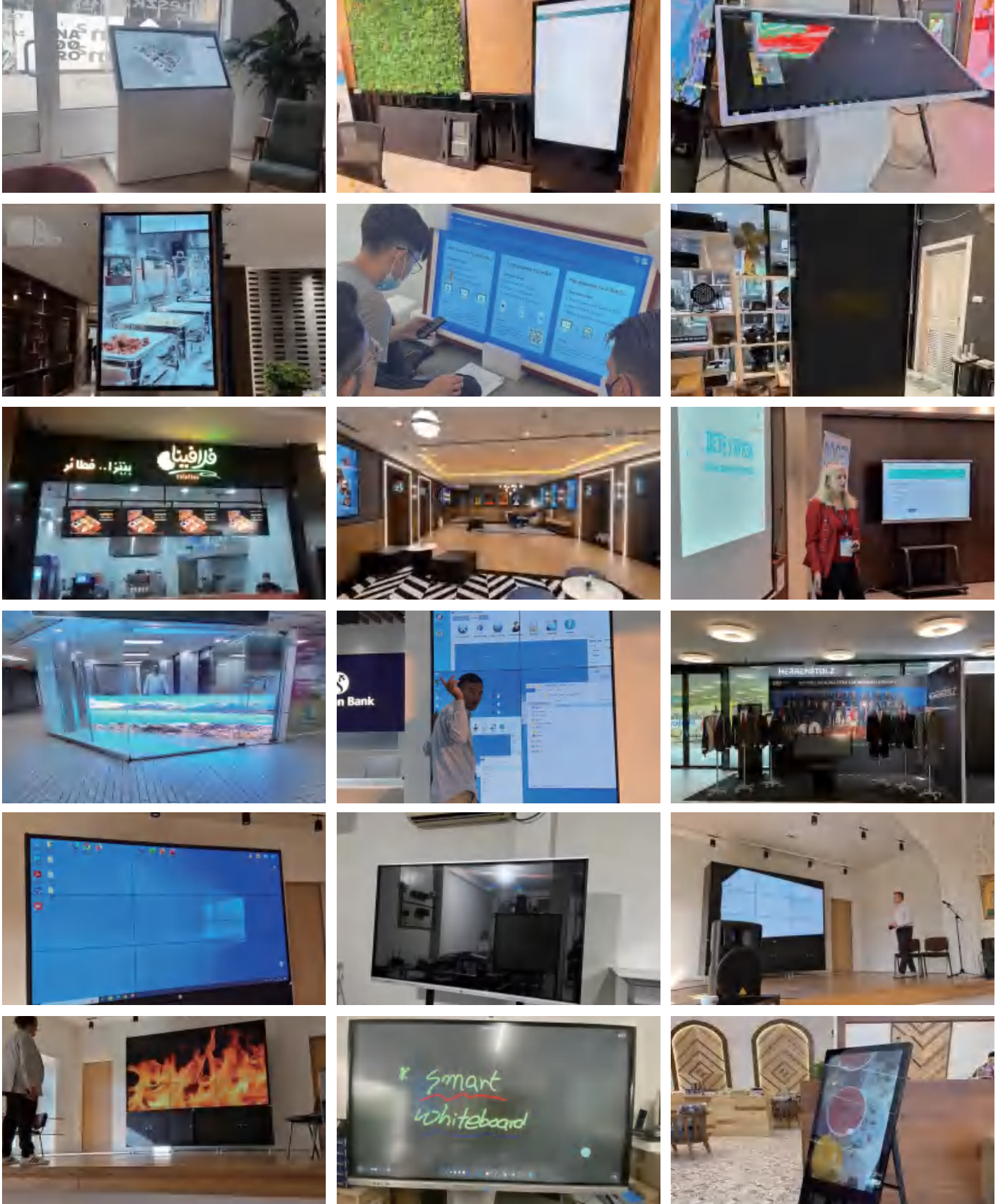
LED CABINET

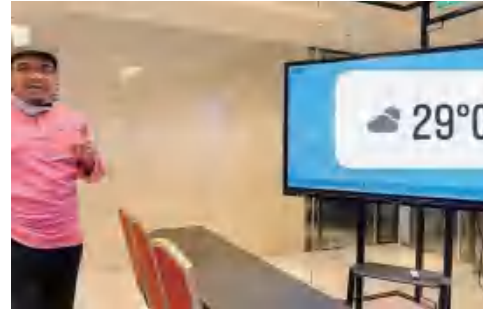
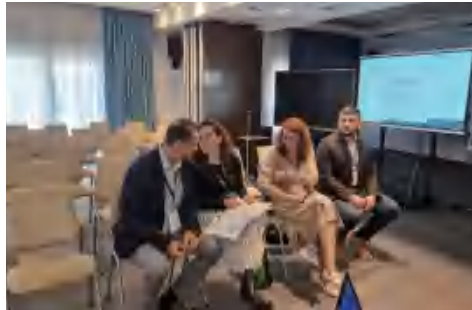
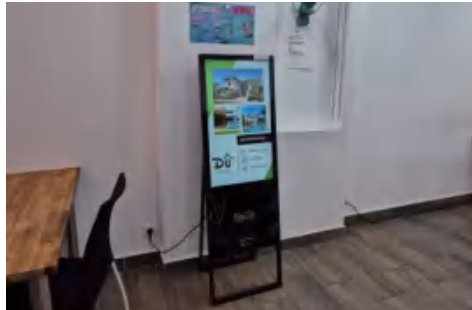


LED MODULE



CUSTOMER FEEDBACK

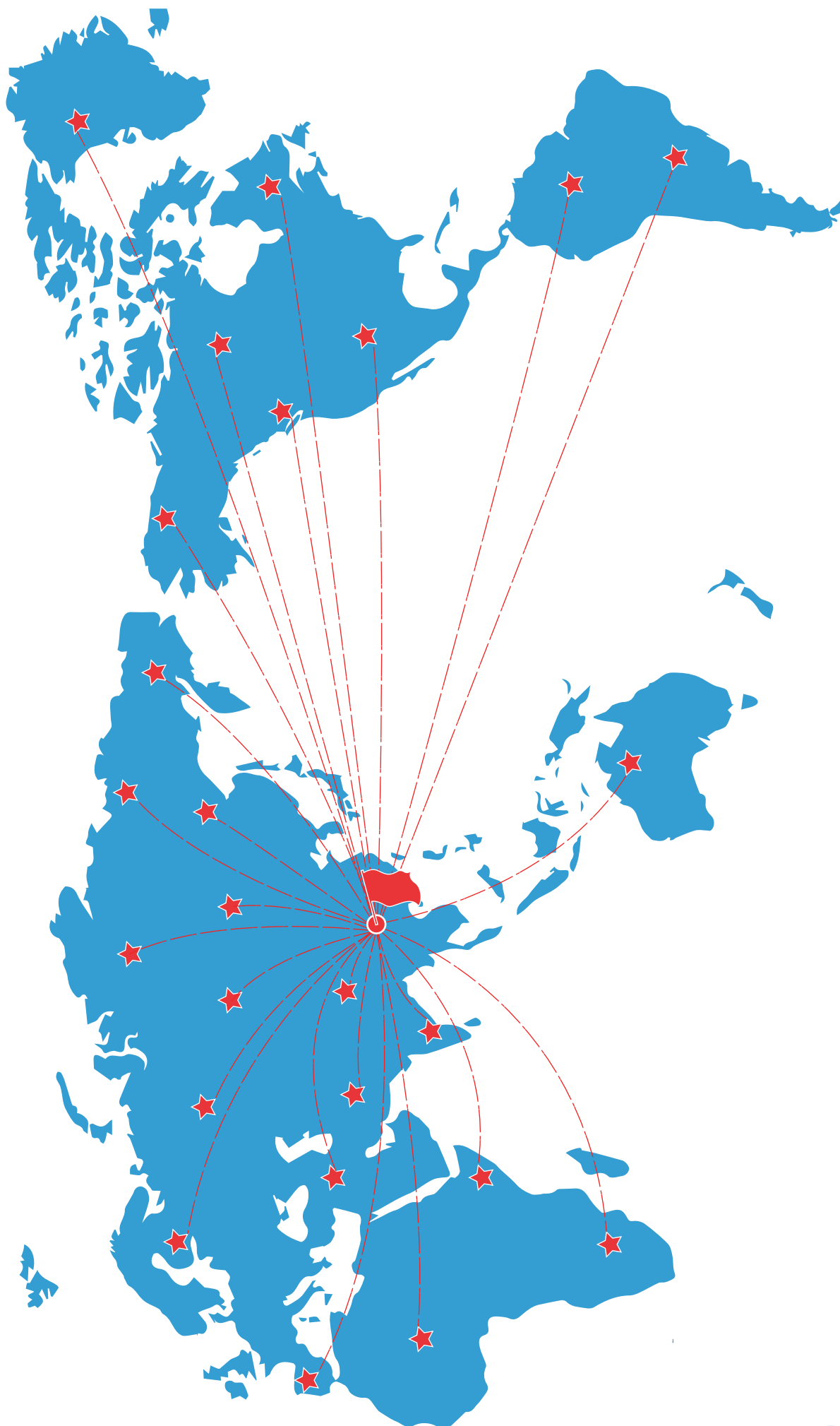




BUSINESS PARTNER







 SOLD ALL OVER THE WORLD