



SUNRISE

SHOUGUANG SUNRISE INDUSTRY CO.,LTD.

SHOUGUANG SUNRISE INDUSTRY CO.,LTD.

It is a company specializing in the production and sales of Wood Products:

1. Wood Panels.

Film faced plywood, Commercial plywood, Fancy plywood, Block board, MDF, HDF, Chipboard, OSB, Hardboard, Slat wallboard, T & G Board, HPL (Formica), Decorative board (Melamine / PVC / PU paper / UV / HPL / Polyester/Wood veneer/Aluminum Foil laminated), LVL / LVB, Formwork beam, Timber walers, Scaffolding planks, H-20 beam, etc.

2. Other Wood Products.

HDF / MDF / Plywood Door Skins (Flat & Molded, White Primer / Melamine / Wood Veneer / PVC Foil) & Doors, PVC Cabinet Doors & Cabinets, School / Office / Home Furniture, HDF Laminate Flooring, PVC / ABS Edge Banding, etc.

Our Products are mainly for exportation. We always adhere to "Credit First" and "Quality & Price Reasonable". Friends both at home and abroad are welcomed to visit our co. to do business together on mutual benefits.



Film Faced Waterproof Shutter Plywood



Size(mm):

1220x2440, 1250x2500, 915x1830, 1200x1800,
1525x3050, 2000x6000, etc

Thickness(mm):

6.5, 9, 12, 15, 17, 18, 20, 21, 27, 30, etc.

Core: Poplar, Eucalyptus, Combine, Birch,
Hardwood, etc.

Glue: MR, Melamine, WBP (Phelonic), etc.

Film: Brown, Black, Anti-slip (Wire mesh), Printing
Logo, Color, etc

Usage: Formwork, Packing, Flooring, etc.





SHOUGUANG SUNRISE INDUSTRY CO.,LTD.

Commercial Plywood, Fancy Plywood, Block Board



Size(mm):

1220x2440,1250x2500,915x2150,1200x1800,1830x3100,etc

Thickness (mm): 2.0 - 40mm, etc.

Core: Poplar, Eucalyptus, Combine, Birch, Hardwood,etc.

Glue: MR, E2, E1, E0, WBP (Phelonic), etc.

Face & Back: 1).Veneers—Bintangor,Okoume/Mahogany, Poplar, Pine, Pencil Cedar, Keruing, Birch, Sapelli, Oak, Teak, Ash, Beech, & Engineered Veneers, etc.

2).Other materials: Melamine, HPL, PVC, Paper Overlay(PU paper), Polyester Paper, UV , Aluminum Foil, etc.

Usage: Decoration, Furniture, Packing, Construction, etc.



Laminated Veneer Lumber---LVL,LVB



Name: Scaffolding plank, Timber Waters, Beams Furniture Parts, etc.
Size(mm): Lengths 8000, Widths 1220. Thicknesses 110.
Core: Poplar, Pine, etc.
Glue: MR, Melamine, WBP, etc.
Surface: Raw, Wood Veneer, Acrylic Paint, etc
Usage: Formwork, Packing, Furniture, Construction, etc.





SHOUGUANG SUNRISE INDUSTRY CO.,LTD.

MDF, HDF, Slotted MDF Board



Size(feet):3x7,4x8,5x8,6x8,6x12.

Thickness (mm): 2.5-40mm.

Grade:E2, E1.,E0;

Standard, Waterproof, Fireproof.

Density (kgs/cbm): 690, 720, 740, 850, 880, etc.

Types: Raw & Laminated(Melamine/PU/Veneer
/Aluminum/PVC/HPL/UV, etc)

Usage: Decoration, Furniture, Packing, etc.



Chipboard(Particle board),OSB.



Size(feet):

4'x8',5'x8',6'x8',6'x9',etc.

Thickness (mm): 9, 12, 15, 18, 21, 25mm, etc.

Density(kgs/cbm): 690,720. etc.

Grade: standard, E2, E1, E0.

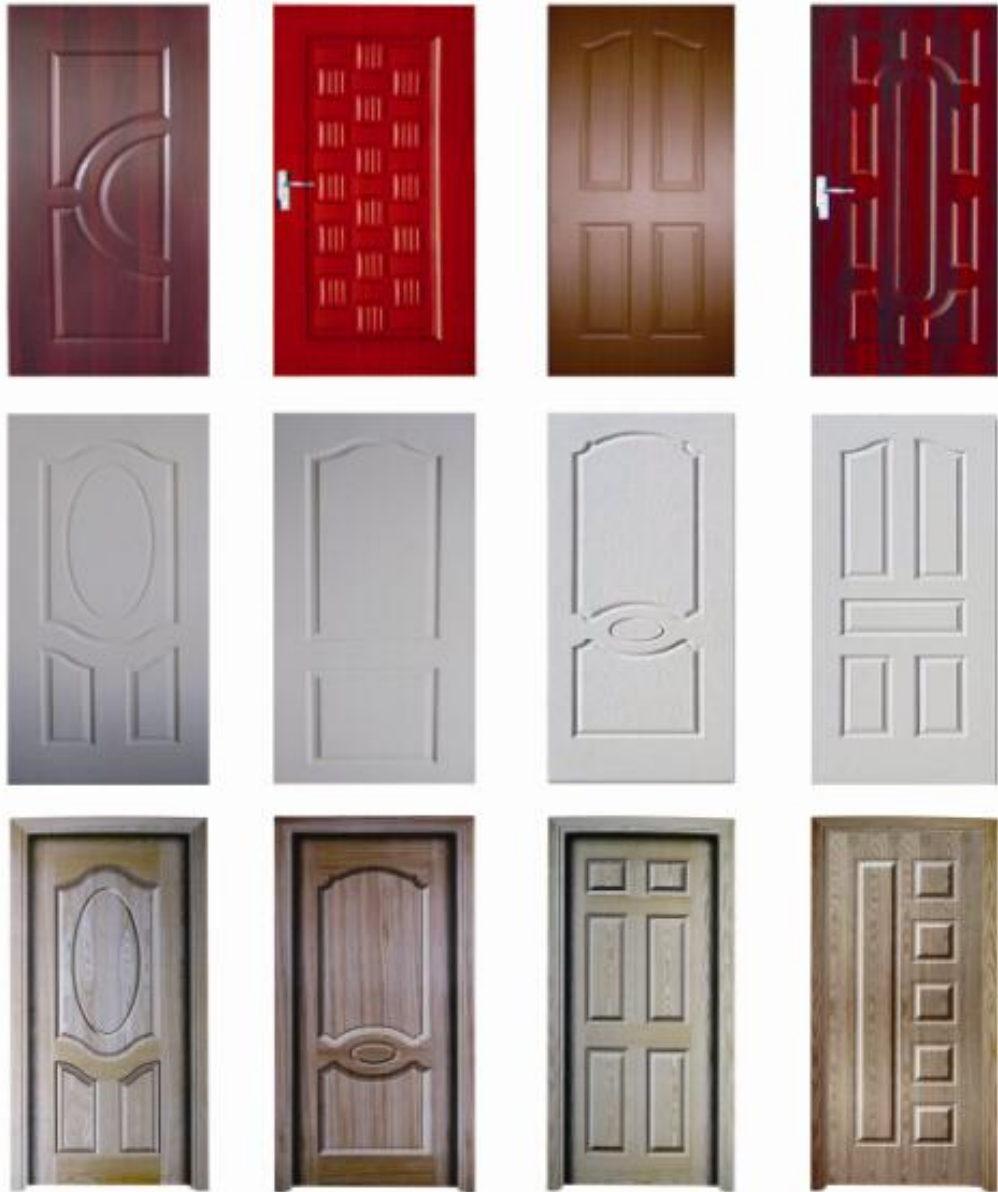
Types: Raw & Laminated
(Melamine/PU/Veneer/Aluminum /PVC/HPL/UV, etc)

Usage: Decoration, Furniture, Construction. etc.





Door Skins & Doors



Size(mm): 640/740/830/920/1050 x 2050/2150. **Thickness (mm):** 3.2, 4.2, etc.—door skin; 40.—door.

Types: 1).MDF, HDF, Plywood Door Skin

-----raw, white primer, Painted.

2).Flat, Molded and Engraved Door skin

-----wood veneer, melamine, PVC, etc laminated.

Cabinet Door, Cabinet, Steel & Wood Furniture



We design and produce different Furniture as requested with the following materials:
Natural Wood, PVC/Melamine/Veneer/UV laminated board(MDF/Chipboard/Plywood),etc.

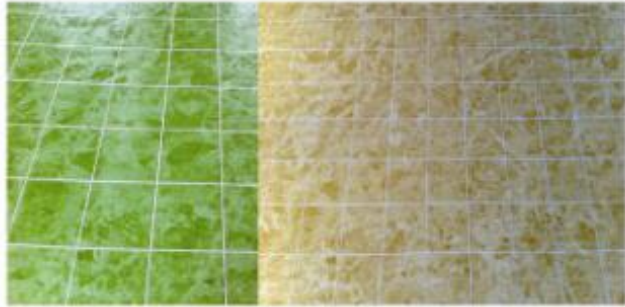




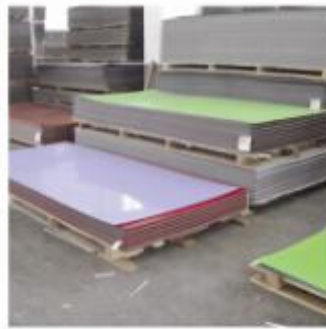
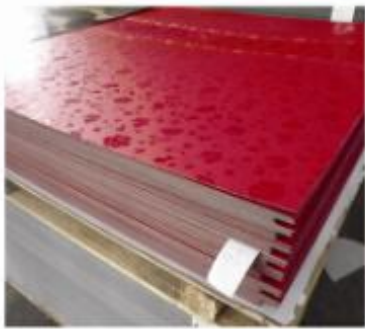
UV Board/HPL/Hardboard



Aluminum Faced MDF



UV Board—Marble Tile



HPL(Formica)—Standard, Postformed, Compact, Flower Patten, etc.



Hardboard—Standard, Embossed. (2.0-6.0mm)

Melamine/PVC/PU/HPL/Polyester Lamination

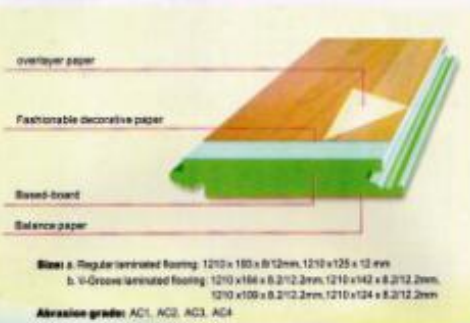


Synchronous Flower Patten



Melamine Colour

HDF Laminated Flooring



Kitchen Cabinet



Oven cabinet



Corner cabinet



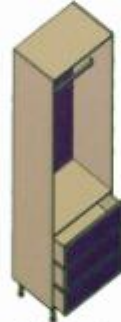
L-shape cabinet



Drawer cabinet



Wall cabinet



Wardrobe



Pantry



Base cabinet



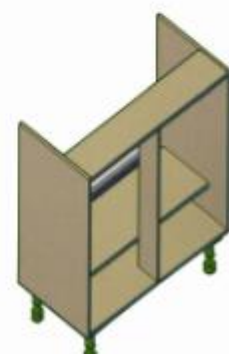
Wine cabinet



Blind cabinet



Drawer cabinet



Sink cabinet



SHOUGUANG SUNRISE INDUSTRY CO.,LTD.

Hard Board

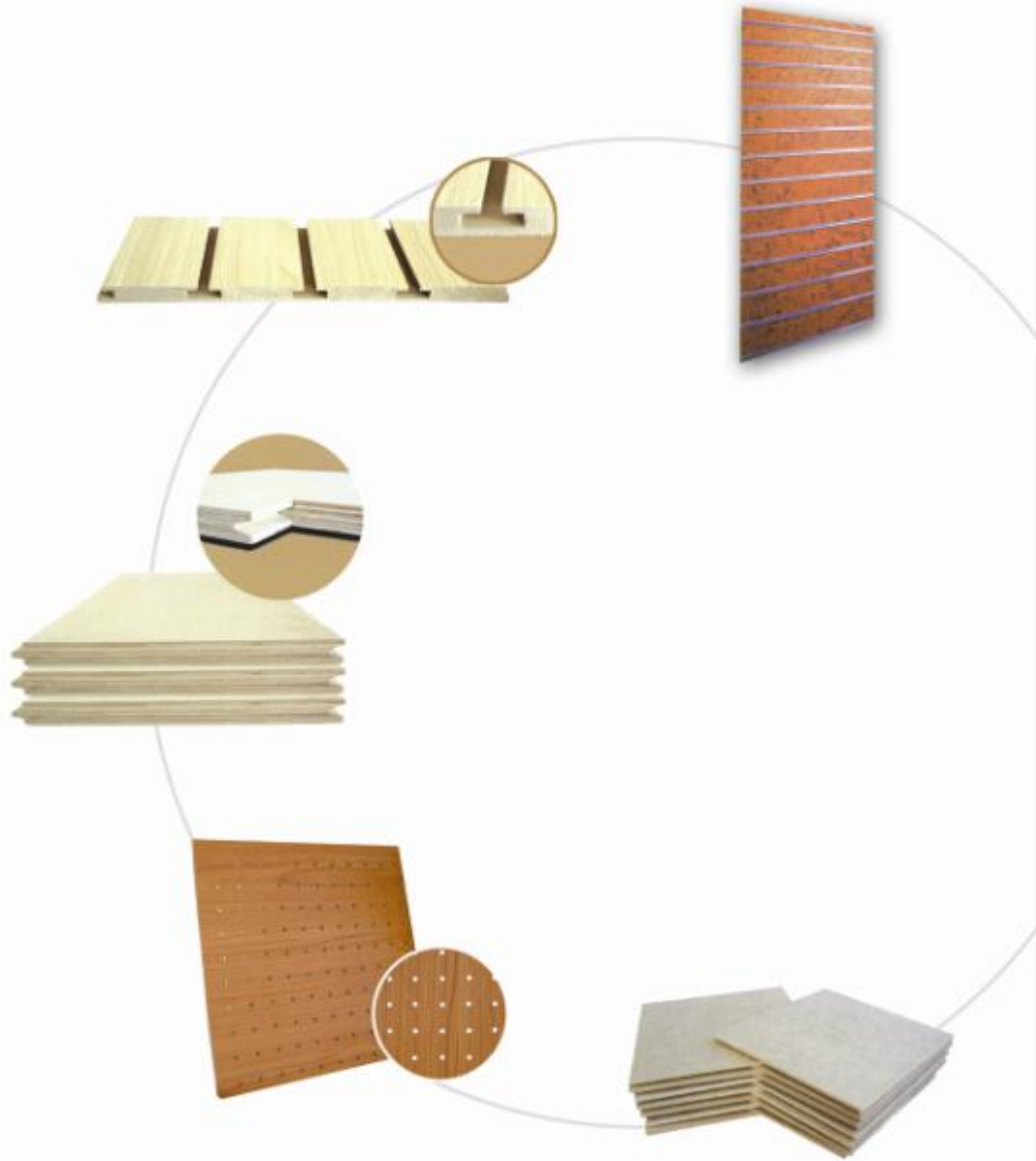


Product:	HARDBOARD
Standard size:	1220×2440mm
Thickness	2.00~4.00mm
Utilization:	Furniture;Building

FANCY PLYWOOD



Product:	FANCY PLYWOOD
Standard size:	1220×2440mm
Thickness	1.60~3.60mm
Utilization:	Furniture;Building
Color:	NATURAL VENEER, EP, EV





SHOUGUANG SUNRISE INDUSTRY CO.,LTD.

*Home Furniture
*Office Furniture



Tel :0086-536-5201668
Fax :0086-536-5196001
Mobile:0086-13336367886
Email :sunrise@sunriseproduct.cn



Wardrobe Sets
 SGWDS-01
 W800*D450*H1800mm
 W400*D350*H450mm
 W600*D450*H880mm



Chest of drawers
 SGCOD-02
 W600*D400*H800mm



Chest of drawers
 SGCOD-03
 W470*D390*H1490mm



Chest of drawers
 SGCOD-04
 W1400*D500*H800mm



Chest of drawers
 SGCOD-05
 W600*D400*H620mm



Wardrobe
 SGWD-01
 W800*D450*H1800mm



Wardrobe
 SGWD-02
 W1200*D450*H1800mm



Wardrobe
 SGWD-03
 1500*D450*H1800mm



Shoe cabinet
SGSC-06
W1200*D240*H915mm



Shoe cabinet
SGSC-01
W600*D300*H450mm

SHOE CABINET



Shoe cabinet
SGSC-02
W630*D240*H810mm



Shoe cabinet
SGSC-03
W630*D240*H1200mm



Shoe cabinet
SGSC-02A
W630*D240*H930mm



Shoe cabinet
SGSC-03A
W800*D240*H1200mm



Shoe cabinet with mirror
SGSC-05
W630*D180*H1800mm



Computer Desk Sets
 CDS-01
 COF W400*D450*H450
 BC W600*D300*H100
 CD W1200*D600*H750mm



Computer Desk
 SGCD-02
 W1200*D550*H850mm



Computer Desk
 SGCD-03
 W1100*D500*H750mm



Computer Desk
 SGCD-04
 W1200*D550*H850mm



Laptop desk
 SGLD-01
 L480*W270*Adjustable



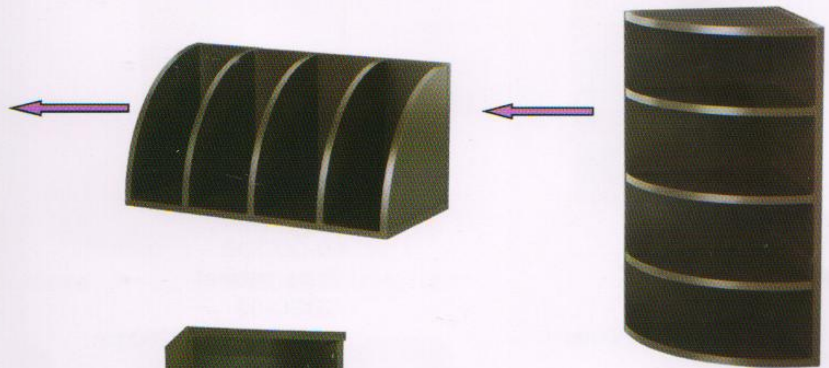
Student Desk
 SGSD-Sigle01
 W600*D400*H720mm



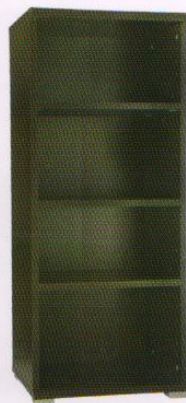
Student Desk
 SGSD-Double01
 W1050*1100*H720mm



Bookcase
SGBC-04
W600*D290*H290mm



Bookcase
SGBC-01
W600*D240*H1500mm



Bookcase
SGBC-02
W600*D240*H1200mm



Bookcase
SGBC-03
W600*D240*H900mm



Chair
SGCH-01
W450*D480*H800mm



Chair
SGCH-02
W450*D450*H850mm



Chair
SGCH-03
W450*D450*H850mm



Coffee Table
SGCT-01
W800*D480*H310mm



Coffee Table
SGCT-02
W620*D360*H370mm



Bookshelf
SGBS-01
W790*D390*H790mm

Our Service:

- *Excellent quality with perfect quality
- *More than 100 colors for choice
- *Support customized
- *Support OEM
- *Support flat pack and also assembled pack
- *Fast delivery time-30 days after orders

***Thanks for reading our catalogue,we are looking for the cooperation with you !



SHOUGUANG SUNRISE INDUSTRY CO.,LTD.

Add:Shengcheng Street, Shouguang City, Shandong, P.R.China