

THE FUTURE OF AI

Hunan Great Wall Computer System Co., Ltd

ADDRESS

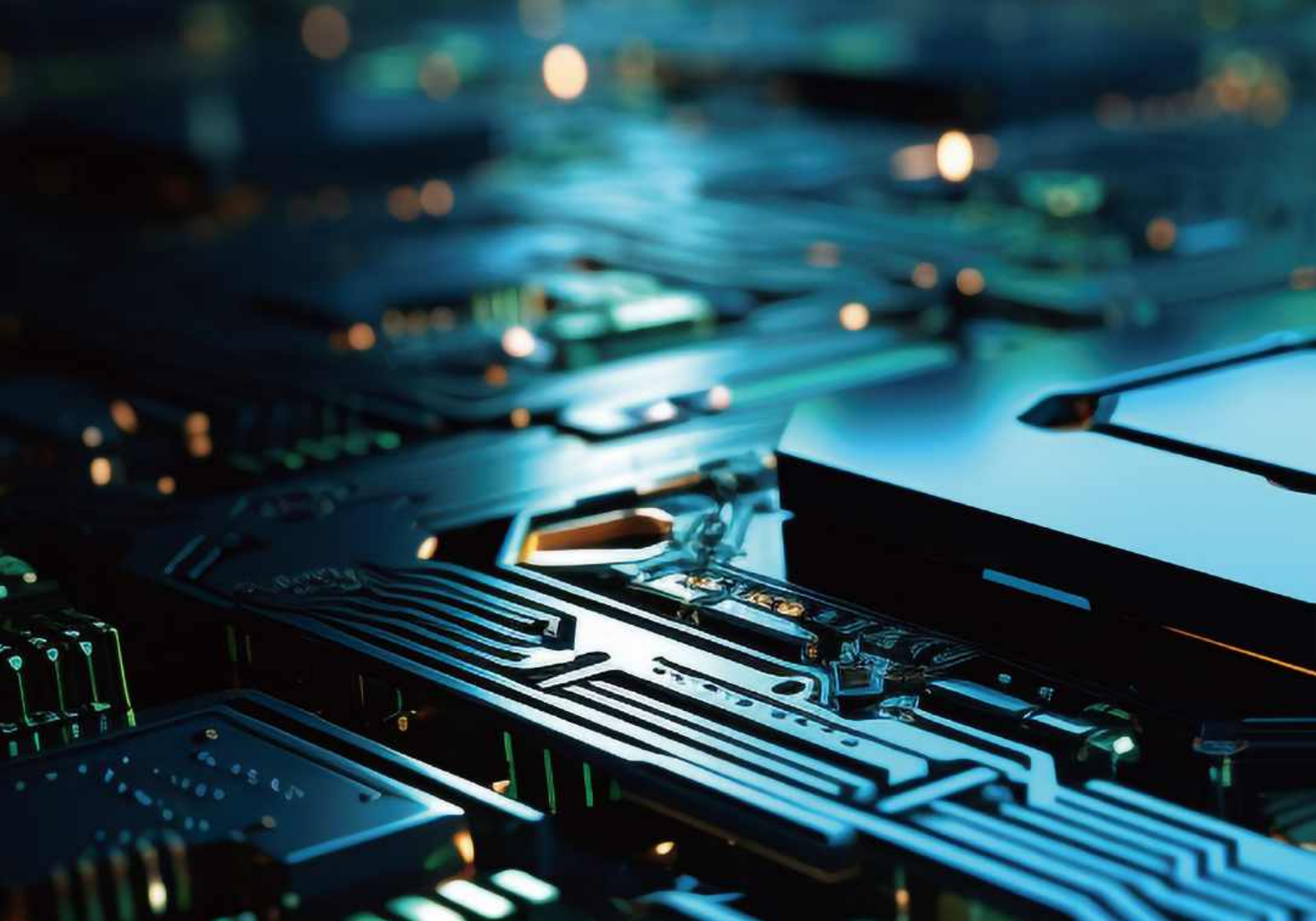
Hunan Great Wall Industrial Park, Tianyi Science and Technology City,
Xiangyun Middle Road, Tianyuan District, Zhuzhou City, Hunan Province, China

WEBSITE

<https://www.futuzen.com>

The logo for Futuzen, featuring a stylized 'F' icon composed of three stacked squares to the left of the word 'Futuzen' in a bold, sans-serif font.

Futuzen



PRODUCT PORTFOLIO

About us 02-08

- COMPANY PROFILE
- THE ROAD TO DEVELOPMENT
- PARTNERS

Notebook 10-18

- Gbook 14 Pro
- Gbook 14 Air
- Gbook 16 Pro
- Gbook 16 Plus

Mini PC 20-34

- M703
- M710
- M501
- M512
- M301
- M302
- M310

Desktop computer 36-42

- ShiHeng X
- ShiHeng T
- ShiHeng D60Y

- ShiHeng D65Y
- JunJie B

Display 44-60

- GL34UQW-Z2
- GL34UQW-Z3
- GL315Q-D1
- ML215F-S3
- PL14FD-S2
- PL156F-S1
- VL27Q-C1

Tablet 62-68

- LM1095011P
- WM1197012S
- WM1260013S

Projector 70-82

- U1
- X1
- Z1
- Happy10C
- P10
- P20

01 About US

COMPANY PROFILE



Hunan GreatWall

Wholly-owned subsidiary of China Great Wall Technology Group Co., LTD(Stock code:000066)

Important hardware production base of China Electronic Corporation.

Hunan GreatWall is dedicated to providing full industry chain services of high-tech products for global customers, striving to become a leading global provider of high-end electronic information product services. By strengthening and enhancing capabilities in marketing, product development, supply chain management, manufacturing, and operation management, we aim to build a product system primarily focused on laptops. We engage in deep collaborations with internationally renowned brands and operators, providing strong support for the development of global computer industry.



Zhuzhou: 47 km²
Shenzhen: 33 km²



Zhuzhou: 1580
Shenzhen: 560



Register Capital: 200 million yuan
Total Asset: 1 billion yuan



Income: 2.42 billion yuan
Export: 1.261 billion yuan

THE ROAD TO DEVELOPMENT

Great Wall
0520CH

1985

CGW cooperated
with Intel

1987

Established
under the name
of Great Wall
Microcomputer
Factory

1988

IIPC—The first
joint venture
was established
by Great Wall
Group and IBM
established.

1994

PC department
was established

1995

CGW cooperated
with Microsoft

1996

ISTC—The
joint venture
was established
by Great Wall
Group and IBM
established.

2004

Hunan Great
Wall Computer
System Co., Ltd.
was established

2015

Achieving
an annual
production
capacity of 2
million units

2020

Achieving an
annual produc-
tion capacity of
5 million units,
Great Wall Inter-
national was es-
tablished

2023

PARTNERS



02 Notebook

Gbook 14 Pro

- ◎ All-aluminum alloy Integrated fuselage Portable and light
- ◎ Dual memory slot Upgrade at will
- ◎ 175 degrees full opening and closing
- ◎ 75Wh large capacity battery surf the Internet without worry



Type	Details	Descriptions
System Physical Standard Configuration		
Product Form	Color	ACD metal B plastic
	Dimensions	314.47*226.73*17.55mm
	Housing	180°
LCD	Screen Size	14 inch
	Aspect ratio	16:10
	Screen Resolution	1920*1200 FHD IPS 60Hz
Battery	Type	Lithium-ion polymer battery, Smart Battery
	Capacity	11.61V 6460mAh, 75Wh
RTC	RTC battery	/
System Hardware Configuration		
CPU OPTION 1	Type	12th Generation Intel® Core™ Processors-Alder Lake-H
	Model No	i5-12450H: 8C 12T, up to 4.40 GHz, 35W
GPU	Type	Intel® UHD Graphics for 12th Gen Intel® Processors
RAM	Capacity	16GB LPDDR4 onboard
Storage	Capacity	1TB M.2- Type 2280 Key M SSD, PCI-e interface (Gen 4)
Camera	Front	2.0MP/1080P, with 2xdMic, with LED indicator, with physical shutter on B cover
Audio	Speaker	2 x Built-in 4Ω/2W speakers, 3813X2,AAC
Fingerprint Reader	Intergrated on Power key	SPI interface (11.1MM) ,Power button fingerprint identification, one-click login
Touchpad	Built-in	I2C, Dualpoint button (124x77MM)
Keyboard	Input device	US layout, English keyboard with backlit, anti-fingerit, with level 4 brightness adjustment
TPM	Support	fTPM 2.0
Sensor	Hall sensor	Yes
	Light sensor	Yes, on camera module
Wireless Network Connections		
WIFI	WIFI Module	PCI-E&CNVI interface, 802.11 a/b/g/n/ac/ax+BT5.2(AX201) onboard
4G LTE	Built-in	/
Interface Configuration		
TF card	Extentional memory	1x Micro SD card socket
SIM card	Data storage	/
USB Interfaces	Type A	1xUSB3.1 Gen2 Type A(10Gbps) on MB+2xUSB 3.0 Type A (5Gbps)on DB
	Type C	2xFull-function Type C on MB
Headphone Jack	Auido Output	1x 3.5mm standard headphone jack
HDMI Interface	Video Output	1xHDMI 1.4 Type A on MB
RJ45	Ethernet Network	/
DC jack	Power supply	/
Kensington Lock	Security Interfaces	Yes
Main Accessories		
Power adapter	Satandard configuration	20V/3.25A, 65W Type C desktop adapter, support PD fast charging, 1.5M
Software Configuration		
Operating System	System version	Windows 11 Home

Gbook 14 Air

- ◎ Great Wall International's first AI PC laptop
- ◎ Intel Core Ultra 7 AI cpu
- ◎ The Mg-Al body is as light as 0.98kg and as thin as 14.96mm
- ◎ 32GB LPDDR5x 6400Mhz high-speed memory
- ◎ 1TB high-speed SSD



Type	Details	Descriptions
System Physical Standard Configuration		
Product Form	Form Factor	Notebook clamshell 180°
	Material	ACD Mg-AL, B plastic
	Dimensions	309.52*209.94*14.99mm
	Weight	998g
LCD	Screen Size	14"
	Screen Resolution	2880x1800 /16:10/OLED/ 100% DCI-P3/120Hz
TP	Touch Module	/
Battery	Type	Lithium-ion polymer battery
	Capacity	4S1P, 15.48V, 3900mAh,60Wh
System Hardware Configuration		
CPU	Type	Intel® Meteor Lake-H Ultra 155H ,16core (6P+8E+2LP) 22 thread
	Speed	Max Turbo Frequency 4.8 GHz
GPU	Type	intergrated, Intel® Arc™ graphics
Memory	onboard	16/32GB 7467MT/s LPDDR5x onboard
Storage	SSD	512 GB/1TB SSD, 2 *M.2 SSD socket
Camera	Front	Front 1080p(standard)+, Front 720p Infrared (IR)-, Camera+Mic physical power on/off switch Camera shutter
	Rear	/
Speaker	Built-in	Built-in stereo speakers ,≥2W
Fingerprint	Integrated on Powerkey	Yes
Hall-sensor	Built-in	Yes
Network Connections		
WIFI	WIFI Module	WIFI 6E
4G LTE	Built-in	NA
Bluetooth	BT Module	BT5.3
Ethernet Network	External Dongle	TypeC dougler (USB-C to RJ45)
Interface Configuration		
Left Interface	HDMI	1*HDMI2.1
	USB Interface	1*USB-C full function(USB3.2 gen2, DP1.4,PD3.0)
	Thunderbolt	1*Thunderbolt 4.0
	Audio Output	1* ϕ 3.5mm standard headphone jack, Mic&Audio combo ,CTIA
Right Interface	Lock	1*Kensington Lock
	USB Interface	1*USB-A (USB3.2 gen1)
	SD card reader	1*Micro SD card slot(push-push)
Keyboard	Input Device	78 key backlit US Keyboard
Indicator		
Power	Windows	DC IN/ Battery full :white, charge:orange
Main Accessories		
Power adapter	Standard Configuration	TypeC 100W desktop adapter
Software Configuration		
Operating System	Windows	Windows 11 home Chinese version
Certification		
Certification	Standard Configuration	CCC、Energy efficiency、Energy conservation、SRRC、CE

Gbook 16 Pro

- ⊙ Super speed memory, help big core display
- ⊙ Fingerprint unlock, lock security
- ⊙ Backlit keyboard, no worries at night
- ⊙ Rich extension interface Work with ease
- ⊙ Capture every sound detail, high fidelity audio-visual feast



Type	Details	Descriptions
System Physical Standard Configuration		
Product Form	Color	ACD metal B plastic
	Dimensions	357.5*251.5*16.7MM
	Housing	180°
LCD	Screen Size	16 inch
	Aspect ratio	16:10
	Screen Resolution	1920*1200 FHD IPS 60Hz 300cd/m ² 100% <i>s</i> RGB
Battery	Type	Lithium-ion polymer battery, Smart Battery
	Capacity	11.61V 6460mAh, 75Wh
RTC	RTC battery	/
System Hardware Configuration		
CPU OPTION 1	Type	12th Generation Intel® Core™ Processors-Alder Lake-H
	Model No	i5-12450H: 8C 12T, up to 4.40 GHz, 35W
GPU	Type	Intel® UHD Graphics for 12th Gen Intel® Processors
RAM	Capacity	16GB LPDDR4 onboard
Storage	Capacity	1TB M.2- Type 2280 Key M SSD, PCI-e interface (Gen 4)
Camera	Front	2.0MP/1080P, with 2xMic, with LED indicator, with physical shutter on B cover
Audio	Speaker	2 x Built-in 4Ω/2W speakers, 3813X2, AAC
Fingerprint Reader	Intergrated on Power key	SPI interface (11.1MM) , Power button fingerprint identification, one-click login
Touchpad	Built-in	I2C, Dualpoint button (124x77MM)
Keyboard	Input device	US layout, English keyboard with backlit, anti-fingerprint, with level 4 brightness adjustment
TPM	Support	fTPM 2.0
Sensor	Hall sensor	Yes
	Light sensor	Yes, on camera module
Wireless Network Connections		
WIFI	WIFI Module	PCI-E&CNVI interface, 802.11 a/b/g/n/ac/ax+BT5.2(AX201) onboard
4G LTE	Built-in	/
Interface Configuration		
TF card	Extentional memory	1x Micro SD card socket
SIM card	Data storage	/
USB Interfaces	Type A	1xUSB3.1 Gen2 Type A(10Gbps) on MB+2xUSB 3.0 Type A (5Gbps)on DB
	Type C	2xFull-function Type C on MB
Headphone Jack	Auido Output	1x ϕ 3.5mm standard headphone jack
HDMI Interface	Video Output	1xHDMI 1.4 Type A on MB
RJ45	Ethernet Network	/
DC jack	Power supply	/
Kensington Lock	Security Interfaces	Yes
Main Accessories		
Power adapter	Satandard configuration	20V/3.25A, 65W Type C desktop adapter, support PD fast charging, 1.5M
Software Configuration		
Operating System	System version	Windows 11 Home

Gbook 16 Plus

- © Equipped with AI CPU:Ultra 7 155H
- © 28W base power consumption, up to 115W power consumption
- © Equipped with 100w adapter; It has a 70Wh battery capacity and supports 8-10h battery life
- © With dual camera configuration, IR camera can carry out face recognition



Type	Details	Descriptions
System Physical Standard Configuration		
Product Form	FormFactor	Notebook
	Materials	AD metal BC plastic
	Dimensions	356.8*244.55*18.1mm
	Hinge	180°
LCD	ScreenSize	16 inch
	Aspectratio	16:10
	ScreenResolution	1920*1200 FHD IPS 60Hz ≥250cd/m² 45%NTSC
Battery	Type	Lithium-ion polymer battery, fast charging
	Capacity	Smart Battery, 11.55V, 6060mAh 70Wh
System Hardware Configuration		
CPU OPTION 1	Type	Meteor Lake H-series (code name MTL-H) (TDP45W)
	Model No	Intel® Core™ Ultra 7 155H, 6P+8E+2LPE Core 22T, 3.8~4.8GHz, 28W
GPU	Type	Intel® ARC™ Graphics 5
RAM	Capacity	0GB DDR5 onboard+1x16GB sodimm DDR5
Storage	Capacity	512GB PCIE Gen4 - 2280 SSD
Camera	Front	Front 1080p(standard)+, Front 720p Infrared (IR)-, Camera+Mic physical power on/off switch Camera shutter
Audio	Speaker	Built-in 4Ω/2W speaker *2
	Mic	HD Audio, Built-in (dual) digital microphones
Fingerprint Reader	Intergrated on Power key	Power button fingerprint identification, one-click login
Touchpad	Built-in	I2C, Support Number button multi-touch support, gestures and scroll function
Power button	Button	Seperated Power button key(On DB)
Keyboard	Input device	US layout, English keyboard with backlit, Spill resistant with drain for drainage,Typical keyboard w/o removeable design
TPM	Type	/
Sensor	G sensor	Support
	Hall sensor	FTPM2.0&dTPM 2.0
RTC	RTC connector	With RTC battery
Wireless Network Connections		
WIFI	WIFI Module	WIFI M.2 Socket 2230 E-KEY、 Intel®Wi-Fi 6 (802.11ax) + BT 5.2 (AX201)
LTE	M.2 slot	/
Interface Configuration		
I/O ports	MB IO(/Left)	1* Type-C Full function 3.2 Gen2(MB) (10Gbps) 、 1*HDMI Type A 2.0 (MB)、 1* USB-A 3.2 gen1 (MB) (5Gbps) 、 1* USB-A 3.2 gen1 (MB) (5Gbps) 、 1* Type-C Full function 3.2 gen1 (MB) (5Gbps)
	DB IO(/Right)	1*Security lock slot (Mini Saver)、 1*RJ45 (DB)、 1* USB-A 2.0 (DB) (480Mbps) 、 1*Φ3.5mm standard headphone jack (DB)、 1*SD card (DB)、 1*Camera+Mic physical power on/off switch (DB)
Main Accessories		
Power adapter	Satandard configuration	100W 20V 5A Type-C desktop type charger(Support PD fast charge), 1.2M
Software Configuration		
Operating System	System version	Windows 11 Home

03 Mini pc

M703

- ◎ The top cover design LED lamp circle, can choose different style top cover (optional)
- ◎ Support for wireless charging (optional)
- ◎ Support BOX speaker (optional)
- ◎ I/O interfaces are rich

IPS display screen version



Wireless charging version



Type	Details	Descriptions
System Physical Standard Configuration		
Product Form	Product Form	Mini PC
	Color	Grey
	Dimensions	137x133x54mm
	Weight	TBD
	Housing	Metal+Plastic
System hardware configuration		
CPU	Model	AMD Ryzen 7 7840U、AMD Ryzen 7 8845HS (intel 125H,155H optional)
GPU	Type	AMD Radeon 780M
RAM	SO-DIMM	DDR5 5600MT/s SO-DIMM x2 up to 64GB
SSD	M.2	M.2 SSD 2280 x1 PCIe4.0x4 up to 2TB、M.2 SSD 2242 x1 SATA3.0 up to 2TB
MIC	Built-in	Digital MicroPhone
Speaker	Built-in	Dual Speakers
Advanced (optional)	Wireless Charger	Qi wireless charging protocol, Maximum output 15W
	LCD Display	2.1 inch IPS 480*480(RGB) LCD (optional)
Security	Yes	fTPM
Network Connections		
WiFi	WiFi module	WiFi6E M.2 2230
Bluetooth	Built-in	BT5.3
Ethernet Network	Type	LAN 2.5Gbps
Interface Configuration		
USB interface	Data transfer supportive	USB3.2 Gen2 Type-A×3, USB 2.0 Type-A×2
Audio jack	Speaker&MIC	3.5mm Combo Jack ×1
DC connector	Power	φ 5.5mm DC power connector ×1
HDMI interface	Video output	HDMI 2.0 TypeA ×2
DP interface	Video output	Type C DP2.0
SD Solt	SD Card	SD3.0 card up to 512GB ×1
VGA interface	Video output	-
Type-C interface	Type-C	Type-C Full fuction (USB4.0+Display DP2.0 +PD) ×2、 Type-C data only USB 3.2 Gen2 ×1
RJ45 interface	Ethernet Network	2.5Gbps RJ45 ×2、 LED color (1000 Mbps:Yellow, 2500 Mbps: Green)
Button	Power+LED	Power ON/OFF+Indicator Light (LED color: Power On:White, Always on, MS: White, Flash)
Indicated light	White Lamp rings	Yes
Keyboard	Input device	USB、BT Expunable Wired / Wireless Supportive
Mouse	Input device	USB、BT Expunable Wired / Wireless Supportive
Necessary Accessories		
Power adapter	Standard Configuration	19V6.3A /DC5.5mm
Kensington Lock	Standard Configuration	Yes
VESA Mount	Standard Configuration	Yes
Heat-dissipation Module	Standard Configuration	Heat sink with fan
Software Configuration		
Operating System	Operating system version	Windows 11 home

M710

- ⦿ Gaming PC, with independent graphics card
- ⦿ Three performance mode switching: Mute Mode, knowledge mode, performance mode
- ⦿ Support for four-screen display
- ⦿ Quick release and expansion of the lock
- ⦿ Unique shape design



Type	Details	Descriptions
System Physical Standard Configuration		
Product Form	Product Form	Mini PC Box
	Color	Black
	Dimensions	166.7*166.9*160.9mm
	Weight	TBD
	Housing	Plastic+Metal
System Hardware Configuration		
CPU	Type	12th Generation Intel® Core™ i7 Processors Alder Lake
	Speed	i7-12700H, 14-Cores, 20-threads; Speed: 2.7GHz~4.7GHz
GPU	Type	MXM 3070M
RAM	SO-DIMM	16GB, SO-DIMM DDR5 4800MTX2
ROM	eMMC	NA
SSD	M.2	M.2 PCIE NVME 1TB
HDD	SATA	NA
Security	Yes	fTPM
Network Connections		
WIFI	WIFI module	Wi-Fi6/ Bluetooth 5.2
Ethernet Network	Type	10/100/1000/2500Mbps
Interface Configuration		
USB interface	Data transfer supportive	6x USB 3.2
Audio jack	Audio input	2xHeadphone/microphone combo
DC connector	Power	1x DC Φ5.5mm
HDMI interface	Video output	2x HDMI , 1x DP
Expand storage	SD	1x SD Card
Network interface	Ethernet	2x RJ45
VGA interface	Video output	NA
Type-C interface	USB	1x Type-C (Support Thunderbolt 4)
Power	Power button	1xPower button
Keyboard	Input device	USB, BT Expunable Wired / Wireless Supportive
Mouse	Input device	USB, BT Expunable Wired / Wireless Supportive
Necessary Accessories		
Power adapter	Standard Configuration	DC Φ 5.5mm 19V/12A
Software Configuration		
Operating System	Operating system version	Windows 11 PRO

M501

- © Mini-mainframe, simple and light
- © I/O interfaces are rich
- © Support for dual-screen display



Type	Details	Descriptions
System Physical Standard Configuration		
Product Form	Product Form	Mini PC Box
	Color	dark grey
	Dimensions	118*118*41.3mm
	Weight	478g
	Housing	Plastic+Metal
System Hardware Configuration		
CPU	Type	Intel® Core™ i5 Processors-Comet Lake
	Speed	i5-10210U, 4-Cores, 8-threads; Speed: 1.6GHz~4.2GHz
GPU	Type	Intel® UHD Graphics
RAM	SO-DIMM	DDR4 8GB/16GB 2666 MT/s SO-DIMM x2
ROM	eMMC	NA
SSD	M.2	256GB/512GB 2280 PCIe
HDD	SATA	NA
Security	Yes	fTPM
Network Connections		
WIFI	WIFI module	Wi-Fi 5/M.2 2230 AC 9560/ Bluetooth 5.1
Ethernet Network	Type	10/100/1000Mbps
Interface Configuration		
USB interface	Data transfer supportive	2x USB2.0 Type A, 2x USB 3.2 Gen1
Audio jack	Audio input	1xHeadphone/microphone combo
DC connector	Power	1x DC Φ5.5mm power connector
HDMI interface	Video output	2x HDMI 1.4 Type A
Expand storage	SD	NA
Network interface	Ethernet	1x RJ45
VGA interface	Video output	NA
Type-C interface	USB	2x Type-C (1*USB 3.2 Gen 1, 1*USB 2.0)
Power	Power button	LED lits white when power on, and stay solid white
Keyboard	Input device	USB, BT Expuntable Wired / Wireless Supportive
Mouse	Input device	USB, BT Expuntable Wired / Wireless Supportive
Necessary Accessories		
Power adapter	Standard Configuration	DC φ 5.5mm 19V/3.42A 65W
Software Configuration		
Operating System	Operating system version	Windows 11 PRO
Features		
Accessories	VESA	Support

M512

- © 2.5 D glass cover
- © Metal shell, efficient heat dissipation
- © Two gigabit ports



Type	Details	Descriptions
System Physical Standard Configuration		
Product Form	Product Form	Mini PC Box
	Color	Silver
	Dimensions	130*130*47mm
	Weight	TBD
	Housing	Plastic+Metal
System Hardware Configuration		
CPU	Type	Intel Alder Lake/AMD
	Speed	i5 12450H, 8-Cores, 12-threads; Speed: Max 4.40 GHz (12650H/12700H; Alder Lake-N, AMD 5500U 5700U Optional)
GPU	Type	Intel® UHD Graphics
RAM	SO-DIMM	SODIMM*2, DDR4 8GB/16GB, 3200MHz
ROM	eMMC	NA
SSD	M.2	M.2 2280 SSD
HDD	SATA	NA
Network Connections		
WIFI	WIFI module	M.2 WIFI5/WIFI6, BT4.2/ 5.2
Ethernet Network	Type	10/100/1000Mbps
Interface Configuration		
USB interface	Data transfer supportive	2x USB 3.0 former, USB3.2*2 after
Audio jack	Audio input	1xAudio jack
DC connector	Power	1x DC
HDMI interface	Video output	1x HDMI2.0
Expand storage	SD	NA
VGA interface	Video output	NA
Ethernet port	Ethernet	2x RJ45
Type-C interface	USB	1x Type-C (Full-featured)
Power	Power button	1x Power button
Necessary Accessories		
Power adapter	Standard Configuration	DC 19V/6.3A
Software Configuration		
Operating System	Operating system version	Windows 11

M16

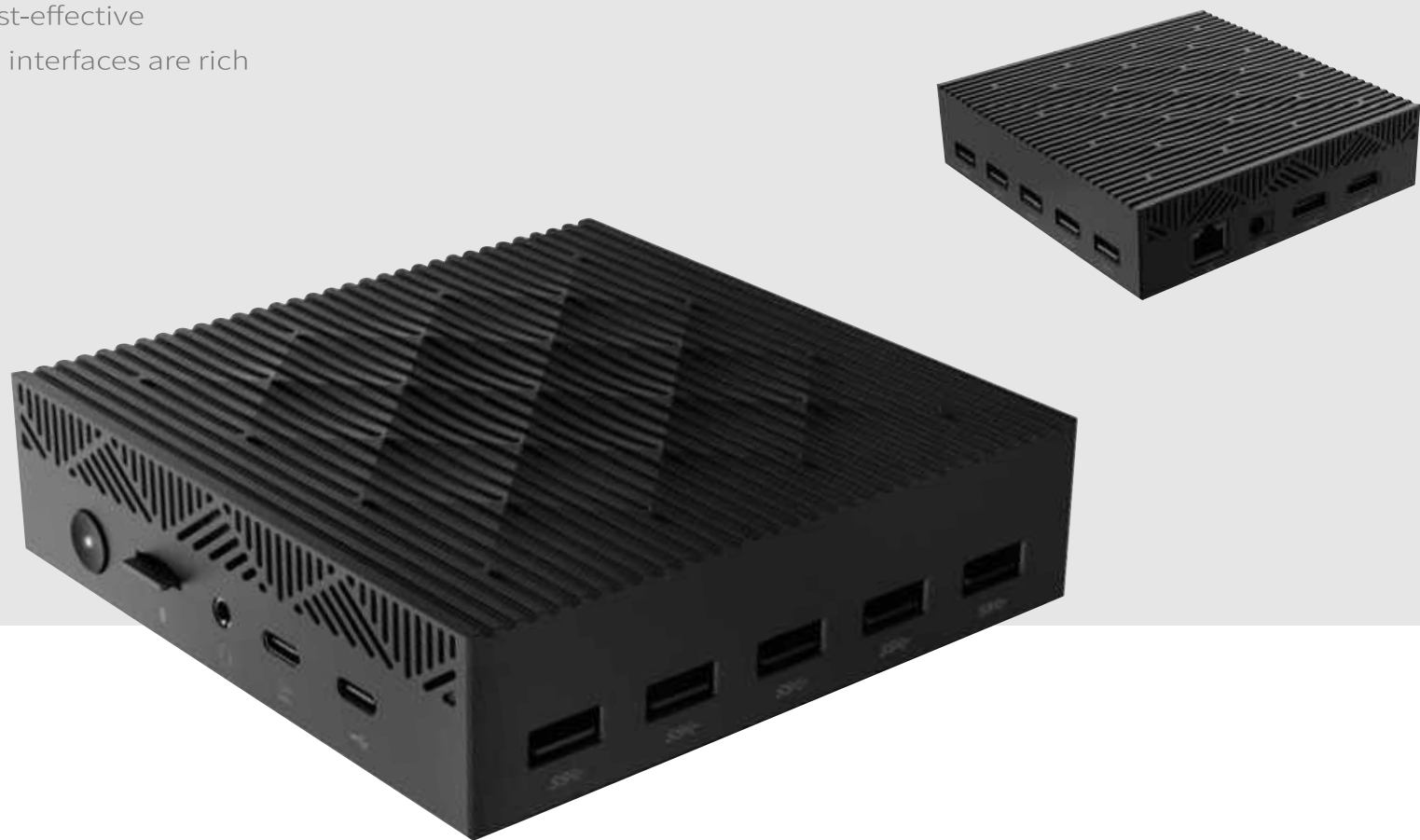
- ◎ Entry-level products
- ◎ Cost-effective
- ◎ I/O interfaces are rich



Type	Details	Descriptions
System Physical Standard Configuration		
Product Form	Product Form	Mini PC Box
	Color	Black
	Dimensions	114.8*125.5*37mm
	Weight	340g
	Housing	Plastic material
System Hardware Configuration		
CPU	Type	Intel Gemini Lake N4020/N5030/J4125
	Speed	J4125 up to 2.7GHz(10W, W/O fans)
GPU	Type	® Intel Ultra HD Graphics 600
RAM	SO-DIMM	DDR4 8GB
SSD	M.2	256GB PCIe
Security	Yes	fTPM
Network Connections		
WIFI	WIFI module	802.11 ac/a/b/g/n (CM251)
Ethernet Network	Type	1000M RJ45
Interface Configuration		
USB interface	Data transfer supportive	USB3.0 x2, USB2.0 ×3
Audio jack	Audio input	headphone/microphone combo x1
DC connector	Power	φ 5.5mm power connector x1
HDMI interface	Video output	HDMI TypeA ×2
Expand storage	Micro SD	TF Card x1
VGA interface	Video output	VGA x1 (hot-swap not supported)
Type-C interface	USB	Data only USB3.0 x1
Keyboard	Input device	USB, BT Expunable Wired / Wireless Supportive
Mouse	Input device	USB, BT Expunable Wired / Wireless Supportive
Necessary Accessories		
Power adapter	Standard Configuration	DC φ 5.5mm*2.1mm 12V/3A
Software Configuration		
Operating System	Operating system version	Windows 11

M302

- ◎ Entry-level products
- ◎ Cost-effective
- ◎ I/O interfaces are rich



Type	Details	Descriptions
System Physical Standard Configuration		
Product Form	Product Form	NovoBox
	Color	Black
	Dimensions	116*116*32mm
	Weight	≈284g
	Housing	Plastic material
System Hardware Configuration		
CPU	Model	Intel N100, 4-Cores, 4threads; Speed: 0.8GHz~3.4GHz 6W
GPU	Type	Intel® UHD Graphics
RAM	SO-DIMM	8GB DDR4 3200 MT/s SO-DIMM×1, up to 16GB
SSD	M.2	256GB 1×M.2-2280 PCIe 3.0×4, up to 2TB
HDD	SATA	-
Security	Yes	fTPM
Network Connections		
WIFI	WIFI module	AC9560 2x2 CNVio Wi-Fi 5 (802.11ac) BT5.1
Ethernet Network	Type	LAN 10/100/1000Mbps
Interface Configuration		
USB interface	Data transfer supportive	USB 3.2 Gen1 Type A ×5
Audio jack	Audio input	3.5mm Combo Jack ×1
DC connector	Power	φ 5.5mm DC power connector ×1
HDMI interface	Video output	HDMI1.4 TypeA ×2
DP interface	Video output	-
Expand storage	Micro SD	Micro TF card up to 512GB ×1
VGA interface	Video output	-
Type-C interface	Type-C	Type-C data only USB2.0 ×1、 Type-C Full fuction (USB3.2 Gen1+Display DP1.2 +PD) ×1
RJ45 interface	Ethernet Network	10/100/1000Mbps RJ45 ×1
Keyboard	Input device	USB、BT Expunable Wired / Wireless Supportive
Mouse	Input device	USB、BT Expunable Wired / Wireless Supportive
Necessary Accessories		
Power adapter	Standard Configuration	12V/3A /DC5.5mm/1.5M/3C
Software Configuration		
Operating System	Operating system version	Windows 11 home

M310

- © Small and convenient, easy to carry
- © Simple appearance, reception rich
- © Cost-effective



Type	Details	Descriptions
System Physical Standard Configuration		
Product Form	Product Form	Mini PC Box
	Color	grey
	Dimensions	112.2*112.2*37mm
	Weight	294g
	Housing	Plastic
System Hardware Configuration		
CPU	Type	Procesador Intel® serie N
	Model	N100, 4-Cores, 4-threads; Speed: Max 3.40 GHz (N5095/N95//N200/N305Optional)
GPU	Type	Intel® UHD Graphics
RAM	SODIMM	SODIMM*1, DDR4 8GB/16GB, 3200MHZ
ROM	eMMC	NA
SSD	M.2	M.2 NGFF SATA+PCIE (2242 *1+2280 *1) 256GB/512GB
HDD	SATA	NA
Network Connections		
WIFI	WIFI module	M.2 WIFI5/WIFI6, BT4.2/ 5.2
Ethernet Network	Type	10/100/1000Mbps
Interface Configuration		
USB interface	Data transfer supportive	2x USB 3.1 former, USB 2.0*2 after
Audio jack	Audio input	1xAudio jack
DC connector	Power	1x DC
HDMI interface	Video output	2x HDMI
Expand storage	SD	NA
VGA interface	Video output	NA
Ethernet port	Ethernet	1x RJ45
Type-C interface	USB	2x Type-C (1xFull-featured,1xDATA)
Power	Power button	1x Power button
Keyboard	Input device	USB, BT Expunable Wired / Wireless Supportive
Mouse	Input device	USB, BT Expunable Wired / Wireless Supportive
Necessary Accessories		
Power adapter	Standard Configuration	DC φ 5.5mm 12V/3A 36W
Software Configuration		
Operating System	Operating system version	Windows 11

04 Desktop computer

ShiHeng X

- Support intel 4th W3400 and w2400 Processors
- Tool-less disassembly, Anti-theft design, Built-in carrying handle
- Bottom power supply, support back cable, support water cooling
- Abundant expandability, screw-free and shockproof hard drive design
- Support 2 14CM front fans and a 12CM rear fan
- Support multi-graphics card installation, and graphics card fixtures
- Front digital interface: USB3.2*2+Type-C (20Gbps)+SD card reader
- Product dimensions: 219(W) × 506(H) × 511MM(L)



Type	Descriptions
CPU	Supports 4th Gen Intel® Xeon® W-3400 and W-2400 Processors (LGA4677)、 Supports 13th Intel® Core® Series Processors
Memory	Supports 8 DIMMs DDR5 ECC, buffered memory, Up to 2TB
SSD	4 x M.2 Sockets, Support PCIe Gen5x4 (128 Gb/s) mode、 1 x U.2 Connector, supports PCIe Gen4x4 (64 Gb/s) mode 128GB/256GB/512GB/1TB/2TB (Optional)
HDD	2 x HDD Expansion Slots、 1TB/2TB/4TB/8TB (Optional)
Graphic	Quadro p4000/5000/6000, RTXA4000/5000/6000, RTX5000/6000Ada (Optional)
PS	ATX 500W/650W/800W/1200W/2000W (Optional)
Rear I/O	2 x Antenna Ports、 1 x Optical SPDIF Out Port、 2 x USB4 Thunderbolt™ 4 Type-C Ports*、 2 x USB 3.2 Gen2 Type-A Ports (10 Gb/s)、 4 x USB 3.2 Gen1 Ports、 3 x RJ-45 LAN Ports、 1 x BIOS Flashback Button、 1 x Line Out Jack (Gold Audio Jack)、 1 x Microphone Input Jack (Gold Audio Jack) * Supports USB PD 3.0 up to 9V@3A (27W) / 5V@3A (15W) charging
Front I/O	1 x Audio Connector (Combo)、 1 x USB 3.2 Gen2x2 Type-C Port (20Gbps)、 2 x USB 3.2 Gen2 Ports (10Gbps)、 1 x SD Card port

ShiHeng T

- Full tower workstation chassis, 43L capacity ,463(L)*220(W)*465(H)mm
- Bottom power supply, support topline
- High scalability, 6 hard disk mounting slots, screw free and hard disk shock proof
- supports multi-fan installation
- Supports ATX/EATX motherboards
- Overhead USB2.0*2+USB3.2*2/ headphone jack + microphone jack



Type	Descriptions
CPU	Intel Core/Xeon Series
Memory	Supports 4/8 DIMMs, DDR4/DDR5, UDIMM/RDIMM, Up to 2TB
SSD	512GB/1TB/2TB NVME M.2 SSD (Optional)
HDD	1TB/2TB/4TB/8TB 3.5 inch HDD (Optional)
Graphic	Quadro p4000/5000/6000、 RTX 4060/4070/4080、 RTX A4000/5000/6000 (Optional)
PS	ATX 500W/650W/800W/1000W/2000W (Optional)
Others	Support Serial port and parallel port expansion
Rear I/O	Six (6) SATA 3.0 Ports supported by Intel PCH (I-SATA 0-5)、 Four (4) SATA 3.0 Ports supported by Intel SCU (S-SATA 0-3) RAID 0, 1, 5, 10、 One (1) Back_panel COM Port、 One (1) Serial Port Header (COM2) 2* USB 2.0 ports on the rear I/O panel、 2* USB 3.0 ports on the rear I/O panel 1 x RJ-45 LAN Port with LED (ACT/LINK LED and SPEED LED)、 HD Audio Jacks: Line in / Front Speaker / Microphone *Depending on the chipset, the rear interface will be different, which has been subject to the actual situation
Front I/O	2 x Audio Connector (Line-in&Mic)、 2 x USB 3.2 Gen1 Ports、 2 x USB 2.0

ShiHeng D60Y

- ◎ Intel notebook high-performance processor solution
- ◎ 7L volume, 278(L)*95(W)*275(H)mm, can stand and lie
- ◎ 6 USB ports on the front panel
- ◎ The front-panel interfaces connect the native interface of the motherboard
- ◎ Concealed air duct design
- ◎ Shock-proof function, quiet design, with safety keyhole
- ◎ Support ultra-thin burning optical drive



Type	Descriptions
CPU	Intel® Alder Lake-U/P/H Series, Intel® Core™ Processor i3-1215U/ i5-1235U/i7-1265U/i5-12450H/i7-12650H/i7-13700H
Memory	2 x DDR4 SO-DIMM sockets, up to 64GB
SSD	2 x PCIE&SATA M.2 Ports, 128G/256G/512G/1T/2T Optional
HDD	1T/2T/4T Optional
Graphic	Integrated graphics
PS	SFX 160W/200W/250W Optional
Others	support optical drive expansion
Rear I/O	1 x 2 Audio Connectors (Audio&Mic) 、 2 x USB2.0 ports、 2 x USB 3.2 Gen2 Ports、 1 x RJ-45 LAN Port 、 2 x D-Sub Port、 1 x HDMI Port
Front I/O	1 x 2 Audio Connectors (Audio&Mic) 、 2 x USB 3.2 Gen1 Type-C Ports 2 x USB 3.2 Gen1 Ports、 2 x USB2.0 ports

ShiHeng D65Y

- ◎ Powered by Intel's next-generation high-performance processors
- ◎ 15L volume, 305(L)*168(W)*385(H)mm, Comes with overhead handle
- ◎ 6 USB ports on the front panel
- ◎ Supports the installation of high-performance graphics cards
- ◎ Support ultra-thin burning optical drive
- ◎ Concealed air duct design
- ◎ Shock-proof function, quiet design, with safety keyhole



Type	Descriptions
CPU	Intel® 12th /13th Core i7/i5/i3/Pentium/Celeron Series Processor, Intel® Core™ Processor i3-12100/ i3-13100/i5-12400/i5-12500/i5-13400/i5-13500/i7-12700/i7-13700
Memory	2 x UDIMM socket, up to 64GB DDR4/DDR5
SSD	1x PCIE&SATA M.2 Ports, 128G/256G/512G/1T/2T Optional
HDD	1T/2T/4T Optional
Graphic	Integrated graphics/AMD R5 220\R7240\RX550 /Nvidia GT1030\ RTX 3060\RTX3070\RTX4060\RTX 4070 Optional
PS	ATX 200W-650W Optional
Others	support optical drive expansion; Expandable serial and parallel port
Rear I/O	1 x PS/2 port、 4 x USB2.0 ports、 2 x USB 3.2 Gen2 Ports、 1 x RJ-45 LAN Port 、 1 x D-Sub Port、 1 x HDMI Port、 1 x DP Port、 1 x 3 Audio Connectors (Audio&Mic&Line in)
Front I/O	1 x 2 Audio Connectors (Audio&Mic) 、 2 x USB 3.2 Gen1 Type-C Ports、 4 x USB 3.2 Gen1 Ports

JunJie B

- ◉ Comes with overhead handle
- ◉ With safety keyhole
- ◉ Expansion card without screw design
- ◉ Support hard disk shockproof function, quiet design
- ◉ Built-in speaker (reserved for installation)
- ◉ 20L+ volume, 392(L)*160(W)*388(H)mm
- ◉ Front USB3.0 x 2+USB2.0 x 2/ Headphone jack + microphone jack



Type	Descriptions
CPU	Intel Celeron/Pentium/Core Series
Memory	2 x UDIMM socket, up to 128GB DDR4/DDR5
SSD	128G/256G/512G/1T/2T Optional
HDD	128G/256G/512G/1T/2T Optional
Graphic	Integrated graphics/AMD R5 220\R7240\RX550 / Nvidia GT1030\RTX 3060\RTX3070\RTX4060\RTX 4070 Optional
PS	ATX 200-650W (Optional)
Others	Support one key restore, data network simultaneous transmission, support Serial port and parallel port expansion
Rear I/O	2 x Antenna Mounting Points、 1 x PS/2 Mouse/Keyboard Port、 1 x D-Sub Port、 1 x HDMI Port、 1 x DisplayPort 1.4 3 x USB 3.2 Gen1 Type-A Ports (Supports ESD Protection)、 1 x USB 3.2 Gen1 Type-C Port (Supports ESD Protection)、 2 x USB 2.0 Ports (Supports ESD Protection)、 1 x RJ-45 LAN Port with LED (ACT/LINK LED and SPEED LED)、 HD Audio Jacks: Line in / Front Speaker / Microphone *Depending on the chipset, the rear interface will be different, which has been subject to the actual situation
Front I/O	2 x Audio Connector (Line-in&Mic) 、 2 x USB 3.2 Gen1 Ports、 2 x USB 2.0 * 2 USB ports on the front are optional

05 Display

GL34UQW-Z2

- © 34 "ultra widescreen curved display, giving you a wider and more comprehensive picture Angle.
- © Multi-color ambient light ring with adjustable high quality metal lifting bracket, both practical and cool



Type	Type Descriptions
Panel	VA
Display Size	34"
Screen	Curved R1000
Panel Type	LED
Backlight Type	ELED
Resolution(H x V)	3440 x 1440
Aspect Ratio	21:9
Pixel Pitch(H x V)	0.23175 x 0.23175mm
Brightness	300cd/m ²
Contrast Ratio	3000:1
Response Time	11ms(5ms with OD, MPRT 1ms)
Display Colors	16.7M
Color Gamut	99% sRGB(CIE 1931)
	72% NTSC(CIE 1931)
View Angles (CR≥10)	178°(H) / 178°(V)
Panel Surface	AG 3H
Max. Display Frequency (Resolution H*V/Fv)	3440 x 1440@100Hz(HDMI)
	3440 x 1440@165Hz(DP)
HDMI	1.4 x 2
DP	1.2 x 1
Audio Out	NA
Speaker	NA
Power Range	DC 12V/4A
Working consumption	≤48W
Standby consumption	≤0.5W

GL34UQW-Z3

- ◎ 1100R super curved surface gaming display ultra-high resolution: 2560*1440 ~ 3840x2160
- ◎ Ultra-high refresh rate: 100Hz ~ 240Hz and 1msMPRT response speed give you a high-speed and smooth gaming experience.
- ◎ AMD FreeSync anti-tear technology plus eye filter blue screen super safe.
- ◎ Multi-color atmosphere lighting ring with adjustable high quality metal lifting bracket, both practical and cool.



Type	TypeDescriptions
Panel	VA
Display Size	34"
Screen	Curved R1500
Panel Type	LED
Backlight Type	ELED
Resolution(H x V)	3440 x 1440
Aspect Ratio	21:9
Pixel Pitch(H x V)	0.23175 x 0.23175mm
Brightness	300cd/m ²
Contrast Ratio	3000:1
Response Time	11ms(5ms with OD, MPRT 1ms)
Display Colors	16.7M
Color Gamut	99% sRGB(CIE 1931)
	72% NTSC(CIE 1931)
View Angles (CR≥10)	178°(H) / 178°(V)
Panel Surface	AG 3H
Max. Display Frequency (Resolution H*V/Fv)	3440 x 1440@100Hz(HDMI)
	3440 x 1440@165Hz(DP)
HDMI	1.4 x 2
DP	1.2 x 1
Audio Out	NA
Speaker	NA
Power Range	DC 12V/4A
Working consumption	≤48W
Standby consumption	≤0.5W

GL315Q-D1

- © As a 1500R curved esports display, this mold can do 1K/165HZ/240HZ, 2K/165HZ/240HZ
- © support PIP/PBP intelligent split screen, 1msMPRT response speed, AMD FreeSync anti-tear technology
- © support HDR400, eye protection blue light filter



Type	TypeDescriptions
Panel	VA
Display Size	31.5"
Screen	Curved R1500
Panel Type	LED
Backlight Type	ELED
Resolution(H x V)	2560 x 1440
Aspect Ratio	16:9
Pixel Pitch(H x V)	0.0908 x 0.2724mm
Brightness	350cd/m ²
Contrast Ratio	3000:1
Response Time	MPRT 1ms
Display Colors	16.7M
Color Gamut	105% sRGB(CIE 1931)
	75% NTSC(CIE 1931)
View Angles (CR≥10)	178°(H) / 178°(V)
Panel Surface	AG 3H
Max. Display Frequency (Resolution H*V/Fv)	2560 x 1440@120HZ(HDMI)
	2560 x 1440@165HZ(DP)
HDMI	2.0 x 2
DP	1.4 x 2
Audio Out	YES
Speaker	NA
Power Range	DC 12V/5A
Working consumption	≤60W
Standby consumption	≤0.5W

GL315U-Z1

- © 31.5 inch large screen flat high display, ultra-high resolution: 1920x1080 ~ 3840x2160, Ultra-high refresh rate: 60Hz ~ 240Hz and 1msMPRT response speed give you a high-speed and smooth gaming experience.
- © AMD FreeSync anti-tear technology plus eye filter blue screen super safe.
- © E-sports style appearance with a design sense of metal fixed bracket, fashion and stability at the same time.



Type	TypeDescriptions
Panel	VA
Display Size	31.5"
Screen	Flat
Panel Type	LED
Backlight Type	ELED
Resolution(H x V)	3840 x 2160
Aspect Ratio	16:9
Pixel Pitch(H x V)	0.18159 x 0.18159mm
Brightness	300cd/m ²
Contrast Ratio	3000:1
Response Time	20ms(10ms with OD, MPRT 1ms)
Display Colors	1.07G
Color Gamut	99% sRGB(CIE 1931)
	72% NTSC(CIE 1931)
View Angles (CR≥10)	178°(H) / 178°(V)
Panel Surface	AG 3H
Max. Display Frequency (Resolution H*V/Fv)	3840 x 2160@60Hz(HDMI)
	3840 x 2160@60Hz(DP)
HDMI	2.0 x 1
DP	1.4 x 1
Audio Out	NA
Speaker	NA
Power Range	DC 12V/4A
Working consumption	≤48W
Standby consumption	≤0.5W

ML215F-S3

© mobile smart screen, 21.5-inch wireless touch computer tablet Android system display, any scene, fitness, live broadcast, kitchen, bedroom and other random switch, life is more exciting



Type	TypeDescriptions
Panel	IPS
Display Size	21.5"
Panel Type	LED
Backlight Type	ELED
Resolution(H x V)	1920 x 1080
Aspect Ratio	16:9
Pixel Pitch(H x V)	0.0831*0.241mm
Brightness	300~350cd/m ²
Contrast Ratio	3000:1
Response Time	25ms(GTG)
Display Colors	16.7M
Color Gamut	100% sRGB(CIE 1931)
	72% NTSC(CIE 1931)
View Angles (CR≥10)	178°(H) / 178°(V)
Panel Surface	GFF 3H
Max. Display Frequency (Resolution H*V/Fv)	1920 x 1080@60Hz(HDMI 2.0)
CPU	2*Cortex-A75 up to 2.0Ghz
	6*Cortex-A55 up to 1.8Ghz(MT6769)
GPU	ARM Mail G52 up to 820Mhz
OS	Android 12
Memory	4GB/8GB
eMMC Flash	64GB/128GB
Wifi	2.4GHz+5GHz 802.11 a/b/g/n/ac
BlueTooth	5.0 DR/EDR/BLE
I/O Ports	DC + Type-C + HDMI + 1x USB2.0-A + AUDIO OUT
Speaker	5W x 2
10-Point Touch	Yes
Power Range	DC 12V/4A
Working consumption	≤23W
Standby consumption	≤5W

PL14FD-S2

© 14-inch aluminum alloy ultra-thin metal appearance double screen three screen portable display, high brightness and high color gamut (400 brightness, 100% sRGB), ultra-narrow border, applied to the laptop with the same screen expansion, is your office, financial efficiency of the art



Type	Type Descriptions
Panel	IPS
Display Size	14"
Panel Type	LED
Backlight Type	ELED
Resolution(H x V)	1920 x 1200
Aspect Ratio	16:10
Pixel Pitch(H x V)	0.15708 x 0.15708mm
Brightness	400cd/m ²
Contrast Ratio	1500:1
Response Time	25ms
Display Colors	16.7M
Color Gamut	100% sRGB(CIE 1931)
	72% NTSC(CIE 1931)
View Angles (CR≥10)	178°(H) / 178°(V)
Panel Surface	AG 3H
Max. Display Frequency (Resolution H*V/Fv)	1920 x 1080@60HZ(HDMI)
	1920 x 1080@60HZ(Type C)
10-Point Touch	N/A
Wireless Module	N/A
Mini HDMI	2.0 x 1
Type C	3.1 x 2
Audio Out	N/A
Speaker	N/A
Power Range	AC 100-240V 50/60Hz
Working consumption	≤8W
Standby consumption	≤0.5W

PL156F-S1

- © 15.6-inch aluminum alloy ultra-thin portable display, with a bracket to switch between horizontal and vertical screens, support wired and wireless connection;
- © Can be mobile phone projection screen, laptop desktop console expansion secondary screen, can also connect game consoles PS, XBOX, Switch, set-top box and other devices, for your work life to provide more fun



Type	TypeDescriptions
Panel	IPS
Display Size	15.6"
Panel Type	LED
Backlight Type	ELED
Resolution(H x V)	1920 x 1080
Aspect Ratio	16:9
Pixel Pitch(H x V)	0.1617 x 0.1617mm
Brightness	230cd/m ²
Contrast Ratio	800:1
Response Time	30ms
Display Colors	16.7M
Color Gamut	72% sRGB(CIE 1931)
	45% NTSC(CIE 1931)
View Angles (CR≥10)	170°(H) / 170°(V)
Panel Surface	AG 3H
Max. Display Frequency (Resolution H*V/Fv)	1920 x 1080@60HZ(HDMI)
	1920 x 1080@60HZ(Type C)
10-Point Touch	Option
Wireless Module	Option
Mini HDMI	1.4 x 1
Type C	3.1 x 2
Audio Out	YES
Speaker	1W x 1(8Ω)
Power Range	AC 100-240V 50/60Hz
Working consumption	≤8W
Standby consumption	≤0.5W

VL27Q-C1

- TV + esports display in one machine!
- Built-in Google intelligent operating system, as a smart screen display terminal, no PC host, boot immediately
- 2K, 165Hz high brush display, support VRR variable refresh rate function, ALLM automatic low latency mode
- diversified display terminal, support a variety of mainstream screen projection modes
- Supports the KVM function and Type-C 65W reverse fast charge,



Type	TypeDescriptions
Panel	IPS
Display Size	27"
Panel Type	LED
Backlight Type	ELED
Resolution(H x V)	2560 x 1440
Aspect Ratio	16:9
Pixel Pitch(H x V)	0.2331 x 0.2331mm
Brightness	250cd/m ²
Contrast Ratio	3000:1
Response Time	5ms(GTG,with OD)
Display Colors	16.7M
Color Gamut	99% sRGB(CIE 1931)
	72% NTSC(CIE 1931)
View Angles (CR≥10)	178°(H) / 178°(V)
Panel Surface	AG 3H
Max. Display Frequency (Resolution H*V/Fv)	2560 x 1440@144Hz(HDMI 2.0)
	2560 x 1440@165Hz(DP 1.4)
	2560 x 1440 165Hz(Type-C)
CPU	ARM Cortex Advanced quad-core, CA55, 1.8GHz(RTD2851F)
GPU	ARM Advanced Multi-Core Mali, G31 MP2, 950MHz
OS	Android 14
Memory	2GB
eMMC Flash	8GB/16GB
Wifi	2.4GHz & 5GHz dual band, IEEE 802.11 a/b/g/n/ac
BlueTooth	Bluetooth2.1+EDR/4.2/5.0
I/O Ports	DC + RJ45 + DP + Type-C(PD 65W) + HDMI + 2x USB2.0-A + AUDIO OUT
Speaker	3W x 2
Ambient Lighting	RGB LED
Power Range	DC 24V/6.35A
Working consumption	≤152.4W
Standby consumption	≤0.5W

06 Tablet

WM126013S

© oled screens are thinner and more colorful



Type	Details	Descriptions
Features	OS	Android 14
	Size	284.7x182.9x5.8mm
LCD	Physical size	12.6 inches
	Resolution	Oled 2560X1600, 600nits
Touchscreen	Touch Panel	Oncell
	Type	MT8781(G99)
CPU	Frequency	Octa Core, 2x A76@2.2GHz + 6x A55@2.0GHz
	Process	6nm
Storage	RAM	8GB
	ROM	128GB
Battery	Li-polymer Battery	3.8V/10000mAh
Camera	Front	5MP
	Rear	13 MP AF
Speaker	Internal	8Ω/1W *4
Connectivity	Wifi	Wifi 5
	Bluetooth	BT5.2
Modem Features	Internal	N/A
Adapter	Standard	9V2A PD 18W
Pogo pin	5 point	Support

WM119712S

© All metal WiFi network connection is smoother



Type	Details	Descriptions
Features	OS	Android 14
	Size	279x174.5x7.7mm
LCD	Physical size	11.97 inches
	Resolution	IPS 1200*2000
Touchscreen	Touch Panel	Incell
CPU	Type	MT8781(G99)
	Frequency	Octa Core, 2x A76@2.2GHz + 6x A55@2.0GHz
	Process	6nm
Storage	RAM	6GB
	ROM	128GB
Battery	Li-polymer Battery	3.8V/10000mAh
Camera	Front	8 MP
	Rear	13 MP AF
Speaker	Internal	8Ω/1W *4
Connectivity	Wifi	Wifi 5
	Bluetooth	BT5.2
Modem Features	Internal	N/A
Adapter	Standard	9V2A PD 18W
Pogo pin	5 point	Support

LM109511P

© 5G tablet to enjoy ultra-fast network experience



Type	Details	Descriptions
Features	OS	Android 14
	Size	258.5x170x8.5mm
LCD	Physical size	10.95 inches
	Resolution	IPS 1200*1920
Touchscreen	Touch Panel	Incell
CPU	Type	MT8797(1300T)
	Frequency	Octa Core, 1x A78@2.6GHz + 3x A78@2.6GHz + 4x A55@2.0GHz
	Process	6nm
Storage	RAM	6GB
	ROM	128GB
Battery	Li-polymer Battery	3.8V/8000mAh
Camera	Front	8 MP max
	Rear	13MP AF+5MP FF
Speaker	Internal	8Ω/1.5W *2
Connectivity	Wifi	Wifi 6
	Bluetooth	BT5.3
Modem Features	Internal	5G/4G/3G/2G
Adapter	Standard	11V3A PD 18W
Pogo pin	5 point	Support

07 Projector

U1

- ◎ Three-colour Laser
- ◎ 0.18 Throw ratio
- ◎ 600 ANSI
- ◎ Support HDR10
- ◎ 2*5W



Title	SPEC
Model number	U1
Projection type	DLP 0.23"
Chipset	H713 A53*4 1.0GHz
Brughtness(Ansi lumens)	600ANSI
Native resolution	1920*1080
Operating System	Android11
Projection size	40"~120"
Throw ratio	0.18:1
Uniformity	95%
Additional WiFi Connnection	2.4G+5G
Additional Bluetooth Connection	BT5.0
Speaker output	2*5W
I/O	1*USB2.0
	1*DC In
	2*HDMI 1.4
	1*RJ45
Focus	Motorized focus adjustment by remote
Image correction(keystone)	Automatic trapezoidal correction
Special funtion	Screen mirroring
	HDR10
Noise level	35DB
Power consumption	50W
Optical engine type	100%Sealed optical engine (dust- free)
Unit dimension	309*186*68mm
Accessories(Standard)	Power Adapter, Remote control, User manual
Accessories(Optional)	HDMI cable, Projection screen

X1

- ◎ laser light source, 2500ANSI
- ◎ Automatic focus, Automatic obstacle avoidance, Automatic trapezoidal correction, Automatic screen alignment Support HDR10
- ◎ 2*12W Speaker
- ◎ 26DB, ultra-silent



Title	SPEC
Model number	X1
Projection type	DLP 0.47
Chipset	MT9669
Brughtness(Ansi lumens)	2500ANSI
Native resolution	1920*1080p, Compatible 4K Decoding
Operating System	Android 9.0
Projection size	30"~300"
Throw ratio	1.27:1
Uniformity	95%
Additional WiFi Connnection	2.4G+5G
Additional Bluetooth Connection	BT5.2
Speaker output	2*12W
I/O	2*USB2.0
	1*HDMI2.1、1*HDMI2.0 (eARC)
	1*DC In
	RJ45
	S/PDIF*1
Focus	Automatic focus by front TOF camera
Image correction(keystone)	Automatic trapezoidal correction
Special funtion	Screen mirroring
	Automatic obstacle avoidance
	Automatic screen alignment
	HDR10
Noise level	Bluetooth audio
Power adaptor	26DB
Power consumption	DC IN 19V 7.89A
Optical engine type	150W
Unit dimension	100%Sealed optical engine (dust- free)
Accessories(Standard)	224*216*158mm
Accessories(Optional)	Power adaptor, Remote control, User manual
	HDMI cable, Projection screen

Z1

- ◎ 450ANSI
- ◎ Automatic focus、Automatic obstacle avoidance、Automatic trapezoidal correction、Automatic screen alignment
- ◎ 100%Sealed optical engine (dust- free)
- ◎ Bluetooth audio
- ◎ 2*5W



Title	SPEC
Model number	Z1
Projection type	LCD4.45"
Chipset	MT9269
Brughtness(Ansi lumens)	500ANSI
Native resolution	1920*1080
Operating System	Android 9.0
Projection size	35"-180"
Throw ratio	1.25:1
Uniformity	75%
Additional WiFi Connnection	2.4G+5G
Additional Bluetooth Connection	BT5.0
Speaker output	2*5W
I/O	1*USB2.0
	1*DC In
	1*HDMI In
	1*3.5mm Headphone
Focus	Automatic focus by front camera
Image correction(keystone)	Automatic trapezoidal correction
	Automatic obstacle avoidance
	Automatic screen alignment
Special funtion	HDR10
	Screen mirroring
Noise level	30DB
Power consumption	120W
Optical engine type	100%Sealed optical engine (dust- free)
Unit dimension	202*133*213mm
Accessories(Standard)	Power adaptor, Remote control, User manual
Accessories(Optional)	HDMI cable, Projection screen

Happy10C

- ◎ 100%Sealed optical engine (dust- free) 、 low-noise
- ◎ Automatic focus、Automatic Vertical +/- 15 degrees correction
- ◎ Elegant appearance,two color options
- ◎ WIFI6、2.4G+5G、Screen mirroring
- ◎ Bluetooth audio



Title	SPEC
Model number	Happy10C
Projection type	LCD 2.69"
Chipset	MT8163
Brughtness(Ansi lumens)	200ANSI
Native resolution	1280*720,Compatible 1080 Decoding
Operating System	Android 7.0
Projection size	40"~120"
Throw ratio	1.3:1
Uniformity	75%
Additional WiFi Connnection	2.4G+5G
Additional Bluetooth Connection	BT4.0
Speaker output	2*3W
I/O	2*USB 2.0
	1*HDMI 1.4(ARC)
	1*3.5mm Headphone
	1*AC
Focus	Automatic focus by front camera
Image correction(keystone)	Automatic Vertical +/- 15 degrees correction
Special funtion	Screen mirroring
	Automatic obstacle avoidance
	Automatic screen alignment
	Bluetooth audio
Noise level	30DB
Power consumption	65W
Optical engine type	100%Sealed optical engine (dust- free)
Unit dimension	154*126*211mm
Accessories(Standard)	Power Cable, Remote control, User manual
Accessories(Optional)	HDMI cable, Projection screen

P10

- ◎ 450ANSI
- ◎ Automatic focus、Automatic obstacle avoidance、Automatic trapezoidal correction、Automatic screen alignment
- ◎ 100%Sealed optical engine (dust- free)
- ◎ Bluetooth audio
- ◎ 2*5W



Title	SPEC
Model number	P10
Projection type	LCD2.69"
Chipset	H713
Brughtness(Ansi lumens)	130ANSI
Native resolution	1280*720
Operating System	Multi-media/Android11
Projection size	40"~120"
Throw ratio	1.37:1
Uniformity	70%
Additional WiFi Connnection	2.4G+5G
Additional Bluetooth Connection	BT5.0
Speaker output	1*3W
I/O	1*USB2.0
	1*AC In
	1*HDMI In
	1*3.5mm Headphone
Focus	Manual
Image correction(keystone)	Automatic Vertical +/- 15 degrees correction
Special funtion	Screen mirroring
Noise level	35DB
Power consumption	60W
Optical engine type	Open optical engine
Unit dimension	Ø100.8*188mm
Accessories(Standard)	Power Cable, Remote control, User manual
Accessories(Optional)	HDMI cable, Projection screen

P20

- ◎ Screen mirroring
- ◎ 1280*720p, Compatible 1080p Decoding
- ◎ Elegant appearance
- ◎ WIFI5, 2.4G+5G
- ◎ BT5.0



Title	SPEC
Model number	P2
Projection type	LCD2.69"
Chipset	RDA6710
Brughtness(Ansi lumens)	100ANSI
Native resolution	1280*720p,Compatible 1080p Decoding
Operating System	Multi-media
Projection size	26"~120"
Throw ratio	1.26:1
Uniformity	70%
Additional WiFi Connnection	2.4G+5G
Additional Bluetooth Connection	BT5.0
Speaker output	1*3W
I/O	1*USB2.0
	1*AC In
	1*HDMI In
	1*3.5mm Headphone
Focus	Manual
Image correction(keystone)	Manual
Special funtion	Screen mirroring
Noise level	35DB
Power consumption	DC IN 21V 2.28A
Optical engine type	43W
Unit dimension	Open optical engine
Accessories(Standard)	145*120*69mm
Accessories(Optional)	Power Adapter, Remote control, User manual HDMI cable, Projection screen