



陕西信鸿磁业科技有限公司

SHAANXI SHINHOM ENTERPRISE CO.,LTD

To present you with a better picture of our company and strengthen the confidence and willingness towards a co-operation between two parties. We hope that through this round of meeting and talks, We can open a long term vista for sincere cooperation for mutual benefit on a reciprocal basis.



CONTENTS



公司简介

COMPANY PROFILE



主要产品

MAIN PRODUCTS



组织体系

ORGANIZATIONAL
CHART



市场发展

MARKET DEVELOPMENT



COMPANY PROFILE

01

公司简介

COMPANY PROFILE





COMPANY PROFILE

SHAANXI SHINHOM ENTERPRISE CO.,LTD

COMPANY PROFILE

Historic Evolution

Founded in 1998, Shinhom has always taken quality and service as priority. After 22 years' development, we R&D more than 200 product series of magnetic components that have been exported to 40 countries.

Specializing in producing magnetic components and supplying OEM service, we have built pleasant business relations with many corporations in Germany, U.K, USA, Canada, Brazil, New Zealand, France, Italy, Japan, Korea, Russia, Ukraine, Australia, Czech, South Africa, India etc.

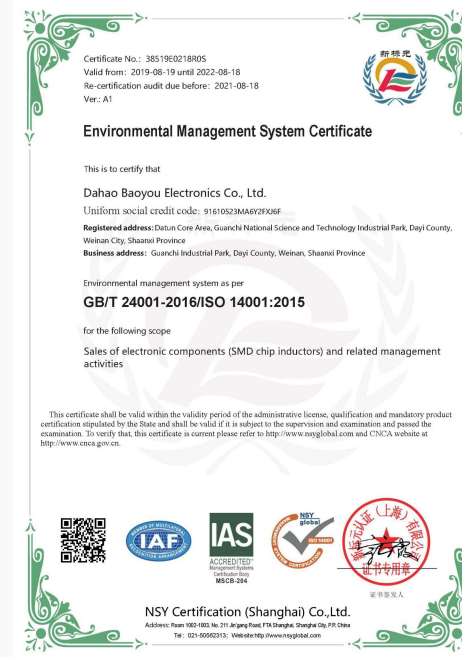


SHAANXI SHINHOM ENTERPRISE CO.,LTD

SHAANXI SHINHOM ENTERPRISE CO.,LTD

Company Introduction

- ShaanXi Shinhom Enterprise Co.,Ltd is one of export-oriented enterprises, business volume taking up more than 80%.
- We receive orders from more than 800 customers around the world, mainly from the USA, Canada, Russia, Brazil, Germany, UK and other EU Countries.
- Honeywell and Tesla has cooperated with us in transformer and inductors project.





ORGANIZATIONAL CHART

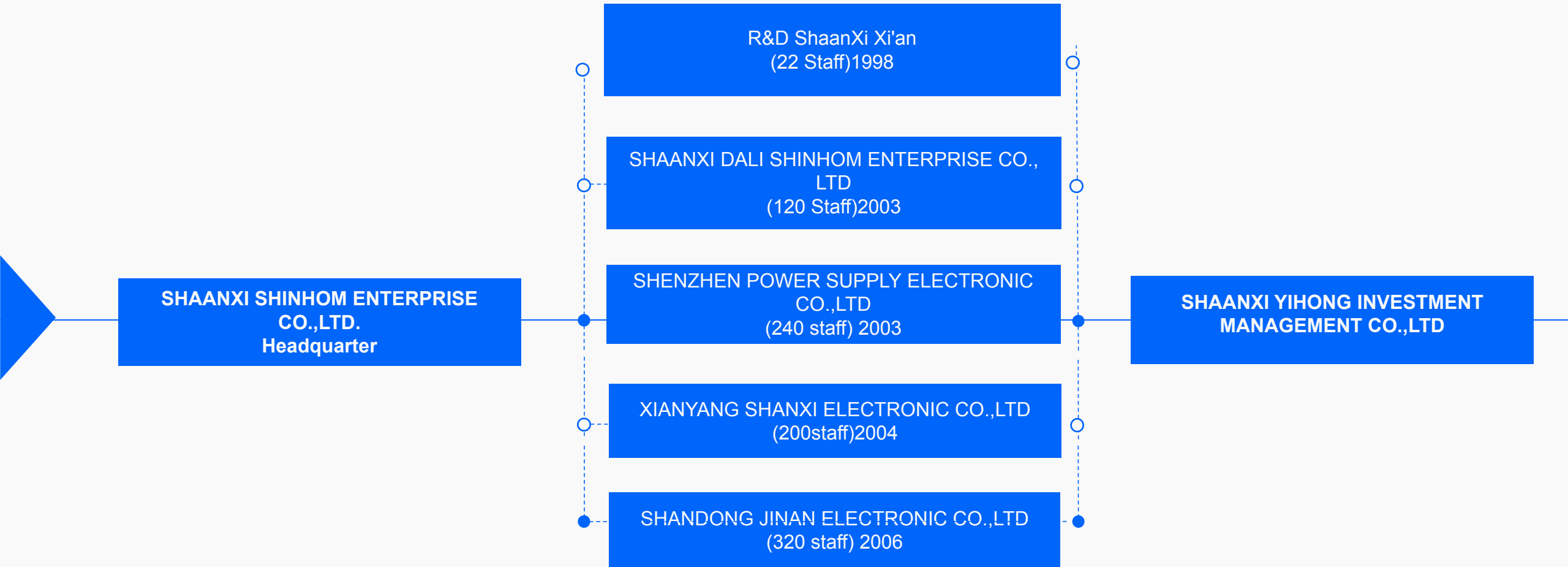
02 组织体系

ORGANIZATIONAL CHART





ORGANIZATIONAL CHART



Company Headquarter In Xi'an City

- Headquarter: 32 employees, including 8 engineers in R&D team, 20 sales people
- Sales, R&D, marketing, purchasing, order management, after-sales service, financial management
- Four factory have over Workers: about 650 permanent workers and 230 temporary workers



Core COMPETENCE

- 30 years' experience in this field benefiting to help customer design and solve technical questions.
- Located in mid-western China, we enjoy relatively low cost labors.
- Customer-focused service, long-term cooperation spirit, careful and responsible attitude.





MAIN PRODUCTS

03 主要产品

MAIN PRODUCTS



The Manufacturing Plant In DaLi

- Established in 2003
- Approximately 120 employees.
- 8600m² total area
- Inductors as below



- Core as below



The Branch Plant2 In Xianyang City

- Established in 2004
- Approximately 200 employees
- 4000m² total area
- Choke coils, transformers, CT
- Inductors as below





MAIN PRODUCTS

The Branch Plant3 In ZhongShan City



RF transformers



Microwave



Common mode Inductors





MAIN PRODUCTS

The Branch Plant4 In ShanDong City



Current Transformer



Current Sensor





MAIN PRODUCTS

The Branch Plant5 In Dongguan Qing City



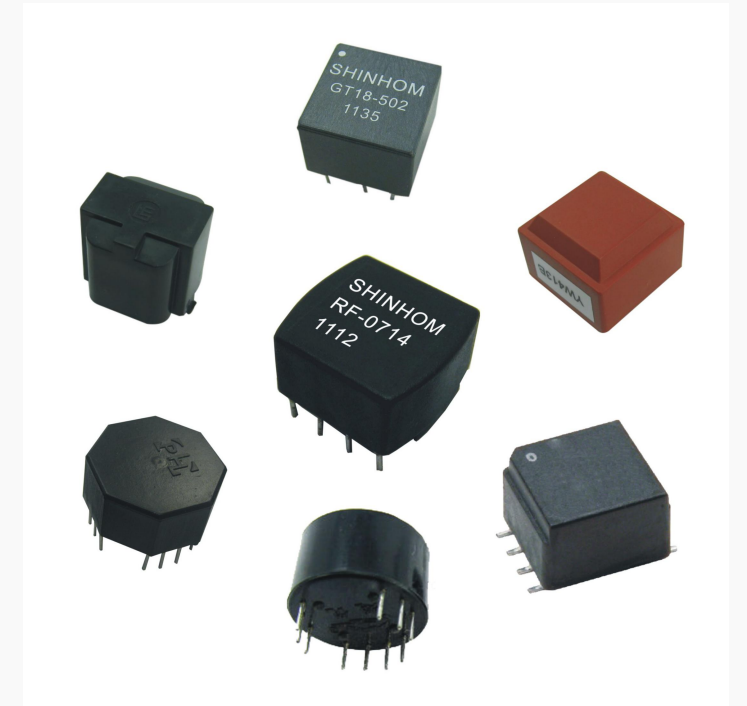
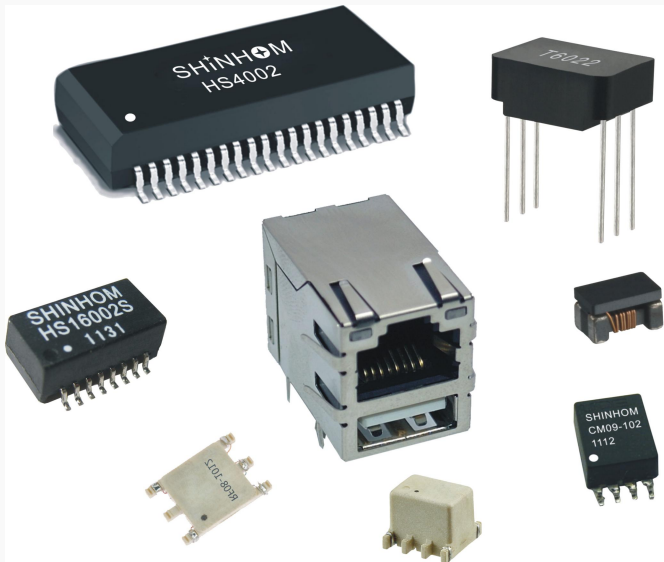
LAN transformers



DSL Transformer



Gate driver Transformer





MAIN PRODUCTS

The Branch Plant6 In Dongguan Qing City



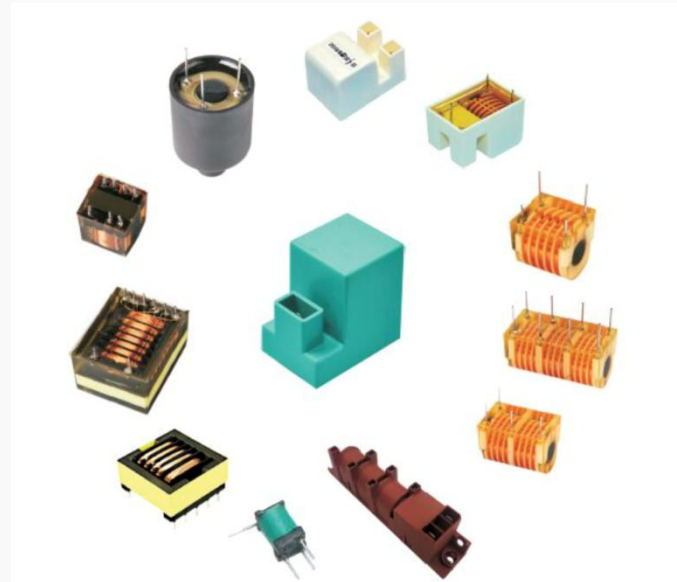
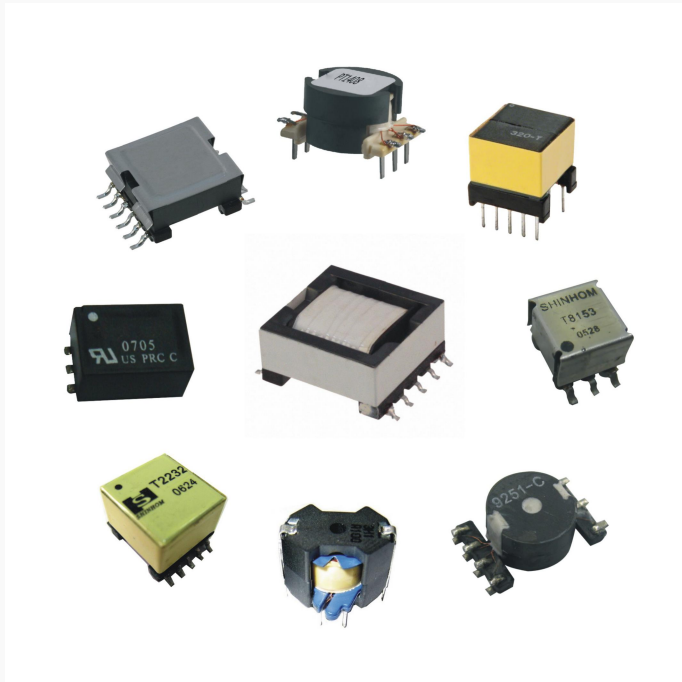
POE trsnformers



Ignition coil



Reactor





MARKET DEVELOPMENT

04 市场发展

MARKET DEVELOPMENT



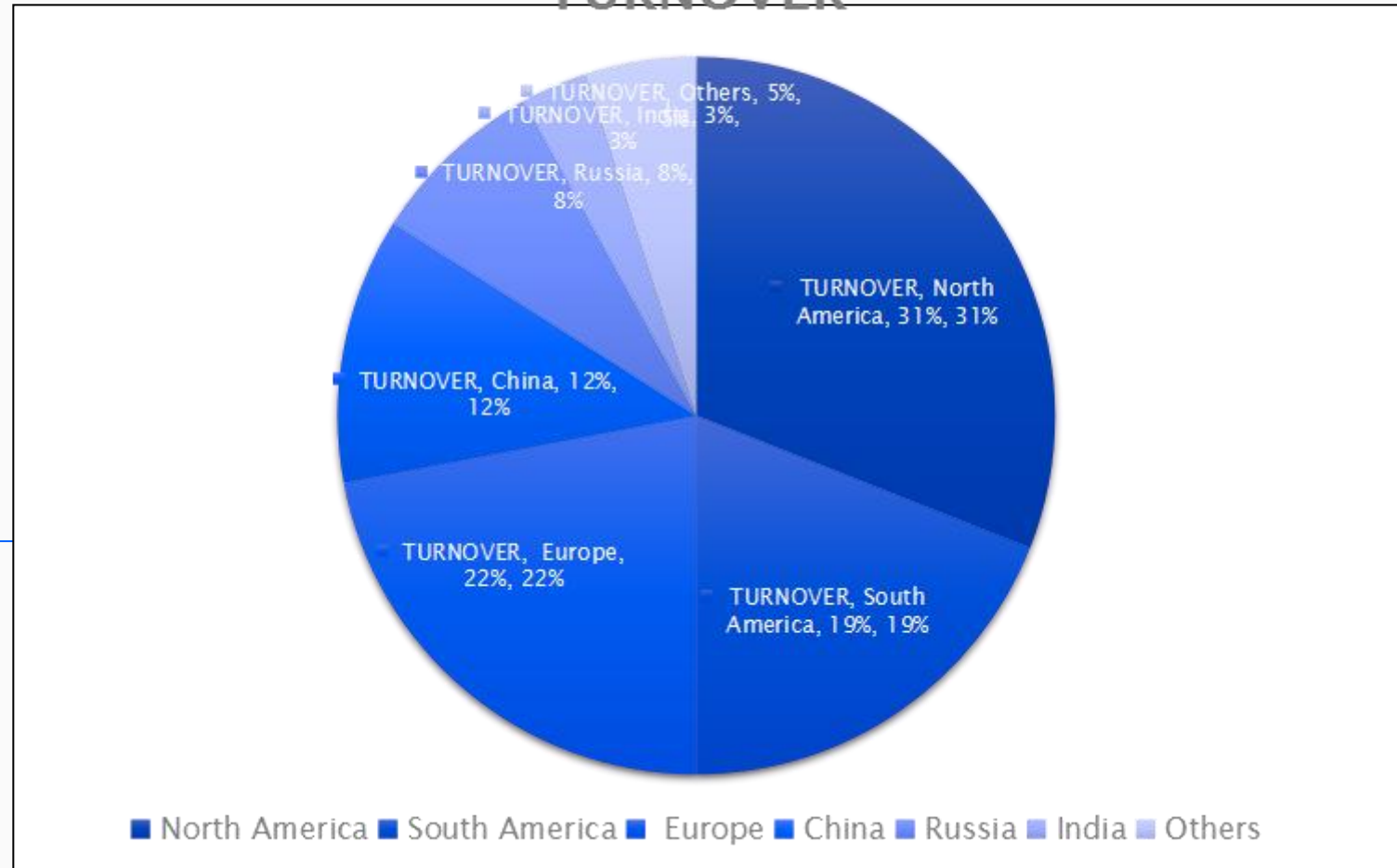


MARKET DISTRIBUTION

- North America
- South America
- Europe
- China
- Russia
- India

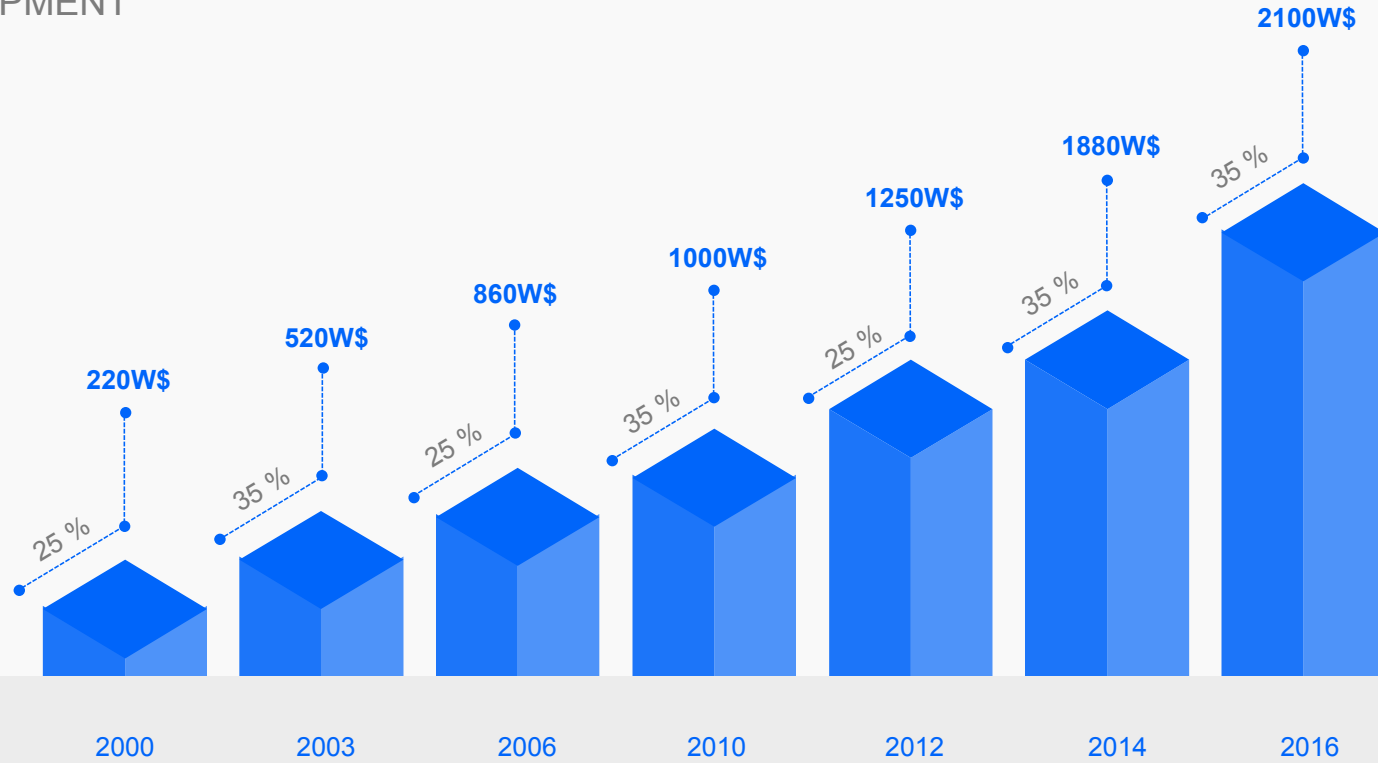
TURNOVER DISTRIBUTION

TURNOVER





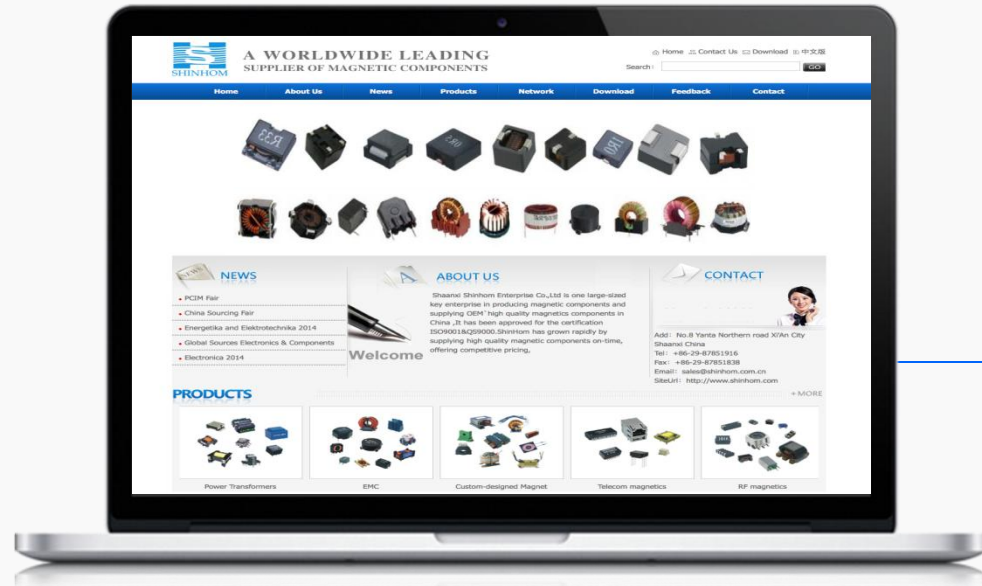
MARKET DEVELOPMENT



ANNUAL TURNOVER FIGURES



MARKET DEVELOPMENT



Website

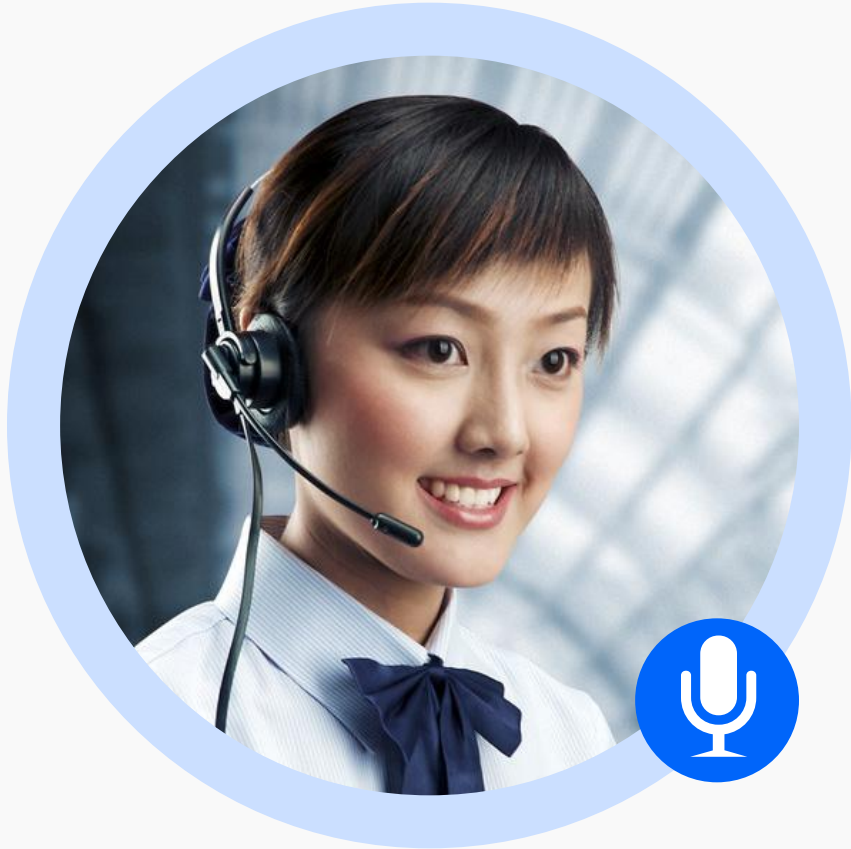


<http://www.shinhom.com>



<http://www.globalsources.com/shinhom.co>

SHAANXI SHINHOM ENTERPRISE CO.,LTD



CONTACT US

- **ADD:** *Commercial Plaza , No.8, Yan Ta Northern Road, Xi'an Shaanxi Pro. China.*
- **TEL:** *(29)-87851838 87851916*
- **FAX:** *(29)-87851840*
- <http://www.shinhom.com>
- <http://www.globalsources.com/shinhom.co>

Thank You

It is Shinhom surviving lifeline to seek for customer satisfaction, which can be gained by a combination of superior quality, reasonable delivery time, competitive prices as well as customer-oriented services, so as to ensure that the turned out products measure up to customers' demands .

