



Guangdong SCCdisplay Technology Co.,Ltd.

**Focusing on Advanced Display
Technologies • Empowering Global Smart Devices**

<https://www.sccddisplay.com>



CONTENTS

01 Corporate
Fundamentals

02 Core
Competency

03 Production
and Quality

04 Market and
Applications

05 Future
Outlook

Company Profile

Guangdong SCCdisplay Optoelectronics Technology Co., Ltd. (SCCdisplay) was strategically established in 2019 by Shenzhen Jiaxian Electronics (founded in 2008) as a high-tech enterprise specializing in advanced display technologies. With an R&D center in Zhongshan and a production base in Zhuzhou, the company employs over 500 staff and boasts a monthly production capacity of 5 million glass pairs. The company holds ISO 9001 and EU RoHS certifications, along with multiple LCD patents. Its core products encompass monochrome LCDs, TFT LCDs, and OLEDs, serving global clients across industrial control, consumer electronics, and other sectors.



Display Device R&D and Manufacturing

Focusing on the R&D of monochrome LCD, TFT LCD, OLED, and other display devices, we offer diverse packaging options including COG, COB, SMT, and pin-type configurations. We deliver highly stable, low-power display solutions that comprehensively meet the demands of multiple application scenarios, such as industrial instruments and smart wearables.



Customized Display Solutions

We provide integrated services from design to mass production tailored to specific customer requirements, supporting interface and backlight color customization to ensure product compatibility and reliability in medical, automotive, and other fields.

Development History



Core Business Segments

01

Monochrome LCD display

Character sets, graphic dot matrix sets, Chinese character font sets, suitable for industrial control and instrumentation

02

TFT LCD display

Resolutions ranging from 240×320 to 480×800, covering screen sizes from 0.96 to 10.1 inches, with touch functionality support.

03

OLED display

0.96 to 2.4 inches, self-illuminating, high contrast, compatible with portable smart devices

04

LCM Display Module

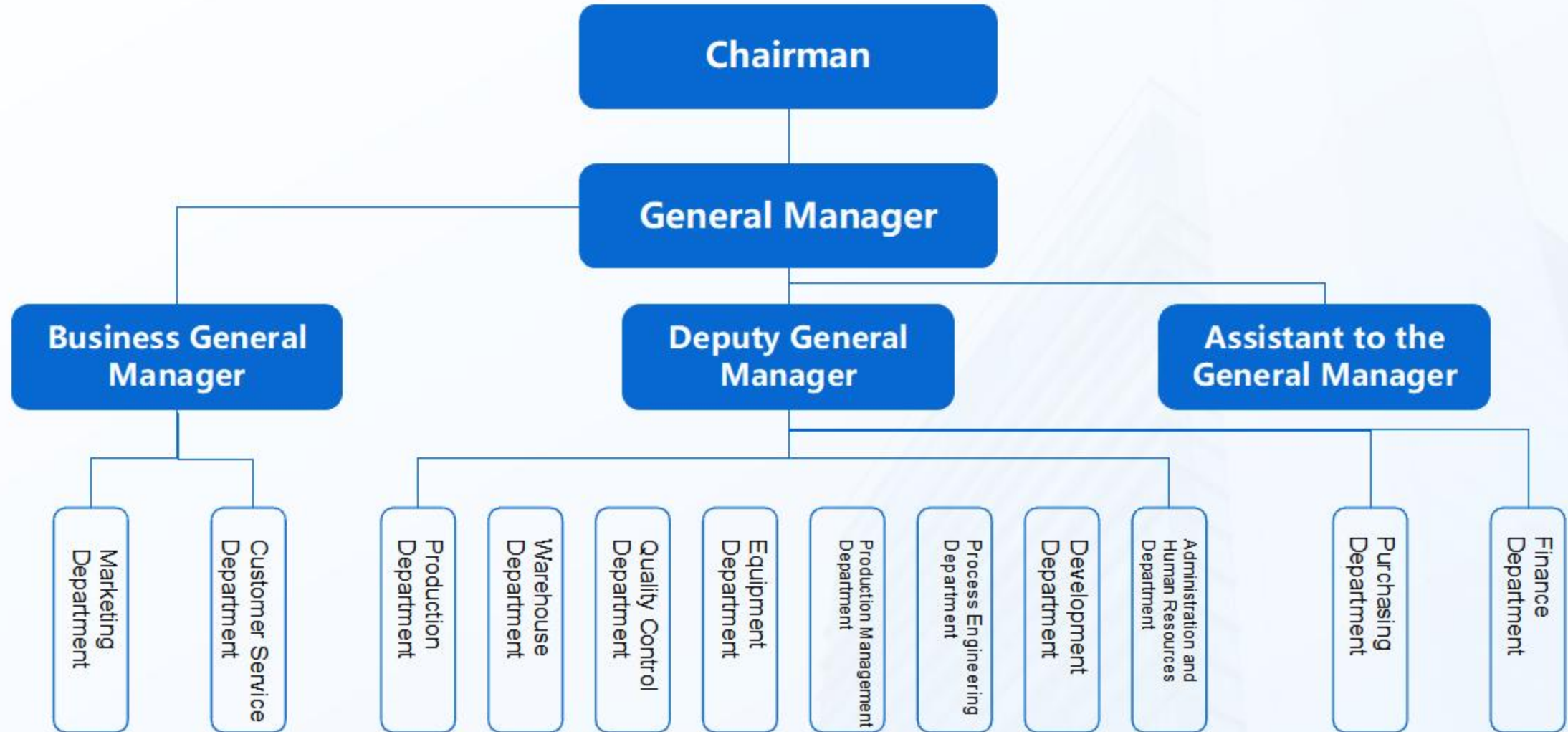
Primarily utilizing COB, SMT, COG, and pin-based processes, integrated with driver chips to deliver comprehensive display solutions.

05

Customized Display Services

Professional design, technical development, and customized solutions tailored to meet the needs of specialized scenarios.

Company Organizational Structure





Production Base - Zhuzhou, Hunan

Core Positioning and Production Capacity

As a core LCD production base, we specialize in manufacturing various LCD modes including TN, HTN, STN, and FSTN. Our monthly production capacity reliably supports large-volume orders, ensuring stable supply for global customers.

High-quality production facilities

Covering over 10,000 square meters with planned expansion space, the facility features cleanrooms and automated inspection equipment to ensure high-precision production requirements.

Location and Supporting Facilities Advantages

Located in Chaling County, Zhuzhou City, Hunan Province, the facility leverages regional industrial support and seamless logistics connections to ensure efficient production operations and rapid product delivery.



Production Base - Zhongshan, Guangdong



Base Positioning: LCM
Module Manufacturing
and R&D Center



Address: 3rd Floor,
Building B, Pingpu
Industrial Zone, No. 1
Wanli Road, Sanxiang
Town, Zhongshan City,
Guangdong Province,
China Postal Code: 528463



Production Scope:
Assembly and testing of
COG-type LCMs,
monochrome LCD
modules, and OLED
modules



Supporting Facilities:
R&D laboratories,
prototype production lines,
and mass production lines,
enabling seamless
transition from R&D to
mass production.



**Transportation
Advantage:**
Adjacent to core cities in
the Pearl River Delta
region, offering
convenient logistics and
facilitating rapid delivery.

Production Capacity and Operational Advantages

Number of employees

Over 500 professionals covering the entire chain from R&D, production, quality control, to sales.

Level of automation

Integrate automated equipment into critical processes to enhance production efficiency and product consistency.

Monthly production capacity

5 million pairs of glasses, with the capability to fulfill large-volume orders

Management Model

Team-based management + standardized processes ensure orderly and efficient production.

Flexible production

Supports both small-batch customization and large-scale mass production to accommodate diverse customer requirements.

**Production Capacity
and Operational Advantages**

Production Equipment Showcase

The company has introduced advanced automated production and testing equipment from both domestic and international sources, covering critical processes such as LCD cutting, crystal filling, lamination, COB bonding, COG bonding, and AOI optical inspection. This ensures high precision and reliability in our products.

**Automated LCD
Production Line**



**High-Precision COB
Bonding Equipment**



**AOI Automatic Optical
Inspection System**



Cleanroom Environment



Partial Product List

module Type	Lattice number	module size	area	dot size	charactersize	driver	Remarks
JXD0801A	08*01	39.8*27.5*10.5	33.2*10	5*8	0.56*0.65	ST7066 OR AIP31066	
JXD0802A	08*02	58*32*10.5	38*16	5*8	2.96*5.56	ST7066 OR AIP31066	
JXD0802A-1	08*02	58*32*10.5	38*16	5*8	2.96*5.56	ST7066 OR AIP31066	
JXD1601A	16*01	80*36*11/13	64.5*13.8/16	5*8	0.60*0.70	ST7066 OR AIP31066	
JXD1601A-1	16*01	122*33*13.5	105.4*23.7	5*8	6.85*8.56	ST7066 OR AIP31066	
JXD1602A	16*02	80*36*11/13	64.5*13.8/16	5*8	0.52*0.60	ST7066 OR AIP31066	
JXD1602A-S	16*02	80*36*11/13	64.5*13.8/16	5*8	0.52*0.60	ST7066 OR AIP31066	
JXD1602A-D	16*02	80*36*11/13	64.5*13.8/16	5*8	0.52*0.60	AIP31068	SPI
JXD1602A-I	16*02	87*32/11/13	64.5*13.8/16	5*8	0.52*0.60	AIP31068	IIC
JXD1602B	16*02	85*30*11/13	64.5*13.8/16	5*8	0.52*0.60	ST7066 OR AIP31066	
JXD1602C	16*02	84*44*11/13	64.5*13.8/16	5*8	0.52*0.60	ST7066 OR AIP31066	
JXD1602G	16*02	74*24*7/9	60.2*11.7	5*8	0.52*0.60	ST7066 OR AIP31066	
JXD1602A-F	16*02	80*36*13	64.5*16	5*8	3.55*5.95	ST7066 OR AIP31066	
JXD1602E	16*02	122*44*14	99*24	6*7	1.05*1.15	ST7066 OR AIP31066	
JXD1604A	16*04	87*60*11	61.8*25.2	5*8	0.55*0.55	ST7066 OR AIP31066	
JXD1604B	16*04	77*51*10	62*26	5*8	3.57*5.21	ST7066 OR AIP31066	
JXD2002A	20*02	116*37*12.5	83*18.5	5*8	0.576*0.625	ST7066 OR AIP31066	
JXD2004A	20*04	98*60*10	76*26	5*8	0.525*0.324	ST7066 OR AIP31066	
JXD2004B	20*04	146*62.5*13.5	123.5*43	9.75*6	0.98*1.16	ST7066 OR AIP31066	
JXD2402A	2402	118*36*13.5	94.4*17.8	5*8	3.7*5.9	ST7066 OR AIP31066	
JXD4002A	40*02	182*33.5*14	154.5*16.5	5.95*3.7	0.75*0.65	ST7066 OR AIP31066	
JXD4004A	40*04	190*54*13.5	149*30	6.09*3.53	0.55*0.5	ST7066 OR AIP31066	

Character type

Partial Product List

moduleType	Lattice number	module size	area	dot size	charactersize	driver	Remarks
JXD12232A	122*32	67.1*27.2*8.4	54.8*18.3	0.40*0.45	0.36*0.41	SED1520/AIP31520	
JXD12232B	122*32	84*44*13	60.5*18.0	0.40*0.40	0.36*0.36	SED1520/AIP31520	
JXD12232C2	122*32	76.4*29.1*7.0	54.8*18.3	0.40*0.45	0.36*0.41	SED1520/AIP31520	
JXD12232-2	122*32	65.6*29.2*5.5	54.8*19.1	0.40*0.45	0.36*0.41	SED1520/AIP31520	
JXD12832A	128*32	110*65*14.5	76*25.2	0.52*0.52	0.57*0.57	ST7920/AIP31020	
JXD12864I	128*64	54*50*6.5	43.5*29	0.28*0.35	0.32*0.39	KS0108/AIP31107/31108	
JXD12864-06C	128*64	75*52.5*8	55*38	0.52*0.52	0.48*0.48	KS0108/AIP31107/31108	
JXD12864C18	128*64	78*70*14	68*65	0.44*0.60	0.39*0.55	KS0108/AIP31107/31108	
JXD12864C-T	128*64	78*70*13	62*44	0.44*0.60	0.39*0.55	T6963C	
JXD12864A	128*64	93*70*12.5	73*39	0.52*0.52	0.48*0.48	KS0108/AIP31107/31108	
JXD12864A-23	128*64	93*70*12.5	70.7*38.8	0.52*0.52	0.48*0.48	KS0108/AIP31107/31108	
JXD12864-1	128*64	113*65*11	73.4*38.8	0.508*0.508	0.458*0.458	KS0108/AIP31107/31108	
JXD19264B	192*64	100*60*12	84*31	0.41*0.41	0.36*0.36	KS0108	
JXD19264A	192*64	130*65*11	104*39	0.508*0.508	0.458*0.458	KS0108	
JXD160128A	160*128	129*102*12.8	101*82	0.04*0.04	0.54*0.54	T6963C	
JXD24064A	240*64	180*65*11	132*39	0.49*0.49	0.53*0.53	T6963C	
JXD240128A	240*128	144*104*13.7	114*64	0.40*0.40	0.45*0.45	T6963C	
JXD240128A-1	240*128	144*104*13.7	114*64	0.40*0.40	0.45*0.45	T6963C	
JXD240128B	240*128	144*104*13.7	114*64	0.40*0.40	0.45*0.45	T6963C	
JXD240128C	240*128	170*92*12.6	128*74	0.47*0.47	0.5*0.5	T6963C	
JXD320240I-T	320*240	96*84*8.8	81.4*61	0.225*0.225	0.24*0.24	UCI7701*2 UCI7702*1	
JXD320240-2	320*240	139*120*13.5	103*79	0.27*0.27	0.3*0.3	RA8835	
JXD320240B	320*240	139*120*13.5	103*79	0.27*0.27	0.3*0.3	RA8835	
JXD320240A	320*240	167*109*12	122*92	0.03*0.03	0.33*0.33	RA8835	

Graphic dot matrix type

Partial Product List

module Type	Lattice number	module size	area	dot size	charactersize	driver	Remarks
JXD12232C-F	122*32	76.4*29.1*5.0	54.8*18.3	0.40*0.45	0.36*0.41	ST7920/AIP31020	
JXD12232F1	122*32	80*36*11	60.5*18.0	0.40*0.40	0.4*0.45	ST7920/AIP31020	
JXD12232F	122*32	84*44*13	60.5*18.0	0.36*0.41	0.40*0.45	ST7920/AIP31020	
JXD12864I-F	128*64	54*50*6.5	43.5*29	0.28*0.35	0.32*0.39	ST7920/AIP31020	
JXD12864-06F	128*64	75*55*12.5	55*38	0.52*0.52	0.48*0.48	ST7920/AIP31020	MOQ:1000 PCS
JXD12864BF	128*64	78*70*14	68*65	0.44*0.60	0.39*0.55	ST7920/AIP31020	
JXD12864F	128*64	93*70*12.5	73*39	0.52*0.52	0.48*0.48	ST7920/AIP31020	
JXD12864F-5	128*64	93*70*12.5	73*39	0.52*0.52	0.48*0.48	ST7920/AIP31020	
JXD12864F-6	128*64	113.4*65.4*13	72*40	0.48*0.48	0.52*0.52	ST7920/AIP31020	
JXD12864F-3	128*64	93*89*22	72*40	0.48*0.48	0.52*0.52	ST7920/AIP31020	3D printer
JXD12864F-4	128*64	130*73*26.5	72*40	0.48*0.48	0.52*0.52	ST7920/AIP31020	3D printer
JXD12864G-1	128*64	93*70*12.5	73*39	0.52*0.52	0.48*0.48	ST7920/AIP31020	
JXD16032A	160*32	122*44*13.5	99*24	0.52*0.52	0.48*0.48	ST7920	
JXD240128F	240*128	144*104*13	114*64	0.05*0.05	0.4*0.4	RA8806	
JXD240128F-RT	240*128	144*104*13	114*64	0.05*0.05	0.4*0.4	RA8806	RT TOUCH
JXD320240BF	320*240	139*100*13	103*79	0.03*0.03	0.33*0.33	RA8806	
JXD320240BF-RT	320*240	139*100*13	103*79	0.03*0.03	0.33*0.33	RA8806	RT TOUCH
JXD320240AF	320*240	160*109*13	122*92	0.03*0.03	0.33*0.33	RA8806	
JXD320240AF-RT	320*240	160*109*13	122*92	0.03*0.03	0.33*0.33	RA8806	RT TOUCH

Chinese character library type

Partial Product List

	module Type	Lattice number	module size	area	dot size	character size	driver	Remarks
COG type	SJXD12864-088	128*64	42.3*33.0*2.8	39.8*25.5	0.03*0.03	0.39*0.26	UC1701X	
	SJXD12864-743	128*64	38*30*6.25	32*19.5	0.24*0.22	0.26*0.24	ST7565R	white light
	SJXD12864-742	128*64	38*30*6.25	32*19.5	0.24*0.22	0.26*0.24	ST7565R	Blue light
	SJXD12864-12 LCM	128*64	40*34.5*7	32*19.5	0.24*0.22	0.26*0.24	ST7565R	
	SJXD12864-6601	128*64	33.7*30.5*2.8	30.7*23	0.02*0.02	0.308*0.205	ST7567	
	SJXD12864E-001913	128*64	47.8*29	44*29	0.36*0.29	0.39*0.32	ST7565R	
	SJXD12864-14 LCM	128*64	54*50*8.0	44*29	0.36*0.29	0.39*0.32	ST7565R	
	SJXD12832-143	128*32	35*21.15*2.9	32*13	0.02*0.02	0.308*0.205	ST7567	
	SJXD162A-1031	16*02	68.6*25*2.8	65.6*16	0.05*0.05	6.6*3.55	SPLC792A	
	SJXD12864-789	128*64	60.2*44.2*7.1	54*31	0.41*0.37	0.38*0.34	ST7565R	
	SJXD12864-09 LCM	128*64	70*52.5*9.5	54*31	0.41*0.37	0.38*0.34	ST7565R	
	SJXD12864-985	128*64	50.2*39.2*7.5	44*29	0.36*0.29	0.39*0.32	ST7567A	
	SJXD12864-1025	128*64	47*35*3.3	43.1*26.7	0.02*0.02	0.365*0.3	ST7567	
	SJXD12864-1986	128*64	58.6*40.6*8.0	53.6*28.6	0.36*0.35	0.39*0.38	ST7567	
	SJXD12864-1062	128*64	56.4*37*6.0	53.8*28.8	0.36*0.35	0.39*0.38	ST7567	
	SJXD12864-233J	128*64	51.4*45.4*2.8	47*33.2	0.02*0.02	0.3*0.37	NT7538	
	SJXD12864-376	128*64	60*45*8.1	54.2*32.5	0.34*0.35	0.35*0.38	ST7565R	
	SJXD12864-552	128*64	69*50*2.8	65.5*38	0.025*0.025	0.45*0.49	ST7567S	
	SJXD12864-653-B	128*64	50.2*39.2*7.5	44*29	0.36*0.29	0.39*0.32	ST7567A	STN Blue

Partial Product List

	moduleType	Lattice number	module size	area	dot size	character size	driver	Remarks
COG type	SJXD12864-653-W	128*64	50.2*39.2*7.5	44*29	0.36*0.29	0.39*0.32	ST7567A	FSTN white light
	SJXD12864-3435	128*64	57*42*2.8	53.4*31.4	0.08*0.08	0.4*0.36	ST7565R	
	SJXD12864-2479	128*64	24.2*19.2*4	19.8*12.0	0.02*0.02	0.144*0.12	ST7567	
	SJXD12864C1-001002-WX	128*64	69*46*2.8	66*38	0.025*0.025	0.45*0.49	ST7565R	
	SJXD12864C-3561	128*64	76.1*54*9.7	70.7*38.8	0.04*0.04	0.48*0.48	ST7567S	
	SJXD12864-X003627	128*64	65.1*40.5*2.8	58*29.5	0.04*0.04	0.39*0.39	ST7567	
	SJXD12896A	128*96	78*60*9.5	75*51	0.06*0.06	0.41*0.48	ST7541	RGB LED
	SJXD19264G	192*64	54.5*21.54*5.5	47.5*17.49	0.02*0.02	0.218*0.218	UC1604C	
	SJXD24064-013	240*64	81.5*33*6.68	75.2*21.7	0.17*0.17	3.07*3.07	ST75256-G2	RGB LED
	SJXD24064B-X003167C	240*64	144.9*53.4*6.5	132.6*39	0.03*0.03	0.5*0.5	ST7565P*2	DFSTN black
	SJXD24064B-X003167D	240*64	144.9*53.4*6.5	132.6*39	0.03*0.03	0.5*0.5	ST7565P*2	FSTN white
	SJXD128128A-X003501A	128*128	46.5*55.2*2.8	43.5*45.2	0.03*0.03	0.3*0.25	ST7571	
	SJXD160160A-X002434	160*160	64*69.9*2.8	60*60	0.02*0.02	0.32*0.32	UC1698U	
	SJXD240064A04	240*64	134.6*55.1*5.8	111*37	0.47*0.41	0.5*0.44	UC1608	
	SJXD240128COG-38	240*128	89.1*58.2*12.55	81*44	0.02*0.02	0.295*0.295	UC1638C	
	SJXD240128COG	240*128	71.3*52.2*7.1	65*38	0.02*0.02	0.25*0.22	UC1638C	
	SJXD240160COG	240*160	84.6*61.1*6.5	78.5*48	0.255*0.27	0.275*0.29	UC1638C	
	SJXD320240F6C COG	320*240	88.3*69.1*2.0	79.8*60.6	0.225*0.225	0.24*0.24	UCI7701*2 UCI7702*1	
	SJXD320240I-T	320*240	96*84*8.8	81.4*61	0.225*0.225	0.24*0.24	UCI7701*2 UCI7702*1	
	SJXDG12864A-X005084A	128*64	60*43*2.8	57*32	0.04*0.04	0.353*0.353	NT7534	
	Y-SJXD12864-254	128*64	50.2*39.2*5.5	44*29	0.29*0.36	0.32*0.39	ST7565R	
	SJXD12864-231	128*64	56*58.2*5.6	50*25	0.03*0.03	0.33*0.33	ST7565R-G	28PIN
	SJXD12864-338	128*64	77.4*52.4*9.5	70*40	0.02*0.02	0.5*0.5	ST7565R	28PIN
	SJXD12864-4650	128*64	67.8*47.96*2.8	64*35.5	0.015*0.015	0.5*0.46	ST7565R	26PIN

Featured Products — COG Series



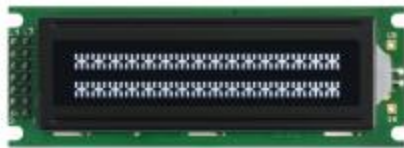
Featured Products — OLED Series



Featured Products — TFT Series



Featured Products — Monochrome Character Series



Featured Products — Custom Pen Bar Series



Featured Products — Graphic Dot Matrix Chinese Font Series



Technical R&D Capabilities

• R&D Team

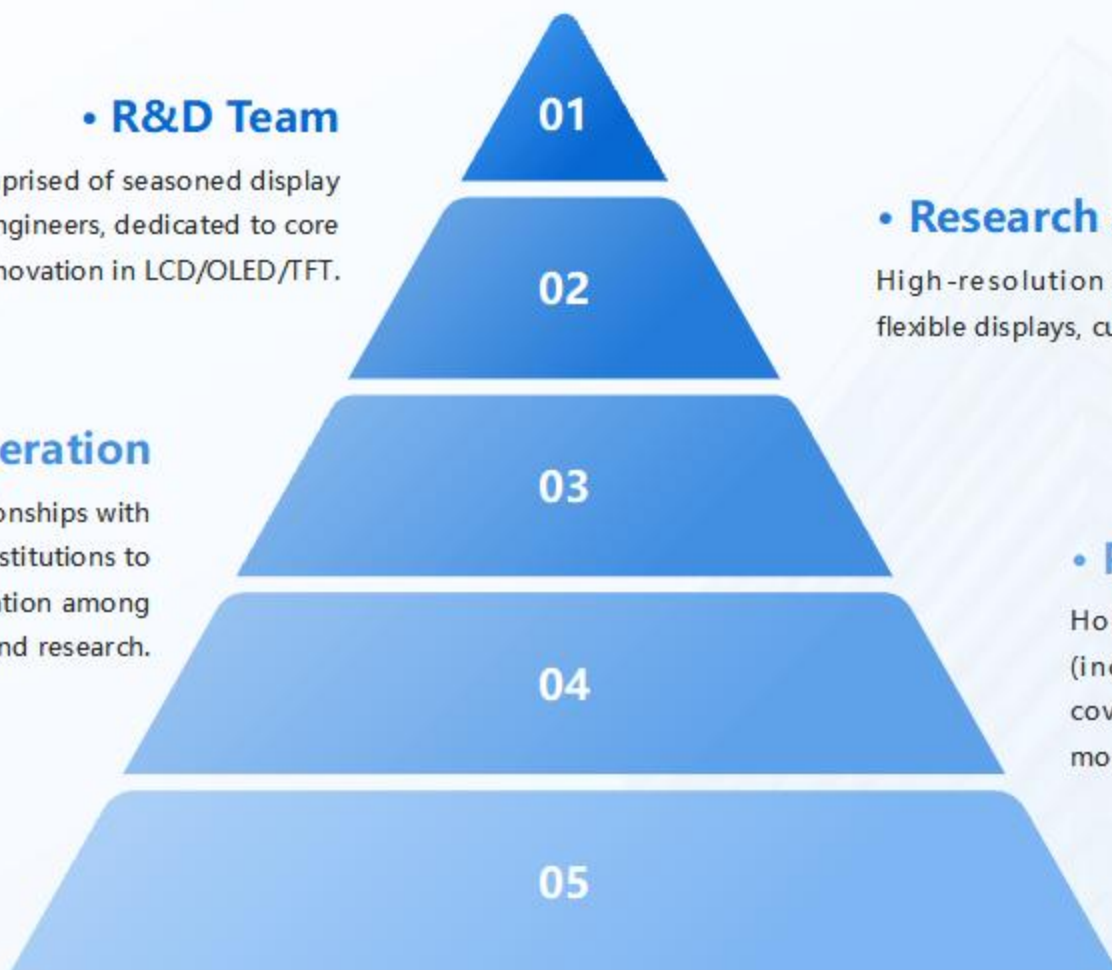
Comprised of seasoned display technology engineers, dedicated to core technological innovation in LCD/OLED/TFT.

• Technical Cooperation

Establish cooperative relationships with universities and research institutions to foster collaborative innovation among industry, academia, and research.

• R&D Achievements

We have successfully developed over 500 customized products, earning high recognition from our clients.



• Research and Development Direction

High-resolution displays, low-power design, flexible displays, customized module development

• Patent Strategy

Holds multiple LCD display-related patents (including core patents for the SJXD series), covering structural design, drive technology, and more.

Patent Certificate Display (Part One)



Patent Certificate Showcase (Part II)



Quality Management System

- **System Coverage:** Comprehensive process management spanning raw material procurement, production process control, finished product inspection, and after-sales service
- **Core Advantages:** Standardized management ensures product consistency, full lifecycle traceability, and compliance with international clients' quality requirements



Product Certification - RoHS

• Certification Standards

EU RoHS Directive 2011/65/EU and its amendment 2015/863/EU (RoHS 2.0)

• Core Significance

The product contains no lead, cadmium, mercury, or any of the other 10 types of hazardous substances, meeting EU environmental requirements and ensuring smooth access to international markets.

• Testing Standards

IEC 62321 Series Standards (2013–2017 Editions)



• Certification Number

23ITC0426150

• Issuing Authority

Shenzhen iTC Product Testing Co., Ltd.

• Certified Products

2402A Character STN Blue Screen and 11 Derivative Models (such as 1602A, 1604B, 2004A, etc.)

Core Data of the Inspection Report

Restricted Substance	Test Result	RoHS Limit (mg/kg)
Cadmium	Not Detected (N.D.)	≤100
Lead	Not Detected (N.D.)	≤1000
Mercury	Not Detected (N.D.)	≤1000
Hexavalent Chromium	Not Detected (N.D.)	≤1000
Polybrominated Biphenyls (PBBs)	Not Detected (N.D.)	≤1000
Polybrominated Diphenyl Ethers (PBDEs)	Not Detected (N.D.)	≤1000
Phthalates	Not Detected (N.D.)	≤1000
Note: MDL (Method Detection Limit): Cd/Pb/Hg is 2mg/kg, Cr(VI) is 8mg/kg, PBBs/PBDEs is 5mg/kg, and Phthalates is 50mg/kg.		

Trademark Registration and Brand Protection

Brand Philosophy

With technology as our core and quality as our foundation, we strive to build a globally renowned display brand.



Application Areas (I): Industrial Control and Automation



> • Core Application Scenarios

Industrial controllers, PLC human-machine interfaces, variable frequency drives, sensor displays

> • Product Requirements

High stability, wide temperature range compatibility, strong anti-interference capability

> • Solution

Provides character-based/graphic-based LCDs and COG modules, supporting customized interfaces and display formats.

> • Customer Value

Ensure reliable operation in industrial environments and enhance equipment operability.

Application Areas (II): Consumer Electronics and Smart Home

01

Core Application Scenarios

Smart speakers, smart home control panels, small appliance displays, portable digital devices

02

产品需求

Lightweight and compact, low power consumption, aesthetically pleasing design, multi-color backlighting

03

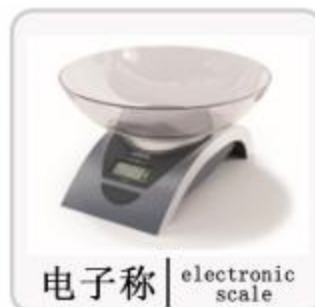
Solution

OLED displays, LCD displays, small TFT LCDs, COG modules, supporting touch functionality and customizable designs

04

Customer Value

Enhance the technological sophistication and user experience of products to meet the demands of consumer electronics iteration.



Application Areas (III): Healthcare and Automotive Electronics



血压仪 | blood pressure monitor



血糖仪 | blood glucose meter



测温枪 | Infrared thermometer



按摩仪 | massager



Healthcare

- Application Scenarios: Blood glucose meters, blood pressure monitors, portable medical devices, hospital monitoring equipment
- Product Requirements: High resolution, high reliability, low electromagnetic radiation, compliance with medical certifications
- Solutions: High-contrast LCD and OLED displays supporting long-term stable operation

Automotive Electronics

- Application Scenarios: Vehicle instrument clusters, center console displays, rearview camera displays, in-vehicle navigation systems
- Product Requirements: Wide viewing angles, high-temperature resistance, shock resistance, fast response times
- Solutions: TFT LCD modules, high-brightness display products designed for harsh automotive environments

Partners



Supply Chain and Global Layout



01 • Supply Chain Advantages

Establish stable procurement channels for raw materials (glass substrates, driver chips, backlight assemblies, etc.) to ensure production capacity and quality.

02 • Global Market

Our products are exported to Europe, the Americas, Southeast Asia, and other regions, serving customers worldwide.

03 • Import and Export Qualifications

Possesses import and export rights for goods and technology, enabling rapid response to international orders.

04 • Partners

Establish long-term strategic partnerships with upstream and downstream enterprises, research institutions, and industry clients to achieve mutually beneficial development.

05 • Logistics Support

Leveraging the Pearl River Delta logistics hub and integrating with international logistics networks to ensure rapid order fulfillment.

Corporate Mission and Vision



• Corporate Mission

Leveraging advanced display technologies as our core strength, we deliver high-quality, customized display solutions to global customers, empowering the innovative development of smart devices.



• Core Values

Integrity, Innovation, Quality,
Win-Win



• Corporate Vision

Become a globally leading provider of display technology solutions, driving the industry's technological development trends.



• Business Philosophy

Customer-centric, technology-driven, quality-focused, continuous improvement



Future Plans

Product Upgrade

Optimize the performance of existing products and develop more high-value-added customized products.

Production capacity expansion

Expand production facilities and enhance automation levels, with a monthly production capacity target exceeding 8 million glass units.

Technological Innovation

Increase R&D investment and focus on cutting-edge technologies such as flexible displays, Mini/Micro LED, and high-resolution OLED.

Brand Building

Enhance the brand's international influence and build a globally renowned brand in the display industry.

Market Expansion

Deeply cultivate international markets and expand into emerging application fields (Internet of Things, smart wearables, new energy vehicles, etc.)



公司联系方式

• **Zhongshan Base Address:** 3rd Floor, Building B,
Pingpu Industrial Zone, No. 1 Wanli Road,
Sanxiang Town, Zhongshan City, Guangdong
Province

• **Zhuzhou Base Address:** Chaling County, Zhuzhou
City, Hunan Province (LCD Production Base)

- **Office Phone:** 0086-0755-29769890
- **Factory Phone:** 0086-0760-85884496
- **Mobile Phone:** +86 13410722120 (also WhatsApp)
- **Email:** sccdisplay107@sgoodlcm.com
- **Official Website:** www.sccdisplay.com
- **Postal Code:** 528463 (Zhongshan Base)



Looking forward to cooperation and creating a better future together

We look forward to joining hands with you to
create a new future for display technology!