

Listen to the world



Globaltech Industrial Co., Limited

Add: 4th Floor, Jutang Industrial Building, Junpu Industrial Park,
Houjie Town, Dongguan, Guangdong Province, China..

Key Contact: Stephen (+86-15820852165)

Tel: +86-769-2200 0706

Fax: +86-769-8559 2857

E-mail: info@globaltech.net.cn

Website: www.globaltech.net.cn

Skype: globaltech168

Wechat: +86-15820852165

Globaltech is a professional manufacturer focused on computer peripheral products, including mouse, keyboard and headset. Since founded in January 2008, Globaltech was dedicated to provide more smooth and comfortable experience with their computer accessories to customers around the world. With 10 year's development, the company now possesses 5,000 square meters industrial park and 5 cycles of production line, together with 120 production workers and 30 service employees - these support the monthly output of more than 300,000 pcs Gaming mice, keyboards and headsets.



To live up to the standards of ISO 9001, our QC staff see to it that each item undergoes rigid computer tests using unique testing software. Thus, we can assure you that our products are accredited by FCC and CE certification. And we commit ourselves to provide the customers with the excellent quality and after-sales service.

In today's dynamic IT industry, the change is so rapid and tremendous. Our commitment towards our partners and customers combined with our constantly strive for excellence in quality, innovation, and service has enabled us to be a market leader in the 21 century.

We are looking forward to making the mutual benefit co-operation with you.

Business Type

Manufacturer, Exporter

Capital

US\$3,000,000

Primary Competitive Advantages

- Experienced R&D Department
- Strong OEM Capability and Production Capacity
- In-house Mold-making

Total Annual Sales

US\$ 15,000,000 (Domestic-30%; Abroad-70%)

No. of Total Staff

150

Year Established

2008

Brand Names

IPLAY GAMING

Types of Plant & Machinery in Factory

- 10 sets of plastic injection machines
- 5 sets of assembly lines

No. of R&D Staff and Engineers

5

Monthly Capacity

300,000 pcs on average

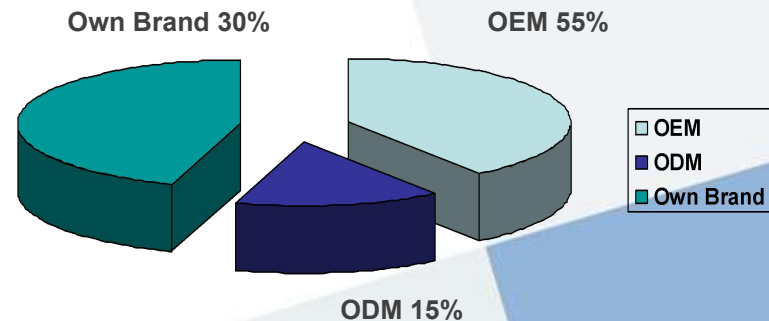
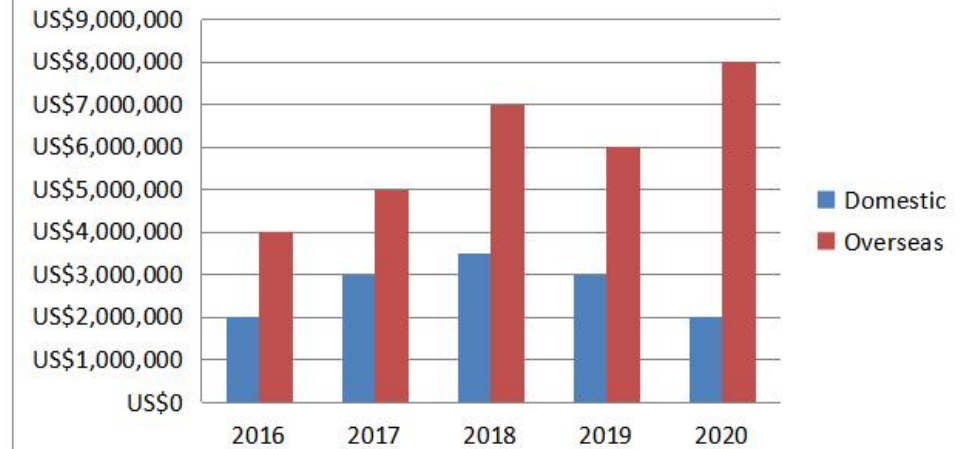
Product Range

- Gaming Mouse
- Gaming Keyboard
- Gaming Headset

Major Customers

CoolerMaster, MSI
Hama, Trust,
Bigben, PNY

Sales Volume

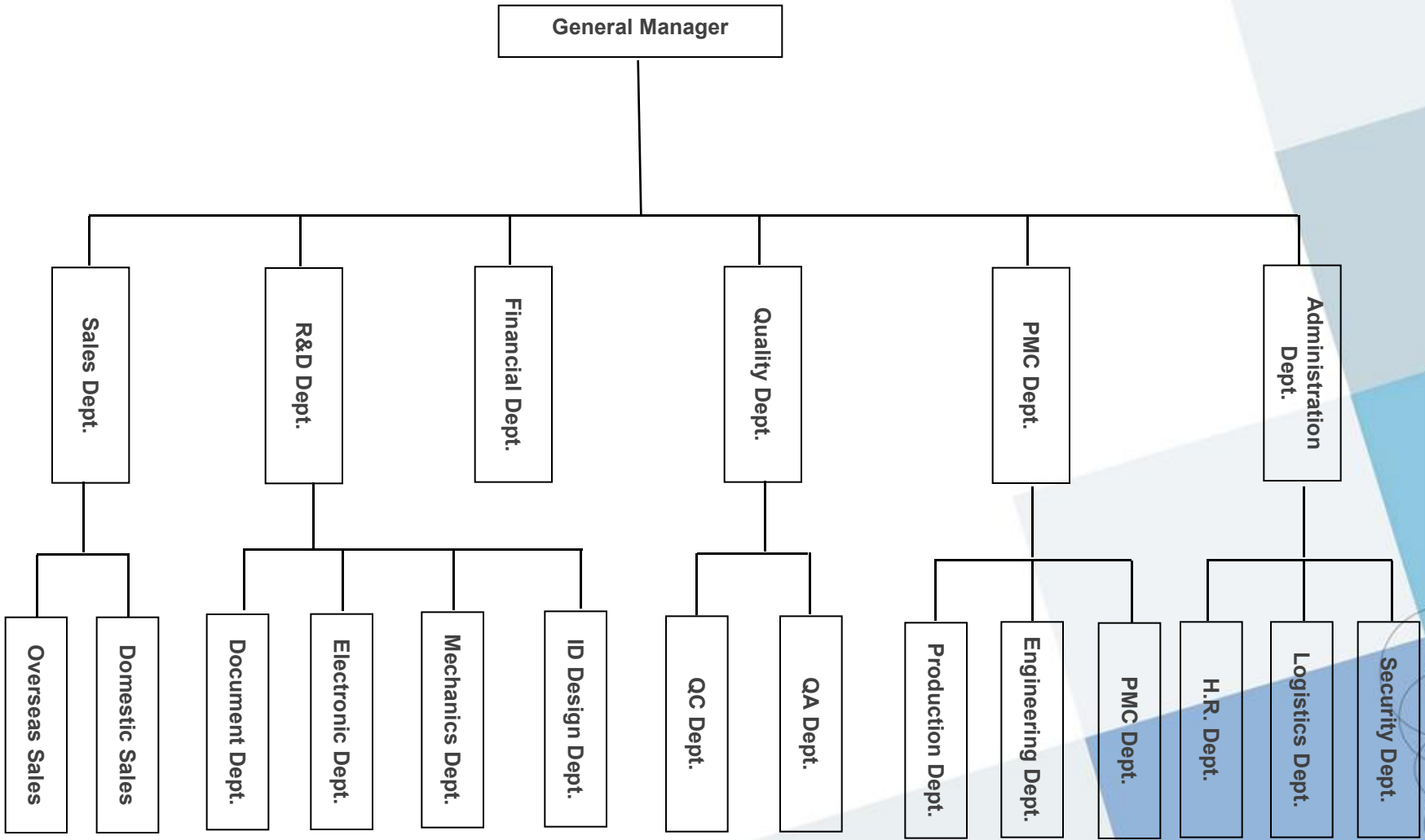


Vision: We are one of the most professional designers, manufacturers, and value innovators of personal interface products, which we are the best OEM/ODM partner for major worldwide and regional reputable brands. We act with confidence, serve with courtesy and strive for excellence.

Mission: Creating and designing a highly competitive and profitable products & service by empowering our people to generate the most effective and efficient performance that help our partners succeed in different market positions.



- **Honesty:** Following regulations, consistent with words and actions;
- **Active:** Voluntary, enthusiastic participation;
- **Customer-oriented:** Active feedback, immediate response;
- **Safety Awareness:** Safety first, continual improvement;
- **Communication:** Listening, precise feedback;
- **Responsibility:** Undertaking, achievement;
- **Team work:** Collaboration, team first.



Reliability Test

High Quality Products are through our commitment of endless improvement! To ensure our high quality standard, each of Globaltech's products is going through our eight professional testing methods:

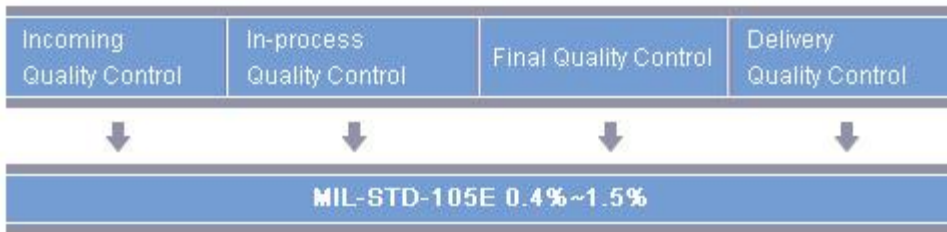
Our skilled engineers are monitoring each phase of testing and inspection. We have 5 assembly lines and we employ military standard MIL-STD-105E to test our products' reliability. With 4 times of disciplined function testing from the assembling to the packing procedure, you can count us that every Globaltech's product has zero deficiencies.

Declaration of conformity in accordance with the Radio and Telecommunications Terminal Equipment Act (FTEG) and Directive EN 55032:2012 (R&TTE Directive).



RoHS testing machine

Quality Audit System



- | | | | |
|---|--|--|--|
| <ul style="list-style-type: none"> • Incoming Material Check • Non-conforming Control • Vendor Quality History Record • Material Inspection Statistic Report • Material Replace- | <ul style="list-style-type: none"> • First Article Check • In-process Patrol Inspection • Non-conforming Control • In-process Spot Inspection • IPQC Statistic Report | <ul style="list-style-type: none"> • In-process Final Inspection • QC Final Inspection Statistic Report • Non-conforming Control • Weekly/Monthly Quality Report | <ul style="list-style-type: none"> • Delivery Inspection • AQL |
|---|--|--|--|

Quality Objectives

- Production pass rate above 99%
- Rate of customer complain under 1.5%



Globaltech's RoHS Compliance Statement

January 2003, the European Union (E.U.) adopted an important environmental directive -- the Directive on the Restriction of Hazardous Substances (RoHS). The directive represents an important milestone in fostering a safer and healthier environment for future generations.

Globaltech continues to be committed to protecting people and the environment and has and will meet all RoHS standards after the stated E.U. deadline of July 1, 2006.

For the last 10 years, Globaltech has actively sought out and developed alternatives that enabled us and our customers to reduce waste associated with the electronics industry. We have constantly worked to reduce the amount substances and materials within each of our products in order to reduce the hazard on our environment and make our customers' environment safe and healthy for years to come.

RoHS Directive - 2002/95/EC

The Restriction of Hazardous Substances in Electrical and Electronic Equipment (RoHS) Directive was established by the European Union (E.U.). It affects manufacturers, sellers, distributors and recyclers of electrical and electronic equipment containing lead, cadmium, mercury, hexavalent chrome, polybrominated biphenyl (PBB) and polybrominated diphenyl ether (PBDE). After July 1, 2006 the use of these materials will be banned in new products sold in Europe; however each E.U. member country will apply its own laws in regards to the directives.

In 2010, Globaltech began the process of converting all of its products to be built without any of the banned materials. The qualification of RoHS-compliant components supplied by our vendors and the implementation of new manufacturing processes related to this Directive was undertaken from 2010.

All of Globaltech's products and their packaging materials sold worldwide will be fully RoHS-compliant since 2010. An exception to this will be certain legacy products for which RoHS-compliant components are unavailable from the suppliers. Such products will later be marked with RoHS identification on the packaging and other area to help everyone identify those that meet the RoHS directive.

If you have any questions or concerns regarding the above statement or Globaltech's commitment to the RoHS directives, please email: info@globaltech.net.cn

Mechanical

By the use of up-to-date professional 3D engineering software, such as Pro-E and SolidWorks , our expert award-winning mechanical R&D team focus on giving you input devices incorporating of the best ergonomic shape , and design . Our goal is to give our customers an exciting computer experience and thus enjoy the benefits of the latest technology.

Electronic

We have over 10 years of high technology experienced engineers. From Chipset design to the latest Radio Frequency research-our engineers prove that there is nothing simpler in mouse and headset design. Our smooth and functional product, advanced design and daily research efforts have made Globaltech a fastest growing company in the industry. With high-level R&D and customer-focused products you can count on Globaltech as your partner in such competitive IT industry.



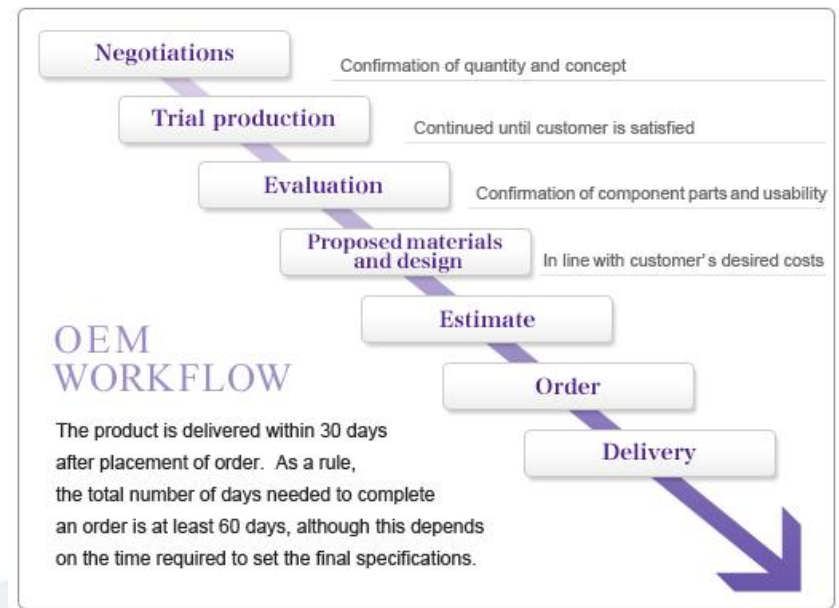
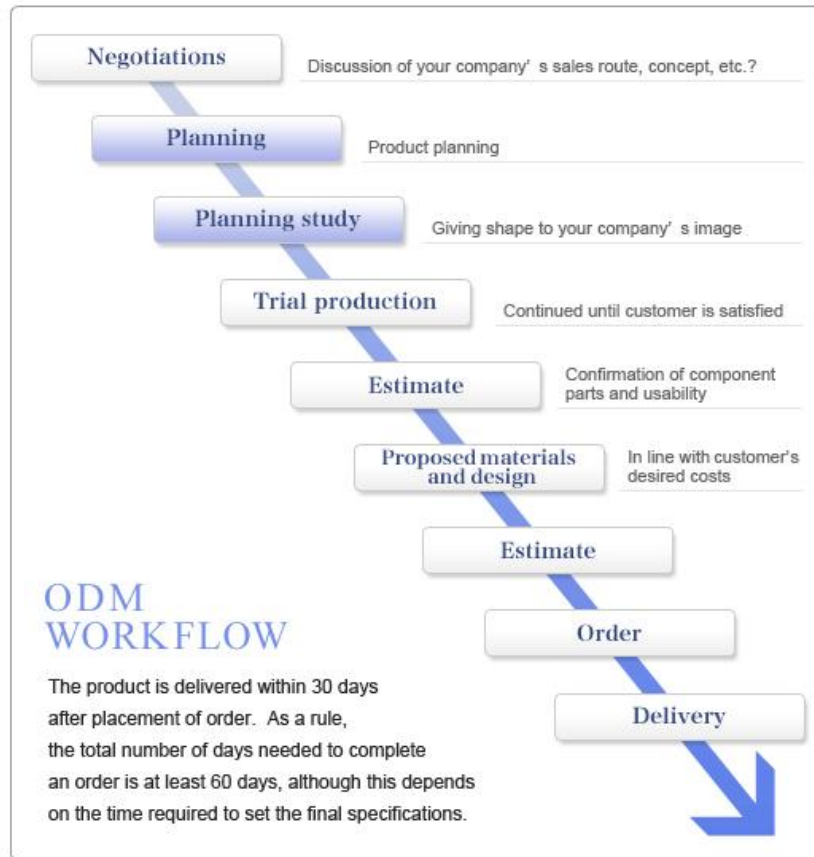
Equipment

To provide and develop award-winning product, Globaltech has continuous investment for better R&D equipments. We have equipments such as 2.51 Ghz Signal Generator, Spectrum Analyzer, LCR Electric Bridge, and Electrical Safety Compliance Analyzer with well experienced research and developed engineering core teams. It assures Globaltech's full capability to pursue the latest and the most advanced innovative products. It also guarantees Globaltech's new products will always take the leading edge in the market.

Software

Our software drivers are approved by Microsoft WHQL digital signature and compatible with the latest developments in Operating Systems. Our software team has more than 5 years of experience and will continue working hard to develop more software for our fellow customers.

We accept OEM and ODM orders on all our product lines. We will use the buyers' own logo/label as demanded, and can use such quality standards and approvals as required. We have always offered this service, and are always happy to assist with product design.





Molding Factory-1



Molding Factory-2



Molding Factory-3



Painting Line



Injection Line



Assembly Line



Constant temperature and humidity machine



Cable testing machine



Scroll testing machine



Pad testing machine



RoHS testing machine



Mold testing machine-1



Mold testing machine-2



Mold testing machine-3



Thanks for your attention!