

Our history

Founded at the end of 2003, we mainly serve the purchasing business of hard products for western retailers. We cover more than **2,200 customers in 140 countries** all over the world, and the group has been listed in the **top 500 of China's import** and export enterprises for many successive years.

1999-2003

The company was formerly known as DEP C of a trading company

2004-2006

During the first three years after the establishment, the company achieved a very rapid development and produced a miracle of success in the industry. And it founded the first subsidiary Royal Union on September 1, 2006.

2007-2009

After experiencing the world financial crisis, the company entered the stable development period for the first time, but it still maintained an annual growth rate of more than double digits. The company proposed the "student ethos", and established Source well which is the first localized trading company in Yiwu at the end of 2009.

2010-2012

The company experienced the second rapid development, and its growth rate is more than 70% for three consecutive years. The company was separated from a trading group at the end of 2010, and the transition period was from 2011 to 2012. The company proposed to learn from "Li & Fung".

2013-2015

The company entered the stable development period again, with nearly 1000 employees, and then it became the largest trading company in Ningbo and Yiwu.

2016-2018

The company maintained a growth rate of more than 20% for three consecutive years, but there was no increase in the number of employees. Per capita efficiency increased more than one time, and operating efficiency also significantly improved. In August 2018, the monthly export revenue exceeded 70 million US dollars. In the first half of 2017, the company established the third operation center in Shanghai after Ningbo and Yiwu.

The Market Union Group

Trade services



Services

- Customer - centered department
- Customer - centered company
- Customer - centered business division



Products

- Product - focused department
- A product - focused company
- Product - focused business division



Purchasing agent

- Department with the work content of helping customers purchase and working as the customers' purchasing office in China
- Company with the work content of helping customers purchase and working as the customers' purchasing office in China
- Business division with the work content of helping customers purchase and working as the customers' purchasing office in China

Market Union Today

15 years of glorious development history and evolution

About **1,000 employees**

5 oversea offices in France, Russia, Panama, Colombia and Chile

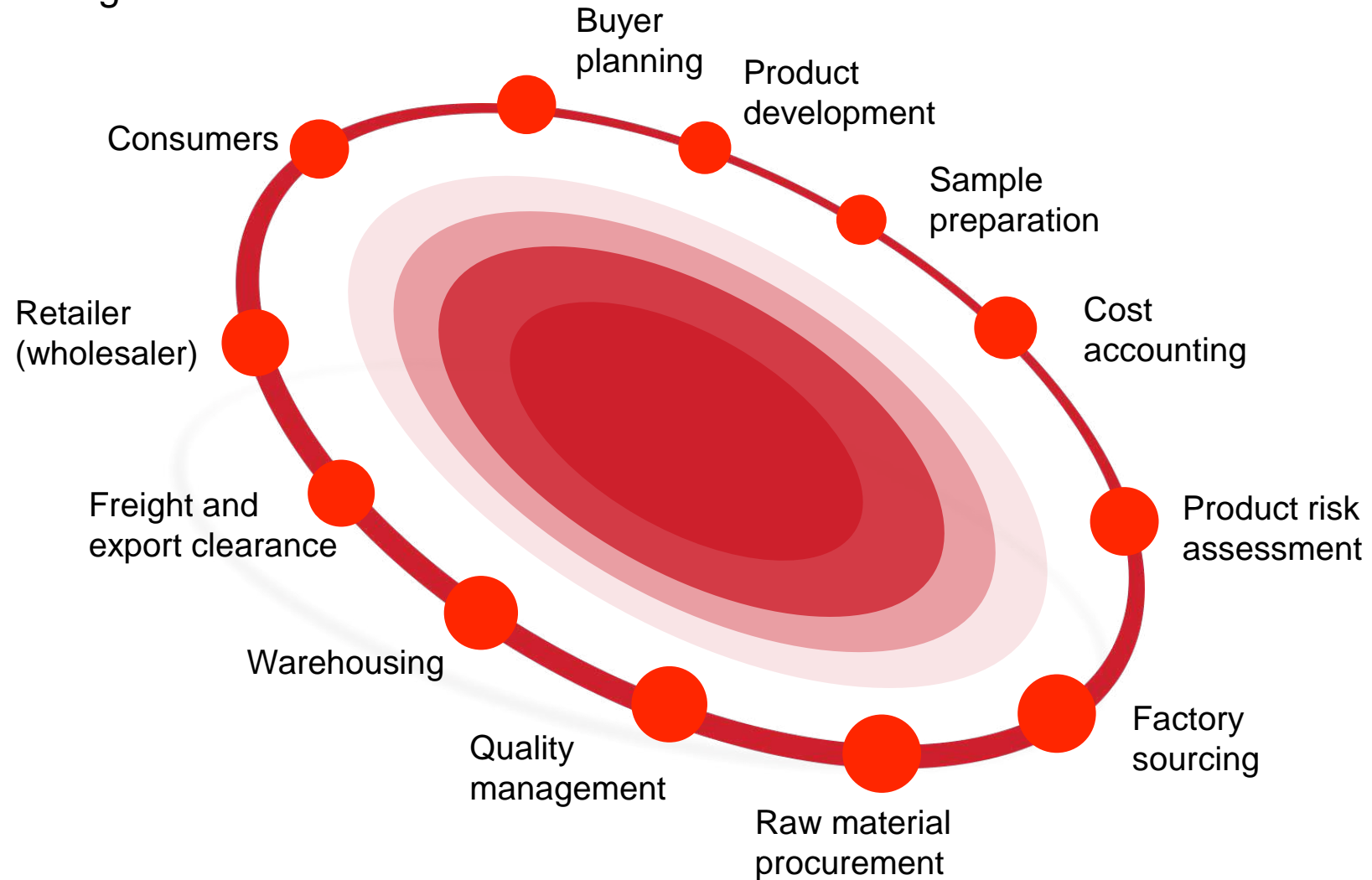
6 operating centers and offices in Ningbo, Yiwu, Shanghai, Xiamen, Shantou and Guangzhou

More than **10,000 suppliers** with tight cooperation in procurement in China and Asia



Supply Chain Management

MU Supply Chain management services



Our business

Service

- QC
- QA
- CSR
- Large showroom
- Design capability
- Product development capability

Products

- LED lamps, solar lamps
- Hand tools products, laser products
- Plush toys, photo frame products
- Household storage products, beauty products
- Outdoor products, indoor home furnishing
- Kids Craft products, Christmas products
- Paper products, clothing accessories, children's products
- Cup products, ornaments, etc.,

Our Three-Year Plan (2019-2021)

Our goal is to become **one of the three largest procurement and design groups in Asia in the next three years!** Through expanding our purchasing network in China and Asia and increasing our overseas companies, we can provide better services for our global retailers, **brand owners and customers!**

Our three core themes



Enhance efficiency



Enhance reaction speed



Enhance product and
packaging design capability

Key customer base

North America



Key customer base

Europe



Key customer base

South America



Latin America



South Africa



Key customer base

Russia



Key customer base

Ukraine



NOVUS



Key customer base

Asian








TOP500

China's top 500 foreign trade company

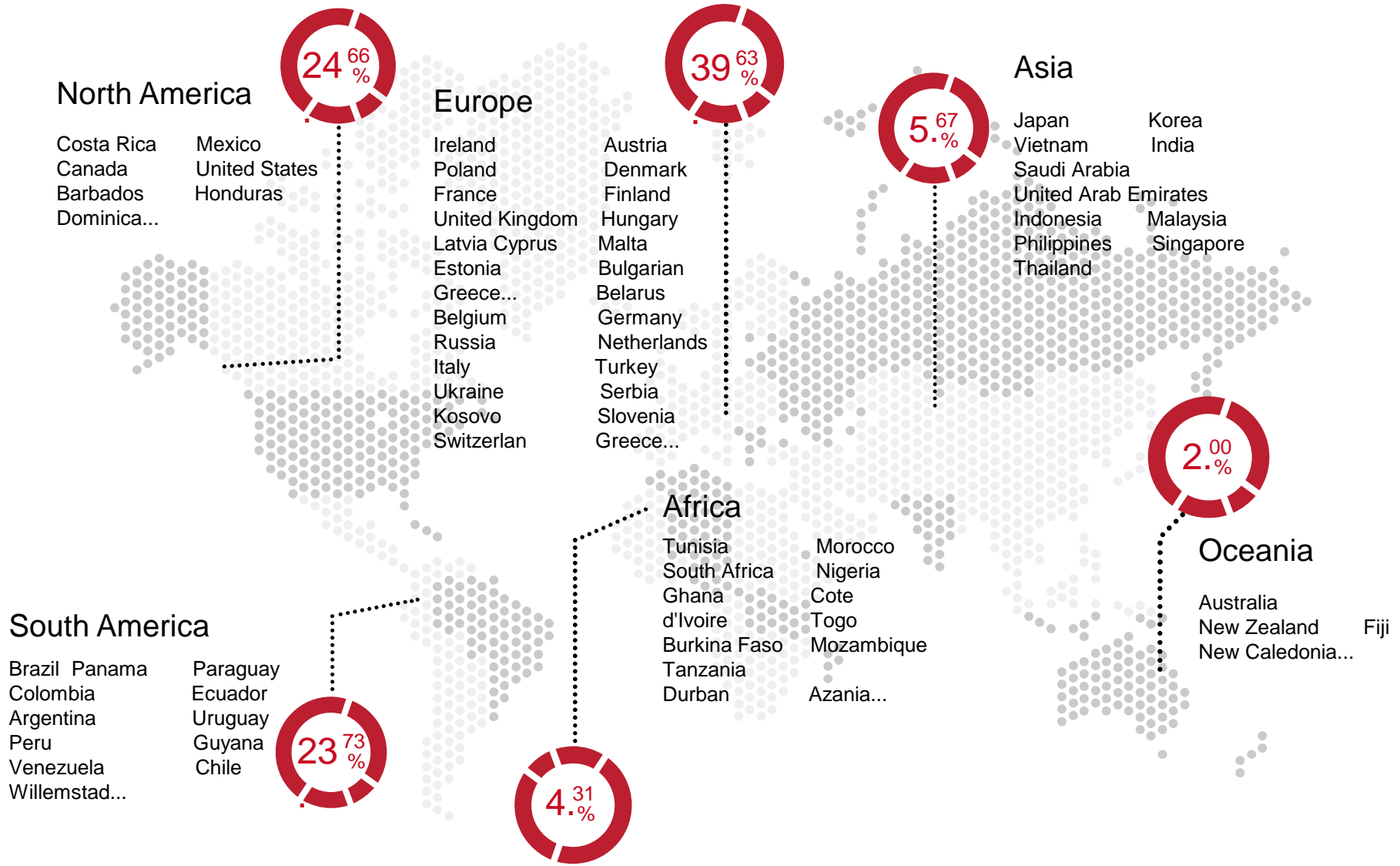
Purchase Coverage Area



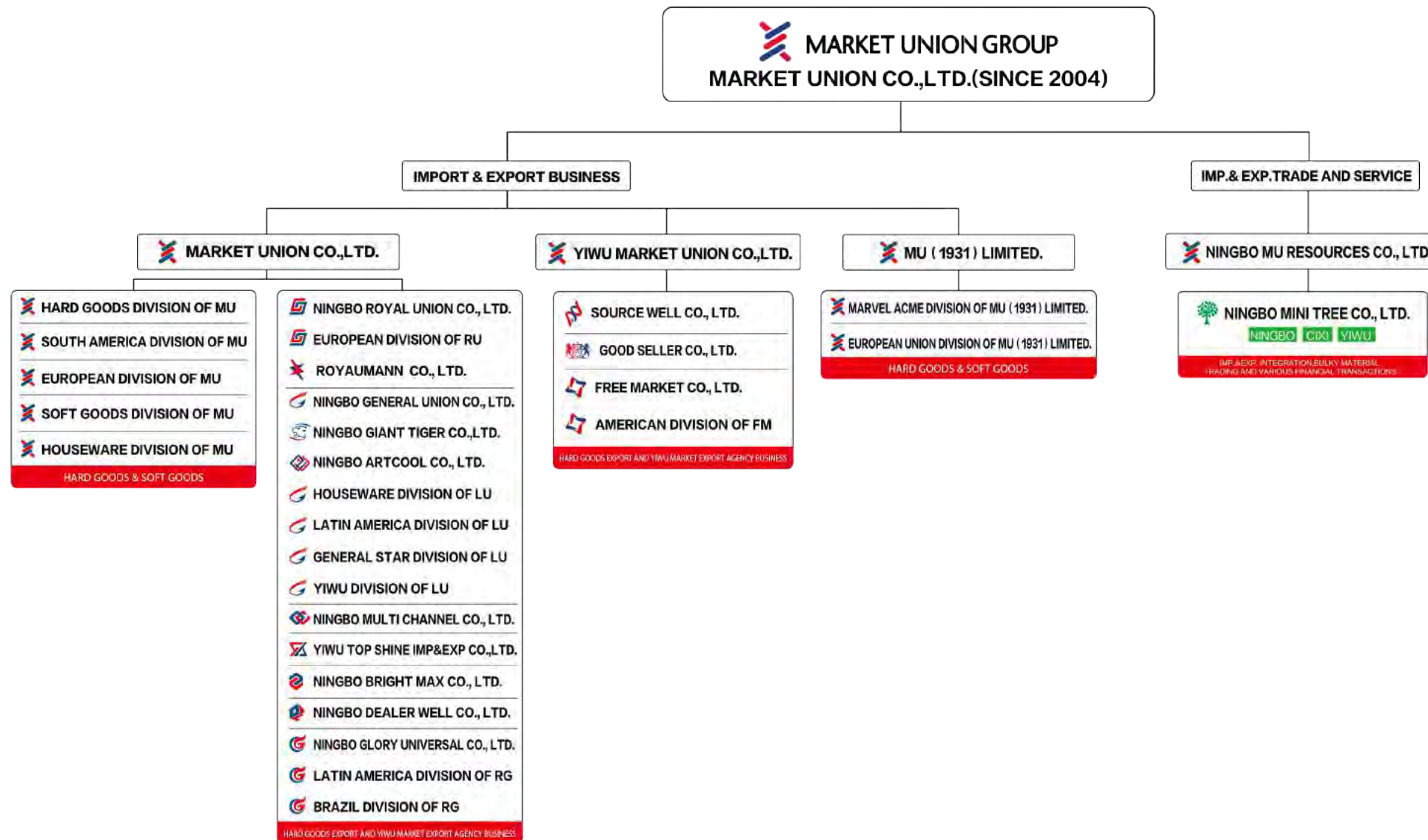
10,000+
COOPERATIVE SUPPLIERS

-  100% procurement coverage
-  70% procurement coverage
-  30% procurement coverage

Market Coverage Area



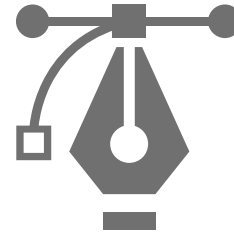
Organization



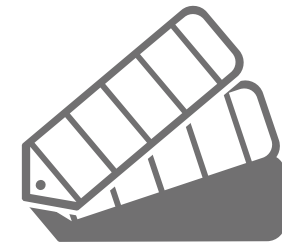
Product Development



Data collection

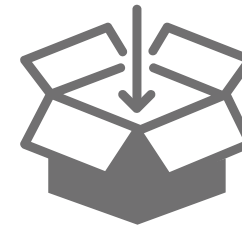


Design
proposal

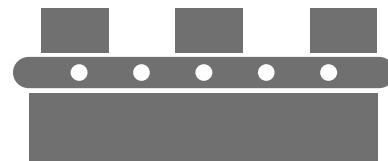


Sample proofing

A professional design team of 100 people

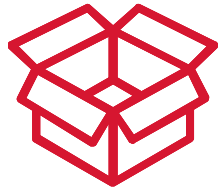


Packaging &
copywriting



Batch
production

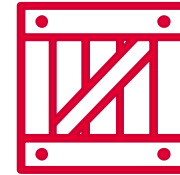
Product Customization



Package
Redesign



Branding



LCL
(Less Container Load)



Low MOQ
(Low Minimum
Order Quantity)



Barcode

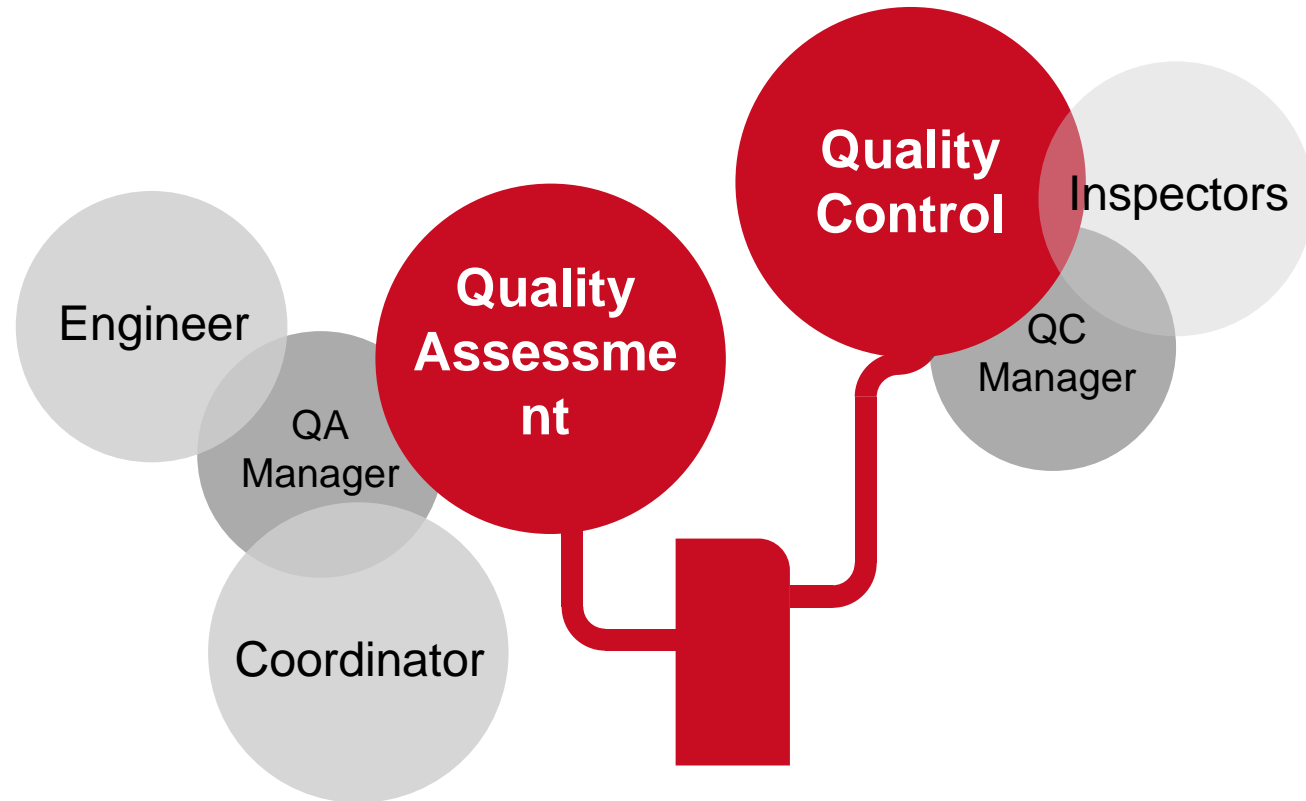


Strict QC
Inspection

Quality Management

Equipped with quality inspection laboratory and professional managers

Team Structure Quality Dept



CSR



Labor rights



Health and safety



Environment



Morality



Management system



Supervise the working conditions of the factory



Collection of factory information



Solve problems and improve factory performance

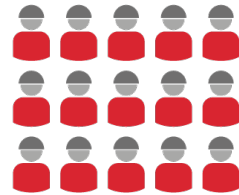


Communication and training around customer requirements

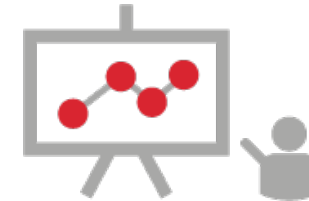
Our sustainability metrics

OUR SUPPLY CHAIN

10,000+
SUPPLIERS
WORLDWIDE



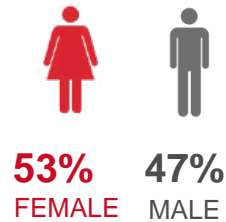
500+
TRAINING SESSIONS



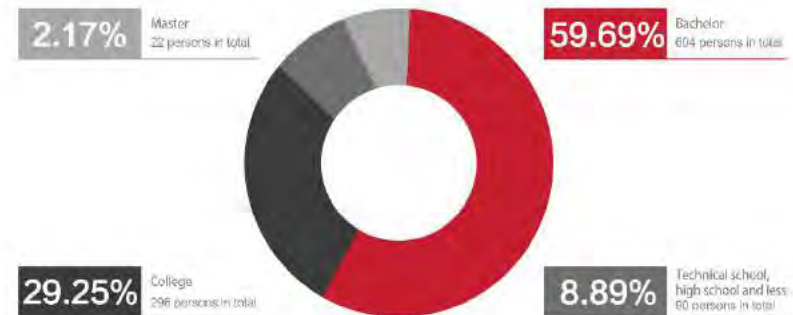
6,358 factory representatives and 2,985 employees attended

OUR PEOPLE

1000+
EMPLOYEES
WORLDWIDE



Education level Statistics



Laboratory



Warehouse



**A 17000
square meters
modernized
warehouse**

Showroom

Total display area of 10,000 square meters



Showroom

Total display area of 10,000 square meters





A professional designers team
specializing at creation and innovation !

INNOVATION, ENGINEERING & PRODUCT DEVELOPMENT



Kitchenware



Household Item



Storage



Stationery



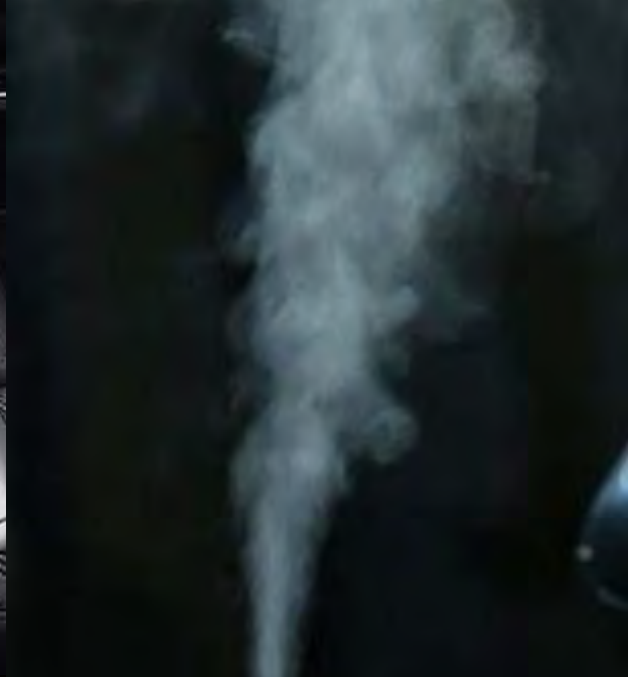
Electronic



Sports



Car Auto- Accessories



Pets



Garden



Tools



Outdoors



Bathroom



Toys



Home-Deco



Christmas





THANK YOU