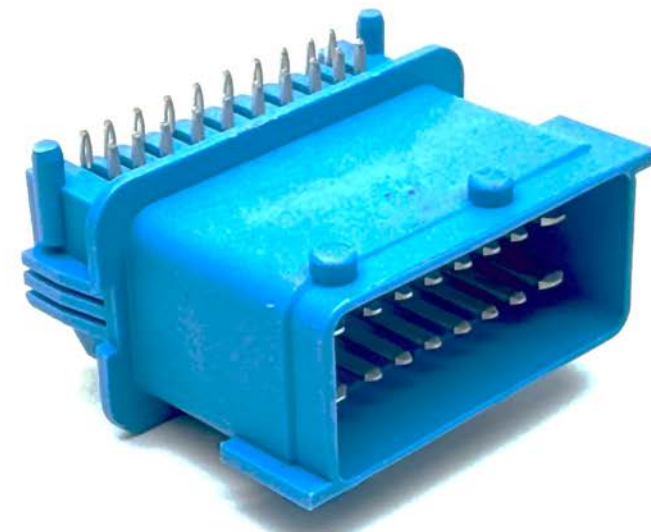
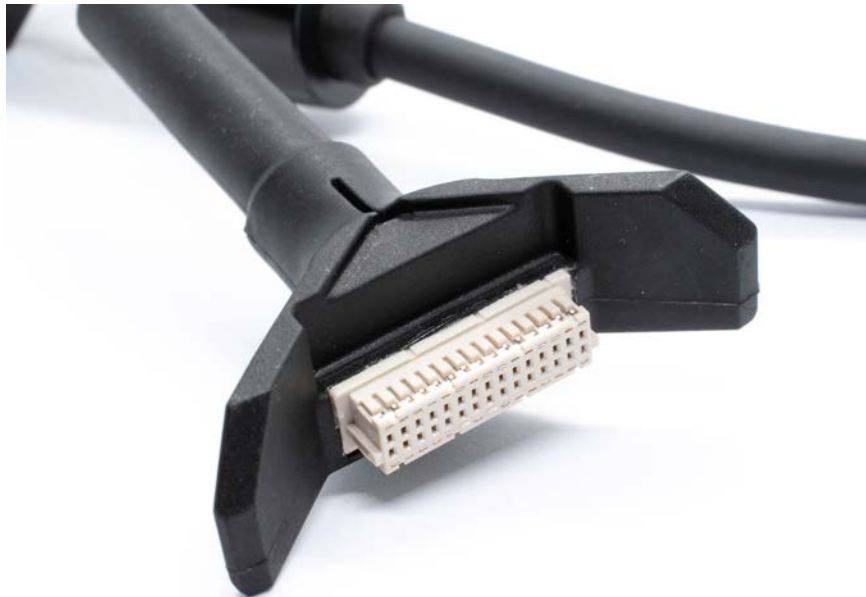




COMPANY PRESENTATION

2025-06-03



- Manufacturing Capabilities
- Introductions
 - Key customers
 - Revenue by BU
 - Quality Certifications
 - Quality Lab Capabilities
 - Advantages
- Quality Certifications
- Product Examples

Company Presentation



We are an **OEM manufacturing** factory specializing in **connectors and wire harnesses**, offering **end-to-end solutions** from **mold processing, component production to finished product assembly**. Equipped with advanced facilities, strict quality control, and extensive expertise, we deliver cost-effective, customized solutions for automotive, electronics, and industrial applications.

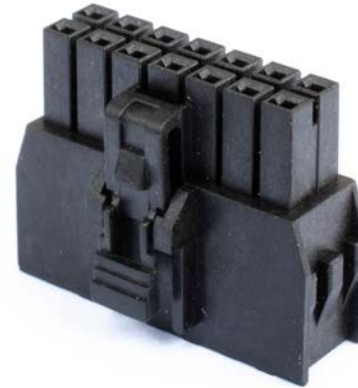


Company Presentation

Manufacturing Capabilities



Toolmaking



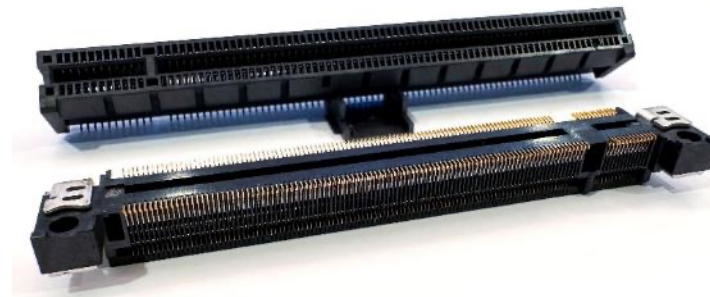
Injection Molding



Progressive Stamping



Plating



Connectors



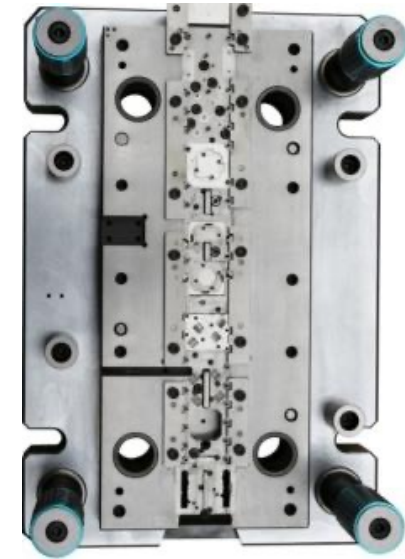
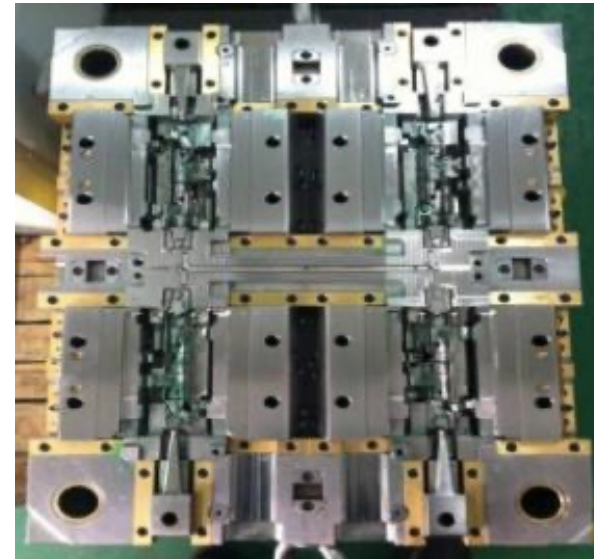
Cable Assembly

Toolmaking

Our integrated toolmaking facility is key to the production and maintenance of our dies, molds, and related tools. By keeping our tool making in-house we can ensure a consistently high-quality tools and minimize the risk of down-time.

Capabilities

- CNC milling
- Wire EDM
- Sinker EDM
- Surface grinding
- Profile grinding



Manufacturing Capabilities

Injection Molding

Our advanced injection molding capabilities are at the heart of our manufacturing process, allowing us to produce high-quality connector housings with precision and efficiency.

Capabilities:

- Injection machines
- Rotary table molding
- Overmolding (connectors and cables)
- Precision control for complex geometries and detailed features
- Experience with a wide range of materials for diverse industry applications



Manufacturing Capabilities

Progressive Stamping

Our progressive stamping capabilities are integral to precision manufacturing, allowing us to create intricate connector terminals with efficiency and precision.

Capabilities:

- Stamping machines
- Precision tooling for complex and detailed terminal designs
- Ability to work with various materials to meet diverse industry requirements



NXT-40



Manufacturing Capabilities

Plating

Our plating capabilities complement our progressive stamping to allow for us to create plated terminals in-house.

Capabilities:

- Reel to reel plating
- High thickness (>5 μin) gold plating
- Silver, Palladium Nickel, Tin

Capacity

- **Phase 1:** 6 plating lines, over 150 m length
- **Phase 2:** 10 plating lines (Q2-Q3 in 2024)

Qualified by **Molex** in Oct. 2022

Qualified by **TE** in Dec. 2022

Qualified by **Amphenol FCI** in Oct. 2022

IATF16949 & ISO14001 Qualified in Sep.2022



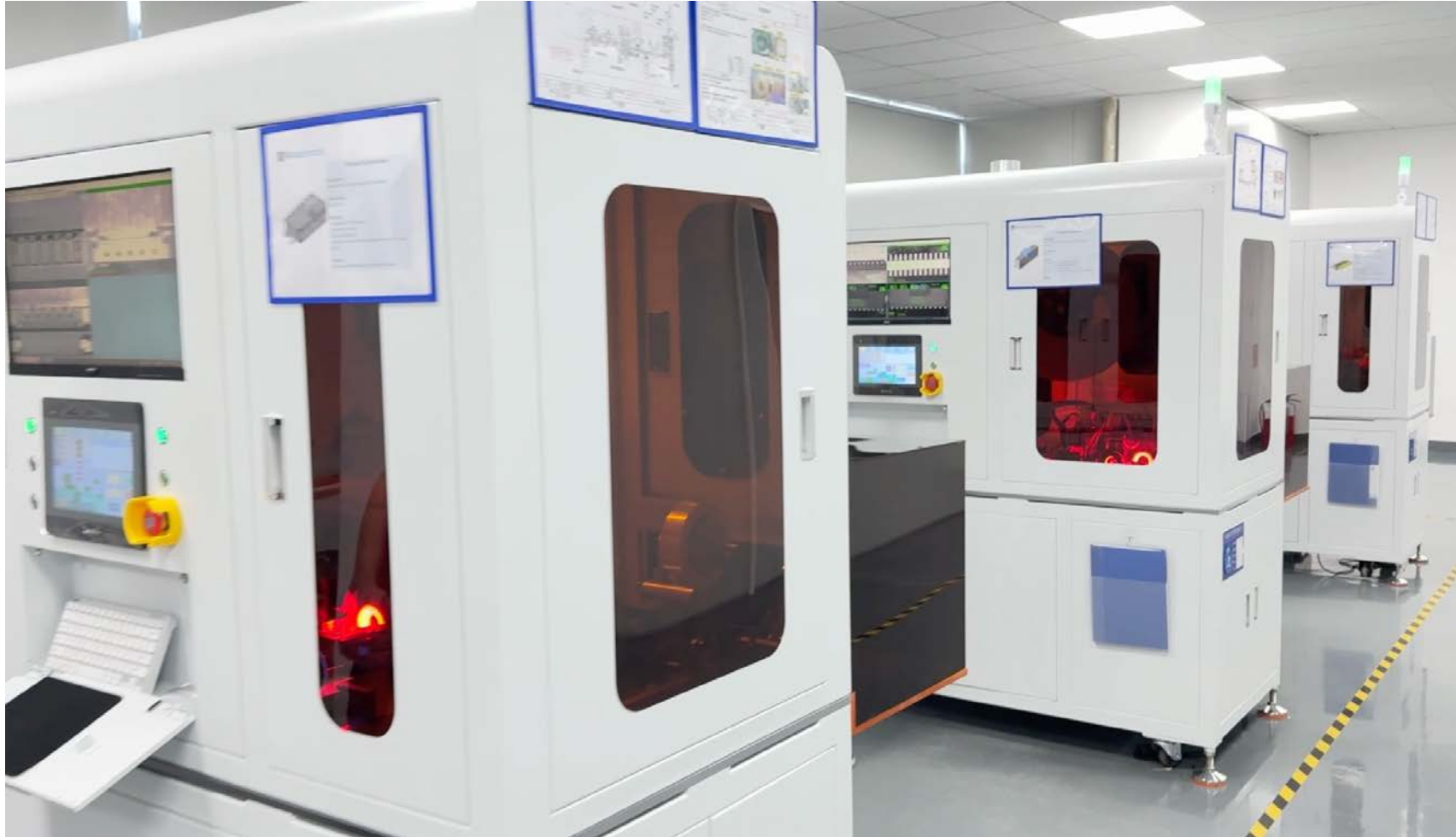
Connectors

Our specialization lies in the precision manufacturing of connectors tailored to our clients' unique specifications and designs.

Capabilities:

- Expertise in manufacturing connectors of various types, sizes, and configurations
- Flexibility to adapt to diverse industry requirements and design intricacies
- Automated assembly for high volume requirements
- Manual assembly for lower volume requirements





Connector Assembly Area

Manufacturing Capabilities

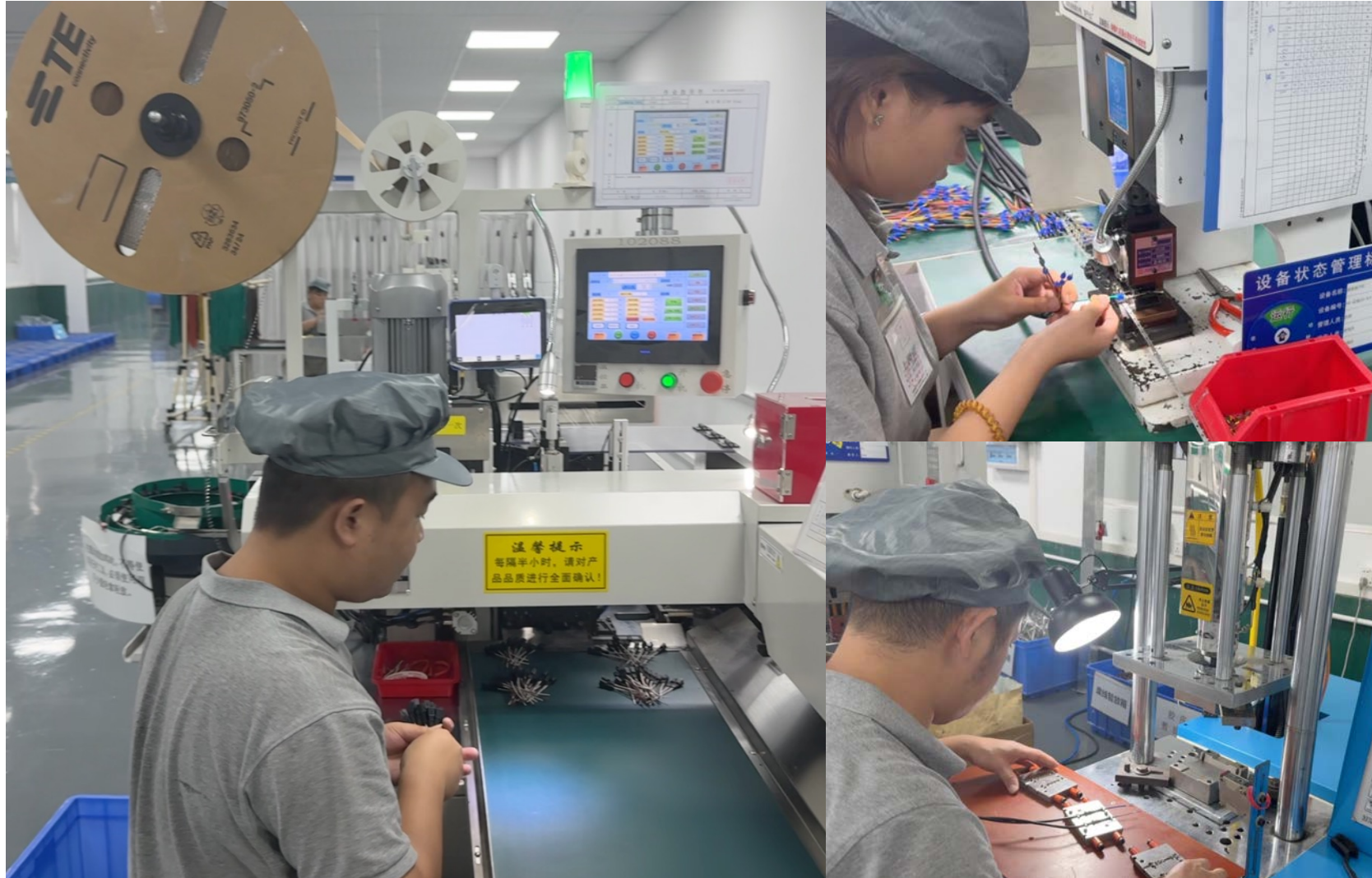
Cable Assembly

Our cable assembly capabilities, complemented by connector manufacturing, offer high quality customized connectivity solutions.

Capabilities:

- Expertise in assembling a wide range of cable types, sizes, and configurations.
- Use of high quality, customized applicators by JAM
- Overmolding to produce strain reliefs and other molded features
- Automated assembly for high volume requirements
- Manual assembly for lower volume requirements





Cable Assembly Area

Dust Controlled Environment

To meet strict customer cleanliness requirements, we have introduced dust-controlled manufacturing rooms for **connector and cable assembly**.



Additional Capabilities

Quality Lab

Our quality lab is fully equipped with the necessary tools to measure parts as well as test their functionality.

- Dimensional measurement (2.5D system, CMM, etc.)
- Electrical testing (hi-pot, insulation resistance)
- Functional testing (mating force, retention force, etc.)
- Leakage testing (IP68)
- Cross section analysis
- Plating measurement
- Environmental testing (salt spray, thermal shock, etc.)
- RoHS testing



Additional Capabilities

Quality Lab Capabilities



Insulation Resistance Tester



Hi-pot Tester



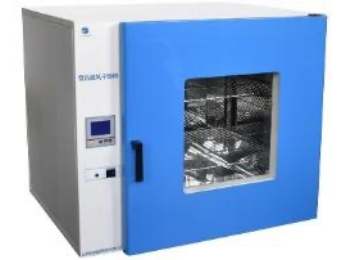
Hardness Tester



Reflow Soldering Machine



Salt-spray Tester



Constant Temperature and Humidity Machine



Profile Projector



Color difference meter



Retention Force tester



Melt Flow Indexer



Terminal Section Analyzer



Temperature Rise Tester



3D CMM



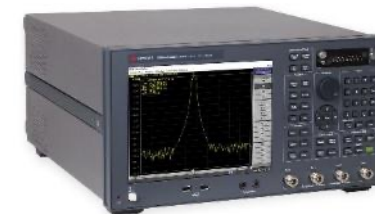
Laser Transmissibility Measurement Machine



Plating Thickness Tester



Vibration Tester



High Frequency Network Analyzer



ROHS Tester

Additional Capabilities

Project Management

Our project management team is experienced in working with our customers to take projects from an **initial concept** through to **mass production**:

- Initial project review
- DFM
- Cost analysis and quotation
- Tooling development
- Initial sampling
- Tooling improvements
- PPAP samples and documentation
- Start of mass production

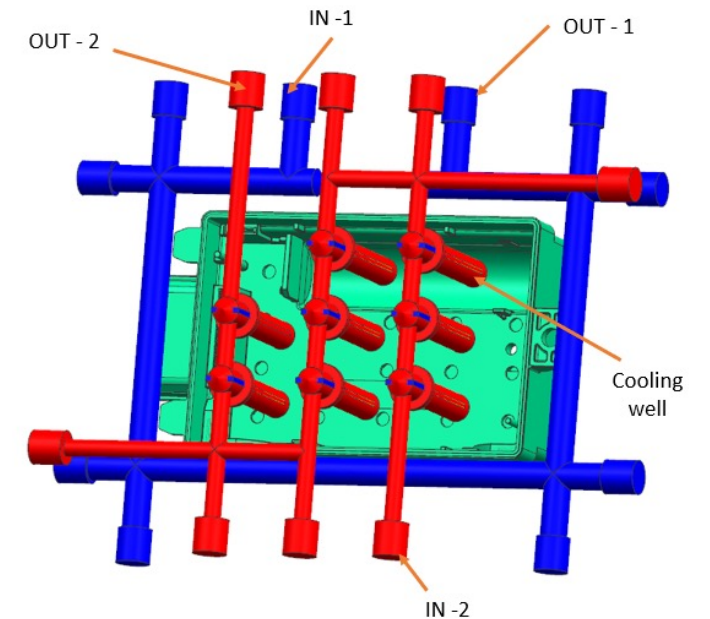
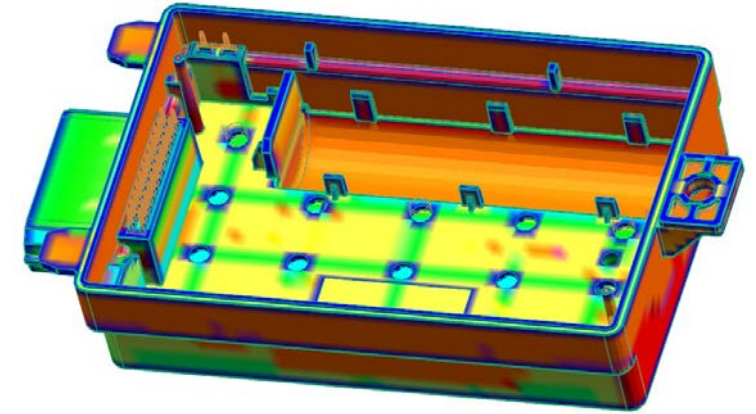


Additional Capabilities

Engineering

AK's engineering team utilizes years of experience in connector manufacturing to produce detailed DFM reports before tooling is manufactured:

- Manufacturing flow chart
- Tooling concept proposal
- Mold flow analysis
- Anticipation of potential problems
- Proposed solutions



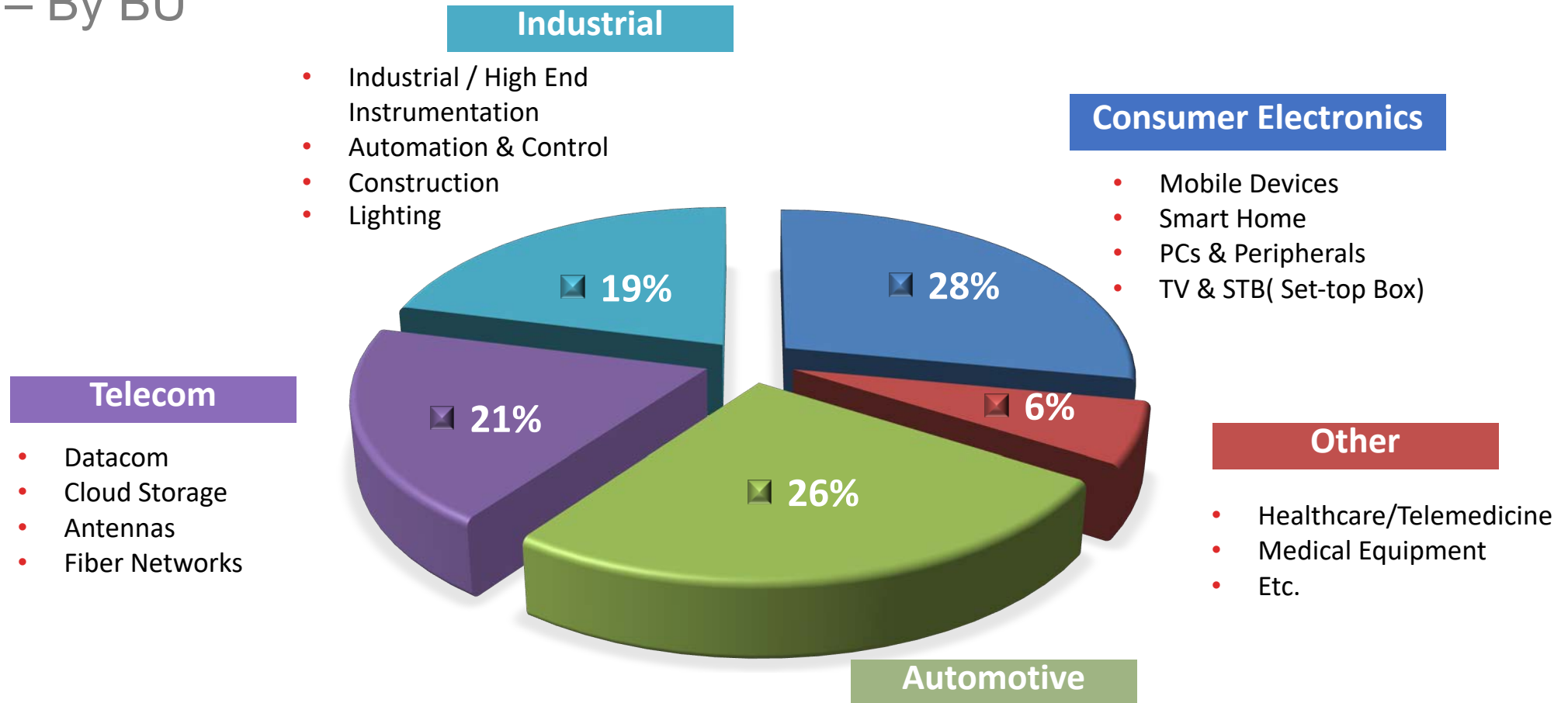
Introductions

Key Customers



Introductions

Revenue – By BU



Introductions

Quality Certifications



Professional

- Design to mass production service
- Electrical design
- Mechanical design
- Supply chain management
- Highly skilled team in interconnectivity solutions

Flexible

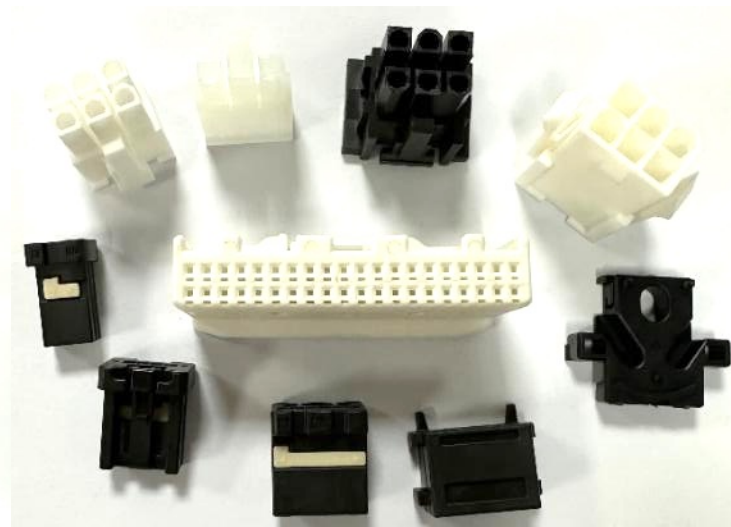
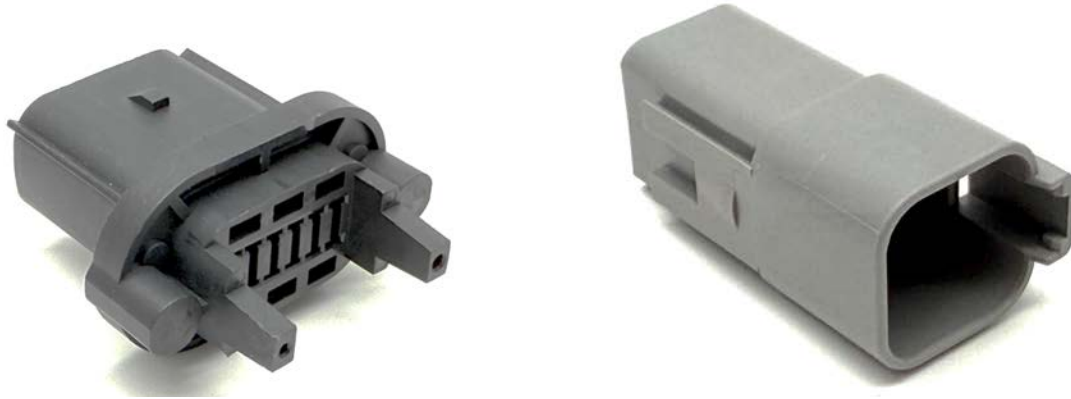
- Rapid prototyping capabilities
- Dedicated and modular molding options
- Mass production tooling in as little as 3 weeks
- High mix, low volume production capable
- Cost-effective production at facility in Inner China

Trusted

- Customer orientation
- Almost 18 years of cooperation with satisfied customers

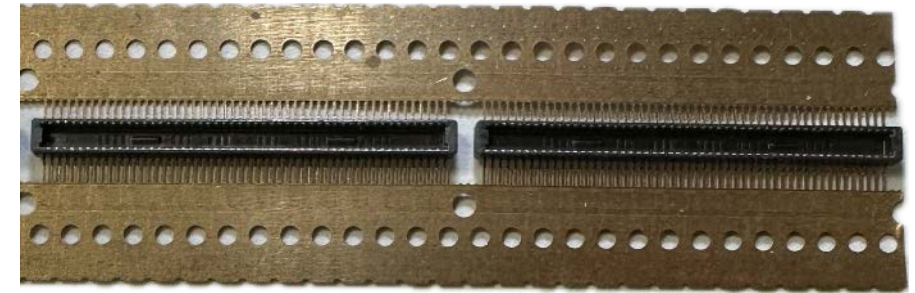
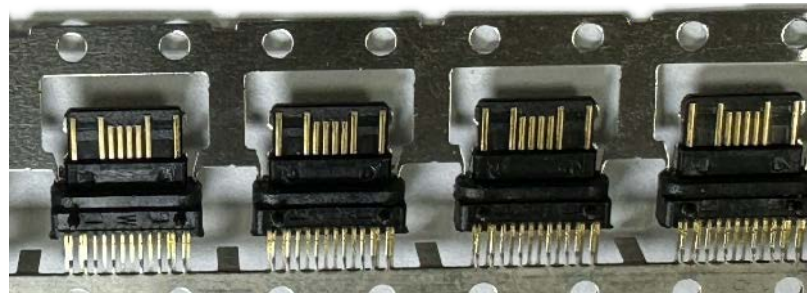
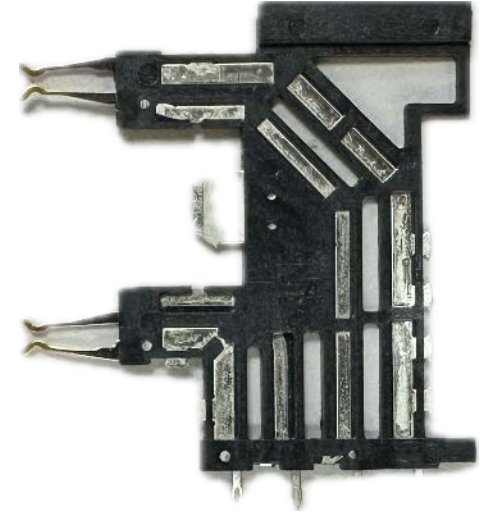
Examples

Molded Components – Automotive



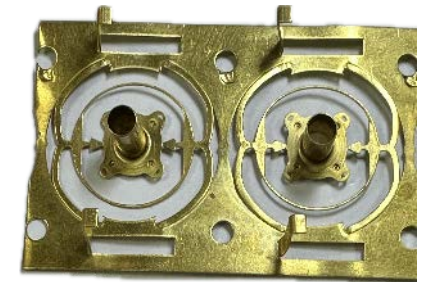
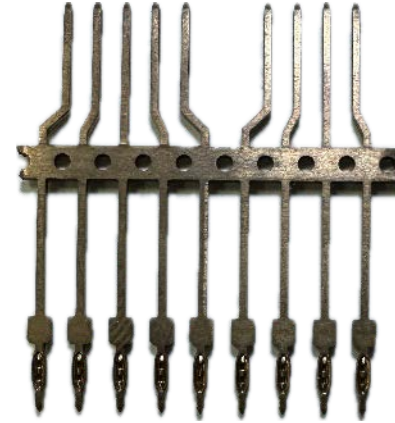
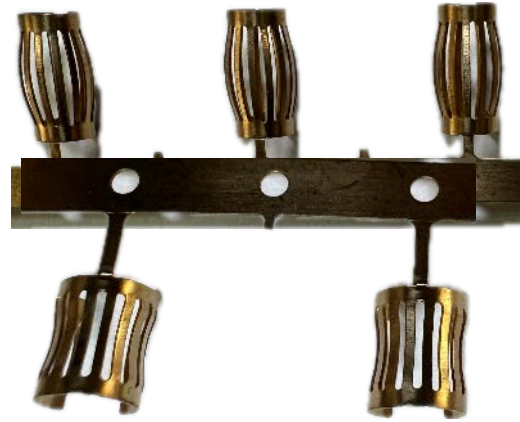
Examples

Insert Molding / Overmolding



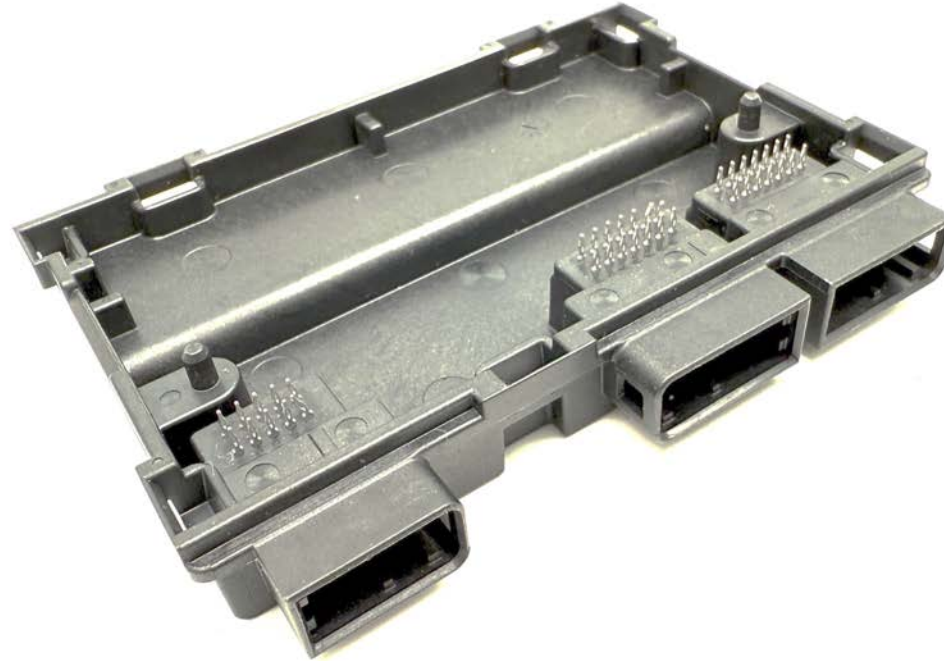
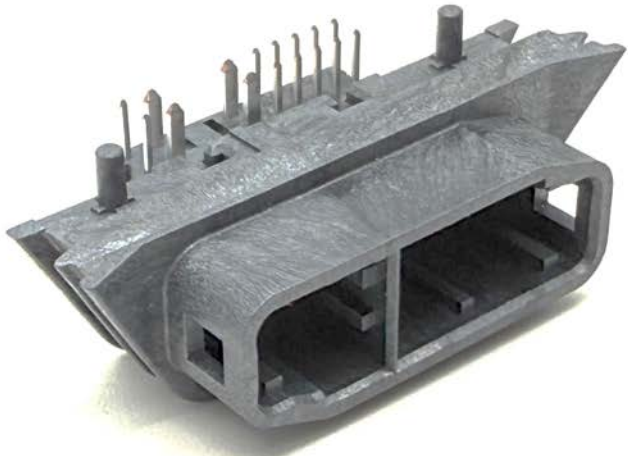
Examples

Stamped Parts



Examples

Automotive Connectors



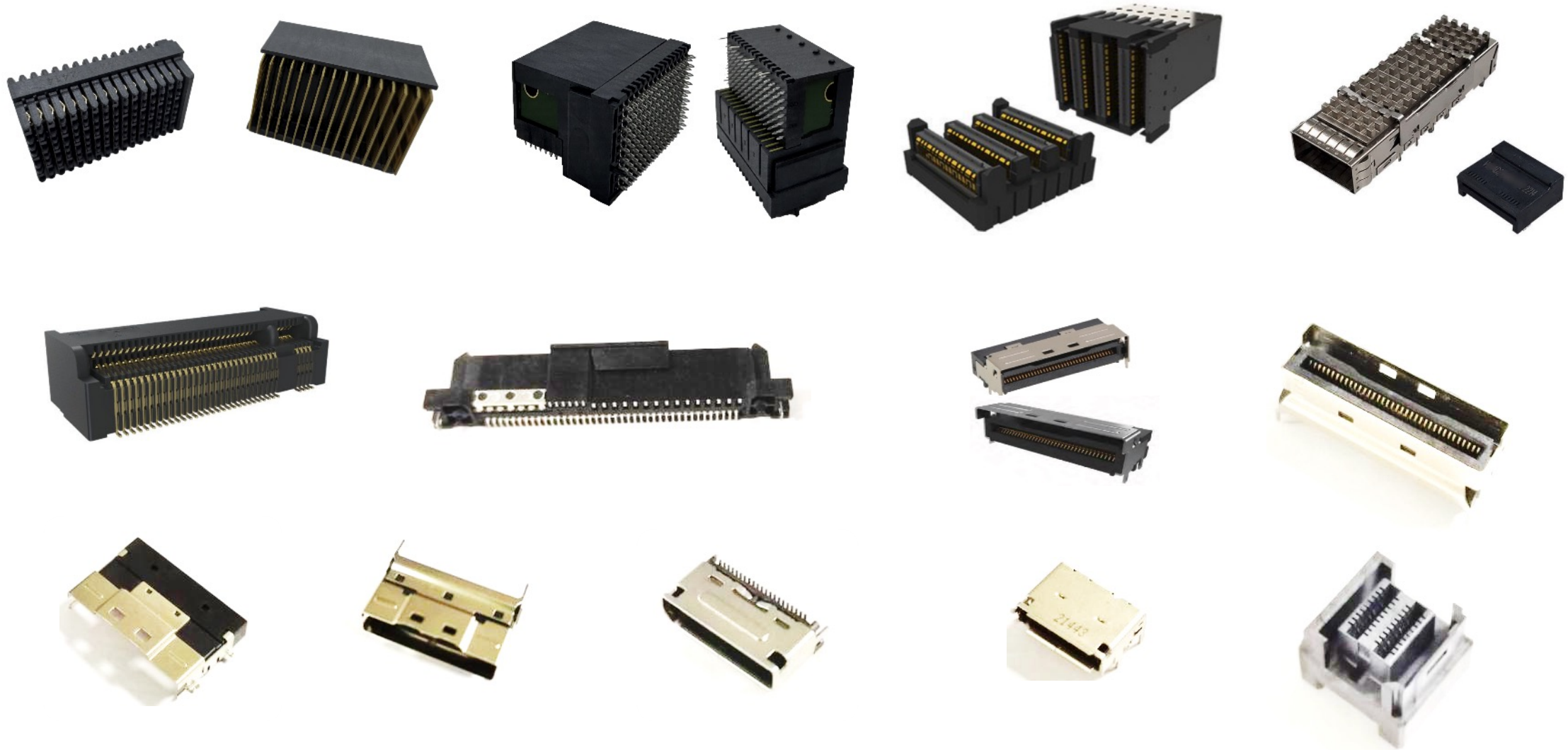
Examples

Power Connectors



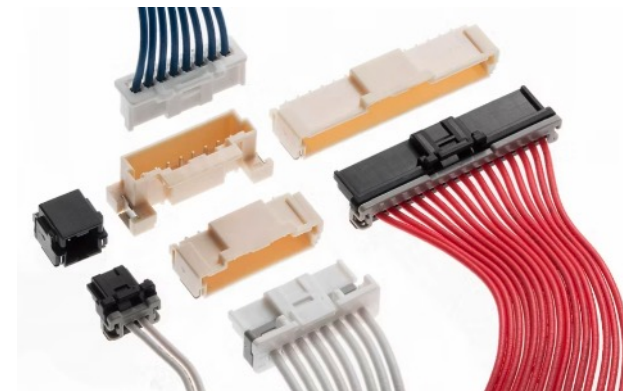
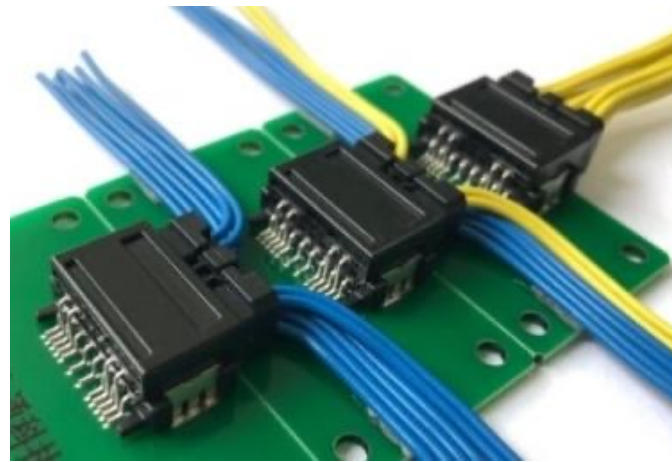
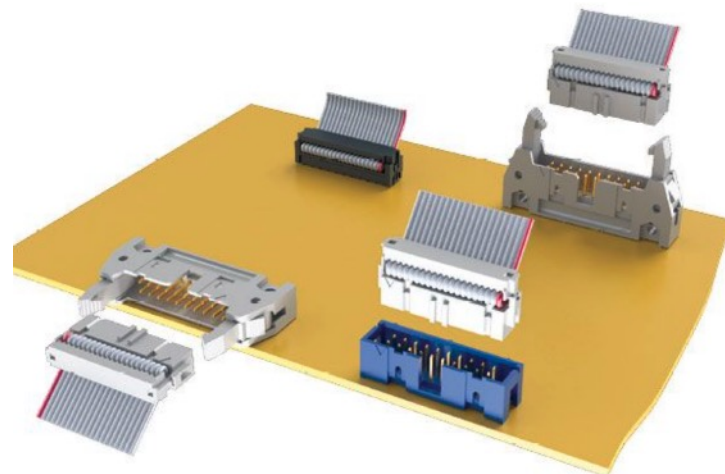
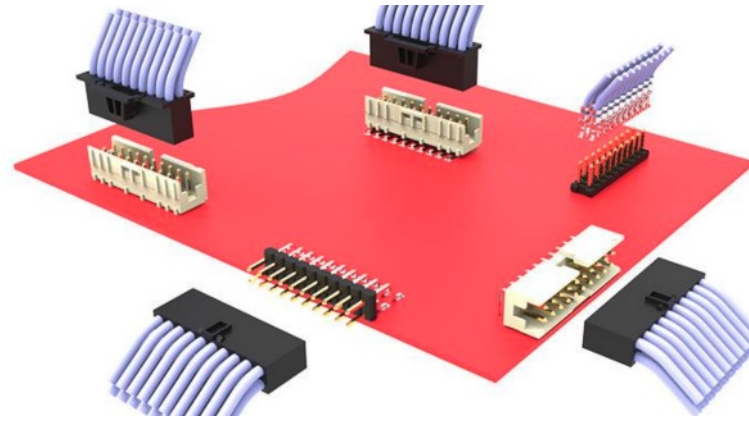
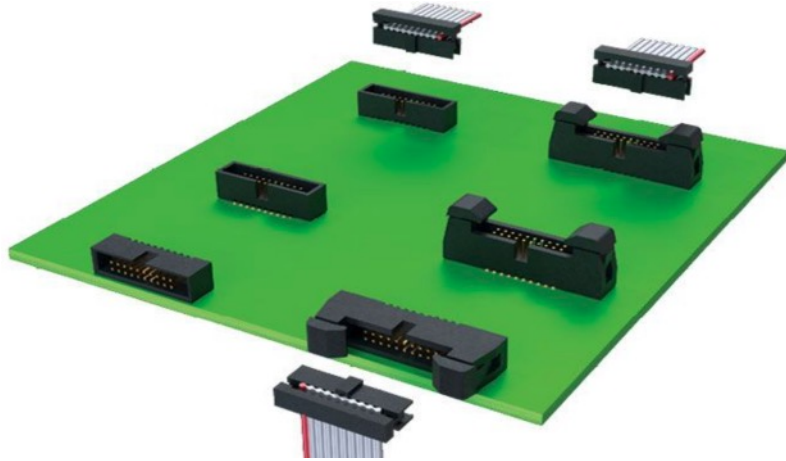
Examples

High Speed Connectors



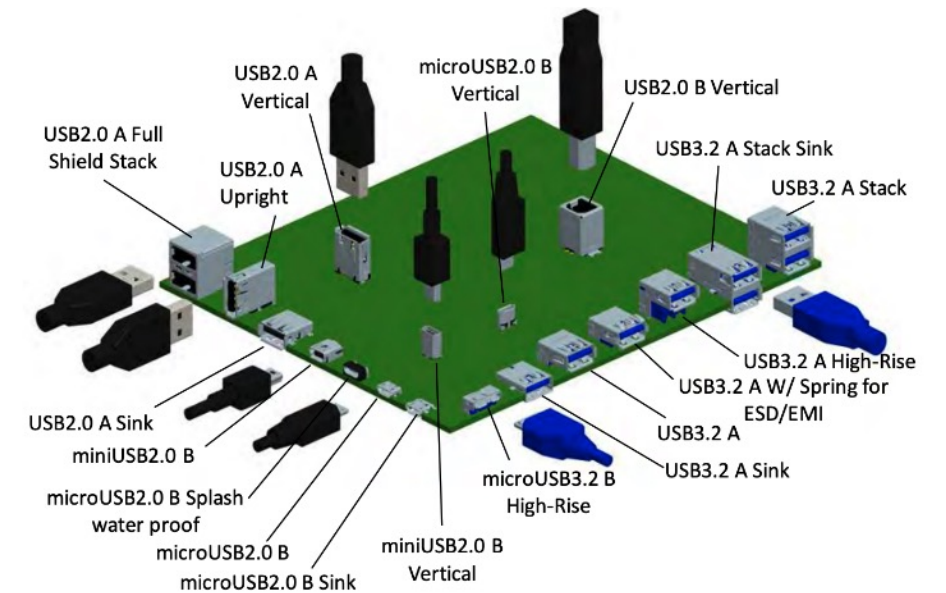
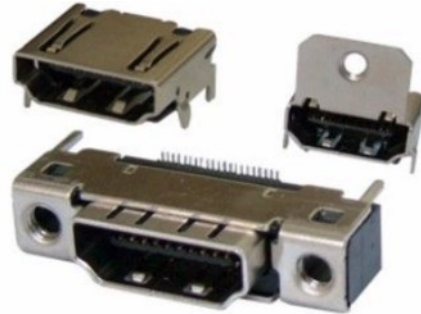
Examples

WTB Connectors



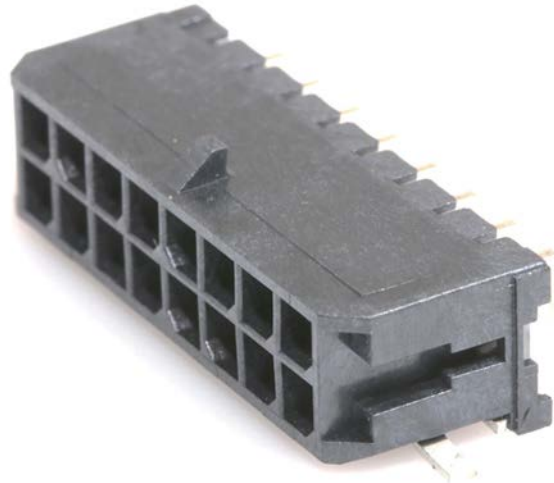
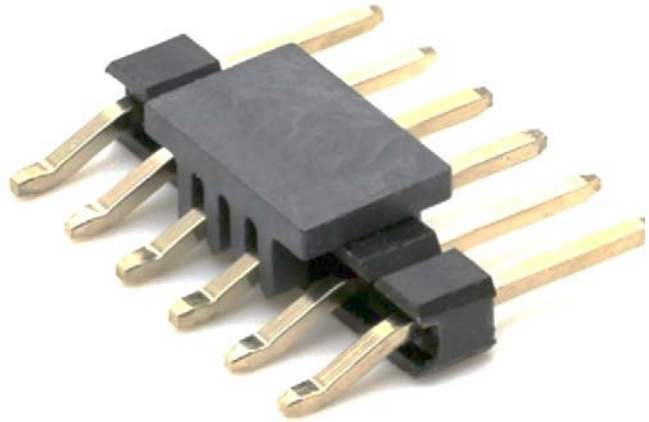
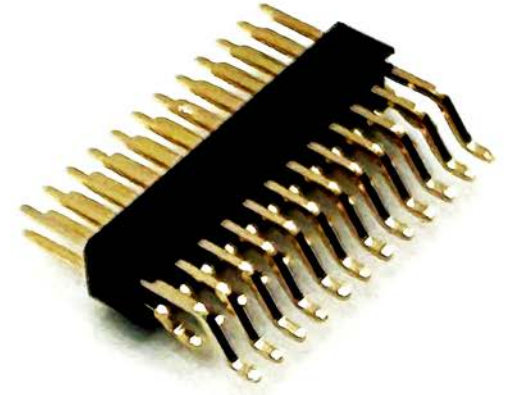
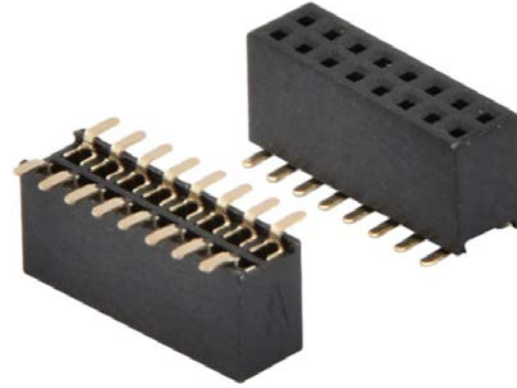
Examples

I/O Connectors



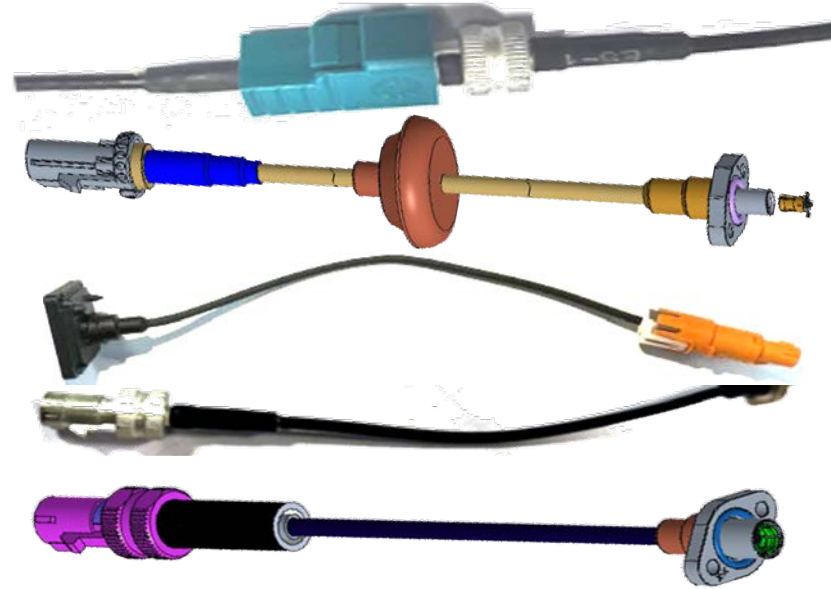
Examples

Consumer Connectors



Examples

Cable/Wire Assemblies



Thank You