

PROFESSIONAL PCB SUPPLIER

Shenzhen Lonstar Circuit Co.,Ltd.

深圳市隆信达电路有限公司





LONSTAR

深圳市隆信达电路有限公司

Shenzhen Lonstar Circuit Co., Ltd. was established in 2010. we are a leading company in printed circuit board. During the 13 years of developing with digigent efforts, our PCBs are widely used in security, industrial control, communication device, medical equipment, automotive electronics and other fields. Mainly of our customers are in Europe and America. Lonstar has won high appreciate and reputation from our customers with good credit. And we also provide professional one-stop solution service for our customers from PCBs to components and assembly..

Our company have passed UL、ISO9001、TS16949、ISO13485 certification. With the base of high class management and quality system, Lonstar are able to supply high quality PCb&PCBA for our clients as always.



/ Company Profile



Shenzhen Lonstar Circuit Co., Ltd. was established in 2010. we are a leading company in printed circuit board. During the 13 years of developing with digigent efforts, our PCBs are widely used in security, industrial control, communication device, medical equipment, automotive electronics and other fields. Mainly of our customers are in Europe and America. Lonstar has won high appreciate and reputation from our customers with good credit. And we also provide professional one-stop solution service for our customers from PCBs to components and assembly.

Shenzhen Lonstar Circuit Co.,Ltd.



高品质
High Quality



价格优
Excellent Price



交期短
Short Term



响应快
Fast Response

/ Production Equipment



Laminating Machine



Etching Line



PTH Line

Precision manufacturing
High efficient
High quality

精密制造 高效高质



200,000r/min Drilling Machine

/ Production Equipment



Automatic Dry Film Machine



Automatic E-test Machines



Inner Layer DES (Developing, Etching, Stripping) Line

Precision manufacturing
High efficient
High quality

精密制造 高效高质



CCD Exposure + CCD LED Line Exposure

/ Erp System

Precise and efficient informatization management



Prompt service help customer seize opportunity



响应快速全面
Quick Response



专业技术支持
Technical Support



查询即时状态
PO Status Inquiry



货运服务一流
Famous Forwarders

/ Market Distribution



Europe: Germany, France, Italy, Britain, Sweden, Norway, Hungary, Turkey, Slovakia, Spain, Slovenia, etc.

America: United States, Canada, Brazil, Mexico.

Asia: Japan, Singapore, Israel.

Africa: South Africa.

Oceania: Australia.



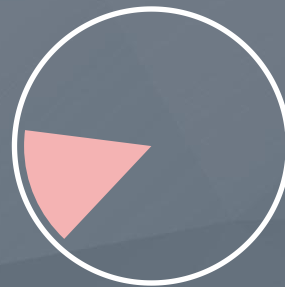
52%

Europe



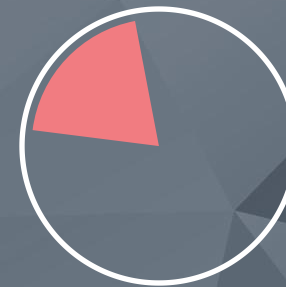
13%

America



12%

Asia



20%

China



3%

Others

/ PCB Manufacture **Ability**

Supply satisfactory products for various industries

Material	CEM-3, FR-4(Normal to High Tg), High CTI FR-4, PolyImide(PI), Aluminum Base, Ceramic, Rogers
Surface finish	HASL Leadfree, HAL, ENIG, Chem Tin, OSP, Gold Finger, Immersion Silver, ENEPIG
Min. Core thickness	4mil/0.1mm
Layer	1-30L
Max board size	22.8X47.2inch/580X1200mm
Copper thickness	Min. base copper 1/4Oz
	Max. base copper 6Oz
Min. Track Gap/Width	3/3mil
Min. vias	0.1mm
Max. aspect ratio	12:01
Hole size Tolerance	± 0.075 (PTH) ± 0.05 mm(NPTH)
Max.board thickness	6.0mm

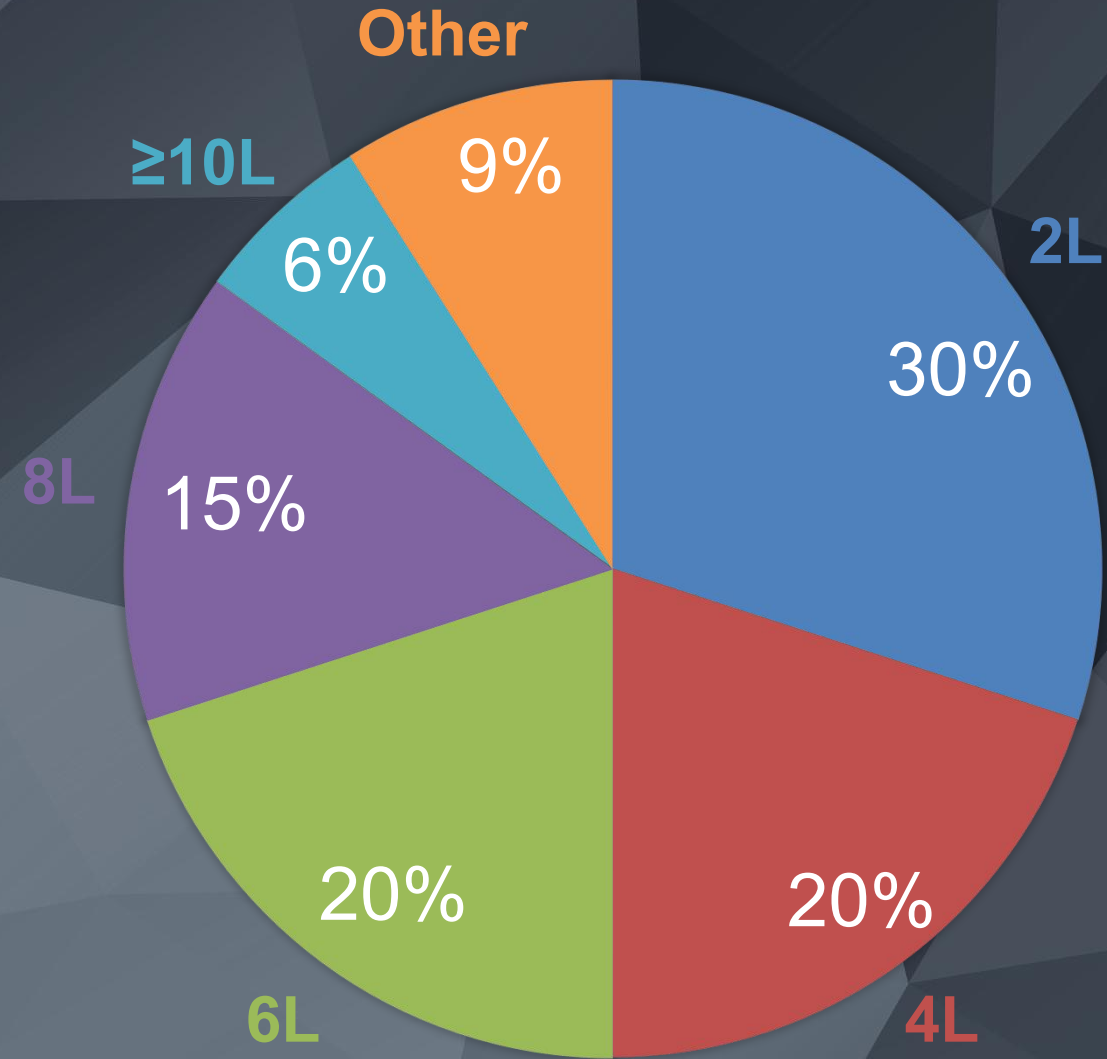
/ PCBA Manufacture **Ability**

Supply satisfactory products for various industries

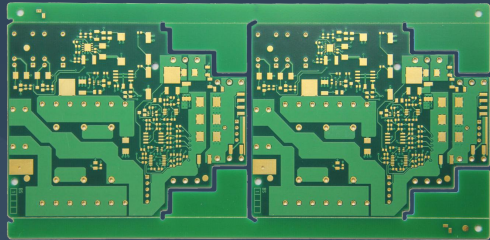
PCB Dimension	Min. 50*40*0.38mm/Max. 600*400*4.2mm
PCB Material	CEM-1, CEM-3, FR4, Rogers, Al base, FPC
Chip & IC size	Min. 0201(0.5*0.25mm) Max. 55mm
BGA spherical distance	$\geq 0.25\text{mm}$
BGA Globe distance	$\geq 0.25\text{mm}$
Electrical testing	AOI (Automated Optical Inspection)/X-ray Inspection
	ICT (In-Circuit Test)/ Functional test
BGA ball diameter	$\geq 0.1\text{mm}$
IC foot distance	$\geq 0.2\text{mm}$
Component Package	Reels, cut tape, tube tray, Loose parts and bulk

/ Product Structure

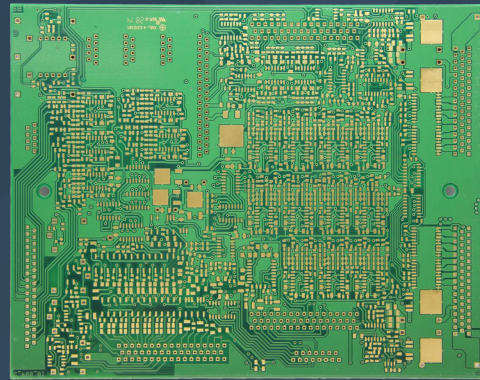
First-class manufacturing equipment, efficient production organization set-up, high-standard quality assurance system-creates a dominant position of market competition



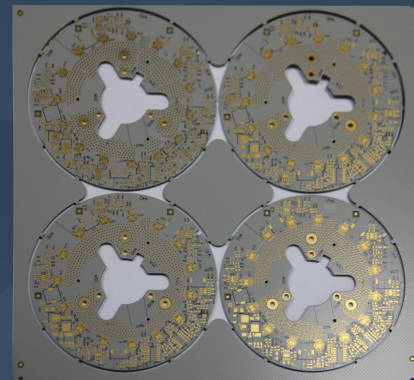
/ Products Show



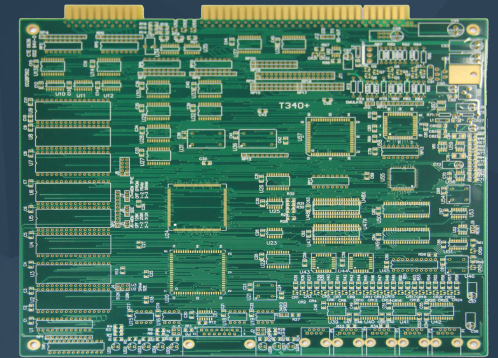
8L ENIG PCB



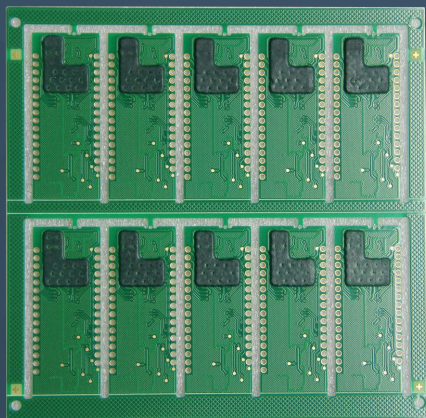
10L HDI PCB



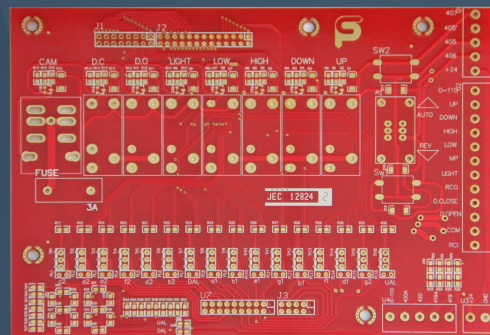
Al base PCB



Gold Finger PCB



Peelable PCB



Red 6L PCB

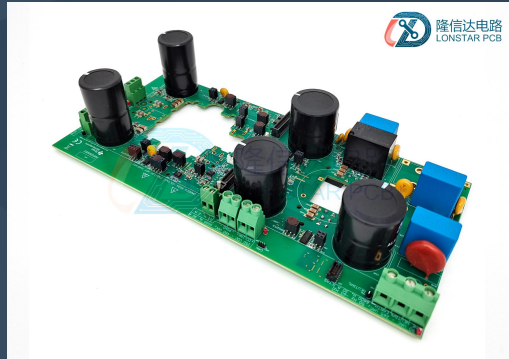


Black PCB

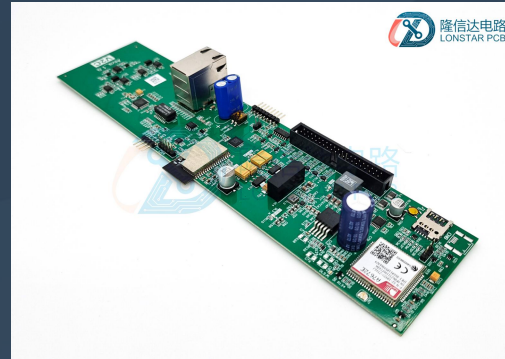


Flex PCB

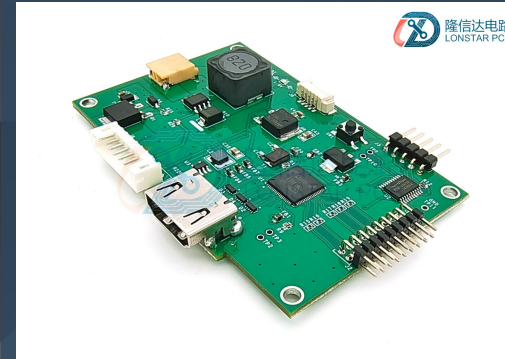
/ Products Show



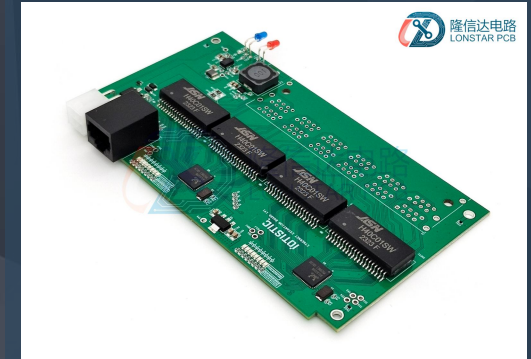
Automotive PCBA



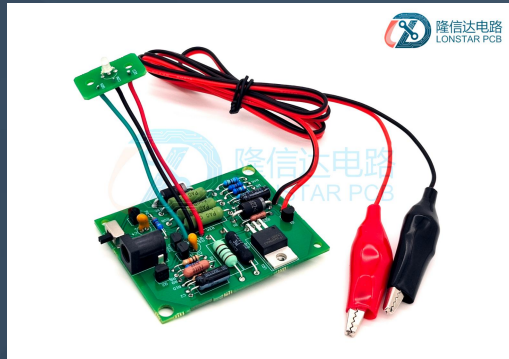
Automotive PCBA



Communication Device PCBA



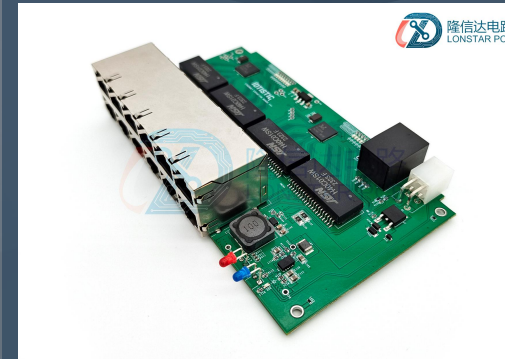
Industrial Control PCBA



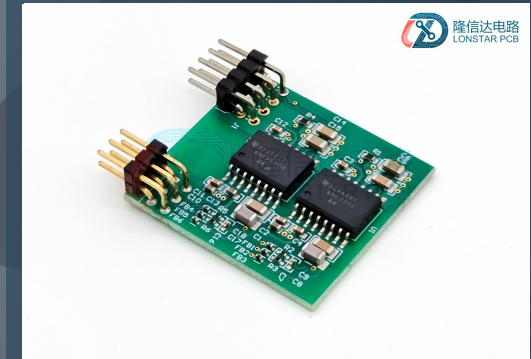
LED lighting Control PCBA



Automotive Audio PCBA



Speed Control PCBA



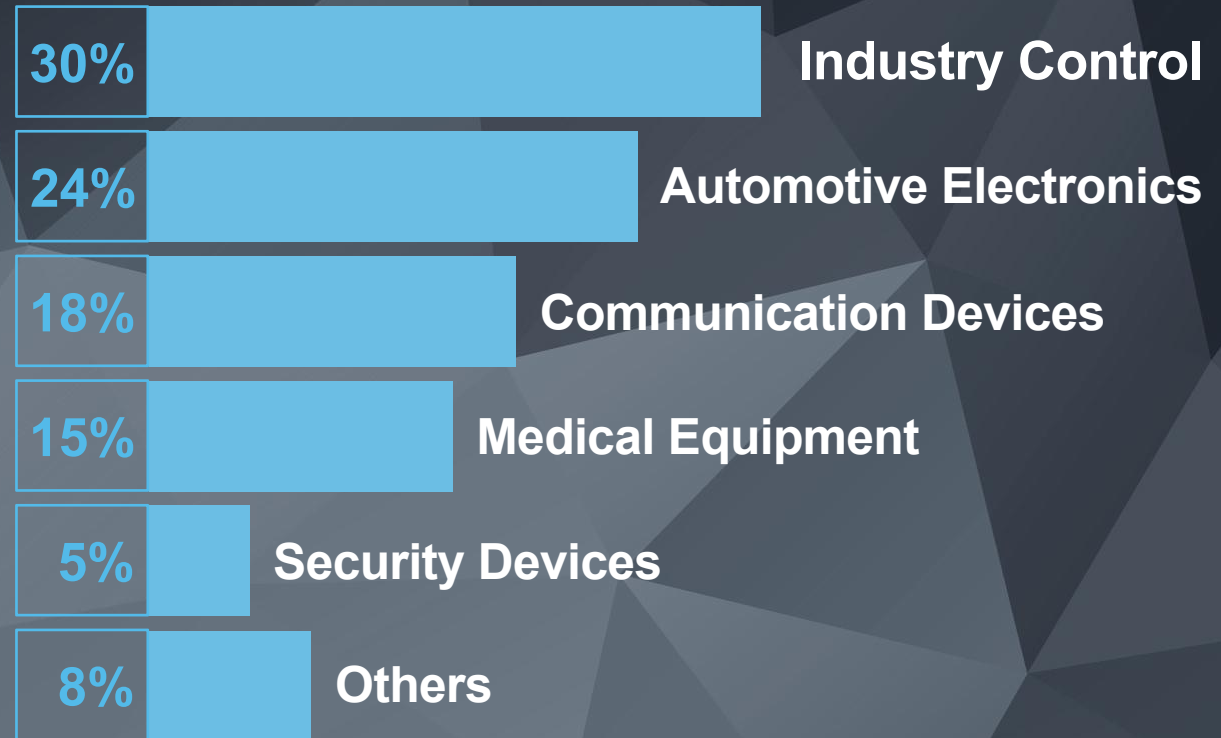
Consumer Electronics PCBA

/ Application Field



Market Share

We provide products and services in a variety of fields.





**Many Quality first, Credit upmost,
Continuous improvement and customer
satisfaction.**

/ The Happiest Company

**We are a group of team with full
of dreams and passions,
dedicated, innovative,
pragmatic and efficient, gather
to manufacture first-class
products and create first-class
enterprise.**

深圳市隆信达电路有限公司


LONSTAR



Address: #1021, Yanhe South Road,
Nanhu Street, Luohu District, Shenzhen, 518002.

THANK YOU