



Company brand promotion

Company Brand
Promotion



CONTENTS

01

Company Profile

02

Production scale

03

production process

04

Collaboration Cases

05

Product Introduction



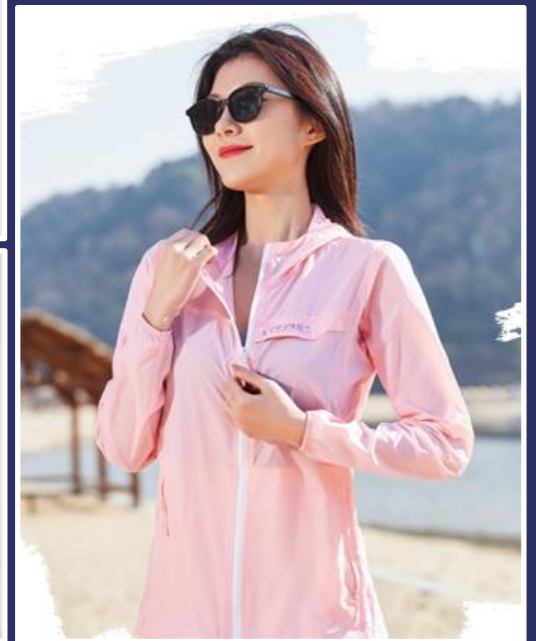
Company Profile

Company Purpose | Mission | Value

At present, the company mainly provides personalized customization services to customers through online and on-site methods, tailoring suits, shirts, etc. To provide one-stop clothing design customization for the pursuit of fashion, comfort, taste, and showcasing personal charm.

- ◆ Company Purpose: To provide thoughtful customized services for every enterprise.
- ◆ Company mission: To provide each employee with a set of work clothes they like.
- ◆ Company value: Providing customers with fast and customized services, enabling them to have their own identity in a short period of time

Comfortable and beloved clothing, avoiding consumer doubts about the appearance design, color, quality, and other aspects of clothing.



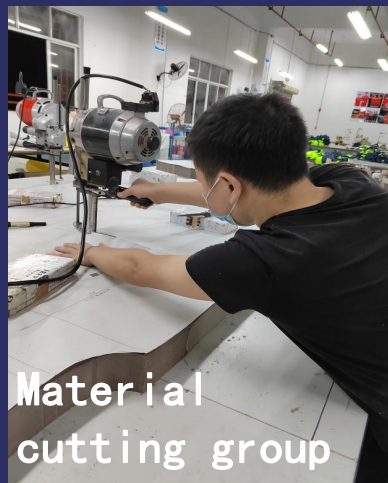
Production scale

Production scale and standardized production assembly line

Our company continuously adjusts its business strategy based on market demand, striving to improve its production and processing base. Through large-scale and standardized production lines, we ensure timely completion of the task of "large-scale" clothing production, and strive to achieve professional standards in the design and production, pre-sales, in sales, after-sales service, and other aspects of work clothes and professional clothing. Over the years, the company has not only conducted in-depth research on clothing styles and the different functions of clothing fabrics; Moreover, there are established solutions for professional issues such as collective clothing measurement and distribution. So far, we have provided professional clothing customization services to many well-known enterprises both domestically and internationally, helping customers establish a good and unique corporate image. At the same time, we also look forward to working together with more enterprises in the future to create a more professional corporate image, so that "United Clothing" can add beauty to every enterprise.



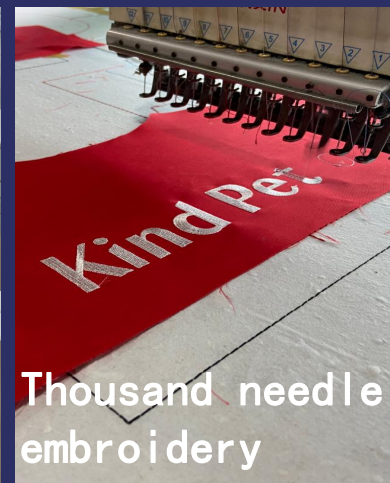
Workshop



Material cutting group



Skilled worker



Thousand needle embroidery

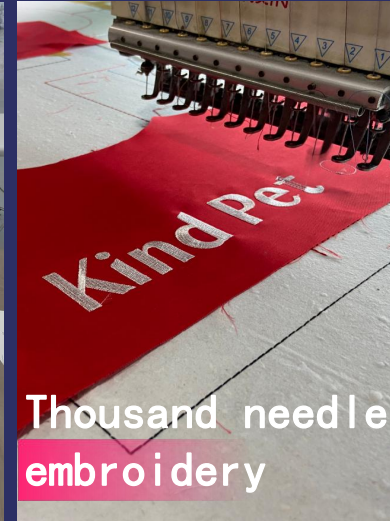


Imported embroidery machine

Production scale

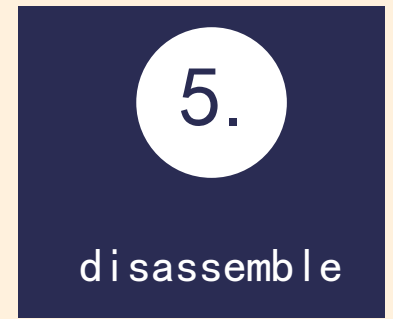
Production scale and standardized production assembly line

Quanzhou Huangbo Group Co., Ltd. looks forward to providing the best personalized system solutions and high-quality clothing for customers in different fields. All employees of the company warmly welcome customers from home and abroad to come and negotiate and cooperate. The company's annual gross domestic product is about 100 million yuan, with a monthly production of over 300000 pieces and an annual output of over 3 million pieces. It can simultaneously undertake the clothing customization needs of multiple small and large enterprises, with a delivery rate of 100% on time, a delivery rate of 98% based on quality and quantity, and a customer satisfaction rate of 98%.





Production process >



Sewing determines the design goals and style based on customer needs and brand positioning, draws design drawings, expresses design concepts and creativity, refines design drawings, including fabric, color, decoration and other elements, and conducts material procurement and budget evaluation based on the design drawings.

Based on customer needs, select the appropriate fabric category, determine fabric quality, consider its comfort, functionality, durability, and appearance effects, screen and compare fabrics, and choose appropriate colors and textures.

Produce sample clothes according to the determined design and fabric.

Prepare sample clothes for delivery/confirm on-site with customers to produce according to the sample clothes, and issue a confirmation sample clothes signature form;

After the customer confirms the sample clothing, they can use the final design draft or the sample clothing confirmed by the customer to split and cut the order fabric in a 1:1 equal ratio according to the split clothing components.



Purchase fabric based on the sample clothing or design draft fabric determined by the customer.

Detect color fastness, shrinkage rate, etc.

Based on sample clothing/design drafts and purchased fabrics, prepare for cutting using professional cutting equipment to ensure accuracy and efficiency. Classify and mark the cut fabrics for subsequent sewing processes.

For clothes that involve logo/pattern printing, the printing/embroidery/ironing should be completed in the designated position before sewing.

Using professional equipment for sewing, ensuring straight, even, and firm stitches, and promptly adjusting and improving any problems that arise during the sewing process. Commonly used equipment during the sewing process includes: sewing machine, flat sewing machine, buttonhole machine, and button machine.

11.

Loose
Thread

Inspect the sewn clothes and cut off excess threads and repair any defects. Ironing: Ironing sewn clothes to eliminate wrinkles and burrs, selecting the appropriate ironing temperature and pressure based on the fabric characteristics to ensure the comfort and appearance of the fabric.



12.

inspect

Inspect the finished product, including size, style, logo, quality evaluation, etc., to ensure compliance with relevant standards and customer requirements. Rectify any problematic or non-compliant products.

13.

pack

The inspected products are stacked according to the folding requirements and packaged.



14.

Shipment

Loading and shipping

Common devices:



Flat car pictures



Han car pictures



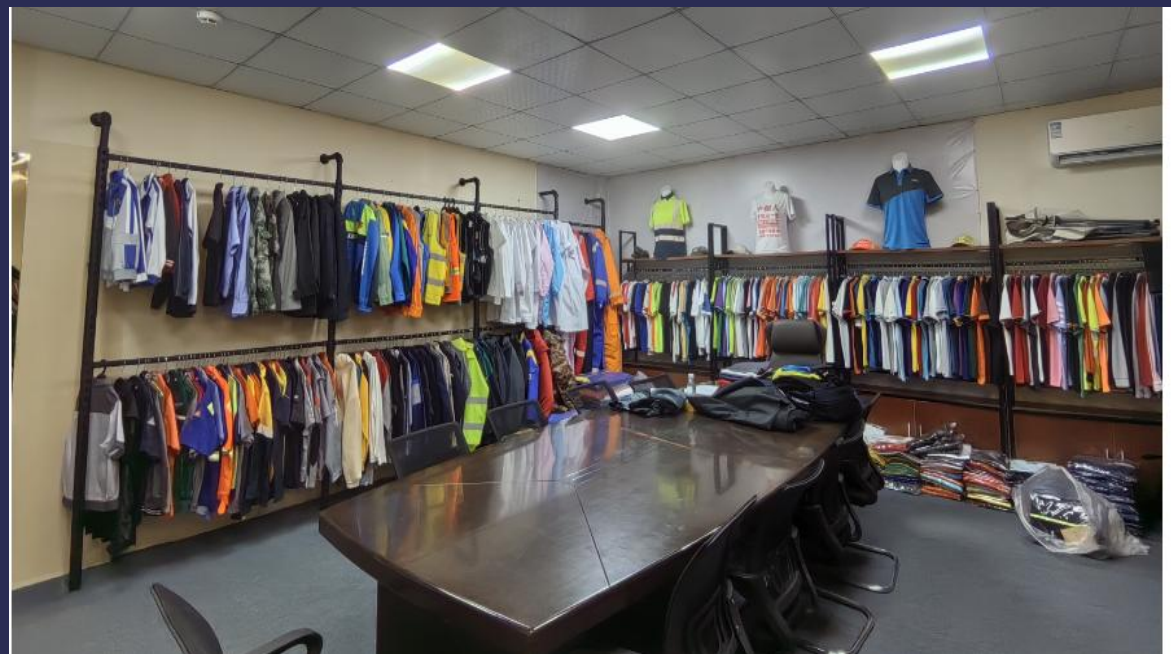
Cutting bed

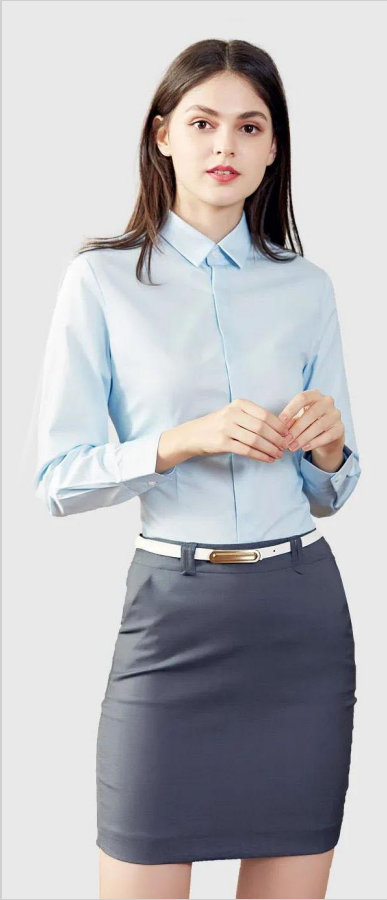
Collaboration Cases

Our main clients for cooperation with our company include: Jeep, Shenzhen Metro, Gree, Huawei, China Petroleum, ZTE Express, Midea, Sound Environmental Sanitation, China Electric Power Construction, Jiashiduo, and other large and powerful enterprises. Each enterprise employs tens of thousands or tens of thousands of employees, which is a huge batch of tooling demand customers.

Our company's tooling customization involves industries such as electricity, petroleum, auto repair, express delivery, catering, environmental sanitation, construction, home appliances, technology, and cultural shirts for various small and medium-sized enterprises.







Product Introduction

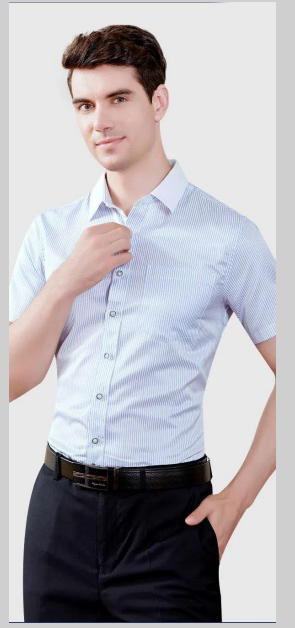
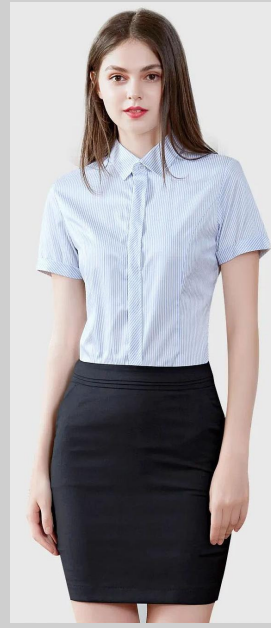
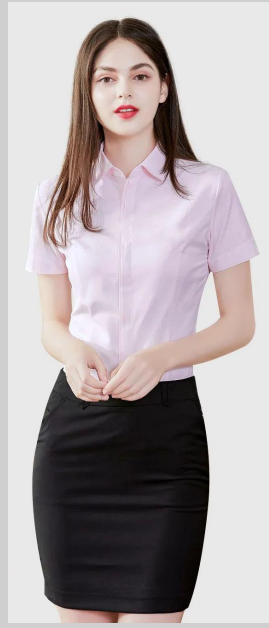
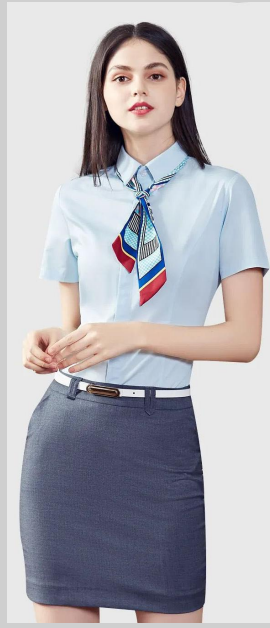
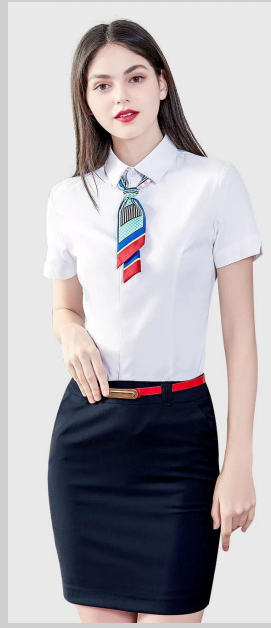




Shirt suit >



Shirt collection

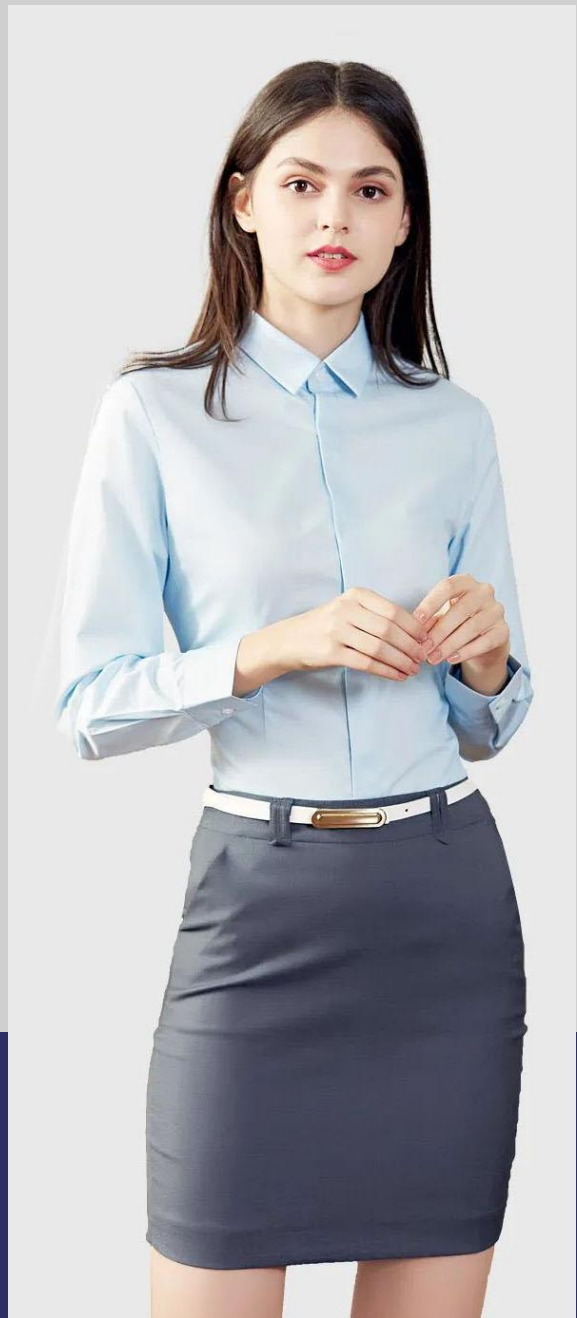


Short sleeve



Long sleeved

Liquid ammonia ironless shirt series



Bamboo fiber non ironing shirt





T-shirt collection



Selective Color



more style



	size	M	L	XL	2XL	3XL	4XL
size chart	Shoulder width	49.5	51.5	54.5	57.5	60.5	63.5
	Clothing length	72	74	76	78	80	82
	Chest circumference	50	52	55	58	61	64
	Sleeve length	22	22.5	23	23.5	24	24.5



POLO series ▶

Multiple colors



more style 

	size	S	M	L	XL	2XL	3XL
size chart	Shoulder width	38	40	42	44	46	49
	Clothing length	65	67	70	73	76	80
		43	45	48	51	54	57
	Chest	155-160	160-165	165-175	170-175	175-180	180-185
	circumference	100-110	110-120	120-135	135-150	150-165	165-180



Hoodie collection



Multiple colors



more style 

size	XS	S	M	L	XL
Shoulder width	60	63	66	69	72
Clothing length	58.5	61	63.5	66	68.5
Chest circumference	150-155	155-165	165-170	170-180	180-185
Sleeve length	80-90	90-110	110-130	130-150	150-170

Multiple colors



more style 

size chart

size	XS	S	M	L	XL
Shoulder width	60	63	66	69	72
Clothing length	58.5	61	63.5	66	68.5
Chest circumference	150-155	155-165	165-170	170-180	180-185
	80-90	90-110	110-130	130-150	150-170

Multiple colors



more style 

size chart

size	XS	S	M	L	XL	2XL	3XL
Shoulder width	57	62	66	69	72	74	76
Clothing length	37	40	42	45	47	50	52
Chest circumference	47	49	51	54	57	60	62
Sleeve length	150	160	160-165	165-170	170-175	170-180	170-190
	70-80	90-100	100-120	120-140	140-160	160-180	180-220



Conventional tooling





灰色配藏蓝



藏蓝配红色



宝蓝配藏蓝



藏蓝配果绿



Conventional workwear series: Commonly used fabric materials are all cotton, polyester cotton, and polyester. This type of fabric is wear-resistant and wrinkle resistant, and is often used in construction sites, workshops, municipal, environmental sanitation, auto repair and other industries with difficult working environments



Conventional workwear series: Commonly used fabric materials are all cotton, polyester cotton, and polyester. This type of fabric is wear-resistant and wrinkle resistant, and is often used in construction sites, workshops, municipal, environmental sanitation, auto repair and other industries with difficult working environments



For
Protection





Protective workwear series: It is made of fabrics with anti-static, flame-retardant, acid and alkali resistant, anti magnetic vibration, waterproof and other protective functions that provide protection for the human body. It is often used in high temperature, pollution, open flames and other working environments such as auto repair, electricity, fire protection, petroleum, welding, etc



Protective workwear series: It is made of fabrics with anti-static, flame-retardant, acid and alkali resistant, anti magnetic vibration, waterproof and other protective functions that provide protection for the human body. It is often used in high temperature, pollution, open flames and other working environments such as auto repair, electricity, fire protection, petroleum, welding, etc



After being treated with flame retardant technology, it does not burn or melt when exposed to open flames, and is fire-resistant. It has good flame retardancy, environmental protection, washing resistance, comfort, breathability, easy washing and wear resistance. The full process fabric is also comfortable.



Sports/school uniforms





Sports/yoga/school uniform series: This series of clothing often uses knitted fabrics such as air layers, health fabrics, and hoodie fabrics, which contain a certain amount of spandex to ensure that people have a relatively large range of movement during sports and fitness.

Multiple colors



Sports suit



Sports suit



School uniform series

Sports/yoga/school uniform series: This series of clothing often uses knitted fabrics such as air layers, health fabrics, and hoodie fabrics, which contain a certain amount of spandex to ensure that people have a relatively large range of movement during sports and fitness.



Stormwear collection >

**杜邦三防
无惧油污**
暴雨级防水
≥10000MMH.O

冲锋衣六边形标准认证

防水
防风
透湿
耐磨

灵活
轻量

防水指数 ★★★★★
防风指数 ★★★★★
透湿指数 ★★★★★



接缝全压胶
暴雨级防水
≥10000MMH.O



内胆保暖层
舒适透气

三种穿法
防风抗寒

外壳功能层
防风抗寒



The submachine suit series is one of the essential equipment for outdoor sports enthusiasts, with certain waterproof and windproof properties.

Fabric and craftsmanship:

1. Two layer laminated adhesive fabric: Only a waterproof and breathable layer is composite under the outer fabric. When making clothing, an inner lining needs to be added to protect the waterproof and breathable film layer.
2. Three layer laminated adhesive fabric: a waterproof and breathable layer is composite under the outer fabric, and then a layer of inner lining is composite, so there is no need to add a lining when making clothes.
3. Two and a half layers of fabric: a waterproof and breathable layer is composite under the outer fabric, and then a protective layer (not a lining fabric) is added. When making clothing, there is no need to add a lining because there is already a protective layer, but it is much lighter, thinner, and softer than the three layer laminated fabric.

Multiple colors



Multiple colors





Baseball cap series

Customizing with pictures



Breathable and sweat wicking fabric



Breathable mesh design



Upgrade sweatband design



Velcro/metal buckle optional



more style



Customizing with pictures



more style 

Customizing with pictures



精湛车缝制作帽檐



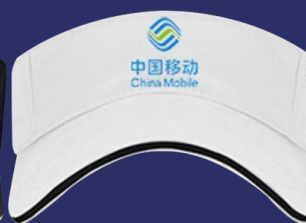
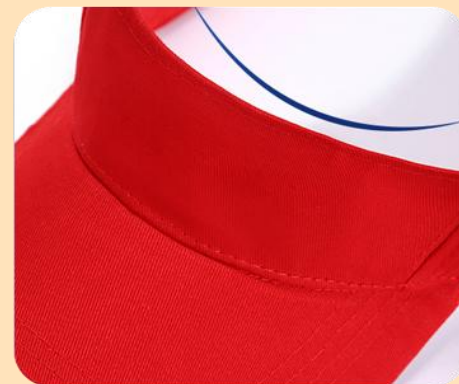
调节扣自由调节大小



3D立体帽裁剪



帖服更吸汗汗带



more style





Canvas bag series

Customizing with pictures

Specifications:

Width 40cm * Height 35cm * Bottom width 8cm
With lining seal and zipper



High density Oxford cloth

Authoritarian Canvas:

A starting print pattern/text

Heat sublimation printing/no glue feeling/no fading after washing

16A (excluding cotton)



Customized drawstring pocket display





Other
series



Multiple colors



孔雀藍 复合面料
(复合水蜜桃面料)



桔色 复合面料
(复合水蜜桃面料)



红色 复合面料
(复合水蜜桃面料)



蓝色 复合面料
(复合水蜜桃面料)



荧光绿 复合面料
(复合水蜜桃面料)



黄色 复合面料
(复合水蜜桃面料)

Fluorescent Yellow Series



Orange series

Tank style





Hem | ine



STRAIGHT BOTTOM

**Thank you
for watching**