



专业从事RF射频变压器，耦合器，功分器，电感器的研发，生产与销售为一体的高新技术企业！  
Professional R&D, production and sales RF transformer, coupler, power divider, inductor!

# 珠海市东恒电子有限公司

## ZHUHAI EASTEVER ELECTRONIC CO., LTD.

好巴伦  找东恒



因为专注 所以专业  
Because Concentration, So professional

射频被动元件方案商  
RF passive component solution provider



# 公司简介 Company Profile

珠海市东恒电子有限公司成立于2010年9月，10年以来我们一直致力于射频变压器RF Balun Transformers、功分器 Power Splitters、耦合器 Couplers，电感Inductors，线圈coils 等被动器件研发，生产和销售。经过公司团队多年来的努力拼搏与发展，公司目前已经拥有多项发明专利和实用新型专利证书，并于2022年荣获“高新企业”荣誉证书，ISO9001:2015质量体系证书和ISO14001:2015环境体系证书！

为了提高生产效率，不断进行生产技术改革，公司将所有机械设备全部更新换代，引进国外全自动生产设备（全自动数控绕线机、全自动点焊机，智能全自动编带包装机等）。为适应全球环保的要求，我们更是责无旁贷，原材料及生产的所有产品全部都定期或不定期经权威机构测试，确保符合环保要求及有关标准。

为了保证每批次产品的质量，使客户放心的、无后顾之忧的使用我们的优质产品，我们近乎苛刻的择选每一个认真负责的、同样有品质保证的原材料供应商，大部份原材料均采用日本、台湾等行业品牌公司的。射频测试设备，全部采用安捷伦，是德，41所等行业顶尖矢量网络分析仪。因为我们明白只有优质的原材料和先进的测试设备，才能生产具有品质保证的优质产品。

目前我们已经与跟美国Arris，美国CASA，马来西亚Intel，Foxconn，数码视讯，康特、青岛海信、东方广视，太平洋莱特，芯通，九州等众多国际知名企业建立了长期稳定的合作关系，我们的产品广泛应用于5G小基站，放大器模块，野外干线放大器，数字电视机顶盒，车载流媒体后视镜，无线麦克风，数字对讲机等终端产品。

Zhuhai EastEver Electronic co.ltd was founded in September 2010. For 10 years, we have been committed to the R&D, production and sale of passive components such as RF Balun Transformers, Power Splitters, Couplers, Inductors, and coils. After years of hard work and development of the company team, the company currently Has a number of independent invention patents and utility model patent certificates, and successively won the "High-tech Enterprise" honorary certificate, ISO9001:2015 quality system certificate and ISO14001:2015 environmental system in 2022!

In order to improve production efficiency and continuously carry out production technology reforms, the company renews all machinery and equipment, and introduces foreign automatic production equipment (automatic numerical control winding machine, automatic point Welding machine, intelligent automatic taping and packaging machine, etc.). In order to meet the requirements of global environmental protection, we are duty-bound. All raw materials and all products produced are regularly or irregularly tested by authoritative organizations to ensure compliance with environmental protection requirements and related standards.

In order to ensure the quality of each batch of products, so that our client could use our high-quality products with reassurance and without worries behind, we almost rigorously select every serious and responsible raw material supplier that also has quality assurance. Most of the raw materials are used Brand companies in Japan, Taiwan and other industries. The RF test equipment all adopts Agilent, Keysight, 41 industry top vector network analyzers. Because we understand that only high-quality raw materials and advanced testing equipment can produce high-quality products with quality assurance.

At present, we have established long-term and stable cooperative relations with many well-known international companies such as Arris in the United States, CASA in the United States, Intel in Malaysia, Foxconn, Sumavision, Kcatv, Qingdao Hisense, Oriental Broadcasting(OVT), Pacific Broadband Networks, Chengdu NTS, Jiuzhou, etc. Our products are extensive used in 5G small base stations, amplifier modules, field trunk amplifiers, set-top boxes, car streaming media rearview mirrors, wireless microphones, digital walkie-talkies, VHF, UHF, Broadband gateways. Telecom applications and other terminal products area.



## 经营理念 Entrepreneur Philosophy

态度 Attitude 细节 Details 专注 Concentration 专业 Professional



Balun Transformer | Coupler | Divider | Inductor | Choke | Bead Air Coil | LAN Transformer

# Balun & Coupler & Splitter Schematic

Fig A

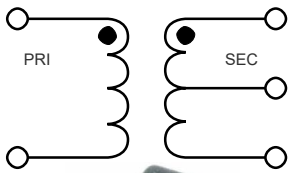


Fig B

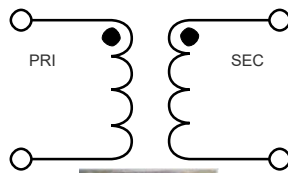


Fig D

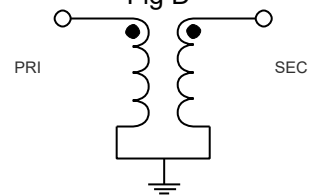


Fig G

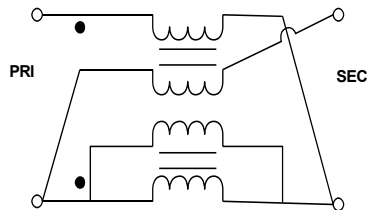


Fig E

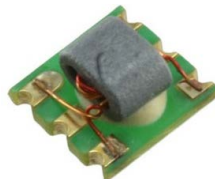
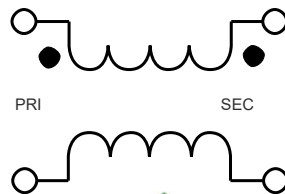


Fig F

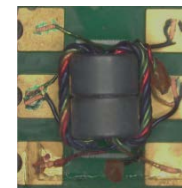
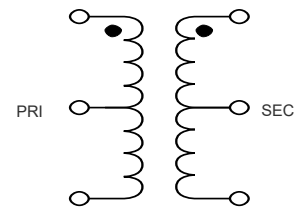


Fig Q

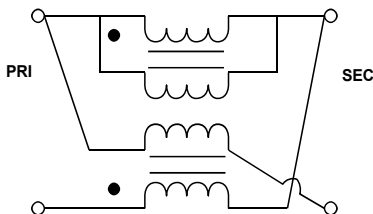


Fig H

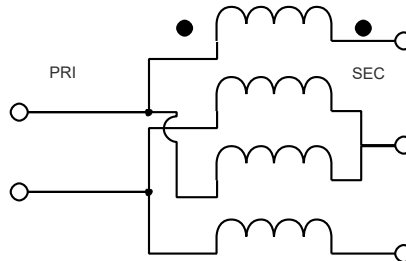


Fig I

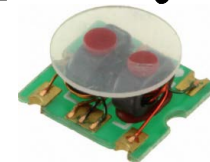
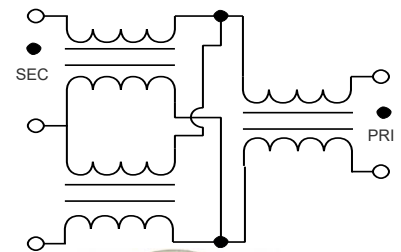


Fig J

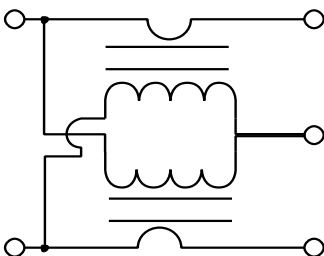


Fig K

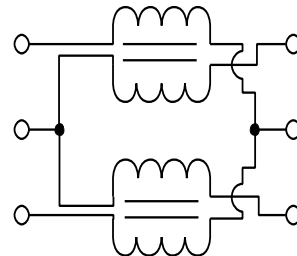
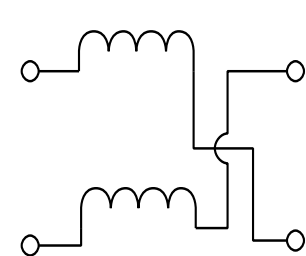
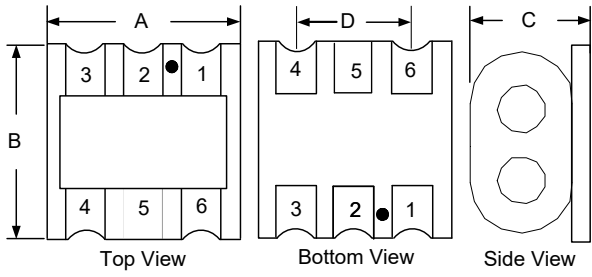


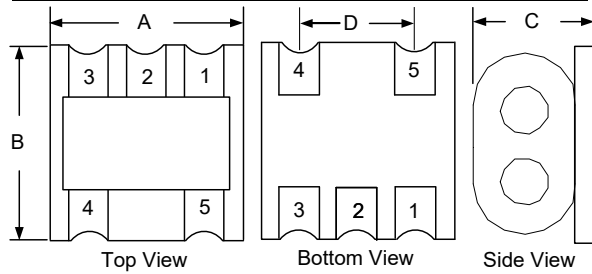
Fig L



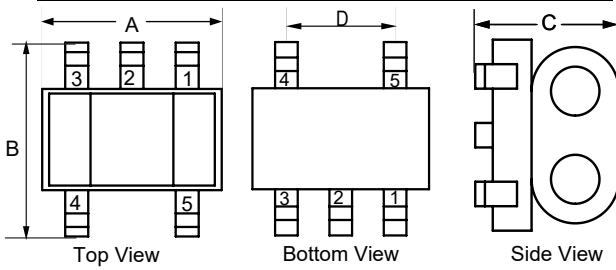
# Balun&Coupler&Splitter Base Style /Outline Dimensions



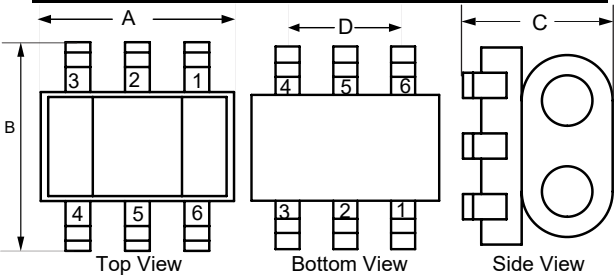
Base Style	A±0.2	B±0.2	C Max	D Typ
B001	7.11	6.40	4.00	5.08
B015	4.50	4.40	3.50	2.54
B023	7.11	6.40	4.00	5.08
B024	9.00	7.20	5.20	5.08



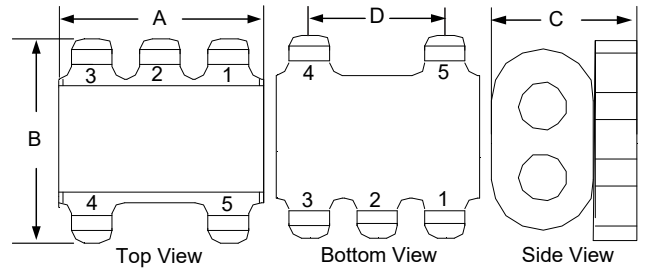
Base Style	A±0.2	B±0.2	C Max	D Typ
B018	4.20	4.20	3.50	2.54



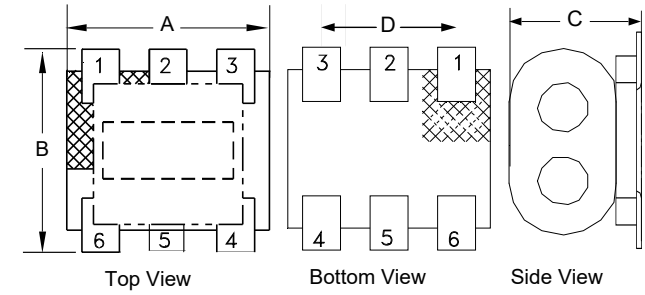
Base Style	A±0.2	B±0.2	C Max	D Typ
B004	3.80	4.20	3.50	2.54
B006	3.80	4.80	3.50	2.54
B009	4.30	5.10	3.50	3.00
B010	6.00	6.10	3.50	4.00



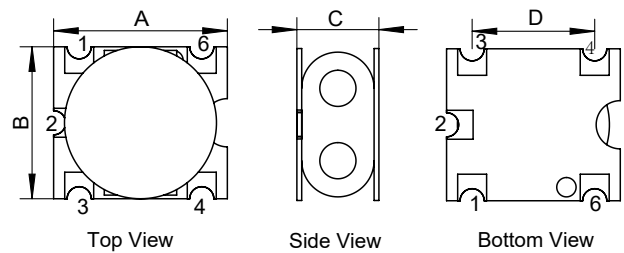
Base Style	A±0.2	B±0.2	C Max	D Typ
B003	3.80	4.20	3.50	2.54
B005	7.60	6.80	5.50	5.08
B007	3.80	4.80	3.50	2.54
B008	4.30	5.10	3.50	3.00
B011	6.00	6.10	3.50	4.00



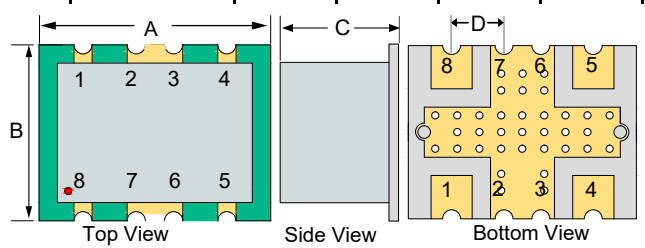
Base Style	A±0.2	B±0.2	C Max	D Typ
B013	3.80	3.80	3.50	2.54



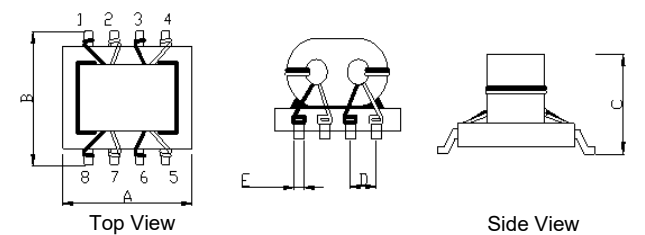
Base Style	A±0.2	B±0.2	C Max	D Typ
B012	3.80	4.20	3.50	2.54



Base Style	A±0.2	B±0.2	C Max	D Typ
B002	7.10	6.40	3.50	5.08



Base Style	A±0.2	B±0.2	C Max	D Typ
B028	12.70	9.40	7.00	2.92



Base Style	A±0.2	B±0.2	C Max	D Typ
B019	5.70	6.20	4.50	1.27

# RF Balun Transformer Characteristic Data Sheet

Eastever Part Number	$\Omega$	SEC	PRI/SEC ( $\Omega$ Ratio)	Frequency (MHz)	Package	MPQ	Replace Part Number	Replace Brand
EBA1-1T+C013032	50	A	1:1CT	0.4-500	B004	2000	TC1-1T+	Minicircuits
YB2F-458PT-11TL-C081	50	A	1:1CT	0.3-750	B012	2000	WBC1-1TL	Coilcraft
EBA3593-G013081	50	A	1:1CT	0.5-550	B013	2000	RFXF3593	MiniRF
EBA-1-15-H004081	50	A	1:1CT	0.5-550	B004	2000	TC1.5-52T+	Minicircuits
EBA1-1T-C032032	50	A	1:1CT	0.05-450	B013	2000	CX2041NL	Pulse
YB7F-617DB-1-6T-B378	50	A	1:1CT	0.3-125	B001	1500	ADT1-6T	Minicircuits
YB2F-458PT-0060-G081	50	A	1:1CT	0.3-200	B013	2000	MABAES0060	Macom
EBB0505-G035082	50	A	1:1CT	0.15-400	B035	1000	ADT1-1+	Minicircuits
EBA3593-G013081	50	A	1:1.5CT	5-550	B013	2000	RFXF3593	MiniRF
EBA-1-15-H004081	50	A	1:1.5CT	0.4:550	B013	2000	TC1.5-52T+	Minicircuits
YB2F-458PT-21TL-G081	50	A	1:2CT	0.3-500	B012	2000	WBC2-1TL	Coilcraft
EBA2-1T-G0010810	50	A	1:2CT	8-600	B001	1500	ADT2-1T-1P+	Minicircuits
EBA0507-G018187	50	A	1:2CT	10-700	B018	2000	TC2-72T+	Minicircuits
EBA2-1T-G012082	50	A	1:2CT	3-300	B012	2000	TCM2-1T	Minicircuits
YB2F-458PT-21TL-G081	50	A	1:2CT	3-300	B012	2000	TC2-1T+	Minicircuits
EBA2-1T-G012082	50	A	1:2CT	2-350	B012	2000	RFXF2533	MiniRF
EBA1038-H004109	50	A	1:3CT	5-300	B004	2000	MABA-011038	Macom
YB2F-458PT-0061-G084	50	A	1:4CT	2-800	B013	2000	MABAES0061	Macom
YB2F-458PT-4-14+G067	50	A	1:4CT	200-1400	B012	2000	TC4-14+	Minicircuits
YB2F-458PT-0067-G007	50	A	1:4CT	1-350	B004	2000	MABACT0067	Macom
YB4F-617PT-1019-G081	50	A	1:4CT	8-750	B009	2000	#B4F-617PT-1019	Toko
YB3F-458PT-4-14+G067	50	A	1:4CT	200-1400	B015	2000	TC4-14+	Minicircuits
EBA4-1W-G012081	50	A	1:4CT	5-500	B012	2000	TC4-1W-7ALN+	Minicircuits
EBA4-1W-G012081	50	A	1:4CT	2-800	B012	2000	ETC4-1-2TR	Macom
EBA4-1T-A018644	50	A	1:4CT	0.5-300	B018	2000	TC4-1T+	Minicircuits
EBA0143-G013081	50	A	1:8CT	2-500	B013	2000	MABA-010143-FLUX18	Macom
EBA0143-G013081	50	A	1:8CT	2-500	B013	2000	TC8-1-10LN+	Minicircuits
EBA9-1T-G035082	50	A	1:9CT	1-250	B035	1500	ADT9-1T+	Minicircuits
EBA1-16-B018644	50	A	1:16CT	0.6-160	B018	2000	TC16-161T+	Minicircuits
YB2F-458PT-2-11-B081	50	A	2:1CT	2-1100	B013	2000	TC2-112G2+	Minicircuits
EBA9852-G018087	75	A	1:1CT	5-300	B018	2000	MABA-009852-CF1A40	Macom
YB2F-458PT-3713-H105	75	A	1:1CT	1-300	B004	2000	RFXF03713	MiniRF
B013-458PT-3713-H315	75	A	1:1CT	5-200	B013	2000	RFXF2713	MiniRF
EBA1-1T+C013032	75	A	1:1CT	0.3-200	B013	2000	MABACT0036	Macom
EBA0633-G006081	75	A	1:1CT	3-200	B006	2000	XFM-0201-1WH	MiniRF
EBA1-1T+C013032	75	A	1:1CT	5-200	B013	2000	RFXF0013	MiniRF
YB4F-458PT-9594-H096	75	A	1:1CT	5-200	B009	2000	MABA-009594-CF18A0	Macom
B009-458PT-1026-G276	75	A	1:1CT	5-200	B009	2000	MABA-007532-CF18A0	Macom
YB5F-458PT-1566-H272	75	A	1:1CT	5-100	B010	1000	#B5F-458PT-1566	Toko

# RF Balun Transformer Characteristic Data Sheet

Eastever Part Number	$\Omega$	SEC	PRI/SEC ( $\Omega$ Ratio)	Frequency (MHz)	Package	MPQ	Replace Part Number	Replace Brand
EBA1.33-1-H010321	75	A	1:1.33CT	3-500	B010	1000	TC1.33-1T-75+	Minicircuits
EBA9092-G018186	75	A	1:1.33CT	5-1000	B018	2000	MABA-009092-CT1A40	Macom
YB2F-458PT-1062-H078	75	A	1:2CT	1-300	B004	2000	MAB-011062	Macom
YB2F-458PT-3743-H105	75	A	1:4CT	1-350	B004	2000	RFXF03743	MiniRF
YB2F-458PT-0181-G081	75	A	1:9CT	5-90	B013	2000	MABA-010181-CF9A40	Macom
YB4F-458PT-0068F	75	A	2:1CT	5-200	B009	2000	MABA-011056	Macom
YB5F-458PT-1002-H314	75	A	4:1CT	5-200	B010	1000	MABA-011048	Macom
YB5F-458PT-2002-G006	75	A	2:1CT	5-100	B010	1000	#B5F-458PT-2002	Toko
YB7F-458PT-1002-G314	75	A	4:1CT	5-200	B005	1000	MABA-011002	Macom
EBA9573-G018081	75	A	1.77:1	5-100	B018	2000	MABA-009573-CF1A40	Macom
EBA1064-G004087	75	A	4:1CT	5-300	B004	2000	MABA-011064	Macom
EBA5743-G018081	75	A	1:3CT	5-1200	B018	2000	RFXF5743	MiniRF
EBA1-1T-C001032	75	A	1:4CT	0.4-800	B001	1500	ADT1-1WT	Minicircuits
EBA0048-C018081	75	A	2:1CT	5-200	B018	2000	MABACT0048	Macom
YB2F-458PT-M1-1+G022	50	B	1:1	1.5-500	B012	2000	TCM1-1+	Minicircuits
EBB0604-G018081	75	B	2:1	5-100	B018	2000	MABA-009776-CF28A0	Macom
YB2F-458PT-1.5-1-H082	50	D	1.5:1	0.5-2200	B012	2000	TC1.5-1G2+	Minicircuits
YB3F-458PT-0063-F026	50	D	1.5:1	5-1000	B006	2000	MABACT0063	Macom
EBD1104-G013081	75	D	1.5:1	5 - 1218	B013	2000	MABA-011104	Macom
EBD0205-G018087	75	D	1:2	5 - 1000	B018	2000	MABA-010449-CA2A40	Macom
EBE1-43-E013647	50	E	1:1	650-4000	B013	2000	TC1-1-43+	Minicircuits
YB2F-617DB-1-13M+F082	50	E	1:1	4.5-3000	B012	2000	TC1-1-13M+	Minicircuits
EBE9503-E018087	50	E	1:1	5-3000	B018	2000	RFXF9503	MiniRF
EBE0245-F013186	50	E	1:1	5-3000	B013	2000	MABA-007159-000000	Macom
B001-617DB-1-12-B253	50	E	1:1	20-1200	B001	2000	ADTL1-12+	Minicircuits
EBE0245-F013186	75	E	1:1	46-1002	B004	2000	MABA-010245-CT1160	Macom
YB2F-617DB-5793-I082	75	E	1:1	5-1250	B004	2000	RFXF5793	MiniRF
YB4F-617DB-7731-F189	75	E	1:1	50-2150	B009	2000	MABA-007731-CT1980	Macom
YB4F-617DB-0059-F204	75	E	1:1	1-2500	B009	2000	XFP-2501-1UH	MiniRF
EBE8757-E013186	75	E	1:1	5-3000	B013	2000	MABA-008757-CT1160	Macom
EBE0059-E013613	75	E	1:1	5-3000	B013		MABACT0059	Macom
EBE1094-A013187	75	E	1:1	5-1250	B004	2000	MABA-011094	Macom
EBE1031-F091186	75	E	1:1	5-1200	B091	2000	MABA-011031	Macom
EBF0303-G001081	50	F	1:1	0.3-300	B001	1500	ADTT1-1+	Minicircuits
YB4F-458PT-4-4T-H020	50	F	1:4CT	0.3-800	B008	2000	WBC4-4L	Coilcraft
YB7F-617DB-4-1T-B380	50	F	1:4CT	0.3-125	B001	1500	ADTT4-1	Minicircuits
YB5F-458PT-4535-H096	75	F	1.3CT:1CT	1-250	B011	1000	BX4535NL	Pulse
EBG1-43-B012331	50	G	1:1	10-4000	B012	2000	TCM1-43X+	Minicircuits
EBG1-63-C012331	50	G	1:1	10-6000	B012	2000	TCM1-63AX+	Minicircuits
EBG1-83-B012389	50	G	1:1	10-8000	B012	2000	TCM1-83X+	Minicircuits
EBG1.5-1-B001268	50	G	1:1.5	10-1800	B001	1500	TRS1.5-182+	Minicircuits

# RF Balun Transformer Characteristic Data Sheet

Eastever Part Number	Ω	SEC	PRI/SEC (Ω Ratio)	Frequency (MHz)	Package	MPQ	Replace Part Number	Replace Brand
EBE2672-F012737	50	G	1:2	1700-6700	B012	2000	TCM2-672X+	Minicircuits
EBG2-63-B018331	50	G	1:2	30-6000	B012	2000	TCM2-63WX+	Minicircuits
EBH4-45-D012389	50	G	1:4	20-4500	B012	2000	TCM4-452X+	Minicircuits
B009-617DB-2500-D243	75	G	1:1	5-1250	B009	2000	MABACT0069	Macom
EBG1160-D012023	75	G	1:1	5-1200	B012	2000	MABA-007748-CT1160	Macom
EBG9210-D001384	75	G	1:1	50-1250	B001	1500	MABA-009210-CT1760	Macom
EBG1085-D001087	75	G	1:1	5-1250	B001	1500	MABA-011085	Macom
B004-617DB-2500-D243	75	G	1:1	50-1200	B004	2000	MABA-010321-CT1A42	Macom
EBQ0060-B018023	75	G	1:1	5-1250	B018	2000	MABACT0060	Macom
EBG1112-A004779	75	G	1:1	5-1250	B004	2000	MABA-011136	Macom
EBG1112-A004779	75	G	1:1	5-1800	B004	2000	MABA-011112	Macom
EBG1-33-B013187	75	G	1:1	5-1250	B013	2000	RFXF5703	MiniRF
EBG1-33-B018412	75	G	1:1	5-3000	B018	2000	TC1-33-75G2A+	Minicircuits
EBG1182-B004845	75	G	1:1	5-1800	B004	2000	TRS1-182-75-3+	Minicircuits
EBG1182-B102845	75	G	1:1	5-1800	B102	1500	TRS1-182-75+	Minicircuits
EBG1-33-B018412	75	G	1:1	5-3000	B018	2000	TC1-33-75-7+	Minicircuits
EBG0282-B018084	75	G	1:1.33	5-1250	B018	2000	MABA-011051	Macom
YB2F-617DB-0282-B084	75	G	1:1.33	4-2800	B004	2000	TC1.33-282+	Minicircuits
EBG0282-B018331	75	G	1:1.33	5-2800	B018	2000	TC1.33-282+	Minicircuits
YB7F-617DB-1029-D321	75	G	1:2	5-1200	B003	1500	MRFXF5732-1	MiniRF
EBG2142-C013331	75	G	1:2	10-1400	B013	2000	TCM2-142-75X+	Minicircuits
YB2F-617DB-5553+B026	50	H	1:4CT	5-1250	B013	2000	RFXF5553	MiniRF
YB2F-617DB-4-19+B084	50	H	1:4CT	10-1900	B013	2000	TC4-19+	Minicircuits
YB4F-617DB-0129-B026	50	H	1:4CT	5-1250	B009	2000	MABA-010129-CT4A40	Macom
EBH1642-A013522	50	H	1:4	500-3000	B013	2000	MABA-007236-C16423	Macom
YB4F-617DB-0129-B026	50	H	1:4CT	5-1000	B013	2000	MABAES0054	Macom
EBH3-52-C012331	50	H	1:3	20 - 4500	B012	2000	TCM3-452X+	Minicircuits
EBH8553-D013613	50	H	1:4	500-2500	B013	2000	RFXF8553	MiniRF
EBH8553-D013613	50	H	1:4	500-2500	B013	2000	TC4-25+	Minicircuits
B012-617DB-2-43-B331	50	H	1:2	10-4000	B012	2000	TCM2-43X+	Minicircuits
YB2F-617DB-4-19+B084	50	H	1:4	10-1900	B013	2000	TC4-19+	Minicircuits
EBH1642-A013522	50	H	1:4	500-3000	B013	2000	ETC1.6-4-2-3	Macom
EBH7659-D004186	50	H	1:4CT	2-1000	B004	2000	MABA-007569-ETK42T	Macom
EBI1-1T-D018187	50	I	1:1CT	5-1500	B018	2000	TC1-1T-152X+	Minicircuits
EBI4513-D013087	50	I	1:1	5-1000	B018	2000	RFXF4513	MiniRF
EBI0040-D018081	75	I	1:1	5-1000	B018	2000	MABACT0040	Macom
EBI1-33-D018335	75	I	1:1.33	5-1800	B018	2000	TC1.33-182X-75+	Minicircuits
YB7F-617DB-1029-D321	75	I	1:2CT	5-1250	B003	1500	MABA-011029	Macom
YB7F-617DB-2010-D315	75	I	1:2CT	5-1250	B003	1500	MABA-007681-CT2010	Macom
EBI3010-C002315	75	I	1:3	5 - 1250	B002	1500	MABA-010441-CT38A0	Macom
EBW2-32-D012571	50	W	1:2	30-3000	B012	2000	TCM2-33X+	Minicircuits
EBX0247-B018081	50	X	1:2	1-1600	B018	2000	MABA-010247-2R1250	Macom



Balun Transformer | Coupler | Divider | Inductor | Choke | Bead Air Coil | LAN Transformer

# Directional Coupler Characteristic Data Sheet

Eastever Part Number	$\Omega$	Frequency (MHz)	Coupling(dB)	Package	SEC	MPQ	Replace Part Number	Replace Brand
ECJ0601-C024187	50	5-200	6.0	B024	J	1000	ADC-6-1-R+	Minicircuits
ECJ0901-B004331	50	5-2000	9.0	B004	J	2000	TCD-9-1W+	Minicircuits
ECJ1001-C062331	50	5-1000	10.0	B062	J	2000	DBTC-10-13LX+	Minicircuits
ECJ2001-C093848	50	1.5-60	20.0	B093	J	250	SYDC-20-61HP+	Minicircuits
ECJ2001-C090852	50	1.5-60	20.0	B090	J	250	SYDC-20-61VHP+	Minicircuits
ECJ2001-C093318	50	10-540	20.0	B014	J	500	SYDC-20-62HP+	Minicircuits
ECJ2001-B092020	50	40-1000	20.0	B092	J	250	SYDC-20-13HP+	Minicircuits
ECJ2301-C001603	50	5-1250	23.0	B011	J	1000	MACP-011045	Macom
ECJ2601-C092853	50	30-540	26.0	B092	J	250	SYBDC-26-52VHP+	Minicircuits
B005-617PT-0601-D081	75	5-1250	6.0	B001	J	1000	MACP-009730-C60370	Macom
YB2F-617PT-0701-A081	75	5-1500	6.8	B004	J	2000	MRFCP0013	MiniRF
ECJ0701-C001081	75	5-1250	7.0	B001	J	1500	MACP-011091	Macom
ECJ0801-C018109	75	40-1250	8.0	B018	J	2000	MACP-011015	Macom
ECJ0801-C001005	75	5-1250	8.0	B001	J	1500	MACP-010446-C80370	Macom
ECJ0801-D009016	75	5-1250	8.0	B009	J	2000	MACP-010250-C808A0	Macom
YB2F-617PT-0901-D081	75	5-1250	9.0	B004	J	2000	MRFCP0014	MiniRF
ECJ5743-C018081	75	5-1250	10.0	B018	J	2000	RFCP5743	MiniRF
ECJ1001-D018081	75	5-1200	10.0	B018	J	2000	TCD-10-4-75+	Minicircuits
ECJ1001-B005334	75	5-1250	10.0	B005	J	1000	ADC-10-4-75+	Minicircuits
ECJ1001-D001255	75	5-870	10.0	B001	J	1500	MACP-010252-CA0370	Macom
ECJ1201-D001296	75	5-1250	12.0	B001	J	1500	MACP-011059	Macom
YB2F-617PT-1201-D016	75	5-1250	12.0	B004	J	2000	DBTC-12-4-75+	Minicircuits
ECJ1301-D018331	75	5-1200	13.0	B018	J	2000	TCD-13-4-75+	Minicircuits
ECJ1401-C065082	75	5-3250	14.0	B065	J	1500	MACP-011074	Macom
ECJ1401-C065082	75	5-3250	14.0	B065	J	2000	MACP-011031	Macom
ECJ1405-C001082	75	5-1800	14.5	B001	J	1000	MACP-011081	Macom
YB4F-617PT-1501-C303	75	5-1000	15.0	B009	J	2000	MACP-010382-CF0A40	Macom
YB2F-617PT-1601-D081	75	5-1500	16.0	B004	J	2000	TCD-16-122-75X+	Minicircuits
ECJ1601-C005299	75	5-1800	16.0	B005	J	1000	MRFCP6762	MiniRF
ECJ1601-C001264	75	5-1250	16.0	B001	J	1500	MACPCT0030	Macom
YB7F-617PT-1601-C005	75	5-1250	16.0	B001	J	1000	MACP-011008	Macom
YB2F-617PT-1601-C331	75	5-2250	16.5	B012	J	2000	TCD-16-23-75X+	Minicircuits
YB2F-617PT-1701-C016	75	5-1500	17.0	B004	J	2000	MACP-007741-CG09E0	Macom
ECJ1701-B005135	75	5-1000	17.0	B005	J	1000	MACP-009943-CH07F0	Macom
ECJ1701-C004081	75	5-300	17.0	B004	J	2000	MACP-010507	Macom
ECJ1701-C001435	75	5-1250	17.0	B001	J	1500	MACP-011014	Macom
ECJ1701-C001437	75	5-1250	17.0	B001	J	1500	MACP-009945-CH0670	Macom
YB7F-617PT-1701-C437	75	5-1250	17.3	B001	J	1500	MACP-011014	Macom
YB2F-617PT-1801-C030	75	5-1500	18.0	B004	J	2000	MACP-010249-CI08A0	Macom
ECJ1801-C001030	75	5-1250	18.0	B001	J	1500	MACP-007727	Macom
YB7F-617PT-1901-C135	75	5-1250	19.0	B001	J	1000	MACP-011013	Macom
ECJ2001-C033854	75	5-2350	20.0	B033	J	1500	RDC-20-232-75X+	Minicircuits

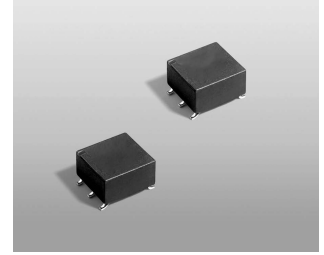
# Power Splitter Characteristic Data Sheet

Eastever Part Number	$\Omega$	Frequency (MHz)	Package	SEC	MPQ	Replace Part Number	Replace Brand
EDK2-10-C012331	50	5-1000	B012	K	2000	TCP-2-10+	Minicircuits
YB2F-617DB-S40C-G331	50	5-2700	B012	K	2000	TCP-2-272+	Minicircuits
YB2F-617DB-S40C-G331	50	50-4000	B008	L	2000	TCP-2-33W+	Minicircuits
B015-617DS-1007-C331	75	5-2150	B008	K	2000	MAPD-011007	Macom
YB4F-617DS-6723-B026	75	5-1250	B008	K	2000	RFSP06723	MiniRF
YB7F-617DS-3229-B160	75	5-1250	B001	K	1500	MAPD-011035	Macom
YB7F-617DS-3229-B311	75	5-1250	B001	K	1500	MAPD-011039	Macom
YB7F-617DS-0029-C084	75	5-1000	B001	K	1500	MAPDCT0029	Macom
YB7F-617DS-0024-C084	75	5-1250	B001	K	1500	MAPDCT0024	Macom
YB2F-617DS-0110-C022	75	5-1600	B001	K	1500	MAPD-011002	Macom
EDK8108-C055440	75	5-1250	B055	K	1500	MAPD-008108-C202C0	Macom
B015-617DS-1007-C331	75	5-1000	B008	K	2000	MAPD-009918-C209C0	Macom
EDD1058-G018081	75	5-3250	B018	D	2000	MAPD-011058	Macom
EDD0026-F062441	75	5-2400	B062	D	2000	MAPDCT0026	Macom
EDK0033-C055441	75	5-1000	B055	K	1000	MAPDCT0033	Macom
YB2F-617DS-0110-C022	75	5-1250	B015	K	2000	MAPD-011053	Macom
EDK2-13-B081370	75	5-1000	B081	K	1500	CDP-2-13-75+	Minicircuits
EDC8109-G115482	75	5-200	B055	K	500	MAPD-008109-C30040	Macom
EDC1027-G122480	75	5-1500	B055	K	500	MAPD-011027	Macom
EDK4-10-B095331	50	5-1000	B095	K	500	SCA-4-10+	Minicircuits

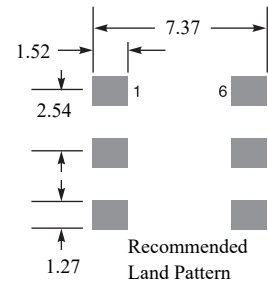
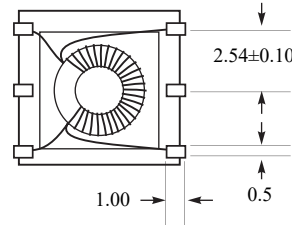
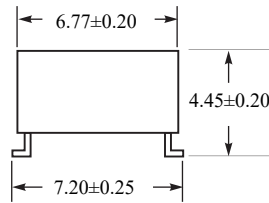
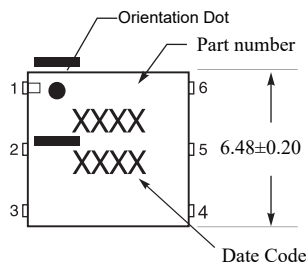
# RF Balun Transformer Characteristic Data Sheet

## RF Transformers Features

- Cost effective surface mount wideband transformers
- 300 V interwinding isolation, 1/4 Watt RF input power
- 250 mA max current rating.
- Operating temperature range: -40°C to +85°C
- Storage temperature range: -40°C to +80°C



## RF Transformers Dimensions & Configurations-(Unit mm)



## Specification

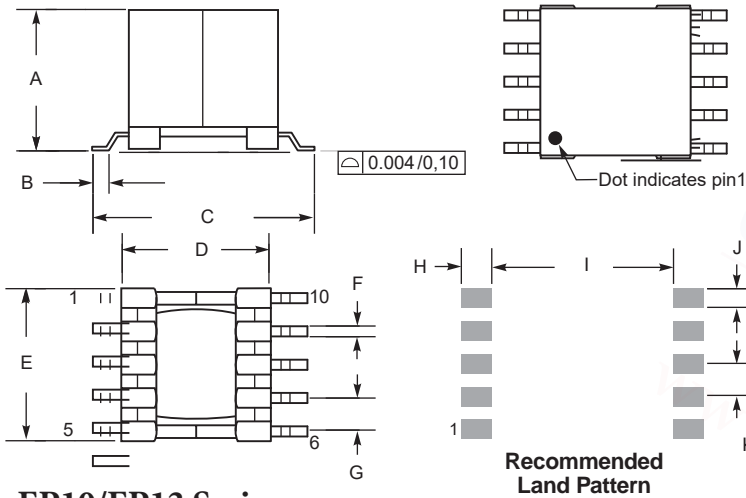
Type	Part Number	Impedance ratio pri:sec	Bandwidth (MHz)	Idc (mA)	Insertion loss max (dB)	L min (μH)	DCR max (Ohms)	L min (μH)	DCR max (Ohms)	Coilcraft P/N
 Type B	EBB-1-AL	1:1	0.08 - 450	250	0.60	40	0.070	40	0.070	PWB-1-AL
	EBB-1.5-AL	1:1.5	0.03 - 300	250	0.35	110	0.080	160	0.110	PWB-1.5-AL
	EBB-2-AL	1:2	0.05 - 200	250	0.25	75	0.088	150	0.120	PWB-2-AL
	EBB-4-AL	1:4	0.15 - 500	250	0.50	25	0.075	98	0.135	PWB-4-AL
	EBB-16-AL	1:16	0.05 - 80	250	0.35	75	0.260	1250	0.910	PWB-16-AL
	EBB1010L	1:1	0.0035 - 125	250	0.20	780	0.320	780	0.320	PWB1010L
	EBB1010-1L	1:1	0.03 - 250	250	0.20	95	0.200	95	0.200	PWB1010-1L
	EBB1015L	1:1.5	0.07 - 225	250	0.40	51	0.130	80	0.145	PWB1015L
	EBB1040L	1:4	0.15 - 400	250	0.40	25	0.115	95	0.160	PWB1040L
 Type A	EBA-1-BL	1:1	0.13 - 425	250	0.40	22	0.070	22	0.070	PWB-1-BL
	EBA-1.5-BL	1:1.5	0.50 - 250	250	0.40	140	0.100	200	0.120	PWB-1.5-BL
	EBA-2-BL	1:2	0.20 - 400	250	0.35	75	0.088	150	0.130	PWB-2-BL
	EBA-4-BL	1:4	0.14 - 700	250	0.50	25	0.075	98	0.135	PWB-4-BL
	EBA-16-BL	1:16	0.075 - 90	250	0.30	75	0.260	1250	0.910	PWB-16-BL
	EBA2010L	1:1	0.0035 - 125	250	0.20	780	0.320	780	0.320	PWB2010L
	EBA2010-1L	1:1	0.03 - 250	250	0.20	95	0.200	95	0.200	PWB2010-1L
	EBA2040L	1:4	0.15 - 400	250	0.40	25	0.115	95	0.160	PWB2040L
 Type F	EBF-1-CL	1:1	0.10 - 300	250	0.60	22	0.070	22	0.070	PWB-1-CL
	EBF-1.5-CL	1:1.5	0.15 - 200	250	0.30	140	0.110	200	0.120	PWB-1.5-CL
	EBF-2-CL	1:2	0.13 - 285	250	0.30	75	0.105	150	0.130	PWB-2-CL
	EBF-4-CL	1:4	0.14 - 500	250	0.50	25	0.075	98	0.135	PWB-4-CL
	EBF3010L	1:1	0.0035 - 1	250	0.20	780	0.320	780	0.320	PWB3010L
	EBF3010-1L	1:1	0.03 - 250	250	0.20	95	0.200	95	0.200	PWB3010-1L
	EBF3015L	1:1.5	0.07 - 225	250	0.40	51	0.130	80	0.145	PWB3015L
	EBF3040L	1:4	0.15 - 400	250	0.40	25	0.115	95	0.160	PWB3040L

# Flyback Transformers

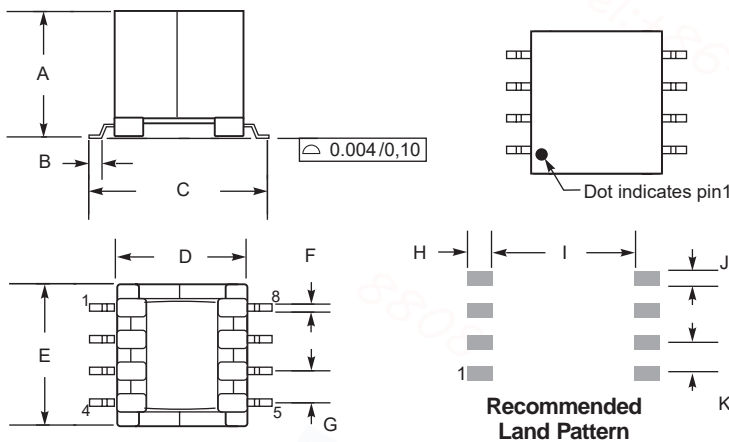


## SHAPE AND DIMENSIONS(UNIT:mm):

### EP13A



### EP10/EP13 Series



## Features

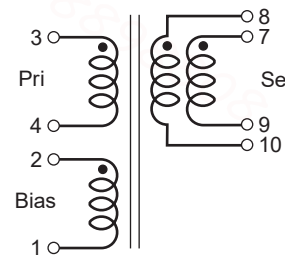
- Flyback transformers for EP applications
- Designed to operate in continuous mode at 250 kHz with an input of 36-72 Vdc



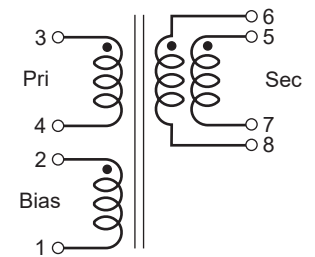
- 1500 Vrms isolation from primary and bias to secondary
- Ambient temperature  $-40^{\circ}\text{C}$  to  $+85^{\circ}\text{C}$
- Storage temperature Component:  $-40^{\circ}\text{C}$  to  $+85^{\circ}\text{C}$ .
- Inductance is for the primary, measured at 250 kHz, 0.1 Vrms, 0 Adc.
- Pk is peak primary current drawn at minimum input voltage.
- DCR for the secondary is per winding.
- Leakage inductance measured between pins 3 and 4 with all other pins shorted.
- Turns ratio is with the secondary windings connected in parallel.
- Output of the secondary is with the windings connected in parallel.
- Bias winding output is 12 V, 20 mA.
- Electrical specifications at  $25^{\circ}\text{C}$ .

## Schematics

### EP13A



### EP10,EP13



Secondary windings to be connected in parallel on PC board.

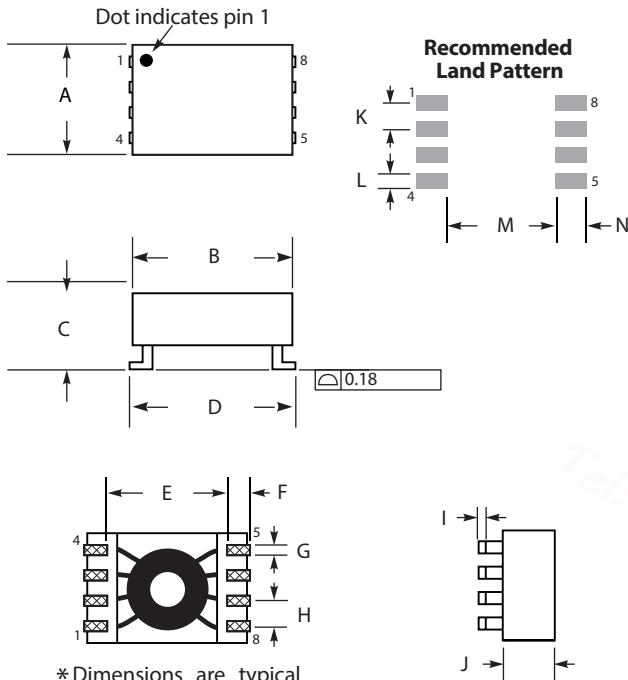
Eastever P/N	A (max)	B	C (max)	D	E (max)	F	G	H	I	J	K
EP10	9.02	1.05	13.21	8.60	10.92	0.70	2.50	2.03	9.40	1.27	2.50
EP13	11.00	1.05	15.24	10.50	12.7	0.60	2.50	2.03	11.68	1.27	2.50
EP13A	12.7	1.00	17.75	13.00	13.46	0.70	2.50	2.03	14.99	1.27	2.50

## Electrical Characteristics @ $25^{\circ}\text{C}$ :

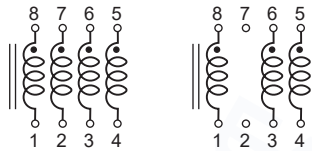
Eastever P/N	Power (W)	Inductance at 0 A $\pm 10\%$ ( $\mu\text{H}$ )	Inductance at $I_{pk}$ min ( $\mu\text{H}$ )	DCR max (Ohms)			Leakage inductance max ( $\mu\text{H}$ )	Turns ratio		$I_{pk}$ (A)	Output	Coilcraft P/N
				pri	bias	sec		pri : sec	pri : bias			
EP10-311-00	3	310	279.0	1.02	2.01	0.066	4.75	1 : 0.19	1 : 0.70	0.3	3.3 V, 0.91 A	POE30P-33L
EP10-311-01	3	310	279.0	1.02	2.01	0.118	4.50	1 : 0.28	1 : 0.70	0.3	5.0 V, 0.6 A	POE30P-50L
EP10-311-02	3	310	279.0	1.04		0.700	4.25	1 : 0.70	1 : 0.70	0.3	12 V, 0.25 A	POE30P-12L
EP13-1550-00	7	155	139.5	0.414	0.822		4.00	1 : 0.19	1 : 0.667	0.65	3.3 V, 2.12 A	POE70P-33L
EP13-1550-01	7	155	139.5	0.414	0.822		3.60	1 : 0.262	1 : 0.667	0.65	5.0 V, 1.4 A	POE70P-50L
EP13-1550-02	7	155	139.5	0.414	0.822		3.25	1 : 0.667	1 : 0.667	0.65	12 V, 0.6 A	POE70P-12L
EP13A-1270-00	13	127	114.3	0.255	0.310		1.25	1 : 0.166	1 : 0.50	1.0	3.3 V, 4.0 A	POE13P-33L
EP13A-1270-01	13	127	114.3	0.222	0.348		0.950	1 : 0.25	1 : 0.50	1.0	5.0 V, 2.6 A	POE13P-50L
EP13A-1270-02	13	127	114.3	0.199	0.308		0.650	1 : 0.50	1 : 0.50	1.0	12 V, 1.08 A	POE13P-12L
EP13A-1270-03	13	127	114.3	0.290	0.355		0.800	1 : 0.567	1 : 0.50	1.0	19.5 V, 0.67 A	POE13P-19L
EP13A-1270-04	13	127	114.3	0.255	0.315		0.600	1 : 0.667	1 : 0.50	1.0	24 V, 0.54 A	POE13P-24L

# SMT Data Line EMI Filters

## Shape and Dimensions(Unit:mm):



CMF8060-4000/4500 CMF8060-3000/3500 CMF8060-2000/2500



A	B	C	D	E
5.70±0.20	8.00±0.20	4.10±0.20	8.30±0.20	6.00Typ
F	G	H	I	J
1.00	0.50	1.27	0.305	2.50
K	L	M	N	
1.27	0.76	5.08	1.52	

## Recommended Patterns:



- Available in 4, 3 and 2-line versions
- Exceptional common mode noise attenuation from 15 MHz to 300 MHz; passes signal line data below 300 MHz with minimal attenuation
- DC current capacity of 500 or 100 mA.
- Excellent electrical isolation (300 Vrms)

1. Frequency at which the differential mode attenuation equals -3 dB
2. Inductance shown for each winding, measured at 1 MHz
3. DCR is for each winding.
4. Interwinding isolation (hipot) tested for one minute.
5. Current rating is for each line.
6. Refer to Doc 362 "Soldering Surface Mount Components" before soldering.

Terminations RoHS compliant tin-silver-copper over tin over nickel over phos bronze.

Weight 183 – 201 mg

Ambient temperature -40°C to +85°C

Storage temperature Component: -40°C to +85°C.

Tape and reel packaging: -40°C to +80°C

Resistance to soldering heat Max three 40 second reflows at +260°C, parts cooled to room temperature between cycles

Moisture Sensitivity Level (MSL) 1 (unlimited floor life at <30°C / 85% relative humidity)

Mean Time Between Failures (MTBF) 26,315,789 hours

## Electrical Specifications @ 25°C:

Eastever P/N	Lines	Common mode peak impedance (kOhms)	Cutoff frequency (GHz)	Inductance min (uH)	DCR max (mOhms)	Isolation (Vrms)	Current (mA dc)	Coilcraft P/N
CMF8060-4000	4	0.949 @ 210 MHz	1.1	5.0	250	300	100	<a href="#">PDLF4000L</a>
CMF8060-4500	4	0.848 @ 200 MHz	0.88	5.0	200	300	500	<a href="#">PDLF4500L</a>
CMF8060-3000	3	0.901 @ 280 MHz	1.4	5.0	250	300	100	<a href="#">PDLF3000L</a>
CMF8060-3500	3	0.910 @ 210 MHz	1.1	5.0	200	300	500	<a href="#">PDLF3500L</a>
CMF8060-2000	2	0.958 @ 280 MHz	1.3	5.0	250	300	100	<a href="#">PDLF2000L</a>
CMF8060-2500	2	0.929 @ 250 MHz	1.2	5.0	200	300	500	<a href="#">PDLF2500L</a>

# LTCC Transformer-Filter-Coupler-Splitter

## Multi-layer LTCC Filter Series

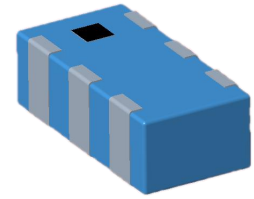
### Features

- High integration
- Small size
- High reliability

### Production information

### Application

- Smart phone
- Bluetooth headset
- WLAN
- 5G



Type	EASTEVER P/N	Passband Frequency (MHz)	Dimension	Minicircuits P/N	Type	EASTEVER P/N	Bandpass Frequency (MHz)	Dimension	Minicircuits P/N
Low-pass filter	ELP-300-E4-W7.8	DC-350	2012	LFCG-320+	Low-pass filter	ELP-3700-E4-W7.8	DC-3710	2012	LFCG-3800+
Low-pass filter	ELP-400-E4-W7.8	DC-420	2012	LFCG-400+	Low-pass filter	ELP-4000-E4-W7.8	DC-4010	2012	LFCG-3800+
Low-pass filter	ELP-600-E4-W7.8	DC-650	2012	LFCG-630+	Low-pass filter	ELP-100-D4-W7.8	DC-100	3216	LFCN-105
Low-pass filter	ELP-700-E4-W7.8	DC-710	2012	LFCG-900+	Low-pass filter	ELP-630-D4-W7.8	DC-680	3216	LFCN-630
Low-pass filter	ELP-800-E4-W7.8	DC-800	2012	LFCG-900+	Low-pass filter	ELP-630P-D4-W7.8	DC-680	3216	LFCN-630
Low-pass filter	ELP-900-E4-W7.8	DC-900	2012	LFCG-900+	Low-pass filter	ELP-700-D4-W7.8	DC-700	3216	LFCN-800
Low-pass filter	ELP-1000-E4-W7.8	DC-1050	2012	LFCG-1000+	Low-pass filter	ELP-700P-D4-W7.8	DC-750	3216	LFCN-800
Low-pass filter	ELP-1100-E4-W7.8	DC-1100	2012	LFCG-1000+	Low-pass filter	ELP-800-D4-W7.8	DC-800	3216	LFCN-800
Low-pass filter	ELP-1200-E4-W7.8	DC-1200	2012	LFCG-1200+	Low-pass filter	ELP-800P-D4-W7.8	DC-850	3216	LFCN-900
Low-pass filter	ELP-1300-E4-W7.8	DC-1300	2012	LFCG-1325+	Low-pass filter	ELP-900-D4-W7.8	DC-930	3216	LFCN-900+
Low-pass filter	ELP-1400-E4-W7.8	DC-1410	2012	LFCG-1400+	Low-pass filter	ELP-900P-D4-W7.8	DC-930	3216	LFCN-900+
Low-pass filter	ELP-1500-E4-W7.8	DC-1510	2012	LFCG-1525+	Low-pass filter	ELP-1000-D4-W7.8	DC-1000	3216	LFCN-1000
Low-pass filter	ELP-1600-E4-W7.8	DC-1610	2012	LFCG-1575+	Low-pass filter	ELP-1000P-D4-W7.8	DC-1000	3216	LFCN-1000
Low-pass filter	ELP-1700-E4-W7.8	DC-1710	2012	LFCG-1700+	Low-pass filter	ELP-1100-D4-W7.8	DC-1100	3216	LFCN-1000
Low-pass filter	ELP-1800-E4-W7.8	DC-1810	2012	LFCG-1800+	Low-pass filter	ELP-1200-D4-W7.8	DC-1200	3216	LFCN-1200
Low-pass filter	ELP-1900-E4-W7.8	DC-1910	2012	LFCG-2000+	Low-pass filter	ELP-1300-D4-W7.8	DC-1300	3216	LFCN-1325
Low-pass filter	ELP-2000-E4-W7.8	DC-2000	2012	LFCG-2000+	Low-pass filter	ELP-1400-D4-W7.8	DC-1350	3216	LFCN-1325
Low-pass filter	ELP-2100-E4-W7.8	DC-2100	2012	LFCG-2000+	Low-pass filter	ELP-1600-D4-W7.8	DC-1600	3216	LFCN-1575
Low-pass filter	ELP-2200-E4-W7.8	DC-2210	2012	LFCG-2250+	Low-pass filter	ELP-1700-D4-W7.8	DC-1750	3216	LFCN-1700+
Low-pass filter	ELP-2300-E4-W7.8	DC-2300	2012	LFCG-2250+	Low-pass filter	ELP-1800-D4-W7.8	DC-1900	3216	LFCN-2000
Low-pass filter	ELP-2400-E4-W7.8	DC-2410	2012	LFCG-2500+	Low-pass filter	ELP-2000-D4-W7.8	DC-2100	3216	LFCN-2000
Low-pass filter	ELP-2500-E4-W7.8	DC-2510	2012	LFCG-2500+	Low-pass filter	ELP-2200-D4-W7.8	DC-2200	3216	LFCN-2250D+
Low-pass filter	ELP-2600-E4-W7.8	DC-2610	2012	LFCG-2600+	Low-pass filter	ELP-2400-D4-W7.8	DC-2400	3216	LFCN-2400D+
Low-pass filter	ELP-2800-E4-W7.8	DC-2810	2012	LFCG-2850+	Low-pass filter	ELP-2500-D4-W7.8	DC-2500	3216	LFCN-2500D+
Low-pass filter	ELP-2900-E4-W7.8	DC-2910	2012	LFCG-2850+	Low-pass filter	ELP-2600-D4-W7.8	DC-2650	3216	LFCN-2600D+
Low-pass filter	ELP-3100-E4-W7.8	DC-3110	2012	LFCG-3000+	Low-pass filter	ELP-2800-D4-W7.8	DC-2830	3216	LFCN-2850D+
Low-pass filter	ELP-3200-E4-W7.8	DC-3210	2012	LFCG-3400+	Low-pass filter	ELP-3000-D4-W7.8	DC-3100	3216	LFCN-3000D+
Low-pass filter	ELP-3300-E4-W7.8	DC-3310	2012	LFCG-3400+	Low-pass filter	ELP-3400-D4-W7.8	DC-3460	3216	LFCN-3400D+
Low-pass filter	ELP-3400-E4-W7.8	DC-3410	2012	LFCG-3400+	Low-pass filter	ELP-3600-D4-W7.8	DC-3600	3216	LFCN-3400D+
Low-pass filter	ELP-3500-E4-W7.8	DC-3670	2012	LFCG-3500+	Low-pass filter	ELP-4000-D4-W7.8	DC-4000	3216	LFTC-4000+
High-pass filter	EHP-1000-D4-W7.8	1080	3216	HFCN-1000+	Power splitter	EPD-2-11-D6-W7.8	800-1150	3216	SCN-2-10
High-pass filter	EHP-1100-D4-W7.8	1300	3216	HFCN-1100+	Power splitter	EPD-2-15-D6-W7.8	1100-1450	3216	SCN-2-15
High-pass filter	EHP-1300-D4-W7.8	1400	3216	HFCN-1300+	Power splitter	EPD-2-19-D6-W7.8	1450-1900	3216	SCN-2-19
High-pass filter	EHP-1500-D4-W7.8	1600	3216	HFCN-1500+	Power splitter	EPD-2-35-D6-W7.8	2800-3700	3216	SCN-2-35
High-pass filter	EHP-1600-D4-W7.8	1600	3216	HFCN-1600+	Power splitter	EPD-2-45-D6-W7.8	3700-4200	3216	SCN-2-45

# LTCC Transformer-Filter-Coupler-Splitter

## Multi-layer LTCC Filter Series

Type	EASTEVER P/N	Passband Frequency (MHz)	Dimension	Minicircuits P/N	Type	EASTEVER P/N	Passband Frequency (MHz)	Dimension	Minicircuits P/N
High-pass filter	EHP-1760-D4-W7.8	1900	3216	HFCN-1760+	Power splitter	EPD-2-11-E6-D	800-1150	2012	SCN-2-11
High-pass filter	EHP-1810-D4-W7.8	1900	3216	HFCN-1810+	Power splitter	EPD-2-15-E6-D	1100-1450	2012	SCG-2-242+
High-pass filter	EHP-1910-D4-W7.8	2000	3216	HFCN-1910+	Power splitter	EPD-2-19-E6-D	1450-1900	2012	SCG-2-242+
High-pass filter	EHP-2000-D4-W7.8	2100	3216	HFCN-2000+	Power splitter	EPD-2-22-E6-D	1800-2200	2012	SCG-2-242+
High-pass filter	EHP-2100-D4-W7.8	2200	3216	HFCN-2100+	Power splitter	EPD-2-27-E6-D	2200-2700	2012	SCG-2-322+
High-pass filter	EHP-2275-D4-W7.8	2400	3216	HFCN-2275+	Power splitter	EPD-2-35-E6-D	2800-3700	2012	SCN-2-35+
High-pass filter	EHP-2700-D6-W7.8	2900	3216	HFCN-2700AD+	Power splitter	EPD-2-45-E6-D	3700-4200	2012	SCN-2-45
High-pass filter	EHP-3100-D6-W7.8	3400	3216	HFCN-3100D+	Power splitter	EPD-2-65-E6-D	5500-6500	2012	SCN-2-65
High-pass filter	EHP-3500-D6-W7.8	3900	3216	HFCN-3500D+	Balun	EBL-17-D6-W7.8	1200-1800	3216	TCN4-22+
High-pass filter	EHP-3800-D6-W7.8	4250	3216	HFCN-3800D+	Balun	EBL-20-D6-W7.8	1300-2000	3216	TCN1-23+
High-pass filter	EHP-4400-D6-W7.8	5000	3216	HFCN-4400D+	Balun	EBL-27-D6-W7.8	1700-2700	3216	TCN2-26+
High-pass filter	EHP-4600-D6-W7.8	5000	3216	HFCN-4600D+	Balun	EBL-34-D6-W7.8	2400-3400	3216	/
High-pass filter	EHP-5050-D6-W7.8	5500	3216	HFCN-5050D+	Balun	EBL-40-D6-W7.8	3300-4000	3216	TCN2-45+
High-pass filter	EHP-5500-D6-W7.8	6000	3216	HFCN-5500D+	Balun	EBL-16-E6-D	1800-2800	2012	TCN2-26+
Bridge	EHC-1400-D6-W7.8	1200-1600	3216	/	Balun	EBL-19-E6-D	2000-3100	2012	NCS3-272+
Bridge	EHC-1512-D6-W7.8	1100-1925	3216	/	Balun	EBL-25-E6-D	2500-3800	2012	/
Diplexer	EDP-2450-5400-F6-W7.8	2450±50&5400±500	1608	DP1608A2455BG	Balun	EBL-31-E6-D	3100-4900	2012	NCS2-33+
Diplexer	EDP-2450-6150-F6-W7.8	2450±50&6150±1000	1608	RFDIP1607ELM9T21	Balun	EBL-33-E6-D	3300-5000	2012	NCS4-442+
Coupler	EDC-800-1000-F6-K7.8	800-1000	1608	/	Balun	EBL-40-E6-D	4400-5500	2012	/
Coupler	EDC-1710-2520-F6-K7.8	1710-2520	1608	/	Band-pass filter	EBP-4900-5950-F4-W7.8	4900-5950	1608	RFBPF1608060K98Q1C

## Partial 5G filter performance parameter

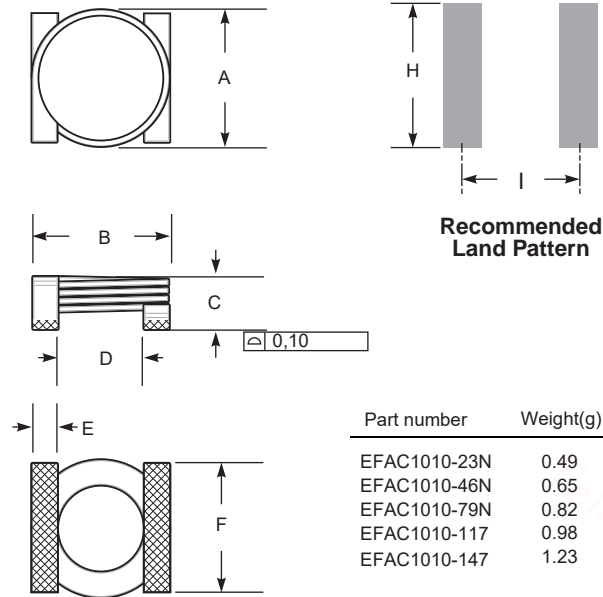
Frequency Parameter	3.6GHZ	4.9GHZ	28GHZ
Dimension	3.2mm×2.5mm×(≤3)mm	2.5mm×2.0mm×(≤3)mm	6.8mm×4.5mm×1.2mm
Center frequency	3.68GHz	4.91GHz	28GHz
Bandwidth	800MHz	800MHz	3GHz
Insertion Loss	3.5dB	3.5dB	7.0dB
Passband ripple	1.2dB	1.2dB	2.0dB
Return loss	-10dB	-10dB	-10dB
PSRR	>37dB@1.3GHz~2.68GHz >37dB@4.68GHz~6.0GHz >30dB@6.0GHz~10.0GHz	45dB@2.54GHz~3.34GHz >38dB@6.48GHz~7.28GHz >30dB@7.28GHz~10.0GHz	>35dB@20.0GHz~25.5GHz >35dB@31.0GHz~34.0GHz >20dB@30.5GHz~60.0GHz
Mounting	SMT	SMT	SMT
Dielectric constant	7.5	7.5	5.9
Dielectric loss	0.005	0.005	0.003
CTE	5.8ppm/°C	5.8ppm/°C	7ppm/°C
Thermal conductivity	3.3W/mk	3.3W/mk	2W/mk

# High Frequency, High Current Power Inductors

SHAPE AND DIMENSIONS(UNIT:mm):

RECOMMENDED PATTERNS:

## EFAC1010



Recommended Land Pattern

Part number	Weight(g)
EFAC1010-23N	0.49
EFAC1010-46N	0.65
EFAC1010-79N	0.82
EFAC1010-117	0.98
EFAC1010-147	1.23



- Excellent Q factors – up to 230 at 100 MHz!
- Current handling as high as 57 Amps
- Inductance values from 22 to 257 nH

**Environmental** RoHS compliant, halogen free

**Terminations** RoHS compliant tin-silver over copper

**Ambient temperature** -40°C to +125°C with I<sub>rms</sub> current

**Maximum part temperature** +155°C (ambient + temp rise).

**Storage temperature** Component: -40°C to +155°C.

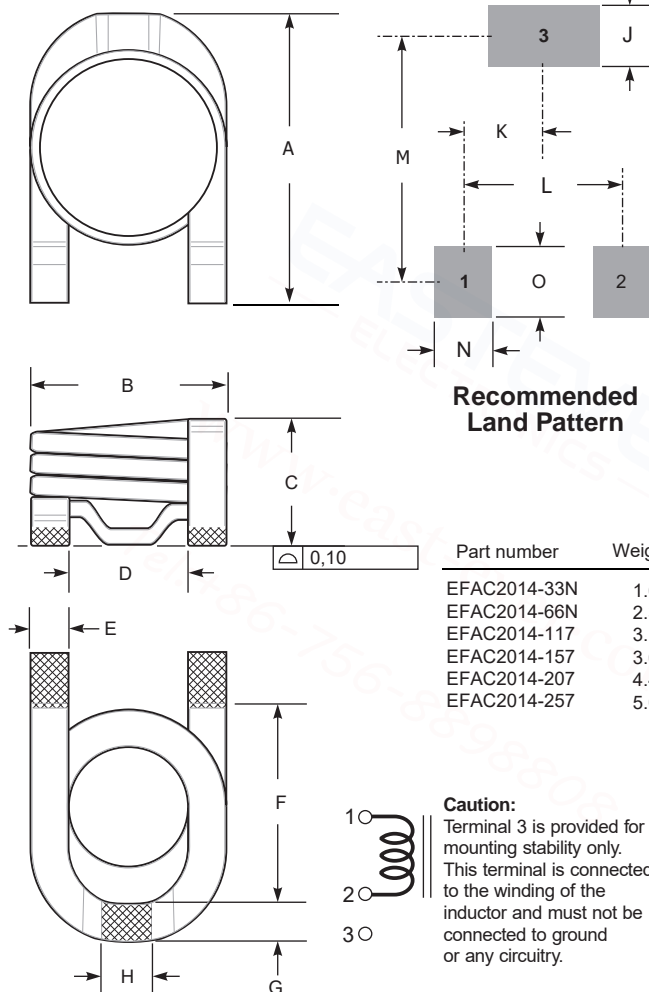
Tape and reel packaging: -40°C to +80°C

**Resistance to soldering heat** Max three 40 second reflows at +260°C, parts cooled to room temperature between cycles

**Temperature Coefficient of Inductance (TCL)** +5 to +70 ppm/°C

**Moisture Sensitivity Level (MSL)** 1 (unlimited floor life at <30°C / 85% relative humidity)

## EFAC2014

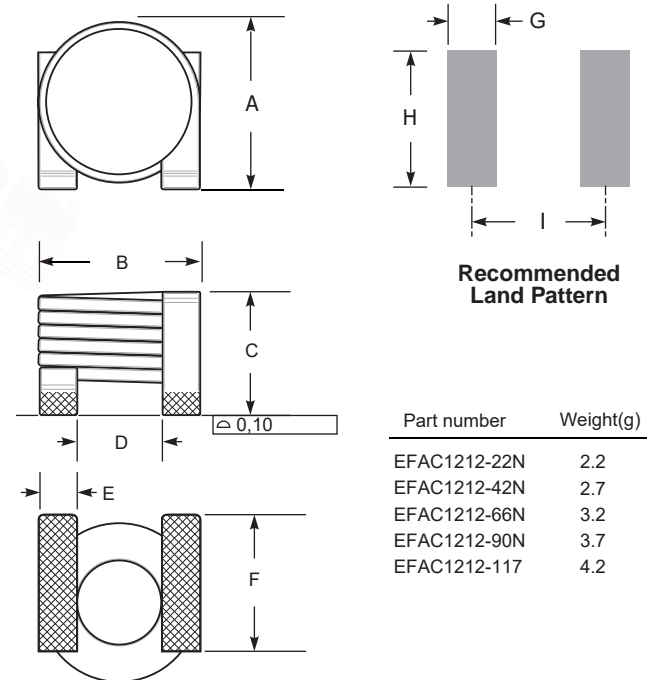


Recommended Land Pattern

Part number	Weight(g)
EFAC2014-33N	1.6
EFAC2014-66N	2.3
EFAC2014-117	3.1
EFAC2014-157	3.6
EFAC2014-207	4.4
EFAC2014-257	5.0

**Caution:**  
Terminal 3 is provided for mounting stability only. This terminal is connected to the winding of the inductor and must not be connected to ground or any circuitry.

## EFAC1212



Recommended Land Pattern

Part number	Weight(g)
EFAC1212-22N	2.2
EFAC1212-42N	2.7
EFAC1212-66N	3.2
EFAC1212-90N	3.7
EFAC1212-117	4.2

# High Frequency, High Current Power Inductors

DIMENSIONS(UNIT:mm):

Eastever P/N	A (max)	B (max)	C (max)	D (min)	E Typ	F	G	H	I	J	K	L	M	N	O
EFAC1010-230NM	10.0	10.0	3.60	5.36	1.75	8.55±0.25	2.54	9.53	7.91	-	-	-	-	-	-
EFAC1010-460NM	10.0	10.0	4.10	5.36	1.75	8.55±0.25	2.54	9.53	7.91	-	-	-	-	-	-
EFAC1010-790NM	10.0	10.0	4.80	5.36	1.75	8.55±0.25	2.54	9.53	7.91	-	-	-	-	-	-
EFAC1010-117NM	10.0	10.0	5.60	5.36	1.75	8.55±0.25	2.54	9.53	7.91	-	-	-	-	-	-
EFAC1010-147NM	10.0	10.0	6.10	5.36	1.75	8.55±0.25	2.54	9.53	7.91	-	-	-	-	-	-
EFAC1212-220NM	12.0	11.5	6.60	5.56	2.54	9.07±1.02	3.30	10.34	8.84	-	-	-	-	-	-
EFAC1212-420NM	12.0	11.5	7.60	5.56	2.54	9.07±1.02	3.30	10.34	8.84	-	-	-	-	-	-
EFAC1212-660NM	12.0	11.5	8.80	5.56	2.54	9.07±1.02	3.30	10.34	8.84	-	-	-	-	-	-
EFAC1212-900NM	12.0	11.5	10.4	5.56	2.54	9.07±1.02	3.30	10.34	8.84	-	-	-	-	-	-
EFAC1212-117NM	12.0	11.5	11.3	5.56	2.54	9.07±1.02	3.30	10.34	8.84	-	-	-	-	-	-
EFAC2014-330NM	19.56	13.6	5.99	7.52	2.54	16.08±1.02	2.54	3.30	7.37	4.06	5.21	10.41	16.33	3.81	4.70
EFAC2014-660NM	19.56	13.6	7.09	7.52	2.54	16.08±1.02	2.54	3.30	7.37	4.06	5.21	10.41	16.33	3.81	4.70
EFAC2014-117NM	19.56	13.6	8.31	7.52	2.54	16.08±1.02	2.54	3.30	7.37	4.06	5.21	10.41	16.33	3.81	4.70
EFAC2014-157NM	19.56	13.6	9.19	7.52	2.54	16.08±1.02	2.54	3.30	7.37	4.06	5.21	10.41	16.33	3.81	4.70
EFAC2014-207NM	19.56	13.6	10.4	7.52	2.54	16.08±1.02	2.54	3.30	7.37	4.06	5.21	10.41	16.33	3.81	4.70
EFAC2014-257NM	19.56	13.6	11.4	7.52	2.54	16.08±1.02	2.54	3.30	7.37	4.06	5.21	10.41	16.33	3.81	4.70

Electrical Characteristics @25 °C :

Eastever P/N	Inductance +20% (nH)	Q typ	Q test fred (MHz)	SRF typ (MHz)	DCR (mOhm)		Irms (A)		Coilcraft P/N
					typ	max	20 °C rlse	40 °C rlse	
EFAC1010-230NM	23.5	95	100	923	1.05	1.20	18.0	26.0	1010VS-23NME
EFAC1010-460NM	46.5	150	100	562	1.50	1.62	17.9	25.5	1010VS-46NME
EFAC1010-790NM	79.0	135	50	386	1.95	2.11	17.8	25.0	1010VS-79NME
EFAC1010-117NM	111	150	50	382	2.53	2.73	15.7	22.0	1010VS-111ME
EFAC1010-147NM	146	140	50	433	3.08	3.33	14.1	19.3	1010VS-141ME
EFAC1212-220NM	22.0	200	100	918	0.48	0.55	40.5	57.0	1212VS-22NME
EFAC1212-420NM	42.0	195	50	577	0.70	0.77	38.0	52.0	1212VS-42NME
EFAC1212-660NM	66.0	200	50	480	0.90	0.99	35.0	48.0	1212VS-66NME
EFAC1212-900NM	90.0	175	50	444	1.10	1.21	33.0	45.0	1212VS-90NME
EFAC1212-117NM	117	165	50	399	1.30	1.43	32.0	44.0	1212VS-111ME
EFAC2014-330NM	33.0	230	100	620	0.63	0.74	32.5	43.0	2014VS-33NME
EFAC2014-660NM	66.0	200	100	413	0.90	1.00	31.5	42.5	2014VS-66NME
EFAC2014-117NM	108	210	100	320	1.20	1.34	31.0	42.5	2014VS-111ME
EFAC2014-157NM	155	205	100	296	1.44	1.60	29.4	39.7	2014VS-151ME
EFAC2014-207NM	202	200	100	262	1.70	1.82	26.3	35.8	2014VS-201ME
EFAC2014-257NM	257	200	100	230	1.94	2.15	24.9	34.5	2014VS-251ME

1. Inductance measured at 1.0 MHz, 0.1 Vrms, 0 A using an Agilent/HP HP4291A impedance analyzer with an Agilent/HP 16193A test fixture or equivalents.

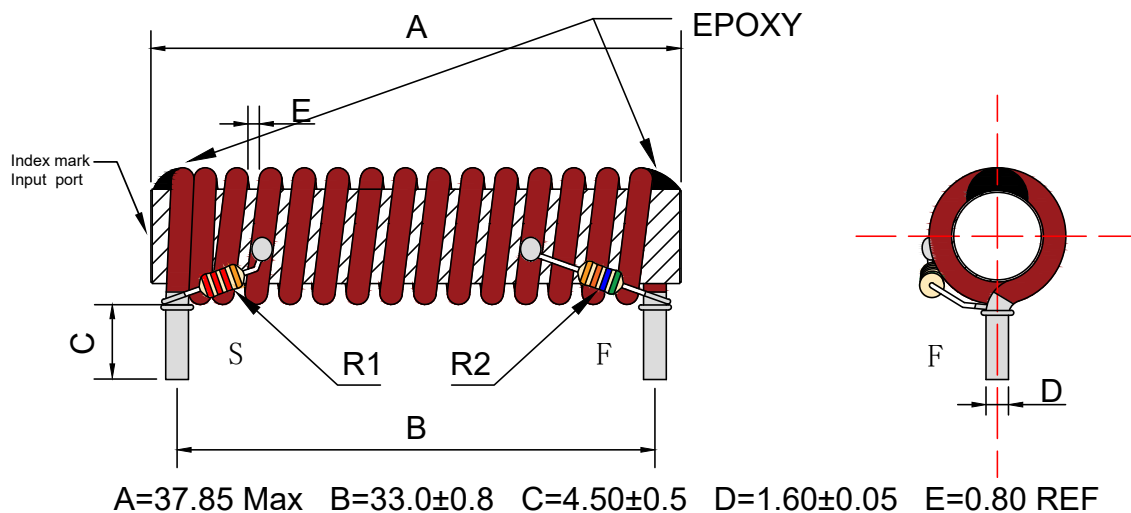
2.Q measured at the specified frequency using an Agilent/HP 4291A impedance analyzer or equivalent.

3.SRF measured using an Agilent/HP 8753 network analyzer , or equivalent and a Eastever STF0018 test fixture.

4.Current that causes the specified temperature rise from 25°C ambient. This information is for reference only and does not represent absolute maximum ratings.

# 1.8GHz Power Choke

## 1、 DIMENSION DIAGRAM (Unit:mm)



## 、 BILL OF MATERIALS :

R Core: R6.35X36 Ferrite Material

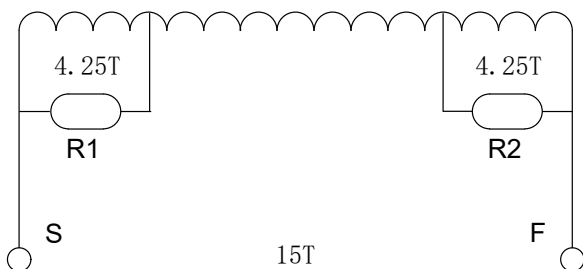
Resistor 1: 2200Ω±5% 1/8W

Copper Wire: QZY/180-1.60

Resistor 2: 560Ω±5% 1/8W

Epoxy: TH308

## 3、 ELECTRICAL STRUCTURE:



## 4、 ELECTRICAL CHARACTERISTICS:

Test Frequency : 10KHz/0.3V

Insertion Loss (Max): 0.80 dB @ 5-1600 MHz

Inductance : 3.20uH ±20%

Insertion Loss (Max): 1.00 dB @ 5-1800 MHz

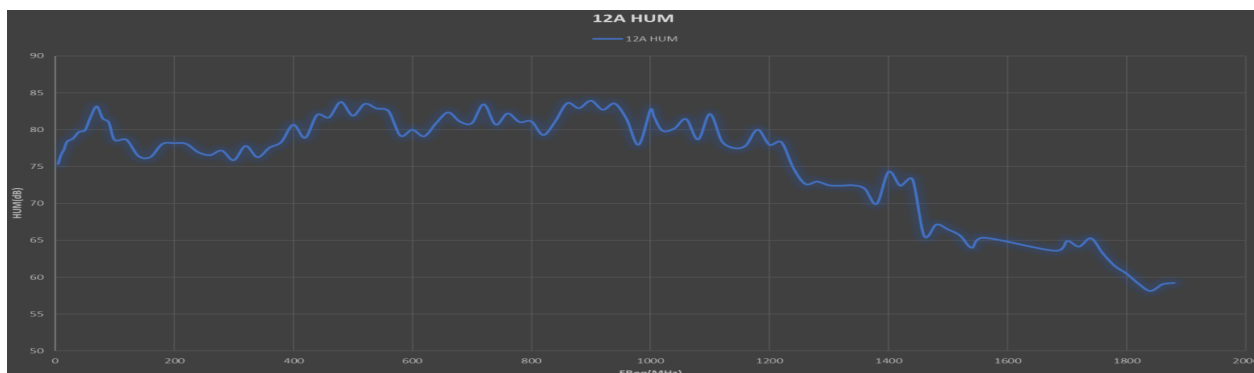
DC R : 4.2mΩ Max

Operating Temperature Range: -40 °C to +105 °C

Rated Current : 15.0A Max

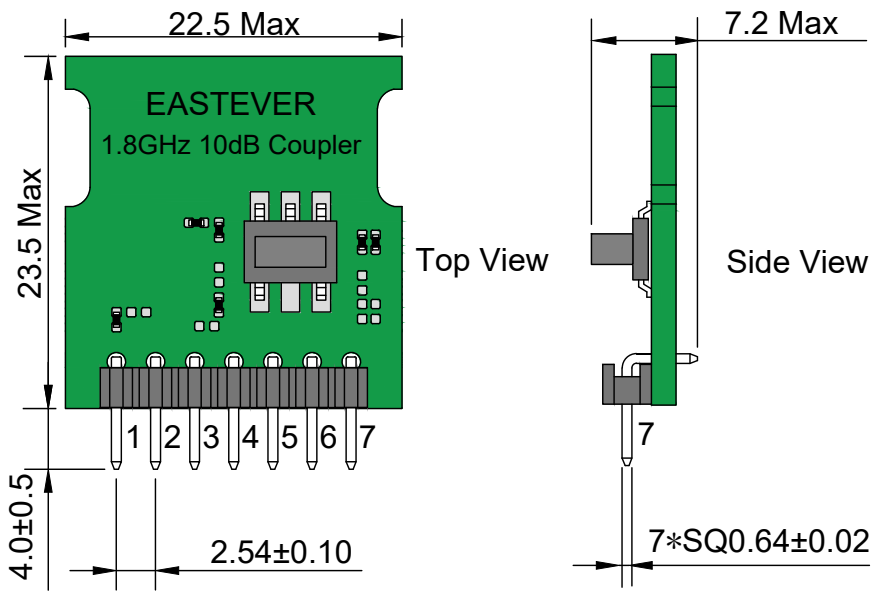
Storage Temperature Range: -55 °C to +125 °C

HUM modulation: 60dB Min@5-1800MHz



# 1.8GHz #, a ±, -ü | ·-?±α" 2, 3-μ

## 1、 DIMENSION DIAGRAM (Unit:mm)



### Pin Connections

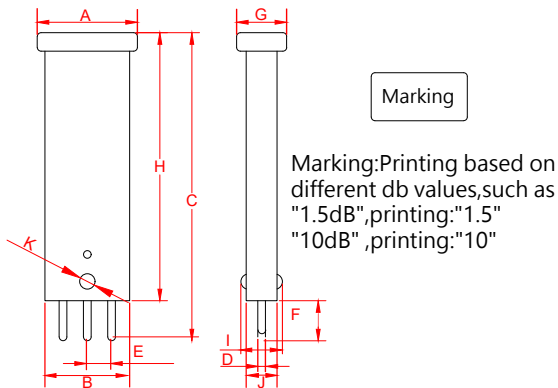
Input	4
Coupling	7
Output	1
Ground	2,3,5,6

## 2、 DC-8 Plugin/DC-10 Plug-in Electrical characteristics SPEC@25°C

Parameter	Units	Test Class	Port	Value	Notes	Value	Notes
Insertion Loss	dB	ref	Thru Path	-1.5	nom, 10 MHz	-1.1	nom, 10 MHz
				-1.5	nom, 102 MHz	-1.1	nom, 102 MHz
				-1.5	nom, 258 MHz	-1.1	nom, 258 MHz
				-1.5	nom, 492 MHz	-1.1	nom, 492 MHz
				-1.6	nom, 834 MHz	-1.2	nom, 834 MHz
				-1.8	nom, 1218 MHz	-1.4	nom, 1218 MHz
				-2.5	nom, 1794 MHz	-2.0	nom, 1794 MHz
			Coupled Path	-8.5	nom, 10 MHz	-10	nom, 10 MHz
				-8.5	nom, 102 MHz	-9.9	nom, 102 MHz
				-8.4	nom, 258 MHz	-9.8	nom, 258 MHz
				-8.2	nom, 492 MHz	-9.6	nom, 492 MHz
				-7.8	nom, 834 MHz	-9.1	nom, 834 MHz
				-7.5	nom, 1218 MHz	-8.8	nom, 1218 MHz
				-7.4	nom, 1794 MHz	-8.8	nom, 1794 MHz
Insertion Loss	dB	A	Thru Path	-3.0	Max, 1794 MHz	-2.5	Max, 1794 MHz
			Coupled Path	-8.5	Max, 1794 MHz	-10.0	Max, 1794 MHz
Flatness	dB	A	Thru Path	0.6	Pk to Pk, Max, 10-1794 MHz	0.6	Pk to Pk, Max, 10-1794 MHz
			Coupled Path	0.8	Pk to Pk, Max, 10-1794 MHz	0.8	Pk to Pk, Max, 10-1794 MHz
Slope	dB	A	Thru Path	-2.5	Max, 10-1794 MHz	-2.0	Max, 10-1794 MHz
			Coupled Path	0.5 [(+/-) 0.5]	Max, 10-1794 MHz	0.5 [(+/-) 0.5]	Max, 10-1794 MHz
Return Loss	dB	A	Thru Output	-16	Min, 10-1794 MHz	-16	Min, 10-1794 MHz
			Common Input	-16	Min, 10-1794 MHz	-16	Min, 10-1794 MHz
			Coupled Output	-16	Min, 10-1794 MHz	-16	Min, 10-1794 MHz
Isolation	dB	A	Thru – Coupled Path	-18	Min, 10-1794 MHz	-18	Min, 10-1794 MHz

# 1.8GHz Fixed Attenuator

## Outline Drawing(mm) Features



- RF Power:0.15W Max.
- Pin material:Brass H62.
- Plastic material:PC (ABS) alloy.
- Electrical Interface:3 pins, center ground.
- Body Material/Color:Yellow, Black, Blue, etc
- Operating temperature range:-40°Cto+120°C
- Storage temperature range: -45°C to +125°C
- dB value of attenuator printed on "T" handle,Black.
- The plug in Attenuators Bandwidth in 5 to 1218 MHz.
- The plug in Attenuators are used in Amplifier/Node Setup.
- The plug in Attenuators are available from 0 to 30dB in 0.5dB steps.



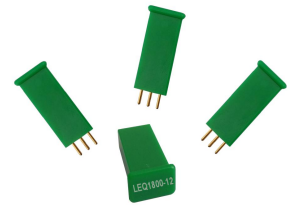
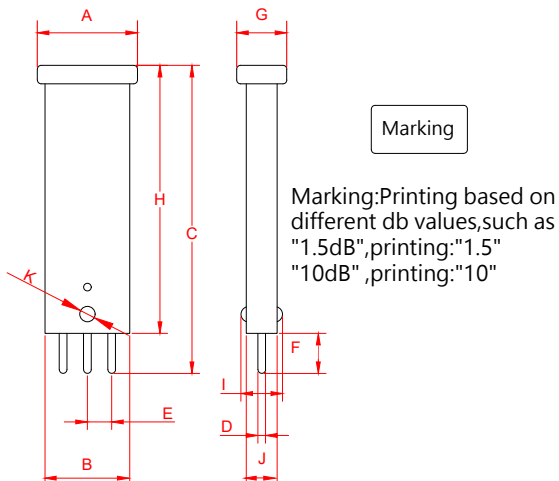
Part Number	A±0.30	B±0.30	C±0.50	D±0.05	E±0.10	F±0.50	G±0.30	H±0.50	I±0.30	J±0.30	K Ref
EFA-12 Series	13.00	11.00	17.00	1.00	3.175	5.00	6.50	12.00	Not	4.00	Not
EFA-26 Series	13.00	11.00	31.00	1.00	3.175	5.00	6.50	26.00	Not	4.00	Not
EFA-35 Series	13.00	11.00	40.00	1.00	3.175	5.00	6.50	35.00	5.50	4.00	1.80

### RF Parameters Per dB Range: TA =-40~120°C, ZO = 75 Ω,

Part Number	Attenuation dB value	Insertion Loss dB(Tol) 5-750MHz	Insertion Loss dB(Tol) 5-1200MHz	Insertion Loss dB(Tol) 5-1800MHz	Return Loss dB (Max) 5-750MHz	Return Loss dB (Max) 5-1200MHz	Return Loss dB(Max) 5-1800MHz
EFA-12-XX EFA-26-XX EFA-35-XX	0.0	±0.10	±0.20	±0.30	-26.0	-20.0	-18.0
	0.5	±0.10	±0.20	±0.30	-26.0	-20.0	-18.0
	1.0	±0.20	±0.30	±0.40	-25.0	-20.0	-18.0
	1.5	±0.20	±0.30	±0.40	25.0	-20.0	-18.0
	2.0	±0.20	±0.30	±0.40	-25.0	-20.0	-18.0
	2.5	±0.20	±0.30	±0.40	25.0	-20.0	-18.0
	3.0	±0.20	±0.30	±0.40	-25.0	-20.0	-18.0
	3.5	±0.20	±0.30	±0.40	-25.0	-20.0	-18.0
	4.0	±0.20	±0.30	±0.40	-25.0	-20.0	-18.0
	4.5	±0.20	±0.30	±0.40	-25.0	-20.0	-18.0
	5.0	±0.20	±0.30	±0.40	-25.0	-20.0	-18.0
	5.5	±0.20	±0.30	±0.40	-25.0	-20.0	-18.0
	6.0	±0.20	±0.30	±0.40	-25.0	-20.0	-18.0
	6.5	±0.20	±0.30	±0.40	-25.0	-20.0	-18.0
	7.0	±0.20	±0.30	±0.40	-25.0	-20.0	-18.0
	7.5	±0.20	±0.30	±0.40	-25.0	-20.0	-18.0
	8.0	±0.20	±0.30	±0.40	-25.0	-20.0	-18.0
	8.5	±0.20	±0.30	±0.40	-25.0	-20.0	-18.0
	9.0	±0.20	±0.30	±0.40	-25.0	-20.0	-18.0
	9.5	±0.20	±0.30	±0.40	-25.0	-20.0	-18.0
	10.0	±0.20	±0.30	±0.40	-25.0	-20.0	-18.0
	10.5	±0.20	±0.30	±0.40	-25.0	-20.0	-18.0
	11.0	±0.20	±0.30	±0.40	-25.0	-20.0	-18.0
	11.5	±0.20	±0.30	±0.40	-25.0	-20.0	-18.0
	12.0	±0.20	±0.30	±0.40	-25.0	-20.0	-18.0
	12.5	±0.20	±0.30	±0.40	-25.0	-20.0	-18.0
	13.0	±0.20	±0.30	±0.40	-25.0	-20.0	-18.0
	13.5	±0.20	±0.30	±0.40	-25.0	-20.0	-18.0
	14.0	±0.20	±0.30	±0.40	-25.0	-20.0	-18.0
	14.5	±0.20	±0.30	±0.40	-25.0	-20.0	-18.0
	15.0	±0.20	±0.30	±0.40	-25.0	-20.0	-18.0
	15.5	±0.20	±0.30	±0.40	-25.0	-20.0	-18.0
	16.0	±0.20	±0.30	±0.40	-25.0	-20.0	-18.0
	16.5	±0.20	±0.30	±0.40	-25.0	-20.0	-18.0
	17.0	±0.20	±0.30	±0.40	-25.0	-20.0	-18.0
	17.5	±0.20	±0.30	±0.40	-25.0	-20.0	-18.0
	18.0	±0.20	±0.30	±0.40	-25.0	-20.0	-18.0
	18.5	±0.20	±0.30	±0.40	-25.0	-20.0	-18.0
19.0	±0.20	±0.30	±0.40	-25.0	-20.0	-18.0	
19.5	±0.20	±0.30	±0.40	-25.0	-20.0	-18.0	
20.0	±0.20	±0.30	±0.40	-25.0	-20.0	-18.0	

# 1.8GHz Forward Linear Equalizer

## Outline Drawing(mm) Features



- RF Power:0.15W Max.
- Pin material:Brass H62.
- Plastic material:PC (ABS) alloy.
- Electrical Interface:3 pins, center ground.
- Body Material/Color:Yellow, Black, Blue, etc
- Operating temperature range:-40°Cto+120°C
- Storage temperature range: -45°C to +125°C
- 
- 1.8 GHz Forward Linear Equalizers produce a linear tilt that frequency response is opposite. They used in interstage equalizer location to achieve the desired station output tilt. The dB values and rated high frequency 1800 MHz are printed on the top of each equalizer.
- These accessories can be used for node, cable TV units, etc.

Part Number	A±0.30	B±0.30	C±0.50	D±0.05	E±0.10	F±0.50	G±0.30	H±0.50	I±0.30	J±0.30	K Ref
LEQ-12 Series	13.00	11.00	17.00	1.00	3.175	5.00	6.50	12.00	Not	4.00	Not
LEQ-26 Series	13.00	11.00	31.00	1.00	3.175	5.00	6.50	26.00	Not	4.00	Not
LEQ-35 Series	13.00	11.00	40.00	1.00	3.175	5.00	6.50	35.00	5.50	4.00	1.80

## Specifications

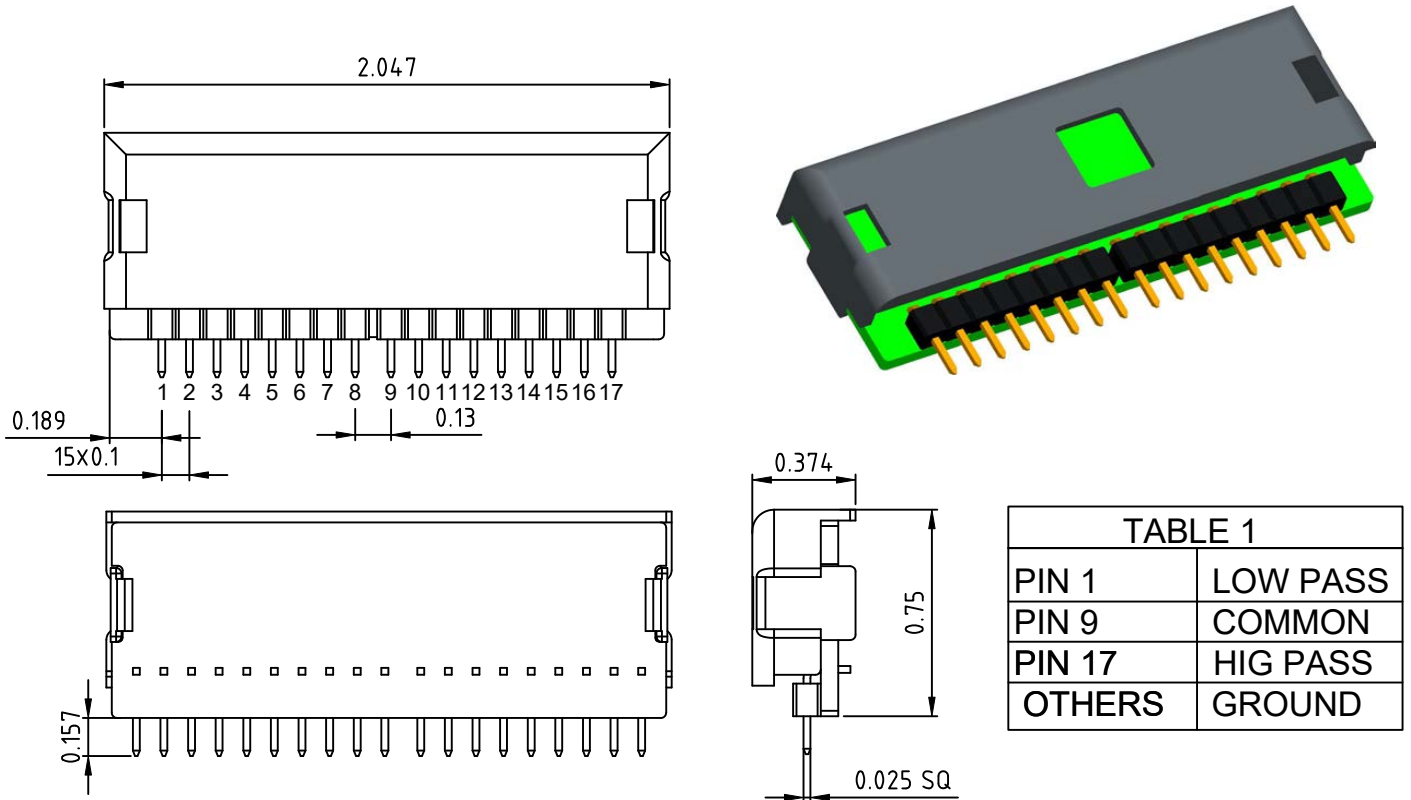
Item	Units	Value											
		2.0	3.0	4.0	5.0	6.0	7.0	8.0	9.0	10.0	11.0	12.0	13.0
EQ Values	dB	2.0	3.0	4.0	5.0	6.0	7.0	8.0	9.0	10.0	11.0	12.0	13.0
Tilt ( 54 to 1800 MHz )	dB	2.0	3.0	4.0	5.0	6.0	7.0	8.0	9.0	10.0	11.0	12.0	13.0
Tilt ( 54 to 1218 MHz )	dB	1.3	2.0	2.6	3.3	4.0	4.6	5.2	5.9	6.5	7.2	7.9	8.5
Tilt ( 54 to 1000 MHz )	dB	1.1	1.6	2.2	2.7	3.4	3.8	4.3	4.9	5.4	5.9	6.5	7.0
Tilt ( 54 to 870 MHz )	dB	0.9	1.4	1.9	2.3	2.8	3.3	3.7	4.2	4.7	5.1	5.6	6.1
Frequency	MHz	54 - 1800											
Tolerance EQ Val.max.	dB	± 05											
Insertion Loss	dB	1.0± 0.3											
Flatness	dB	± 0.3											
Return Loss	dB	17	18										
Impedance	Ω	75											

Note: Unless otherwise noted, all specifications reflect typical performance and are referenced to 25°C.

Specifications are based upon measurements made in accordance with SCTE/ANSI standards (where applicable), using standard frequency assignments.

# 1.8GHz Plug-in Diplex Fliter

## Mechanical Dimensions(inches):



## Notes:

1. Cover Material: PC(UL94V0)
2. Material finish meet RoHS2 AND PFOS REQUEST
3. Tolerance unless otherwise specified is: 0-5:±0.15, 6-18:±0.20, 18-50:±0.25, 50-120:±0.30

## Environmental Requirements:

Units shall meet all specifications at ambient temperature of -30 to +85 degrees Celsius.

EASTEVER P/N	MINIMUM RETURN FREQUENCY $F_{minret}$	MAXIMUM RETURN FREQUENCY $F_{maxret}$	MINIMUM FORWARD FREQUENCY $F_{minfwd}$	MAXIMUM FORWARD FREQUENCY $F_{maxfwd}$
EDF005182-085102	10 MHz	85 MHz	102 MHz	1.794 GHz
EDF005182-204258	10 MHz	204 MHz	258 MHz	1.794 GHz
EDF005182-396492	10 MHz	396 MHz	492 MHz	1.794 GHz
EDF005182-492606	10 MHz	492 MHz	606 MHz	1.794 GHz
EDF005182-684834	10 MHz	684 MHz	834 MHz	1.794 GHz

# 1.8GHz Plug-in Diplex Fliter

85/102MHz, 204/258MHz Electrical characteristics SPEC @ 25 °C

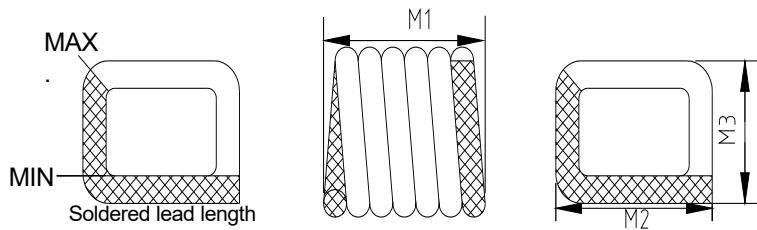
Parameter	Units	Test Class	Port	Value	Notes	Value	Notes
Insertion Loss	dB	A, B, C	Low Pass	1.3	Max, 85 MHz	1.2	Max, 204 MHz
			High Pass	1.3	Max, 102 MHz	1.2	Max, 258 MHz
				1.4	Max, 1794 MHz	1.4	Max, 1794 MHz
Flatness	dB	B, C	Low Pass	0.1	Max, 10 - 68 MHz	0.1	Max, 10 - 164 MHz
			High Pass	0.15	Max, 222 - 1578 MHz	0.15	Max, 430 - 1578 MHz
Roll Off	dB	B, C	Low Pass	1.1	Max, 68 - 85 MHz	0.8	Max, 164 - 204 MHz
				1.1	Max, 102 - 222 MHz	0.8	Max, 258 - 430 MHz
			High Pass	0.3	Max, 1578 - 1794 MHz	0.3	Max, 1578 - 1794 MHz
Return Loss	dB	A, B, C	Low Pass	20	Min	20	Min
				22	Min, 10 - 85 MHz	22	Min, 10 - 204 MHz
			Common	22	Min, 102 - 600 MHz	22	Min, 258 - 600 MHz
				19	Min, 601 - 1794 MHz	19	Min, 601 - 1794 MHz
				High Pass	20	Min, 102 - 600 MHz	20
19	Min, 601 - 1794 MHz	19	Min, 601 - 1794 MHz				
Isolation	dB	A, B, C	HP-LP	50	Min, 10 - 85	50	Min, 10 - 204
				40	Min, 86 - 101 MHz	40	Min, 205 - 257 MHz
				50	Min, 102 - 600 MHz	50	Min, 258 - 600 MHz
				45	Min, 601 - 1000 MHz	45	Min, 601 - 1000 MHz
				40	Min, 1001 - 1794 MHz	40	Min, 1001 - 1794 MHz
Group Delay	nS	B, C	Low Pass	8	Max, 72.2 - 78.6 MHz	5	Max, 191.2 - 197.6 MHz
				24	Max, 78.6 - 85 MHz	7	Max, 197.6 - 204 MHz
			High Pass	21	Max, 102 - 108 MHz	5	Max, 258 - 264 MHz
				8	Max, 108 - 114 MHz	3	Max, 264 - 270 MHz

492/606MHz, 684/834MHz Electrical characteristics SPEC @ 25 °C

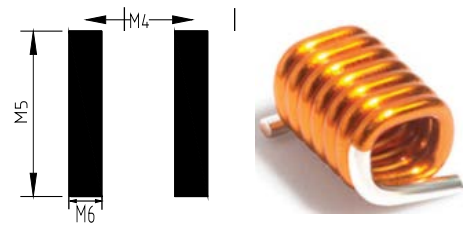
Parameter	Units	Test Class	Port	Value	Notes	Value	Notes
Insertion Loss	dB	A, B, C	Low Pass	1.4	Max, 492 MHz	1.4	Max, 684 MHz
			High Pass	1.4	Max, 606 MHz	1.4	Max, 834 MHz
				1.4	Max, 1794 MHz	1.4	Max, 1794 MHz
Flatness	dB	B, C	Low Pass	0.1	Max, 10 - 394 MHz	0.15	Max, 10 - 547 MHz
			High Pass	0.15	Max, 800 - 1578 MHz	0.15	Max, 1000 - 1578 MHz
Roll Off	dB	B, C	Low Pass	0.7	Max, 394 - 492 MHz	0.8	Max, 547 - 684 MHz
				0.6	Max, 606 - 800 MHz	0.6	Max, 834 - 1000 MHz
			High Pass	0.3	Max, 1578 - 1794 MHz	0.3	Max, 1578 - 1794 MHz
Return Loss	dB	A, B, C	Low Pass	20	Min, 10 - 492 MHz	20	Min, 10 - 684 MHz
				22	Min, 10 - 492 MHz	22	Min, 10 - 684 MHz
			Common	20	Min, 606 - 1000 MHz	20	Min, 834 - 1000 MHz
				19	Min, 1001 - 1794 MHz	19	Min, 1001 - 1794 MHz
				High Pass	20	Min, 606 - 1000 MHz	20
19	Min, 1001 - 1794 MHz	19	Min, 1001 - 1794 MHz				
Isolation	dB	A, B, C	HP-LP	60	Min, 10 - 200 MHz	60	Min, 10 - 200 MHz
				50	Min, 201 - 492 MHz	50	Min, 201 - 684 MHz
				43	Min, 493 - 605 MHz	43	Min, 685 - 833 MHz
				50	Min, 606 - 1000 MHz	50	Min, 834 - 1000 MHz
				45	Min, 1001 - 1220 MHz	45	Min, 1001 - 1220 MHz
Group Delay	nS	B, C	Low Pass	40	Min, 1221 - 1794 MHz	40	Min, 1221 - 1794 MHz
				3	Max, 479.2 - 485.6 MHz	3	Max, 671.2 - 677.6 MHz
			High Pass	3	Max, 485.6 - 492 MHz	3	Max, 677.6 - 684 MHz
				3	Max, 606 - 612 MHz	3	Max, 834 - 840 MHz

# Square Air Core Inductors

SHAPE AND DIMENSIONS (UNIT:mm):



RECOMMENDED PATTERNS:



Part Number	M1	M2	M3	M4	M5	M6	Weight (mg)	Tape pocket Depth (mm)
SSAC0806-5N5J	1,346±0.102	1,829±0.254	1,397±0.102	0,962	2,6	0,51	9,9	1,42
SSAC0806-6N0J	1,295±0.102	1,829±0.254	1,397±0.102	1,02	2,6	0,51	8,5	1,42
SSAC0806-8N9J	1,626±0.152	1,829±0.254	1,397±0.102	1,32	2,6	0,51	10,8	1,55
SSAC0806-12NJ	1,930±0.152	1,829±0.254	1,397±0.102	1,63	2,6	0,51	13,6	1,52
SSAC0806-16NJ	2,286±0.152	1,829±0.254	1,397±0.102	1,96	2,6	0,51	16,1	1,50
SSAC0806-19NJ	2,591±0.152	1,829±0.254	1,397±0.102	2,29	2,6	0,51	18,7	1,55
SSAC0807-6N9J	1,295±0.102	1,829±0.254	1,524±0.254	1,02	2,6	0,51	9,1	1,60
SSAC0807-10NJ	1,626±0.152	1,829±0.254	1,524±0.254	1,32	2,6	0,51	11,5	1,57
SSAC0807-11NJ	1,549±0.152	1,829±0.254	1,524±0.254	1,24	2,6	0,51	11,5	1,55
SSAC0807-14NJ	1,930±0.152	1,829±0.254	1,524±0.254	1,63	2,6	0,51	14,0	1,60
SSAC0807-17NJ	2,286±0.152	1,829±0.254	1,524±0.254	1,96	2,6	0,51	16,8	1,68
SSAC0807-22NJ	2,591±0.152	1,829±0.254	1,524±0.254	2,29	2,6	0,51	19,4	1,68
SSAC0908-8N1J	1,473±0.152	2,134±0.152	1,829±0.203	1,12	2,8	0,64	12,8	2,01
SSAC0908-12NJ	1,854±0.152	2,134±0.152	1,829±0.203	1,45	2,8	0,64	16,9	1,96
SSAC0908-14NJ	1,549±0.152	2,134±0.152	1,829±0.203	1,24	2,8	0,64	13,5	1,52
SSAC0908-17NJ	2,210±0.152	2,134±0.152	1,829±0.203	1,83	2,8	0,64	21,1	2,01
SSAC0908-22NJ	2,565±0.152	2,134±0.152	1,829±0.203	2,18	2,8	0,64	24,7	1,98
SSAC0908-23NJ	2,235±0.152	2,134±0.152	1,829±0.203	1,90	2,8	0,64	19,2	1,98
SSAC0908-25NJ	2,972±0.152	2,134±0.155	1,829±0.206	2,57	2,8	0,64	27,6	2,01
SSAC0908-27NJ	2,972±0.152	2,134±0.152	1,829±0.203	2,57	2,8	0,64	28,7	2,01

Electrical Characteristics @25°C:

Eastever P/N	Inductance (nH)	tol	Q typ	SRF typ (GHz)	DCR max (mOhm)	Irms (A)	Coilcraft P/N
SSAC0806-5N5J	5.5	±5%	60	4.9	3.4	2.9	0806SQ-5N5
SSAC0806-6N0J	6.0	±5%	64	5.2	6.0	2.9	0806SQ-6N0
SSAC0806-8N9J	8.9	±5%	90	4.3	7.0	2.9	0806SQ-8N9
SSAC0806-12NJ	12.3	±5%	90	4.8	8.0	2.9	0806SQ-12N
SSAC0806-16NJ	15.7	±5%	90	4.4	9.0	2.9	0806SQ-16N
SSAC0806-19NJ	19.4	±5%	90	4.0	10.0	2.9	0806SQ-19N
SSAC0807-6N9J	6.9	±5%	100	4.6	6.0	2.7	0807SQ-6N9
SSAC0807-10NJ	10.2	±5%	100	4.0	7.0	2.7	0807SQ-10N
SSAC0807-11NJ	11.2	±5%	90	3.6	6.3	2.7	0807SQ-11N
SSAC0807-14NJ	13.7	±5%	100	4.3	8.0	2.7	0807SQ-14N
SSAC0807-17NJ	17.0	±5%	100	4.0	9.0	2.7	0807SQ-17N
SSAC0807-22NJ	22.0	±5%	100	3.5	10.0	2.7	0807SQ-22N
SSAC0908-8N1J	8.1	±5%	130	5.2	6.0	4.4	0908SQ-8N1
SSAC0908-12NJ	12.1	±5%	130	4.3	7.0	4.4	0908SQ-12N
SSAC0908-14NJ	14.7	±5%	90	3.0	7.2	4.4	0908SQ-14N
SSAC0908-17NJ	16.6	±5%	130	3.4	8.0	4.4	0908SQ-17N
SSAC0908-22NJ	21.5	±5%	130	3.7	9.0	4.4	0908SQ-22N
SSAC0908-23NJ	23.0	±5%	120	2.6	10.0	4.4	0908SQ-23N
SSAC0908-25NJ	25.0	±5%	130	2.5	10.0	4.4	0908SQ-25N
SSAC0908-27NJ	27.3	±5%	130	3.2	10.0	4.4	0908SQ-27N

※ Inductance measured at 400 MHz, 0.1 Vrms, Q measured at 400 MHz;

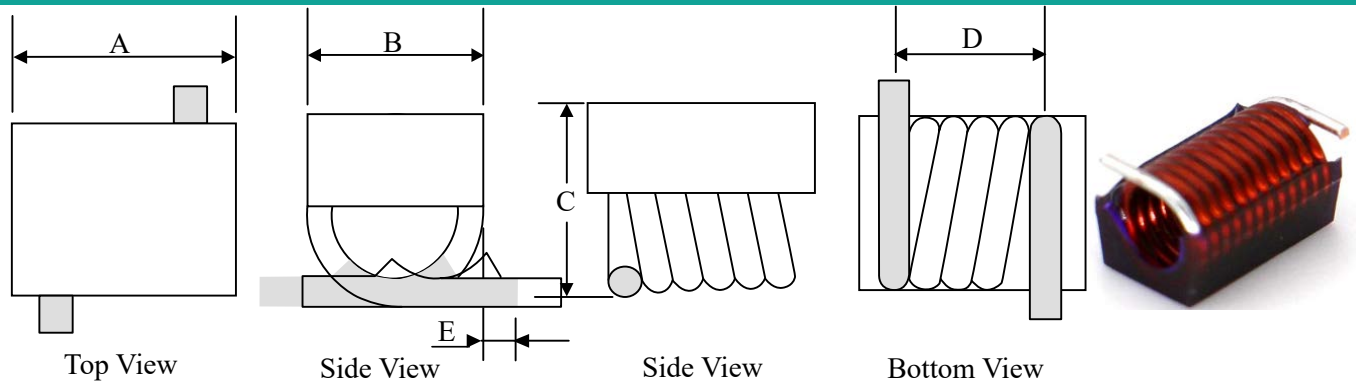
※ Operating temperature range: -40°C to +105°C; Storage temperature range: -55°C to +125°C



Balun Transformer | Coupler | Divider | Inductor | Choke | Bead Air Coil | LAN Transformer

# Flat Top Air Core Inductors

## Air Core Coil Inductor Dimensions & Configurations (Unit In mm)



Part Number	Type	A	B	C	D	E
SMTAM1210		3.30± 0.3	2.60± 0.2	2.70± 0.2	2.90± 0.3	0.70± 0.2
SMTAM2410		6.30± 0.3	3.00± 0.2	3.00± 0.2	5.80± 0.3	0.70± 0.2
SMTAM1812		4.90± 0.3	3.80± 0.2	3.50± 0.2	4.30± 0.4	1.00± 0.3
SMTAM3618		8.70± 0.3	4.40 ± 0.3	5.00 ± 0.2	8.00 ± 0.5	1.30 ± 0.4

## SPECIFICATION

Eastever	P/N	(A)Max	(nH)	Q(min)	(MHz)	(mΩ)Max	(GHz)	Coilcraft P/N	Würth P/N
SMTAM1210-2N5J		4.0	2.5	145	150	1.1	>3.0	A01T	744913025
SMTAM1210-5N0J		4.0	5.0	140	150	1.8	>3.0	A02T	744913050
SMTAM1210-8N0J		4.0	8.0	140	150	2.6	3.0	A03T	744913080
SMTAM1210-12N5J		4.0	12.5	137	150	3.4	>3.0	A04T	744913112
SMTAM1210-18N5J		4.0	18.5	132	150	3.9	>2.5	A05T	744913118
SMTAM2410- 17N5J		4.0	17.5	100	150	4.5	>2.2	B06T	744914117
SMTAM2410- 22NJ		4.0	22.0	100	150	5.2	>2.0	B07T	744914122
SMTAM2410- 28NJ		4.0	28.0	100	150	6.0	>1.8	B08T	744914128
SMTAM2410- 35N5J		4.0	35.5	100	150	6.8	>1.2	B09T	744914135
SMTAM2410- 43NJ		4.0	43.0	100	150	7.9	>1.0	B10T	744914143
SMTAM1812- 22NJ		3.0	22.0	100	150	4.2	3.20	1812SMS-22N	744912122
SMTAM1812- 27NJ		3.5	27.0	100	150	4.0	2.70	1812SMS-27N	744912127
SMTAM1812 - 33NJ		3.0	33.0	100	150	4.8	2.50	1812SMS-33N	744912133
SMTAM1812 - 39NJ		3.0	39.0	100	150	4.4	2.10	1812SMS-39N	744912139
SMTAM1812 - 47NJ		3.0	47.0	100	150	5.6	2.10	1812SMS-47N	744912147
SMTAM1812 - 56NJ		3.0	56.0	100	150	6.2	1.50	1812SMS-56N	744912156
SMTAM1812 - 68NJ		2.5	68.0	100	150	8.2	1.50	1812SMS-68N	744912168
SMTAM1812 - 82NJ		2.5	82.0	100	150	9.4	1.30	1812SMS-82N	744912182
SMTAM1812 - 100NJ		1.7	100.0	100	150	12.3	1.20	1812SMS-R10	744912210
SMTAM1812- 120NJ		1.5	120.0	100	150	17.3	1.10	1812SMS-R12	744912212
SMTAM1812 - 150NJ		1.2	150.0	100	150	33.0	0.75	1812SMS-R15	

※ Inductance measured at 150 MHz, Q measured at 150 MHz;

※ Operating temperature range: -40 °C to +105 °C; Storage temperature range: -55 °C to +125 °C

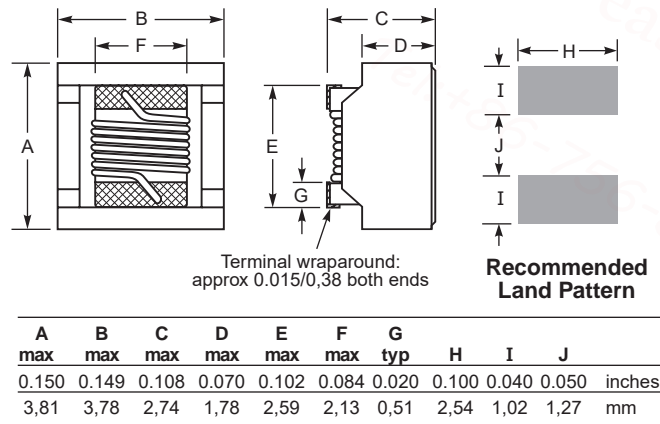
# Filter Inductors

## EWS1008PS-Series

### • Features

- Higher SRF than our other power inductors
- High inductance with tight tolerance
- Excellent current handling for a part this size
- Ambient temperature  $-40^{\circ}\text{C}$  to  $+105^{\circ}\text{C}$  with  $(40^{\circ}\text{C}$  rise)  $I_{\text{rms}}$  current.
- Maximum part temperature  $+145^{\circ}\text{C}$  (ambient + temp rise). Derating.
- Storage temperature Component:  $-40^{\circ}\text{C}$  to  $+145^{\circ}\text{C}$ .
- Inductance measured at 100 kHz, 0.1 Vrms, using Agilent/HP 4263B impedance analyzer or equivalent.  
Q measured at 1 MHz using an Agilent/HP 16193 test fixture and an Agilent/HP 4291 or equivalent.

### Shapes and Dimensions (Unit:mm)

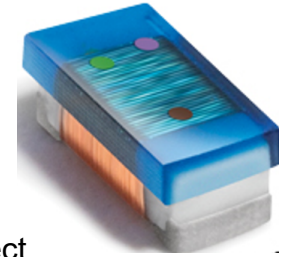


### Electrical Characteristics @25°C:

Eastever P/N	Inductance $\pm 10\%$ ( $\mu\text{H}$ )	Q min	DCR max (Ohms)	SRF typ (MHz)	Isat max (A)	Coilcraft P/N
EWS1008PS-1R0MST	1.0	22	0.06	254	3.0	1008PS-102KR_
EWS1008PS-1R5MST	1.5	22	0.10	220	2.5	1008PS-152KR_
EWS1008PS-2R2MST	2.2	25	0.12	200	2.4	1008PS-222KR_
EWS1008PS-2R7MST	2.7	22	0.22	150	1.7	1008PS-272KR_
EWS1008PS-3R3MST	3.3	22	0.84	150	1.5	1008PS-332KR_
EWS1008PS-3R9MST	3.9	22	0.30	150	1.5	1008PS-392KR_
EWS1008PS-4R7MST	4.7	22	0.35	120	1.2	1008PS-472KR_
EWS1008PS-5R6MST	5.6	25	0.36	100	1.3	1008PS-562KR_
EWS1008PS-6R8MST	6.8	25	0.58	100	1.3	1008PS-682KR_
EWS1008PS-100MST	10	25	0.92	105	0.84	1008PS-103KR_
EWS1008PS-150MST	15	25	1.15	35	0.81	1008PS-153KR_
EWS1008PS-220MST	22	25	1.40	25	0.67	1008PS-223KR_
EWS1008PS-330MST	33	25	1.61	20	0.53	1008PS-333KR_
EWS1008PS-390MST	39	25	1.85	16	0.49	1008PS-393KR_
EWS1008PS-470MST	47	25	2.50	19	0.47	1008PS-473KR_
EWS1008PS-680MST	68	25	3.80	12	0.42	1008PS-683KR_
EWS1008PS-820MST	82	25	4.30	9	0.33	1008PS-823KR_
EWS1008PS-101MST	100	25	6.50	7	0.35	1008PS-104KR_
EWS1008PS-121MST	120	25	7.00	7	0.30	1008PS-124KR_
EWS1008PS-151MST	150	25	7.50	5	0.27	1008PS-154KR_
EWS1008PS-221MST	220	25	10.0	4	0.21	1008PS-224KR_
EWS1008PS-331MST	330	25	11.5	3	0.19	1008PS-334KR_
EWS1008PS-471MST	470	23	16.3	3	0.14	1008PS-474KR_
EWS1008PS-681MST	680	18	24.0	2	0.11	1008PS-684KR_
EWS1008PS-821MST	820	18	26.0	2	0.10	1008PS-824KR_
EWS1008PS-102MST	1000	18	29.0	2	0.11	1008PS-105KR_

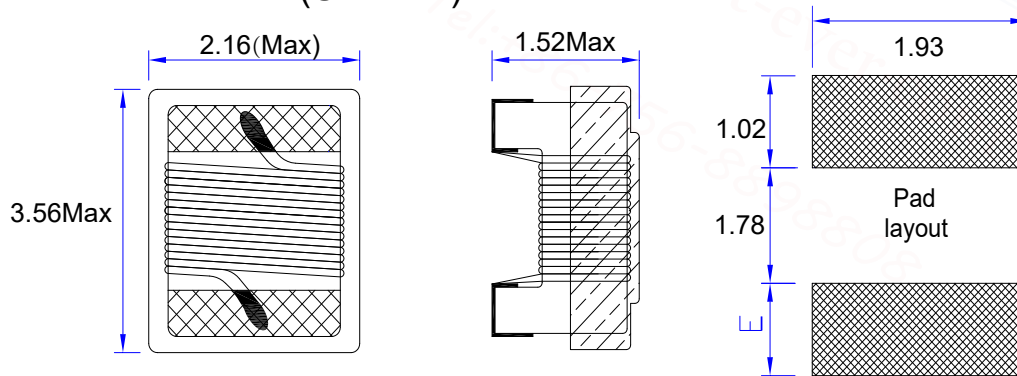
# Wire Wound Chip Inductors

## EWS1206UC-Series



- **Features**
  - High SRF and excellent Q values
  - 31 inductance values from 3.3 to 1200 nH
  - Excellent in solderability and heat resistance
  - Using terminal electrode structure to restrain the parasitic component effect
  - Ambient temperature  $-40^{\circ}\text{C}$  to  $+125^{\circ}\text{C}$  with Irms current Maximum part temperature  $+140^{\circ}\text{C}$  (ambient + temp rise).
  - Storage temperature Component:  $-40^{\circ}\text{C}$  to  $+140^{\circ}\text{C}$ .
- **Applications**
  - Portable communication equipment and PDA, High speed electronic device
  - Used for radiation high speed noise suppression

## Shapes and Dimensions (Unit:mm)

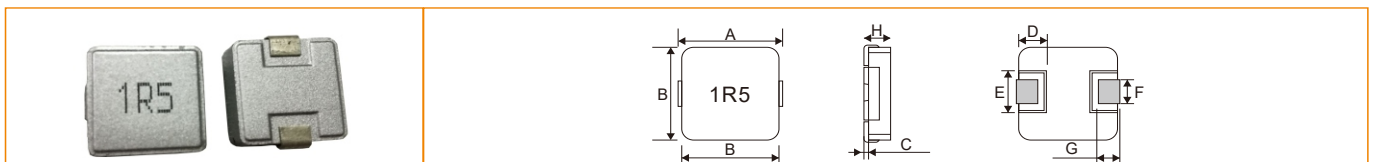


## Electrical Characteristics @25°C: (TOLERANCE : G $\pm$ 2%; J $\pm$ 5%; K $\pm$ 10%; M $\pm$ 20%)

Eastever P/N <sup>1</sup>	Inductance <sup>2</sup> (nH)	Percent tolerance <sup>3</sup>	Q min <sup>4</sup>	SRF min <sup>5</sup> (MHz)	DCR max <sup>6</sup> (Ohms)	Irms <sup>7</sup> (mA)	Coilcraft P/N
EWS1206UC-3N3XST	3.3 @ 100 MHz	J,K,M	20 @ 300 MHz	6200	0.070	1000	1206CS-030X_E
EWS1206UC-6N8XST	6.8 @ 100 MHz	J,K,M	30 @ 300 MHz	5500	0.070	1000	1206CS-060X_E
EWS1206UC-10NXST	10 @ 100 MHz	J,K,M	40 @ 300 MHz	4000	0.090	1000	1206CS-100X_E
EWS1206UC-12NXST	12 @ 100 MHz	J,K,M	40 @ 300 MHz	3200	0.080	1000	1206CS-120X_E
EWS1206UC-15NXST	15 @ 100 MHz	J,K,M	40 @ 300 MHz	3200	0.120	1000	1206CS-150X_E
EWS1206UC-18NXST	18 @ 100 MHz	J,K,M	45 @ 300 MHz	2800	0.120	1000	1206CS-180X_E
EWS1206UC-22NXST	22 @ 100 MHz	J,K,M	50 @ 300 MHz	2200	0.120	1000	1206CS-220X_E
EWS1206UC-27NXST	27 @ 100 MHz	J,K,M	50 @ 300 MHz	1800	0.120	1000	1206CS-270X_E
EWS1206UC-33NXST	33 @ 100 MHz	J,K,M	50 @ 300 MHz	1800	0.120	1000	1206CS-330X_E
EWS1206UC-39NXST	39 @ 100 MHz	J,K,M	50 @ 300 MHz	1800	0.120	1000	1206CS-390X_E
EWS1206UC-47NXST	47 @ 100 MHz	J,K,M	50 @ 300 MHz	1500	0.130	1000	1206CS-470X_E
EWS1206UC-56NXST	56 @ 100 MHz	J,K,M	55 @ 300 MHz	1450	0.140	1000	1206CS-560X_E
EWS1206UC-68NXST	68 @ 100 MHz	J,K,M	55 @ 300 MHz	1200	0.260	900	1206CS-680X_E
EWS1206UC-82NXST	82 @ 100 MHz	J,K,M	55 @ 300 MHz	1200	0.210	900	1206CS-820X_E
EWS1206UC-R10XST	100 @ 100 MHz	G,J,K,M	55 @ 300 MHz	1100	0.300	850	1206CS-101X_E
EWS1206UC-R12XST	120 @ 100 MHz	G,J,K,M	60 @ 300 MHz	1100	0.300	800	1206CS-121X_E
EWS1206UC-R15XST	150 @ 100 MHz	G,J,K,M	55 @ 300 MHz	950	0.310	750	1206CS-151X_E
EWS1206UC-R18XST	180 @ 50 MHz	G,J,K,M	50 @ 300 MHz	900	0.430	700	1206CS-181X_E
EWS1206UC-R22ST	220 @ 50 MHz	G,J,K,M	60 @ 300 MHz	760	0.560	670	1206CS-221X_E
EWS1206UC-R27XST	270 @ 50 MHz	G,J,K,M	50 @ 300 MHz	730	0.560	630	1206CS-271X_E
EWS1206UC-R33XST	330 @ 50 MHz	G,J,K,M	45 @ 150 MHz	650	0.700	590	1206CS-331X_E
EWS1206UC-R39XST	390 @ 50 MHz	G,J,K,M	45 @ 150 MHz	600	1.300	530	1206CS-391X_E
EWS1206UC-R47XST	470 @ 50 MHz	G,J,K,M	45 @ 150 MHz	550	1.300	490	1206CS-471X_E
EWS1206UC-R56XST	560 @ 35 MHz	G,J,K,M	45 @ 150 MHz	470	1.340	460	1206CS-561X_E
EWS1206UC-R62XST	620 @ 35 MHz	G,J,K,M	45 @ 150 MHz	470	1.580	430	1206CS-621X_E
EWS1206UC-R68XST	680 @ 35 MHz	G,J,K,M	45 @ 150 MHz	450	1.580	430	1206CS-681X_E
EWS1206UC-R75XST	750 @ 35 MHz	G,J,K,M	45 @ 150 MHz	440	2.250	400	1206CS-751X_E
EWS1206UC-R82XST	820 @ 35 MHz	G,J,K,M	45 @ 150 MHz	420	2.600	400	1206CS-821X_E
EWS1206UC-R91XST	910 @ 35 MHz	G,J,K,M	45 @ 150 MHz	410	4.030	400	1206CS-911X_E
EWS1206UC-1R0XST	1000 @ 35 MHz	G,J,K,M	45 @ 150 MHz	400	4.420	320	1206CS-102X_E
EWS1206UC-1R2XST	1200 @ 35 MHz	G,J,K,M	45 @ 150 MHz	380	5.070	300	1206CS-122X_E

# SMD Power Inductor & Molding Power Inductor

PHOTO	Part NO.	Inductance	Part NO.	Inductance	PHOTO	Part NO.	Inductance
 <b>EP Series</b>	EP31	1.0-150	EP54	10-470	 <b>EI Series</b>	EI 321618	1.0-100
	EP32	1.0-220	EP73	10-1000		EI 322520	1.0-150
	EP42	2.7-150	EP75	10-560		EI 453226	1.0-180
	EP43	1.0-680	EP104	10-820		EI 575047	1.0-8200
	EP52	10.0-270	EP105	1.2-820			
	EP53	1.0-1000	EP106	1.2-1000			
 <b>EF Series</b>	EF 1608	1.0-1000	EF 3340	10-1000.0	 <b>ED Series</b>	ED 8D28	2.5-100
	EF 3310	10-1000	EF 5022	3.3-1000.0		ED 8D38	1.8-100
	EF 3316	10-1000	---	---		ED 8D48	2.0-100
 <b>ED Series</b>	ED 2D11	1.5-47	ED 4D18	1.0-47	 <b>EQ Series</b>	EQ 103	10-150
	ED 2D18	2.2-47	ED 4D28	1.5-100		EQ 104	1.5-330
	ED 3D16	1.5-33	ED 5D18	3.3-100		EQ 105	10-1000
	ED 3D28	10-220	ED 5D28	1.0-150			
	ED 4D11	2.0-33	ED 6D28	3.0-100			
	ED 4D16	3.0-33	ED 6D38	3.3-1000			
 <b>ERH Series</b>	ERH 62	2.9-330	ERH 124	3.9-330	 <b>EC Series</b>	EC 1608	1.0-1000
	ERH 64	10-1000	ERH 125	1.3-1000		EC 3316	1.0-47
	ERH 73	10-1000	ERH 127	1.2-1000		EC 5022	10-1000
	ERH 74	10-1000	ERH 129	1.2-1000			
 <b>EB Series</b>	EB6030	4.7-100	EB 7050	3.3-1000	 <b>ERB Series</b>	ERB 63	1.0-470
	EB6050	6.8-100	EB 1045	10.0-1000		ERB 74	1.0-470
	EB7030	3.3-100	EB 1270	1.2-220		ERB 105	10-560



PART NO	L (0A) uH	I <sub>rms</sub> (Amperes)	I <sub>sat</sub> (Amperes)	DCR(mΩ)TYPE	DCR(mΩ)MAX	Size (L*W*H)
ET4020	0.1~10.0	1.0~11.0	2.0~28.0	3.0~260.0	5.0~294.0	4.3*4.0*2.0mm
ET5018	0.1~10.0	1.8~13.0	3.2~25.0	2.1~148.0	2.7~178.0	5.2*4.7*2.0mm
ET5030	0.68~10.0	2.0~7.0	3.0~14.0	9.0~110.0	11.0~132.0	5.2*4.7*3.0mm
ET7012	0.56~10.0	1.5~6.0	2.5~11.0	13.5~195.0	16.0~234.0	6.6*7.4*1.2mm
ET7018	0.1~10.0	2.0~16.0	4.0~30.0	2.5~147.0	3.5~180.0	6.6*7.4*2.0mm
ET7025	0.47~10.0	2.0~10.0	4.0~18.0	5.6~81.0	0.5~96.0	6.6*7.4*2.4mm
ET7030	0.33~10.0	3.0~16.0	5.0~30.0	2.3~78.0	2.8~94.0	6.6*7.4*3.0mm
ET7030T	0.33~10.0	34.0~15.0	6.5~24.0	2.9~70.0	3.5~84.0	6.6*7.4*3.0mm
ET7040	0.47~22.0	2.0~12.0	4.0~22.0	3.4~98.0	4.0~117.0	6.6*7.4*4.0mm
ET7050	0.47~47.0	1.5~14.0	2.5~24.0	3.1~155.0	4.0~186.0	6.6*7.4*5.0mm
ET8050	1.0~56.0	2.0~11.0	3.5~22.0	4.7~170.0	5.6~187.0	8.0*9.0*5.0mm
ET1040	0.22~47.0	2.5~30.0	5.0~54.0	0.8~127.0	1.0~145.0	11.5*10.5*4.0mm
ET1050	0.82~100.0	2.5~18.0	4.0~34.0	1.8~49.0	1.0~58.0	11.5*10.5*5.0mm
ET1240	0.22~10.0	4.0~35.0	7.0~55.0	0.8~49.0	1.0~58.0	13.5*12.8*4.0mm
ET1250	0.36~10.0	7.0~30.0	15.0~55.0	0.82~19.5	1.0~24.0	13.5*12.8*5.0mm
ET1265	4.7~100.0	2.0~28.0	3.5~45.0	1.1~110.0	1.8~125.0	13.5*12.8*6.5mm
ET1770	1.5~68.0	4.0~40.0	7.0~65.0	1.30~104.0	1.9~115.0	18.0*17.0*7.0mm

# Common Mode Choke & Choke Coils





PHOTO	Part NO.	Inductance	Part NO.	Inductance
 <p><b>EPNR Series</b></p>	EPNR3010	1.00-56.0	EPNR4030	1.0-470.0
	EPNR3012	0.82-100.0	EPNR5020	1.0-100.0
	EPNR3015	1.00-68.0	EPNR5040	1.0-1000
	EPNR4012	0.82-100.0	EPNR6020	0.68-47.0
	EPNR4018	1.00-220.0	EPNR6045	0.82-1500
	EPNR4020	1.00-100.0	EPNR8040	0.82-680.0
 <p><b>ARA Series</b></p>	ARA0310	1.0-6.00	ARA0615	1.0-22.0
	ARA0315	2.2-10.0	ARA0620	2.0-15.0
	ARA0415	1.2-7.20	ARA0625	3.0-22.0
	ARA0515	2.2-10.0	ARA0630	4.5-22.0
	ARA0520	2.2-15.0	ARA0830	4.7-22.0
	ARA0525	4.7-22.0	ARA1030	8.2-22.0
 <p><b>DR2W Series</b></p>	DR2W0406	1.0-1000	DR2W0912	10-56000
	DR2W0507	3.3-2200	DR2W1016	1.2-68000
	DR2W0608	10-22000	DR2W1216	1.2-82000
	DR2W0810	10-47000	DR2W1618	1.2-100000
 <p><b>TC Series</b></p>	TC20V	22-2200	TC33V	18-220
	TC23V	27-2700	TC40V	39-330
	TC27V	33-4300	TC47V	27-330

PHOTO	Part NO.	Impedance
 <p><b>CMF Series</b></p>	CMF7060	70-3000
	CMF9070	300-2700
	CMF1211	230-2700
	CMF1513	300-700
 <p><b>CMF Series</b></p>	CMF7560	200-600
	CMF1080	500-800
	ED 8D48	2.0-100
 <p><b>R6H0610 Series</b></p>	R6H0610-2.0T	500.0
	R6H0610-2.5T	625.0
	R6H0610-3.0T	790.0
 <p><b>617DB Series</b></p>	671DB-900	90.0
	671DB-121	120.0
	671DB-161	160.0
	671DB-221	220.0

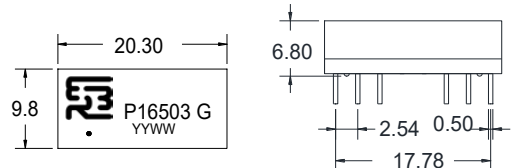
## 10/100/1000M/10G BASE-T Lan Transformer

**P16503G**



10/100 Base-T Transformer

Speed 10/100Mbps  
 Number of Ports Single  
 Application - LAN PC Card, Card Bus  
 Package Type Package Pin  
 Size Operating 20.3 x 9.8x 6.8mm  
 Temperature 0 ~ +70℃

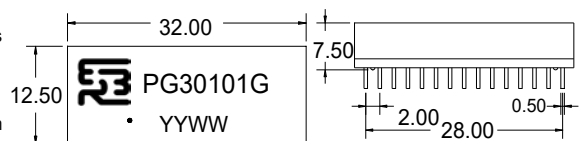


**PG30101G**



100/1000 Base-T Transformer

Speed 100/1000Mbps  
 Number of Ports Single  
 Application - LAN PC Card, Card Bus  
 Package Type Package Pin  
 Size Operating 32.0 x 12.5x 7.5mm  
 Temperature 0 ~ +85℃

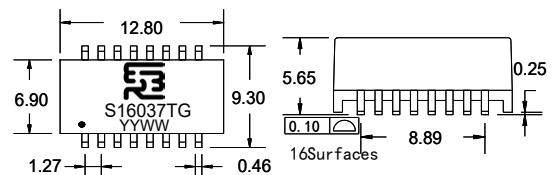


**S16037TG**



10/100 Base-T Transformer Equivalent to H1102NL

Speed 10/100Mbps  
 Number of Ports Single  
 Application - LAN PC Card, Card Bus  
 Package Type Package SMD  
 Size Operating 12.8 x 9.3x 5.7mm  
 Temperature 0 ~ +85℃

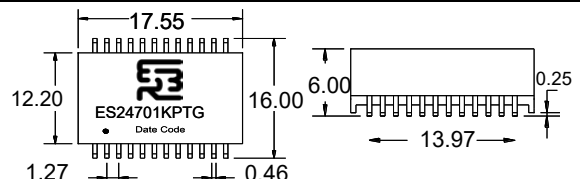


**ES24701KPTG**



100/1000 Base-T Transformer Equivalent to SM51589PEL

Speed 100/1000Mbps  
 Number of Ports Single  
 Application - LAN PC Card, Card Bus  
 Package Type Package SMD  
 Size Operating 17.6 x 16.6x 6.0mm  
 Temperature 0 ~ +85℃

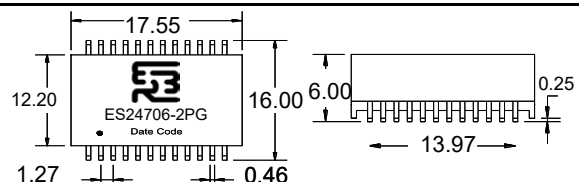


**ES24706-2PG**



10G Base-T Transformer Equivalent to 749052501

Speed 10 Gbps  
 Number of Ports Single  
 Application - LAN PC Card, Card Bus  
 Package Type Package SMD  
 Size Operating 17.6 x 16.6x 6.0mm  
 Temperature 0 ~ +85℃



# 射频被动元件方案商

RF passive component solution provider

**珠海市东恒电子有限公司**

**ZHUHAI EASTEVER ELECTRONIC CO., LTD.**

**地址：珠海市香洲区屏西一路7号宇讯科技园5栋**

**Add: Building 5, Yuxun Science Park, 7 Pingxi 1st Rd, Xiangzhou Dt, Zhuhai**

**Tel#: +86-0756-8898808**

**Mobile: +86-13760523235**

**Http://www.east-ever.com**

**E-mail: karmen@east-ever.com**