



ShenZhen Jintron Technology Co.,Ltd



01. Company profile

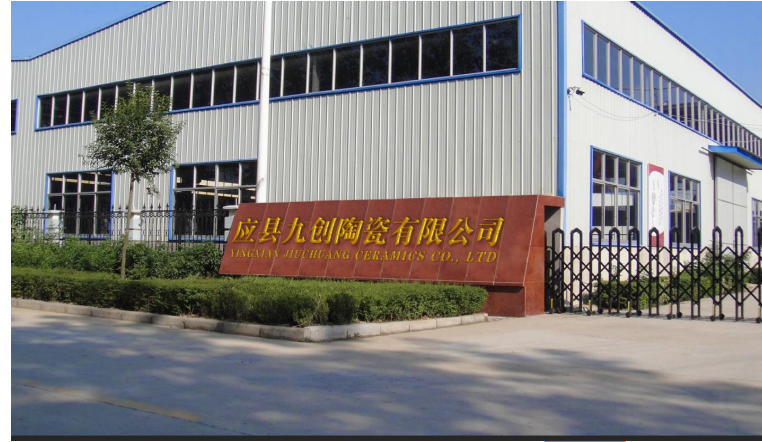
02. Production process

03. Product introduction

04. Market and customers

1

Company Development



Yingxian Jiuchuang Ceramics Co., Ltd was established in 2012. At first it was a factory responsible for production and domestic market.



Shanxi Jinci International Trade Co., Ltd. was established in 2017 and is mainly responsible for overseas markets.



In 2024, Shenzhen JinTron Technology Co., Ltd. was established. It is located in Shenzhen, which is convenient for meeting and communicating with international trading partners.

1

Company Profile



In 2024, Shenzhen JinTron Technology Co., Ltd. was established. It is an international company integrating design, R&D, production and sales. It mainly deals in hotel porcelain, wedding porcelain, etc., and its business varieties include dinner plate and tableware series, knife and fork series, wine glass series, coffee cup series, bowl series, etc. The product materials include bone china, reinforced porcelain, stoneware, new bone china and magnesium porcelain, etc. The products have passed ISO9001, FDA, SGS and other certifications.



① Our advantages



We have our own factory, which can control the cost of raw materials and provide you with competitive prices.



We have a design team that can better meet the personalized customization requirements of customers.



We have our own factory and can conduct comprehensive and strict quality control from raw material procurement, production process to finished product inspection to ensure the production of high-quality bone porcelain products.



We have a great sales team to provide you with the best pre-sales and after-sales service.

② Production process



Raw material handling



Mold making



Roll shaping

② Production process



Bisque



Spraying Glaze

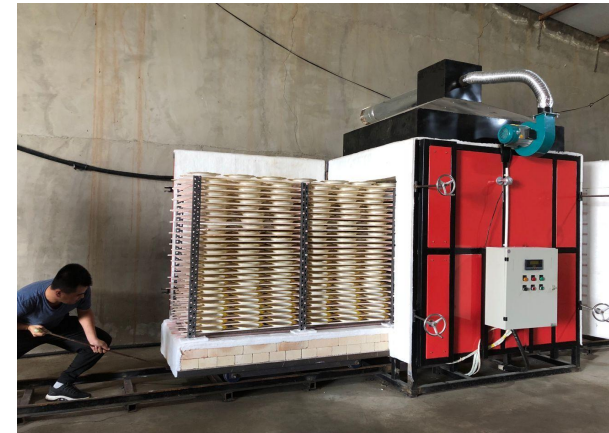


Glaze Firing

② Production process



Ceramic decals

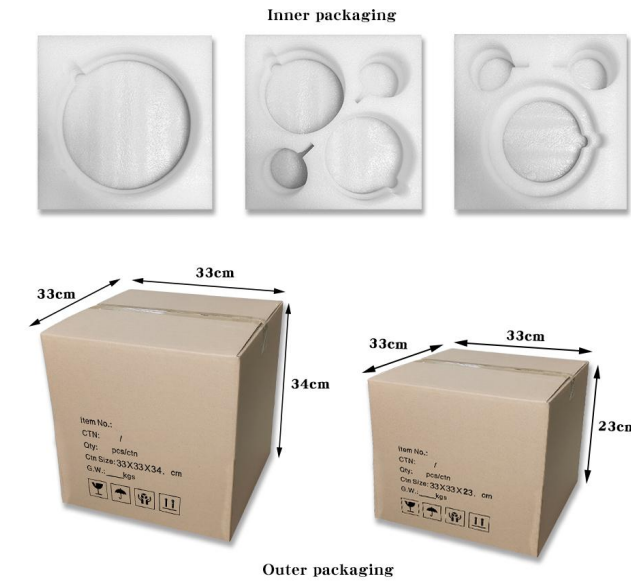


Firing



Product Quality Inspection

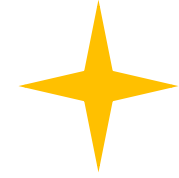
2. About Package



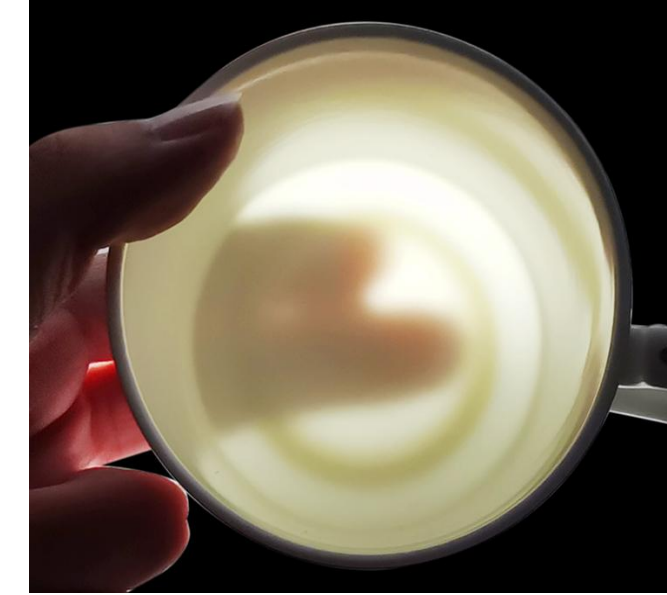
Regarding packaging, we use polystyrene for inner boxes, pearl cotton in the middle of the plate, and pallets for transportation. The integrity rate of our products reaches 99.8%.



③ Product introduction



Bone china is a high-grade porcelain, which is unique in that the raw materials used in its production contain a certain proportion of animal bone meal (usually cow bone meal).



Features:

- ★ **Bone china is lighter than other porcelain and has better light transmittance.**
- ★ **Bone china does not contain lead, cadmium, etc. that are harmful to health, and is a "green ceramic"**

3. Product introduction



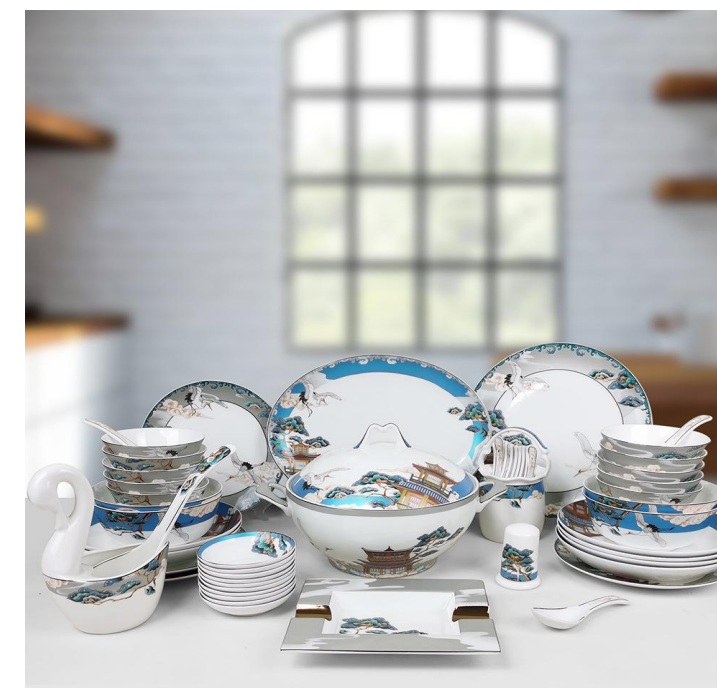
★ Coffee set





③ Product introduction

★ Dinnerware set





③ Product introduction

★ Charger Plate





3. Product introduction

★ Festival Series





③ Product introduction

★ Ceramics whiteware





3. Product introduction

★ Glassware



3. Product introduction

★ cutlery



4

Business Partners





4 Market and customers



Our customers come from all over the world and our products can be shipped to worldwide.



The background features a faded city skyline with several skyscrapers. Overlaid on this are large, abstract orange shapes: a solid orange circle in the top left, a large orange shape in the top right containing a smaller yellow circle and a hatched orange circle, and a hatched orange circle in the bottom left. A solid orange wave-like shape runs along the bottom edge. Two orange circular arrows, one pointing left and one pointing right, are positioned on either side of the central text.

Thank you !

www.jcdinnerware.com