

诚信务实 质量第一 高效服务  
Honest pragmatic, quality first, efficient service



电话: 0086 0531 8289 2258  
WhatsApp: +86 13964179367  
邮箱: sales@rxsteelgroup.com  
网址: www.sdrxsteel.com; www.ruixiangsteel.com  
地址: 中国(山东)自由贸易试验区济南片区—舜泰广场701B

---

Tel: 0086 0531 8289 2258  
WhatsApp: +86 13964179367  
Email: sales@rxsteelgroup.com  
Web: www.sdrxsteel.com; www.ruixiangsteel.com  
ADD.: 701B, Shuntai Plaza 8th building, Jinan Area of the Pilot Free Trade Zone, China.



# 瑞祥钢铁集团

## RUIXIANG STEEL GROUP



OEM&ODM



Spot Sale



Factory Supply



One-stop Service

## 企业形象部分 Corporate Image

- 企业简介 Company Profile
- 企业文化 Corporate Culture
- 企业资质 Enterprise Qualification
- 发展历程 Development History

## 产品画册部分 Product Catalogue

- 碳钢系列 Carbon Steel Series
- 镀锌系列 Galvanized Series
- 不锈钢系列 Stainless Steel
- 型材系列 Sectional Material
- 彩涂系列 Color Coating Series
- 铝材系列 Aluminum Series
- 合金系列 Alloy Series
- 矩形管系列 Rectangular Tube Series
- 其他产品 Other Products
- 铜系列 Copper Series



中国大型钢铁企业，专注钢铁行业20余年，现有10余条生产线，满足客户需求。

China's large iron and steel enterprise that have focused on the iron and steel industry more than 20 years, and now we have more than 10 production lines to meet customer's demand.

# 企业简介

山东瑞祥钢铁集团有限公司，是一家集钢铁新材料产品与光伏产品为一体的厂家，隶属于瑞祥钢铁集团。我们主营业务包含各种建筑用金属制品和新能源领域新材料制品，是国内优秀的能源和建筑行业供货商。我们拥有丰富的生产和出口经验。我们既有自己的生产基地，又有自己专业的出口部门。能全方位的解决客户对钢材产品和光伏产品的采购需求。

目前公司的出口国家已覆盖东南亚地区，中东地区，非洲多国，欧美地区。主要出口产品包含无缝钢管、优质焊管、钢板桩、美标H型钢、英标H型钢、角钢、槽钢、碳钢卷、镀锌卷、彩涂卷，以及屋顶板等。

Shandong Ruixiang Steel Group Co., Ltd. is a manufacturer integrating steel new material products and photovoltaic products, and is affiliated to Ruixiang Steel Group. Our main business includes various metal products for construction and new material products in the field of new energy. We are an excellent supplier of energy and construction industry in China. We have rich experience in production and export. We have both our own production base and our own professional export department. It can comprehensively solve customers' purchasing needs for steel products and photovoltaic products.

At present, the company's export countries have covered Southeast Asia, the Middle East, African countries, Europe and the United States. The main export products include seamless steel pipes, high-quality welded pipes, steel sheet piles, American standard H-beam, British standard H-beam, angle steel, channel steel, carbon steel coils, galvanized coils, color-coated coils, and roof panels.

## 企业文化 CORPORATE CULTURE

### 公司愿景 Company vision

打造全球最具竞争力的高端钢铁材料服务商  
To become the most competitive high-end steel material service provider in the world

### 企业精神 Enterprise spirit

拼搏、超越、创造  
Strive、surpass、create

### 价值观 Values

诚信、共赢、感恩  
Integrity、win-win、gratitude

### 使命 Mission

为社会创造财富、为客户创造价值、为员工创造未来  
Create wealth for society、create value for customers、and create a future for employees



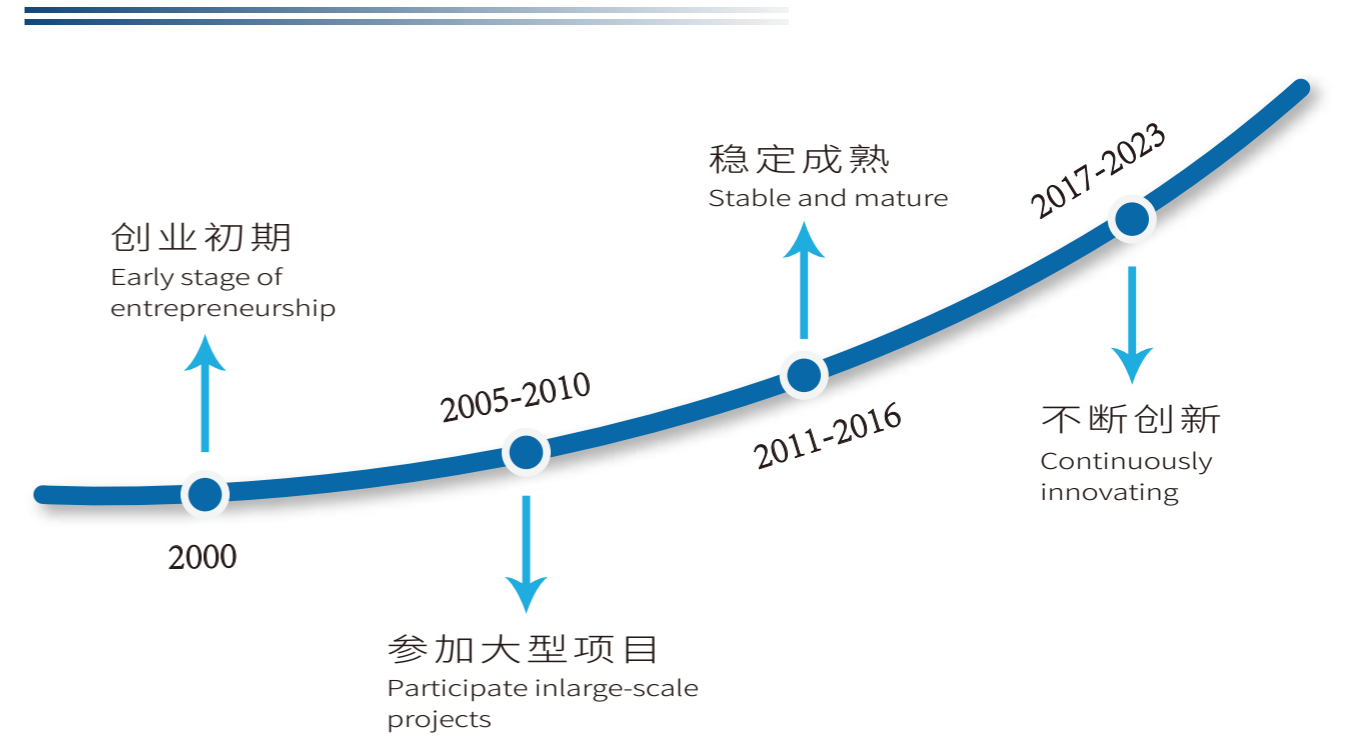
# 企业资质 ENTERPRISE QUALIFICATION



# 发展历程 DEVELOPMENT HISTORY

山东瑞祥钢铁集团有限公司是山东瑞祥控股集团全资控股的公司。自2000年起,就进入中国的钢铁生产与售卖市场,并迅速占领大量份额,自2005年起,先后参与了多起国外重量级项目。例如:博茨瓦纳MORUPULE B 4X150MW燃煤电站项目;菲律宾马利万斯2×300MW燃煤电项目;老挝洪沙3x626MW坑口燃煤电站项目;尼日利亚宗格鲁4X175MW水电站项目;巴基斯坦500kV输变电项目;埃塞俄比亚REPPIE 2X25MW等。

Shandong Ruixiang Steel Group Co., Ltd. is a wholly-owned company of Shandong Ruixiang Holding Group. Since 2000, it has entered China's steel production and sales market, and quickly occupied a large share. Since 2005, it has participated in a number of foreign heavyweight projects. For example, MORUPULE B 4X150MW coal-fired power station project in Botswana; 2×300MW Coal-fired power Project of Malivance, Philippines; Laos Hongsha 3x626MW Pithole Coal-fired Power Station Project; 4 × 175MW Zongeru Hydropower Project in Nigeria; Pakistan 500kV Power Transmission and Transformation Project; Ethiopia REPPIE 2X25MW, etc.





# 碳钢系列

## CARBON STEEL SERIES

碳钢卷

Carbon steel coil

碳钢板

Carbon steel plate

工业管

Industrial tube

焊 管

Pipe welding

无缝管

Seamless tube

圆 钢

Round steel

碳钢带

Carbon steel strip

螺纹钢

Threaded steel

# 碳钢卷 CARBON STEEL COIL

## 产品特性 Product characteristics

- 耐腐蚀性Corrosion resistance
- 高温抗氧化High temperature resistance
- 热稳定性Thermal stability
- 可加工性Machinability



## 应用领域 Application area

- 桥梁、锅炉、造船、装甲、汽车、屋面、电工
- Bridges, boilers, shipbuilding, armor, automobiles, roofing, electricians

## 标准: Standards

- ASTM A53、ASTM A573、ASTM A283
- GB-T、700-2006 GB-T、711-2008
- JIS G3101、JIS G3131、JIS G3106

## 宽度: Width

- 1.5mm-3mm或根据需要
- 1.5mm-3mm or as required

## 厚度: Thickness

- 0.1mm-300mm或根据需要
- 0.1mm-300mm or as required

## 表面处理: Surface treatment

- 黑色、镀锌、涂层、涂油、喷漆等
- Black, Galvanized, Coated, Oiled, Painted, etc.

## 材质: Material Quality

- Q195、Q215、Q235B、Q345B、S235JR、S355JR、SS400 etc



# 碳钢板 CARBON STEEL PLATE

## 产品特性 Product characteristics

- 耐腐蚀性Corrosion resistance
- 高温抗氧化High temperature resistance
- 热稳定性Thermal stability
- 可加工性Machinability



## 应用领域 Application area

- 桥梁、锅炉、造船、装甲、汽车、屋面、电工
- Bridges, boilers, shipbuilding, armor, automobiles, roofing, electricians

## 标准: Standards

- ASTM A53、ASTM A573、ASTM A283
- GB-T、700-2006 GB-T、711-2008
- JIS G3101、JIS G3131、JIS G3106

## 宽度: Width

- 1.5mm-3mm或根据需要
- 1.5mm-3mm or as required

## 厚度: Thickness

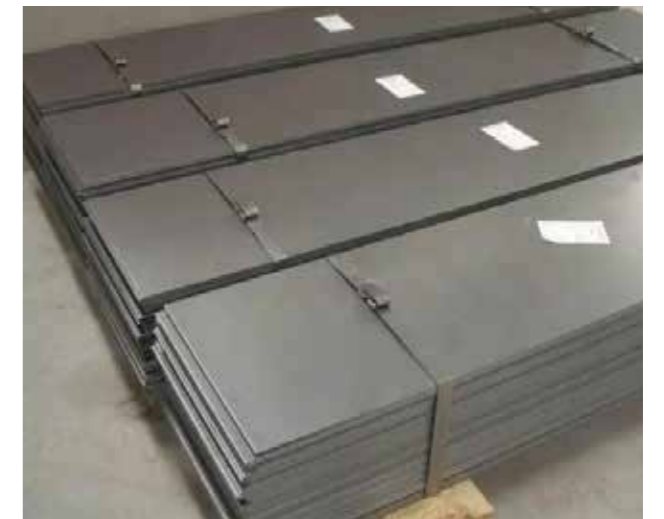
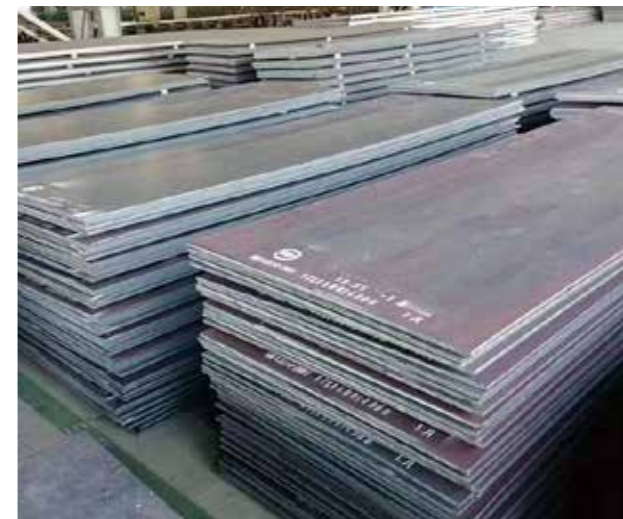
- 0.1mm-300mm或根据需要
- 0.1mm-300mm or as required

## 表面处理: Surface treatment

- 黑色、镀锌、涂层、涂油、喷漆等
- Black, galvanized, Coated, Oiled, Painted, etc.

## 材质: Material Quality

- Q195、Q215、Q235B、Q345B、S235JR、S355JR、SS400 etc



# 工业管 INDUSTRIAL TUBE

## 产品特性 Product characteristics

耐腐蚀性Corrosion resistance  
高温抗氧化性High temperature resistance  
热稳定性Thermal stability  
可加工性Machinability



## 应用领域 Application area

桥梁、锅炉、造船、装甲、汽车、屋面、电工  
Bridges, boilers, shipbuilding, armor, automobiles, roofing, electricians

### 标准: Standards

GB/T3091-2001、BS 1387-1985、  
DIN EN 10025、EN10219、JISG3444-2004  
ASTM A53 SCH40、80STD、BS-EN10255-2004

### 外径: Outer diameter

219mm-3620mm或根据需要  
219mm-3620mm or as required

### 壁厚: Wall thickness

0.6MM-20MM或根据需要  
0.6 mm m-20 mm or as required

### 长度: Length

1m、4m、6m、8m、12m

### 材质: Material Quality

Q195、Q215、Q235、Q345、S235JR、  
GRB-D、STK500



# 焊管 PIPE WELDING

## 产品特性 Product characteristics

耐腐蚀性Corrosion resistance  
高温抗氧化性High temperature resistance  
热稳定性Thermal stability  
可加工性Machinability



## 应用领域 Application area

桥梁、锅炉、造船、装甲、汽车、屋面、电工  
Bridges, boilers, shipbuilding, armor, automobiles, roofing, electricians

### 标准: Standards

GB/T3091-2001、BS 1387-1985、  
DIN EN 10025、EN10219、JISG3444-2004  
ASTM A53、SCH40、80STD、BS-EN10255-2004

### 外径: Outer diameter

219mm-3620mm或根据需要  
219mm-3620mm or as required

### 壁厚: Wall thickness

0.6MM-20MM或根据需要  
0.6 mm m-20 mm or as required

### 长度: Length

1m、4m、6m、8m、12m

### 材质: Material Quality

Q195、Q215、Q235、Q345、S235JR、  
GRB-D、STK500



# 无缝管 SEAMLESS TUBE

## 产品特性 Product characteristics

- 耐腐蚀性Corrosion resistance
- 高温抗氧化High temperature resistance
- 热稳定性Thermal stability
- 可加工性Machinability



## 应用领域 Application area

桥梁、锅炉、造船、装甲、汽车、屋面、电工  
Bridges, boilers, shipbuilding, armor, automobiles, roofing, electricians

### 标准: Standards

API5L GrB/ASTM A106、GrB/ASTM A106  
ASTM A106、ASTM A53、API5L B ASTM A179  
ASTM A210 ANSI B36 10

### 材质: Material Quality

A53(AB)A105(AB)0345、16Mn、10#、20#  
45# S235JR、S355JR、ASTMA252、Gr2 Gr3  
ST37 ST42 ST52 GrB X42 X46 X52 X5 X6 X65 X70 etc

### 壁厚: Wall thickness

13.7mm-1219.2mm

### 外径: Outer diameter

13.7mm-1219.2mm  
219mm-3620mm or as required

### 表面处理: Surface treatment

光面/黑色涂漆/涂油  
Gloss/Black Paint/Oil



# 圆钢 ROUND STEEL

## 产品特性 Product characteristics

- 耐腐蚀性Corrosion resistance
- 高温抗氧化High temperature resistance
- 热稳定性Thermal stability
- 可加工性Machinability



## 应用领域 Application area

桥梁、锅炉、造船、装甲、汽车、屋面、电工  
Bridges, boilers, shipbuilding, armor, automobiles, roofing, electricians

### 标准: Standards

ASTM A53/ASTM A573/ASTM A283/  
GB-T/700-2006 GB-T/711-2008  
JIS G3101/JIS G3131/JIS G3106

### 材质: Material Quality

Q195、Q215、Q235B、Q345B  
S235JR、S355JR、SS400 etc

### 长度: Length

2m 5m 6m 或根据长度需要  
2m 5m 6m or as required

### 直径: Diameter

0.1mm-500mm或根据需求  
0.1mm-500mm or as required

### 表面处理: Surface treatment

光面/黑色涂漆/涂油  
Gloss/Black Paint/Oil



# 碳钢带 CARBON STEEL STRIP

## 产品特性 Product characteristics

- 耐腐蚀性Corrosion resistance
- 高温抗氧化High temperature resistance
- 热稳定性Thermal stability
- 可加工性Machinability



## 应用领域 Application area

- 桥梁、锅炉、造船、装甲、汽车、屋面、电工
- Bridges, boilers, shipbuilding, armor, automobiles, roofing, electricians

## 标准: Standards

- ASTM A53/ASTM A573/ASTM A283/
- GB-T/700-2006 GB-T/711-2008
- JIS G3101/JIS G3131/JIS G3106

## 材质: Material Quality

- Q195、Q215、Q235B、Q345B、
- S235JR、S355JR、SS400 etc

## 厚度: Thickness

- 0.1mm-300mm或根据需要
- 0.1mm-300mm or as required

## 长宽度: Length and width

- 3mm-2000mm或根据需要
- 3mm-2000mm or as required

## 表面处理: Surface treatment

- 光面/黑色涂漆/涂油
- Gloss/Black Paint/Oil



# 螺纹钢 REBAR STEEL

## 产品特性 Product characteristics

- 和混凝土有较大的粘结能力，因而能更好地承受外力的作用。
- It has a greater bonding capacity with concrete, so it can better withstand external forces.



## 应用领域 Application area

- 房屋、桥梁、造船、道路、铁路、隧道、水坝
- Houses, bridges, shipbuilding, roads, railways, tunnels, dams

## 标准: Standards

- GB 1499.2-2007, ASTM A615/A615M-2016 ASTM、
- A706/706M-2016, GB1499.1~GB1499.3,
- JIS G3112—87 (98), JISG3191—66 (94)

## 材质: Material Quality

- HRB400/HRB500 HRB400E/HRB500E
- 460B,B500B,B500C SD400/SD500/SD600
- Gr40,Gr60,Gr75,Gr80 500N B500B
- Gr40,Gr60,Gr75,Gr80 CA50

## 直径: Diameter

- 6mm-50mm 或根据长度需要
- 6mm-50mm or as required

## 长度: Length

- 6m-12m 或根据长度需要
- 6m-12amm or as required

## 表面处理: Surface treatment

- 光面/黑色涂漆/涂油
- Gloss/Black Paint/Oil





# 镀锌系列

## GALVANIZED SERIES

镀锌卷

Galvanized coil

镀锌板

Galvanized plate

镀锌管

Galvanized pipe

镀锌圆钢

Galvanized round steel

镀锌钢带

Galvanized Steel Strip

屋顶板

Roofing sheet

# 镀锌钢带 GALVANIZED STEEL STRIP

## 产品特性 Product characteristics

耐腐蚀性Corrosion resistance  
高温抗氧性High temperature resistance  
热稳定性Thermal stability  
可加工性Machinability



## 应用领域 Application area

建筑/机械/煤矿/化工/电力  
CONSTRUCTION/MACHINERY/COAL/chemical/electricity

## 标准: Standards

JIS G3302 ASTM A653M EN10327 DIN17162  
EN 10142 EN10147 EN10292 JIS G3302

## 等级: Rank

DX51D+Z DX52D+Z DX53D+Z DX54D+Z  
S220GD+Z DX51D+Z/SGCC/A653 etc

## 锌层: Zinc coating

40-600g/m<sup>2</sup>

## 厚度: Thickness

0.1mm-300mm或根据需要  
0.1mm-300mm or as required

## 宽度: width

600mm-1250mm或根据需要  
600mm-1250mm or as required

## 表面处理: Surface treatment

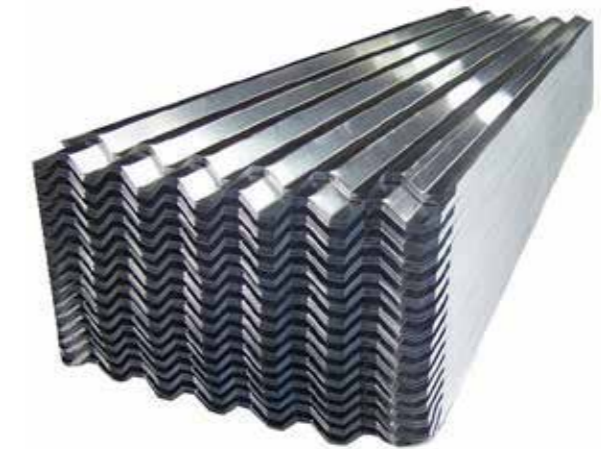
镀锌、PVC 黑色和彩绘 透明油 防锈油  
Galvanized, PVC black and painted,  
transparent oil, antirust oil



# 屋顶板 ROOFING SHEET

## 产品特性 Product characteristics

耐腐蚀性Corrosion resistance  
高温抗氧性High temperature resistance  
热稳定性Thermal stability  
可加工性Machinability



## 应用领域 Application area

建筑/机械/煤矿/化工/电力  
CONSTRUCTION/MACHINERY/COAL/chemical/electricity

## 标准: Standards

GB/T 2518-2008 GB/T 2518-2004;  
ASTM; DIN; JIS; BS

## 等级: Rank

DX51D+Z DX52D+Z DX53D+Z DX54D+Z  
S220GD+Z DX51D+Z/SGCC/A653 etc

## 锌层: Zinc coating

40-600g/m<sup>2</sup>

## 厚度: Thickness

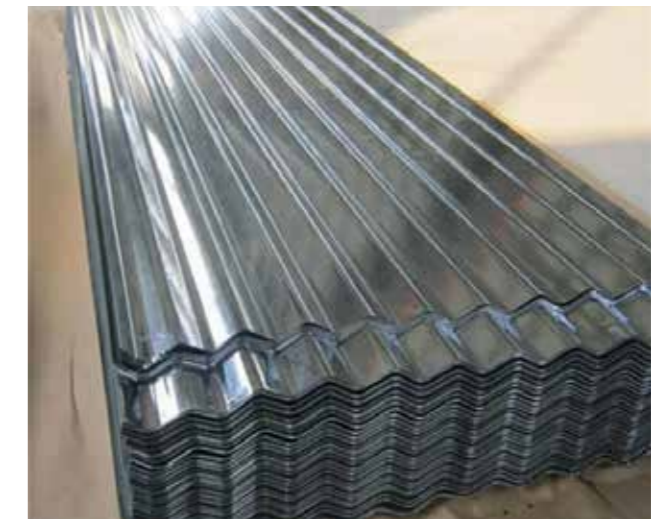
0.4mm-2mm 或根据需要  
0.4mm-2mm or as required

## 长度: Length

1m-6m 或根据需要  
1m-6m or as required

## 宽度: Width

500mm-1500mm 或根据需要  
500mm-1500mm or as required



# 镀锌管 GALVANIZED PIPE

## 产品特性 Product characteristics

- 耐腐蚀性Corrosion resistance
- 高温抗氧性High temperature resistance
- 热稳定性Thermal stability
- 可加工性Machinability



## 应用领域 Application area

- 建筑/机械/煤矿/化工/电力
- CONSTRUCTION/MACHINERY/COAL/chemical/electricity

## 标准: Standards

- API 5L,ASTM A53-2007,ASTM A671-2006
- ASTM A252-1998,ASTM A450-1996
- ASME B36,10M-2004,ASTM A523-1996
- BS EN10296,BS 6323,BS 6363

## 材质: Material Quality

- 10#,20#,45#,16Mn,A53(A,B)Q195/Q235/Q345,
- Q195,Q215 ST37 ST42 ST37-2 ST35-4 ST52-4 ST35

## 壁厚: Wall thickness

- 1mm-150mm(SCH10-XXS)或根据需要
- 1mm-150mm(SCH10-XXS)or as required

## 外径: Outer diameter

- 6mm-2500mm(3/8"-100")或根据需要
- 6mm-2500mm(3/8"-100")or as required

## 锌层: Zinc coating

- 40-600g/m<sup>2</sup>



# 镀锌圆钢 Galvanized round steel

## 产品特性 Product characteristics

- 耐腐蚀性Corrosion resistance
- 高温抗氧性High temperature resistance
- 热稳定性Thermal stability
- 可加工性Machinability



## 应用领域 Application area

- 建筑/机械/煤矿/化工/电力
- CONSTRUCTION/MACHINERY/COAL/chemical/electricity

## 标准: Standards

- API 5L,ASTM A53-2007,ASTM A671-2006
- ASTM A252-1998,ASTM A450-1996
- ASME B36,10M-2004,ASTM A523-1996
- BS EN10296,BS 6323,BS 6363

## 材质: Material Quality

- 10#,20#,45#,16Mn,A53(A,B)Q195/Q235/Q345,
- Q195,Q215 ST37 ST42 ST37-2 ST35-4 ST52-4 ST35

## 长度: Length

- 2m 5m 6m 或根据长度需要
- 2m 5m 6m or as required

## 直径: Diameter

- 0.1mm-500mm或根据需要
- 0.1mm-500mm or as required

## 锌层: Zinc coating

- 40-600g/m<sup>2</sup>



# 镀锌卷 GALVANIZED COIL

## 产品特性 Product characteristics

- 耐腐蚀性Corrosion resistance
- 高温抗氧性High temperature resistance
- 热稳定性Thermal stability
- 可加工性Machinability



## 应用领域 Application area

- 桥梁、锅炉、造船、装甲、汽车、屋面、电工
- Bridges, boilers, shipbuilding, armor, automobiles, roofing, electricians

## 标准: Standards

JIS G3302 ASTM A653M EN10327 DIN17162  
EN 10142 EN10147 EN10292 JIS G3302

## 锌层: Zinc coating

40-600g/m<sup>2</sup>

## 等级: Rank

DX51D+Z DX52D+Z DX53D+Z DX54D+Z  
S220GD+Z DX51D+Z/SGCC/A653 etc

## 厚度: Thickness

0.20mm-6.0mm或根据需要  
0.20mm-6.0mm or as required

## 表面处理: Surface treatment

镀锌、PVC黑色和彩绘 透明油 防锈油  
Galvanized, PVC black and painted, transparent  
oil, antirust oil

## 宽度: Width

600mm-1250mm或根据需要  
600mm-1250mm or as required



# 镀锌板 GALVANIZED PLATE

## 产品特性 Product characteristics

- 耐腐蚀性Corrosion resistance
- 高温抗氧性High temperature resistance
- 热稳定性Thermal stability
- 可加工性Machinability



## 应用领域 Application area

- 桥梁、锅炉、造船、装甲、汽车、屋面、电工
- Bridges, boilers, shipbuilding, armor, automobiles, roofing, electricians

## 标准: Standards

JIS G3302 ASTM A653M EN10327 DIN17162  
EN 10142 EN10147 EN10292 JIS G3302

## 锌层: Zinc coating

40-600g/m<sup>2</sup>

## 等级: Rank

DX51D+Z DX52D+Z DX53D+Z DX54D+Z  
S220GD+Z DX51D+Z/SGCC/A653 etc

## 厚度: Thickness

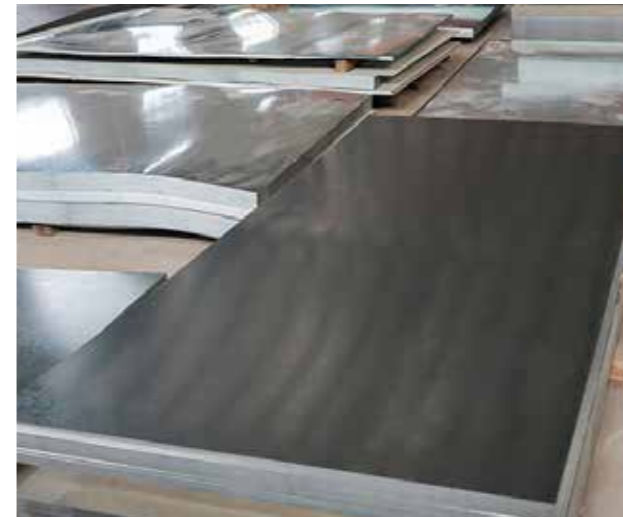
0.20mm-6.0mm或根据需要  
0.20mm-6.0mm or as required

## 表面处理: Surface treatment

镀锌、PVC黑色和彩绘 透明油 防锈油  
Galvanized, PVC black and painted, transparent  
oil, antirust oil

## 宽度: Width

600mm-1250mm或根据需要  
600mm-1250mm or as required





# 不锈钢系列

## STAINLESS STEEL SERIES

不锈钢卷

Stainless steel coil

不锈钢板

Stainless steel plate

不锈钢管

Stainless steel pipe

不锈钢棒

Stainless steel rod

不锈钢带

Stainless steel strip

不锈钢扁钢

Stainless steel flat

# 不锈钢卷 STAINLESS STEEL ROLL

## 产品特性 Product characteristics

耐腐蚀性Corrosion resistance  
高温抗氧化High temperature resistance  
热稳定性Thermal stability  
可加工性Machinability



## 应用领域 Application area

建筑 厨具 餐具 车辆 家用电器  
Construction, kitchenware, tableware, vehicles, household appliances

## 标准: Standards

AISI ASTM DIN JISGBJIS SUS EN

## 长宽度: Length and width

3mm-2000mm或根据需要  
3mm-2000mm or as required

## 表面处理: Surface treatment

NO1,2B,NO4.8K镜面或根据客户需求  
NO1 2B NO 4.8K Mirror or according to customer requirements

## 厚度: Thickness

0.1mm-300mm或根据需要  
0.1mm-300mm or as required

## 材质: Material Quality

201,202,304,304L,316,316L,317L,347H,3  
10s,309S,430,904L,2205,2507



# 不锈钢板 STAINLESS STEEL PLATE

## 产品特性 Product characteristics

耐腐蚀性Corrosion resistance  
高温抗氧化High temperature resistance  
热稳定性Thermal stability  
可加工性Machinability



## 应用领域 Application area

桥梁、锅炉、造船、装甲、汽车、屋面、电工  
Bridges, boilers, shipbuilding, armor, automobiles, roofing, electricians

## 标准: Standards

AISI ASTM DIN JISGBJIS SUS EN

## 长宽度: Length and width

3mm-2000mm或根据需要  
3mm-2000mm or as required

## 表面处理: Surface treatment

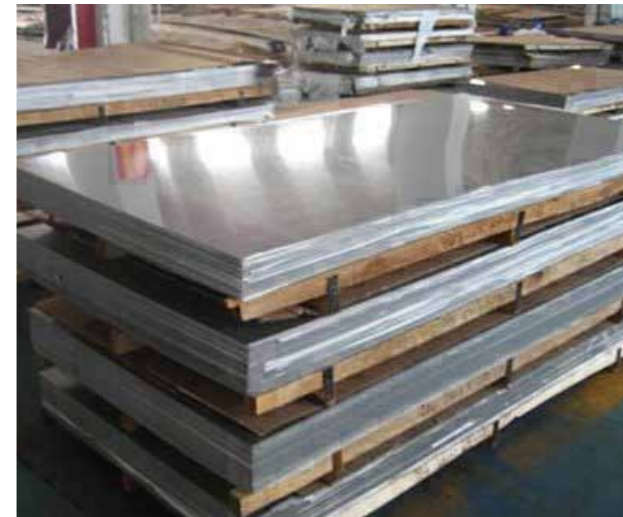
NO1,2B,NO4.8K镜面或根据客户需求  
NO1 2B NO 4.8K Mirror or according to customer requirements

## 厚度: Thickness

0.1mm-300mm或根据需要  
0.1mm-300mm or as required

## 材质: Material Quality

201,202,304,304L,316,316L,317L,347H,3  
10s,309S,430,904L,2205,2507



# 不锈钢管 STAINLESS STEEL PIPE

## 产品特性 Product characteristics

- 精度高 High precision
- 高温抗氧化性 high temperature oxidation resistance
- 硬度低 low hardness
- 可加工性 machinability



## 应用领域 Application area

石油化工 医疗 食品 轻工 机械仪表  
Petroleum, chemical, medical, food, light industry, mechanical instrumentation

### 标准: Standards

AISI ASTM DIN JISGBJIS SUS EN

### 壁厚: Wall thickness

1mm-150mm (SCH10-XXS)

### 外径: Outer diameter

6mm-2500mm (3/8"-100")

### 表面处理: Surface treatment

酸洗面漆, NO1, 2B, 抛光, Hairline, NO4, 镜面  
Acid wash finish, NO1, 2B, polishing, Hairline, NO4, mirror

### 材质: Material Quality

201, 202, 304, 304L, 316, 316L, 317L, 347H, 310s, 309S, 430, 904L, 2205, 2507



# 不锈钢棒 STAINLESS STEEL ROD

## 产品特性 Product characteristics

- 耐腐蚀性 Corrosion resistance
- 高温抗氧化性 High temperature resistance
- 高耐磨性 High wear resistance
- 可加工性 Machinability



## 应用领域 Application area

五金厨具 造船 石化 机械 医疗 食品  
Hardware kitchenware, shipbuilding, petrochemical, machinery, medical, food

### 标准: Standards

AISI ASTM DIN JISGBJIS SUS EN

### 直径: Diameter

0.1mm-500mm 或根据需要  
0.1mm-500mm or as required

### 材质: Material Quality

201, 202, 304, 304L, 316, 316L, 317L, 347H, 310s, 09S, 430, 904L, 2205, 2507

### 长度: Length

2m 5m 6m 或根据长度需要  
2m 5m 6m or as required

### 表面处理: Surface treatment

酸洗面漆, NO1, 2B, 抛光, Hairline, NO4, 镜面  
Acid wash finish, NO1, 2B, polishing, Hairline, NO4, mirror



# 不锈钢带 STAINLESS STEEL STRIP

## 产品特性 Product characteristics

生产流程：酸洗→常温轧制→工艺  
润滑→退火→平整→精切→包装  
Pickling, room temperature rolling, process lubrication,  
annealing, leveling, fine cutting, packaging



## 应用领域 Application area

桥梁、锅炉、造船、装甲、汽车、屋面、电工  
Bridges, boilers, shipbuilding, armor, automobiles, roofing, electricians

## 标准：Standards

AISI ASTM DIN JISGBJIS SUS EN

## 长宽度：Length and width

3mm-2000mm或根据需要  
3mm-2000mm or as required

## 表面处理：Surface treatment

NO1,2B,NO4.8K镜面或根据客户需求  
NO1 2B NO 4.8K Mirror or according to customer requirements

## 厚度：Thickness

0.1mm-300mm或根据需要  
0.1mm-300mm or as required

## 材质：Material Quality

201,202,304,304L,316,316L,317L,347H,3  
10s,309S,430,904L,2205,2507



# 不锈钢扁钢 STAINLESS STEEL FLAT

## 产品特性 Product characteristics

耐腐蚀性Corrosion resistance  
高温抗氧化High temperature resistance  
高耐磨性High wear resistance  
可加工性Machinability



## 应用领域 Application area

房梁桥梁输电塔船舶工业炉  
House, bridge, transmission tower, ship, industrial furnace

## 标准：Standards

AISI ASTM DIN JISGBJIS SUS EN

## 直径：Diameter

0.1mm-500mm或根据需要  
0.1mm-500mm or as required

## 材质：Material Quality

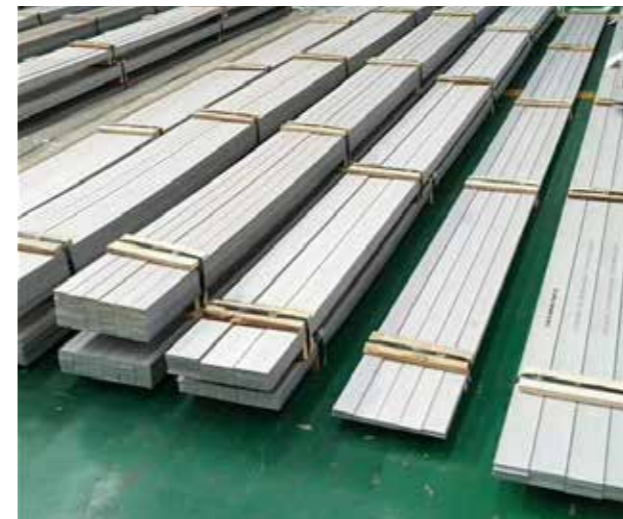
201,202,304,304L,316,316L,317L,347H,310s,  
309S,430,904L,2205,2507

## 长度：Length

2m 5m 6m 或根据长度需要  
2m 5m 6m or as required

## 表面处理：Surface treatment

酸洗面漆,NO1,2B,抛光,Hairline,NO4,镜面  
Acid wash finish, NO1,2B, polishing, Hairline,  
NO4, mirror





# 型材系列

SECTIONAL MATERIAL

钢板桩

Steel sheet pile

角 钢

Angle Steel

槽 钢

Channel Steel

工字钢

I-beam

不锈钢槽钢

Stainless steel channel

不锈钢角钢

Stainless steel angle

# 钢板桩 STEEL SHEET PILE

## 产品特性 Product characteristics

耐腐蚀性Corrosion resistance  
高温抗氧性High temperature resistance  
热稳定性Thermal stability  
可加工性Machinability

## 应用领域 Application area

工厂、道路、水路工程、桥梁、建筑  
Factories, roads, waterways: Bridges, buildings

## 标准: Standards

AISI, GB/T20933, JIS A 5528, JIS A 5523, EN10248

## 表面处理: Surface treatment

黑色、镀锌、涂层、涂油、喷漆等  
Black, galvanized, Coated, oiled, painted, etc.



## 长度: Length

6m、12m、或根据长度需要  
6m、12m or as required

## 材质: Material Quality

S235、S330、S355、S390、S430、SY295、SY390、SYW295、SYW390、Q235、Q345



# 角钢 ANGLE STEEL

## 产品特性 Product characteristics

耐腐蚀性Corrosion resistance  
高温抗氧性High temperature resistance  
热稳定性Thermal stability  
可加工性Machinability

## 应用领域 Application area

房梁 桥梁 输电塔 起重运输机械  
Buildings, bridges, power transmission towers, lifting and conveying machinery

## 标准: Standards

AISI ASTM DIN JISGBJIS SUS EN

## 材质: Material Quality

Q195、Q235、10#、20#、35#、45#、Q215、Q235、304、316、20Cr、40Cr、20CrMo、35CrMo、42CrMo、40CrNiMo、GCr15、65Mn、50Mn、50Cr、3Cr2W8V、20CrMnTi、5CrMnMo

## 厚度: Thickness

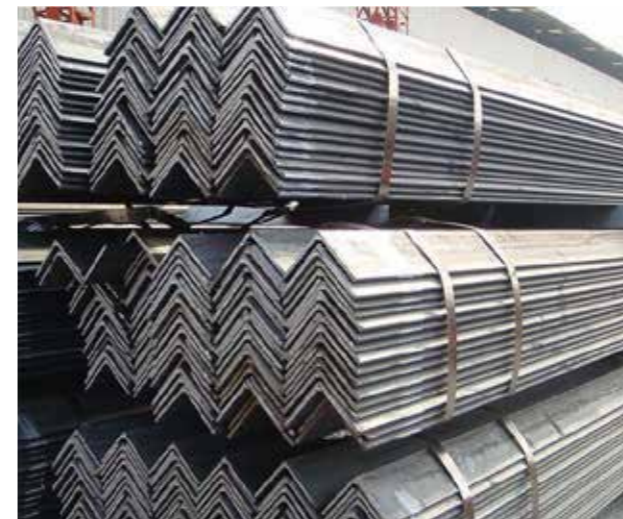
3mm-24mm或根据需要  
3mm-24mm or as required

## 表面处理: Surface treatment

黑色、镀锌、涂层、涂油、喷漆等  
Black, galvanized, Coated, oiled, painted, etc.

## 长度: Length

1m-12m 或根据长度需要  
1m-12m or as required



# 槽钢 CHANNEL STEEL

## 产品特性 Product characteristics

- 耐腐蚀性Corrosion resistance
- 高温抗氧性High temperature resistance
- 热稳定性Thermal stability
- 可加工性Machinability



## 应用领域 Application area

建筑结构、幕墙工程、机械设备和车辆制造  
Building structure, curtain wall engineering, machinery and equipment, vehicle manufacturing

### 长度: Length

1m-12m或根据长度需要  
1m-12m or as required

### 材质: Material Quality

Q235、Q345、SS400、ST37-2、ST52  
Q420、Q460、S235JR、S275J

### 标准: Standards

AISI、ASTM、DIN、JIS、GB、EN

### 厚度: Thickness

4mm-35mm或根据长度需要  
4mm-35mm or as required

### 表面处理: Surface treatment

黑色、镀锌、涂层、涂油、喷漆等  
Black, galvanized, Coated, oiled, painted, etc.



# 工字钢 I-BEAM

## 产品特性 Product characteristics

- 耐腐蚀性Corrosion resistance
- 高温抗氧性High temperature resistance
- 热稳定性Thermal stability
- 可加工性Machinability



## 应用领域 Application area

工程、磨坊、桥梁、高速公路  
Engineering, Mills, bridges, highways

### 标准: Standards

国标、GB/T11263-2017 BS

### 材质: Material Quality

Q235b Q345b A36

### 表面处理: Surface treatment

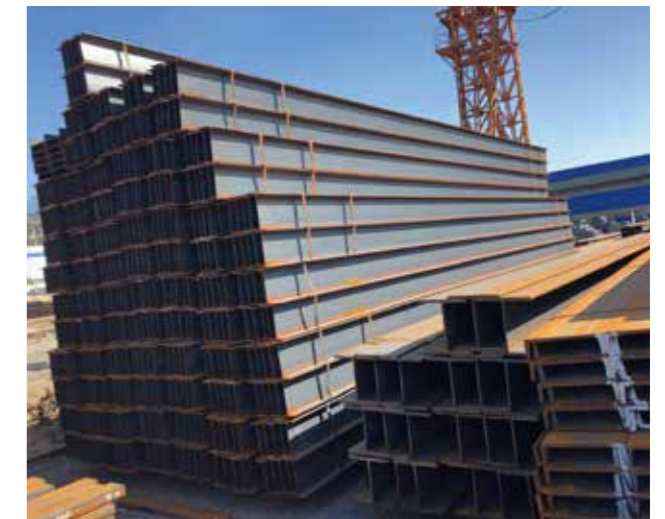
黑色、镀锌、涂层、涂油、喷漆等  
Black, galvanized, Coated, oiled, painted, etc.

### 厚度: Thickness

6mm-28mm或根据长度需要  
6 mm m-28 mm or as required

### 长度: Length

6-12m 或根据长度需要  
6-12m or as required



# 不锈钢槽钢 STAINLESS STEEL CHANNEL

## 产品特性 Product characteristics

- 耐腐蚀性Corrosion resistance
- 高温抗氧化High temperature resistance
- 热稳定性Thermal stability
- 可加工性Machinability

## 应用领域 Application area

建筑结构 车辆制造和其他工业结构  
Building construction, vehicle manufacturing and other industrial structures



## 标准: Standards

AISI ASTM DIN JISGBJIS SUS EN

## 表面处理: Surface treatment

黑色, 去皮, 抛光, 亮光, 发纹等  
Black, peeled, polished, shiny, hairline, etc.

## 长度: Length

2m 5m 6m 或根据长度需要  
2m 5m 6m or as required

## 尺寸: Dimensions

1-150 (SCH10-XXS)

## 壁厚: Wall thickness

0.6MM-20MM或根据需要  
0.6 mm m-20 mm or as required

## 材质: Material Quality

201.202.301.302.303.304.304L.304H.310S.  
316.316L.317L.321.310S 309S.410.410S.420.  
430.431.440A.904L.ETC.



# 不锈钢角钢 STAINLESS STEEL ANGLE

## 产品特性 Product characteristics

- 耐腐蚀性Corrosion resistance
- 高温抗氧化High temperature resistance
- 热稳定性Thermal stability
- 可加工性Machinability

## 应用领域 Application area

房梁 桥梁 输电塔 起重运输机械  
Buildings, bridges, power transmission towers, lifting and conveying machinery



## 标准: Standards

AISI ASTM DIN JISGBJIS SUS EN

## 长度: Length

2m 5m 6m 或根据长度需要  
2m 5m 6m or as required

## 表面处理: Surface treatment

黑色, 去皮, 抛光, 亮光, 发纹等  
Black, peeled, polished, shiny, hairline, etc.

## 尺寸: Dimensions

1-150 (SCH10-XXS)

## 壁厚: Wall thickness

0.6mm-20mm或根据需要  
0.6 mm m-20 mm or as required

## 材质: Material Quality

201.202.301.302.303.304.304L.304H.310S.  
316.316L.317L.321.310S 309S.410.410S.420.  
430.431.440A.904L.ETC.





# 彩涂系列

COLOR COATING SERIES

彩涂卷 Color coating coil

彩涂屋顶板 Color coating roofing plate

# 彩涂卷 COLOUR-COATED ROLL

## 产品特性 Product characteristics

- 耐腐蚀性Corrosion resistance
- 高温抗氧化High temperature resistance
- 高耐磨性High wear resistance
- 可加工性Machinability



## 应用领域 Application area

- 房梁 桥梁 输电塔 船舶 工业炉
- House, bridge, transmission tower, ship, industrial furnace

## 标准: Standards

ASTM,DIN,JIS,BS,GB/T

## 颜色: Color

标准颜色: 红, 蓝, 白, 灰

特殊颜色: 根据RAL颜色

Standard Color: red, blue, White, Gray

Special Colors: based on Ral colors

## 锌层: Zinc coating

30-275g/m<sup>2</sup>

## 宽度: Width

600mm-1500mm或根据需要

600mm-1500mm or as required

## 厚度: Thickness

0.12mm-6.00mm或根据需要

0.12mm-6.00mm or as required

## 材质: Material Quality

Dx51D,Dx52D,Dx53D,Dx54D,S250GD,

S350GD,S550GD



# 彩涂屋顶板 ROOFING SHEET

## 产品特性 Product characteristics

- 耐腐蚀性Corrosion resistance
- 高温抗氧化High temperature resistance
- 热稳定性Thermal stability
- 可加工性Machinability



## 应用领域 Application area

- 建筑结构 车辆制造和其他工业结构
- Building construction, vehicle manufacturing and other industrial structures

## 标准: Standards

ASTM,DIN,JIS,BS,GB/T

## 颜色: Color

标准颜色: 红, 蓝, 白, 灰

特殊颜色: 根据RAL颜色

Standard Color: red, blue, White, Gray

Special Colors: based on Ral colors

## 锌层: Zinc coating

30-275g/m<sup>2</sup>

## 宽度: Width

600mm-1500mm或根据需要

600mm-1500mm or as required

## 厚度: Thickness

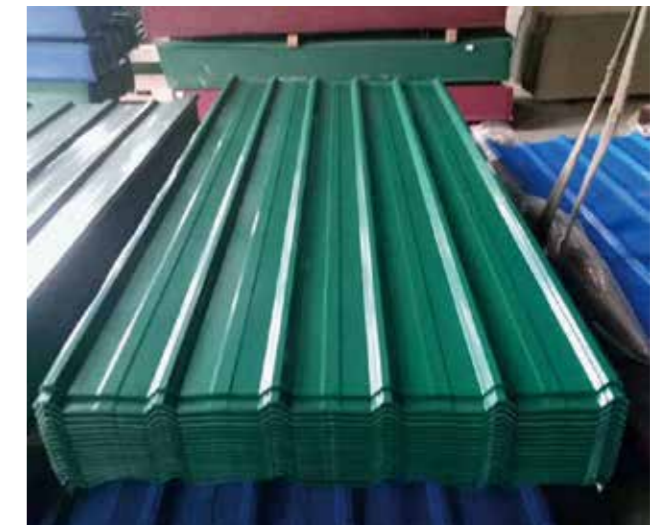
0.12mm-6.00mm或根据需要

0.12mm-6.00mm or as required

## 材质: Material Quality

Dx51D,Dx52D,Dx53D,Dx54D,S250GD,

S350GD,S550GD



# 铝材系列

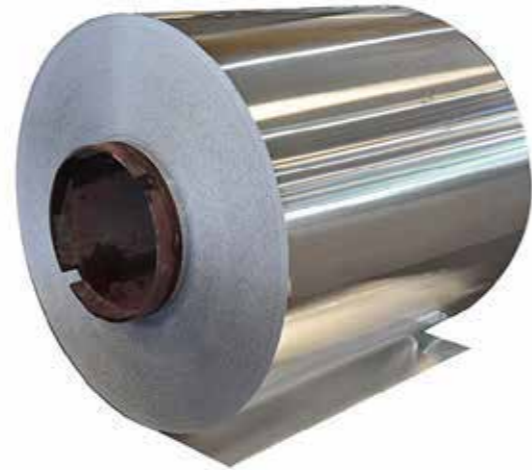
## ALUMINUM SERIES

铝	卷	Aluminum Coil
铝	板	Aluminum Plate
铝	管	Aluminum Pipe
铝	棒	Aluminum Bar
铝	排	Aluminum ingot
镀铝	卷	Aluminum coated coil

# 铝卷 ALUMINUM COIL

## 产品特性 Product characteristics

- 耐腐蚀性Corrosion resistant
- 高温抗氧化High temperature antioxidant
- 热稳定性Thermal stable
- 可加工性Machinable



## 应用领域 Application area

建筑外观/室内装潢/天花板/墙面/家具/橱柜/电梯  
Architectural exterior / upholstery / ceiling / wall / furniture / cabinet / elevator

### 标准: Standards

ASTM B209 JIS H4000-2006 GB/T 3190-2008  
GB/T 3880-2006 etc

### 材质: Material Quality

1050、1060、1070、1100、1200、1235、3003、  
3004、3005、3105、3A21、5005、5052、5083、  
5154、5182、5251、5754、6061、6063、6082 etc.

### 宽度: Width

20mm-1550mm或根据需要  
20mm-1550mm or as required

### 厚度: Thickness

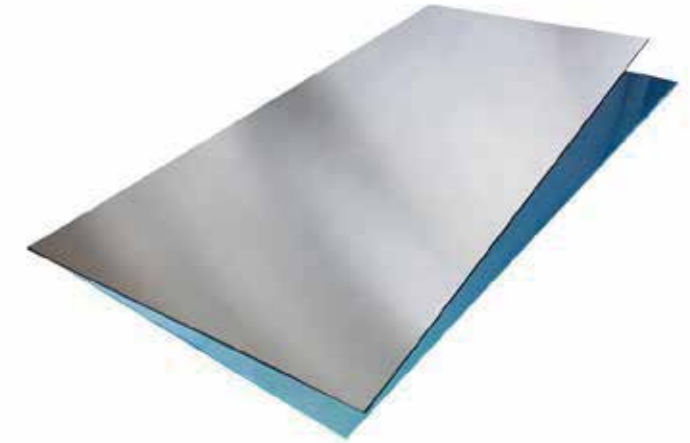
0.2mm~300mm或根据需要  
0.2mm~300mm or as required



# 铝板 ALUMINUM PLATE

## 产品特性 Product characteristics

- 耐腐蚀性Corrosion resistance
- 高温抗氧化High temperature resistance
- 热稳定性Thermal stability
- 可加工性Machinability



## 应用领域 Application area

建筑外观/室内装潢/天花板/墙面/家具/橱柜/电梯  
Architectural exterior / upholstery / ceiling / wall / furniture / cabinet / elevator

### 标准: Standards

ASTM B209 JIS H4000-2006 GB/T 3190-2008  
GB/T 3880-2006 etc

### 材质: Material Quality

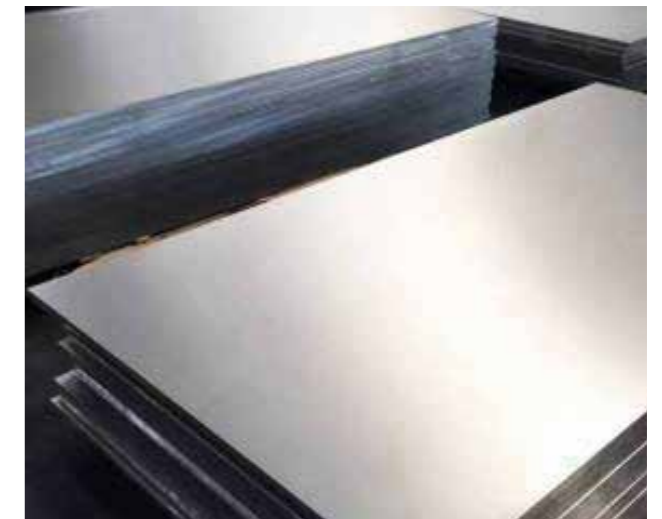
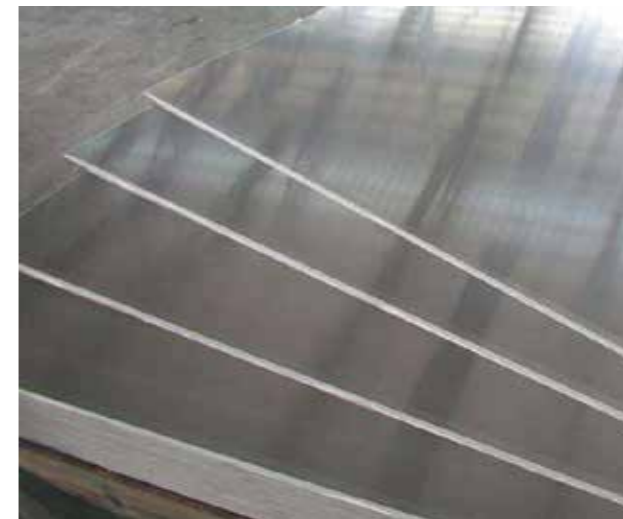
1050、1060、1070、1100、1200、1235、3003、  
3004、3005、3105、3A21、5005、5052、5083、  
5154、5182、5251、5754、6061、6063、6082 etc.

### 宽度: Width

20mm-1550mm或根据需要  
20mm-1550mm or as required

### 厚度: Thickness

0.2mm~300mm或根据需要  
0.2mm~300mm or as required



# 铝管 ALUMINUM PIPE

## 产品特性 Product characteristics

- 耐腐蚀性Corrosion resistant
- 高温抗氧化High temperature antioxidant
- 热稳定性Thermal stable
- 可加工性Machinable



## 应用领域 Application area

建筑外观/室内装潢/天花板/墙面/家具/橱柜/电梯  
Architectural exterior / upholstery / ceiling / wall / furniture / cabinet / elevator

### 标准: Standards

ASTM B209 JIS H4000-2006 GB/T 3190-2008  
GB/T 3880-2006 etc.

### 材质: Material Quality

1050、1060、1070、1100、1200、1235、3003、  
3004、3005、3105、3A21、5005、5052、5083、  
5154、5182、5251、5754、6061、6063、6082 etc.

### 长度: Length

5.8m/6.0m/12.0m或根据需要  
5.8m/6.0m/12.0m or as required

### 壁厚: Thickness

0.2mm-120mm或根据需要  
0.2mm-120mm or as required

### 外径: Out Diameter

2mm-910mm或根据需要  
2mm-910mm or as required



# 铝棒 ALUMINUM BAR

## 产品特性 Product characteristics

- 耐腐蚀性Corrosion resistance
- 高温抗氧化High temperature resistance
- 热稳定性Thermal stability
- 可加工性Machinability



## 应用领域 Application area

建筑外观/室内装潢/天花板/墙面/家具/橱柜/电梯  
Architectural exterior / upholstery / ceiling / wall / furniture / cabinet / elevator

### 标准: Standards

ASTM B209 JIS H4000-2006 GB/T 3190-2008  
GB/T 3880-2006 etc.

### 材质: Material Quality

1050、1060、1070、1100、1200、1235、3003、  
3004、3005、3105、3A21、5005、5052、5083、  
5154、5182、5251、5754、6061、6063、6082 etc.

### 直径: Diameter

0.8mm~120mm或根据需要  
0.8mm-120mm or as required

### 长度: Length

5.8m/6.0m/12.0m或根据需要  
5.8m/6.0m/12.0m or as required



# 铝排 ALUMINUM INGOT

## 产品特性 Product characteristics

导电性: Conductivity  
导热性: Thermal Conductivity  
耐腐蚀性: Corrosion Resistance  
可加工性: Machinability



## 应用领域 Application area

房梁 桥梁 输电塔 船舶 工业炉  
House, bridge, transmission tower, ship, industrial furnace

## 标准: Standards

ASTM B209 JIS H4000-2006 GB/T 3190-2008  
GB/T 3880-2006 etc.

## 材质: Material Quality

1050、1060、1070、1100、1200、1235、3003、  
3004、3005、3105、3A21、5005、5052、5083、  
5154、5182、5251、5754、6061、6063、6082 etc.

## 尺寸: Diameter

823\*183\*110 mm

## 单块重量: Weight

25 kg/pcs

## 型号: Models

AL99.90, AL99.85, AL99.70A, AL99.70,  
AL99.60, AL99.50, AL99.00 etc.



# 镀铝卷 ALUMINUM COATED COIL

## 产品特性 Product characteristics

耐腐蚀性: Corrosion resistant  
高温抗氧化性: High temperature antioxidant  
热稳定性: Thermal stable  
可加工性: Machinable



## 应用领域 Application area

建筑结构 车辆制造和其他工业结构  
Building construction, vehicle manufacturing and other industrial structures

## 标准: Standards

JIS G3302 ASTM A653M EN10327 DIN17162  
EN 10142 EN10147 EN10292 JIS G3302.

## 材质: Material Quality

DX51D+A、DX52D+A、DX53D+A、  
DX54D+A、S220GD+A、DX51D+A、  
SGCC、A653 etc

## 宽度: Width

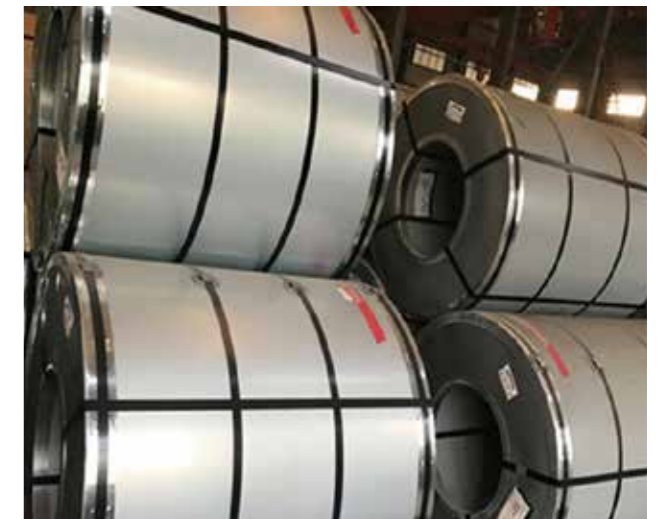
20mm-1550mm或根据需要  
20mm-1550mm or as required

## 厚度: Thickness

0.2mm~6.0mm或根据需要  
0.2mm~6.0mm or as required

## 镀层: Coating

A30-A600g/m<sup>2</sup>





# 合金系列

ALLOY SERIES

合金卷

Alloy coil

合金板

Alloy board sheet

合金管

Alloy pipe

合金棒

Alloy bar

# 合金卷 ALLOY ROLL

## 产品特性 Product characteristics

- 耐腐蚀性Corrosion resistance
- 高温抗氧性High temperature resistance
- 热稳定性Thermal stability
- 可加工性Machinability

## 应用领域 Application area

桥梁、锅炉、造船、装甲、汽车、屋面、电工  
Bridges, boilers, shipbuilding, armor, automobiles, roofing, electricians

## 分类: Classification

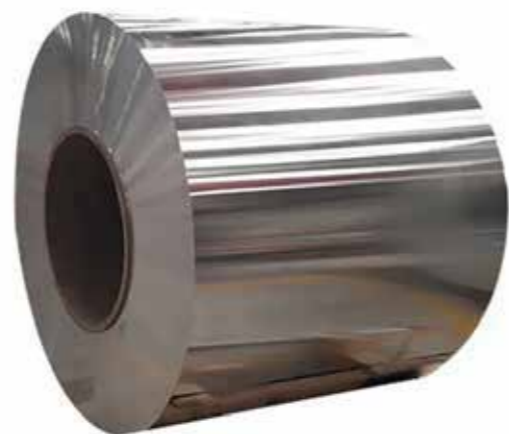
Monel蒙乃尔 INCONEL因科耐尔  
Hastelloy哈氏 nickel镍合金

## 标准: Standards

API5L.ASTM A106 Gr.B,ASTM A53 Gr.B  
ASTMA179/A192/A213/A210/370WP91.WP11

## 宽度: External diameter

1.5m-3.5m或根据需要  
1.5m-3.5m or as required



## 厚度: Thickness

0.1mm-300mm或根据需要  
0.1mm-300mm or as required

## 表面处理: Surface treatment

黑漆、清漆、防锈油、热镀锌、冷镀锌、3PE  
Black paint, varnish, antirust oil, hot dip galvanizing,  
cold galvanizing, 3PE

## 材质: Material Quality

20w.A53B,A106B,API5L ST37.0, ST35.8, St37.2,  
St35.4/8, St42,St52,St52.4, STP G38,STP G42,  
STPT42,STB42



# 合金板 ALLOY BOARD

## 产品特性 Product characteristics

- 耐腐蚀性Corrosion resistance
- 高温抗氧性High temperature resistance
- 热稳定性Thermal stability
- 可加工性Machinability

## 应用领域 Application area

桥梁、锅炉、造船、装甲、汽车、屋面、电工  
Bridges, boilers, shipbuilding, armor, automobiles, roofing, electricians

## 分类: Classification

Monel蒙乃尔 INCONEL因科耐尔  
Hastelloy哈氏 nickel镍合金

## 标准: Standards

API5L.ASTM A106 Gr.B,ASTM A53 Gr.B  
ASTMA179/A192/A213/A210/370WP91.WP11

## 宽度: External diameter

2m-3.5m或根据需要  
2m-3.5m or as required



## 厚度: Thickness

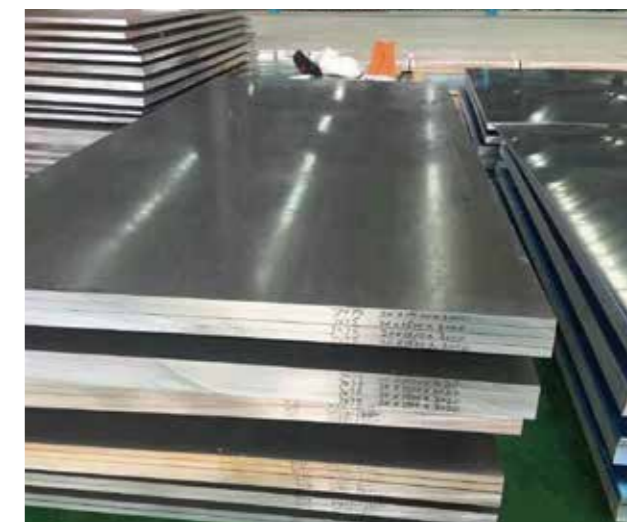
0.1mm-300mm或根据需要  
0.1mm-300mm or as required

## 表面处理: Surface treatment

黑漆、清漆、防锈油、热镀锌、冷镀锌、3PE  
Black paint, varnish, antirust oil, hot dip galvanizing,  
cold galvanizing, 3PE

## 材质: Material Quality

20w.A53B,A106B,API5L ST37.0, ST35.8, St37.2,  
St35.4/8,St42,St52,St52.4, STP G38,STP G42,  
STPT42,STB42



# 合金管 ALLOY PIPE

## 产品特性 Product characteristics

耐腐蚀性Corrosion resistance  
高温抗氧性High temperature resistance  
热稳定性Thermal stability  
可加工性Machinability

## 应用领域 Application area

石油 航天 化工 电力 锅炉 军工  
Oil, aerospace, chemical, power, boilers, military

## 分类: Classification

Monel蒙乃尔 INCONEL因科耐尔  
Hastelloy哈氏 nickel镍合金

## 标准: Standards

API5L.ASTM A106 Gr.B,ASTM A53 Gr.B  
ASTMA179/A192/A213/A210/370WP91.WP11

## 外径: Outer diameter

20mm-6000mm或根据需要  
20mm-6000mm or as required



## 壁厚: Wall thickness

50mm-600mm或根据需要  
50mm-600mm or as required

## 表面处理: Surface treatment

黑漆、清漆、防锈油、热镀锌、冷镀锌、3PE  
Black paint, varnish, antirust oil, hot dip galvanizing,  
cold galvanizing, 3PE

## 材质: Material Quality

20w.A53B,A106B,API5L ST37.0, ST35.8, St37.2,  
St35.4/8, St42,St52,St52.4, STP G38,STP G42,  
STPT42,STB42



# 合金棒 ALLOY BAR

## 产品特性 Product characteristics

耐腐蚀性Corrosion resistance  
高温抗氧性High temperature resistance  
热稳定性Thermal stability  
可加工性Machinability

## 应用领域 Application area

石油 航天 化工 电力 锅炉 军工  
Oil, aerospace, chemical, power, boilers, military

## 分类: Classification

Monel蒙乃尔 INCONEL因科耐尔  
Hastelloy哈氏 nickel镍合金

## 标准: Standards

API5L.ASTM A106 Gr.B,ASTM A53 Gr.B  
ASTMA179/A192/A213/A210/370WP91.WP11

## 直径: Diameter

20mm-6000mm或根据需要  
20mm-6000mm or as required



## 壁厚: Wall thickness

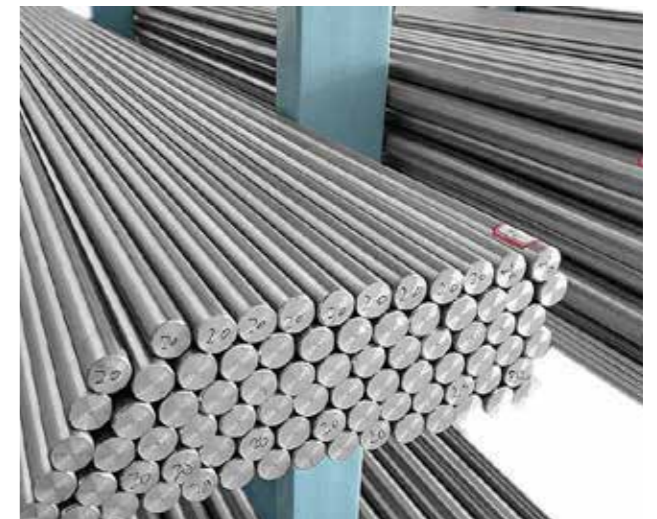
2m-6m或根据需要  
2m-6m or as required

## 表面处理: Surface treatment

黑漆、清漆、防锈油、热镀锌、冷镀锌、3PE  
Black paint, varnish, antirust oil, hot dip galvanizing,  
cold galvanizing, 3PE

## 材质: Material Quality

20w.A53B,A106B,API5L ST37.0, ST35.8, St37.2,  
St35.4/8, St42,St52,St52.4, STP G38,STP G42,  
STPT42,STB42



# 矩形管系列

RECTANGULAR TUBE SERIES

矩形管

Rectangular pipe

方管

Square tube

不锈钢矩形管

Stainless steel rectangular tube

不锈钢方管

Stainless steel square tube

# 矩形管 RECTANGULAR TUBE

## 产品特性 Product characteristics

耐腐蚀性Corrosion resistance  
高温抗氧性High temperature resistance  
热稳定性Thermal stability  
可加工性Machinability



## 应用领域 Application area

桥梁、锅炉、造船、装甲、汽车、屋面、电工  
Bridges, boilers, shipbuilding, armor, automobiles, roofing, electricians

## 标准: Standards

GB/T3094-2000、GB/T6728-2002  
ASTM A500、10219-1-2006、JIS G 3466

## 材质: Material Quality

Q195、Q215、Q235、SS400、20#、45#;  
Q345、16Mn、Q390、ST52-3

## 表面处理: Surface treatment

黑色、镀锌、涂层、涂油、喷漆等  
Black, galvanized, Coated, oiled, painted, etc.

## 长度: Length

6m、12m、或根据长度需要  
6m、12m or as required

## 尺寸: Size

50\*30mm、60\*40mm、80\*40mm  
或根据需要  
50\*30mm、60\*40mm、80\*40mm  
or as required

## 厚度: Thickness

0.8-8.00mm



# 方管 SQUARE TUBE

## 产品特性 Product characteristics

耐腐蚀性Corrosion resistance  
高温抗氧性High temperature resistance  
热稳定性Thermal stability  
可加工性Machinability



## 应用领域 Application area

桥梁、锅炉、造船、装甲、汽车、屋面、电工  
Bridges, boilers, shipbuilding, armor, automobiles, roofing, electricians

## 标准: Standards

GB/T3094-2000、GB/T6728-2002  
ASTM A500、10219-1-2006、JIS G 3466

## 材质: Material Quality

Q195、Q215、Q235、SS400、20#、45#;  
Q345、16Mn、Q390、ST52-3

## 表面处理: Surface treatment

黑色、镀锌、涂层、涂油、喷漆等  
Black, galvanized, Coated, oiled, painted, etc.

## 长度: Length

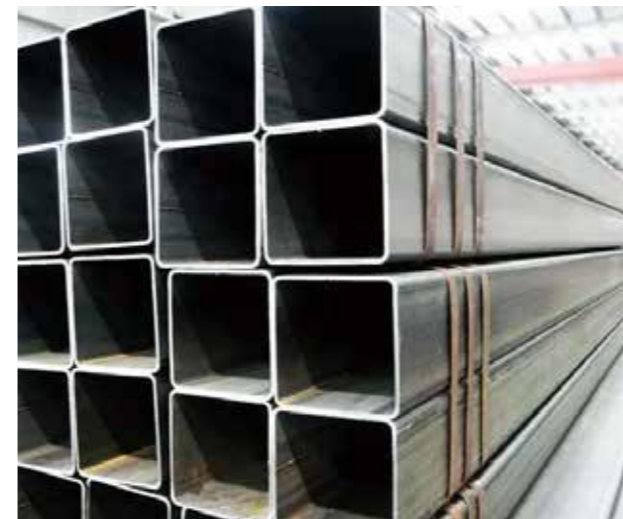
6m、12m、或根据长度需要  
6m、12m or as required

## 尺寸: Size

50\*50mm、60\*60mm、80\*80mm.  
或根据需要  
50\*50mm、60\*60mm、80\*80mm.  
or as required

## 厚度: Thickness

0.8-8.00mm



# 不锈钢矩形管 RECTANGULAR TUBE

## 产品特性 Product characteristics

质量优越、卫生环保、经济实用  
具有保护保养锈层抵御气体腐蚀  
Superior quality, sanitation and environmental protection, economical and practical Has a protective maintenance rust layer against gas corrosion



## 应用领域 Application area

桥梁、锅炉、造船、装甲、汽车、屋面、电工  
Bridges, boilers, shipbuilding, armor, automobiles, roofing, electricians

### 标准: Standards

GB/T3094-2012/ GB/T12770; ASTM A554, ASTM A312 ASTM A249; JISG3446 JIS G3463 or DIN 17457

### 材质: Material Quality

SUS304、304L、316、316L、201、202 304 304L 316 316L、409、430、436、419 436L、BFS600, etc

### 厚度: Thickness

0.8-8.00mm

### 长度: Length

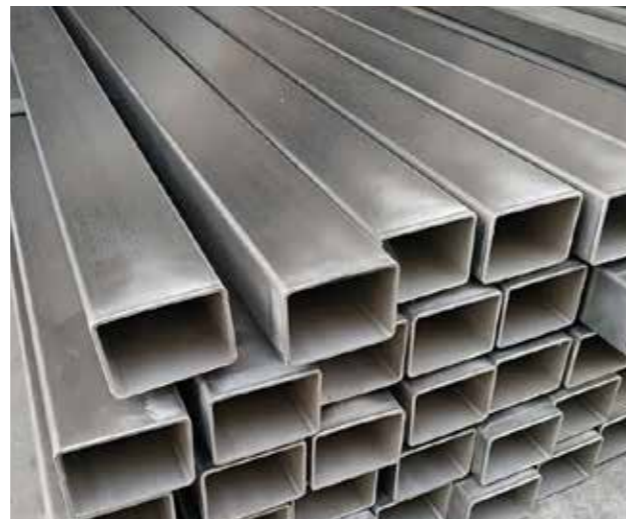
6m、12m、或根据长度需要  
6m、12m or as required

### 尺寸: Size

10\*20~250\*300 mm 或根据需要  
10\*20~250\*300 mm or as required

### 表面处理: Surface treatment

抛光面、拉丝面、抛砂面、工业面  
polished surface, brushed surface, polished surface, industrial surface



# 不锈钢方管 SQUARE TUBE

## 产品特性 Product characteristics

质量优越、卫生环保、经济实用  
具有保护保养锈层抵御气体腐蚀  
Superior quality, sanitation and environmental protection, economical and practical Has a protective maintenance rust layer against gas corrosion



## 应用领域 Application area

桥梁、锅炉、造船、装甲、汽车、屋面、电工  
Bridges, boilers, shipbuilding, armor, automobiles, roofing, electricians

### 标准: Standards

GB/T3094-2012/ GB/T12770; ASTM A554, ASTM A312 ASTM A249; JISG3446 JIS G3463 or DIN 17457

### 材质: Material Quality

SUS304、304L、316、316L、201、202 304 304L 316 316L、409、430、436、419 436L、BFS600, etc

### 厚度: Thickness

0.8-8.00mm

### 长度: Length

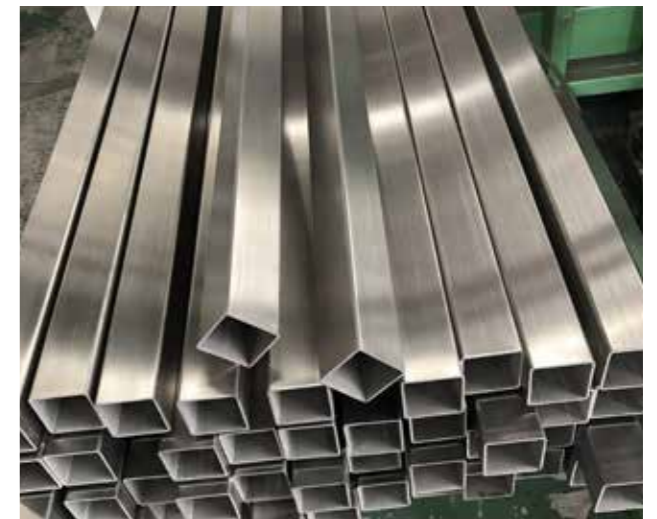
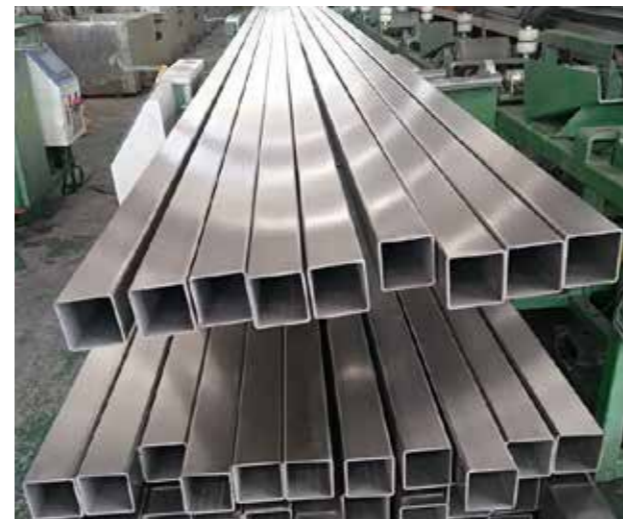
6m、12m、或根据长度需要  
6m、12m or as required

### 尺寸: Size

10\*10~300\*300 mm 或根据需要  
10\*10~300\*300 mm or as required

### 表面处理: Surface treatment

抛光面、拉丝面、抛砂面、工业面  
polished surface, brushed surface, polished surface, industrial surface





# 其他产品

OTHER PRODUCTS

马口铁

Tinplate

镀铝锌卷

Galvalume coil

# 马口铁 TINPLATE

## 产品特性 Product characteristics

- 耐腐蚀性Corrosion resistance
- 高温抗氧化High temperature resistance
- 热稳定性Thermal stability
- 可加工性Machinability

## 应用领域 Application area

桥梁、锅炉、造船、装甲、汽车、屋面、电工  
Bridges, boilers, shipbuilding, armor, automobiles, roofing, electricians

## 标准: Standards

MR SPCC

## 宽度: Width

600-1200mm or as required  
600-1200mm或根据需要



## 厚度: Thickness

0.2mm~6.0mm或根据需要  
0.2mm~6.0mm or as required

## 回火: Temper

T1 t2 t3 t4 t5 dr7 dr8 dr9 th550  
th 580 th 620 th660



# 镀铝锌卷 GALVALUME COIL

## 产品特性 Product characteristics

- 耐腐蚀性Corrosion resistance
- 高温抗氧化High temperature resistance
- 热稳定性Thermal stability
- 可加工性Machinability

## 应用领域 Application area

建筑外观/室内装潢/天花板/墙面/家具/橱柜/电梯  
Architectural exterior / upholstery / ceiling / wall / furnitur

## 标准: Standards

JIS G3302 ASTM A653M EN10327 DIN17162  
EN 10142 EN10147 EN10292 JIS G3302.

## 材质: Material Quality

DX51D+AZ、DX52D+AZ、DX53D+AZ  
DX54D+AZ、S220GD+AZ、DX51D+AZ、  
SGCC、A653 etc



## 厚度: Thickness

0.2mm~6.0mm或根据需要  
0.2mm~6.0mm or as required

## 宽度: Width

20mm-1550mm或根据需要  
20mm-1550mm or as required

## 镀层: Coating

镀层 Coating: AZ30-AZ600g/m2





# 铜系列

## COPPER SERIES

铜 卷 Copper Coil

铜 板 Copper Plate

铜 管 Copper Pipe

铜 棒 Copper Bar

铜 线 Copper wire

# 铜卷 COPPER PIPE

## 产品特性 Product characteristics

- 耐腐蚀性Corrosion resistant
- 高温抗氧化High temperature antioxidant
- 热稳定性Thermal stable
- 可加工性Machinable

## 应用领域 Application area

建筑结构 车辆制造和其他工业结构  
Building construction, vehicle manufacturing and other industrial structures

### 标准: Standards

GB DIN EN JIS ISO UNS

### 材质: Material Quality

TU2 T2 TP2 H90 H62, C10100, C10200, C10300, C10400, C10500, C10700, C10800, C10910, C10920, C10930, etc

### 宽度: Width

20mm-1550mm或根据需要  
20mm-1550mm or as required

### 厚度: Thickness

0.3mm~60mm或根据需要  
0.3mm~60mm or as required



# 铜板 COPPER PLATE

## 产品特性 Product characteristics

- 导电性: Conductivity
- 导热性: Thermal Conductivity
- 耐腐蚀性: Corrosion Resistance
- 可加工性Machinability

## 应用领域 Application area

电力输送、电机制造、通讯电缆、住宅、电气、线路  
Power Delivery、 Motor Manufacturing、 Communication Cable、 Residential Electrical Wiring

### 标准: Standards

GB DIN EN JIS ISO UNS

### 材质: Material Quality

TU2 T2 TP2 H90 H62, C10100, C10200, C10300, C10400, C10500, C10700, C10800, C10910, C10920, C10930, etc

### 宽度: Width

20mm-1550mm或根据需要  
20mm-1550mm or as required

### 厚度: Thickness

0.3mm~100mm或根据需要  
0.3mm~100mm or as required



# 铜管 COPPER PIPE

## 产品特性 Product characteristics

导电性: Conductivity  
导热性: Thermal Conductivity  
耐腐蚀性: Corrosion Resistance  
可加工性: Machinability



## 应用领域 Application area

电力输送、电机制造、通讯电缆、住宅、电气、线路  
Power Delivery、Motor Manufacturing、Communication Cable、Residential Electrical Wiring

## 标准: Standards

GB DIN EN JIS ISO UNS

## 材质: Material Quality

TU2 T2 TP2 H90 H62, C10100, C10200, C10300, C10400, C10500, C10700, C10800, C10910, C10920, C10930, etc

## 形状: Shape

圆管 方管 矩形管等  
Round Square Rectangular etc

## 外径: Out Diameter

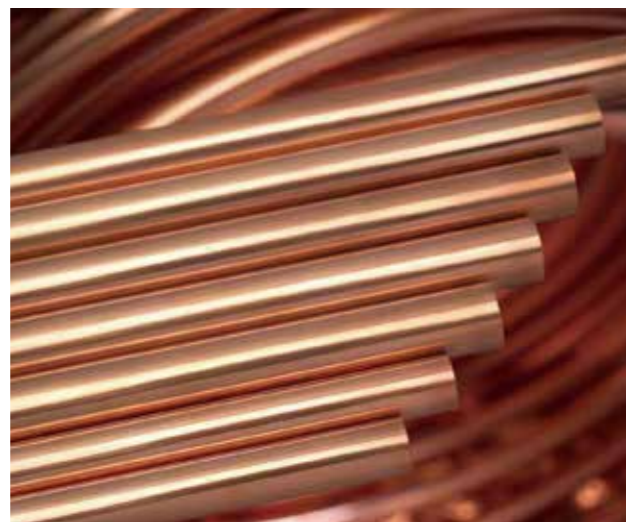
2mm-910mm或根据需要  
2mm-910mm or as required

## 壁厚: Thickness

0.2mm-120mm或根据需要  
0.2mm-120mm or as required

## 长度: Length

5.8m/6.0m/12.0m或根据需要  
5.8m/6.0m/12.0m or as required



# 铜棒 COPPER BAR

## 产品特性 Product characteristics

导电性: Conductivity  
导热性: Thermal Conductivity  
耐腐蚀性: Corrosion Resistance  
可加工性: Machinability



## 应用领域 Application area

房梁 桥梁 输电塔 船舶 工业炉  
House, bridge, transmission tower, ship, industrial furnace

## 标准: Standards

GB DIN EN JIS ISO UNS

## 材质: Material Quality

TU2 T2 TP2 H90 H62, C10100, C10200, C10300, C10400, C10500, C10700, C10800, C10910, C10920, C10930, etc

## 直径: Diameter

600mm-1500mm或根据需要  
600mm-1500mm or as required

## 长度: Length

0.12mm-6.00mm或根据需要  
0.12mm-6.00mm or as required



# 铜线 COPPER WIRE

## 产品特性 Product characteristics

- 耐腐蚀性Corrosion resistant
- 高温抗氧化High antioxidant
- 高耐磨性High wear resistance
- 可加工性Machinability



## 应用领域 Application area

电力输送、电机制造、通讯电缆、住宅、电气、线路

Power Delivery、Motor Manufacturing、Communication Cable、Residential Electrical Wiring

### 尺寸: Size

7/0gauge to 32gauge  
12.7mm to 0.27mm

### 标准: Standards

GB DIN EN JIS ISO UNS

### 材质: Material Quality

TU2 T2 TP2 H90 H62, C10100, C10200, C10300,  
C10400, C10500, C10700, C10800, C10910,  
C10920, C10930, etc



# 铜合金牌号对照表 COMPARISON TABLE OF COPPER ALLOY GRADES

## 一、铅黄铜牌号对照表 Lead Brass Comparison Table

中国牌号	日本牌号	德国牌号	美国牌号	英国牌号
GB	JIS	DIN	ASTM	BS
HPb59-1	C3710	CuZn40Pb2	C37000	CZ120
HPb59-3	C3561	CuZn40Pb3	C37710	CZ121Pb3
HPb60-2	C3771	CuZn39Pb2	C37700	CZ120
HPb62-2	C3713	CuZn38Pb2	C35300	CZ119
HPb62-3	C3601	CuZn36Pb3	C36000	CZ124
HPb63-3	C3560	CuZn36Pb3	C35600	CZ124

## 二、普通黄铜牌号对照表 Brass comparison table

中国牌号	日本牌号	德国牌号	美国牌号	英国牌号
GB	JIS	DIN	ASTM	BS
H59	C2800	CuZn40	C28000	CZ109
H62	C2720	CuZn40	C27400	CZ109
H65	C2680	CuZn35	C27000	CZ107
H68	C2600	CuZn30	C26000	CZ106
H70	C2600	CuZn30	C26000	CZ106
H80	C2400	CuZn20	C24000	CZ103
H85	C2300	CuZn15	C23000	CZ102
H90	C2200	CuZn10	C22000	CZ101
H96	C2100	CuZn5	C21000	--

## 三、紫铜牌号对照表 Red Copper Comparison Table

名称	中国牌号	日本牌号	德国牌号	美国牌号	英国牌号
NAME	GB	JIS	DIN	ASTM	BS
零号无氧铜	TU0	C1011	--	C10100	C110
一号无氧铜	TU1	C1020	OF-Cu	C10200	C103
二号无氧铜	TU2	C1020	OF-Cu	C10200	C103
一号铜	T1	C1020	OF-Cu	C10200	C103
二号铜	T2	C1100	SE-Cu	C11000	C101
三号铜	T3	C1221	--	--	--
一号磷脱氧铜	TP1	C1201	SW-Cu	C12000	--
二号磷脱氧铜	TP2	C1220	SF-Cu	C12000	--

# 各国铜牌号及标准对照表

## STAINLESS STEEL MATERIAL COMPOSITION TABLE

中国	德国		欧洲		国际标准	美国	日本
GB	DIN		EN		ISO	UNS	JIS
TU2	OF-Cu	2.0040	Cu-OFE	CW009A	Cu-OF	C10100	C1011
---	SE-Cu	2.0070	Cu-HCP	CW021A	---	C10300	---
---	SE-Cu	2.0070	Cu-PHC	CW020A	---	C10300	---
T2	E-Cu58	2.0065	Cu-ETP	CW004A	Cu-ETP	C11000	C1100
TP2	SF-Cu	2.0090	Cu-DHP	CW024A	Cu-DHP	C12200	C1220
---	SF-Cu	2.0090	Cu-DHP	CW024A	Cu-DHP	C12200	C1220
---	SF-Cu	2.0090	Cu-DHP	CW024A	Cu-DLP	C12200	C1220
TP1	SW-Cu	2.0076	Cu-DLP	CW023A	Cu-DLP	C12000	C1201
H96	CuZn5	2.0020	CuZn5	CE500L	CuZn5	C21000	C2100
H90	CuZn10	2.0030	CuZn10	CW501L	CuZn10	C22000	C2200
H85	CuZn15	2.0040	CuZn15	CW502L	CuZn15	C23000	C2300
H80	CuZn20	2.0050	CuZn20	CW503L	CuZn20	C24000	C2400
H70	CuZn30	2.0065	CuZn30	CW505L	CuZn30	C26000	C2600
H68	CuZn33	2.0080	CuZn33	CW506L	CuZn35	C26800	C2680
H65	CuZn36	2.0335	CuZn36	CW507L	CuZn35	C27000	C2700
H63	CuZn37	2.0321	CuZn37	CW508L	CuZn37	C27200	C2720
HPb63-3	CuZn36Pb1.5	2.0331	CuZn35Pb1	CW600N	CuZn35Pb1	C34000	C3501
HPb63-3	CuZn36Pb1.5	2.0331	CuZn35Pb2	CW601N	CuZn34Pb2	C34200	---
H62	CuZn40	2.0360	CuZn40	CW509N	CuZn40	C28000	C3712
H60	CuZn38Pb1.5	2.0371	CuZn38Pb2	CW608N	CuZn37Pb2	C35000	---
HPb63-3	CuZn36Pb3	2.0375	CuZn36Pb3	CW603N	CuZn36Pb3	C36000	C3601

HPb59-1	CuZn39Pb2	2.0380	CuZn39Pb2	CW612N	CuZn38Pb2	C37700	C3771
HPb58-2.5	CuZn39Pb3	2.0401	CuZn39Pb3	CW614N	CuZn39Pb3	C38500	C3603
---	CuZn40Pb2	2.0402	CuZn40Pb2	CW617N	CuZn40Pb2	C38000	C3771
---	CuZn28Sn1	2.0470	CuZn28Sn1As	CW706R	CuZn28Sn1	C68800	C4430
---	CuZn31Si1	2.0490	CuZn31Si1	CW708R	CuZn31Si1	C44300	---
---	CuZn20Al2	2.0460	CuZn20Al2As	CW702R	CuZn20Al2	C68700	C6870
QSn4-0.3	CuSn4	2.1016	CuSn4	CW450K	CuSn4	C51100	C5111
---	CuSn5	2.1018	CuSn5	CW451K	CuSn5	C51000	C5102
QSn6.5-0.1	CuSn6	2.1020	CuSn6	CW452K	CuSn6	C51900	C5191
QSn8-0.3	CuSn8	2.1030	CuSn8	CW453K	CuSn8	C52100	C5210
BZn12-24	CuNi12Zn24	2.0730	CuNi12Zn24	CW403J	CuNi12Zn24	C75700	---
BZn12-26	CuNi18Zn27	2.0742	CuNi18Zn27	CW410J	CuNi18Zn27	C77000	C7701
BZn18-18	CuNi18Zn20	2.0740	CuNi18Zn20	CW409J	CuNi18Zn20	C76400	C7521
---	CuNi10Fe1Mn	2.0872	CuNi10Fe1Mn	CW352H	CuNi10Fe1Mn	C70600	C7060
---	CuNi30Mn1Fe	2.8820	CuNi30Mn1Fe	CW354H	CuNi30Mn1Fe	C71500	C7150

## CASE INTRODUCTION



# 碳素钢材质等级对比

Comparison Table of Carbon Steel Materials

中国	德国	法国	国际标准	日本	瑞典	英国	美国	
GB	DIN	W-Nr	ISO	JIS	SS	BS	ASTM	
Q195 (A1,B1)	S185 (st33)	1.0035	S185 (A33)	HR2	---	S185 (140A10)	A285M Gr.B	
Q215A	USt34-2	1.0028	A34	HR1	SS 330 (SS34)	1370	040A12	A283M Gr.C
A215B (A2,C2)	RSt34-2	1.0034	A34-2NE	---	---	---	---	A573M Gr 58
Q235A	S235JR	1.0037	S235JR	Fe 360A	SS 400 (SS41)	1311	S235JR	A570 Gr.A
Q235B	S235JRG1	1.0036	S235JRG1	Fe 360D	---	1312	---	A570 Gr.D
Q235C	S235JRG2	1.0038	S235JRG2	---	---	---	S235JRG1	A283M Gr.D
	(St 37-2)		(E24-2)				S235JRG2	
	(USt 37-2)		(E24-2NE)				(40B.C)	
	(RSt 37-2)							
Q235D (A3,C3)	---	---	---	---	---	---	---	
Q255A	St44-2	1.0044	(E28-2)		SM 400A	1412	43B	A709M Gr.36
Q255D (A4,C4)	---	---	---	---	SM 400B (SM 41A) (SM 41B)	---	---	---
Q275 (C5)	S275J2G3	1.0144	S275J2G3	Fe430A	SS 490	1430	S275J2G3	---
---	S275J2G4	1.0145	S275J2G4		SSS0		S275J2G4	
---	(St44-3N)	1.0055	---		---		(43D)	
05F	D6-2	1.0314	---	---	---	---	015A03	1005
08F	USt4	1.0336	---	---	S9CX	---	---	≈ 1008
08	---	---	XC6	---	---	---	040A04 050A04	1008
10F	USt 13	---	---	---	---	---	---	≈ 1010
10	C10	1.0301	C10	---	S10C	1265	040A10	1010
	Ck10	1.1121	XC10				045M10	
15	C15	1.0401	C12	---	S15C	1350	040A15	1015
	Ck15	1.1141	XC15			1370	080M15	
20	C22E	1.1151	C22E	---	S20C	1435	C22E	1020
	Ck22		XC18				070M20	
25	C25E	1.1158	C25E	C25E4	S25C	---	C25E	1025
	Ck25		XC25				070M26	

# 不锈钢材质成分表

Composition Table of Stainless Steel Materials

Grade	C	Si	Mn	P	S	Ni	Cr	Mo
201	≤ 0.15	≤ 0.75	5.5—7.5	≤ 0.06	≤ 0.03	3.5—5.5	16.0—18.0	16.0—18.0
202	≤ 0.15	≤ 1.0	7.5—10.0	≤ 0.06	≤ 0.03	4.0—6.0	17.0—19.0	
301	≤ 0.15	≤ 1.0	≤ 2.0	≤ 0.045	≤ 0.03	6.0—8.0	16.0—18.0	
302	≤ 0.15	≤ 1.0	≤ 2.0	≤ 0.035	≤ 0.03	8.0—10.0	17.0—19.0	
304	≤ 0.008	≤ 1.0	≤ 2.0	≤ 0.045	≤ 0.03	8.0—10.5	18.0—20.0	
304L	≤ 0.03	≤ 1.0	≤ 2.0	≤ 0.035	≤ 0.03	9.0—13.0	18.0—20.0	
309S	≤ 0.08	≤ 1.0	≤ 2.0	≤ 0.045	≤ 0.03	12.0—15.0	22.0—24.0	
310S	≤ 0.08	≤ 1.0	≤ 2.0	≤ 0.035	≤ 0.03	19.0—22.0	24.0—26.0	
316	≤ 1.0	≤ 1.0	≤ 2.0	≤ 0.045	≤ 0.03	10.0—14.0	16.0—18.0	2.0—3.0
316L	≤ 0.03	≤ 1.0	≤ 2.0	≤ 0.045	≤ 0.03	12.0—15.0	16.0—18.0	2.0—3.0
321	≤ 0.08	≤ 1.0	≤ 2.0	≤ 0.015	≤ 0.03	9.0—13.0	17.0—19.0	
630	≤ 0.07	≤ 1.0	≤ 1.0	≤ 0.035	≤ 0.03	3.0—5.0	16.0—18.0	
631	≤ 0.09	≤ 1.0	≤ 1.0	≤ 0.030	≤ 0.035	6.50—7.75	16.0—18.0	
904L	≤ 0.045	≤ 0.045	≤ 1.0	≤ 0.035		23.0—28.0	19.0—23.0	4.0—5.0
220S	≤ 0.03	≤ 1.0	≤ 2.0	≤ 0.030	≤ 0.02	4.5—6.5	22.0—23.0	3.0—3.5
2507	≤ 0.03	≤ 0.8	≤ 1.2	≤ 0.035	≤ 0.02	6.0—8.0	24.0—26.0	3.0—5.0
2520	≤ 0.08	≤ 1.5	≤ 2.0	≤ 0.045	≤ 0.03	0.09—0.22	0.24—0.26	
410	≤ 0.15	≤ 1.0	≤ 1.0	≤ 0.035	≤ 0.03		11.5—13.5	
430	≤ 0.12	≤ 0.75	≤ 1.0	≤ 0.040	≤ 0.03	≤ 0.60	16.0—18.0	

# 国际钢管材质等级对比

## Comparison of International Steel Pipe Material Grades

钢种 SteelGrade	中国GB	日本JIS		美国ASTM	德国 DIN			
	牌号	牌号	标准号	钢号	钢号	材料号	标准号	
碳素 钢管 Carbon steel pipe	(Q235)	GCP STPY41	G3452 G3457	(A53 钢种 F) A283-D	(St33)	1.0033	DIN1626	
	10	STPG38	G3454	A135-A A53-A	(St37)	1.0110	DIN1626	
		STPG38	G3456	A106-A	St37-2	1.0112	DIN17175	
		STS38	G3455	---	St35-8	1.0309	DIN1629/4	
		STB30	G3461	A179-C A214-C	St35-8	1.0305	DIN17175	
		STB33	G3461	A192 A226	St35-8	1.0305	DIN17175	
		STB35	G3461	---	St35-8	1.0305	DIN17175	
		20	STBG42	G3454	A135-B A53-B	(St42) (St42-2)	1.0130 1.0132	DIN1626
	STPT42		G3456	A106-B	(St45-8)	1.0405	DIN17175	
	STS42		G3461	A106-B	(St45-8)	1.0405	DIN17175	
	STB42		G3455	A178-C A201-A-1	(St45-4)	1.0309	DIN1629/4	
	低合金 钢管 Low Alloy Steel Pipe	16Mn	STS49 STPT49	G3455 G3456	A201-C	St52.4 St52	1.0832 1.0831	DIN1629/4 DIN1629/3
		15MnV	STBL39	G3464	---	---	---	---
	低温 钢管 Low temperature steel pipe	16Mn	STBL39	G3460	A333-1.6	TT St35N	1.0356	SEW680
15MnV		STBL39	G3464	A334-1.6				
09Mn2V		---	---	A333-7.9 A334-7.9	TT St35N	1.0356	SEW680	
06A1NbCuN		STBL46 STBL	G3460 G3464	A333-3.4 A334-3.4	10Ni14	1.5637	SEW680	
20Mn23A1		---	---	A333-8 A334-8	X8Ni9	1.5662	SEW680	

耐热 钢管 Heat resisting steel pipe	16Mo	STPA12 STBA12、13	G3458 G3462	A335-P1、A369-FP1 A250-T1、A209-T1	15Mo3	1.5414	DIN17175
	12CrMo	STBA20	G3462	A335-P2、A369-FP2 A213-T2	---	---	---
	---	STPA22	G3458	A335-P12、A369-PP12	13CrMo44	1.7335	DIN17175
	---	STBA22	G3462	A213-T12	---	---	---
	12Cr1MoV	STPA23 STBA23	G3458 G3462	A335-P11、A369-FP12 A199-T11、A213-T11	---	---	---
	Gr2Mo 10MoWVNb	---	G3458 G3462	A335-P5、A389-FP5 A213-T5	12CrMo195	1.7362	DIN17175
不锈 耐酸 钢管 Stainless acid proof steel pipe	Cr5Mo	STPA25 STBA25 STPA26 STBA26	G3458 G3462 G3458 G3462	A335-P5、A389-FP5 A335-P9、A369-FP9 A199-T9、A213-T9 A213-T5	12CrMo195	1.7362	DIN17175
	(1Gr13)	SUS410 TP	G3463	A268 TP410	X10Cr13	1.4006	DIN17440
	(2Gr13)			(SISI 420)	X20Cr13	1.4021	DIN17440
	(1Gr17)	SUS430 TB	G3463	A268 TP430/TP429	X8Cr17	1.4016	DIN17440
	0Cr18Ni9	SUS304 TP/TB	G3459 G3463	A312、A376、TP304 A213、A249、A268 TP304	X5CrNi189	1.4301	DIN17440
	1Cr18Ni9	---	---	---	X10CrNi189	1.4301	DIN17440
	0Cr18Ni10Ti 1Cr18Ni9Ti	SUS321 TP/TB	G3459 G3463	A312、A376、TP321 A213、A249、A266 TP321	---	1.4541	DIN17440
	0Cr18Ni13Mo2Ti	SUS316 TP/TB	G3459 G3463	A312、A376、TP316 A213、A249、A266 TP316	---	---	---
	0Cr18Ni13Mo3Ti	SUS317 TP/TB	G3459 G3463	A312、A376、TP316 A213、A249、A268 TP317	---	---	---
	00Cr18Ni10	SUS304L TP/TB	G3459 G3463	A312、A376、TP34L A213、A249、A268 TP304L	X2CrNi189	1.4306	DIN17440
	00Cr17Ni13Mo2	SUS316L TP/TB	G3459 G3463	A312、A376、TP316L A213、A249、A268 TP316L	X2CrNi810	1.4404	DIN17440
	00Cr17Ni13Mo3	SUS317L TP/TB	G3459 G3463	A312、A376、TP317L A213、A249、A268 TP317L	---	---	---