



中国认可  
国际互认  
检测  
TESTING  
CNAS L5772



**TEST REPORT**  
**IEC 60086-4**  
**Primary batteries**  
**Part 4: Safety of lithium batteries**

**Report Number**.....: PTC23081106505S-IE02  
**Date of issue**.....: 2024-03-27  
**Total number of pages**..... 20 pages

**Name of Testing Laboratory preparing the Report**.....: Precise Testing & Certification (Guangdong) Co., Ltd.

**Applicant's name**.....: Liyuan Battery Technology (Shenzhen) Co., Ltd  
**Address**.....: Room 201, Building B, Gushu Hongwan Co., Ltd., Sanwei Community, Hangcheng Street, Baoan District, Shenzhen

**Test specification:**  
**Standard**.....: IEC 60086-4: 2019  
**Test procedure**.....: Type Test  
**Non-standard test method**.....: N/A

**Test Report Form No**.....: IEC60086\_4C  
**Test Report Form(s) Originator**.....: DEKRA  
**Master TRF**.....: Dated 2019-06-19

**Copyright © 2019 IEC System of Conformity Assessment Schemes for Electrotechnical Equipment and Components (IECEE System). All rights reserved.**

This publication may be reproduced in whole or in part for non-commercial purposes as long as the IECEE is acknowledged as copyright owner and source of the material. IECEE takes no responsibility for and will not assume liability for damages resulting from the reader's interpretation of the reproduced material due to its placement and context.



**General disclaimer:**

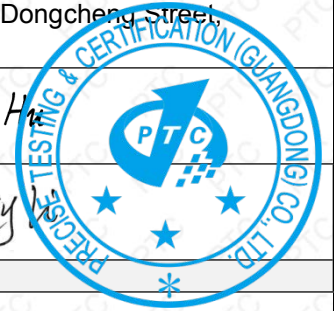
The test results presented in this report relate only to the object tested.  
This report shall not be reproduced, except in full, without the written approval of Precise Testing & Certification (Guangdong) Co., Ltd. The this Test Report and its contents can be verified by contacting the Precise Testing & Certification (Guangdong) Co., Ltd., responsible for this Test Report

**Test item description**.....: 3V Coin Cell  
**Trade Mark(s)**.....: LIYUAN  
**Manufacturer**.....: Liyuan Battery Technology (Shenzhen) Co., Ltd  
Room 201, Building B, Gushu Hongwan Co., Ltd., Sanwei Community, Hangcheng Street, Baoan District, Shenzhen  
**Model/Type reference**.....: CR2025  
**Ratings**.....: 3.0V, 150mAh



**Responsible Testing Laboratory (as applicable), testing procedure and testing location(s):**

<input checked="" type="checkbox"/>	<b>Testing Laboratory:</b>	Precise Testing & Certification (Guangdong) Co., Ltd.
	<b>Testing location/ address.....:</b>	Building 1, No. 6, Tongxin Road, Dongcheng Street, Dongguan, Guangdong, China.
	<b>Tested by (name, function, signature).....:</b>	Curly Hu 
	<b>Approved by (name, function, signature)...:</b>	Starry Li 



<input type="checkbox"/>	<b>Testing procedure: CTF Stage 1:</b>	
	<b>Testing location/ address.....:</b>	
	<b>Tested by (name, function, signature).....:</b>	
	<b>Approved by (name, function, signature)...:</b>	

<input type="checkbox"/>	<b>Testing procedure: CTF Stage 2:</b>	
	<b>Testing location/ address.....:</b>	
	<b>Tested by (name + signature).....:</b>	
	<b>Witnessed by (name, function, signature)..:</b>	
	<b>Approved by (name, function, signature)...:</b>	

<input type="checkbox"/>	<b>Testing procedure: CTF Stage 3:</b>	
<input type="checkbox"/>	<b>Testing procedure: CTF Stage 4:</b>	
	<b>Testing location/ address.....:</b>	
	<b>Tested by (name, function, signature).....:</b>	
	<b>Witnessed by (name, function, signature)..:</b>	
	<b>Approved by (name, function, signature)...:</b>	
	<b>Supervised by (name, function, signature):</b>	

**List of Attachments (including a total number of pages in each attachment):**

Attachment 1: Photo Documentation (5 pages).

**Summary of testing:****Tests performed (name of test and test clause):**

6 4 1 Test A Altitude  
6 4 2 Test B Thermal cycling  
6 4 3 Test C Vibration  
6 4 4 Test D Shock  
6 5 1 Test E External short circuit  
6 5 3 Test G Crush  
6 5 4 Test H Forced discharge  
6 5 5 Test I Abnormal charging  
6 5 6 Test J Free fall  
6 5 7 Test K Thermal abuse  
7 2 Safety precautions Ingestion gauge

**Testing location:**

Precise Testing & Certification (Guangdong) Co., Ltd.  
Building 1, No. 6, Tongxin Road, Dongcheng Street,  
Dongguan, Guangdong, China.

**Summary of compliance with National Differences (List of countries addressed):**

The product fulfils the requirements of EN IEC60086 4 2019

**Copy of marking plate:**

**The artwork below may be only a draft. The use of certification marks on a product must be authorized by the respective NCBs that own these marks.**

3V Coin Cell  
Model: CR2025  
+ Ratings: 3.0V, 150mAh -  
YYYY/MM/DD  
Suzhou MEELY Tools Technology Co., LTD  
WARNING  
Do not disassemble puncture crush heat or burn

## 1. Remark:

“YYYY” means year for manufacture;

“MM” means month for manufacture;

“DD” means day for manufacture.

2. The applicant and manufacturer information product name model trademark and other information in this report are all provided by the applicant and this laboratory is not responsible for verifying its authenticity



<b>Test item particulars..... :</b>	
<b>Classification of installation and use..... :</b>	To be defined in final product
<b>Supply Connection..... :</b>	Electrode Tab
<b>Possible test case verdicts:</b>	
- test case does not apply to the test object..... :	N/A
- test object does meet the requirement..... :	P (Pass)
- test object does not meet the requirement..... :	F (Fail)
<b>Testing..... :</b>	
<b>Date of receipt of test item..... :</b>	2024-02-22
<b>Date (s) of performance of tests..... :</b>	2024-02-22 to 2024-03-27
<b>General remarks:</b>	
<p>"(See Enclosure #)" refers to additional information appended to the report.          "(See appended table)" refers to a table appended to the report.</p> <p><b>Throughout this report a <input type="checkbox"/> comma / <input checked="" type="checkbox"/> point is used as the decimal separator.</b></p>	
<b>Name and address of factory (ies)..... :</b>	Same as manufacturer

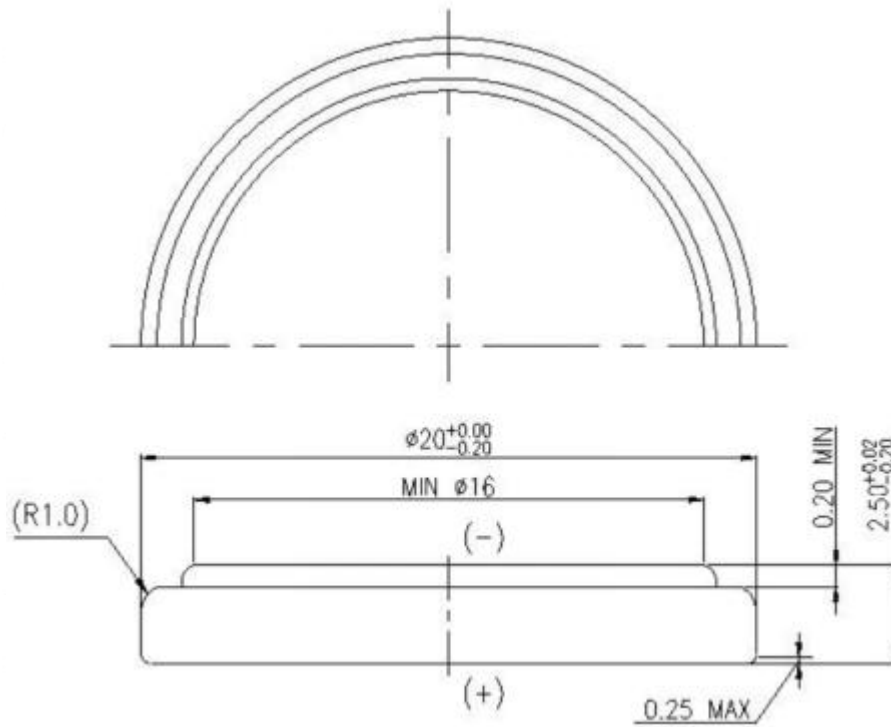
**General product information and other remarks:**

This product is a single primary cell and has no over discharge overcurrent and short circuits proof circuit

The main features of the cell are shown as below

Model	Nominal capacity	Nominal voltage	Maximum Discharge Current	Cut off Voltage
CR2025	150mAh	3.0V	0.42mA	2.0V

**Construction Unit mm**



Cell Unit mm

**Circuit diagram**

N/A



IEC 60086-4			
Clause	Requirement + Test	Result - Remark	Verdict
<b>4</b>	<b>REQUIREMENTS FOR SAFETY</b>		<b>P</b>
<b>4.1</b>	<b>Design</b>		<b>P</b>
	a) Abnormal temperature rise above the critical value		<b>P</b>
	b) Temperature increases in the battery controlled		<b>P</b>
	c) Lithium cells and batteries designed to relieve excessive internal pressure or to preclude a violent rupture under conditions of transport, intended use and reasonably foreseeable misuse	Venting mechanism exists on the narrow side of the cell	<b>P</b>
<b>4.2</b>	<b>Quality plan</b>		<b>P</b>
	Manufacturer prepared and implemented a quality plan defining the procedures for the inspection of materials, components, cells and batteries during the course of manufacture, to be applied to the total process of producing a specific type of battery	Complied. Quality plan provided	<b>P</b>
	Manufactures understood their process capabilities and instituted the necessary process controls as they relate to product safety		<b>P</b>
<b>5</b>	<b>TYPE TESTING AND SAMPLING</b>		<b>P</b>
<b>5.1</b>	<b>Validity of testing</b>		<b>P</b>
<b>5.2</b>	<b>Test samples</b>		<b>P</b>
		(See table 1 in the standard)	
<b>6</b>	<b>TESTING AND REQUIREMENTS</b>		<b>P</b>
<b>6.1</b>	<b>General</b>		<b>P</b>
6.1.1	Test application matrix	(See table 2 in the standard)	<b>P</b>
	s: cell or single cell battery .....		<b>P</b>
	m: multi cell battery .....		<b>N/A</b>
6.1.3	Ambient temperature (°C)..... :	20°C ± 5°C.	<b>P</b>
6.1.4	Parameter measurement tolerances		<b>P</b>
6.1.5	Predischarge		<b>P</b>
6.1.6	Additional cells		<b>N/A</b>
<b>6.2</b>	<b>Evaluation of test criteria</b>		<b>P</b>
6.2.1	Short-circuit		<b>P</b>
6.2.2	Excessive temperature rise		<b>P</b>
6.2.3	Leakage		<b>P</b>
6.2.4	Venting		<b>P</b>
6.2.5	Fire		<b>P</b>
6.2.6	Rupture		<b>P</b>
6.2.7	Explosion		<b>P</b>
<b>6.3</b>	<b>Tests and requirements – Overview</b>		<b>P</b>
		(See table 4 in the standard)	



<b>IEC 60086-4</b>			
Clause	Requirement + Test	Result - Remark	Verdict
<b>6.4</b>	<b>Tests for intended use</b>		<b>P</b>
6.4.1	Test A: Altitude .....	(See appended table 1)	P
6.4.2	Test B: Thermal cycling .....	(See appended table 1)	P
6.4.3	Test C: Vibration .....	(See appended table 1)	P
6.4.4	Test D: Shock .....	(See appended table 1)	P
<b>6.5</b>	<b>Tests for reasonably foreseeable misuse</b>		<b>P</b>
6.5.1	Test E: External short-circuit.....	(See appended table 1)	P
6.5.2	Test F: Impact .....		N/A
6.5.3	Test G: Crush .....	(See appended table 1)	P
6.5.4	Test H: Forced discharge .....	(See appended table 1)	P
6.5.5	Test I: Abnormal charging .....	(See appended table 1)	P
6.5.6	Test J: Free fall .....	(See appended table 1)	P
6.5.7	Test K: Thermal abuse .....	(See appended table 1)	P
6.5.8	Test L: Incorrect installation .....		N/A
6.5.9	Test M: Overdischarge .....		N/A
<b>6.6</b>	<b>Information given in the relevant specification</b>		<b>P</b>
	a) Predischage current or resistive load and end-point voltage specified by the manufacturer .....		P
	b) Method to measure the energy of an explosion, if any.....		P
	c) Shape: prismatic, flexible, coin or cylindrical Diameter: less than 18 mm or not less than 18 mm. ....	Coin Cell.	P
	d) Maximum continuous discharge current specified by the manufacturer for test H.....	0.42mA as specified by manufacturer applied.	P
	e) Rated capacity specified by the manufacturer for test H .....	150mAh	P
	f) Abnormal charging current declared by the manufacturer for test I .....	0.42mA as specified by manufacturer applied.	P
	g) Normal reverse current declared by the manufacturer which applied to the battery during its operating life.....		P
<b>7</b>	<b>INFORMATION FOR SAFETY</b>		<b>P</b>
<b>7.1</b>	<b>Safety precautions during design of equipment</b>		<b>N/A</b>
7.1.1	General		N/A
7.1.2	Charge protection		N/A
7.1.3	Parallel connection		N/A

<b>IEC 60086-4</b>			
Clause	Requirement + Test	Result - Remark	Verdict
<b>7.2</b>	<b>Precautions during handling of batteries</b>	Safety precautions are shown in battery specification and user manual.	<b>P</b>
<b>7.3</b>	<b>Packaging</b>		<b>P</b>
<b>7.4</b>	<b>Handling of battery cartons</b>		<b>P</b>
<b>7.5</b>	<b>Transport</b>		<b>P</b>
7.5.1	General		<b>P</b>
7.5.2	Air transport		<b>P</b>
7.5.3	Sea transport		<b>P</b>
7.5.4	Land transport		<b>P</b>
<b>7.6</b>	<b>Display and storage</b>		<b>P</b>
<b>7.7</b>	<b>Disposal</b>		<b>P</b>
<b>8</b>	<b>INSTRUCTIONS FOR USE</b>		<b>P</b>
<b>9</b>	<b>MARKING AND PACKAGING</b>		<b>P</b>
<b>9.1</b>	<b>General</b>	See 9.2	<b>P</b>
<b>9.2</b>	<b>Swallowable batteries</b>		<b>P</b>
<b>9.3</b>	<b>Safety pictograms</b>		<b>P</b>
<b>ANNEX A</b>	<b>(INFORMATIVE) GUIDELINES FOR THE ACHIEVEMENT OF SAFETY OF LITHIUM BATTERIES</b>		<b>P</b>
<b>ANNEX B</b>	<b>(INFORMATIVE) GUIDELINES FOR DESIGNERS OF EQUIPMENT USING LITHIUM BATTERIES</b>		<b>N/A</b>
<b>ANNEX C</b>	<b>(INFORMATIVE) ADDITIONAL INFORMATION ON DISPLAY AND STORAGE</b>		<b>P</b>
<b>ANNEX D</b>	<b>(INFORMATIVE) SAFETY PICTOGRAMS</b>		<b>P</b>
<b>D.1</b>	<b>General</b>		<b>P</b>
<b>D.2</b>	<b>Pictograms</b>		<b>P</b>
<b>D.3</b>	<b>Instruction for use</b>		<b>P</b>
<b>ANNEX E</b>	<b>(NORMATIVE) CHILD RESISTANT PACKAGING OF COIN CELLS</b>		<b>N/A</b>
<b>E.1</b>	<b>General</b>		<b>N/A</b>
<b>E.2</b>	<b>Applicability</b>		<b>N/A</b>
<b>E.3</b>	<b>Packaging tests</b>		<b>N/A</b>
E.3.1	General		<b>N/A</b>
E.3.2	Test items		<b>N/A</b>
E.3.3	Test procedure		<b>N/A</b>
E.3.4	Criteria		<b>N/A</b>

**IEC 60086-4**

Clause	Requirement + Test	Result - Remark	Verdict
<b>ANNEX F</b>	<b>(INFORMATIVE) USE OF THE KEEP OUT OF REACH OF CHILDREN SAFETY SIGN</b>		P
<b>F.1</b>	<b>General</b>		P
<b>F.2</b>	<b>Safety sign</b>		P
<b>F.3</b>	<b>Best practices for marking the packaging</b>		P
<b>F.4</b>	<b>Best practices for marking the cell</b>		P

TABLE 1 (clause 6.4.1 – 6.5.9)					P
Tests	Cell / battery type	Discharge state	Number of test sample	Test result	Verdict
A to E	Cells and single cell batteries	Undischarged	10		P
		Fully discharged	10		P
	Multi-cell batteries	Undischarged	4		N/A
		Fully discharged	4		N/A
F	Cells and single cell batteries	Undischarged	5		N/A
		Fully discharged	5		N/A
	Multi-cell batteries	Undischarged	5 component cells		N/A
		Fully discharged	5 component cells		N/A
G	Cells and single cell batteries	Undischarged	5		P
		Fully discharged	5		P
	Multi-cell batteries	Undischarged	5 component cells		N/A
		Fully discharged	5 component cells		N/A
H	Cells and single cell batteries	Fully discharged	10		P
	Multi-cell batteries	Fully discharged	10 component cells		N/A
I to K	Cells and single cell batteries	Undischarged	5		P
	Multi-cell batteries	Undischarged	5		N/A
L	Cells and single cell batteries	Undischarged	20		N/A
M	Cells and single cell batteries	50 % predischarged	20		N/A
		75 % predischarged	20		N/A
Supplementary information: NC: No short-circuit NE: No explosion NF: No fire NL: No leakage NR: No rupture NT: No excessive temperature rise NV: No venting					

6.4.1	TABLE: Test A: Altitude (Undischarged)			P
Cell. No.	Before test		After test	
	cell voltage (V)	cell weight (g)	cell voltage (V)	cell weight (g)
C1	3.32	2.382	3.32	2.382
C2	3.33	2.398	3.33	2.398
C3	3.33	2.372	3.33	2.372
C4	3.32	2.384	3.32	2.384
C5	3.33	2.373	3.33	2.373
C6	3.33	2.383	3.33	2.382
C7	3.33	2.391	3.33	2.390
C8	3.32	2.392	3.32	2.392
C9	3.33	2.375	3.32	2.375
C10	3.32	2.389	3.32	2.388

**Supplementary information:**  
 - No leakage, no venting, no short-circuit, no rupture, no explosion and no fire.

6.4.1	TABLE: Test A: Altitude (Fully discharged)			P
Cell. No.	Before test		After test	
	cell voltage (V)	cell weight (g)	cell voltage (V)	cell weight (g)
C1	2.31	2.378	2.31	2.378
C2	2.34	2.386	2.33	2.385
C3	2.31	2.385	2.31	2.385
C4	2.31	2.379	2.31	2.378
C5	2.32	2.388	2.32	2.388
C6	2.32	2.378	2.32	2.378
C7	2.29	2.382	2.29	2.382
C8	2.29	2.390	2.29	2.390
C9	2.30	2.376	2.30	2.376
C10	2.31	2.381	2.31	2.381

**Supplementary information:**  
 - No leakage, no venting, no short-circuit, no rupture, no explosion and no fire.

6.4.2	TABLE: Test B: Thermal cycling (Undischarged)			P
Cell. No.	Before test		After test	
	cell voltage (V)	cell weight (g)	cell voltage (V)	cell weight (g)
C1	3.32	2.382	3.31	2.381
C2	3.33	2.398	3.32	2.397
C3	3.33	2.372	3.32	2.371
C4	3.32	2.384	3.31	2.383
C5	3.33	2.373	3.32	2.373
C6	3.33	2.382	3.32	2.382
C7	3.33	2.390	3.32	2.390
C8	3.32	2.392	3.32	2.392
C9	3.32	2.375	3.31	2.375
C10	3.32	2.388	3.31	2.388

**Supplementary information:**  
 - No leakage, no venting, no short-circuit, no rupture, no explosion and no fire.

6.4.2	TABLE: Test B: Thermal cycling (Fully discharged)			P
Cell. No.	Before test		After test	
	cell voltage (V)	cell weight (g)	cell voltage (V)	cell weight (g)
C1	2.31	2.378	2.31	2.377
C2	2.33	2.385	2.32	2.385
C3	2.31	2.385	2.31	2.385
C4	2.31	2.378	2.30	2.378
C5	2.32	2.388	2.31	2.387
C6	2.32	2.378	2.31	2.377
C7	2.29	2.382	2.28	2.381
C8	2.29	2.390	2.29	2.389
C9	2.30	2.376	2.29	2.375
C10	2.31	2.381	2.30	2.380

**Supplementary information:**  
 - No leakage, no venting, no short-circuit, no rupture, no explosion and no fire.

6.4.3	TABLE: Test C: Vibration (Undischarged)			P
Cell. No.	Before test		After test	
	cell voltage (V)	cell weight (g)	cell voltage (V)	cell weight (g)
C1	3.31	2.381	3.31	2.381
C2	3.32	2.397	3.32	2.397
C3	3.32	2.371	3.32	2.371
C4	3.31	2.383	3.31	2.383
C5	3.32	2.373	3.32	2.373
C6	3.32	2.382	3.32	2.382
C7	3.32	2.390	3.32	2.390
C8	3.32	2.392	3.32	2.391
C9	3.31	2.375	3.31	2.374
C10	3.31	2.388	3.31	2.388

**Supplementary information:**  
- No leakage, no venting, no short-circuit, no rupture, no explosion and no fire.

6.4.3	TABLE: Test C: Vibration (Fully discharged)			P
Cell. No.	Before test		After test	
	cell voltage (V)	cell weight (g)	cell voltage (V)	cell weight (g)
C1	2.31	2.377	2.31	2.377
C2	2.32	2.385	2.32	2.385
C3	2.31	2.385	2.31	2.385
C4	2.30	2.378	2.30	2.378
C5	2.31	2.387	2.31	2.387
C6	2.31	2.377	2.31	2.377
C7	2.28	2.381	2.28	2.381
C8	2.29	2.389	2.29	2.388
C9	2.29	2.375	2.29	2.375
C10	2.30	2.380	2.30	2.380

**Supplementary information:**  
- No leakage, no venting, no short-circuit, no rupture, no explosion and no fire.

6.4.4	TABLE: Test D: Shock (Undischarged)			P
Cell. No.	Before test		After test	
	cell voltage (V)	cell weight (g)	cell voltage (V)	cell weight (g)
C1	3.31	2.381	3.31	2.381
C2	3.32	2.397	3.32	2.397
C3	3.32	2.371	3.32	2.371
C4	3.31	2.383	3.31	2.383
C5	3.32	2.373	3.32	2.373
C6	3.32	2.382	3.31	2.382
C7	3.32	2.390	3.32	2.390
C8	3.32	2.391	3.31	2.391
C9	3.31	2.374	3.31	2.374
C10	3.31	2.388	3.31	2.388

**Supplementary information:**  
- No leakage, no venting, no short-circuit, no rupture, no explosion and no fire.

6.4.4	TABLE: Test D: Shock (Fully discharged)			P
Cell. No.	Before test		After test	
	cell voltage (V)	cell weight (g)	cell voltage (V)	cell weight (g)
C1	2.31	2.377	2.31	2.376
C2	2.32	2.385	2.31	2.385
C3	2.31	2.385	2.31	2.384
C4	2.30	2.378	2.30	2.378
C5	2.31	2.387	2.31	2.386
C6	2.31	2.377	2.31	2.376
C7	2.28	2.381	2.28	2.381
C8	2.29	2.388	2.29	2.388
C9	2.29	2.375	2.28	2.375
C10	2.30	2.380	2.30	2.380

**Supplementary information:**  
- No leakage, no venting, no short-circuit, no rupture, no explosion and no fire.

6.5.1		TABLE: Test E: External short-circuit (Undischarged)				P
Cell No.	Ambient, (°C)	OCV at start of test, (Vdc)	Resistance of circuit, (mΩ)	Maximum case temperature rise- $\Delta T$ , (°C)	Results	
C1	55.6	3.32	86	81.6	P	
C2	55.6	3.33	84	78.8	P	
C3	55.6	3.33	88	80.0	P	
C4	55.6	3.32	80	81.1	P	
C5	55.6	3.31	85	80.7	P	
C6	55.5	3.32	85	77.8	P	
C7	55.5	3.33	82	76.0	P	
C8	55.5	3.33	85	75.6	P	
C9	55.5	3.32	82	82.2	P	
C10	55.5	3.32	85	81.9	P	

**Supplementary information:**  
- No excessive temperature rise (>170°C), no rupture, no explosion and no fire.

6.5.1		TABLE: Test E: External short-circuit (Fully discharged)				P
Cell No.	Ambient, (°C)	OCV at start of test, (Vdc)	Resistance of circuit, (mΩ)	Maximum case temperature rise- $\Delta T$ , (°C)	Results	
C1	55.4	2.30	82	72.3	P	
C2	55.4	2.30	81	74.6	P	
C3	55.4	2.29	87	75.4	P	
C4	55.4	2.30	84	75.5	P	
C5	55.4	2.29	81	73.7	P	
C6	55.7	2.29	79	73.0	P	
C7	55.7	2.31	82	74.0	P	
C8	55.7	2.29	80	71.7	P	
C9	55.7	2.30	85	75.4	P	
C10	55.7	2.31	78	73.1	P	

**Supplementary information:**  
- No excessive temperature rise (>170°C), no rupture, no explosion and no fire.



6.5.3		TABLE: Test G: Crush (Undischarged)			P
Cell No.	Ambient, (°C)	OCV at start of test, (Vdc)	Maximum case temperature rise $\Delta T$ , (°C)	Results	
C1	23.7	3.31	23.9	P	
C2	23.7	3.31	23.9	P	
C3	23.7	3.32	23.8	P	
C4	23.7	3.32	23.9	P	
C5	23.7	3.31	24.0	P	

**Supplementary information:**  
- No excessive temperature rise (>170°C), no explosion and no fire.

6.5.3		TABLE: Test G: Crush (Fully discharged)			P
Cell No.	Ambient, (°C)	OCV at start of test, (Vdc)	Maximum case temperature rise $\Delta T$ , (°C)	Results	
C1	23.6	2.28	23.8	P	
C2	23.6	2.29	23.7	P	
C3	23.6	2.29	23.9	P	
C4	23.6	2.29	23.8	P	
C5	23.6	2.28	23.8	P	

**Supplementary information:**  
- No excessive temperature rise (>170°C), no explosion and no fire.

6.5.4		TABLE: Test H: Forced discharge (Fully discharged)			P
Cell No.	OCV at start of test, (Vdc)	Max. discharge current, (A)	Test duration, (Hours)	Results	
C1	2.31	0.00042	1.5	P	
C2	2.30	0.00042	1.5	P	
C3	2.29	0.00042	1.5	P	
C4	2.29	0.00042	1.5	P	
C5	2.31	0.00042	1.5	P	
C6	2.32	0.00042	1.5	P	
C7	2.30	0.00042	1.5	P	
C8	2.29	0.00042	1.5	P	
C9	2.29	0.00042	1.5	P	
C10	2.31	0.00042	1.5	P	

**Supplementary information:**  
- No explosion and no fire.

6.5.5		TABLE: Test I: Abnormal charging (Undischarged)			P
Cell No.	OCV at start of test, (Vdc)	Max. charge current, (A)	Test duration, (Hours)	Results	
C1	3.32	0.00126	297.6	P	
C2	3.33	0.00126	297.6	P	
C3	3.32	0.00126	297.6	P	
C4	3.33	0.00126	297.6	P	
C5	3.32	0.00126	297.6	P	
<b>Supplementary information:</b> - No explosion and no fire.					

6.5.6		TABLE: Test J: Free fall (Undischarged)			P
Cell No.	Before test	After test		Test results	
	cell voltage (V)	cell voltage (V)			
C1	3.32	3.32		P	
C2	3.31	3.31		P	
C3	3.32	3.32		P	
C4	3.32	3.32		P	
C5	3.32	3.32		P	
<b>Supplementary information:</b> - No venting, no explosion and no fire.					

6.5.7		TABLE: Test K: Thermal abuse (Undischarged)			P
Cell No.	Before test	After test		Test results	
	cell voltage (V)	cell voltage (V)			
C1	3.33	3.25		P	
C2	3.32	3.24		P	
C3	3.32	3.24		P	
C4	3.32	3.26		P	
C5	3.32	3.24		P	
<b>Supplementary information:</b> - No explosion and no fire.					



6.5.8	Test L: Incorrect installation (Undischarged)				N/A
Cell No.	OCV at start of test, (Vdc)	Resistance of circuit, (m $\Omega$ )	Maximum case temperature rise- $\Delta T$ , ( $^{\circ}$ C)	Results	

**Supplementary information:**  
- No explosion and no fire.

6.5.9	Test M: Overdischarge (Undischarged) (50% predischarged)				N/A
Cell No.	Ambient, ( $^{\circ}$ C)	OCV at start of test, (Vdc)	Resistance of circuit, (m $\Omega$ )	Maximum case temperature, ( $^{\circ}$ C)	Results

**Supplementary information**  
- No explosion and no fire.

6.5.9	Test M: Overdischarge (Undischarged) (75% predischarged)				N/A
Cell No.	Ambient, ( $^{\circ}$ C)	OCV at start of test, (Vdc)	Resistance of circuit, (m $\Omega$ )	Maximum case temperature, ( $^{\circ}$ C)	Results

**Supplementary information**  
- No explosion and no fire.

-- End of Report --

# Attachment 1



## Photo Documentation

Product: 3V Coin Cell

Type Designation: CR2025

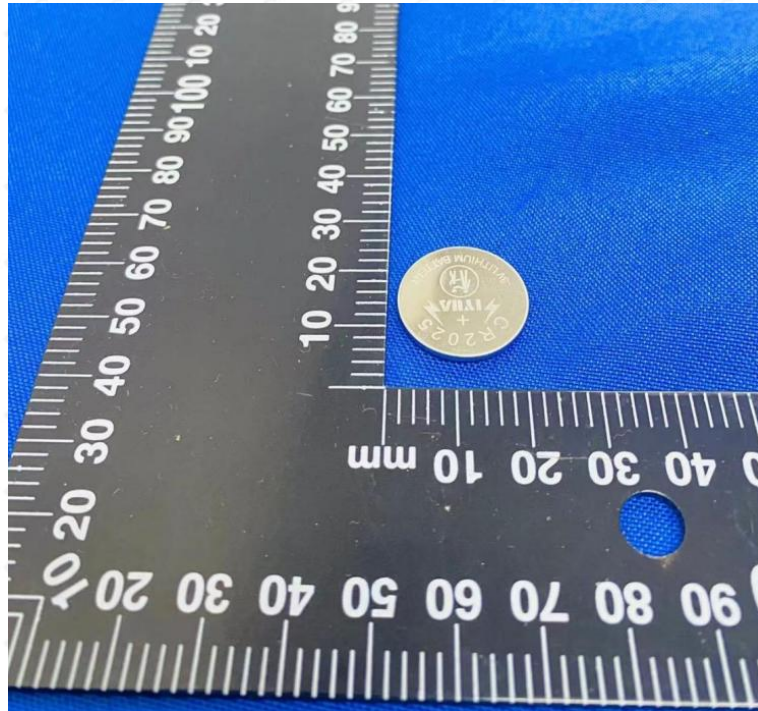


Figure 1 Front view of cell

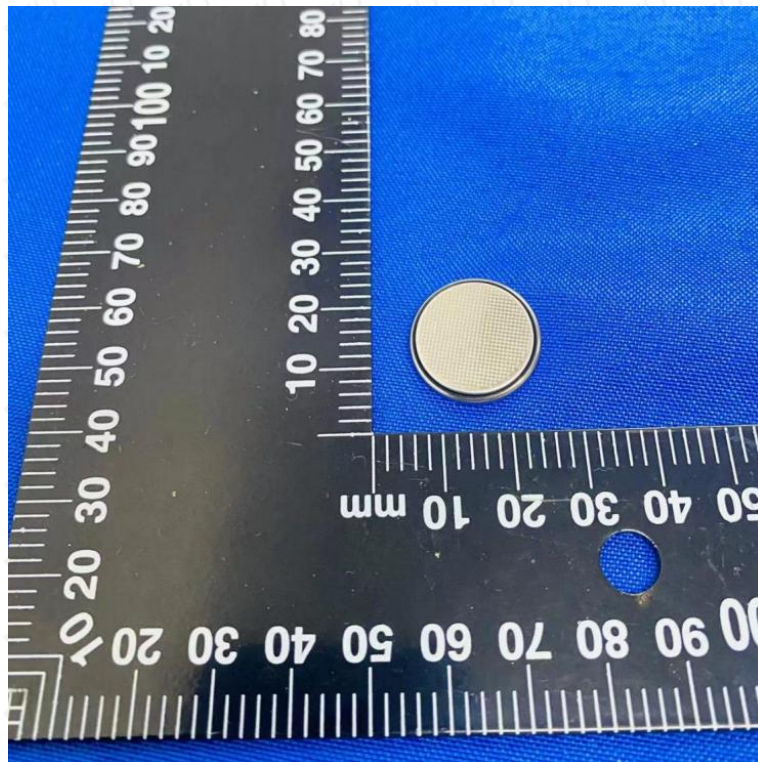


Figure 2 Back view of cell