



Test Report

Report No. A226020536510502

Page 1 of 20

Company Name KINGSIGNAL TECHNOLOGY CO., LTD
shown on Report

Address 1ST FLOOR, 19TH FLOOR, JINXINUO NO. 1 WORKSHOP, NO. 50, BAOLONG
2ND ROAD, BAOLONG COMMUNITY, BAOLONG STREET, LONGGANG
DISTRICT, SHENZHEN

The following sample(s) and sample information was/were submitted and identified by/on the behalf of the applicant

Sample Name RG coaxial cable
Sample Received Date Mar. 23, 2026
Testing Period Mar. 23, 2026 to Apr. 2, 2026

Test Requested As specified by client, to test Lead (Pb), Cadmium (Cd), Mercury (Hg), Hexavalent Chromium (Cr(VI)), Polybrominated Biphenyls (PBBs), Polybrominated Diphenyl Ethers (PBDEs), Phthalates (DBP, BBP, DEHP, DIBP) in the submitted sample(s).

Test Method/Test Result(s) Please refer to the following page(s).



Approved by

Date

Apr. 3, 2026

Vic Xu
Lab Manager

No. V597087864

Centre Testing International (Guangzhou) Co., Ltd.
Inspection & Testing Services
No.203, Bohua 1st Road, Huangpu District, Guangzhou, Guangdong, China

Test Report

Report No. A226020536510502

Page 2 of 20

CTI Sample ID	Reference Report No. - CTI Sample ID
012	A226020536510501-002
017	A226020536510501-003
028	A226020536510501-007

Remark:

The samples with the reference information in the table above are non-tested in this report. Test results and the photos of the " CTI Sample ID " column reference to " Reference Report No. - CTI Sample ID " column.

Test Report

Report No. A226020536510502

Page 3 of 20

Test Method

Tested Item(s)	Test Method	Measured Equipment(s)
Lead (Pb)	IEC 62321-5:2013	ICP-OES
Cadmium (Cd)	IEC 62321-5:2013	ICP-OES
Mercury (Hg)	IEC 62321-4:2013+AMD1:2017 CSV	ICP-OES
Hexavalent Chromium (Cr(VI))	IEC 62321-7-1:2015	UV-Vis
	IEC 62321-7-2:2017 and/or determination of Total Chromium by IEC 62321-5:2013	UV-Vis/ICP-OES
Polybrominated Biphenyls (PBBs)	IEC 62321-12:2023	GC-MS
Polybrominated Diphenyl Ethers (PBDEs)	IEC 62321-12:2023	GC-MS
Phthalates (DBP, BBP, DEHP, DIBP)	IEC 62321-12:2023	GC-MS

Test Report

Report No. A226020536510502

Page 4 of 20

Test Result(s)

Tested Item(s)	Result			MDL
	012	013	014	
Lead (Pb)	N.D.	N.D.	N.D.	2 mg/kg
Cadmium (Cd)	N.D.	N.D.	N.D.	2 mg/kg
Mercury (Hg)	N.D.	N.D.	N.D.	2 mg/kg
Hexavalent Chromium (Cr(VI))	N.D.▼	N.D.▼	N.D.▼	0.10 µg/cm ² (LOQ)
	--	--	--	8 mg/kg

Tested Item(s)	Result			MDL
	015	016	017	
Lead (Pb)	N.D.	N.D.	N.D.	2 mg/kg
Cadmium (Cd)	N.D.	N.D.	N.D.	2 mg/kg
Mercury (Hg)	N.D.	N.D.	N.D.	2 mg/kg
Hexavalent Chromium (Cr(VI))	N.D.▼	N.D.▼	--	0.10 µg/cm ² (LOQ)
	--	--	N.D.	8 mg/kg

Tested Item(s)	Result			MDL
	018	019	020	
Lead (Pb)	N.D.	N.D.	N.D.	2 mg/kg
Cadmium (Cd)	N.D.	N.D.	N.D.	2 mg/kg
Mercury (Hg)	N.D.	N.D.	N.D.	2 mg/kg
Hexavalent Chromium (Cr(VI))	--	--	--	0.10 µg/cm ² (LOQ)
	N.D.	N.D.	N.D.	8 mg/kg

Tested Item(s)	Result			MDL
	021	022	023	
Lead (Pb)	N.D.	N.D.	N.D.	2 mg/kg
Cadmium (Cd)	N.D.	N.D.	N.D.	2 mg/kg
Mercury (Hg)	N.D.	N.D.	N.D.	2 mg/kg
Hexavalent Chromium (Cr(VI))	--	--	N.D.▼	0.10 µg/cm ² (LOQ)
	N.D.	N.D.	--	8 mg/kg

Test Report

Report No. A226020536510502

Page 5 of 20

Tested Item(s)	Result			MDL
	024	025	026	
Lead (Pb)	N.D.	N.D.	N.D.	2 mg/kg
Cadmium (Cd)	N.D.	N.D.	N.D.	2 mg/kg
Mercury (Hg)	N.D.	N.D.	N.D.	2 mg/kg
Hexavalent Chromium (Cr(VI))	N.D.▼	N.D.▼	N.D.▼	0.10 µg/cm ² (LOQ)
	--	--	--	8 mg/kg

Tested Item(s)	Result			MDL
	027	028	029	
Lead (Pb)	N.D.	N.D.	N.D.	2 mg/kg
Cadmium (Cd)	N.D.	N.D.	N.D.	2 mg/kg
Mercury (Hg)	N.D.	N.D.	N.D.	2 mg/kg
Hexavalent Chromium (Cr(VI))	N.D.▼	--	--	0.10 µg/cm ² (LOQ)
	--	N.D.	N.D.	8 mg/kg

Tested Item(s)	Result			MDL
	030	031	032	
Lead (Pb)	N.D.	N.D.	N.D.	2 mg/kg
Cadmium (Cd)	N.D.	N.D.	N.D.	2 mg/kg
Mercury (Hg)	N.D.	N.D.	N.D.	2 mg/kg
Hexavalent Chromium (Cr(VI))	--	--	--	0.10 µg/cm ² (LOQ)
	N.D.	N.D.	N.D.	8 mg/kg

Tested Item(s)	Result			MDL
	033	034	035	
Lead (Pb)	N.D.	N.D.	N.D.	2 mg/kg
Cadmium (Cd)	N.D.	N.D.	N.D.	2 mg/kg
Mercury (Hg)	N.D.	N.D.	N.D.	2 mg/kg
Hexavalent Chromium (Cr(VI))	--	--	--	0.10 µg/cm ² (LOQ)
	N.D.	N.D.	N.D.	8 mg/kg

Test Report

Report No. A226020536510502

Page 6 of 20

Tested Item(s)	Result			MDL
	017	018	019	
Polybrominated Biphenyls (PBBs)				
Monobromobiphenyl	N.D.	N.D.	N.D.	25 mg/kg
Dibromobiphenyl	N.D.	N.D.	N.D.	25 mg/kg
Tribromobiphenyl	N.D.	N.D.	N.D.	25 mg/kg
Tetrabromobiphenyl	N.D.	N.D.	N.D.	25 mg/kg
Pentabromobiphenyl	N.D.	N.D.	N.D.	25 mg/kg
Hexabromobiphenyl	N.D.	N.D.	N.D.	25 mg/kg
Heptabromobiphenyl	N.D.	N.D.	N.D.	25 mg/kg
Octabromobiphenyl	N.D.	N.D.	N.D.	25 mg/kg
Nonabromobiphenyl	N.D.	N.D.	N.D.	25 mg/kg
Decabromobiphenyl	N.D.	N.D.	N.D.	25 mg/kg

Tested Item(s)	Result			MDL
	020	021	022	
Polybrominated Biphenyls (PBBs)				
Monobromobiphenyl	N.D.	N.D.	N.D.	25 mg/kg
Dibromobiphenyl	N.D.	N.D.	N.D.	25 mg/kg
Tribromobiphenyl	N.D.	N.D.	N.D.	25 mg/kg
Tetrabromobiphenyl	N.D.	N.D.	N.D.	25 mg/kg
Pentabromobiphenyl	N.D.	N.D.	N.D.	25 mg/kg
Hexabromobiphenyl	N.D.	N.D.	N.D.	25 mg/kg
Heptabromobiphenyl	N.D.	N.D.	N.D.	25 mg/kg
Octabromobiphenyl	N.D.	N.D.	N.D.	25 mg/kg
Nonabromobiphenyl	N.D.	N.D.	N.D.	25 mg/kg
Decabromobiphenyl	N.D.	N.D.	N.D.	25 mg/kg

Test Report

Report No. A226020536510502

Page 7 of 20

Tested Item(s)	Result			MDL
	028	029	030	
Polybrominated Biphenyls (PBBs)				
Monobromobiphenyl	N.D.	N.D.	N.D.	25 mg/kg
Dibromobiphenyl	N.D.	N.D.	N.D.	25 mg/kg
Tribromobiphenyl	N.D.	N.D.	N.D.	25 mg/kg
Tetrabromobiphenyl	N.D.	N.D.	N.D.	25 mg/kg
Pentabromobiphenyl	N.D.	N.D.	N.D.	25 mg/kg
Hexabromobiphenyl	N.D.	N.D.	N.D.	25 mg/kg
Heptabromobiphenyl	N.D.	N.D.	N.D.	25 mg/kg
Octabromobiphenyl	N.D.	N.D.	N.D.	25 mg/kg
Nonabromobiphenyl	N.D.	N.D.	N.D.	25 mg/kg
Decabromobiphenyl	N.D.	N.D.	N.D.	25 mg/kg

Tested Item(s)	Result			MDL
	031	032	033	
Polybrominated Biphenyls (PBBs)				
Monobromobiphenyl	N.D.	N.D.	N.D.	25 mg/kg
Dibromobiphenyl	N.D.	N.D.	N.D.	25 mg/kg
Tribromobiphenyl	N.D.	N.D.	N.D.	25 mg/kg
Tetrabromobiphenyl	N.D.	N.D.	N.D.	25 mg/kg
Pentabromobiphenyl	N.D.	N.D.	N.D.	25 mg/kg
Hexabromobiphenyl	N.D.	N.D.	N.D.	25 mg/kg
Heptabromobiphenyl	N.D.	N.D.	N.D.	25 mg/kg
Octabromobiphenyl	N.D.	N.D.	N.D.	25 mg/kg
Nonabromobiphenyl	N.D.	N.D.	N.D.	25 mg/kg
Decabromobiphenyl	N.D.	N.D.	N.D.	25 mg/kg

Test Report

Report No. A226020536510502

Page 8 of 20

Tested Item(s)	Result		MDL
	034	035	
Polybrominated Biphenyls (PBBs)			
Monobromobiphenyl	N.D.	N.D.	25 mg/kg
Dibromobiphenyl	N.D.	N.D.	25 mg/kg
Tribromobiphenyl	N.D.	N.D.	25 mg/kg
Tetrabromobiphenyl	N.D.	N.D.	25 mg/kg
Pentabromobiphenyl	N.D.	N.D.	25 mg/kg
Hexabromobiphenyl	N.D.	N.D.	25 mg/kg
Heptabromobiphenyl	N.D.	N.D.	25 mg/kg
Octabromobiphenyl	N.D.	N.D.	25 mg/kg
Nonabromobiphenyl	N.D.	N.D.	25 mg/kg
Decabromobiphenyl	N.D.	N.D.	25 mg/kg

Tested Item(s)	Result			MDL
	017	018	019	
Polybrominated Diphenyl Ethers (PBDEs)				
Monobromodiphenyl ether	N.D.	N.D.	N.D.	25 mg/kg
Dibromodiphenyl ether	N.D.	N.D.	N.D.	25 mg/kg
Tribromodiphenyl ether	N.D.	N.D.	N.D.	25 mg/kg
Tetrabromodiphenyl ether	N.D.	N.D.	N.D.	25 mg/kg
Pentabromodiphenyl ether	N.D.	N.D.	N.D.	25 mg/kg
Hexabromodiphenyl ether	N.D.	N.D.	N.D.	25 mg/kg
Heptabromodiphenyl ether	N.D.	N.D.	N.D.	25 mg/kg
Octabromodiphenyl ether	N.D.	N.D.	N.D.	25 mg/kg
Nonabromodiphenyl ether	N.D.	N.D.	N.D.	25 mg/kg
Decabromodiphenyl ether	N.D.	N.D.	N.D.	25 mg/kg

Test Report

Report No. A226020536510502

Page 9 of 20

Tested Item(s)	Result			MDL
	020	021	022	
Polybrominated Diphenyl Ethers (PBDEs)				
Monobromodiphenyl ether	N.D.	N.D.	N.D.	25 mg/kg
Dibromodiphenyl ether	N.D.	N.D.	N.D.	25 mg/kg
Tribromodiphenyl ether	N.D.	N.D.	N.D.	25 mg/kg
Tetrabromodiphenyl ether	N.D.	N.D.	N.D.	25 mg/kg
Pentabromodiphenyl ether	N.D.	N.D.	N.D.	25 mg/kg
Hexabromodiphenyl ether	N.D.	N.D.	N.D.	25 mg/kg
Heptabromodiphenyl ether	N.D.	N.D.	N.D.	25 mg/kg
Octabromodiphenyl ether	N.D.	N.D.	N.D.	25 mg/kg
Nonabromodiphenyl ether	N.D.	N.D.	N.D.	25 mg/kg
Decabromodiphenyl ether	N.D.	N.D.	N.D.	25 mg/kg

Tested Item(s)	Result			MDL
	028	029	030	
Polybrominated Diphenyl Ethers (PBDEs)				
Monobromodiphenyl ether	N.D.	N.D.	N.D.	25 mg/kg
Dibromodiphenyl ether	N.D.	N.D.	N.D.	25 mg/kg
Tribromodiphenyl ether	N.D.	N.D.	N.D.	25 mg/kg
Tetrabromodiphenyl ether	N.D.	N.D.	N.D.	25 mg/kg
Pentabromodiphenyl ether	N.D.	N.D.	N.D.	25 mg/kg
Hexabromodiphenyl ether	N.D.	N.D.	N.D.	25 mg/kg
Heptabromodiphenyl ether	N.D.	N.D.	N.D.	25 mg/kg
Octabromodiphenyl ether	N.D.	N.D.	N.D.	25 mg/kg
Nonabromodiphenyl ether	N.D.	N.D.	N.D.	25 mg/kg
Decabromodiphenyl ether	N.D.	N.D.	N.D.	25 mg/kg

Test Report

Report No. A226020536510502

Page 10 of 20

Tested Item(s)	Result			MDL
	031	032	033	
Polybrominated Diphenyl Ethers (PBDEs)				
Monobromodiphenyl ether	N.D.	N.D.	N.D.	25 mg/kg
Dibromodiphenyl ether	N.D.	N.D.	N.D.	25 mg/kg
Tribromodiphenyl ether	N.D.	N.D.	N.D.	25 mg/kg
Tetrabromodiphenyl ether	N.D.	N.D.	N.D.	25 mg/kg
Pentabromodiphenyl ether	N.D.	N.D.	N.D.	25 mg/kg
Hexabromodiphenyl ether	N.D.	N.D.	N.D.	25 mg/kg
Heptabromodiphenyl ether	N.D.	N.D.	N.D.	25 mg/kg
Octabromodiphenyl ether	N.D.	N.D.	N.D.	25 mg/kg
Nonabromodiphenyl ether	N.D.	N.D.	N.D.	25 mg/kg
Decabromodiphenyl ether	N.D.	N.D.	N.D.	25 mg/kg

Tested Item(s)	Result		MDL
	034	035	
Polybrominated Diphenyl Ethers (PBDEs)			
Monobromodiphenyl ether	N.D.	N.D.	25 mg/kg
Dibromodiphenyl ether	N.D.	N.D.	25 mg/kg
Tribromodiphenyl ether	N.D.	N.D.	25 mg/kg
Tetrabromodiphenyl ether	N.D.	N.D.	25 mg/kg
Pentabromodiphenyl ether	N.D.	N.D.	25 mg/kg
Hexabromodiphenyl ether	N.D.	N.D.	25 mg/kg
Heptabromodiphenyl ether	N.D.	N.D.	25 mg/kg
Octabromodiphenyl ether	N.D.	N.D.	25 mg/kg
Nonabromodiphenyl ether	N.D.	N.D.	25 mg/kg
Decabromodiphenyl ether	N.D.	N.D.	25 mg/kg

Test Report

Report No. A226020536510502

Page 11 of 20

Tested Item(s)	Result			MDL
	017	018	019	
Phthalates (DBP, BBP, DEHP, DIBP)				
Dibutyl phthalate (DBP) CAS#:84-74-2	N.D.	N.D.	N.D.	50 mg/kg
Butyl benzyl phthalate (BBP) CAS#:85-68-7	N.D.	N.D.	N.D.	50 mg/kg
Di-(2-ethylhexyl) phthalate (DEHP) CAS#:117-81-7	N.D.	N.D.	N.D.	50 mg/kg
Diisobutyl phthalate (DIBP) CAS#:84-69-5	N.D.	N.D.	N.D.	50 mg/kg

Tested Item(s)	Result			MDL
	020	021	022	
Phthalates (DBP, BBP, DEHP, DIBP)				
Dibutyl phthalate (DBP) CAS#:84-74-2	N.D.	N.D.	N.D.	50 mg/kg
Butyl benzyl phthalate (BBP) CAS#:85-68-7	N.D.	N.D.	N.D.	50 mg/kg
Di-(2-ethylhexyl) phthalate (DEHP) CAS#:117-81-7	N.D.	N.D.	N.D.	50 mg/kg
Diisobutyl phthalate (DIBP) CAS#:84-69-5	N.D.	N.D.	N.D.	50 mg/kg

Tested Item(s)	Result			MDL
	028	029	030	
Phthalates (DBP, BBP, DEHP, DIBP)				
Dibutyl phthalate (DBP) CAS#:84-74-2	N.D.	N.D.	N.D.	50 mg/kg
Butyl benzyl phthalate (BBP) CAS#:85-68-7	N.D.	N.D.	N.D.	50 mg/kg
Di-(2-ethylhexyl) phthalate (DEHP) CAS#:117-81-7	N.D.	N.D.	N.D.	50 mg/kg
Diisobutyl phthalate (DIBP) CAS#:84-69-5	N.D.	N.D.	N.D.	50 mg/kg

Test Report

Report No. A226020536510502

Page 12 of 20

Tested Item(s)	Result			MDL
	031	032	033	
Phthalates (DBP, BBP, DEHP, DIBP)				
Dibutyl phthalate (DBP) CAS#:84-74-2	N.D.	N.D.	N.D.	50 mg/kg
Butyl benzyl phthalate (BBP) CAS#:85-68-7	N.D.	N.D.	N.D.	50 mg/kg
Di-(2-ethylhexyl) phthalate (DEHP) CAS#:117-81-7	N.D.	N.D.	N.D.	50 mg/kg
Diisobutyl phthalate (DIBP) CAS#:84-69-5	N.D.	N.D.	N.D.	50 mg/kg

Tested Item(s)	Result		MDL
	034	035	
Phthalates (DBP, BBP, DEHP, DIBP)			
Dibutyl phthalate (DBP) CAS#:84-74-2	N.D.	N.D.	50 mg/kg
Butyl benzyl phthalate (BBP) CAS#:85-68-7	N.D.	N.D.	50 mg/kg
Di-(2-ethylhexyl) phthalate (DEHP) CAS#:117-81-7	N.D.	N.D.	50 mg/kg
Diisobutyl phthalate (DIBP) CAS#:84-69-5	N.D.	N.D.	50 mg/kg

Sample/Part Description

No.	CTI Sample ID	Description
1	012	Silvery metal wire
2	013	Silvery metal wire
3	014	Silvery metal wire
4	015	Cupreous metal wire core
5	016	Cupreous metal wire core
6	017	White plastic
7	018	White plastic
8	019	White plastic
9	020	Transparent plastic
10	021	Transparent plastic
11	022	Silvery/blue foil
12	023	Silvery/cupreous metal
13	024	Silvery white metal

Test Report

Report No. A226020536510502

Page 13 of 20

14	025	Silvery metal
15	026	Silvery metal
16	027	Cupreous metal foil
17	028	Blue wire jacket with black printing
18	029	Black wire jacket with grey printing
19	030	Black wire jacket with grey printing
20	031	Black wire jacket with grey printing
21	032	Black plastic grains
22	033	Black wire jacket with grey printing
23	034	Black wire jacket
24	035	Mixed test, light brown and black plastic grains [#]

Remark: -The sample(s) had been dissolved totally tested for Lead, Cadmium, Mercury.
-[#]As specified by client, the test was conducted by mixing several samples together. The result(s) shown on this report may be different from the content of any homogeneous material.
-According to the client's statement, the reasons for the multiple information in the "sample information" of this report may include (but are not limited to): supplying to different buyers, being sold to different countries or regions, former names, or mixtures of several substances.
-MDL = Method Detection Limit
-N.D. = Not Detected (<MDL or LOQ)
-mg/kg = ppm = parts per million
-LOQ = Limit of Quantification, The LOQ of Hexavalent chromium is 0.10 $\mu\text{g}/\text{cm}^2$
- \blacktriangledown The sample is negative for Cr(VI) – The Cr(VI) concentration is below 0.10 $\mu\text{g}/\text{cm}^2$. The coating is considered a non-Cr(VI) based coating. Information on storage conditions and production date of the tested sample is unavailable and thus Cr(VI) results represent status of the sample at the time of testing.

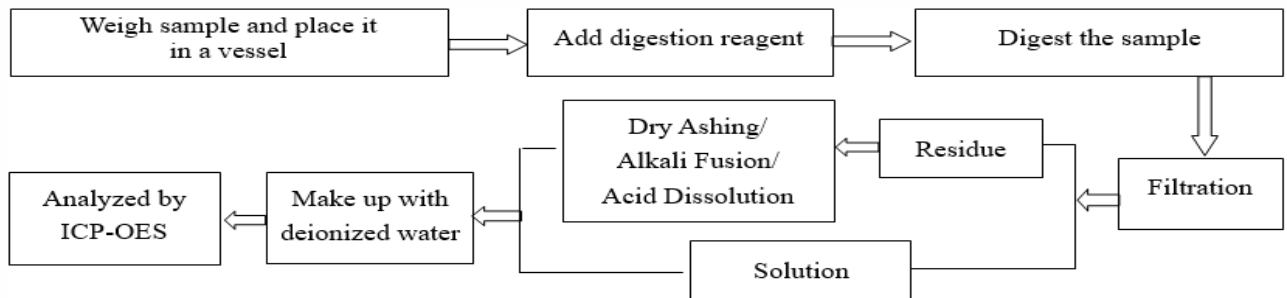
Test Report

Report No. A226020536510502

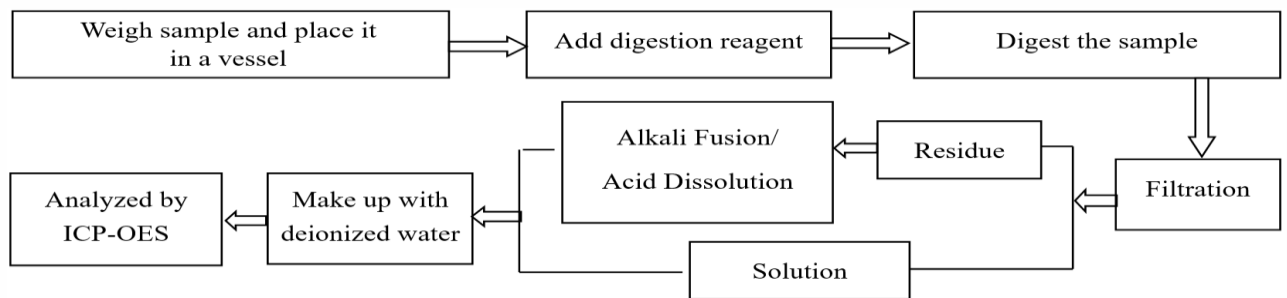
Page 14 of 20

Test Process

1. Lead (Pb), Cadmium (Cd), Chromium(Cr)

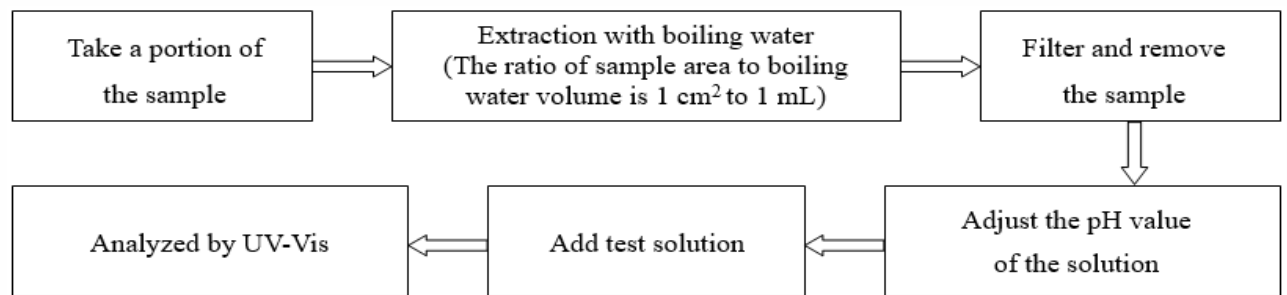


2. Mercury (Hg)

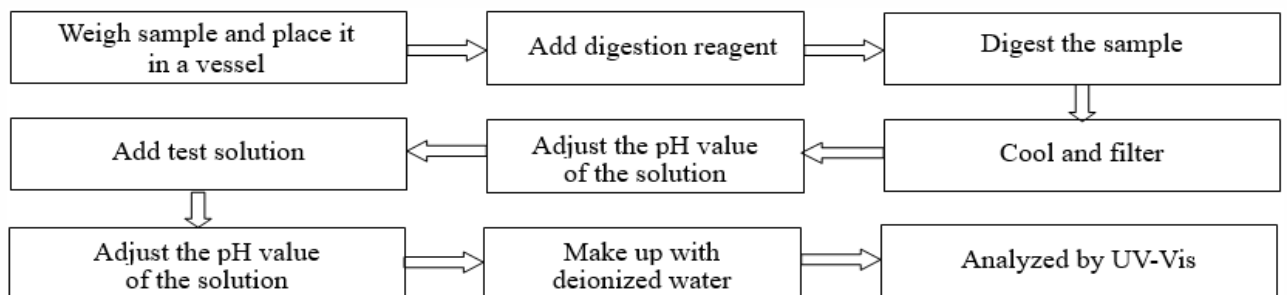


3. Hexavalent Chromium (Cr(VI))

(1) IEC 62321-7-1:2015



(2) IEC 62321-7-2:2017

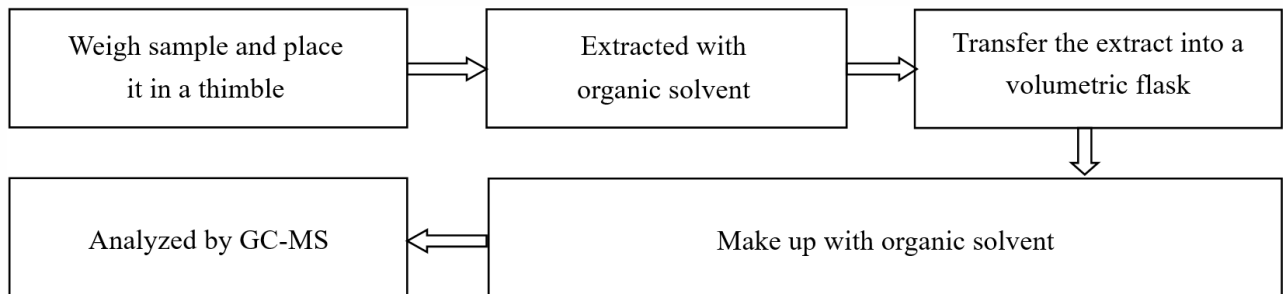


Test Report

Report No. A226020536510502

Page 15 of 20

4. Polybrominated Biphenyls (PBBs), Polybrominated Diphenyl Ethers (PBDEs), Phthalates (DBP, BBP, DEHP, DIBP)



Test Report

Report No. A226020536510502

Page 16 of 20

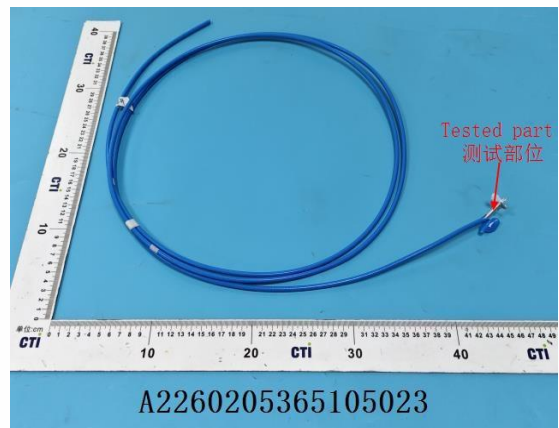
Photo(s) of the sample(s)



Test Report

Report No. A226020536510502

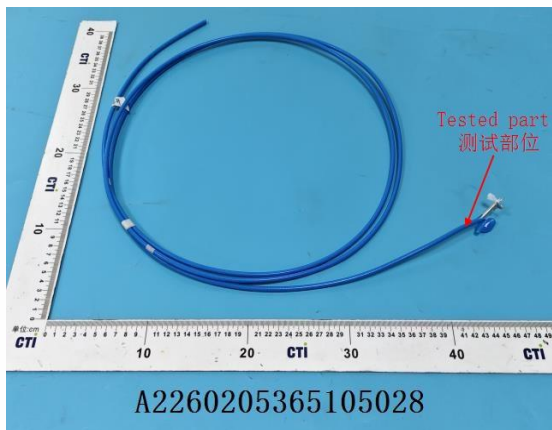
Page 17 of 20



Test Report

Report No. A226020536510502

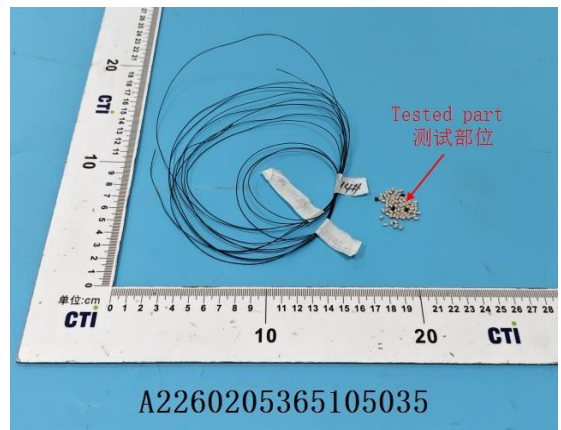
Page 18 of 20



Test Report

Report No. A226020536510502

Page 19 of 20



Test Report

Report No. A226020536510502

Page 20 of 20

Statement:

1. This report is considered invalid without approved signature, special seal and the seal on the perforation;
2. The Company Name shown on Report and Address, the sample(s) and sample information was/were provided by the applicant who should be responsible for the authenticity which CTI hasn't verified;
3. The result(s) shown in this report refer(s) only to the sample(s) tested;
4. Unless otherwise stated, the decision rule for conformity reporting is based on Binary Statement for Simple Acceptance Rule (w=0) stated in ILAC-G8:09/2019 / CNAS-GL015:2022;
5. Without written approval of CTI, this report can't be reproduced except in full;
6. In case of any discrepancy between the English version and Chinese version of the reports (if generated), the Chinese version shall prevail.

*** End of Report ***

Appendix

Client Reference Information

Sample Name	Sample Specification	Sample Structure	Homogeneous Material	Applicable Specifications
RG coaxial cable	670-141 KSR100 KS195 KSR400 RG58LL 670-180LL RG142 RTK048 1.13 1.37 Peek	Inner conductor	Silver plated copper-clad steel	RG Series: RG6、RG8、RG11、RG58、RG59、RG62、RG142、RG174、RG178、RG178D、Tri-178、Tri-086(TRI-RG405)、RG179、RG179D、RG180、RG213、RG214、RG217、RG223、RG302、RG303、RG304、RG316、RG316D、RG393、RG400、RG174X、RG187、RG188、RG196、RG216、RG217、RG85、RG62 小同轴 Series: Mic-1.13、Mic-1.13(低损)、Mic-1.37、Mic-1.37(低损)、Mic-0.64、Mic-0.64(低损)、Mic-0.81、Mic-0.81(低损)、Mic-1.32、Mic-1.32(低损)、Peek
			Tin plated copper	
			Silver plated copper	
			Bare copper	
		Insulation	Copper-clad aluminum alloy	
			PTFE	
			FPE	
			FPP	
		Outer conductor(braided)	PP	
			PE	
			Aluminum foil	
			Tin plated	
			Silver-plated copper	
			Aluminum-magnesium alloy	
		Jacket	Aluminum-magnesium wire	
			Copper foil	
			FEP	
			PE	
			PVC	
			LSZH	
			TPE	
PUR				
TPU				
Peek				

Statement:

1. The Appendix Information was/were provided by the applicant who should be responsible for the authenticity which CTI hasn't verified.
2. The Appendix Information is/are the supplement(s) for the Report A226020536510502.