

Client Name: TAIZHOU TONHE FLOW CONTROL CO.,LTD

Client Address: #3 BUILDING, XINSHUN SME PIONEER PARK, JIANGKOU STR. HUANGYAN 318020, TAIZHOU,ZHEJIANG, CHINA

Sample Name: Motorized Valve

Tested Basic Model No.: A150-M-0-B-AC24V&DC12-24V

Tested Extended Model No.: A150-T-0-B-CR202-AC24&DC12-24V ; A150-T-0-B-CR202-AC110-230V

The above sample(s) and information were provided by the client.

SGS Job No.: NP23-001591

Sample Receiving Date: May 06, 2023

Verification Period: May 06, 2023 ~ Jun 25, 2023

Verification Requested: With reference to RoHS Directive (EU) 2015/863 amending 2011/65/EU.

Verification Method(s): Please refer to next page(s).

Verification Result(s): Please refer to next page(s).

Test Result Summary:

Test Items	Conclusion
EU RoHS Directive (EU) 2015/863 amending Annex II to Directive 2011/65/EU- Lead, Mercury, Cadmium, Hexavalent chromium, Polybrominated biphenyls (PBBs), Polybrominated diphenyl ethers (PBDEs), Bis(2-ethylhexyl) phthalate (DEHP), Butyl benzyl phthalate (BBP), Dibutyl phthalate (DBP) and Diisobutyl phthalate (DIBP)	Pass

Signed for and on behalf of
SGS-CSTC Standards Technical Services Co., Ltd. Ningbo Branch

Damon Li

Damon Li
Approved Signatory



Unless otherwise agreed in writing, this document is issued by the Company subject to its General Conditions of Service printed overleaf, available on request or accessible at <http://www.sgs.com/en/Terms-and-Conditions.aspx> and, for electronic format documents, subject to Terms and Conditions for Electronic Documents at <http://www.sgs.com/en/Terms-and-Conditions/Terms-e-Document.aspx>. Attention is drawn to the limitation of liability, indemnification and jurisdiction issues defined therein. Any holder of this document is advised that information contained hereon reflects the Company's findings at the time of its intervention only and within the limits of Client's instructions, if any. The Company's sole responsibility is to its Client and this document does not exonerate parties to a transaction from exercising all their rights and obligations under the transaction documents. This document cannot be reproduced except in full, without prior written approval of the Company. Any unauthorized alteration, forgery or falsification of the content or appearance of this document is unlawful and offenders may be prosecuted to the fullest extent of the law. Unless otherwise stated the results shown in this test report refer only to the sample(s) tested.
Attention: To check the authenticity of testing /inspection report & certificate, please contact us at telephone: (86-755) 8307 1443, or email: CN.Doccheck@sgs.com

Photo of Submitted Sample



Unless otherwise agreed in writing, this document is issued by the Company subject to its General Conditions of Service printed overleaf, available on request or accessible at <http://www.sgs.com/en/Terms-and-Conditions.aspx> and, for electronic format documents, subject to Terms and Conditions for Electronic Documents at <http://www.sgs.com/en/Terms-and-Conditions/Terms-e-Document.aspx>. Attention is drawn to the limitation of liability, indemnification and jurisdiction issues defined therein. Any holder of this document is advised that information contained hereon reflects the Company's findings at the time of its intervention only and within the limits of Client's instructions, if any. The Company's sole responsibility is to its Client and this document does not exonerate parties to a transaction from exercising all their rights and obligations under the transaction documents. This document cannot be reproduced except in full, without prior written approval of the Company. Any unauthorized alteration, forgery or falsification of the content or appearance of this document is unlawful and offenders may be prosecuted to the fullest extent of the law. Unless otherwise stated the results shown in this test report refer only to the sample(s) tested.

Attention: To check the authenticity of testing /inspection report & certificate, please contact us at telephone: (86-755) 8307 1443, or email: CN.Doccheck@sgs.com



Verification Method(s):

1. With reference to IEC 62321-2:2021, disassembly and disjointment were performed for the submitted samples.
2. With reference to IEC 62321-1:2013, tests were performed for the samples indicated by the photos in this report.
 - (1) With reference to IEC 62321-3-1:2013, screening by EDXRF spectroscopy.
 - (2) Wet chemical test method: With reference to IEC 62321-4:2013+A1:2017, IEC62321-5:2013, IEC 62321-7-1:2015, IEC 62321-7-2:2017, ISO 17075-1:2017, IEC 62321-6:2015 and IEC62321-8:2017 , analyzed by ICP-OES,UV-Vis and GC-MS.



Unless otherwise agreed in writing, this document is issued by the Company subject to its General Conditions of Service printed overleaf, available on request or accessible at <http://www.sgs.com/en/Terms-and-Conditions.aspx> and, for electronic format documents, subject to Terms and Conditions for Electronic Documents at <http://www.sgs.com/en/Terms-and-Conditions/Terms-e-Document.aspx>. Attention is drawn to the limitation of liability, indemnification and jurisdiction issues defined therein. Any holder of this document is advised that information contained hereon reflects the Company's findings at the time of its intervention only and within the limits of Client's instructions, if any. The Company's sole responsibility is to its Client and this document does not exonerate parties to a transaction from exercising all their rights and obligations under the transaction documents. This document cannot be reproduced except in full, without prior written approval of the Company. Any unauthorized alteration, forgery or falsification of the content or appearance of this document is unlawful and offenders may be prosecuted to the fullest extent of the law. Unless otherwise stated the results shown in this test report refer only to the sample(s) tested.

Attention: To check the authenticity of testing /inspection report & certificate, please contact us at telephone: (86-755) 8307 1443, or email: CN.Doccheck@sgs.com

Verification Part Description:

SN ID	Sample No.	SGS Sample ID	Description
SN1	A1	NGB23-0012714-0001.C001	A150-M-0-B-AC24V&DC12-24V-Silvery metal screw
SN2	A2	NGB23-0012714-0001.C002	A150-M-0-B-AC24V&DC12-24V-Silvery metal rod
SN3	A3	NGB23-0012714-0001.C003	A150-M-0-B-AC24V&DC12-24V-Silvery metal base
SN4	A4	NGB23-0012714-0001.C004	A150-M-0-B-AC24V&DC12-24V-Black rubber ring
SN5	A5	NGB23-0012714-0001.C005	A150-M-0-B-AC24V&DC12-24V-Transparent plastic lump
SN6	A6	NGB23-0012714-0001.C006	A150-M-0-B-AC24V&DC12-24V-Gray plastic shell
SN7	A7	NGB23-0012714-0001.C007	A150-M-0-B-AC24V&DC12-24V-Silvery plastic label
SN8	A8	NGB23-0012714-0001.C008	A150-M-0-B-AC24V&DC12-24V-Black rubber ring
SN9	A9	NGB23-0012714-0001.C009	A150-M-0-B-AC24V&DC12-24V-Black plastic bracket
SN10	A10	NGB23-0012714-0001.C010.C002	A150-M-0-B-AC24V&DC12-24V-Black rubber lump
SN11	A11	NGB23-0012714-0001.C011	A150-M-0-B-AC24V&DC12-24V-Black plastic lump
SN12	A12	NGB23-0012714-0001.C012	A150-M-0-B-AC24V&DC12-24V-Black plastic jacket
SN13	A13	NGB23-0012714-0001.C013	A150-M-0-B-AC24V&DC12-24V-Red plastic jacket
SN14	A14	NGB23-0012714-0001.C014	A150-M-0-B-AC24V&DC12-24V-Black plastic lump
SN15	A15	NGB23-0012714-0001.C015	A150-M-0-B-AC24V&DC12-24V-Black rubber lump
SN16	A16	NGB23-0012714-0001.C016	A150-M-0-B-AC24V&DC12-24V-Silvery metal soldering tin
SN17	A17	NGB23-0012714-0001.C017	A150-M-0-B-AC24V&DC12-24V-Black diode body
SN18	A18	NGB23-0012714-0001.C018	A150-M-0-B-AC24V&DC12-24V-Black audion body
SN19	A19	NGB23-0012714-0001.C019	A150-M-0-B-AC24V&DC12-24V-Green PCB body
SN20	A20	NGB23-0012714-0001.C020	A150-M-0-B-AC24V&DC12-24V-Red plastic jacket
SN21	A21	NGB23-0012714-0001.C021	A150-M-0-B-AC24V&DC12-24V-Black plastic jacket
SN22	A22	NGB23-0012714-0001.C022	A150-M-0-B-AC24V&DC12-24V-Green plastic jacket
SN23	A23	NGB23-0012714-0001.C023	A150-M-0-B-AC24V&DC12-24V-Yellow plastic jacket
SN24	A24	NGB23-0012714-0001.C024	A150-M-0-B-AC24V&DC12-24V-White plastic jacket



Unless otherwise agreed in writing, this document is issued by the Company subject to its General Conditions of Service printed overleaf, available on request or accessible at <http://www.sgs.com/en/Terms-and-Conditions.aspx> and, for electronic format documents, subject to Terms and Conditions for Electronic Documents at <http://www.sgs.com/en/Terms-and-Conditions/Terms-e-Document.aspx>. Attention is drawn to the limitation of liability, indemnification and jurisdiction issues defined therein. Any holder of this document is advised that information contained hereon reflects the Company's findings at the time of its intervention only and within the limits of Client's instructions, if any. The Company's sole responsibility is to its Client and this document does not exonerate parties to a transaction from exercising all their rights and obligations under the transaction documents. This document cannot be reproduced except in full, without prior written approval of the Company. Any unauthorized alteration, forgery or falsification of the content or appearance of this document is unlawful and offenders may be prosecuted to the fullest extent of the law. Unless otherwise stated the results shown in this test report refer only to the sample(s) tested.

Attention: To check the authenticity of testing /inspection report & certificate, please contact us at telephone: (86-755) 8307 1443, or email: CN.Doccheck@sgs.com

SN ID	Sample No.	SGS Sample ID	Description
SN25	A25	NGB23-0012714-0001.C025	A150-M-0-B-AC24V&DC12-24V-Blue plastic jacket
SN26	A26	NGB23-0012714-0001.C026	A150-M-0-B-AC24V&DC12-24V-White plastic sheath
SN27	A27	NGB23-0012714-0001.C027	A150-M-0-B-AC24V&DC12-24V-White plastic piece
SN28	A28	NGB23-0012714-0001.C028	A150-M-0-B-AC24V&DC12-24V-Black plastic bracket
SN29	A29	NGB23-0012714-0001.C029	A150-M-0-B-AC24V&DC12-24V-Black rubber ring
SN30	A30	NGB23-0012714-0001.C030	A150-M-0-B-AC24V&DC12-24V-Golden metal gear
SN31	A31	NGB23-0012714-0001.C031	A150-M-0-B-AC24V&DC12-24V-Black metal gear
SN32	A32	NGB23-0012714-0001.C032	A150-M-0-B-AC24V&DC12-24V-Silvery metal rod
SN33	A33	NGB23-0012714-0001.C033	A150-M-0-B-AC24V&DC12-24V-Silvery metal soldering tin
SN34	A34	NGB23-0012714-0001.C034	A150-M-0-B-AC24V&DC12-24V-Beige plastic bracket
SN35	A35	NGB23-0012714-0001.C035	A150-M-0-B-AC24V&DC12-24V-Black carbon brush lump
SN36	A36	NGB23-0012714-0001.C036	A150-M-0-B-AC24V&DC12-24V-Golden metal gear
SN37	A37	NGB23-0012714-0001.C037	A150-M-0-B-AC24V&DC12-24V-Copper-colored metal lump
SN38	A38	NGB23-0012714-0001.C038	A150-M-0-B-AC24V&DC12-24V-Black magnet lump
SN39	A39	NGB23-0012714-0001.C039	A150-M-0-B-AC24V&DC12-24V-Green coating
SN40	A40	NGB23-0012714-0001.C040	A150-M-0-B-AC24V&DC12-24V-Silvery metal rod
SN41	A41	NGB23-0012714-0001.C041	A150-M-0-B-AC24V&DC12-24V-Silvery metal shell
SN42	A42	NGB23-0012714-0001.C042	A150-M-0-B-AC24V&DC12-24V-Golden metal washer
SN43	A43	NGB23-0012714-0001.C043	A150-M-0-B-AC24V&DC12-24V-Silvery metal bracket
SN44	A44	NGB23-0012714-0001.C044	A150-M-0-B-AC24V&DC12-24V-Black rubber ring
SN45	A45	NGB23-0012714-0001.C045	A150-M-0-B-AC24V&DC12-24V-Golden metal ring
SN46	A46	NGB23-0012714-0001.C046	A150-M-0-B-AC24V&DC12-24V-Black metal gear
SN47	A47	NGB23-0012714-0001.C047	A150-M-0-B-AC24V&DC12-24V-Silvery metal rod
SN48	A48	NGB23-0012714-0001.C048	A150-M-0-B-AC24V&DC12-24V-Black plastic bracket
SN49	A49	NGB23-0012714-0001.C049	A150-M-0-B-AC24V&DC12-24V-Black rubber ring



Unless otherwise agreed in writing, this document is issued by the Company subject to its General Conditions of Service printed overleaf, available on request or accessible at <http://www.sgs.com/en/Terms-and-Conditions.aspx> and, for electronic format documents, subject to Terms and Conditions for Electronic Documents at <http://www.sgs.com/en/Terms-and-Conditions/Terms-e-Document.aspx>. Attention is drawn to the limitation of liability, indemnification and jurisdiction issues defined therein. Any holder of this document is advised that information contained hereon reflects the Company's findings at the time of its intervention only and within the limits of Client's instructions, if any. The Company's sole responsibility is to its Client and this document does not exonerate parties to a transaction from exercising all their rights and obligations under the transaction documents. This document cannot be reproduced except in full, without prior written approval of the Company. Any unauthorized alteration, forgery or falsification of the content or appearance of this document is unlawful and offenders may be prosecuted to the fullest extent of the law. Unless otherwise stated the results shown in this test report refer only to the sample(s) tested.

Attention: To check the authenticity of testing /inspection report & certificate, please contact us at telephone: (86-755) 8307 1443, or email: CN.Doccheck@sgs.com

SN ID	Sample No.	SGS Sample ID	Description
SN50	A50	NGB23-0012714-0001.C050	A150-M-0-B-AC24V&DC12-24V-Silvery metal base
SN51	A51	NGB23-0012714-0001.C051	A150-M-0-B-AC24V&DC12-24V-Silvery metal spring
SN52	A52	NGB23-0012714-0001.C052	A150-M-0-B-AC24V&DC12-24V-Golden metal lump
SN53	A53	NGB23-0012714-0001.C053	A150-M-0-B-AC24V&DC12-24V-Gray plastic bracket
SN54	B1	NGB23-0012714-0002.C001	A150-T-0-B-CR202-AC24&DC12-24V-Silvery plastic label
SN55	B2	NGB23-0012714-0002.C002	A150-T-0-B-CR202-AC24&DC12-24V-Silvery metal base
SN56	B3	NGB23-0012714-0002.C003	A150-T-0-B-CR202-AC24&DC12-24V-Black rubber ring
SN57	B4	NGB23-0012714-0002.C004	A150-T-0-B-CR202-AC24&DC12-24V-Blue plastic shell
SN58	B5	NGB23-0012714-0002.C005	A150-T-0-B-CR202-AC24&DC12-24V-Black rubber lump
SN59	B6	NGB23-0012714-0002.C006	A150-T-0-B-CR202-AC24&DC12-24V-Black plastic shell
SN60	B7	NGB23-0012714-0002.C007	A150-T-0-B-CR202-AC24&DC12-24V-Black rubber lump
SN61	B8	NGB23-0012714-0002.C008	A150-T-0-B-CR202-AC24&DC12-24V-Black plastic shell
SN62	B9	NGB23-0012714-0002.C009	A150-T-0-B-CR202-AC24&DC12-24V-Black rubber lump
SN63	B10	NGB23-0012714-0002.C010	A150-T-0-B-CR202-AC24&DC12-24V-White solid adhesive lump
SN64	B11	NGB23-0012714-0002.C011	A150-T-0-B-CR202-AC24&DC12-24V-Black plastic bracket
SN65	B12	NGB23-0012714-0002.C012	A150-T-0-B-CR202-AC24&DC12-24V-Silvery metal piece
SN66	B13	NGB23-0012714-0002.C013	A150-T-0-B-CR202-AC24&DC12-24V-Copper-colored metal piece
SN67	B14	NGB23-0012714-0002.C014	A150-T-0-B-CR202-AC24&DC12-24V-Silvery metal soldering tin
SN68	B15	NGB23-0012714-0002.C015	A150-T-0-B-CR202-AC24&DC12-24V-Green PCB body
SN69	B16	NGB23-0012714-0002.C016	A150-T-0-B-CR202-AC24&DC12-24V-Black audion body
SN70	B17	NGB23-0012714-0002.C017	A150-T-0-B-CR202-AC24&DC12-24V-Blue capacitor body
SN71	B18	NGB23-0012714-0002.C018	A150-T-0-B-CR202-AC24&DC12-24V-Silvery metal soldering tin
SN72	B19	NGB23-0012714-0002.C019	A150-T-0-B-CR202-AC24&DC12-24V-Green PCB body
SN73	B20	NGB23-0012714-0002.C020	A150-T-0-B-CR202-AC24&DC12-24V-Red plastic jacket
SN74	B21	NGB23-0012714-0002.C021	A150-T-0-B-CR202-AC24&DC12-24V-Black plastic jacket



Unless otherwise agreed in writing, this document is issued by the Company subject to its General Conditions of Service printed overleaf, available on request or accessible at <http://www.sgs.com/en/Terms-and-Conditions.aspx> and, for electronic format documents, subject to Terms and Conditions for Electronic Documents at <http://www.sgs.com/en/Terms-and-Conditions/Terms-e-Document.aspx>. Attention is drawn to the limitation of liability, indemnification and jurisdiction issues defined therein. Any holder of this document is advised that information contained hereon reflects the Company's findings at the time of its intervention only and within the limits of Client's instructions, if any. The Company's sole responsibility is to its Client and this document does not exonerate parties to a transaction from exercising all their rights and obligations under the transaction documents. This document cannot be reproduced except in full, without prior written approval of the Company. Any unauthorized alteration, forgery or falsification of the content or appearance of this document is unlawful and offenders may be prosecuted to the fullest extent of the law. Unless otherwise stated the results shown in this test report refer only to the sample(s) tested.

Attention: To check the authenticity of testing /inspection report & certificate, please contact us at telephone: (86-755) 8307 1443, or email: CN.Doccheck@sgs.com

SN ID	Sample No.	SGS Sample ID	Description
SN75	B22	NGB23-0012714-0002.C022	A150-T-0-B-CR202-AC24&DC12-24V-White plastic sheath
SN76	C1	NGB23-0012714-0003.C001	A150-T-0-B-CR202-AC110-230V-Red plastic jacket
SN77	C2	NGB23-0012714-0003.C002	A150-T-0-B-CR202-AC110-230V-Black plastic jacket
SN78	C3	NGB23-0012714-0003.C003	A150-T-0-B-CR202-AC110-230V-Black plastic shell
SN79	C4	NGB23-0012714-0003.C004	A150-T-0-B-CR202-AC110-230V-Yellow plastic shell
SN80	C5	NGB23-0012714-0003.C005	A150-T-0-B-CR202-AC110-230V-Yellow solid adhesive lump
SN81	C6	NGB23-0012714-0003.C006	A150-T-0-B-CR202-AC110-230V-Brown plastic shell
SN82	C7	NGB23-0012714-0003.C007	A150-T-0-B-CR202-AC110-230V-Blue capacitor body
SN83	C8	NGB23-0012714-0003.C008	A150-T-0-B-CR202-AC110-230V-Silvery metal soldering tin
SN84	C9	NGB23-0012714-0003.C009	A150-T-0-B-CR202-AC110-230V-Blue capacitor body
SN85	C10	NGB23-0012714-0003.C010	A150-T-0-B-CR202-AC110-230V-Green PCB body
SN86	C11	NGB23-0012714-0003.C011	A150-T-0-B-CR202-AC110-230V-Green coating
SN87	C12	NGB23-0012714-0003.C012	A150-T-0-B-CR202-AC110-230V-Blue capacitor body
SN88	C13	NGB23-0012714-0003.C013	A150-T-0-B-CR202-AC110-230V-Black capacitor body
SN89	C14	NGB23-0012714-0003.C014	A150-T-0-B-CR202-AC110-230V-Black audion body
SN90	C15	NGB23-0012714-0003.C015	A150-T-0-B-CR202-AC110-230V-Green PCB body
SN91	C16	NGB23-0012714-0003.C016	A150-T-0-B-CR202-AC110-230V-Silvery metal soldering tin
SN92	C17	NGB23-0012714-0003.C017	A150-T-0-B-CR202-AC110-230V-Black rectifier bridge body
SN93	C18	NGB23-0012714-0003.C018	A150-T-0-B-CR202-AC110-230V-Silvery plastic label
SN94	C19	NGB23-0012714-0003.C019	A150-T-0-B-CR202-AC110-230V-Silvery metal base
SN95	C20	NGB23-0012714-0003.C020	A150-T-0-B-CR202-AC110-230V-Black rubber ring
SN96	C21	NGB23-0012714-0003.C021	A150-T-0-B-CR202-AC110-230V-Silvery metal pin
SN97	C22	NGB23-0012714-0003.C022	A150-T-0-B-CR202-AC110-230V-Black plastic shell
SN98	C23	NGB23-0012714-0003.C023	A150-T-0-B-CR202-AC110-230V-Black plastic bracket
SN99	C24	NGB23-0012714-0003.C024	A150-T-0-B-CR202-AC110-230V-Yellow plastic adhesive tape



Unless otherwise agreed in writing, this document is issued by the Company subject to its General Conditions of Service printed overleaf, available on request or accessible at <http://www.sgs.com/en/Terms-and-Conditions.aspx> and, for electronic format documents, subject to Terms and Conditions for Electronic Documents at <http://www.sgs.com/en/Terms-and-Conditions/Terms-e-Document.aspx>. Attention is drawn to the limitation of liability, indemnification and jurisdiction issues defined therein. Any holder of this document is advised that information contained hereon reflects the Company's findings at the time of its intervention only and within the limits of Client's instructions, if any. The Company's sole responsibility is to its Client and this document does not exonerate parties to a transaction from exercising all their rights and obligations under the transaction documents. This document cannot be reproduced except in full, without prior written approval of the Company. Any unauthorized alteration, forgery or falsification of the content or appearance of this document is unlawful and offenders may be prosecuted to the fullest extent of the law. Unless otherwise stated the results shown in this test report refer only to the sample(s) tested.

Attention: To check the authenticity of testing /inspection report & certificate, please contact us at telephone: (86-755) 8307 1443, or email: CN.Doccheck@sgs.com

SN ID	Sample No.	SGS Sample ID	Description
SN100	C25	NGB23-0012714-0003.C025	A150-T-0-B-CR202-AC110-230V-Silvery metal soldering tin
SN101	C26	NGB23-0012714-0003.C026	A150-T-0-B-CR202-AC110-230V-Green PCB body
SN102	C27	NGB23-0012714-0003.C027	A150-T-0-B-CR202-AC110-230V-Blue capacitor body
SN103	C28	NGB23-0012714-0003.C028	A150-T-0-B-CR202-AC110-230V-Black diode body
SN104	C29	NGB23-0012714-0003.C029	A150-T-0-B-CR202-AC110-230V-Black rectifier bridge body
SN105	C30	NGB23-0012714-0003.C030	A150-T-0-B-CR202-AC110-230V-Black rectifier bridge body
SN106	C31	NGB23-0012714-0003.C031	A150-T-0-B-CR202-AC110-230V-Black rubber lump
SN107	C32	NGB23-0012714-0003.C032	A150-T-0-B-CR202-AC110-230V-Black plastic jacket
SN108	C33	NGB23-0012714-0003.C033	A150-T-0-B-CR202-AC110-230V-Black rubber lump
SN109	C34	NGB23-0012714-0003.C034	A150-T-0-B-CR202-AC110-230V-Black plastic jacket
SN110	C35	NGB23-0012714-0003.C035	A150-T-0-B-CR202-AC110-230V-Black rubber lump



Unless otherwise agreed in writing, this document is issued by the Company subject to its General Conditions of Service printed overleaf, available on request or accessible at <http://www.sgs.com/en/Terms-and-Conditions.aspx> and, for electronic format documents, subject to Terms and Conditions for Electronic Documents at <http://www.sgs.com/en/Terms-and-Conditions/Terms-e-Document.aspx>. Attention is drawn to the limitation of liability, indemnification and jurisdiction issues defined therein. Any holder of this document is advised that information contained hereon reflects the Company's findings at the time of its intervention only and within the limits of Client's instructions, if any. The Company's sole responsibility is to its Client and this document does not exonerate parties to a transaction from exercising all their rights and obligations under the transaction documents. This document cannot be reproduced except in full, without prior written approval of the Company. Any unauthorized alteration, forgery or falsification of the content or appearance of this document is unlawful and offenders may be prosecuted to the fullest extent of the law. Unless otherwise stated the results shown in this test report refer only to the sample(s) tested.

Attention: To check the authenticity of testing /inspection report & certificate, please contact us at telephone: (86-755) 8307 1443, or email: CN.Doccheck@sgs.com

Verification Result(s):

In accordance with the result of material risk assessment, the following disjointed parts in the submitted sample have been verified. (Unless otherwise specified, the unit is mg/kg).

Test Item(s)	A1	A2	A3	A4	A5	A6	A7	A8
Cd	BL	BL	BL	BL	BL	BL	BL	BL
Pb	BL	BL	BL	BL	BL	BL	BL	BL
Hg	BL	BL	BL	BL	BL	BL	BL	BL
Cr(VI)▼	ND	ND	BL	BL	BL	BL	BL	BL
PBBs	---	---	---	BL	BL	BL	BL	BL
PBDEs	---	---	---	BL	BL	BL	BL	BL
DBP	---	---	---	ND	BL	BL	ND	BL
BBP	---	---	---	ND	BL	BL	ND	BL
DEHP	---	---	---	ND	BL	BL	ND	BL
DIBP	---	---	---	ND	BL	BL	ND	BL
Conclusion	PASS	PASS	PASS	PASS	PASS	PASS	PASS	PASS

Test Item(s)	A9	A10	A11	A12	A13	A14	A15	A16
Cd	BL	BL	BL	BL	BL	BL	BL	BL
Pb	BL	BL	BL	BL	BL	BL	BL	BL
Hg	BL	BL	BL	BL	BL	BL	BL	BL
Cr(VI)▼	BL	BL	BL	BL	BL	BL	BL	BL
PBBs	BL	BL	BL	BL	BL	BL	BL	---
PBDEs	BL	BL	BL	BL	BL	BL	BL	---
DBP	BL	ND	BL	BL	BL	BL	BL	---
BBP	BL	ND	BL	BL	BL	BL	BL	---
DEHP	BL	ND	BL	BL	BL	BL	BL	---
DIBP	BL	ND	BL	BL	BL	BL	BL	---
Conclusion	PASS	PASS	PASS	PASS	PASS	PASS	PASS	PASS

Test Item(s)	A17	A18	A19	A20	A21	A22	A23	A24
Cd	BL	BL	BL	BL	BL	BL	BL	BL
Pb	BL	BL	BL	BL	BL	BL	BL	BL
Hg	BL	BL	BL	BL	BL	BL	BL	BL
Cr(VI)▼	BL	BL	BL	BL	BL	BL	BL	BL
PBBs	BL	BL	ND	BL	BL	BL	BL	BL
PBDEs	BL	BL	ND	BL	BL	BL	BL	BL
DBP	ND	ND	BL	BL	BL	BL	BL	BL
BBP	ND	ND	BL	BL	BL	BL	BL	BL
DEHP	ND	ND	BL	BL	BL	BL	BL	BL
DIBP	ND	ND	BL	BL	BL	BL	BL	BL
Conclusion	PASS	PASS	PASS	PASS	PASS	PASS	PASS	PASS

Test Item(s)	A25	A26	A27	A28	A29	A30	A31	A32
Cd	BL	BL	BL	BL	BL	BL	BL	BL
Pb	BL	BL	BL	BL	BL	37298▲	2505▲	BL
Hg	BL	BL	BL	BL	BL	BL	BL	BL
Cr(VI)▼	BL	BL	BL	BL	BL	BL	ND	ND



Unless otherwise agreed in writing, this document is issued by the Company subject to its General Conditions of Service printed overleaf, available on request or accessible at <http://www.sgs.com/en/Terms-and-Conditions.aspx> and, for electronic format documents, subject to Terms and Conditions for Electronic Documents at <http://www.sgs.com/en/Terms-and-Conditions/Terms-e-Document.aspx>. Attention is drawn to the limitation of liability, indemnification and jurisdiction issues defined therein. Any holder of this document is advised that information contained hereon reflects the Company's findings at the time of its intervention only and within the limits of Client's instructions, if any. The Company's sole responsibility is to its Client and this document does not exonerate parties to a transaction from exercising all their rights and obligations under the transaction documents. This document cannot be reproduced except in full, without prior written approval of the Company. Any unauthorized alteration, forgery or falsification of the content or appearance of this document is unlawful and offenders may be prosecuted to the fullest extent of the law. Unless otherwise stated the results shown in this test report refer only to the sample(s) tested.

Attention: To check the authenticity of testing /inspection report & certificate, please contact us at telephone: (86-755) 8307 1443, or email: CN.Doccheck@sgs.com

Test Item(s)	A25	A26	A27	A28	A29	A30	A31	A32
PBBs	BL	BL	BL	BL	BL	---	---	---
PBDEs	BL	BL	BL	BL	BL	---	---	---
DBP	BL	BL	ND	ND	BL	---	---	---
BBP	BL	BL	ND	ND	BL	---	---	---
DEHP	BL	BL	ND	ND	BL	---	---	---
DIBP	BL	BL	ND	ND	BL	---	---	---
Conclusion	PASS	PASS	PASS	PASS	PASS	PASS	PASS	PASS

Test Item(s)	A33	A34	A35	A36	A37	A38	A39	A40
Cd	BL	BL	BL	BL	BL	BL	BL	BL
Pb	BL	BL	BL	BL	BL	BL	BL	BL
Hg	BL	BL	BL	BL	BL	BL	BL	BL
Cr(VI)▼	BL	BL	BL	BL	BL	ND	ND	BL
PBBs	---	BL	BL	---	---	BL	BL	---
PBDEs	---	BL	BL	---	---	BL	BL	---
DBP	---	BL	ND	---	---	---	ND	---
BBP	---	BL	ND	---	---	---	ND	---
DEHP	---	BL	ND	---	---	---	ND	---
DIBP	---	BL	ND	---	---	---	ND	---
Conclusion	PASS	PASS	PASS	PASS	PASS	PASS	PASS	PASS

Test Item(s)	A41	A42	A43	A44	A45	A46	A47	A48
Cd	BL	BL	BL	BL	BL	BL	BL	BL
Pb	BL	22667▲	BL	BL	33752▲	BL	BL	BL
Hg	BL	BL	BL	BL	BL	BL	BL	BL
Cr(VI)▼	BL	BL	ND	BL	BL	ND	ND	BL
PBBs	---	---	---	BL	---	---	---	BL
PBDEs	---	---	---	BL	---	---	---	BL
DBP	---	---	---	BL	---	---	---	BL
BBP	---	---	---	BL	---	---	---	BL
DEHP	---	---	---	BL	---	---	---	BL
DIBP	---	---	---	BL	---	---	---	BL
Conclusion	PASS	PASS	PASS	PASS	PASS	PASS	PASS	PASS

Test Item(s)	A49	A50	A51	A52	A53	B1	B2	B3
Cd	BL	BL	BL	BL	BL	BL	BL	BL
Pb	BL	BL	BL	37474▲	BL	BL	BL	BL
Hg	BL	BL	BL	BL	BL	BL	BL	BL
Cr(VI)▼	BL	BL	BL	BL	BL	BL	BL	BL
PBBs	BL	---	---	---	BL	BL	---	BL
PBDEs	BL	---	---	---	BL	BL	---	BL
DBP	BL	---	---	---	BL	ND	---	ND
BBP	BL	---	---	---	BL	ND	---	ND
DEHP	BL	---	---	---	BL	ND	---	ND
DIBP	BL	---	---	---	BL	ND	---	ND
Conclusion	PASS	PASS	PASS	PASS	PASS	PASS	PASS	PASS



Unless otherwise agreed in writing, this document is issued by the Company subject to its General Conditions of Service printed overleaf, available on request or accessible at <http://www.sgs.com/en/Terms-and-Conditions.aspx> and, for electronic format documents, subject to Terms and Conditions for Electronic Documents at <http://www.sgs.com/en/Terms-and-Conditions/Terms-e-Document.aspx>. Attention is drawn to the limitation of liability, indemnification and jurisdiction issues defined therein. Any holder of this document is advised that information contained hereon reflects the Company's findings at the time of its intervention only and within the limits of Client's instructions, if any. The Company's sole responsibility is to its Client and this document does not exonerate parties to a transaction from exercising all their rights and obligations under the transaction documents. This document cannot be reproduced except in full, without prior written approval of the Company. Any unauthorized alteration, forgery or falsification of the content or appearance of this document is unlawful and offenders may be prosecuted to the fullest extent of the law. Unless otherwise stated the results shown in this test report refer only to the sample(s) tested.

Attention: To check the authenticity of testing /inspection report & certificate, please contact us at telephone: (86-755) 8307 1443, or email: CN.Doccheck@sgs.com

SGS-CSI Standards Technical Services Co., Ltd. No.1177, Lingyun Road, Hi-Tech Zone, Ningbo, Zhejiang, China 315040 tE&E (86-574)89070249 www.sgs.com.cn
 Ningbo Branch Chemical Laboratory 中国·浙江·宁波高新区凌云路1177号 邮编: 315040 tHL (86-574)89070271 tML (86-574)89070242 sgs.china@sgs.com

Test Item(s)	B4	B5	B6	B7	B8	B9	B10	B11
Cd	BL	BL	BL	BL	BL	BL	BL	BL
Pb	BL	BL	BL	BL	BL	BL	BL	BL
Hg	BL	BL	BL	BL	BL	BL	BL	BL
Cr(VI)▼	BL	BL	BL	BL	BL	BL	BL	BL
PBBs	BL	BL	BL	BL	BL	BL	BL	ND
PBDEs	BL	BL	BL	BL	BL	BL	BL	ND
DBP	BL	BL	BL	BL	ND	BL	BL	BL
BBP	BL	BL	BL	BL	ND	BL	BL	BL
DEHP	BL	BL	BL	BL	ND	BL	BL	BL
DIBP	BL	BL	BL	BL	ND	BL	BL	BL
Conclusion	PASS	PASS	PASS	PASS	PASS	PASS	PASS	PASS

Test Item(s)	B12	B13	B14	B15	B16	B17	B18	B19
Cd	BL	BL	BL	BL	BL	BL	BL	BL
Pb	BL	BL	BL	BL	BL	BL	BL	BL
Hg	BL	BL	BL	BL	BL	BL	BL	BL
Cr(VI)▼	ND	BL	BL	BL	BL	BL	BL	BL
PBBs	---	---	---	ND	BL	BL	---	ND
PBDEs	---	---	---	ND	BL	BL	---	ND
DBP	---	---	---	BL	ND	ND	---	BL
BBP	---	---	---	BL	ND	ND	---	BL
DEHP	---	---	---	BL	ND	ND	---	BL
DIBP	---	---	---	BL	ND	ND	---	BL
Conclusion	PASS	PASS	PASS	PASS	PASS	PASS	PASS	PASS

Test Item(s)	B20	B21	B22	C1	C2	C3	C4	C5
Cd	BL	BL	BL	BL	BL	BL	BL	BL
Pb	BL	BL	BL	BL	BL	BL	BL	BL
Hg	BL	BL	BL	BL	BL	BL	BL	BL
Cr(VI)▼	BL	BL	BL	BL	BL	BL	BL	BL
PBBs	BL	BL	BL	BL	BL	BL	ND	ND
PBDEs	BL	BL	BL	BL	BL	BL	ND	ND
DBP	BL	BL	BL	ND	ND	ND	BL	BL
BBP	BL	BL	BL	ND	ND	ND	BL	BL
DEHP	BL	BL	BL	ND	ND	ND	BL	BL
DIBP	BL	BL	BL	ND	ND	ND	BL	BL
Conclusion	PASS	PASS	PASS	PASS	PASS	PASS	PASS	PASS

Test Item(s)	C6	C7	C8	C9	C10	C11	C12	C13
Cd	BL	BL	BL	BL	BL	BL	BL	BL
Pb	BL	BL	BL	BL	BL	BL	BL	BL
Hg	BL	BL	BL	BL	BL	BL	BL	BL
Cr(VI)▼	BL	BL	BL	BL	BL	BL	BL	BL
PBBs	BL	BL	---	BL	ND	BL	BL	BL



Unless otherwise agreed in writing, this document is issued by the Company subject to its General Conditions of Service printed overleaf, available on request or accessible at <http://www.sgs.com/en/Terms-and-Conditions.aspx> and, for electronic format documents, subject to Terms and Conditions for Electronic Documents at <http://www.sgs.com/en/Terms-and-Conditions/Terms-e-Document.aspx>. Attention is drawn to the limitation of liability, indemnification and jurisdiction issues defined therein. Any holder of this document is advised that information contained hereon reflects the Company's findings at the time of its intervention only and within the limits of Client's instructions, if any. The Company's sole responsibility is to its Client and this document does not exonerate parties to a transaction from exercising all their rights and obligations under the transaction documents. This document cannot be reproduced except in full, without prior written approval of the Company. Any unauthorized alteration, forgery or falsification of the content or appearance of this document is unlawful and offenders may be prosecuted to the fullest extent of the law. Unless otherwise stated the results shown in this test report refer only to the sample(s) tested.

Attention: To check the authenticity of testing /inspection report & certificate, please contact us at telephone: (86-755) 8307 1443, or email: CN.Doccheck@sgs.com

Test Item(s)	C6	C7	C8	C9	C10	C11	C12	C13
PBDEs	BL	BL	---	BL	ND	BL	BL	BL
DBP	ND	ND	---	ND	BL	ND	ND	ND
BBP	ND	ND	---	ND	BL	ND	ND	ND
DEHP	ND	ND	---	ND	BL	ND	ND	ND
DIBP	ND	ND	---	ND	BL	ND	ND	ND
Conclusion	PASS	PASS	PASS	PASS	PASS	PASS	PASS	PASS

Test Item(s)	C14	C15	C16	C17	C18	C19	C20	C21
Cd	BL	BL	BL	BL	BL	BL	BL	BL
Pb	BL	BL	BL	BL	BL	BL	BL	BL
Hg	BL	BL	BL	BL	BL	BL	BL	BL
Cr(VI)▼	BL	BL	BL	BL	BL	BL	BL	BL
PBBs	BL	ND	---	BL	BL	---	BL	---
PBDEs	BL	ND	---	BL	BL	---	BL	---
DBP	ND	BL	---	ND	ND	---	ND	---
BBP	ND	BL	---	ND	ND	---	ND	---
DEHP	ND	BL	---	ND	ND	---	ND	---
DIBP	ND	BL	---	ND	ND	---	ND	---
Conclusion	PASS	PASS	PASS	PASS	PASS	PASS	PASS	PASS

Test Item(s)	C22	C23	C24	C25	C26	C27	C28	C29
Cd	BL	BL	BL	BL	BL	BL	BL	BL
Pb	BL	BL	BL	BL	BL	BL	BL	BL
Hg	BL	BL	BL	BL	BL	BL	BL	BL
Cr(VI)▼	BL	BL	BL	BL	BL	BL	BL	BL
PBBs	ND	BL	ND	---	ND	BL	BL	BL
PBDEs	ND	BL	ND	---	ND	BL	BL	BL
DBP	BL	BL	BL	---	BL	BL	ND	ND
BBP	BL	BL	BL	---	BL	BL	ND	ND
DEHP	BL	BL	BL	---	BL	BL	ND	ND
DIBP	BL	BL	BL	---	BL	BL	ND	ND
Conclusion	PASS	PASS	PASS	PASS	PASS	PASS	PASS	PASS

Test Item(s)	C30	C31	C32	C33	C34	C35
Cd	BL	BL	BL	BL	BL	BL
Pb	BL	BL	BL	BL	BL	BL
Hg	BL	BL	BL	BL	BL	BL
Cr(VI)▼	BL	BL	BL	BL	BL	BL
PBBs	BL	BL	BL	BL	BL	BL
PBDEs	BL	BL	BL	BL	BL	BL
DBP	ND	ND	ND	ND	BL	BL
BBP	ND	ND	ND	ND	BL	BL
DEHP	ND	ND	ND	ND	BL	BL
DIBP	ND	ND	ND	ND	BL	BL
Conclusion	PASS	PASS	PASS	PASS	PASS	PASS



Unless otherwise agreed in writing, this document is issued by the Company subject to its General Conditions of Service printed overleaf, available on request or accessible at <http://www.sgs.com/en/Terms-and-Conditions.aspx> and, for electronic format documents, subject to Terms and Conditions for Electronic Documents at <http://www.sgs.com/en/Terms-and-Conditions/Terms-e-Document.aspx>. Attention is drawn to the limitation of liability, indemnification and jurisdiction issues defined therein. Any holder of this document is advised that information contained hereon reflects the Company's findings at the time of its intervention only and within the limits of Client's instructions, if any. The Company's sole responsibility is to its Client and this document does not exonerate parties to a transaction from exercising all their rights and obligations under the transaction documents. This document cannot be reproduced except in full, without prior written approval of the Company. Any unauthorized alteration, forgery or falsification of the content or appearance of this document is unlawful and offenders may be prosecuted to the fullest extent of the law. Unless otherwise stated the results shown in this test report refer only to the sample(s) tested.

Attention: To check the authenticity of testing /inspection report & certificate, please contact us at telephone: (86-755) 8307 1443, or email: CN.Doccheck@sgs.com

Notes:

- (1) Interpretation of screening results by X-ray fluorescence spectrometry (XRF):
 (a) Screening limits in mg/kg for regulated elements in various matrices according to IEC 62321-1:2013 Annex A as below table.

Element	Polymer	Metal	Composite Materials
Cd	$BL \leq (70-3\sigma) < X < (130+3\sigma) \leq OL$	$BL \leq (70-3\sigma) < X < (130+3\sigma) \leq OL$	$LOD < X < (150+3\sigma) \leq OL$
Pb	$BL \leq (700-3\sigma) < X < (1300+3\sigma) \leq OL$	$BL \leq (700-3\sigma) < X < (1300+3\sigma) \leq OL$	$BL \leq (500-3\sigma) < X < (1500+3\sigma) \leq OL$
Hg	$BL \leq (700-3\sigma) < X < (1300+3\sigma) \leq OL$	$BL \leq (700-3\sigma) < X < (1300+3\sigma) \leq OL$	$BL \leq (500-3\sigma) < X < (1500+3\sigma) \leq OL$
Br	$BL \leq (300-3\sigma) < X$	Not applicable	$BL \leq (250-3\sigma) < X$
Cr	$BL \leq (700-3\sigma) < X$	$BL \leq (700-3\sigma) < X$	$BL \leq (500-3\sigma) < X$

- (b) If the maximum allowed level restricts PBB/PBDE and Cr(VI) rather than Br and Cr, the exceptions are the XRF determinations of Br and Cr. If the quantitative results for the elements Br and/or are higher than the limit (for Br calculated based on the stoichiometry of Br in the most common congeners of PBB/PBDE), the sample is "inconclusive".
 (c) Results are obtained by EDXRF for primary screening, LOD = Limit of Detection, BL = Below Limit, OL= Over Limit, IN (The symbol X marks the region)=Inconclusive, where further investigation is necessary, and further chemical testing by ICP-OES (for Cd, Pb, Hg), UV-Vis (for Cr(VI)) and GC-MS (for PBBs/PBDEs) are recommended to be performed.
 (d) The EDXRF screening test for RoHS elements – The reading may be different to the actual content in the sample be of non-uniformity composition.
- (2) Screening results of Phthalates (PHTH) are for primary screening, and further chemical testing by GC-MS (for DBP, BBP, DEHP and DIBP) are recommended to be performed if the concentration exceeds the below warning value (unit: mg/kg).

Test Items	CAS No.	Polymer/ Composite Materials
Dibutyl Phthalate (DBP)	84-74-2	$BL \leq 600 < X$
Benzylbutyl Phthalate (BBP)	85-68-7	$BL \leq 600 < X$
Bis(2-ethylhexyl) Phthalate (DEHP)	117-81-7	$BL \leq 600 < X$
Diisobutyl Phthalate (DIBP)	84-69-5	$BL \leq 600 < X$

- (3) Interpretation of results by chemical tests:
 (a) mg/kg = 0.0001%, MDL=Method detection Limit, ND = Not Detected (<MDL), --- = Not Applicable.
 (b) Unit and MDL in wet chemical test

Test Items	Pb	Cd	Hg	DBP	BBP	DEHP	DIBP
Unit	mg/kg	mg/kg	mg/kg	mg/kg	mg/kg	mg/kg	mg/kg
MDL	10	10	10	100	100	100	100

The MDL for single compound of PBBs and PBDEs is 100 mg/kg,
 MDL of Cr(VI) for polymer, composite and leather sample is 10 mg/kg.
 MDL of Cr(VI) for metal sample is 0.10 µg/cm².

- (c) ▼ =Metal sample
 a. The sample is positive for Cr(VI) if the Cr(VI) concentration is greater than 0.13 µg/cm². The sample coating is considered to contain Cr(VI).
 b. The sample is negative for Cr(VI) if Cr(VI) is ND (concentration less than 0.10 µg/cm²). The coating is considered a non-Cr(VI) based coating
 c. The result between 0.10 µg/cm² and 0.13 µg/cm² is considered to be inconclusive-unavoidable coating variations may influence the determination



Unless otherwise agreed in writing, this document is issued by the Company subject to its General Conditions of Service printed overleaf, available on request or accessible at <http://www.sgs.com/en/Terms-and-Conditions.aspx> and, for electronic format documents, subject to Terms and Conditions for Electronic Documents at <http://www.sgs.com/en/Terms-and-Conditions/Terms-e-Document.aspx>. Attention is drawn to the limitation of liability, indemnification and jurisdiction issues defined therein. Any holder of this document is advised that information contained hereon reflects the Company's findings at the time of its intervention only and within the limits of Client's instructions, if any. The Company's sole responsibility is to its Client and this document does not exonerate parties to a transaction from exercising all their rights and obligations under the transaction documents. This document cannot be reproduced except in full, without prior written approval of the Company. Any unauthorized alteration, forgery or falsification of the content or appearance of this document is unlawful and offenders may be prosecuted to the fullest extent of the law. Unless otherwise stated the results shown in this test report refer only to the sample(s) tested.
Attention: To check the authenticity of testing /inspection report & certificate, please contact us at telephone: (86-755) 8307 1443, or email: CN.Doccheck@sgs.com

Information on storage conditions and production date of the tested sample is unavailable and thus Cr(VI) results represent status of the sample at the time of testing.

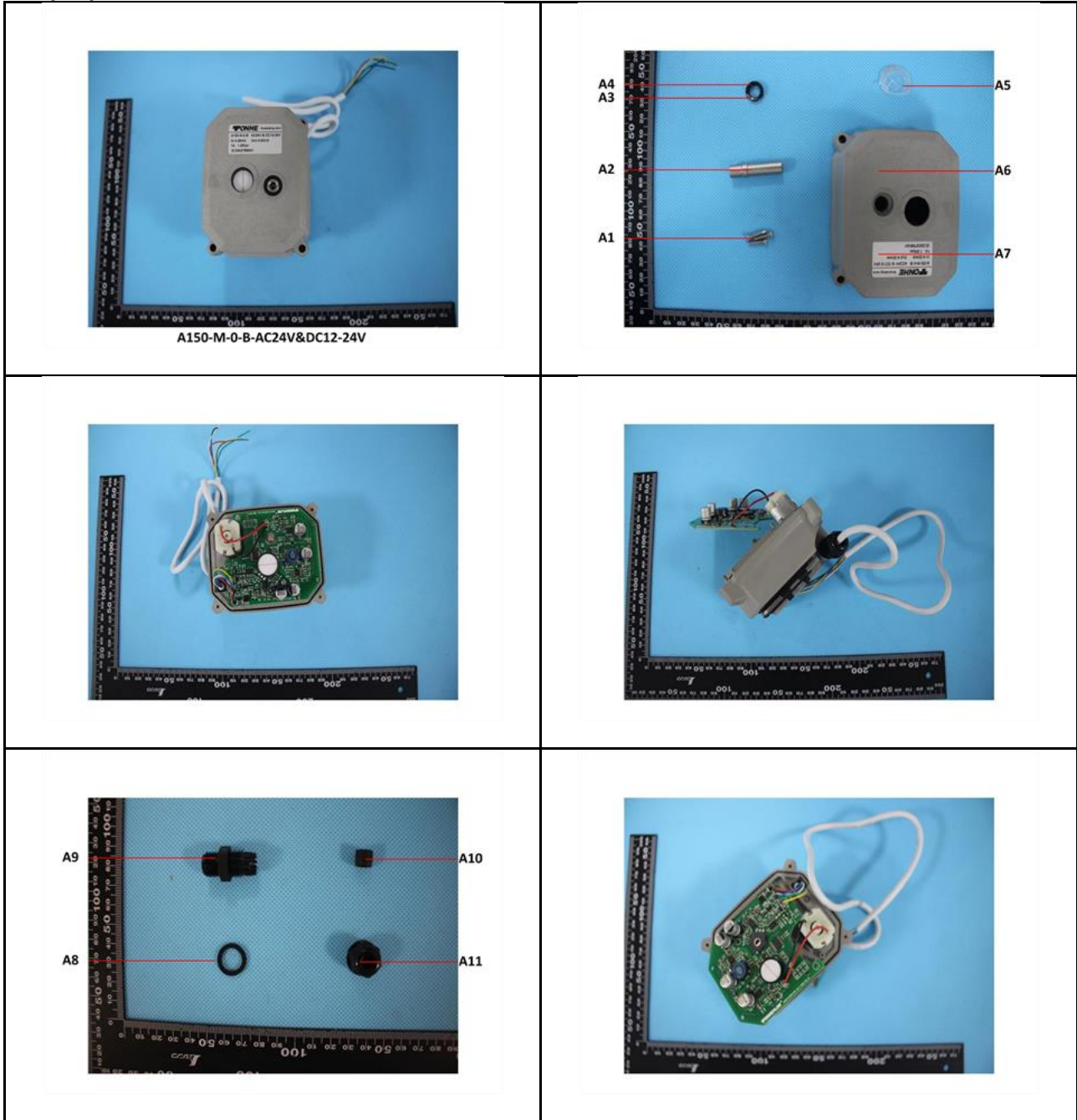
- (4) Restricted substances and maximum concentration values tolerated by weight in homogeneous materials under RoHS Directive: Cd: 0.01%, Pb/Hg/Cr(VI)/PBBs/PBDEs/DEHP/DBP/BBP/DIBP: 0.1%. The limit is quoted from RoHS Directive (EU) 2015/863.
- (5) IEC 62321 series is equivalent to EN 62321 series.
- (6) ▲=According to the declaration from the client, Lead (Pb) in A30, A42, A45 and A52 are exempted by EU RoHS directive 2011/65/EU based on |ANNEX III 6(c)|: Copper alloy containing up to 4 % lead by weight. Lead (Pb) in A31 is exempted by EU RoHS directive 2011/65/EU based on |ANNEX III 6(a)-I|: Lead as an alloying element in steel for machining purposes and in galvanised steel containing up to 0.35 % lead by weight and in batch hot dip galvanised steel components containing up to 0.2 % lead by weight.
- (7) According to the declaration from applicant, the materials of other parts in Model mentioned in Tested Extended Model No. are the same as those in Model "A150-M-0-B-AC24V&DC12-24V", and the results of Model "A150-M-0-B-AC24V&DC12-24V" for support the results of other parts in mentioned in Tested Extended Model No.. The applicant will take the responsibility of all discrepancy and risk.

Unless otherwise stated, the decision rule for conformity reporting is based on Binary Statement for Simple Acceptance Rule (w=0) stated in ILAC-G8:09/2019.



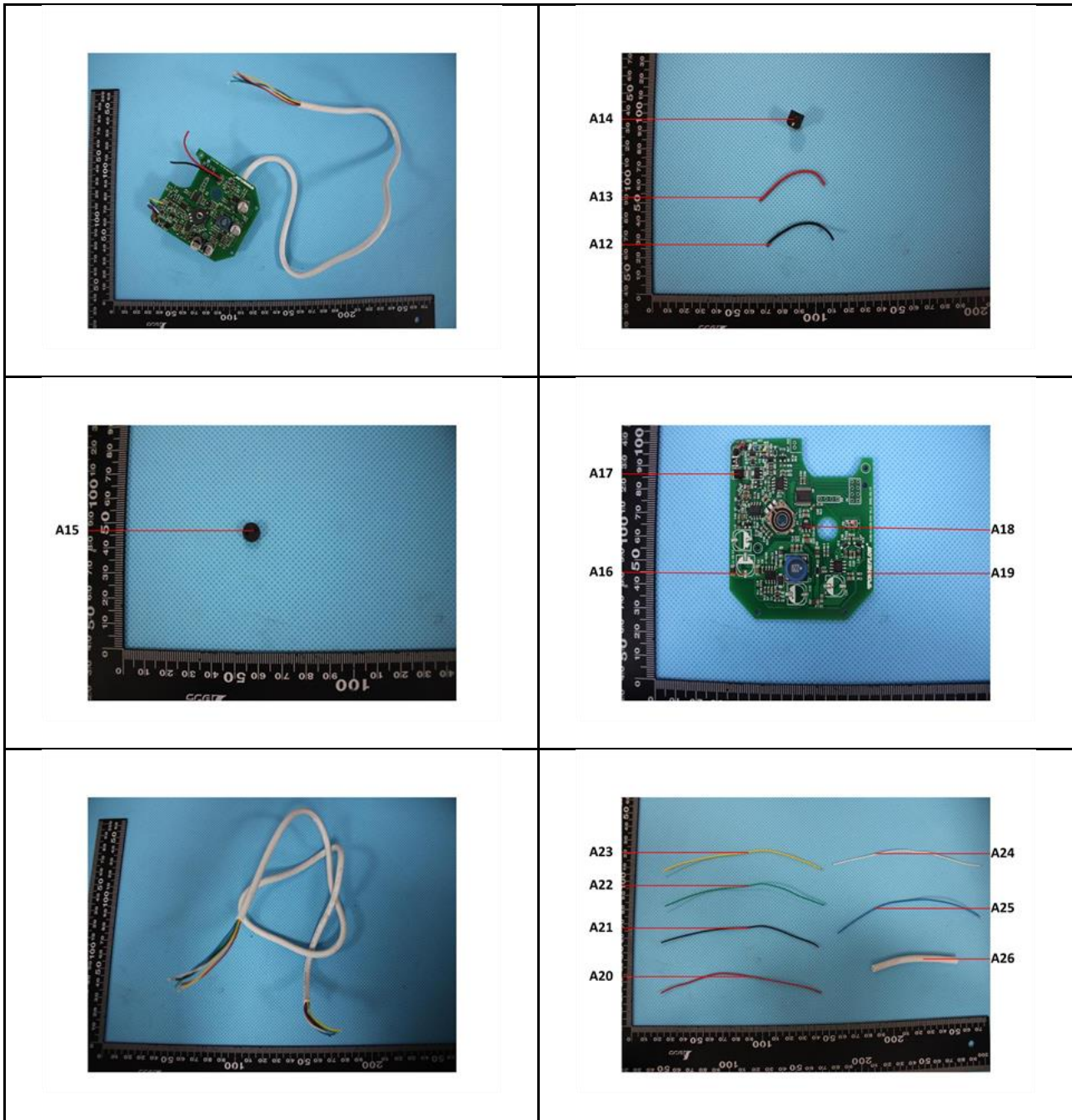
Unless otherwise agreed in writing, this document is issued by the Company subject to its General Conditions of Service printed overleaf, available on request or accessible at <http://www.sgs.com/en/Terms-and-Conditions.aspx> and, for electronic format documents, subject to Terms and Conditions for Electronic Documents at <http://www.sgs.com/en/Terms-and-Conditions/Terms-e-Document.aspx>. Attention is drawn to the limitation of liability, indemnification and jurisdiction issues defined therein. Any holder of this document is advised that information contained hereon reflects the Company's findings at the time of its intervention only and within the limits of Client's instructions, if any. The Company's sole responsibility is to its Client and this document does not exonerate parties to a transaction from exercising all their rights and obligations under the transaction documents. This document cannot be reproduced except in full, without prior written approval of the Company. Any unauthorized alteration, forgery or falsification of the content or appearance of this document is unlawful and offenders may be prosecuted to the fullest extent of the law. Unless otherwise stated the results shown in this test report refer only to the sample(s) tested.
Attention: To check the authenticity of testing /inspection report & certificate, please contact us at telephone: (86-755) 8307 1443, or email: CN.Doccheck@sgs.com

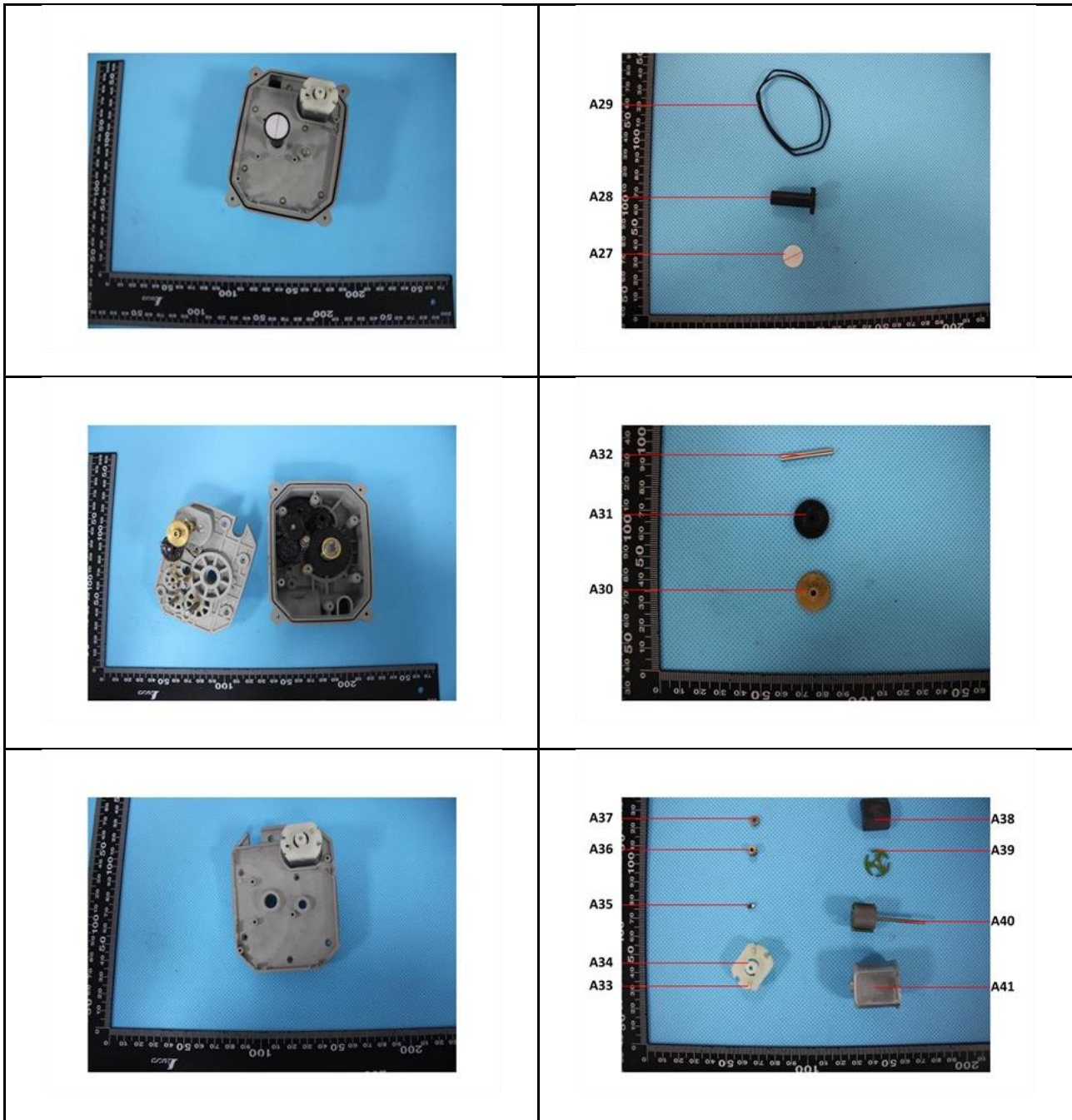
Sample photos:



Unless otherwise agreed in writing, this document is issued by the Company subject to its General Conditions of Service printed overleaf, available on request or accessible at <http://www.sgs.com/en/Terms-and-Conditions.aspx> and, for electronic format documents, subject to Terms and Conditions for Electronic Documents at <http://www.sgs.com/en/Terms-and-Conditions/Terms-e-Document.aspx>. Attention is drawn to the limitation of liability, indemnification and jurisdiction issues defined therein. Any holder of this document is advised that information contained hereon reflects the Company's findings at the time of its intervention only and within the limits of Client's instructions, if any. The Company's sole responsibility is to its Client and this document does not exonerate parties to a transaction from exercising all their rights and obligations under the transaction documents. This document cannot be reproduced except in full, without prior written approval of the Company. Any unauthorized alteration, forgery or falsification of the content or appearance of this document is unlawful and offenders may be prosecuted to the fullest extent of the law. Unless otherwise stated the results shown in this test report refer only to the sample(s) tested.

Attention: To check the authenticity of testing / inspection report & certificate, please contact us at telephone: (86-755) 8307 1443, or email: CN.Doccheck@sgs.com





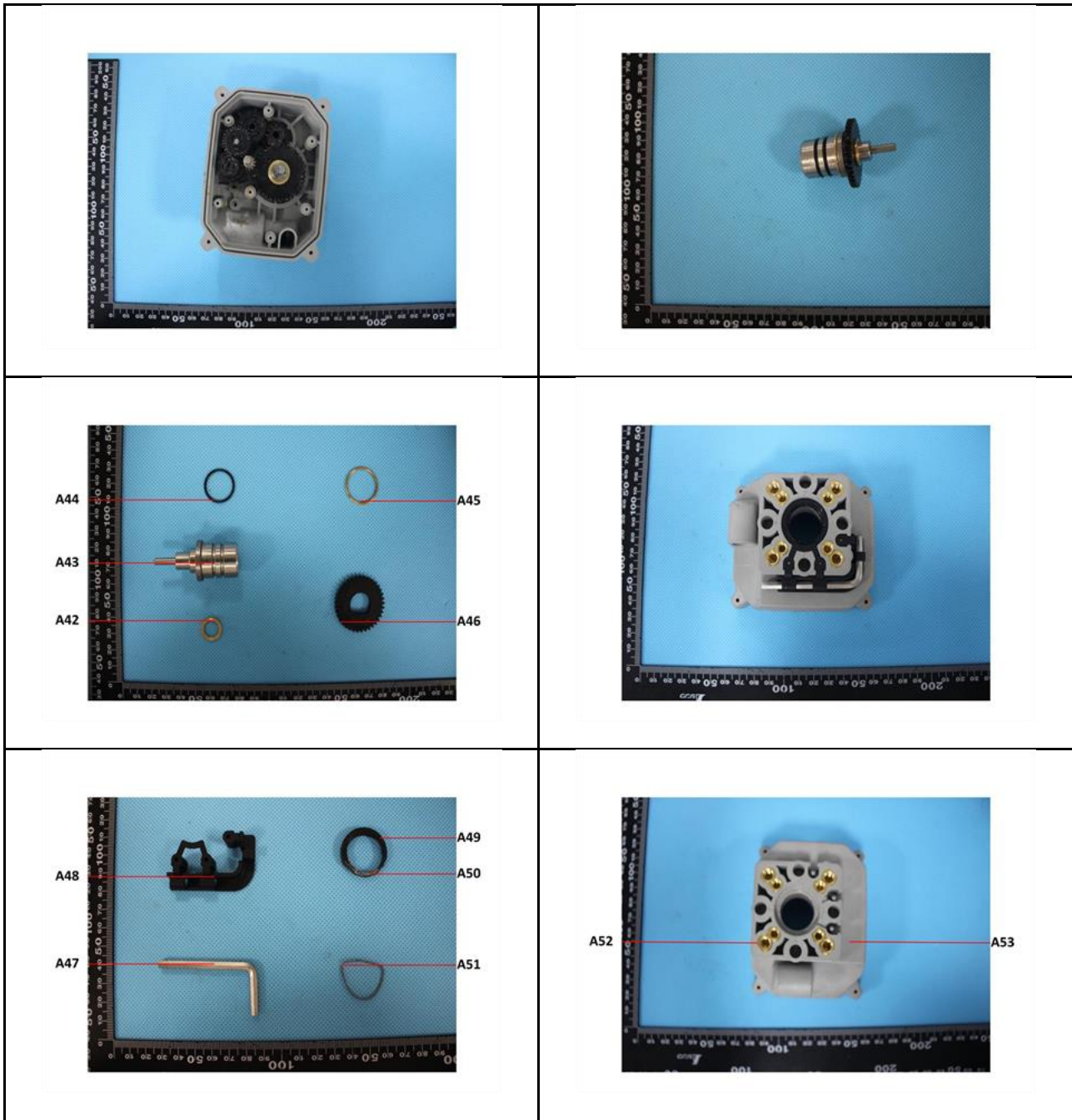
Unless otherwise agreed in writing, this document is issued by the Company subject to its General Conditions of Service printed overleaf, available on request or accessible at <http://www.sgs.com/en/Terms-and-Conditions.aspx> and, for electronic format documents, subject to Terms and Conditions for Electronic Documents at <http://www.sgs.com/en/Terms-and-Conditions/Terms-e-Document.aspx>. Attention is drawn to the limitation of liability, indemnification and jurisdiction issues defined therein. Any holder of this document is advised that information contained hereon reflects the Company's findings at the time of its intervention only and within the limits of Client's instructions, if any. The Company's sole responsibility is to its Client and this document does not exonerate parties to a transaction from exercising all their rights and obligations under the transaction documents. This document cannot be reproduced except in full, without prior written approval of the Company. Any unauthorized alteration, forgery or falsification of the content or appearance of this document is unlawful and offenders may be prosecuted to the fullest extent of the law. Unless otherwise stated the results shown in this test report refer only to the sample(s) tested.

Attention: To check the authenticity of testing / inspection report & certificate, please contact us at telephone: (86-755) 8307 1443, or email: CN.Doccheck@sgs.com

SGS-Standard Technical Services Co., Ltd.
Ningbo Branch Chemical Laboratory

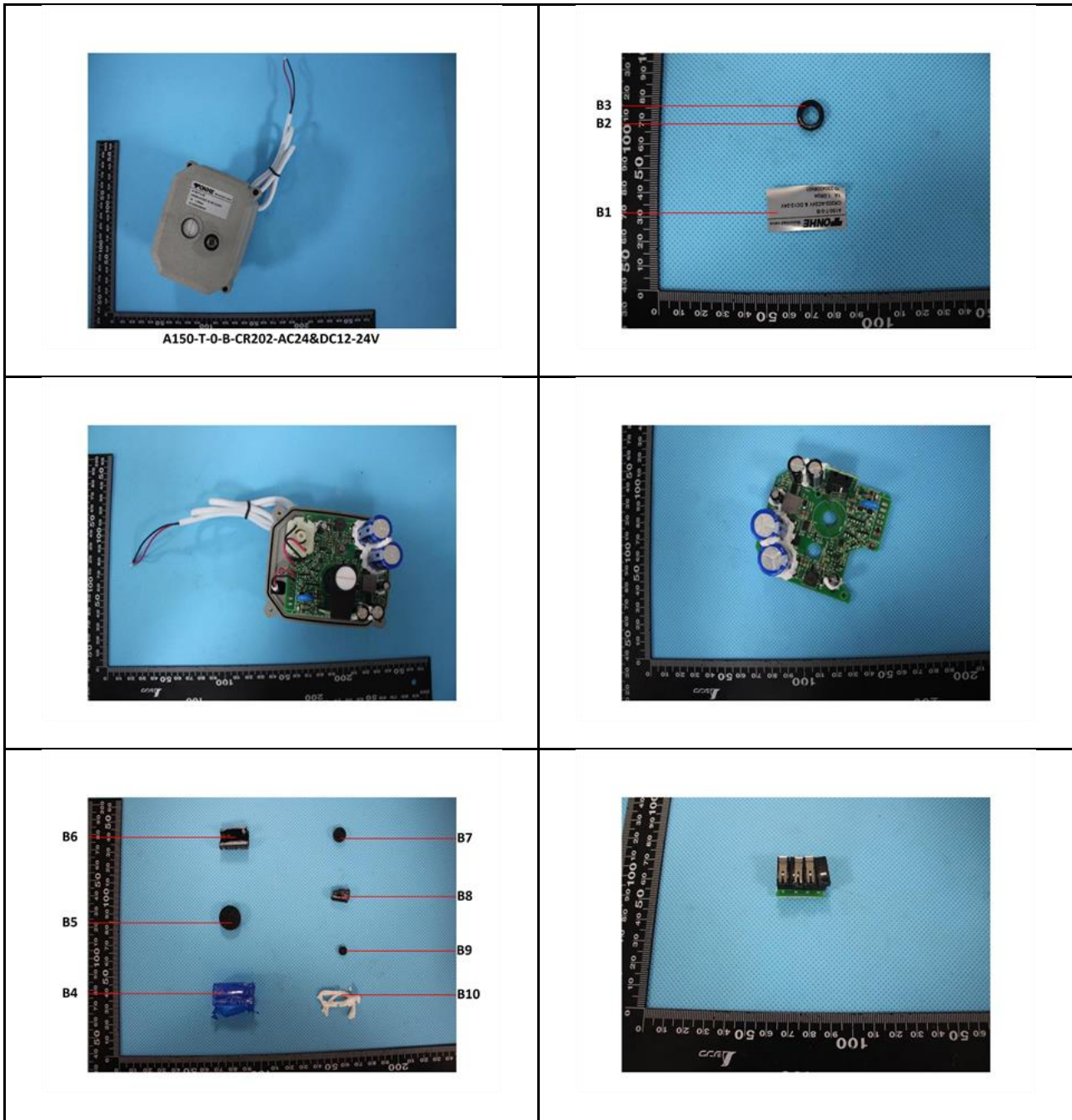
No.1177, Lingyun Road, Hi-Tech Zone, Ningbo, Zhejiang, China 315040 tE&E (86-574)89070249
中国·浙江·宁波高新区凌云路1177号 邮编: 315040 tHL (86-574)89070271 tML (86-574)89070242 sgs.china@sgs.com

www.sgs.com.cn



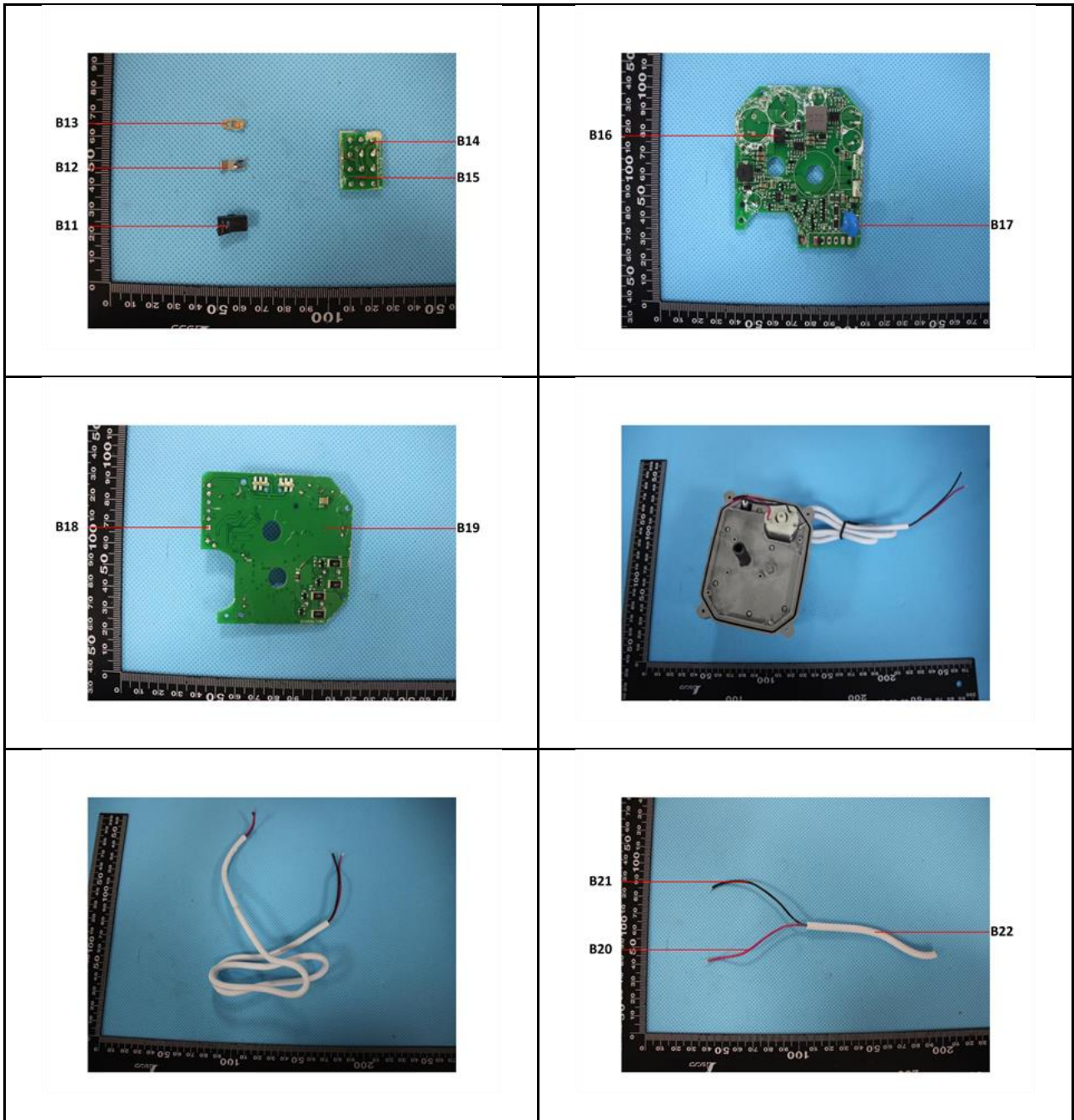
Unless otherwise agreed in writing, this document is issued by the Company subject to its General Conditions of Service printed overleaf, available on request or accessible at <http://www.sgs.com/en/Terms-and-Conditions.aspx> and, for electronic format documents, subject to Terms and Conditions for Electronic Documents at <http://www.sgs.com/en/Terms-and-Conditions/Terms-e-Document.aspx>. Attention is drawn to the limitation of liability, indemnification and jurisdiction issues defined therein. Any holder of this document is advised that information contained hereon reflects the Company's findings at the time of its intervention only and within the limits of Client's instructions, if any. The Company's sole responsibility is to its Client and this document does not exonerate parties to a transaction from exercising all their rights and obligations under the transaction documents. This document cannot be reproduced except in full, without prior written approval of the Company. Any unauthorized alteration, forgery or falsification of the content or appearance of this document is unlawful and offenders may be prosecuted to the fullest extent of the law. Unless otherwise stated the results shown in this test report refer only to the sample(s) tested.

Attention: To check the authenticity of testing / inspection report & certificate, please contact us at telephone: (86-755) 8307 1443, or email: CN.Doccheck@sgs.com



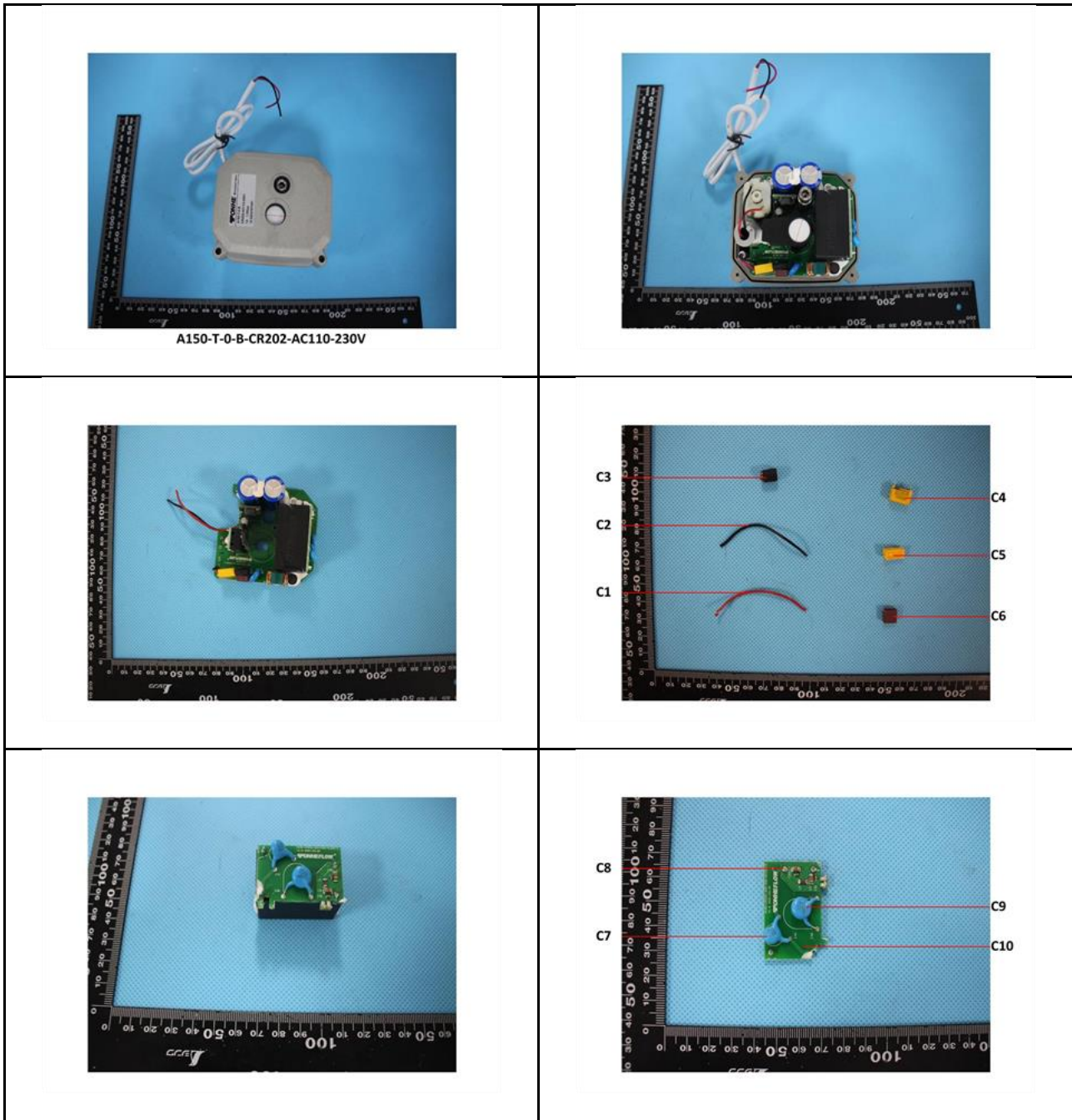
Unless otherwise agreed in writing, this document is issued by the Company subject to its General Conditions of Service printed overleaf, available on request or accessible at <http://www.sgs.com/en/Terms-and-Conditions.aspx> and, for electronic format documents, subject to Terms and Conditions for Electronic Documents at <http://www.sgs.com/en/Terms-and-Conditions/Terms-e-Document.aspx>. Attention is drawn to the limitation of liability, indemnification and jurisdiction issues defined therein. Any holder of this document is advised that information contained hereon reflects the Company's findings at the time of its intervention only and within the limits of Client's instructions, if any. The Company's sole responsibility is to its Client and this document does not exonerate parties to a transaction from exercising all their rights and obligations under the transaction documents. This document cannot be reproduced except in full, without prior written approval of the Company. Any unauthorized alteration, forgery or falsification of the content or appearance of this document is unlawful and offenders may be prosecuted to the fullest extent of the law. Unless otherwise stated the results shown in this test report refer only to the sample(s) tested.

Attention: To check the authenticity of testing / inspection report & certificate, please contact us at telephone: (86-755) 8307 1443, or email: CN.Doccheck@sgs.com

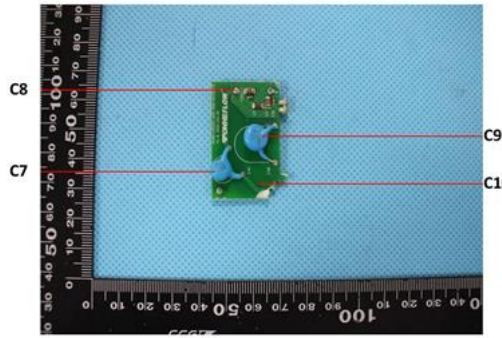
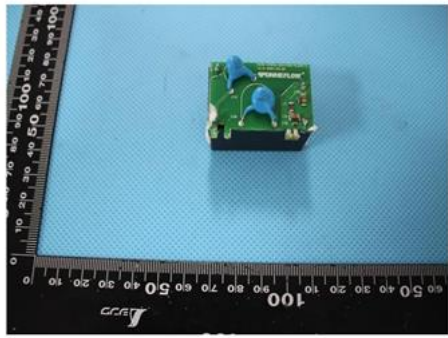
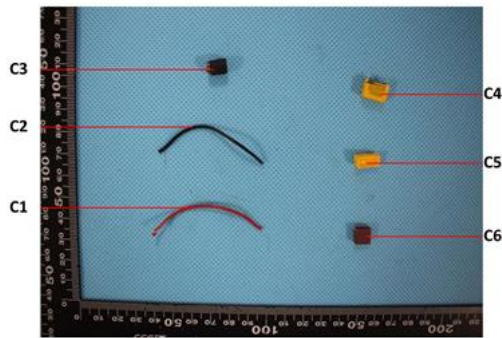
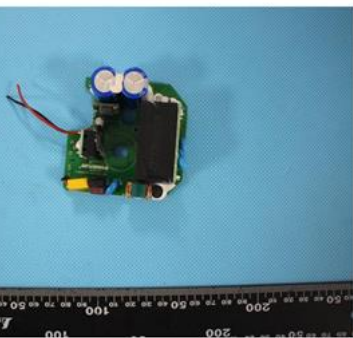


Unless otherwise agreed in writing, this document is issued by the Company subject to its General Conditions of Service printed overleaf, available on request or accessible at <http://www.sgs.com/en/Terms-and-Conditions.aspx> and, for electronic format documents, subject to Terms and Conditions for Electronic Documents at <http://www.sgs.com/en/Terms-and-Conditions/Terms-e-Document.aspx>. Attention is drawn to the limitation of liability, indemnification and jurisdiction issues defined therein. Any holder of this document is advised that information contained hereon reflects the Company's findings at the time of its intervention only and within the limits of Client's instructions, if any. The Company's sole responsibility is to its Client and this document does not exonerate parties to a transaction from exercising all their rights and obligations under the transaction documents. This document cannot be reproduced except in full, without prior written approval of the Company. Any unauthorized alteration, forgery or falsification of the content or appearance of this document is unlawful and offenders may be prosecuted to the fullest extent of the law. Unless otherwise stated the results shown in this test report refer only to the sample(s) tested.

Attention: To check the authenticity of testing / inspection report & certificate, please contact us at telephone: (86-755) 8307 1443, or email: CN.Doccheck@sgs.com

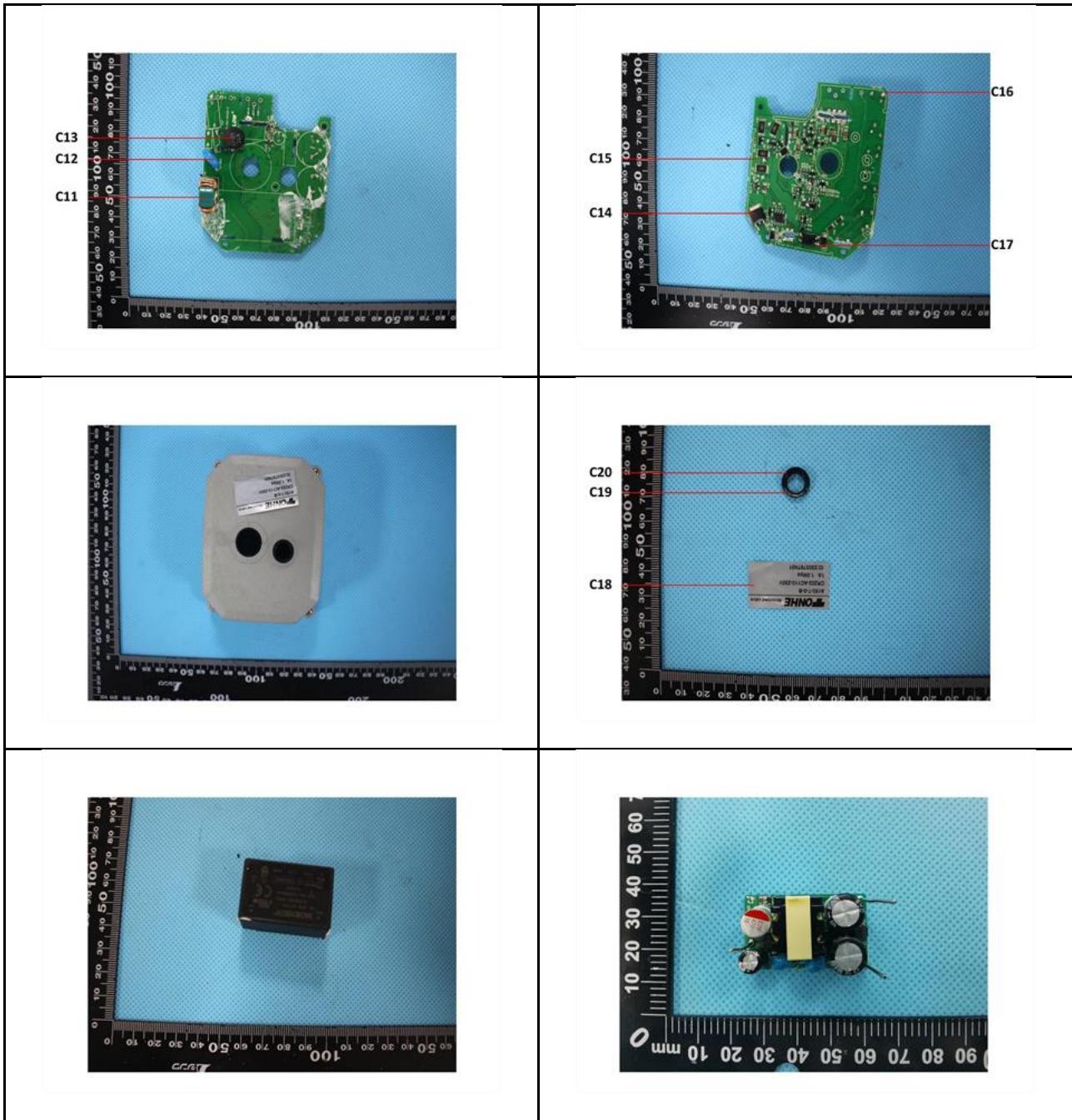


A150-T-0-B-CR202-AC110-230V



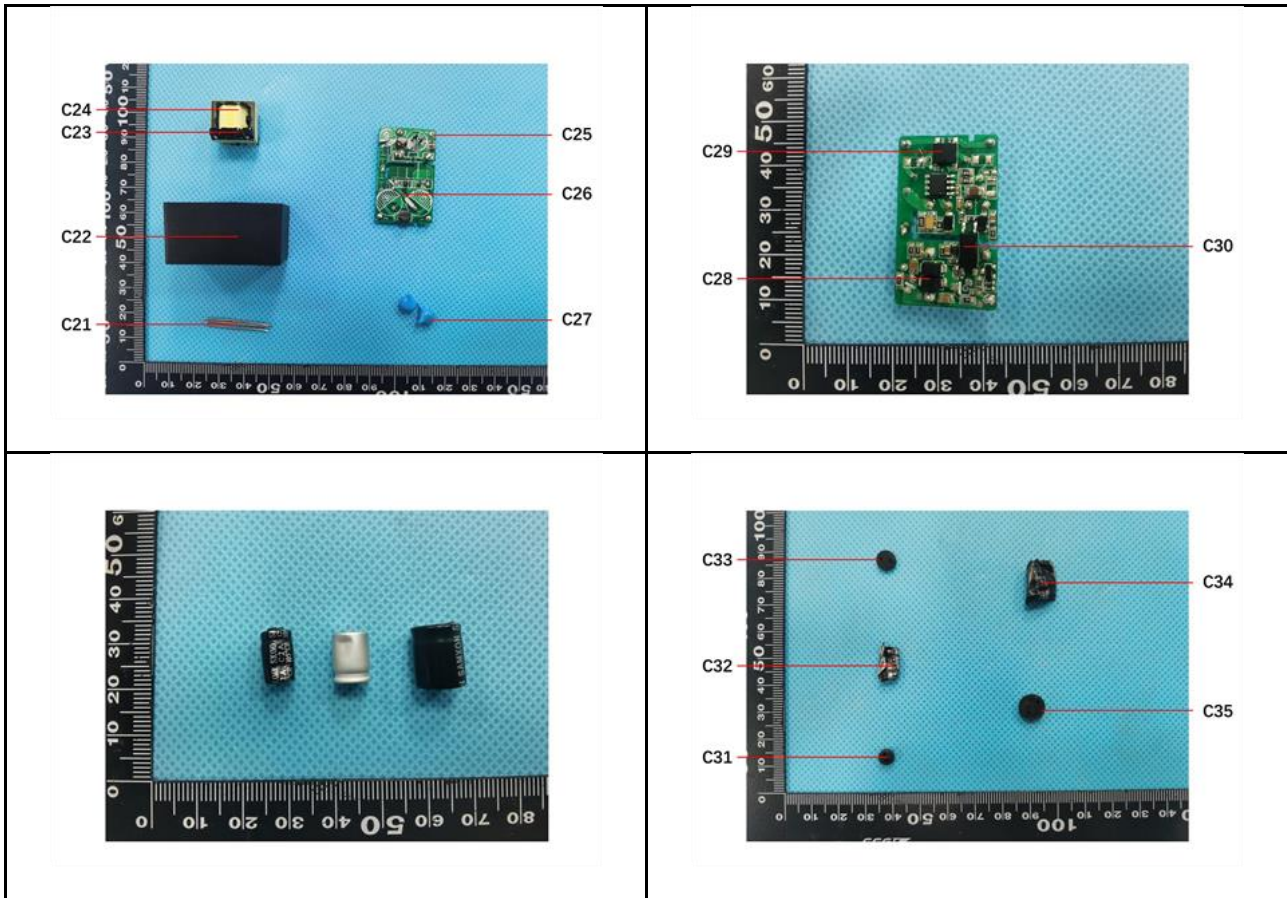
Unless otherwise agreed in writing, this document is issued by the Company subject to its General Conditions of Service printed overleaf, available on request or accessible at <http://www.sgs.com/en/Terms-and-Conditions.aspx> and, for electronic format documents, subject to Terms and Conditions for Electronic Documents at <http://www.sgs.com/en/Terms-and-Conditions/Terms-e-Document.aspx>. Attention is drawn to the limitation of liability, indemnification and jurisdiction issues defined therein. Any holder of this document is advised that information contained hereon reflects the Company's findings at the time of its intervention only and within the limits of Client's instructions, if any. The Company's sole responsibility is to its Client and this document does not exonerate parties to a transaction from exercising all their rights and obligations under the transaction documents. This document cannot be reproduced except in full, without prior written approval of the Company. Any unauthorized alteration, forgery or falsification of the content or appearance of this document is unlawful and offenders may be prosecuted to the fullest extent of the law. Unless otherwise stated the results shown in this test report refer only to the sample(s) tested.

Attention: To check the authenticity of testing / inspection report & certificate, please contact us at telephone: (86-755) 8307 1443, or email: CN.Doccheck@sgs.com



Unless otherwise agreed in writing, this document is issued by the Company subject to its General Conditions of Service printed overleaf, available on request or accessible at <http://www.sgs.com/en/Terms-and-Conditions.aspx> and, for electronic format documents, subject to Terms and Conditions for Electronic Documents at <http://www.sgs.com/en/Terms-and-Conditions/Terms-e-Document.aspx>. Attention is drawn to the limitation of liability, indemnification and jurisdiction issues defined therein. Any holder of this document is advised that information contained hereon reflects the Company's findings at the time of its intervention only and within the limits of Client's instructions, if any. The Company's sole responsibility is to its Client and this document does not exonerate parties to a transaction from exercising all their rights and obligations under the transaction documents. This document cannot be reproduced except in full, without prior written approval of the Company. Any unauthorized alteration, forgery or falsification of the content or appearance of this document is unlawful and offenders may be prosecuted to the fullest extent of the law. Unless otherwise stated the results shown in this test report refer only to the sample(s) tested.

Attention: To check the authenticity of testing / inspection report & certificate, please contact us at telephone: (86-755) 8307 1443, or email: CN.Doccheck@sgs.com



SGS authenticate the photo on original report only

*** End of Report ***



Unless otherwise agreed in writing, this document is issued by the Company subject to its General Conditions of Service printed overleaf, available on request or accessible at <http://www.sgs.com/en/Terms-and-Conditions.aspx> and, for electronic format documents, subject to Terms and Conditions for Electronic Documents at <http://www.sgs.com/en/Terms-and-Conditions/Terms-e-Document.aspx>. Attention is drawn to the limitation of liability, indemnification and jurisdiction issues defined therein. Any holder of this document is advised that information contained hereon reflects the Company's findings at the time of its intervention only and within the limits of Client's instructions, if any. The Company's sole responsibility is to its Client and this document does not exonerate parties to a transaction from exercising all their rights and obligations under the transaction documents. This document cannot be reproduced except in full, without prior written approval of the Company. Any unauthorized alteration, forgery or falsification of the content or appearance of this document is unlawful and offenders may be prosecuted to the fullest extent of the law. Unless otherwise stated the results shown in this test report refer only to the sample(s) tested.

Attention: To check the authenticity of testing / inspection report & certificate, please contact us at telephone: (86-755) 8307 1443, or email: CN.Doccheck@sgs.com