



Test Report

NTS2508191R

Date: Aug.27, 2025

Page 1 of 12

**Applicant :** Dongguan Mozhong Technology Co., Ltd.

**Address :** Room 702, Building 1, No. 118, Shaxin Road, Tangxia Town, Dongguan City, Guangdong Province

**Manufacturer :** Dongguan Mozhong Technology Co., Ltd.

**Address :** Room 702, Building 1, No. 118, Shaxin Road, Tangxia Town, Dongguan City, Guangdong Province

The following sample(s) was/were submitted and identified on behalf of the clients as : Lithium Battery  
Model No. :6060100,454261,103450,505060,104050,955465,606090,103665,126090,1260100,9373129  
Client Ref. Info.: N/A  
Trade mark: LUNKE

**Date of Sample Received :** Aug.19, 2025

**Testing Period :** Aug.19, 2025-Aug.27, 2025

**Test Requested :** Selected test(s) as requested by client.

**Test Method :** Please refer to next page(s).

**Test Results :** Please refer to next page(s).

**Conclusion :** Based on the performed tests on submitted sample(s), the results of Lead, Mercury, Cadmium, Hexavalent chromium, Polybrominated biphenyls (PBBs), Polybrominated diphenyl ethers (PBDEs), DEHP, BBP, DBP, DIBP comply with the limits as set RoHS Directive 2011/65/EU and its amendment directive 2015/863/EU.

Signed for and on behalf of  
**Shenzhen NOWD Testing Services Co., Ltd.**

*Jeremy Xie*

Jeremy Xie  
Approved Signatory



### Restriction of Hazardous Substances Directive (RoHS), (EU) 2015/863 & 2011/65/EU

List of Analytes and their Corresponding Test Methods [ European Council Directive (EU) 2015/863 & 2011/65/EU ] :

Name of Analytes		Test Method(s)
<b>Pb</b>	Lead (Pb)	With reference to IEC 62321-3-1:2013; by ICP-OES.
<b>Cd</b>	Cadmium (Cd)	
<b>Hg</b>	Mercury (Hg)	With reference to IEC 62321-4:2013+ A1:2017; by ICP-OES.
<b>Cr<sup>6+</sup></b>	Chromium VI (Cr VI)	<u>Metal</u> : With reference to IEC 62321- 5:2013. <u>Polymers &amp; Electronics</u> : With reference to IEC 62321-7-1:2015; IEC 62321-7-2:2017. using UV-Vis.
<b>PBBs</b>	Polybrominated Biphenyls (Sum of PBBs)	With reference to IEC 62321-6:2015, by GC-MS.
	Bromobiphenyls	
	Dibromobiphenyls	
	Tribromobiphenyls	
	Tetrabromobiphenyls	
	Pentabromobiphenyls	
	Hexabromobiphenyls	
	Heptabromobiphenyls	
	Octabromobiphenyls	
	Nonabromobiphenyls	
	Decabromobiphenyl	
<b>PBDEs</b>	Polybrominated Diphenyl Ethers (Sum of PBDEs)	
	Bromodiphenyl ethers	
	Dibromodiphenyl ethers	
	Tribromodiphenyl ethers	
	Tetrabromodiphenyl ethers	
	Pentabromodiphenyl ethers	
	Hexabromodiphenyl ethers	
	Heptabromodiphenyl ethers	
	Octabromodiphenyl ethers	
	Nonabromodiphenyl ethers	
	Decabromodiphenyl ether	



List of Analytes and their Corresponding Test Methods [ European Council Directive (EU) 2015/863 & 2011/65/EU ] :

Name of Analytes		Test Method(s)
<b>Phthalate</b>	Bis-(2-ethylhexyl) Phthalate ( <b>DEHP</b> )	With reference to IEC 62321-8:2017. by GC-MS
	Benzylbutyl Phthalate ( <b>BBP</b> )	
	Dibutyl Phthalate ( <b>DBP</b> )	
	Diisobutyl phthalate ( <b>DIBP</b> )	

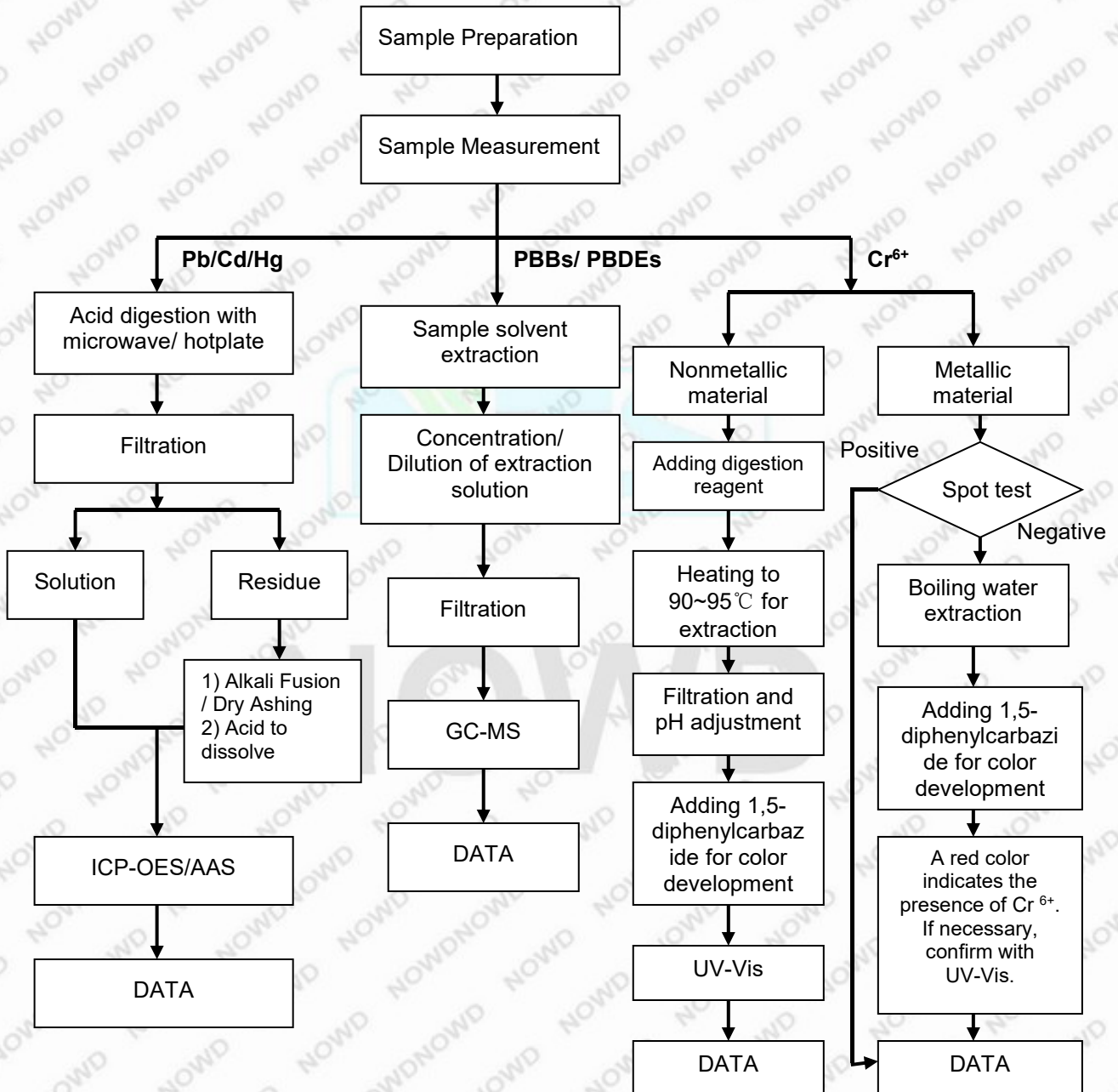


NOWD



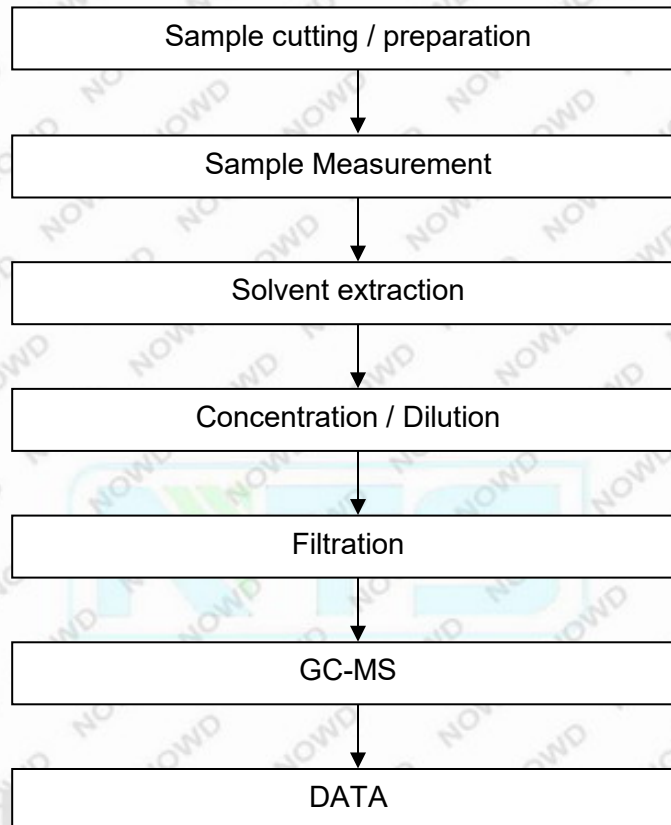
### RoHS Testing Flow Chart

- 1) Name of the person who made testing: Vito Ma
- 2) Name of the person in charge of testing: Sienna Cao
- 3) These samples were dissolved totally by pre-conditioning method according to below flow chart (Cr6+ and PBBs/ PBDEs test method excluded).



Phthalates Testing Flow Chart

- 1) Name of the person who made testing: Vito Ma
- 2) Name of the person in charge of testing: Sienna Cao



### Test Result

Part No.	Part Description	Restricted Substances	Results (mg/kg)		Conclusion (P/F)
			EDXRF	Chemical testing	
1	Black plastic (wire insulation)	Cd	BL	/	P
		Pb	BL	/	P
		Hg	BL	/	P
		Cr(VI)	BL	/	P
		PBBs	BL	/	P
		PBDEs	BL	/	P
		DEHP	/	N.D.	P
		DBP	/	N.D.	P
		BBP	/	N.D.	P
DIBP	/	N.D.	P		
2	Red plastic (wire insulation)	Cd	BL	/	P
		Pb	BL	/	P
		Hg	BL	/	P
		Cr(VI)	BL	/	P
		PBBs	BL	/	P
		PBDEs	BL	/	P
		DEHP	/	N.D.	P
		DBP	/	N.D.	P
		BBP	/	N.D.	P
DIBP	/	N.D.	P		
3	Silvery wire	Cd	BL	/	P
		Pb	BL	/	P
		Hg	BL	/	P
		Cr(VI)	BL	/	P
		PBBs	/	/	P
		PBDEs	/	/	P
		DEHP	/	/	P
		DBP	/	/	P
		BBP	/	/	P
DIBP	/	/	P		
4	Yellow translucent sticker	Cd	BL	/	P
		Pb	BL	/	P
		Hg	BL	/	P
		Cr(VI)	BL	/	P
		PBBs	BL	/	P
		PBDEs	BL	/	P
		DEHP	/	N.D.	P
		DBP	/	N.D.	P
		BBP	/	N.D.	P
DIBP	/	N.D.	P		

## Test Report

NTS2508191R

Date: Aug.27, 2025

Page 7 of 12

Part No.	Part Description	Restricted Substances	Results (mg/kg)		Conclusion (P/F)
			EDXRF	Chemical testing	
5	Black IC	Cd	BL	/	P
		Pb	BL	/	P
		Hg	BL	/	P
		Cr(VI)	BL	/	P
		PBBs	BL	/	P
		PBDEs	BL	/	P
		DEHP	/	N.D.	P
		DBP	/	N.D.	P
		BBP	/	N.D.	P
6	Black IC	Cd	BL	/	P
		Pb	BL	/	P
		Hg	BL	/	P
		Cr(VI)	BL	/	P
		PBBs	BL	/	P
		PBDEs	BL	/	P
		DEHP	/	N.D.	P
		DBP	/	N.D.	P
		BBP	/	N.D.	P
7	Black SMD resistance	Cd	BL	/	P
		Pb	BL	/	P
		Hg	BL	/	P
		Cr(VI)	BL	/	P
		PBBs	BL	/	P
		PBDEs	BL	/	P
		DEHP	/	N.D.	P
		DBP	/	N.D.	P
		BBP	/	N.D.	P
8	Brown capacitance	Cd	BL	/	P
		Pb	BL	/	P
		Hg	BL	/	P
		Cr(VI)	BL	/	P
		PBBs	BL	/	P
		PBDEs	BL	/	P
		DEHP	/	N.D.	P
		DBP	/	N.D.	P
		BBP	/	N.D.	P
DIBP	/	N.D.	P		



## Test Report

NTS2508191R

Date: Aug.27, 2025

Page 8 of 12

Part No.	Part Description	Restricted Substances	Results (mg/kg)		Conclusion (P/F)
			EDXRF	Chemical testing	
9	Silvery metal	Cd	BL	/	P
		Pb	BL	/	P
		Hg	BL	/	P
		Cr(VI)	BL	/	P
		PBBs	/	/	P
		PBDEs	/	/	P
		DEHP	/	/	P
		DBP	/	/	P
		BBP	/	/	P
10	Silvery metal	Cd	BL	/	P
		Pb	BL	/	P
		Hg	BL	/	P
		Cr(VI)	BL	/	P
		PBBs	/	/	P
		PBDEs	/	/	P
		DEHP	/	/	P
		DBP	/	/	P
		BBP	/	/	P
11	Solder	Cd	BL	/	P
		Pb	BL	/	P
		Hg	BL	/	P
		Cr(VI)	BL	/	P
		PBBs	/	/	P
		PBDEs	/	/	P
		DEHP	/	/	P
		DBP	/	/	P
		BBP	/	/	P
12	Green PCB	Cd	BL	/	P
		Pb	BL	/	P
		Hg	BL	/	P
		Cr(VI)	BL	/	P
		PBBs	BL	/	P
		PBDEs	BL	/	P
		DEHP	/	N.D.	P
		DBP	/	N.D.	P
		BBP	/	N.D.	P
DIBP	/	N.D.	P		



## Test Report

NTS2508191R

Date: Aug.27, 2025

Page 9 of 12

Part No.	Part Description	Restricted Substances	Results (mg/kg)		Conclusion (P/F)
			EDXRF	Chemical testing	
13	Aluminum foil	Cd	BL	/	P
		Pb	BL	/	P
		Hg	BL	/	P
		Cr(VI)	BL	/	P
		PBBs	BL	/	P
		PBDEs	BL	/	P
		DEHP	/	N.D.	P
		DBP	/	N.D.	P
		BBP	/	N.D.	P
		DIBP	/	N.D.	P

Note:

-mg/kg = milligram per kilogram = ppm

-N.D. = Not detected (&lt;MDL)

-BL=Less than screening limits of XRF

-D = DETECTED = Inconclusive

-P = PASS

-F = FAIL

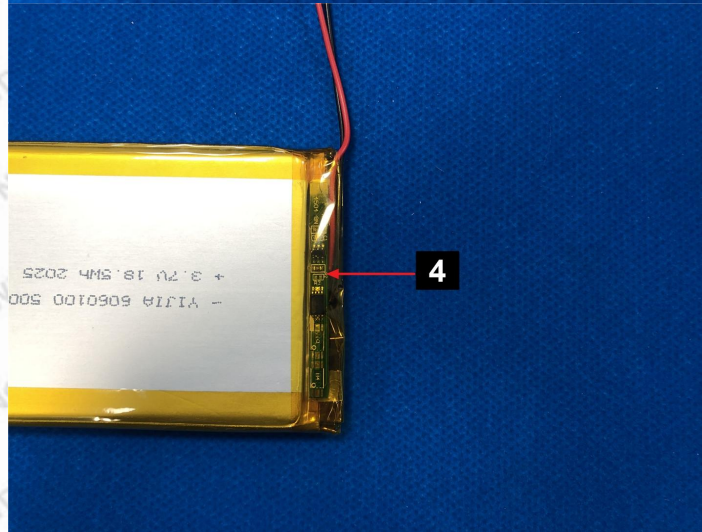
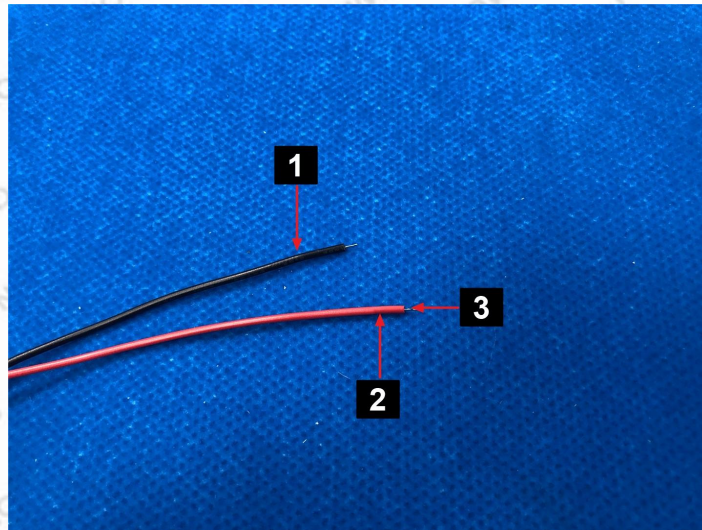
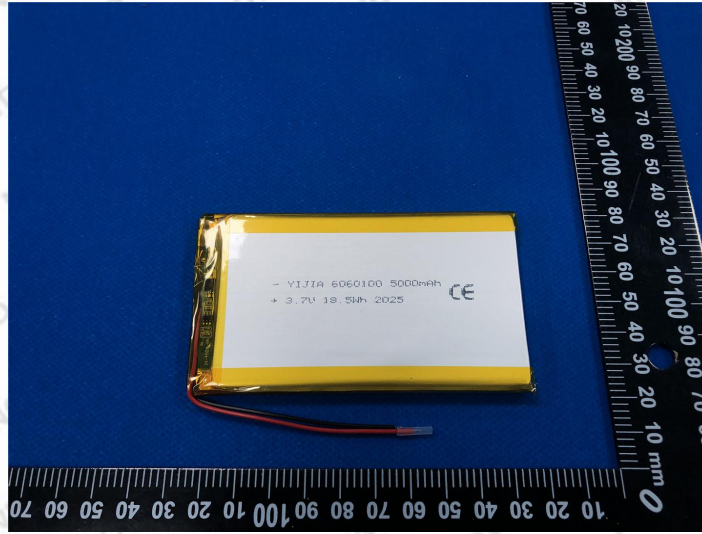
-/= Not available

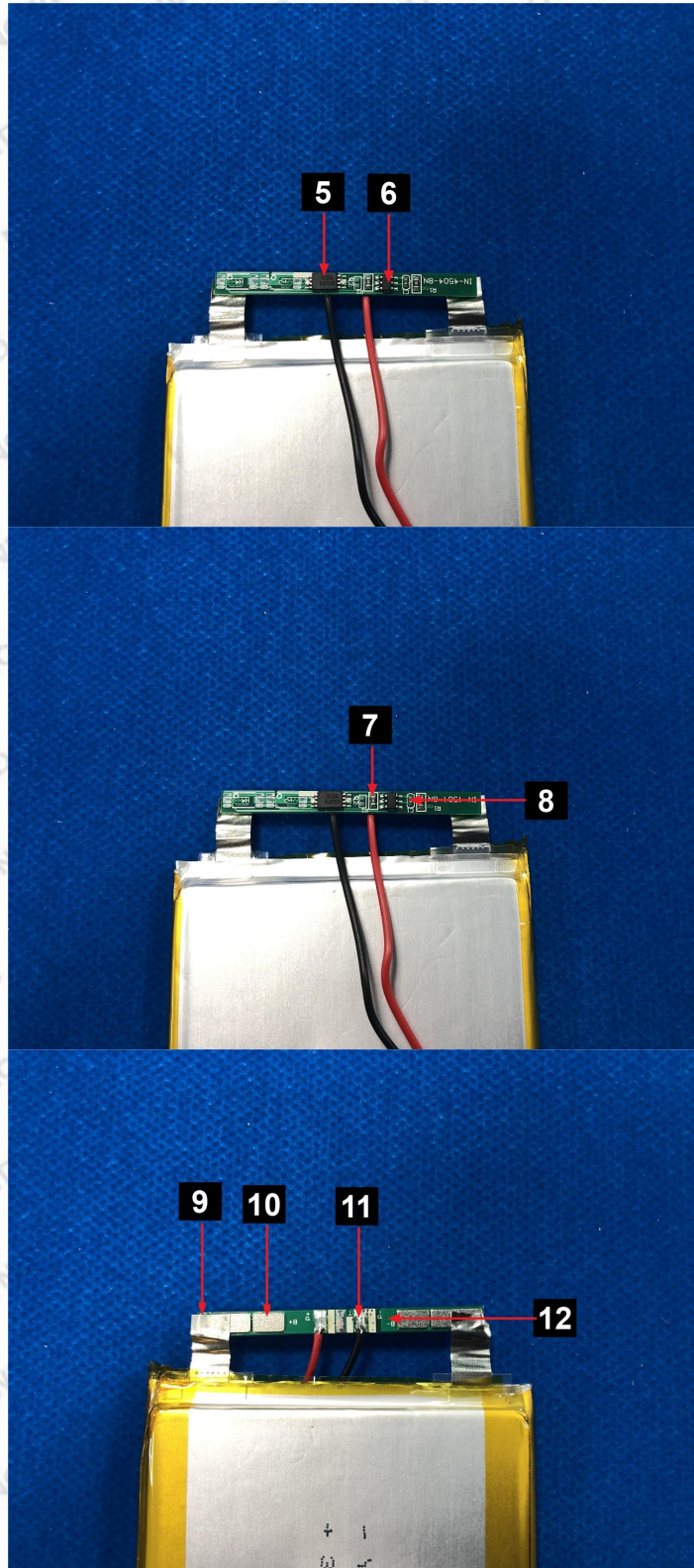


# NOWD



Photo(s) of the sample(s)







-- End of Report--



NOWD

