



Report No.: **33260930089**

2026-5-8

Page 1 of 15

Applicant: SHENZHEN LINWEAR INNOVATION TECHNOLOGY CO.,LTD.
Address: ROOM 3007,3008,3009,3010,BUILDING B,HONGRONGYUAN NORTH STATION CENTER,NORTH STATION COMMUNITY,MINZHISTREET,LONGHUA DISTRICT, SHENZHEN
Manufacturer: SHENZHEN LINWEAR INNOVATION TECHNOLOGY CO.,LTD.
Address: ROOM 3007,3008,3009,3010,BUILDING B,HONGRONGYUAN NORTH STATION CENTER,NORTH STATION COMMUNITY,MINZHISTREET,LONGHUA DISTRICT, SHENZHEN

The following sample(s) was /were submitted and identified on behalf of the clients as:

Sample Name: SmartWatch
Sample Model: LG116
Sample Received Date: Apr.03,2026
Testing Period: Apr.03,2026 to Apr.24,2026



**BUREAU
VERITAS**

Report No.: **33260930089**

2026-5-8

Page 2 of 15

Summary of Test Results:

Test Requirement	Conclusion
European RoHS Directive 2011/65/EU and amendment (EU) 2015/863 on the restriction of the use of certain hazardous substances in electrical and electronic equipment & EN IEC 63000:2018 Technical documentation for the assessment of electrical and electronic products with respect to the restriction of hazardous substances.	
1. To determine Lead (Pb), Cadmium(Cd), Mercury(Hg), Hexavalent Chromium(Cr(VI)), Polybrominated Biphenyls (PBBs) and Polybrominated DiphenylEthers (PBDEs)content by screening test and chemical test.	Pass
2. To determine Phthalates (DBP, BBP, DEHP, DIBP) content by chemical test.	Pass

Notes:At the request of the client, the sample was evaluated the above test of the client’s testing requirement.

Approved By:

Rui Hui





Test Method:

A. Screening test by XRF spectroscopy

XRF Screening Limits for Regulated Elements in Various Matrices according to IEC 62321-3-1:2013

Element	Screening limit (mg/kg)			MDL	
	Polymer Materials	Metallic Materials	Composite Materials	Polymers	Other material
Pb	$BL \leq 700 - 3\sigma \leq X < 1300 + 3\sigma \leq OL$	$BL \leq 700 - 3\sigma \leq X < 1300 + 3\sigma \leq OL$	$BL \leq 500 - 3\sigma \leq X < 1500 + 3\sigma \leq OL$	10mg/kg	50mg/kg
Cd	$BL \leq 70 - 3\sigma \leq X < 130 + 3\sigma \leq OL$	$BL \leq 70 - 3\sigma \leq X < 130 + 3\sigma \leq OL$	$LOD < X < 150 + 3\sigma \leq OL$	10mg/kg	50mg/kg
Hg	$BL \leq 700 - 3\sigma \leq X < 1300 + 3\sigma \leq OL$	$BL \leq 700 - 3\sigma \leq X < 1300 + 3\sigma \leq OL$	$BL \leq 500 - 3\sigma \leq X < 1500 + 3\sigma \leq OL$	10mg/kg	50mg/kg
Cr	$BL \leq 700 - 3\sigma < X$	$BL \leq 700 - 3\sigma < X$	$BL \leq 500 - 3\sigma < X$	10mg/kg	50mg/kg
Br	$BL \leq 300 - 3\sigma < X$	--	$BL \leq 250 - 3\sigma < X$	10mg/kg	50mg/kg

- Note:**
- 1) BL = Under the XRF screening limit
 - 2) OL = Future chemical test will be conducted while result is above the screening limit
 - 3) X = The symbol "X" marks the region where further investigation is necessary
 - 4) 3σ = The reproducibility of analytical instruments
 - 5) MDL = Method Detection limit

B. Chemical Test

Test Item(s)	Test Method	Analysis Equipment(s)	MDL	Limit
Lead (Pb)	IEC 62321-5:2013	ICP-OES	2 mg/kg	1000mg/kg
Cadmium (Cd)	IEC 62321-5:2013	ICP-OES	2 mg/kg	100mg/kg
Mercury (Hg)	IEC 62321-4:2013+AMD1:2017	ICP-OES	2 mg/kg	1000mg/kg
Hexavalent Chromium Cr(VI)	IEC 62321-7-1:2015	UV-VIS	0.10 μ g/cm ²	1000mg/kg
	IEC 62321-7-2:2017		8 mg/kg	1000mg/kg
Polybrominated Biphenyls (PBBs)	IEC 62321-6:2015	GC-MS	5 mg/kg	1000mg/kg
Polybrominated Diphenyl Ethers (PBDEs)	IEC 62321-6:2015	GC-MS	5 mg/kg	1000mg/kg
Phthalate	IEC 62321-8:2017	GC-MS	30mg/kg	1000mg/kg



**BUREAU
VERITAS**

Report No.: **33260930089**

2026-5-8

Page 4 of 15

Test Results:

1. Cadmium (Cd), Lead (Pb), Mercury (Hg), Chromium (Cr) and Bromine (Br) content were measured with reference to IEC 62321-3-1:2013 by XRF spectroscopy and chemical confirmation test for RoHS restricted substances.

No.	XRF screening Result					Chemical confirm Result (mg/kg)	Conclusion
	Pb	Cd	Hg	Cr	Br		
1	BL	BL	BL	BL	BL	--	Pass
2	BL	BL	BL	X	BL	Cr ⁶⁺ : N.D.	Pass
3	BL	BL	BL	BL	--	--	Pass
4	BL	BL	BL	BL	BL	--	Pass
5	BL	BL	BL	BL	BL	--	Pass
6	BL	BL	BL	X	BL	Cr ⁶⁺ : N.D.	Pass
7	BL	BL	BL	BL	BL	--	Pass
8	BL	BL	BL	BL	BL	--	Pass
9	BL	BL	BL	BL	--	--	Pass
10	BL	BL	BL	BL	BL	--	Pass
11	BL	BL	BL	BL	BL	--	Pass
12	BL	BL	BL	BL	BL	--	Pass
13	BL	BL	BL	BL	BL	--	Pass
14	BL	BL	BL	BL	BL	--	Pass
15	BL	BL	BL	BL	BL	--	Pass
16	BL	BL	BL	BL	--	--	Pass
17	BL	BL	BL	BL	BL	--	Pass
18	BL	BL	BL	BL	BL	--	Pass
19	BL	BL	BL	BL	--	--	Pass
20	BL	BL	BL	BL	X	PBBs:N.D. PBDEs:N.D.	Pass
21	BL	BL	BL	BL	BL	--	Pass
22	BL	BL	BL	BL	BL	--	Pass
23	BL	BL	BL	BL	--	--	Pass
24	BL	BL	BL	BL	BL	--	Pass



**BUREAU
VERITAS**

Report No.: **33260930089**

2026-5-8

Page 5 of 15

No.	XRF screening Result					Chemical confirm Result (mg/kg)	Conclusion
	Pb	Cd	Hg	Cr	Br		
25	BL	BL	BL	BL	BL	--	Pass
26	BL	BL	BL	X	--	Cr ⁶⁺ : Negative	Pass
27	BL	BL	BL	BL	--	--	Pass
28	BL	BL	BL	BL	--	--	Pass
29	BL	BL	BL	BL	BL	--	Pass
30	BL	BL	BL	BL	BL	--	Pass
31	BL	BL	BL	BL	--	--	Pass
32	BL	BL	BL	BL	BL	--	Pass
33	BL	BL	BL	BL	BL	--	Pass
34	BL	BL	BL	X	--	Cr ⁶⁺ : Negative	Pass
35	BL	BL	BL	BL	--	--	Pass
36	BL	BL	BL	X	--	Cr ⁶⁺ : Negative	Pass
37	BL	BL	BL	BL	BL	--	Pass
38	BL	BL	BL	BL	BL	--	Pass
39	BL	BL	BL	BL	--	--	Pass
40	BL	BL	BL	BL	--	--	Pass
41	BL	BL	BL	BL	BL	--	Pass
42	BL	BL	BL	BL	BL	--	Pass
43	BL	BL	BL	BL	--	--	Pass
44	BL	BL	BL	BL	--	--	Pass
45	BL	BL	BL	BL	BL	--	Pass
46	BL	BL	BL	BL	BL	--	Pass
47	BL	BL	BL	BL	BL	--	Pass
48	BL	BL	BL	X	--	Cr ⁶⁺ : Negative	Pass
49	BL	BL	BL	BL	--	--	Pass
50	BL	BL	BL	BL	BL	--	Pass

2. Phthalate Content Test



**BUREAU
VERITAS**

Report No.: **33260930089**

2026-5-8

Page 6 of 15

Test Item(s)	Dibutyl Phthalate (DBP)	Butyl benzyl phthalate (BBP)	Di-(2-ethylhexyl) Phthalate (DEHP)	Diisobutyl phthalate (DIBP)	Conclusion
CAS No.	84-74-2	85-68-7	117-81-7	84-69-5	
Limit	1000	1000	1000	1000	
No.	Test Result (mg/kg)				
1+2+4	N.D.	N.D.	N.D.	N.D.	Pass
5+8+17	N.D.	N.D.	N.D.	N.D.	Pass
6+20+37	N.D.	N.D.	N.D.	N.D.	Pass
7+11+12	N.D.	N.D.	N.D.	N.D.	Pass
10	N.D.	N.D.	N.D.	N.D.	Pass
13+14+15	N.D.	N.D.	N.D.	N.D.	Pass
18+24+25	N.D.	N.D.	N.D.	N.D.	Pass
21+22+29	N.D.	N.D.	N.D.	N.D.	Pass
30+33+38	N.D.	N.D.	N.D.	N.D.	Pass
32+41+42	N.D.	N.D.	N.D.	N.D.	Pass
45+46	N.D.	N.D.	N.D.	N.D.	Pass
47+50	N.D.	N.D.	N.D.	N.D.	Pass



Report No.: **33260930089**

2026-5-8

Page 7 of 15

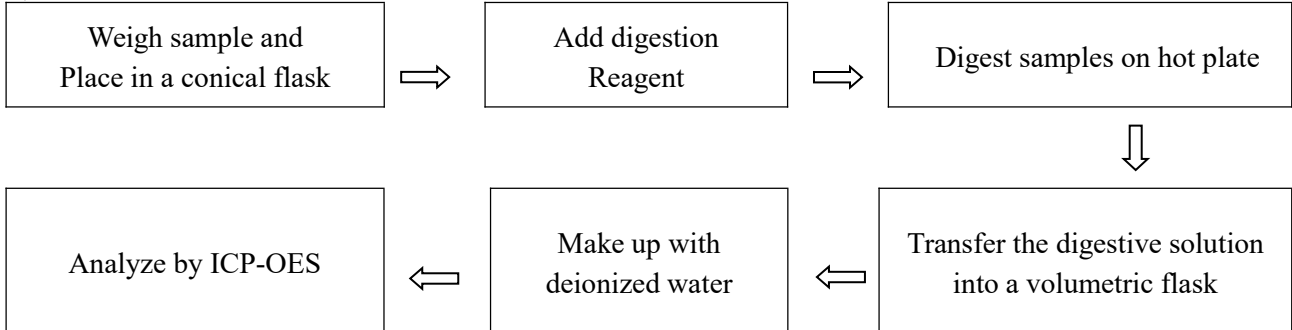
Remark:

- BL = The result is below the XRF screening limit
- OL = Over Limit
- X = Inconclusive, Future chemical test will be conducted
- mg/kg = milligram per kilogram = ppm
- N.D. = Not Detected(<MDL)
- MDL = Method Detection Limit
- Positive = A positive test result indicated the concentration of Cr(VI) is greater than threshold of 0.13 $\mu\text{g}/\text{cm}^2$ for boiling-water-extraction procedures by visual comparison / by UV-VIS Spectrophotometer analysis. The sample coating is considered to contain Cr(VI).
- Negative = A negative test result indicated the concentration of Cr(VI) is less than threshold of 0.10 $\mu\text{g}/\text{cm}^2$ for boiling-water-extraction procedures by UV-VIS Spectrophotometer analysis. The coating is considered a non-Cr(VI) based coating.
- The results shown in this XRF Screening report will differ based on various factors, including but not limited to, the sample size, thickness, area, surface flatness, equipment parameters and matrix effect (e.g. plastic, rubber, metal, glass, ceramic etc.). If the XRF Screening concentration exceeds, need further chemical testing by ICP-OES (for Cd, Pb, Hg), UV-Vis (for Cr(VI)) and GC-MS (for PBBs, PBDEs) is recommended to be performed.

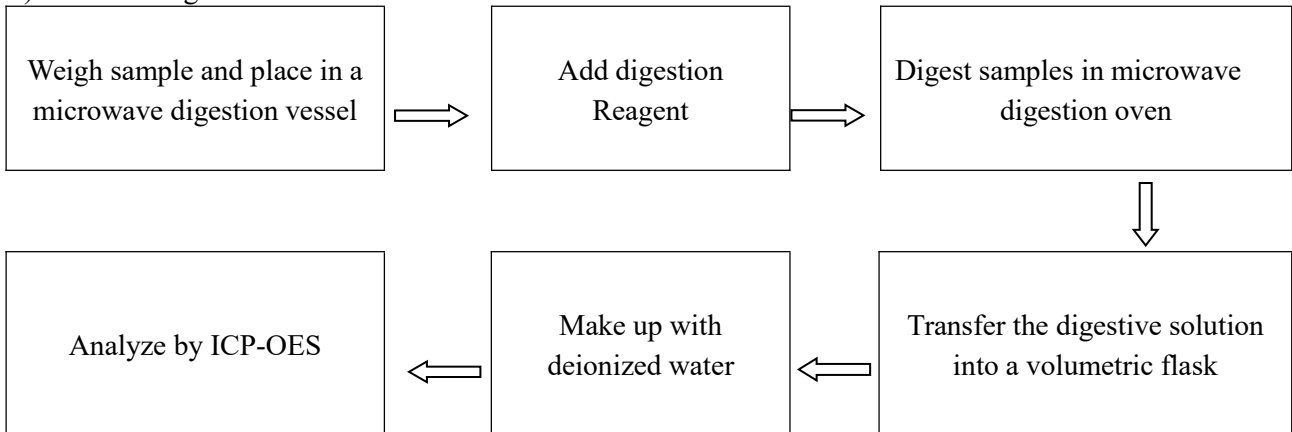


3. Test Process

1) Test for Cd/Pb Content



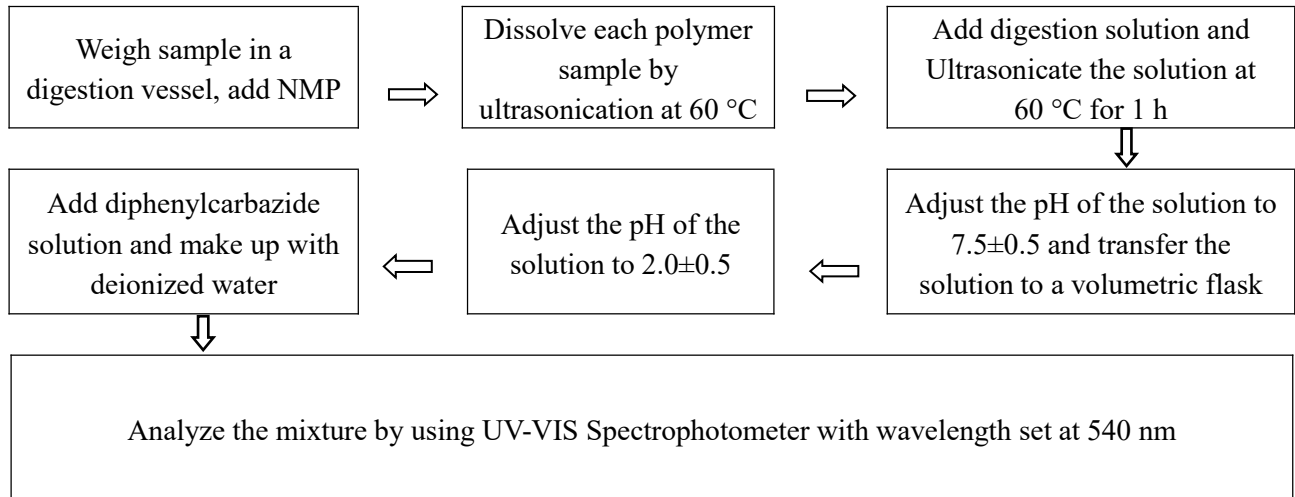
2) Test for Hg Content



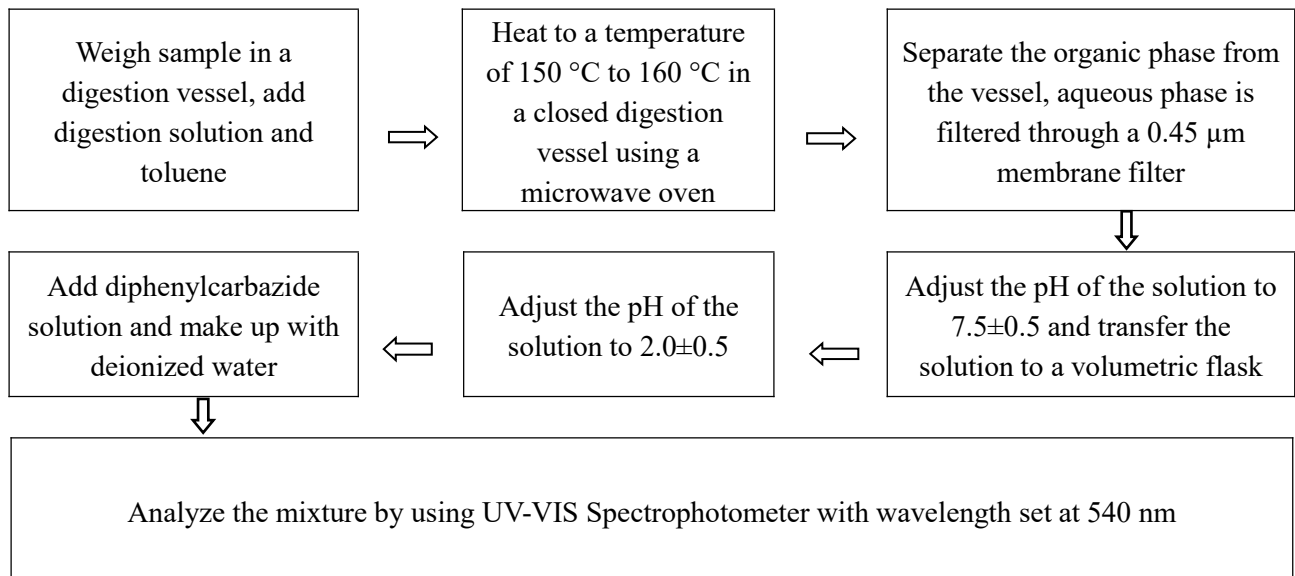


3) Test for Chromium (VI) Content

a. Soluble polymers:

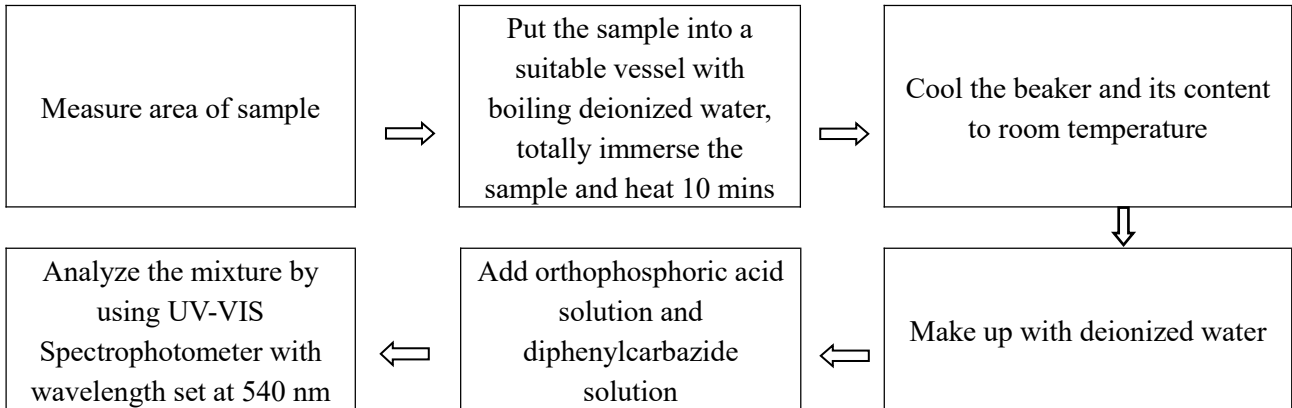


b. Insoluble/unknown polymers and electronics without Sb

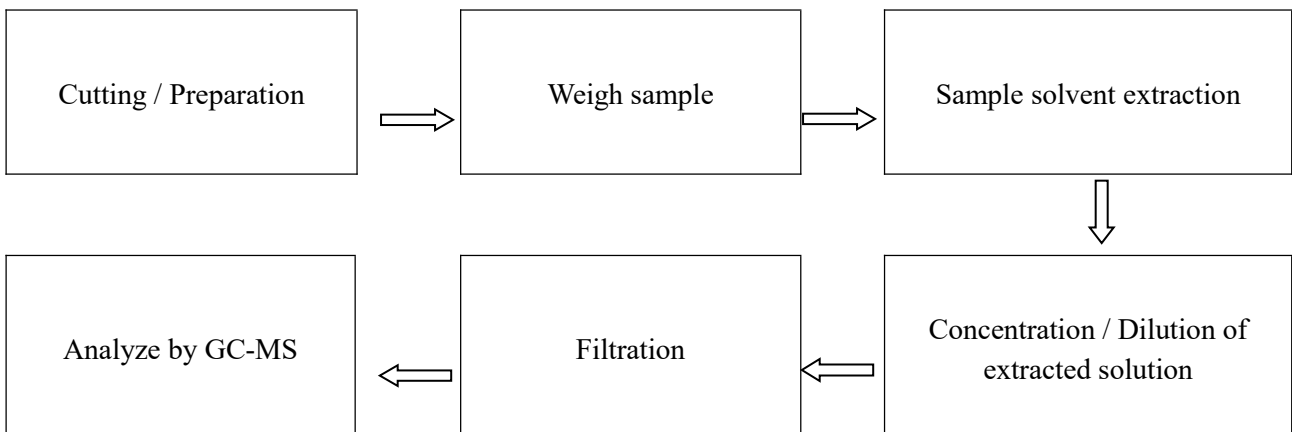




c. Metal material



4) Test for DBP, BBP, DEHP, DIBP, PBB, PBDE Content





**BUREAU
VERITAS**

Report No.: **33260930089**

2026-5-8

Page 11 of 15

Sample Description:

No.	Description
1	Orange plastic strap
2	Silver plastic fastening
3	Black glass display screen
4	Black plastic watch strap
5	White plastic fixation
6	Green PCB
7	Brown capacitor
8	Black plastic fixation
9	Silver metallic solder
10	Silver sponge
11	Brown capacitor
12	Black IC
13	Black capacitor
14	Black diode
15	Black inductor
16	Silver metal fixation
17	Black plastic fixation
18	Dark gray plastic connector
19	Silver metal contact pin
20	Blue PCB
21	Black plastic wire sheath
22	Red plastic wire sheath
23	Silver metal fixation
24	Silent black plastic fixation
25	Bright black plastic fixation
26	Silver metal fixator
27	Silver metal screws
28	Silver metal wire core
29	Black plastic wire sheath



**BUREAU
VERITAS**

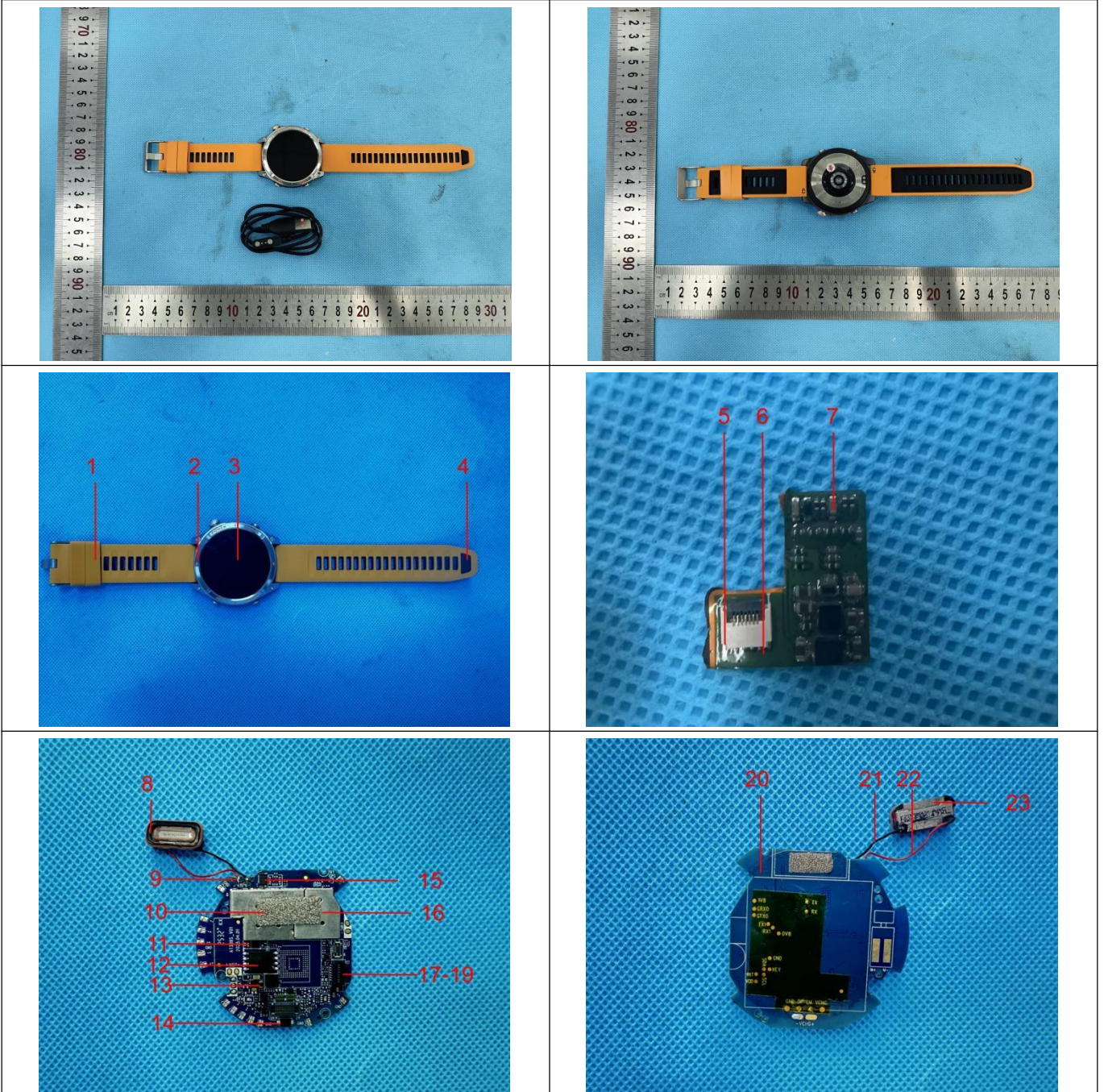
Report No.: **33260930089**

2026-5-8

Page 12 of 15

No.	Description
30	Transparent yellow tape
31	Silver metal aluminum film
32	Red plastic cable wire sheath
33	Yellowish-brown plastic fixation
34	Silver metal fixation
35	Silver metal crystal oscillator
36	Silver metal sheet
37	Black/Brown FPC
38	Black plastic sheath
39	Bronze metal sheet
40	Silver metal shaft
41	Black plastic wire sheath
42	Black plastic sheath
43	Silver metal fixation
44	Bronze-colored metal wire core
45	Green plastic wire sheath
46	Red plastic wire sheath
47	Orange plastic fixator
48	Silver metal magnet
49	Bronze-colored metal contact pin
50	Silver plastic buttons

Photograph(s) of Sample:



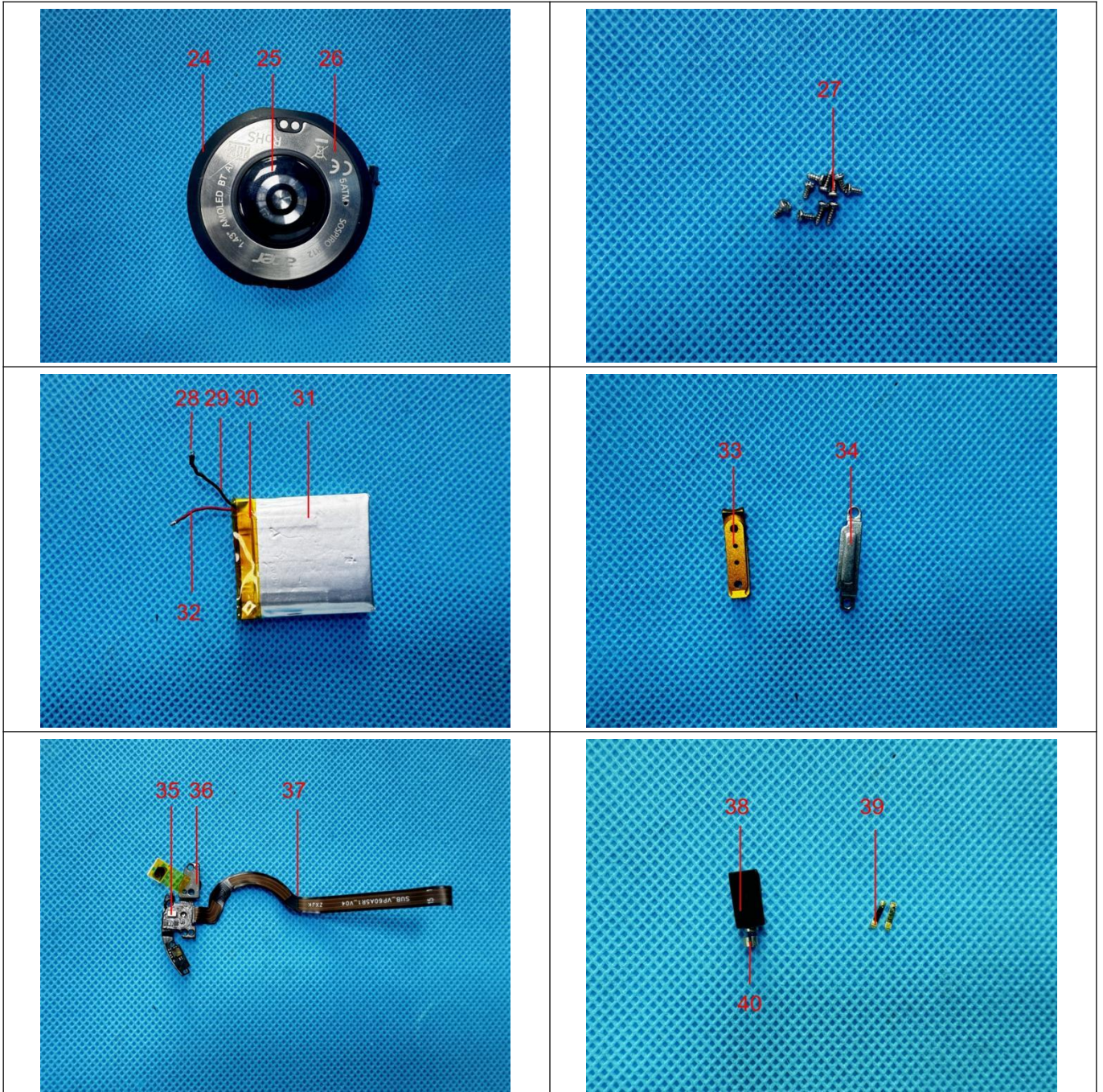


**BUREAU
VERITAS**

Report No.: **33260930089**

2026-5-8

Page 14 of 15



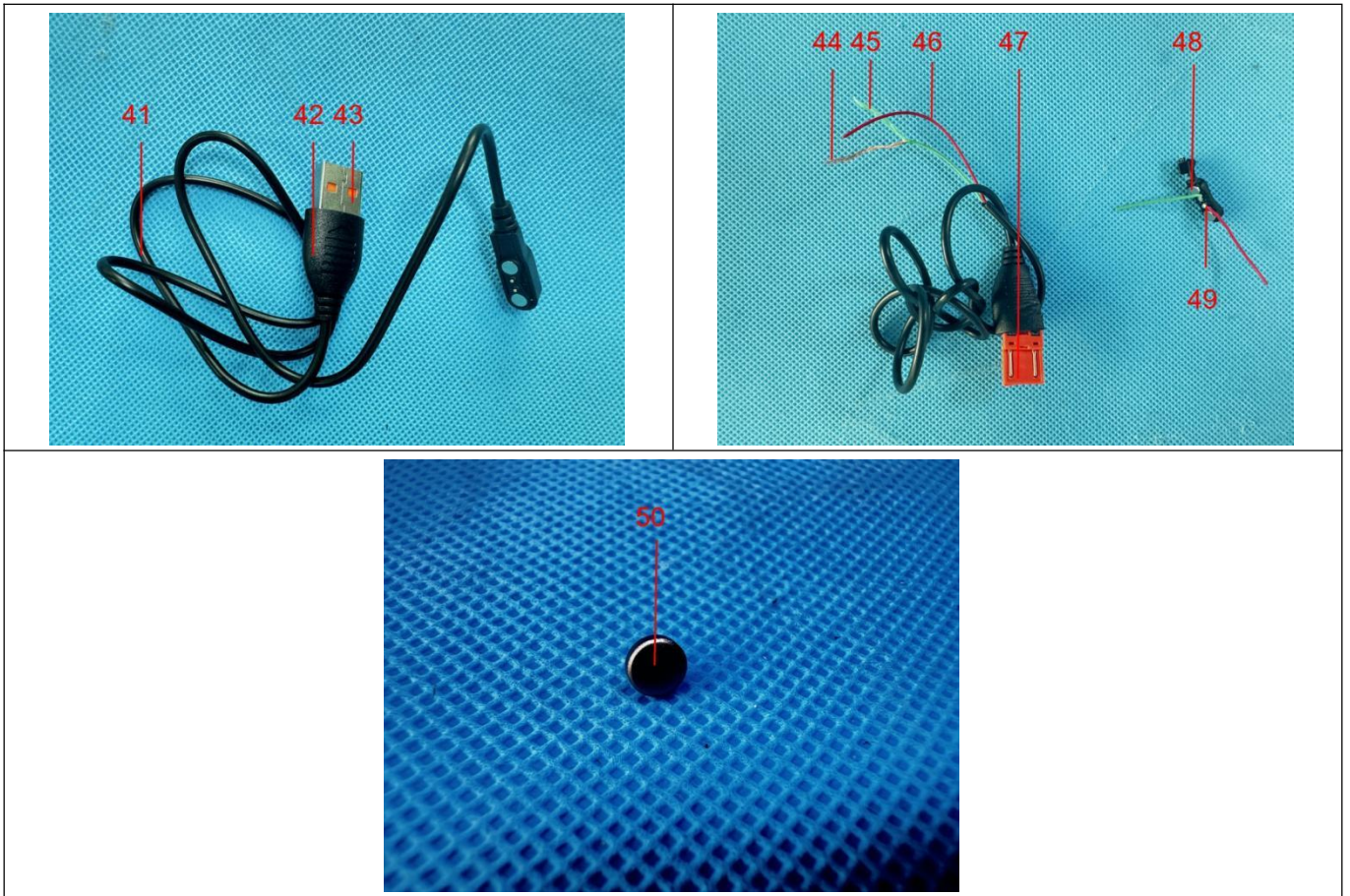


**BUREAU
VERITAS**

Report No.: **33260930089**

2026-5-8

Page 15 of 15



*** End of Report ***