



# Test Report

**Applicant's name**.....: Dongguan Chengxing Electronic Technology Co., Ltd  
**Address**.....: Room 401, Building 3, No. 31, Shibei Road, Fenggang Town, Dongguan City, Guangdong Province  
**Manufacturer** .....: Dongguan Chengxing Electronic Technology Co., Ltd  
**Address**.....: Room 401, Building 3, No. 31, Shibei Road, Fenggang Town, Dongguan City, Guangdong Province  
**Trade Mark**.....: N/A  
**Test item description** .....: SMART GLASSES  
**Model/Type reference**.....: CY01, CY02, CY03, CY05, CY06, CY07, CY08, CY09, CY10, CY01-CY10, CY01-A, CY01-B, CY01-C, CY01-D, CY01-E, CY01-F  
**Date of receipt of test item**.....: Jun. 30, 2025  
**Date(s) of performance of tests**.....: Jun. 30, 2025-Jul. 11, 2025  
**Date of report**.....: Jul. 11, 2025

**Test Requested:**

1. As specified by client ,to screen Lead(Pb),Cadmium(Cd),Mercury(Hg), Chromium(Cr)and Bromine(Br)in the submitted sample(s)by XRF.
2. As specified by client ,when screening results exceed the XRF screening limit in IEC62321:2013 Edition 1.0,further use of wet chemical methods are required to test Lead(Pb),Cadmium(Cd),Mercury(Hg),Hexavalent Chromium(Cr(VI)),Polybrominated Biphenyls(PBBs),Polybrominated Diphenyl Ethers(PBDEs),Polybrominated diphenyl ethers (PBDEs) and Phthalates such as Bis(2-ethylhexyl) phthalate (DEHP) ,Butyl benzyl phthalate (BBP), Dibutylphthalate (DBP) ,and Diisobutyl phthalate (DIBP) in the submitted sample(s).

**Test Results:** Pass

**Conclusion:**

The test results comply with the limits of RoHS 2.0 Directive (EU) 2015/863 amending Annex II to Directive 2011/65/EU.

Signed for and on behalf of Lintek.

*Jenny Wong*  
PSQ Executive



# Test Report

No.	Sample Description	Test item	XRF Result	ChemicalTest (mg/kg)	Conclusion
1	Plastic enclosure	Pb	BL	--	Pass
		Cd	BL	--	
		Hg	BL	--	
		Cr(Cr(VI))	BL	--	
		Br(PBBs&PBDEs)	BL	--	
		Phthalate(DBP\BBP \DEHP\DIBP)	--	N.D.	
2	USB wire	Pb	BL	--	Pass
		Cd	BL	--	
		Hg	BL	--	
		Cr(Cr(VI))	BL	--	
		Br(PBBs&PBDEs)	BL	--	
		Phthalate(DBP\BBP \DEHP\DIBP)	--	N.D.	
3	Metal of terminal	Pb	BL	--	Pass
		Cd	BL	--	
		Hg	BL	--	
		Cr(Cr(VI))	BL	--	
		Br(PBBs&PBDEs)	BL	--	
		Phthalate(DBP\BBP \DEHP\DIBP)	--	N.D.	
4	Plastic of terminal	Pb	BL	--	Pass
		Cd	BL	--	
		Hg	BL	--	
		Cr(Cr(VI))	BL	--	
		Br(PBBs&PBDEs)	BL	--	
		Phthalate(DBP\BBP \DEHP\DIBP)	--	N.D.	
5	Plastic of wire	Pb	BL	--	
		Cd	BL	--	

This Test Report is issued by the Company subject to its General Conditions of Service printed overleaf. Attention is drawn to the limitations of liability, indemnification and jurisdictional policies defined therein. The results shown in this test report refer only to the sample(s) tested unless otherwise stated and the sample(s) are retained for 30 days only. This Test Report cannot be reproduced, except in full, without prior written permission of the Company.

# Test Report

No.	Sample Description	Test item	XRF Result	ChemicalTest (mg/kg)	Conclusion
		Hg	BL	--	Pass
		Cr(Cr(VI))	BL	--	
		Br(PBBs&PBDEs)	BL	--	
		Phthalate(DBP\BBP \DEHP\DIBP)	--	N.D.	
6	Metal of wire	Pb	BL	--	Pass
		Cd	BL	--	
		Hg	BL	--	
		Cr(Cr(VI))	BL	--	
		Br(PBBs&PBDEs)	BL	--	
		Phthalate(DBP\BBP \DEHP\DIBP)	--	N.D.	
7	Lens	Pb	BL	--	Pass
		Cd	BL	--	
		Hg	BL	--	
		Cr(Cr(VI))	BL	--	
		Br(PBBs&PBDEs)	BL	--	
		Phthalate(DBP\BBP \DEHP\DIBP)	--	N.D.	
8	Plastic of red wire	Pb	BL	--	Pass
		Cd	BL	--	
		Hg	BL	--	
		Cr(Cr(VI))	BL	--	
		Br(PBBs&PBDEs)	BL	--	
		Phthalate(DBP\BBP \DEHP\DIBP)	--	N.D.	
9	Metal of red wire	Pb	BL	--	Pass
		Cd	BL	--	
		Hg	BL	--	
		Cr(Cr(VI))	BL	--	
		Br(PBBs&PBDEs)	BL	--	

This Test Report is issued by the Company subject to its General Conditions of Service printed overleaf. Attention is drawn to the limitations of liability, indemnification and jurisdictional policies defined therein. The results shown in this test report refer only to the sample(s) tested unless otherwise stated and the sample(s) are retained for 30 days only. This Test Report cannot be reproduced, except in full, without prior written permission of the Company.

# Test Report

No.	Sample Description	Test item	XRF Result	ChemicalTest (mg/kg)	Conclusion
		Phthalate(DBP\BBP \DEHP\DIBP)	--	N.D.	
10	Battery	Pb	BL	--	Pass
		Cd	BL	--	
		Hg	BL	--	
		Cr(Cr(VI))	BL	--	
		Br(PBBs&PBDEs)	BL	--	
		Phthalate(DBP\BBP \DEHP\DIBP)	--	N.D.	
11	Chip	Pb	BL	--	Pass
		Cd	BL	--	
		Hg	BL	--	
		Cr(Cr(VI))	BL	--	
		Br(PBBs&PBDEs)	BL	--	
		Phthalate(DBP\BBP \DEHP\DIBP)	--	N.D.	
12	Capacitor	Pb	BL	--	Pass
		Cd	BL	--	
		Hg	BL	--	
		Cr(Cr(VI))	BL	--	
		Br(PBBs&PBDEs)	BL	--	
		Phthalate(DBP\BBP \DEHP\DIBP)	--	N.D.	
13	PCB	Pb	BL	--	Pass
		Cd	BL	--	
		Hg	BL	--	
		Cr(Cr(VI))	BL	--	
		Br(PBBs&PBDEs)	BL	--	
		Phthalate(DBP\BBP \DEHP\DIBP)	--	N.D.	
14	Inductor	Pb	BL	--	Pass
		Cd	BL	--	

This Test Report is issued by the Company subject to its General Conditions of Service printed overleaf. Attention is drawn to the limitations of liability, indemnification and jurisdictional policies defined therein. The results shown in this test report refer only to the sample(s) tested unless otherwise stated and the sample(s) are retained for 30 days only. This Test Report cannot be reproduced, except in full, without prior written permission of the Company.

# Test Report

No.	Sample Description	Test item	XRF Result	ChemicalTest (mg/kg)	Conclusion
		Hg	BL	--	
		Cr(Cr(VI))	BL	--	
		Br(PBBs&PBDEs)	BL	--	
		Phthalate(DBP\BBP \DEHP\DIBP)	--	N.D.	

This Test Report is issued by the Company subject to its General Conditions of Service printed overleaf. Attention is drawn to the limitations of liability, indemnification and jurisdictional policies defined therein. The results shown in this test report refer only to the sample(s) tested unless otherwise stated and the sample(s) are retained for 30 days only. This Test Report cannot be reproduced, except in full, without prior written permission of the Company.

# Test Report

1. It is the result on total Br while test item on restricted substances in PBBs/PBDEs.It is the result on total Cr while test item on restricted substances is Cr(VI).
2. Screening test by XRF spectroscopy XRF screening limits in mg/kg for regulated elements according to IEC62321:2013 Ed.1 Sec.6 &AnnesD.

Element	Polymer Material	Metallic Material	Composite Material
Pb	$BL \leq 700 - 3\sigma \leq X < 1300 + 3\sigma$ $\leq OL$	$BL \leq 700 - 3\sigma \leq X < 1300 + 3\sigma$ $\leq OL$	$BL \leq 500 - 3\sigma \leq X < 1500 + 3\sigma$ $\leq OL$
Cd	$BL \leq 70 - 3\sigma \leq X < 130 + 3\sigma$ $\leq OL$	$BL \leq 70 - 3\sigma \leq X < 130 + 3\sigma$ $\leq OL$	$LOD < X < 150 + 3\sigma \leq OL$
Hg	$BL \leq 700 - 3\sigma \leq X < 1300 + 3\sigma$ $\leq OL$	$BL \leq 700 - 3\sigma \leq X < 1300 + 3\sigma$ $\leq OL$	$BL \leq 500 - 3\sigma \leq X < 1500 + 3\sigma$ $\leq OL$
Cr	$BL \leq 700 - 3\sigma < X$	$BL \leq 700 - 3\sigma < X$	$BL \leq 500 - 3\sigma < X$
Br	$BL \leq 300 - 3\sigma < X$	--	$BL \leq 250 - 3\sigma < X$

XRF detection limits in mg/kg for regulated elements in various material

Element	Polymer Material	Metallic Material	Composite Material
Pb	10	50	50
Cd	10	50	50
Hg	10	50	50
Cr	10	50	50
Br	10	50	50

- Note :**
- BL = Under the XRF screening limit
  - OL = Future chemical test will be conducted while result is above the screening limit
  - X = The symbol "X" marks the region where further investigation is necessary
  - 3σ = The reproducibility of analytical instruments
  - LOD = Detection limit

This Test Report is issued by the Company subject to its General Conditions of Service printed overleaf. Attention is drawn to the limitations of liability, indemnification and jurisdictional policies defined therein. The results shown in this test report refer only to the sample(s) tested unless otherwise stated and the sample(s) are retained for 30 days only. This Test Report cannot be reproduced, except in full, without prior written permission of the Company.

# Test Report

## 3. Wet chemical test

Test Item(s)	Test Method	Test Equipment	MDL
Pb	IEC62321-5:2013	ICP-AES	2
Cd	IEC62321-5:2013	ICP-AES	2
Hg	IEC62321-4:2013	ICP-AES	2
Cr(VI)	IEC62321-7-1:2015 IEC62321-7-2:2017	UV-Vis	2
PBB	IEC62321-6:2015	GC-MS	5
PBDE	IEC62321-6:2015	GC-MS	5
Dibutyl Phthalate(DBP)	IEC62321-8:2017	GC-MS	30
Benzylbutyl Phthalate (BBP)	IEC62321-8:2017	GC-MS	30
Di-(2-ethylhexyl) Phthalate(DEHP)	IEC62321-8:2017	GC-MS	30
Diisobutylhthalate (DIBP)	IEC62321-8:2017	GC-MS	30

**Note :** - mg/kg=ppm=0.0001%

-ND=Not Detected(<MDL)

- MDL = Method Detection Limit

-- = No Testing

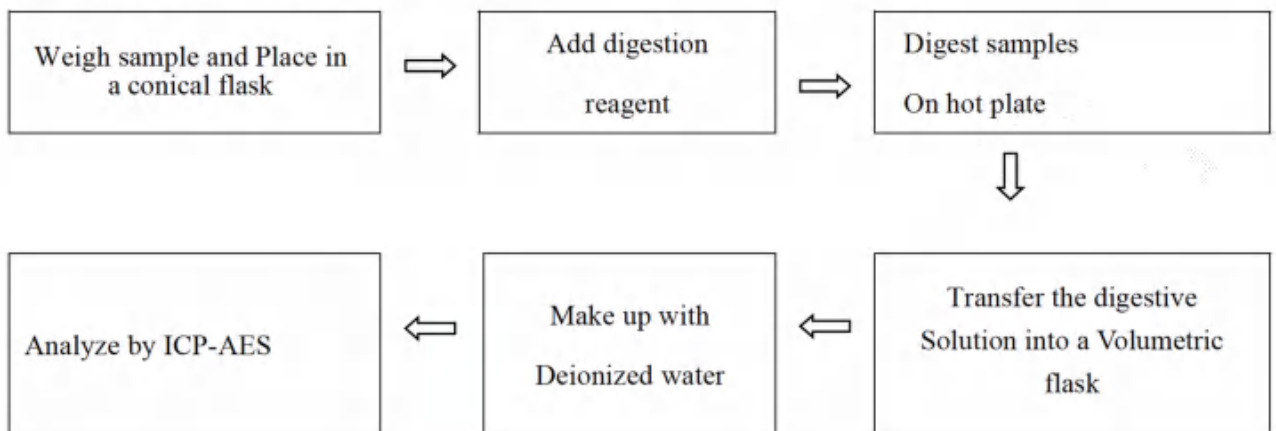
-Negative = Absence of Cr(VI), the detected Cr(VI) concentration in the boiling water extraction solution is less than 0.02 mg/kg with 50cm<sup>2</sup> sample surface

-\*=According to 2011/65/EU Annex, point 6-Lead as an alloying element is steel containing up to 0.35% lead by weight, aluminum containing up to 0.4% lead by weight and as a copper alloy, containing up to 4% lead by weight can be exempted.

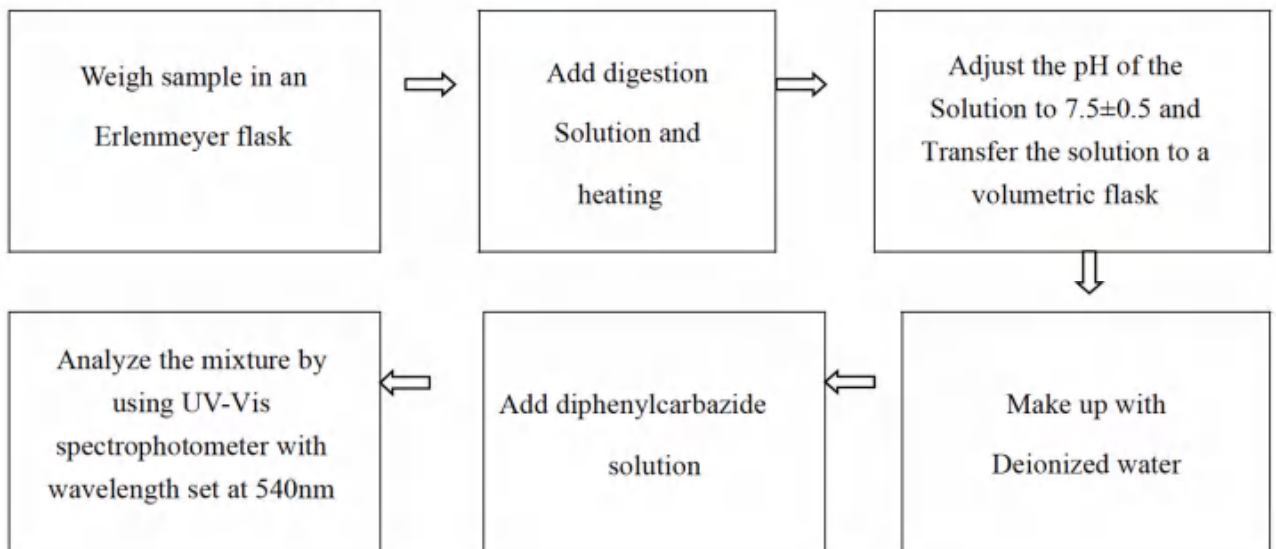
This Test Report is issued by the Company subject to its General Conditions of Service printed overleaf. Attention is drawn to the limitations of liability, indemnification and jurisdictional policies defined therein. The results shown in this test report refer only to the sample(s) tested unless otherwise stated and the sample(s) are retained for 30 days only. This Test Report cannot be reproduced, except in full, without prior written permission of the Company.

**Test Process:**

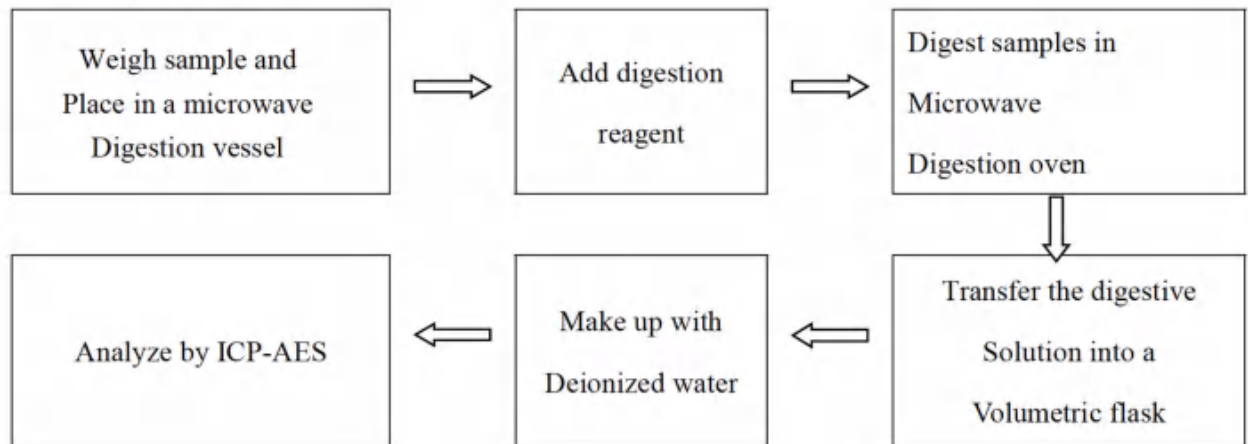
## 1. Test for Cd/Pb Content



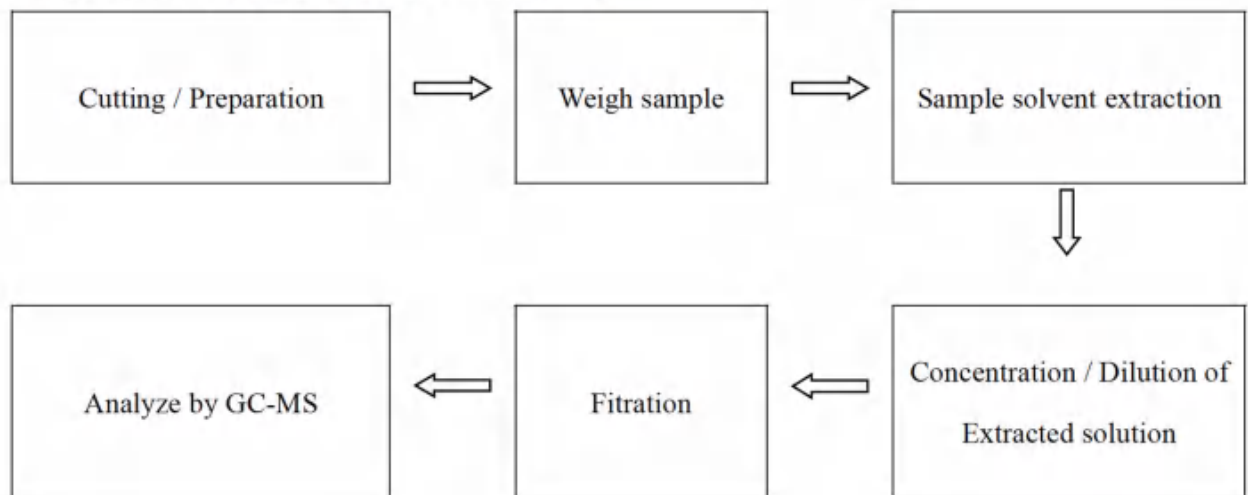
## 2. Test for Chromium(VI)Content



## 3. Test for Hg Contents



## 4. Test for PBBs/PBDES/DBP/BBP/DEHP/DIBP



**Photograph of Sample:**

**EUT View 1**



**EUT View 2**



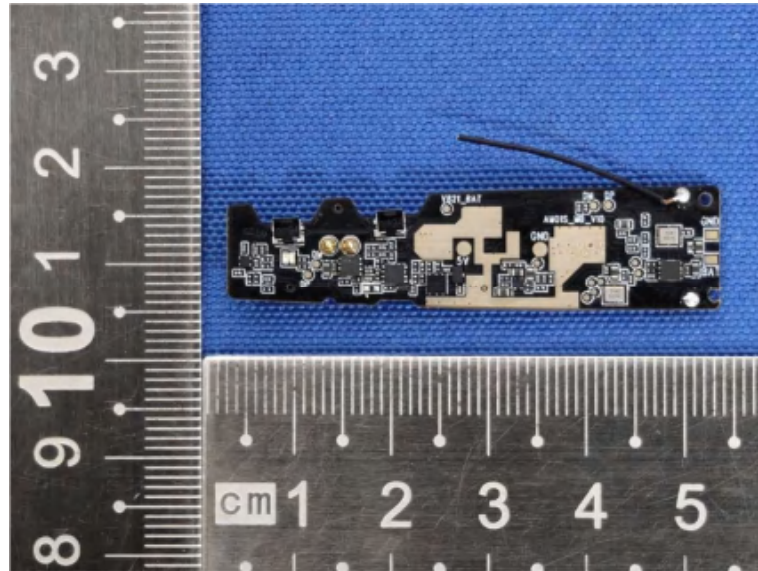
**EUT View 3**



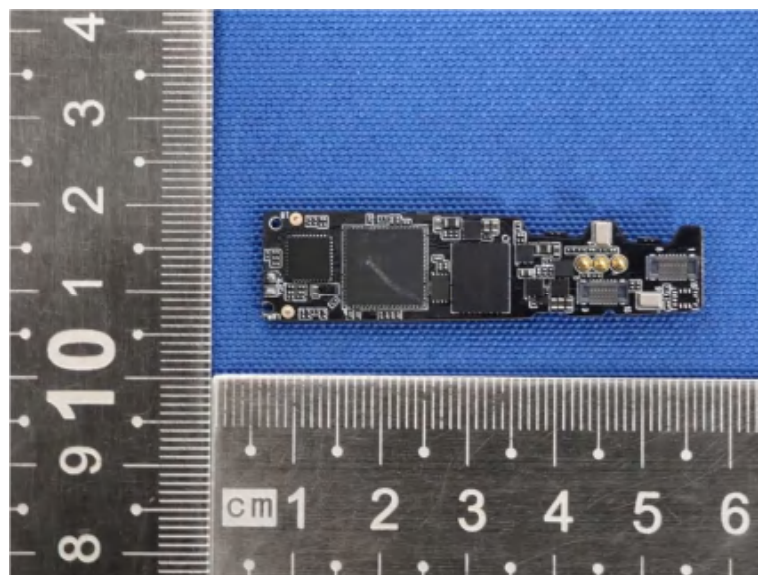
**EUT View 4**



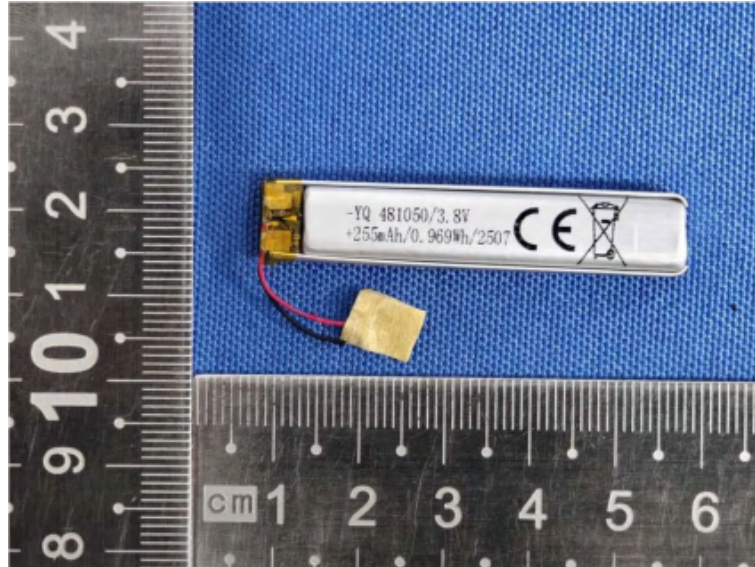
**EUT View 5**



**EUT View 6**



**EUT Battery View 7**



\*\*\*\*\*End of Report \*\*\*\*\*