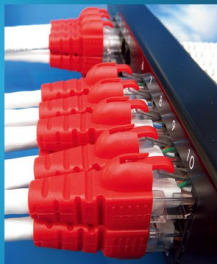


Our products meet ETL, Delta and UL requirements



Cat 6a patch cords, new
and patented design

- Meets FCC Part 68 and ANSI/TIA-568-C.2 standards
- Easy to plug in and pull out
- S/FTP, 26 AWG
- For high-density patch panels

- Over 28 years' experience
- Over 40 R&D engineers handle OEM/ODM requests
- All items are tested before shipment



Ningbo Excellence Communicated Connector Co. Ltd

651 Hengshanxi Rd., Beilun, Ningbo, Zhejiang 315800, China

Tel: (86-574) 8686 8738 • Fax: (86-574) 8686 8728

E-mail: sales@nbexw.com

www.globalsources.com/excellence.co • www.nbexw.com

Global Sources  Verified Supplier ★★★★★

ISO 9001:2008 ISO 14001:2004 OHSAS 18001:2007

